

INDEX OF SHEETS

06/17/2022 LETTING ITEM 218

- 01 COVER SHEET
- 02 GENERAL NOTES AND COMMITMENTS
- 03 SUMMARY OF QUANTITIES
- 04 TYPICAL SECTIONS
- 05 SCHEDULES OF QUANTITIES
- 06-09 REMOVAL PLAN
- 10-13 ROADWAY PLAN
- 14-15 MISCELLANEOUS DETAILS

LIST OF STANDARDS

- 000001-08 STANDARD SYMBOLS, ABBREVIATIONS AND PATTERNS
- 001006 DECIMAL OF AN INCH AND OF A FOOT
- 424001-11 PERPENDICULAR CURB RAMPS FOR SIDEWALKS
- 424011-04 CORNER PARALLEL CURB RAMPS FOR SIDEWALKS
- 424021-06 DEPRESSED CORNER FOR SIDEWALKS
- 442201-03 CLASS C AND D PATCHES
- 604001-05 FRAME AND LID TYPE 1
- 604006-05 FRAME & GRATE TYPE 3
- 606001-08 CONCRETE CURB TYPE B & COMBINATION CONCRETE CURB & GUTTER
- 701301-04 LANE CLOSURE 2L, 2W, SHORT TIME OPERATIONS
- 701311-03 LANE CLOSURE 2L, 2W, MOVING OPERATIONS-DAY ONLY
- 701501-06 URBAN LANE CLOSURE 2L, 2W, UNDIVIDED
- 701701-10 URBAN LANE CLOSURE, MULTILANE INTERSECTION
- 701801-06 SIDEWALK, CORNER OR CROSSWALK CLOSURE
- 701901-08 TRAFFIC CONTROL DEVICES
- 780001-05 TYPICAL PAVEMENT MARKINGS

STATE OF ILLINOIS
DEPARTMENT OF TRANSPORTATION
PLANS FOR PROPOSED
FAU ROUTE 9215
CITY OF EAST SAINT LOUIS
PHASE II COLLINSVILLE AVE. IMPROVEMENTS
SEC 18-00213-02-RS
PROJECT NO. SSBN(735)
JOB NO. C-98-015-22
ST. CLAIR COUNTY
STP-S FUNDS

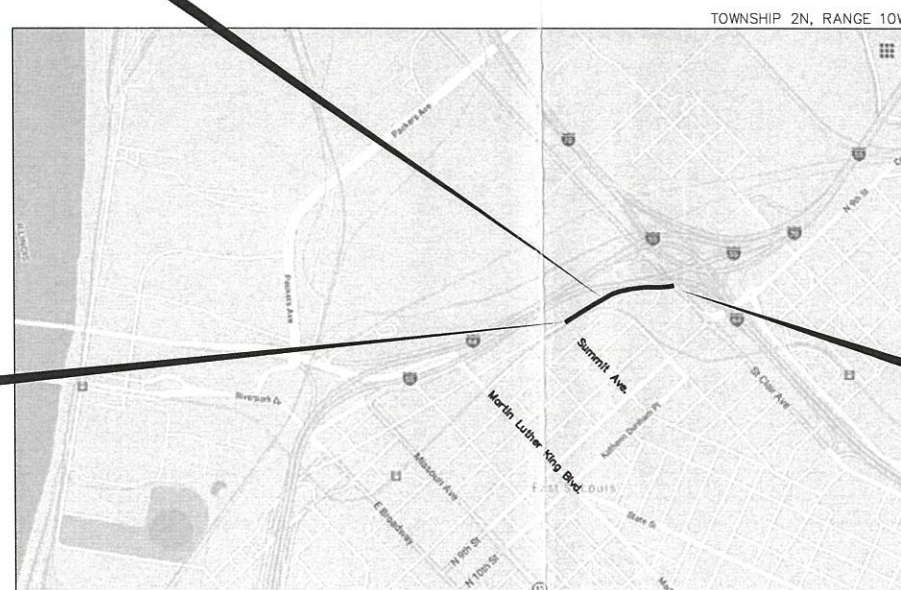
F.A.U. RTE.	SECTION	COUNTY	TOTAL SHEETS	SHEET NO.
9215	18-00213-02-RS	ST. CLAIR	15	01
FEDERAL-AID PROJECT			CONTRACT NO. 97783	



PROJECT LOCATION

ST. CLAIR COUNTY
LOCATION OF SECTION INDICATED THUS - ■

PROJECT LOCATION



BEGIN CONSTRUCTION
STA. 15+79.18
(SUMMIT AVE.)

END CONSTRUCTION
STA. 32+11.71
(ST CLAIR AVE.)

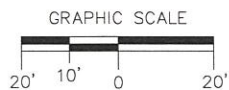
LOCATION MAP

NO SCALE

DESIGNATION: MINOR ARTERIAL
ADT = 1550
GROSS PROJECT LENGTH = 1632.53 FEET (0.309 MILES)
NET PROJECT LENGTH = 1632.53 FEET (0.309 MILES)
DESIGN SPEED = 25 MPH

SCALES:

ROADWAY PLANS 1 INCH = 20 FEET



GRAPHICAL SCALES TO BE USED ARE SHOWN
ACCORDINGLY ON EACH PLAN SHEET

UTILITY OWNERS

WATER: ILLINOIS AMERICAN WATER COMPANY
100 NORTH WATERWORK DRIVE
BELLEVILLE, ILLINOIS 62223
618/277-7450

GAS: ILLINOIS POWER COMPANY
330 NORTH 29TH ST.
EAST ST. LOUIS, ILLINOIS 62202
800/755-5000

ELECTRIC: AMEREN-UE COMPANY
500 EAST BROADWAY
EAST ST. LOUIS, ILLINOIS 62203
618/482-2214

TELEPHONE: ILLINOIS BELL TELEPHONE COMPANY
203 GOETHE
COLLINSVILLE, ILLINOIS 62234
618/346-6400

CABLE T.V.: CHARTER COMMUNICATIONS
317 WEST MAIN STREET
BELLEVILLE, IL 62220
618/277-2288

J.U.L.I.E. (800) 892-0123
E. ST. LOUIS TOWNSHIP
CITY OF E. ST. LOUIS, IL.



Samantha Soto
SAMANTHA M. SOTO
ILLINOIS P.E. NO. 062-066034
EXPIRES: 11-30-23

4/5/22
DATE



HURST-ROSCH, INC
5 Bank Square
E. St. Louis, IL
618.398.0890 t

STATE OF ILLINOIS
DEPARTMENT OF TRANSPORTATION

March 10, 2022

APPROVED: *Robert Eastern III*
ROBERT EASTERN, III, MAYOR, CITY OF EAST ST. LOUIS

PASSED: *4-11* 2022
[Signature]
DISTRICT 8 ENGINEER OF LOCAL ROADS & STREETS

RELEASING FOR
BID BASED ON
LIMITED REVIEW: *4-11* 2022
[Signature]
REGION 5 ENGINEER

PRINTED BY AUTHORITY OF THE STATE OF ILLINOIS



Hurst-Rosche, Inc.
PROFESSIONAL DESIGN NUMBER: 18-00298

5 Bank Square
E. St. Louis, IL
618.398.0890 t
www.hurst-rosche.com

HILLSBORO, IL
MARION, IL
SPRINGFIELD, IL
ARNOLD, MO
NEOSHO, MO
NASHVILLE, TN

PREPARED FOR:

CONTRACT 97783
SEC NO 18-00213-02-RS

PHASE II COLLINSVILLE AVE. IMPROVEMENTS
CITY OF EAST ST. LOUIS
ST. CLAIR COUNTY, ILLINOIS

MARK	DATE	DESCRIPTION
	04/2022	

PROJECT NO: 220-1501		
DESIGN: SMS	DRAWN: SMS	CHECK: TAS

GENERAL NOTES
AND
COMMITMENTS

GENERAL NOTES:

- THE LOCATIONS AND/OR DEPTHS OF UNDERGROUND UTILITIES SHOWN HAVE BEEN TAKEN FROM AVAILABLE RECORD INFORMATION AND MUST BE CONSIDERED APPROXIMATE. FIELD MARKING OF UTILITIES IN CRITICAL AREAS MAY BE OBTAINED BY PROVIDING A MINIMUM OF 48 HOURS ADVANCE NOTICE OF J.U.L.I.E. AT (800) 892-0123.
- THE FOLLOWING CONSTANTS WERE USED IN THE CALCULATIONS OF QUANTITIES FOR THIS PROJECT:
 - HMA SURFACE COURSE, MIX "C" N70 - 112 LBS. / SQ. YD. / INCH THICKNESS
 - BITUMINOUS MATERIALS (TACK COAT) - 0.05 LBS./SQ. FT.
 - AGGREGATE SURFACE & BASE - 2.05 TONS./CU. YD.
- THE EXISTING RIGHT OF WAY LINES / PROPERTY LINES AND WIDTHS SHOWN ON THE PLAN SHEETS WERE TAKEN FROM EXISTING INFORMATION. THE LOCATIONS SHOWN ARE FOR INFORMATIONAL PURPOSES ONLY AND SHOULD BE CONSIDERED APPROXIMATE.
- EXISTING SEWERS AND STRUCTURES ARE APPROXIMATE ONLY. THE CONTRACTOR SHALL FIELD VERIFY LOCATIONS PRIOR TO ANY CONSTRUCTION.
- ALL EXISTING STORM STRUCTURES AND SEWER LINES TO BE USED IN PLACE UNLESS OTHERWISE NOTED. ALL EXISTING STRUCTURES AND SEWERS ARE TO BE PROTECTED. ANY DAMAGE TO EXISTING STRUCTURES OR SEWERS WILL BE REPAIRED OR REPLACED AT THE CONTRACTORS EXPENSE.
- WATER METERS WHICH MAY NEED TO BE ADJUSTED SHOULD BE COORDINATED WITH UTILTY. THE CONTRACTOR IS RESPONSIBLE TO COORDINATE THIS WORK. THE CONTRACTOR WILL NOT BE COMPENSATED FOR ANY DAMAGE TO OR COST INCURRED FOR THIS WORK.
- "ROAD CONSTRUCTION AHEAD" SIGNS SHALL BE PLACED AT EACH END OF THE PROJECT AND AT ALL INTERSECTING SIDE ROADS. ADVANCE WARNING SIGNS SHALL BE 48" FLUORESCENT ORANGE. COST TO BE INCLUDED IN THE TRAFFIC CONTROL PAY ITEM.
- CLEARING OF EXISTING BRUSH TO BE PROVIDED PER SECTION 201 OF THE STANDARD SPECIFICATIONS ON THE RIGHT SIDE OF THE ROADWAY FROM THE INTERSECTION OF THE PENNSYLVANIA AVE TO THE INTERSECTION OF 7TH STREET. THIS WORK SHALL BE PAID PER ARTICLE 109.04.

COMMITMENTS:

CONSTRUCTION MONITORING

THE CONTRACTOR SHALL CONTACT ILLINOIS STATE ARCHAEOLOGICAL SURVEY (ISAS) PERSONNEL WITHIN 48 HOURS PRIOR TO ANY EXCAVATION OPERATIONS WITHIN THE PROJECT LIMITS. ISAS PERSONNEL MUST ATTEND THE PRECONSTRUCTION MEETING TO DISCUSS MONITORING PROCEDURES AND SAFETY PROTOCOLS WITH IDOT STAFF AND THE CONTRACTOR. ISAS PERSONNEL WILL MONITOR PROJECT EXCAVATIONS AND WILL HAVE THE AUTHORITY TO HALT EXCAVATIONS FOR NO LONGER THAN TWO WORKING DAYS (OR 48 HOURS) TO DOCUMENT AND REMOVE ARCHAEOLOGICAL MATERIALS. HOWEVER, IF HUMAN REMAINS ARE DISCOVERED, CONSTRUCTION WILL BE HALTED UNTIL APPROVAL TO RESUME CONSTRUCTION IS PROVIDED BY IDOT IN COORDINATION WITH THE ILLINOIS STATE BURIAL LAW COORDINATOR, PER THE ILLINOIS HUMAN SKELETAL REMAIN PROTECTION ACT (20 ILCS 3440).

CONTROL POINTS

POINT NO.	NORTHING	EASTING	ELEVATION	DESCRIPTION
1	715321.53	504558.86	418.92	IRON PIN SET
2	715728.00	506071.60	413.78	IRON PIN SET
3	715552.39	505165.19	415.43	IRON PIN SET

SUMMARY OF QUANTITIES

CODE NO.	ITEM	UNIT	TOTAL
20200100	EARTH EXCAVATION	CU YD	200
20400800	FURNISHED EXCAVATION	CU YD	200
25000210	SEEDING, CLASS 2A	ACRE	0.25
25000400	NITROGEN FERTILIZER NUTRIENT	POUND	23
25000500	PHOSPHORUS FERTILIZER NUTRIENT	POUND	23
25000600	POTASSIUM FERTILIZER NUTRIENT	POUND	23
25100115	MULCH METHOD 2	ACRE	0.25
35100500	AGGREGATE BASE COURSE, TYPE A 6"	SQ YD	131
40200300	AGGREGATE SURFACE COURSE, TYPE A 4"	SQ YD	294
40200700	AGGREGATE SURFACE COURSE, TYPE A 8"	SQ YD	46
40600290	BITUMINOUS MATERIALS (TACK COAT)	POUND	7712
40600985	PORTLAND CEMENT CONCRETE SURFACE REMOVAL - BUTT JOINT	SQ YD	77
40600990	TEMPORARY RAMP	SQ YD	243
40602970	HOT-MIX ASPHALT BINDER COURSE, IL-9.5FG, N70	TON	600
40604052	HOT-MIX ASPHALT SURFACE COURSE, IL-9.5, MIX "C", N70	TON	720
42001300	PROTECTIVE COAT	SQ YD	276
42300400	PORTLAND CEMENT CONCRETE DRIVEWAY PAVEMENT, 8 INCH	SQ YD	131
42400100	PORTLAND CEMENT CONCRETE SIDEWALK 4 INCH	SQ FT	11041
42400300	PORTLAND CEMENT CONCRETE SIDEWALK 6 INCH	SQ FT	927
42400800	DETECTABLE WARNINGS	SQ FT	129
44000100	PAVEMENT REMOVAL	SQ YD	236
44000200	DRIVEWAY PAVEMENT REMOVAL	SQ YD	229
44000300	CURB REMOVAL	FOOT	1027
44000500	COMBINATION CURB AND GUTTER REMOVAL	FOOT	240
44000600	SIDEWALK REMOVAL	SQ FT	6423
44003100	MEDIAN REMOVAL	SQ FT	1205
44201361	CLASS C PATCHES, TYPE I, 11 INCH	SQ YD	34.9
44201365	CLASS C PATCHES, TYPE II, 11 INCH	SQ YD	331.9

CODE NO.	ITEM	UNIT	TOTAL
44201369	CLASS C PATCHES, TYPE III, 11 INCH	SQ YD	162.6
44201371	CLASS C PATCHES, TYPE IV, 11 INCH	SQ YD	509.1
56109210	WATER VALVES TO BE ADJUSTED	EACH	12
60255500	MANHOLES TO BE ADJUSTED	EACH	8
60260100	INLETS TO BE ADJUSTED	EACH	1
60600605	CONCRETE CURB, TYPE B	FOOT	1048
60603800	COMBINATION CONCRETE CURB AND GUTTER, TYPE B-6.12	FOOT	244
67100100	MOBILIZATION	L SUM	1
78000200	* THERMOPLASTIC PAVEMENT MARKING - LINE 4"	FOOT	3020
78000600	* THERMOPLASTIC PAVEMENT MARKING -LINE 12"	FOOT	228
X1200108	INLET BOX, SPECIAL	EACH	3
X4400100	PORTLAND CEMENT CONCRETE SURFACE REMOVAL (VARIABLE DEPTH)	SQ YD	8494
X7010216	TRAFFIC CONTROL AND PROTECTION, (SPECIAL)	L SUM	1
Z0010600	CLEANING DRAINAGE SYSTEM	L SUM	1

* SPECIALTY ITEMS



Hurst-Rosche, Inc.
PROFESSIONAL DESIGN NUMBER: 18-00213

5 Bank Square
E. St. Louis, IL
618.398.0890 t
www.hurst-rosche.com

HILLSBORO, IL
MARION, IL
SPRINGFIELD, IL
ARNOLD, MO
NEOSHO, MO
NASHVILLE, TN

PREPARED FOR:

CONTRACT NO 97783
SEC NO 18-00213-02-RS

PHASE II COLLINSVILLE AVE. IMPROVEMENTS
CITY OF EAST ST. LOUIS
ST. CLAIR COUNTY, ILLINOIS

MARK	DATE	DESCRIPTION
	04/2022	

PROJECT NO: 220-1501
DESIGN: SMS DRAWN: SMS CHECK: TAS

SUMMARY OF QUANTITIES



Hurst-Rosche, Inc.

PROFESSIONAL DESIGN NUMBER: 184-002050
 5 Bank Square
 E. St. Louis, IL
 618.398.0890 t
 www.hurst-rosche.com

HILLSBORO, IL
 MARION, IL
 ARNOLD, MO
 NEOSHO, MO
 NASHVILLE, TN

PREPARED FOR:

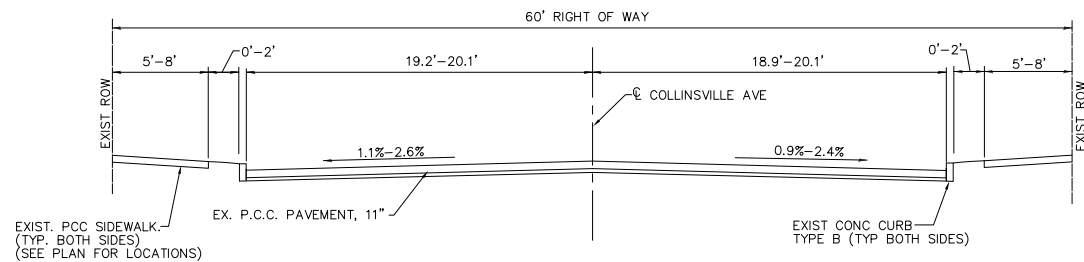
CONTRACT 97783
 SECTION 18-00213-02-RS

PHASE II COLLINSVILLE AVE. IMPROVEMENTS
 CITY OF EAST ST. LOUIS
 ST. CLAIR COUNTY, ILLINOIS

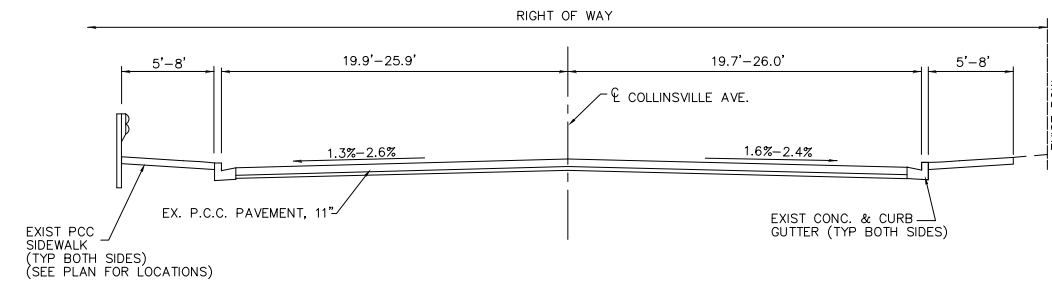
MARK	DATE	DESCRIPTION
	04/2022	

PROJECT NO:	220-1501
DESIGN:	SMS
DRAWN:	LAO
CHECK:	TAS

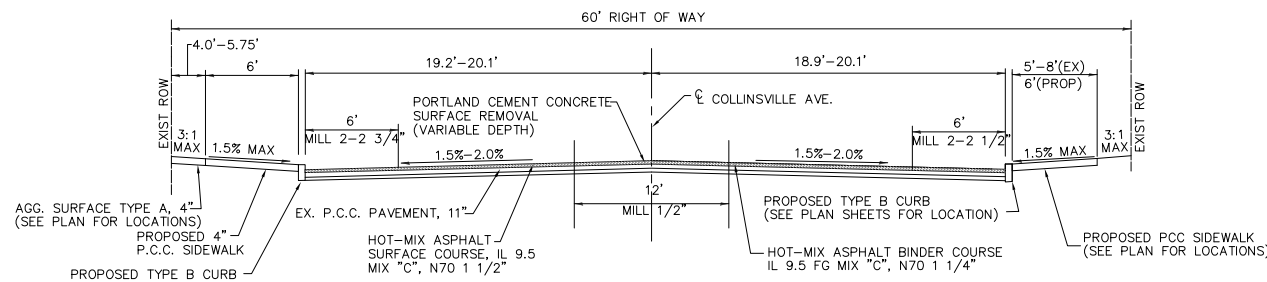
TYPICAL SECTIONS



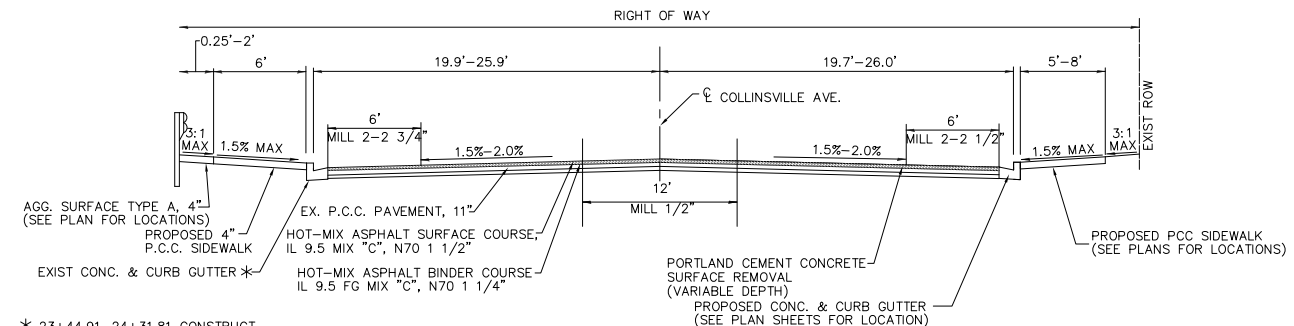
EXISTING TYPICAL ROADWAY SECTION
 COLLINSVILLE AVENUE
 STA. 15+79.18 TO STA. 23+44.91



EXISTING TYPICAL ROADWAY SECTION
 COLLINSVILLE AVENUE
 STA. 23+44.91 TO STA. 27+76.93

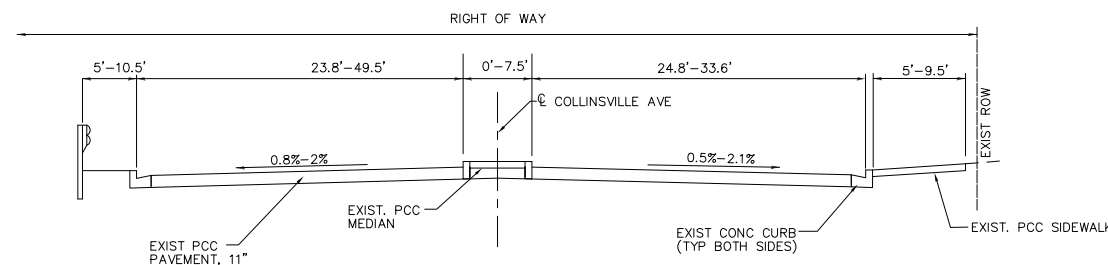


PROPOSED TYPICAL ROADWAY SECTION*
 COLLINSVILLE AVENUE
 STA. 15+79.18 TO STA. 23+44.91
 *SEE THIS SHEET FOR MORE DETAIL ON CURB AND SIDEWALK CONSTRUCTION

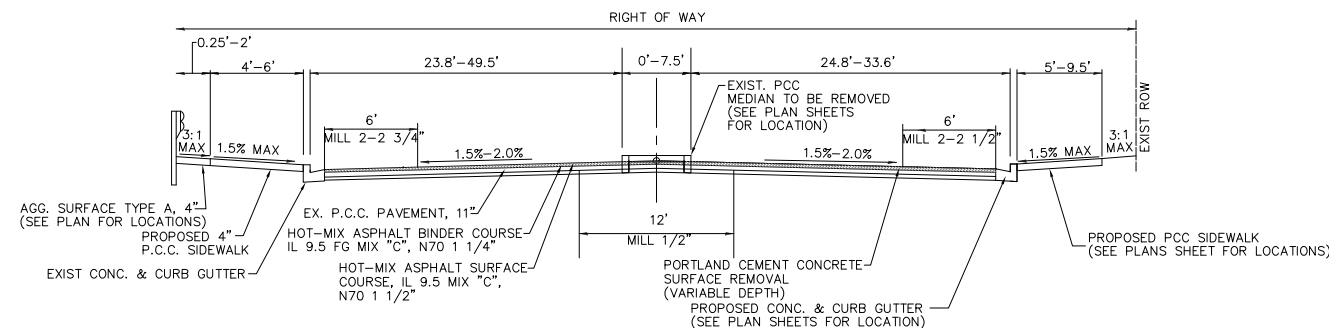


* 23+44.91-24+31.81 CONSTRUCT NEW SIDEWALK AND CURB AND GUTTER (B6.12)
 24+34.81-27+76.93 EXISTING CURB AND GUTTER TO REMAIN

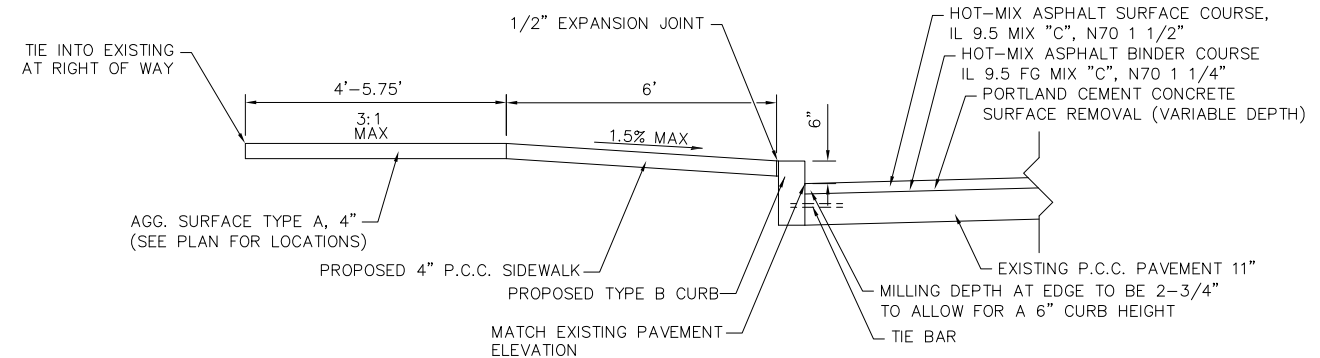
PROPOSED TYPICAL ROADWAY SECTION
 COLLINSVILLE AVENUE
 STA. 23+44.91 TO STA. 27+76.93



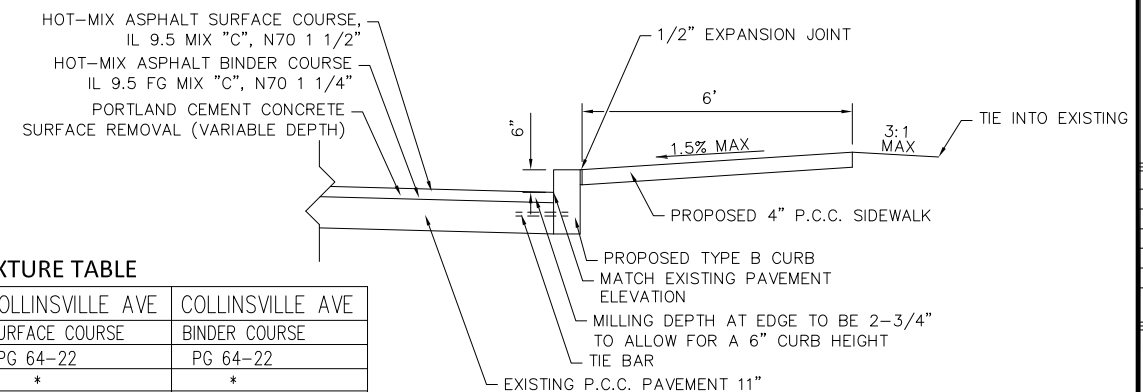
EXISTING TYPICAL ROADWAY SECTION
 COLLINSVILLE AVENUE
 STA. 27+76.93 TO STA. 32+11.71



PROPOSED TYPICAL ROADWAY SECTION
 COLLINSVILLE AVENUE
 STA. 27+76.93 TO STA. 32+11.71



LEFT SIDE NEW CURB DETAIL



RIGHT SIDE NEW CURB DETAIL

MIXTURE TABLE

LOCATION	COLLINSVILLE AVE	COLLINSVILLE AVE
MIXTURE USE	SURFACE COURSE	BINDER COURSE
PG	PG 64-22	PG 64-22
RAP % (MAX)	*	*
DESIGN AIR VOIDS	4.0% @ Ndes=70	4.0% @ Ndes=70
MIX COMPOSITION (GRADATION MIXTURE)	IL-9.5	IL-9.5 FG
FRICTION AGGREGATE	MIXTURE "C"	
MIXTURE WEIGHT	112 LBS./SQ. YD./IN.	112 LBS./SQ. YD./IN.

* SEE SPECIAL PROVISIONS



Hurst-Rosche, Inc.

PROFESSIONAL DESIGN NUMBER: 18-0029

5 Bank Square
E. St. Louis, IL
618.398.0890 t
www.hurst-rosche.com

HILLSBORO, IL
MARION, IL
SPRINGFIELD, IL
ARNOLD, MO
NEOSHO, MO
NASHVILLE, TN

PREPARED FOR:

CONTRACT NO 97783
SEC NO 18-00213-02-RS

PHASE II COLLINSVILLE AVE. IMPROVEMENTS
CITY OF EAST ST. LOUIS
ST. CLAIR COUNTY, ILLINOIS

MARK	DATE	DESCRIPTION
	04/2022	

PROJECT NO: 220-1501
DESIGN: SMS DRAWN: SMS CHECK: TAS

SCHEDULES OF QUANTITIES

MANHOLES TO BE ADJUSTED			
COLLINSVILLE AVENUE			
STA	OFFSET	EACH	
15+87.39	16.32	LT	1
15+98.34	0.59	RT	1
18+53.75	0.24	RT	1
20+98.27	0.07	RT	1
22+24.74	27.79	LT	1
23+54.20	0.14	RT	1
23+60.67	14.79	LT	1
29+33.88	1.41	LT	1
TOTAL			8

WATER VALVES TO BE ADJUSTED			
COLLINSVILLE AVE			
STA	OFFSET	EACH	
15+86.30	10.95	RT	1
15+86.58	13.55	RT	1
15+93.03	14.30	RT	1
15+94.60	20.81	RT	1
16+08.74	2.32	LT	1
16+13.14	16.02	RT	1
16+20.50	15.26	RT	1
16+24.42	10.59	RT	1
23+49.45	19.16	RT	1
23+50.75	33.19	RT	1
23+52.71	11.47	RT	1
23+72.54	10.43	RT	1
TOTAL			12

CLASS C PATCHES, TYPE II, 11 INCH			
COLLINSVILLE AVE			
Station	OFFSET	SQ YD	
16+23	RT	5.4	
16+95	LT	6.2	
17+21	LT	7.4	
17+34	RT	10.0	
17+49	LT	9.8	
18+33	RT	13.5	
18+35	CL	6.7	
18+44	RT	5.4	
18+51	CL	7.0	
19+24	LT	6.3	
19+50	CL	9.4	
20+30	RT	13.4	
20+36	RT	5.8	
20+36	LT	5.8	
20+51	CL	11.0	
20+68	RT	5.4	
20+68	CL	11.4	
20+95	CL	5.4	
21+34	RT	9.0	
21+34	LT	9.0	
22+19	CL	11.7	
22+35	RT	6.7	
22+53	RT	10.7	
22+57	RT	5.6	
22+57	LT	5.6	
24+81	RT	14.0	
24+81	LT	14.0	
25+81	RT	9.2	
25+81	LT	9.2	
26+82	RT	7.5	
26+82	LT	7.5	
27+28	RT	7.2	
27+49	LT	7.8	
28+16	RT	12.8	
28+17	LT	11.2	
29+02	LT	11.8	
29+06	LT	5.4	
29+19	RT	10.7	
Total			331.9

CLASS C PATCHES, TYPE I, 11 INCH			
COLLINSVILLE AVE			
Station	OFFSET	SQ YD	
16+41	LT	3.2	
16+61	CL	3.2	
16+75	RT	3.2	
17+07	RT	3.7	
19+03	RT	4.0	
20+39	CL	1.4	
22+35	LT	4.5	
25+50	RT	2.8	
26+45	RT	3.9	
27+07	RT	2.7	
28+04	LT	2.3	
Total			34.9

CLASS C PATCHES, TYPE III, 11 INCH			
COLLINSVILLE AVE			
Station	OFFSET	SQ YD	
16+02	LT	16.0	
16+09	RT	20.3	
21+69	CL	22.3	
25+94	RT	15.4	
30+20	RT	16.7	
31+13	RT	17.3	
31+31	LT	17.3	
31+34	RT	17.3	
31+71	LT	20.0	
Total			162.6

CLASS C PATCHES, TYPE IV, 11 INCH			
COLLINSVILLE AVE			
Station	OFFSET	SQ YD	
19+27	CL	25.4	
19+27	CL	25.4	
19+69	CL	29.4	
22+99	CL	28.5	
23+32	CL	102.3	
23+32	CL	102.3	
27+78	CL	45.8	
28+80	CL	79.6	
30+17	CL	37.4	
31+62	CL	33.0	
Total			509.1

COMBINATION CONCRETE CURB AND GUTTER, TY B-6.12				
COLLINSVILLE AVE				
		RT/LT	FOOT	
23+44.91	TO	24+34.81	LT	92
23+80.51	TO	24+03.49	RT	35
26+29.77	TO	26+40.57	RT	11
26+81.57	TO	26+86.76	RT	5
27+32.10	TO	27+37.30	RT	5
28+67.71	TO	28+80.84	RT	24
28+95.29	TO	29+13.35	RT	25
30+31.39	TO	30+36.18	RT	19
30+51.35	TO	30+51.69	RT	7
30+62.26	TO	30+65.43	RT	8
30+74.56	TO	30+81.49	RT	13
TOTAL				244

THERMOPLASTIC PAVEMENT MARKING -LINE 12"			
COLLINSVILLE AVE			
		RT/LT	FOOT
15+69.54		LT	76
23+38.81		RT	76
30+36.43		RT	36
30+62.26		RT	40
TOTAL			228

PORTLAND CEMENT CONCRETE SIDEWALK 4 INCH				
COLLINSVILLE AVE				
		OFFSET	SQ FT	
16+15.90	TO	18+19.99	LT	1310
18+43.99	TO	19+75.81	LT	749
19+99.81	TO	20+58.95	LT	313
20+82.95	TO	21+04.95	LT	90
21+28.95	TO	22+60.33	LT	747
20+93.54	TO	23+22.43	RT	1374
22+84.33	TO	32+02.21	LT	5445
26+29.83	TO	26+40.29	RT	53
27+13.20	TO	27+23.32	RT	50
30+84.85	TO	31+75.97	RT	910
Total				11041

PORTLAND CEMENT CONCRETE SIDEWALK 6 INCH				
COLLINSVILLE AVE				
		OFFSET	SQ FT	
16+13.60	TO	16+16.39	LT	82
23+22.43	TO	23+35.53	RT	214
23+79.70	TO	24+03.24	RT	202
28+67.71	TO	28+80.97	RT	76
28+99.12	TO	29+14.08	RT	76
30+26.12	TO	30+30.10	RT	107
30+52.58	TO	30+60.39	RT	83
30+77.93	TO	30+85.13	RT	87
Total				927

DETECTABLE WARNINGS			
COLLINSVILLE AVE			
		OFFSET	SQ FT
16+09.32		LT	12
23+36.65		RT	14
23+82.39		RT	12
28+78.12		RT	18
28+99.12		RT	20
30+33.74		RT	12
30+52.61		RT	12
30+58.86		RT	15
30+74.56		RT	14
TOTAL			129

COMBINATION CURB AND GUTTER REMOVAL				
COLLINSVILLE AVE				
			RT/LT	FOOT
23+44.91	TO	24+34.81	LT	92
23+79.65	TO	24+03.49	RT	34
26+29.77	TO	26+40.57	RT	11
26+81.57	TO	26+86.76	RT	5
27+32.10	TO	27+37.30	RT	5
28+67.71	TO	28+81.14	RT	23
28+95.29	TO	29+13.35	RT	24
30+31.27	TO	30+36.06	RT	19
30+52.49	TO	30+63.81	RT	14
30+74.44	TO	30+81.37	RT	13
TOTAL				240

SIDEWALK REMOVAL				
COLLINSVILLE AVE				
		RT/LT	SQ FT	
18+71.43	to	19+75.60	Lt	414
19+90.04	to	20+65.95	Lt	702
20+75.95	to	21+12.41	Lt	348
20+93.54	to	23+44.34	Rt	2142
21+21.95	to	22+74.07	Lt	1428
22+85.19	to	23+93.82	Lt	886
23+81.12	to	24+03.49	Rt	173
26+29.77	to	26+40.57	Rt	51
27+12.80	to	27+23.27	Rt	39
28+67.71	to	28+80.52	Rt	54
29+03.07	to	29+13.96	Rt	35
30+30.21	to	30+34.90	Rt	82
30+75.59	to	30+84.51	Rt	69
Total				6423

CLEANING DRAINAGE SYSTEM				
COLLINSVILLE AVE				
		RT/LT	L SUM	
23+23+96	TO	23+84.86	RT/LT	1
TOTAL			1	

ENTRANCE SCHEDULE									
STATION	OFFSET	ENTRANCE TYPE	EXISTING SURFACE TYPE	ENTRANCE WIDTH (FOOT)	ENTRANCE DEPTH "D" (FOOT)	DRIVEWAY PAVT REM (SQ YD)	AGG BASE CSE A 6 (SQ YD)	AGG SURF CSE A 8 (SQ YD)	PCC DRIVEWAY PAVT 8 (SQ YD)
COLLINSVILLE AVE									
16+50	LT					23			
17+38	LT					19			
18+32	LT	COMMERCIAL	CONC	24	5.8	93	36		36
19+88	LT	COMMERCIAL	AGG	24	5.8	16	21	16	21
20+71	LT	COMMERCIAL	AGG	24	5.5	11	21	15	21
21+17	LT	COMMERCIAL	AGG	24	5.5	11	21	15	21
22+72	LT	COMMERCIAL	CONC	24	4.0	14	32		32
24+13	LT					42			
TOTAL						229	131	46	131

CONCRETE CURB, TYPE B				
COLLINSVILLE AVE				
		RT/LT	FOOT	
16+01.90	TO	23+44.91	LT	789
20+93.54	TO	23+44.34	RT	259
TOTAL			1048	

THERMOPLASTIC PAVEMENT MARKING - LINE 4"				
COLLINSVILLE AVE				
			FOOT	
15+79.18	TO	30+86.38	CL	3020
TOTAL			3020	

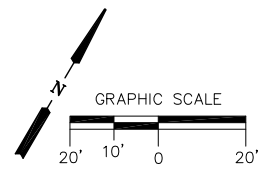
EARTH EXCAVATION						
Location						
			Earth Excavation	Excavation to be used in Embankment*	Embankment	Earthwork Balance**
From	To		Cubic Yard	Cubic Yard	Cubic Yard	Cubic Yard
15+79.18	32+11.71	LT	142	36	229	-194
15+79.18	32+11.71	RT	46	12	0	12
Total			188	47	229	-182
USE			200		USE	-200

SEEDING SCHEDULE						
COLLINSVILLE AVE						
		SEEDING, CLASS 2A	NITROGEN FERTILIZER NUTRIENT	PHOSPHORUS FERTILIZER NUTRIENT	POTASSIUM FERTILIZER NUTRIENT	MULCH METHOD 2
		ACRE	POUND	POUND	POUND	ACRE
15+79.18	to	32+11.71	0.25	23	23	0.25

PAVEMENT SCHEDULE						
COLLINSVILLE AVE						
		BITUMINOUS MATERIALS (TACK COAT)	HOT-MIX ASPHALT BINDER COURSE, IL-9.5FG, N70	HOT-MIX ASPHALT SURFACE COURSE, IL-9.5, MIX "C", N70	PORTLAND CEMENT CONCRETE SURFACE REMOVAL (VARIABLE DEPTH)	
		POUND	TON	TON	SQ YD	
15+79.18	to	32+11.71	7712	600	720	8494

AGGREGATE SURFACE COURSE, TYPE A, 4"				
COLLINSVILLE AVE				
		OFFSET	SQ YD	
19+99.80	TO	20+59.65	LT	38
20+82.95	TO	21+04.95	LT	14
21+28.74	TO	22+60.33	LT	63
22+84.33	TO	24+34.81	LT	54
24+69.17	TO	32+03.17	LT	125
Total			294	

INLET BOX, SPECIAL				
COLLINSVILLE AVENUE				
STA	OFFSET	RT/LT	EACH	
23+23.96	22.88	LT	1	
23+33.65	23.83	RT		



Hurst-Rosche, Inc.
PROFESSIONAL DESIGN NUMBER: 184-002268

5 Bank Square
E. St. Louis, IL
618.398.0890 t
www.hurst-rosche.com

HILLSBORO, IL
MARION, IL
ARNOLD, MO
NEOSHO, MO
NASHVILLE, TN

PREPARED FOR:

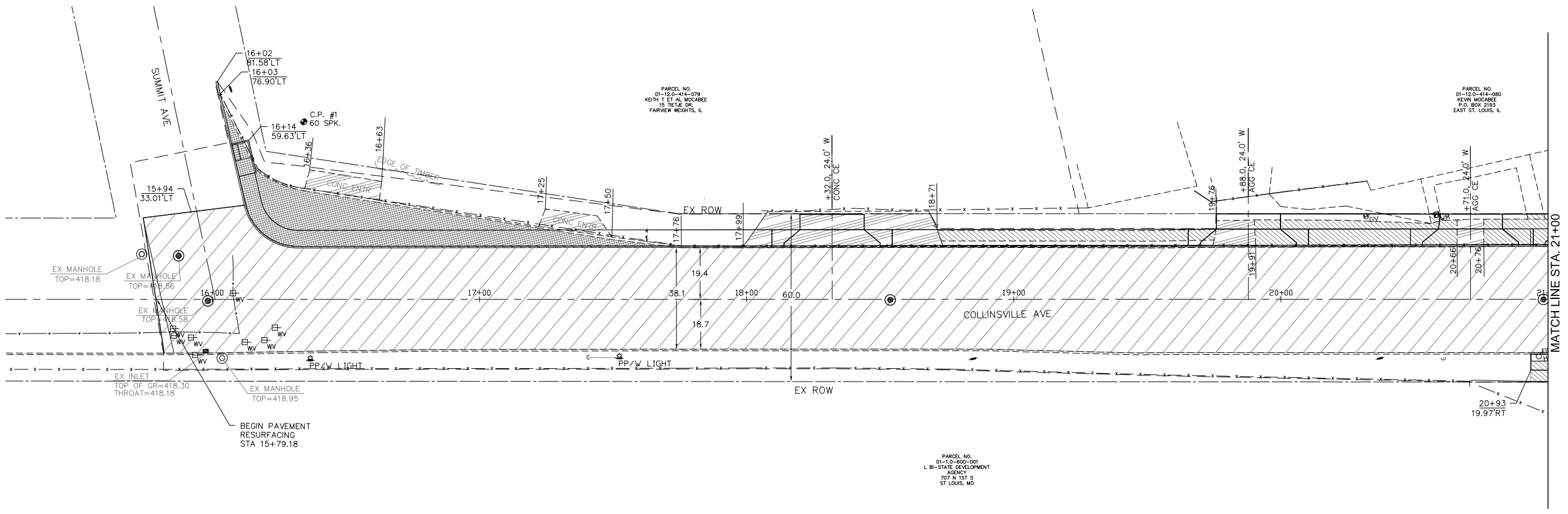
CONTRACT 97783
SECTION 18-00213-02-RS

PHASE II COLLINSVILLE AVE. IMPROVEMENTS
CITY OF EAST ST. LOUIS
ST. CLAIR COUNTY, ILLINOIS

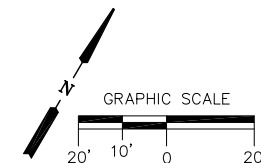
MARK	DATE	DESCRIPTION
	04/2022	

PROJECT NO: 220-1501
DESIGN: SMS DRAWN: LAO CHECK: TAS

REMOVAL PLAN



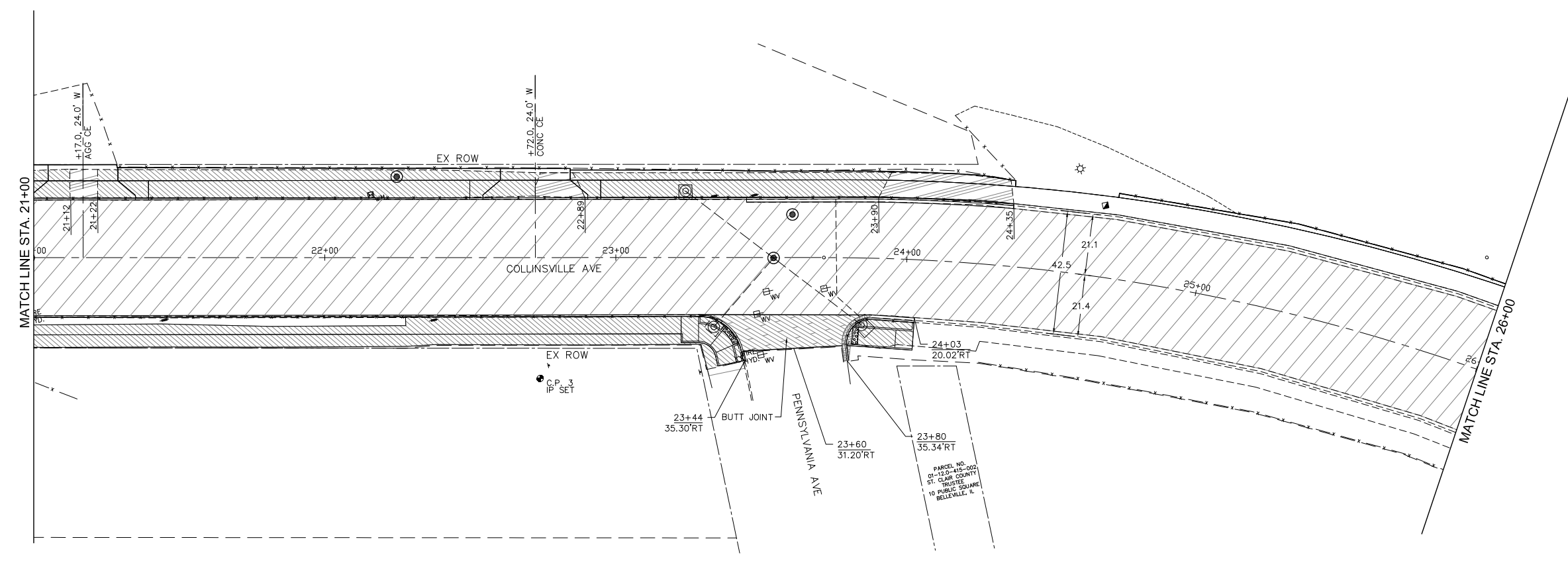
- LEGEND**
- PAVEMENT RESURFACING AREA
 - DRIVEWAY PAVEMENT REMOVAL
 - SIDEWALK REMOVAL
 - PAVEMENT REMOVAL
 - BUTT JOINTS
 - MEDIAN REMOVAL
 - LINEAR REMOVAL ITEM
 - EXISTING MANHOLE
 - MANHOLE TO BE ADJUSTED



Hurst-Rosche, Inc.
 PROFESSIONAL DESIGN NUMBER: 184-002268
 5 Bank Square
 E. St. Louis, IL
 618.398.0890 t
 www.hurst-rosche.com
 HILLSBORO, IL
 MARION, IL
 ARNOLD, MO
 NEOSHO, MO
 NASHVILLE, TN

PREPARED FOR:

CONTRACT 97783
 SECTION 18-00213-02-RS



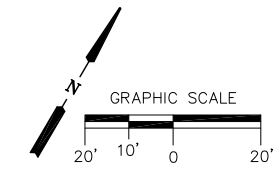
- LEGEND**
- PAVEMENT RESURFACING AREA
 - DRIVEWAY PAVEMENT REMOVAL
 - SIDEWALK REMOVAL
 - PAVEMENT REMOVAL
 - BUTT JOINTS
 - MEDIAN REMOVAL
 - LINEAR REMOVAL ITEM
 - EXISTING MANHOLE
 - MANHOLE TO BE ADJUSTED

PHASE II COLLINSVILLE AVE. IMPROVEMENTS
 CITY OF EAST ST. LOUIS
 ST. CLAIR COUNTY, ILLINOIS

MARK	DATE	DESCRIPTION
	04/2022	

PROJECT NO: 220-1501
 DESIGN: SMS DRAWN: LAO CHECK: TAS

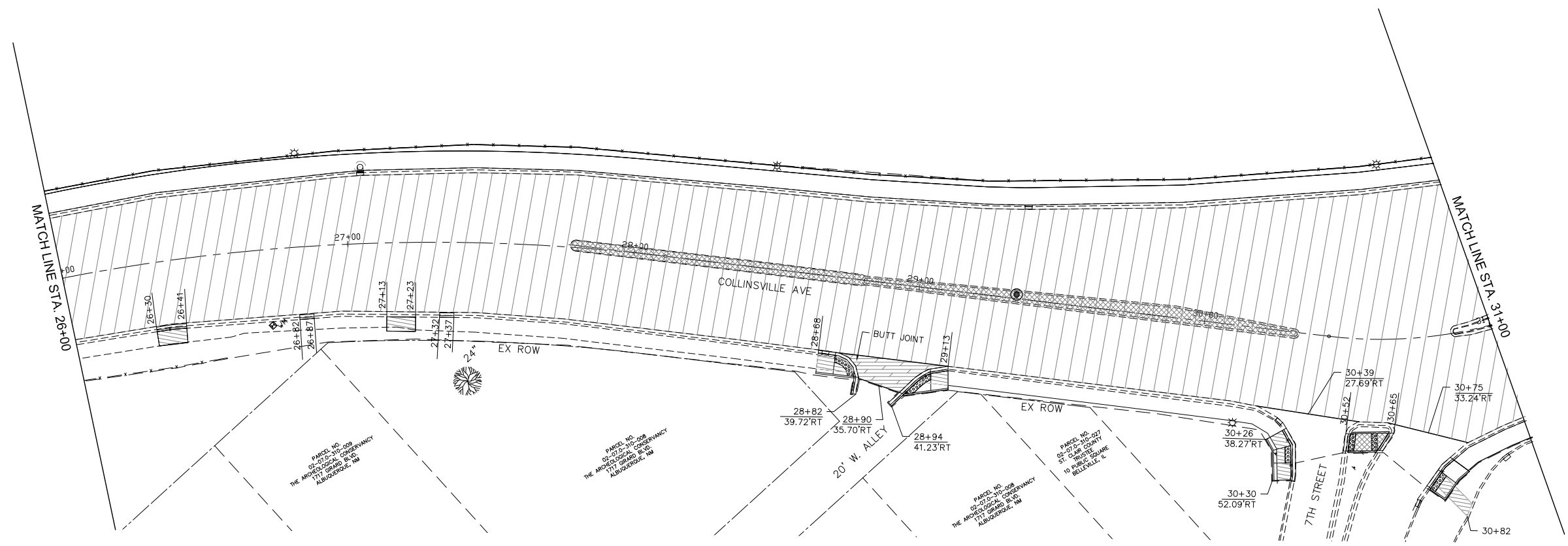
REMOVAL PLAN



Hurst-Rosche, Inc.
 PROFESSIONAL DESIGN NUMBER: 184-000298
 5 Bank Square
 E. St. Louis, IL
 618.398.0890 t
 www.hurst-rosche.com
 HILLSBORO, IL
 MARION, IL
 ARNOLD, MO
 NEOSHO, MO
 NASHVILLE, TN

PREPARED FOR:

CONTRACT 97783
 SECTION 18-00213-02-RS



PARCEL NO.
 02-071-10-008
 THE ARCHBISHOPICAL CONSERVANCY
 1711 GRAND BLVD
 ALBUQUERQUE, NM

PARCEL NO.
 02-071-10-008
 THE ARCHBISHOPICAL CONSERVANCY
 1711 GRAND BLVD
 ALBUQUERQUE, NM

PARCEL NO.
 02-071-10-008
 THE ARCHBISHOPICAL CONSERVANCY
 1711 GRAND BLVD
 ALBUQUERQUE, NM

PARCEL NO.
 02-071-10-007
 ST. CLAIR COUNTY
 MISSOURI
 10 BANK SQUARE
 BELLEVILLE, IL

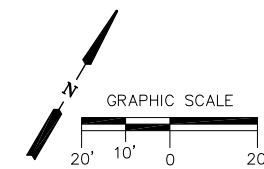
- LEGEND**
- PAVEMENT RESURFACING AREA
 - DRIVEWAY PAVEMENT REMOVAL
 - SIDEWALK REMOVAL
 - PAVEMENT REMOVAL
 - BUTT JOINTS
 - MEDIAN REMOVAL
 - LINEAR REMOVAL ITEM
 - EXISTING MANHOLE
 - MANHOLE TO BE ADJUSTED

PHASE II COLLINSVILLE AVE. IMPROVEMENTS
 CITY OF EAST ST. LOUIS
 ST. CLAIR COUNTY, ILLINOIS

MARK	DATE	DESCRIPTION
	04/2022	

PROJECT NO: 220-1501
 DESIGN: SMS DRAWN: LAO CHECK: TAS

REMOVAL PLAN



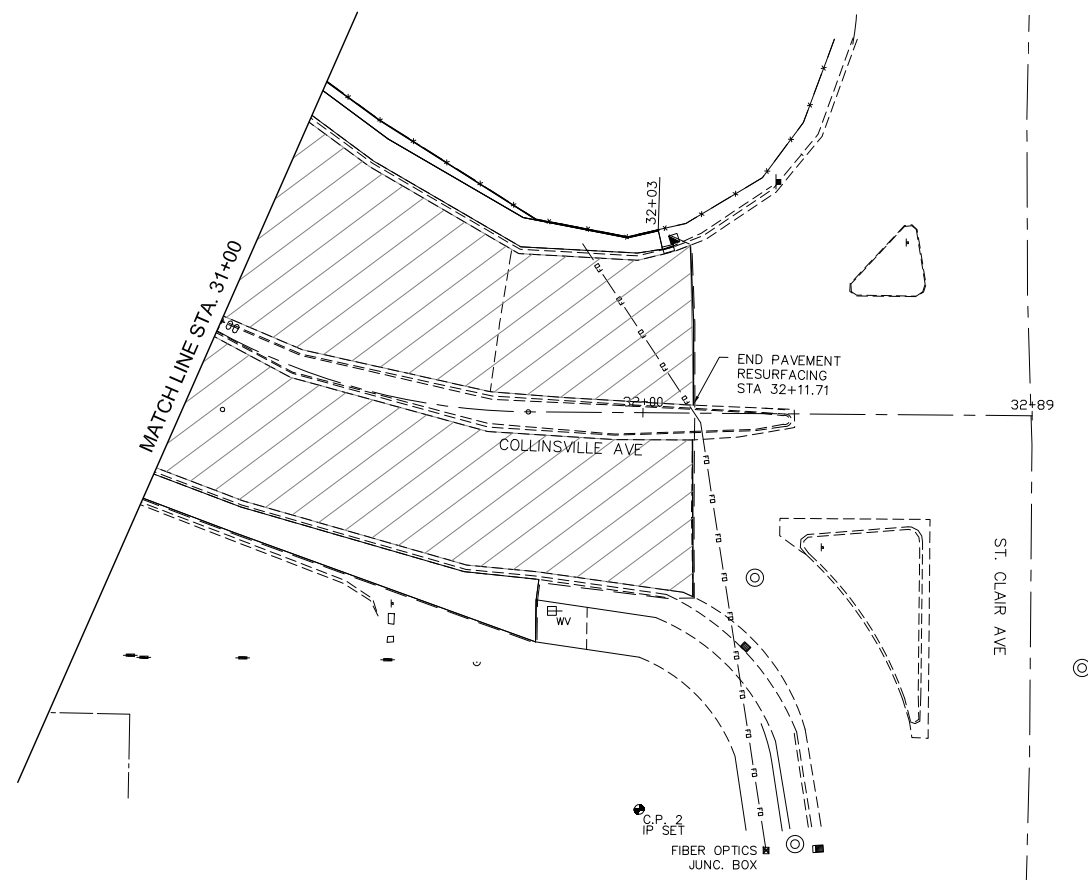
Hurst-Rosche, Inc.
 PROFESSIONAL DESIGN NUMBER: 184-000206
 5 Bank Square
 E. St. Louis, IL
 618.398.0890 t
 www.hurst-rosche.com

HILLSBORO, IL
 MARION, IL
 ARNOLD, MO
 NEOSHO, MO
 NASHVILLE, TN

PREPARED FOR:

CONTRACT 97783
 SECTION 19-00213-02-RS

PHASE II COLLINSVILLE AVE. IMPROVEMENTS
 CITY OF EAST ST. LOUIS
 ST. CLAIR COUNTY, ILLINOIS



- LEGEND**
- PAVEMENT RESURFACING AREA
 - DRIVEWAY PAVEMENT REMOVAL
 - SIDEWALK REMOVAL
 - PAVEMENT REMOVAL
 - BUTT JOINTS
 - MEDIAN REMOVAL
 - LINEAR REMOVAL ITEM
 - EXISTING MANHOLE
 - MANHOLE TO BE ADJUSTED

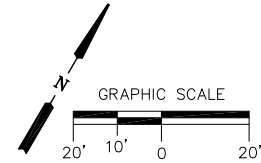
MARK	DATE	DESCRIPTION
	04/2022	

PROJECT NO:	220-1501
DESIGN:	SMS
DRAWN:	LAO
CHECK:	TAS

REMOVAL PLAN

09

SHEET 09 OF 15



Hurst-Rosche, Inc.
PROFESSIONAL DESIGN NUMBER 184-000298

5 Bank Square
E. St. Louis, IL
618.398.0890 t
www.hurst-rosche.com

HILLSBORO, IL
MARION, IL
ARNOLD, MO
NEOSHO, MO
NASHVILLE, TN

PREPARED FOR:

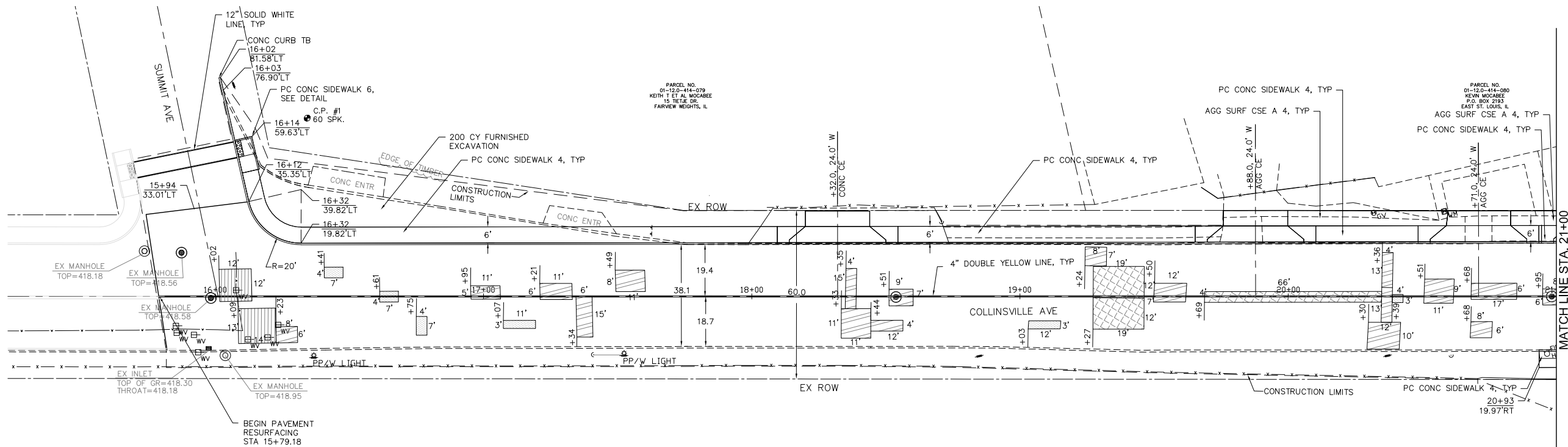
CONTRACT 97783
SECTION 18-00213-02-RS

PHASE II COLLINSVILLE AVE. IMPROVEMENTS
CITY OF EAST ST. LOUIS
ST. CLAIR COUNTY, ILLINOIS

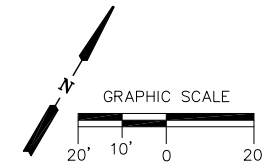
MARK	DATE	DESCRIPTION
	04/2022	

PROJECT NO: 220-1501
DESIGN: SMS DRAWN: LAO CHECK: TAS

ROADWAY PLAN



- LEGEND**
- CLASS C PAVEMENT PATCH, TYPE I, 11 INCH
 - CLASS C PAVEMENT PATCH, TYPE II, 11 INCH
 - CLASS C PAVEMENT PATCH, TYPE III, 11 INCH
 - CLASS C PAVEMENT PATCH, TYPE IV, 11 INCH
 - EXISTING MANHOLE
 - MANHOLE TO BE ADJUSTED



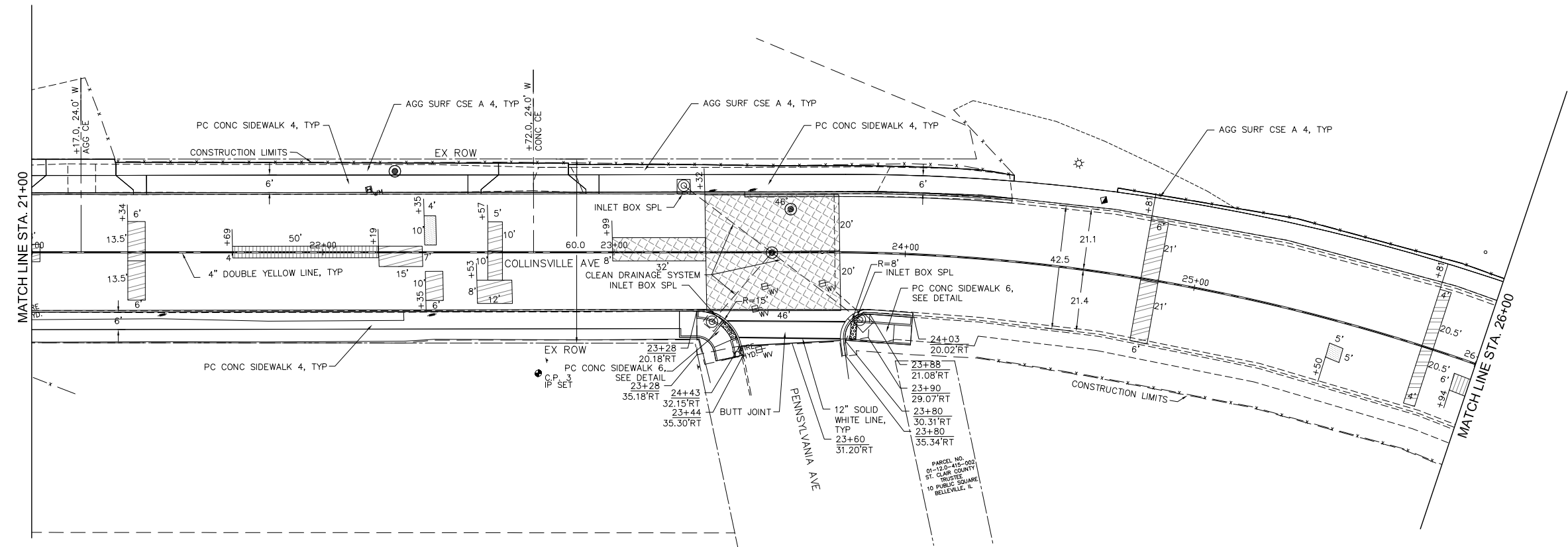
Hurst-Rosche, Inc.
 PROFESSIONAL DESIGN NUMBER: 184-000286
 5 Bank Square
 E. St. Louis, IL
 618.398.0890 t
 www.hurst-rosche.com

HILLSBORO, IL
 MARION, IL
 ARNOLD, MO
 NEOSHO, MO
 NASHVILLE, TN

PREPARED FOR:

CONTRACT 97783
 SECTION 18-00213-02-RS

PHASE II COLLINSVILLE AVE. IMPROVEMENTS
 CITY OF EAST ST. LOUIS
 ST. CLAIR COUNTY, ILLINOIS



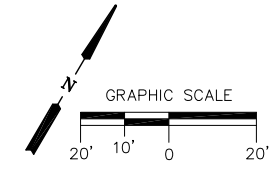
LEGEND

	CLASS C PAVEMENT PATCH, TYPE I, 11 INCH
	CLASS C PAVEMENT PATCH, TYPE II, 11 INCH
	CLASS C PAVEMENT PATCH, TYPE III, 11 INCH
	CLASS C PAVEMENT PATCH, TYPE IV, 11 INCH
	EXISTING MANHOLE
	MANHOLE TO BE ADJUSTED

MARK	DATE	DESCRIPTION
	04/2022	

PROJECT NO: 220-1501
 DESIGN: SMS DRAWN: LAO CHECK: TAS

ROADWAY PLAN

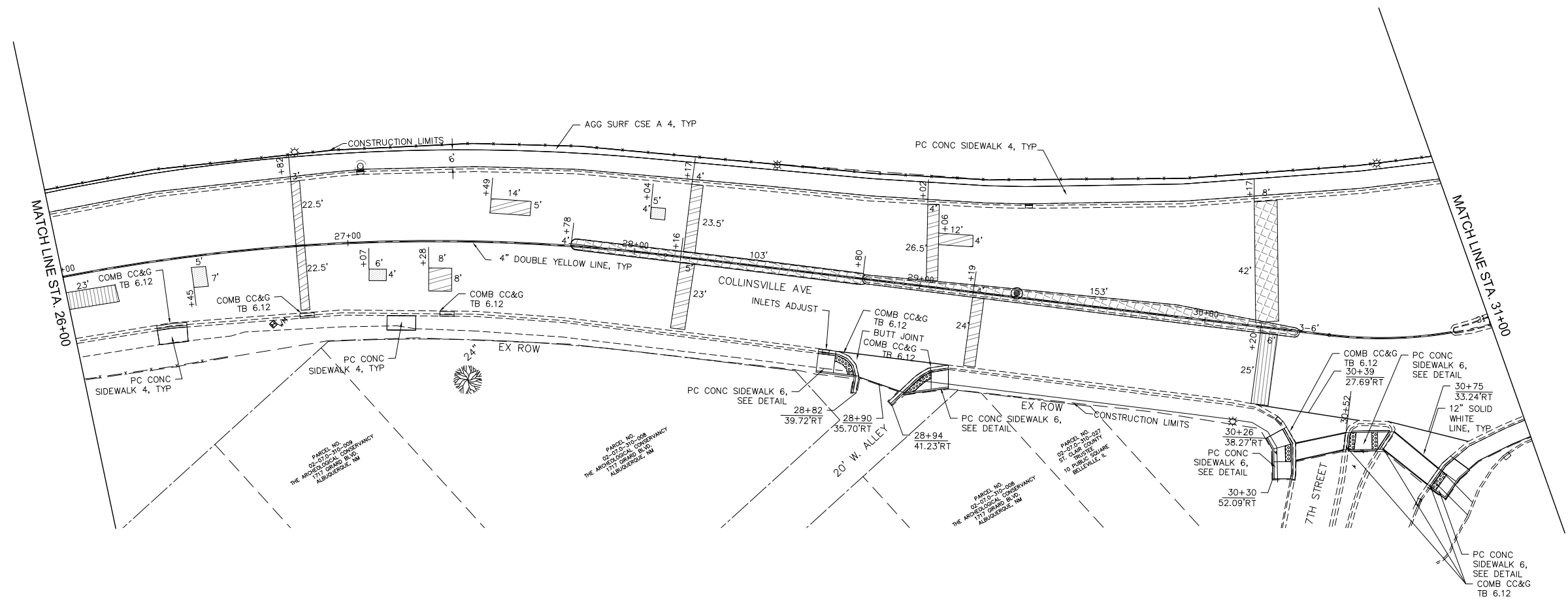


Hurst-Rosche, Inc.
 PROFESSIONAL DESIGN NUMBER: 184-000208
 5 Bank Square
 E. St. Louis, IL
 618.398.0890 t
 www.hurst-rosche.com

HILLSBORO, IL
 MARION, IL
 ARNOLD, MO
 NEOSHO, MO
 NASHVILLE, TN

PREPARED FOR:

CONTRACT 97783
 SECTION 18-00213-02-RS



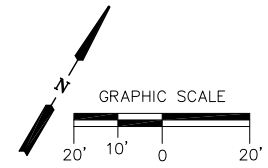
PHASE II COLLINSVILLE AVE. IMPROVEMENTS
 CITY OF EAST ST. LOUIS
 ST. CLAIR COUNTY, ILLINOIS

- LEGEND**
- CLASS C PAVEMENT PATCH, TYPE I, 11 INCH
 - CLASS C PAVEMENT PATCH, TYPE II, 11 INCH
 - CLASS C PAVEMENT PATCH, TYPE III, 11 INCH
 - CLASS C PAVEMENT PATCH, TYPE IV, 11 INCH
 - EXISTING MANHOLE
 - MANHOLE TO BE ADJUSTED

MARK	DATE	DESCRIPTION
	04/2022	

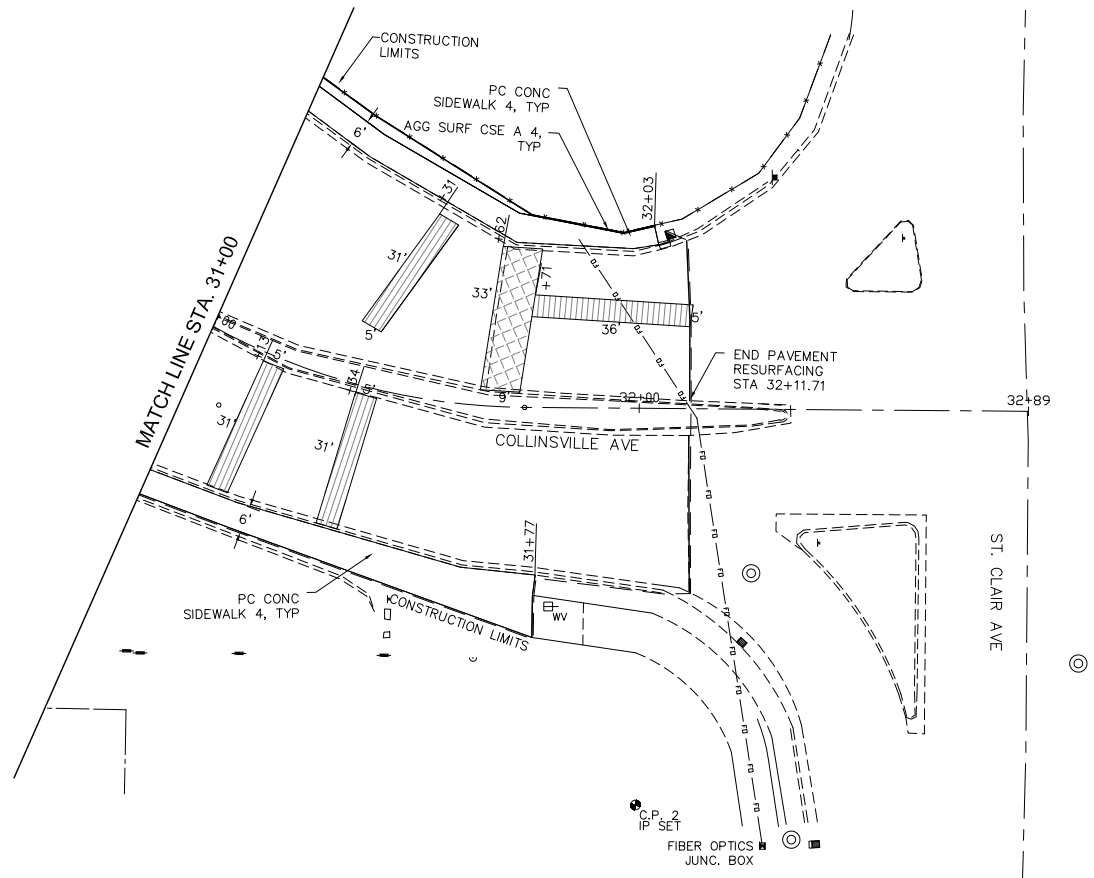
PROJECT NO: 220-1501
 DESIGN: SMS DRAWN: LAO CHECK: TAS

ROADWAY PLAN



PREPARED FOR:

CONTRACT 97783
 SECTION 18-00213-02-RS



LEGEND

	CLASS C PAVEMENT PATCH, TYPE I, 11 INCH
	CLASS C PAVEMENT PATCH, TYPE II, 11 INCH
	CLASS C PAVEMENT PATCH, TYPE III, 11 INCH
	CLASS C PAVEMENT PATCH, TYPE IV, 11 INCH
	EXISTING MANHOLE
	MANHOLE TO BE ADJUSTED

PHASE II COLLINSVILLE AVE. IMPROVEMENTS
 CITY OF EAST ST. LOUIS
 ST. CLAIR COUNTY, ILLINOIS

MARK	DATE	DESCRIPTION
	04/2022	

PROJECT NO: 220-1501
 DESIGN: SMS DRAWN: LAO CHECK: TAS

ROADWAY PLAN



Hurst-Rosche, Inc.
PROFESSIONAL DESIGN NUMBER: 184-002295

5 Bank Square
E. St. Louis, IL
618.398.0890 t
www.hurst-rosche.com

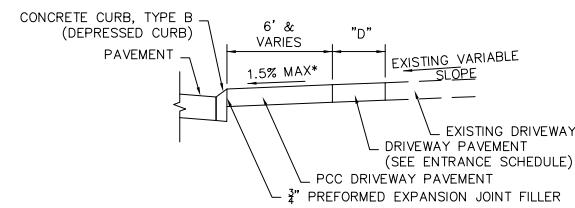
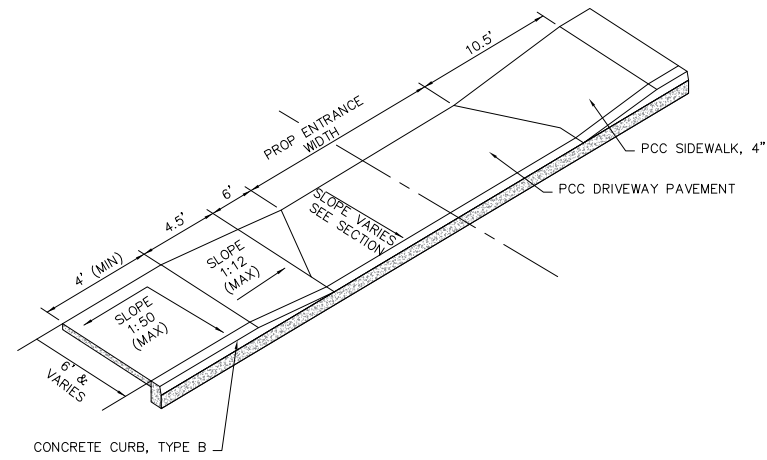
HILLSBORO, IL
MARION, IL
ARNOLD, MO
NEOSHO, MO
NASHVILLE, TN

PREPARED FOR:

CONTRACT 97783
SECTION 18-00213-02-RS

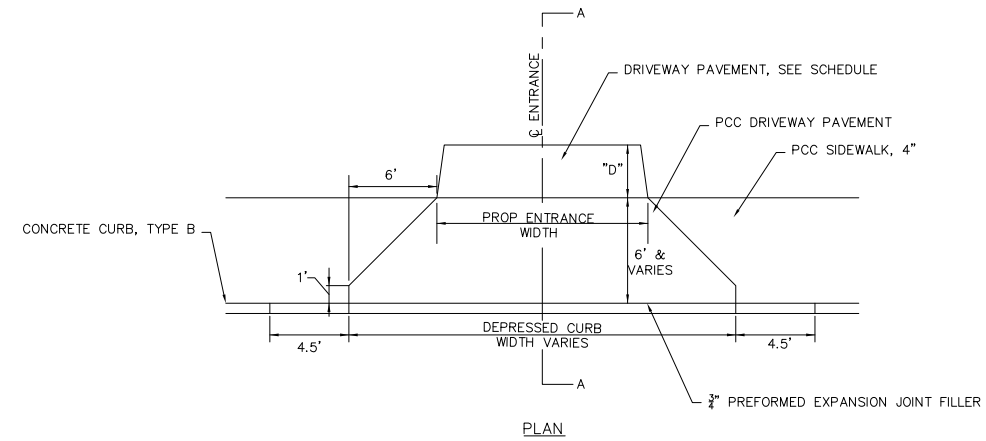
PHASE II COLLINSVILLE AVE. IMPROVEMENTS

CITY OF EAST ST. LOUIS
ST. CLAIR COUNTY, ILLINOIS

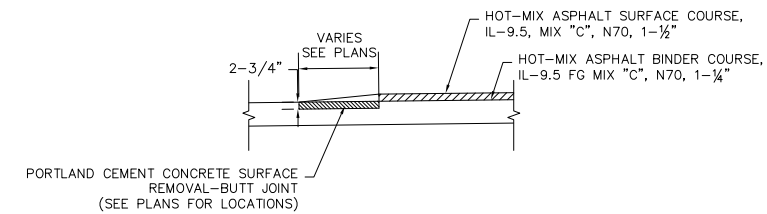


*DRIVEWAY TO MAINTAIN A 4' PEDESTRIAN ACCESSIBLE PATH (PAR) AT THE BACK OF THE DRIVEWAY WITH A 1.5% MAXIMUM SLOPE. THE FIRST 2' FROM THE BACK OF CURB CAN HAVE A VARIABLE SLOPE TO ALLOW THE DRIVEWAY TO BE BUILT WITHIN CONSTRUCTION LIMITS.

SECTION A-A



TYPICAL ENTRANCE DETAIL
NOT TO SCALE



BUTT JOINT DETAIL
NOT TO SCALE

MARK	DATE	DESCRIPTION
	04/2022	

PROJECT NO:	220-1501
DESIGN:	SMS
DRAWN:	LAO
CHECK:	TAS

MISCELLANEOUS
DETAILS



Hurst-Rosche, Inc.
PROFESSIONAL DESIGN NUMBER: 184-002298

5 Bank Square
E. St. Louis, IL
618.398.0890 t
www.hurst-rosche.com

HILLSBORO, IL
MARION, IL
ARNOLD, MO
NEOSHO, MO
NASHVILLE, TN

PREPARED FOR:

CONTRACT 97783
SECTION 18-00213-02-RS

PHASE II COLLINSVILLE AVE. IMPROVEMENTS
CITY OF EAST ST. LOUIS
ST. CLAIR COUNTY, ILLINOIS

MARK	DATE	DESCRIPTION
	04/2022	

PROJECT NO: 220-1501
 DESIGN: SMS DRAWN: LAO CHECK: TAS

MISCELLANEOUS
DETAILS

