

INDEX OF SHEETS

SHEET NO	TITLE	06/17/2022 LETTING ITEM 228
1	COVER SHEET	
2	GENERAL NOTES; COMMITMENTS	
3	SUMMARY OF QUANTITIES	
4-6	TYPICAL SECTIONS	
7-8	SCHEDULE OF QUANTITIES	
9	HORIZONTAL ALIGNMENT, TIES & BENCHMARK SHEETS	
10-16	PLAN SHEETS	
17	TRAFFIC CONTROL PLAN	
18-19	DETAILS	
20	AMEREN LIGHTING DETAILS	

STATE OF ILLINOIS  
DEPARTMENT OF TRANSPORTATION  
STP-S FUNDS  
VILLAGE OF SAUGET, ILLINOIS

SAUGET BUSINESS BLVD. SAFETY IMPROVEMENTS - PHASE 1  
PROJECT NO.

ST. CLAIR COUNTY SECTION 20-00304-07-SP

IDOT SECTION 18-00009-05-SP

JOB NO. C-98-013-22

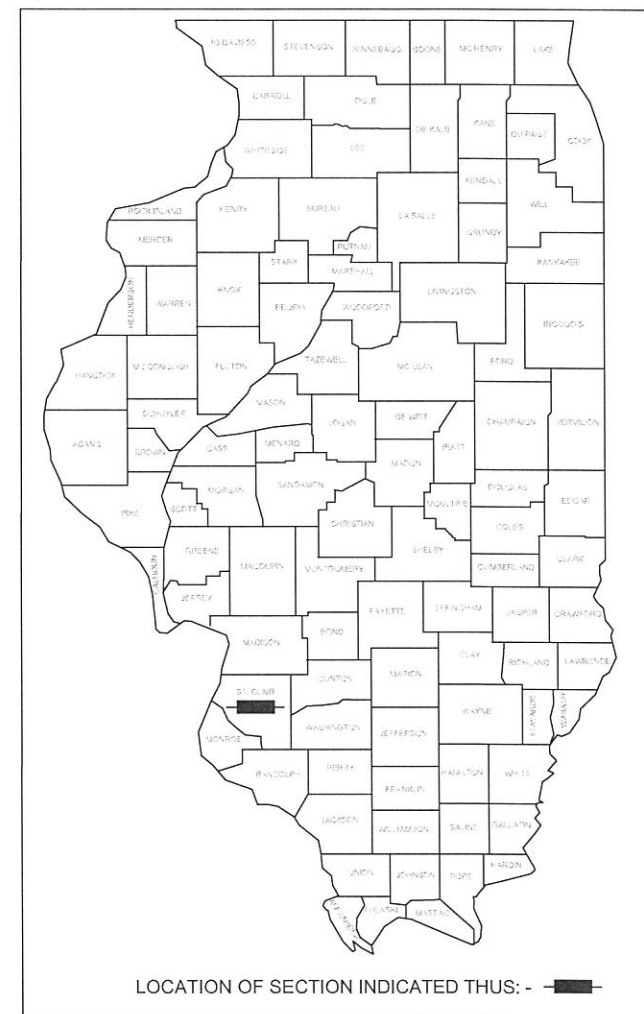
FEDERAL PROJECT NO. DKZD(763)

FAU 9212

ST. CLAIR COUNTY

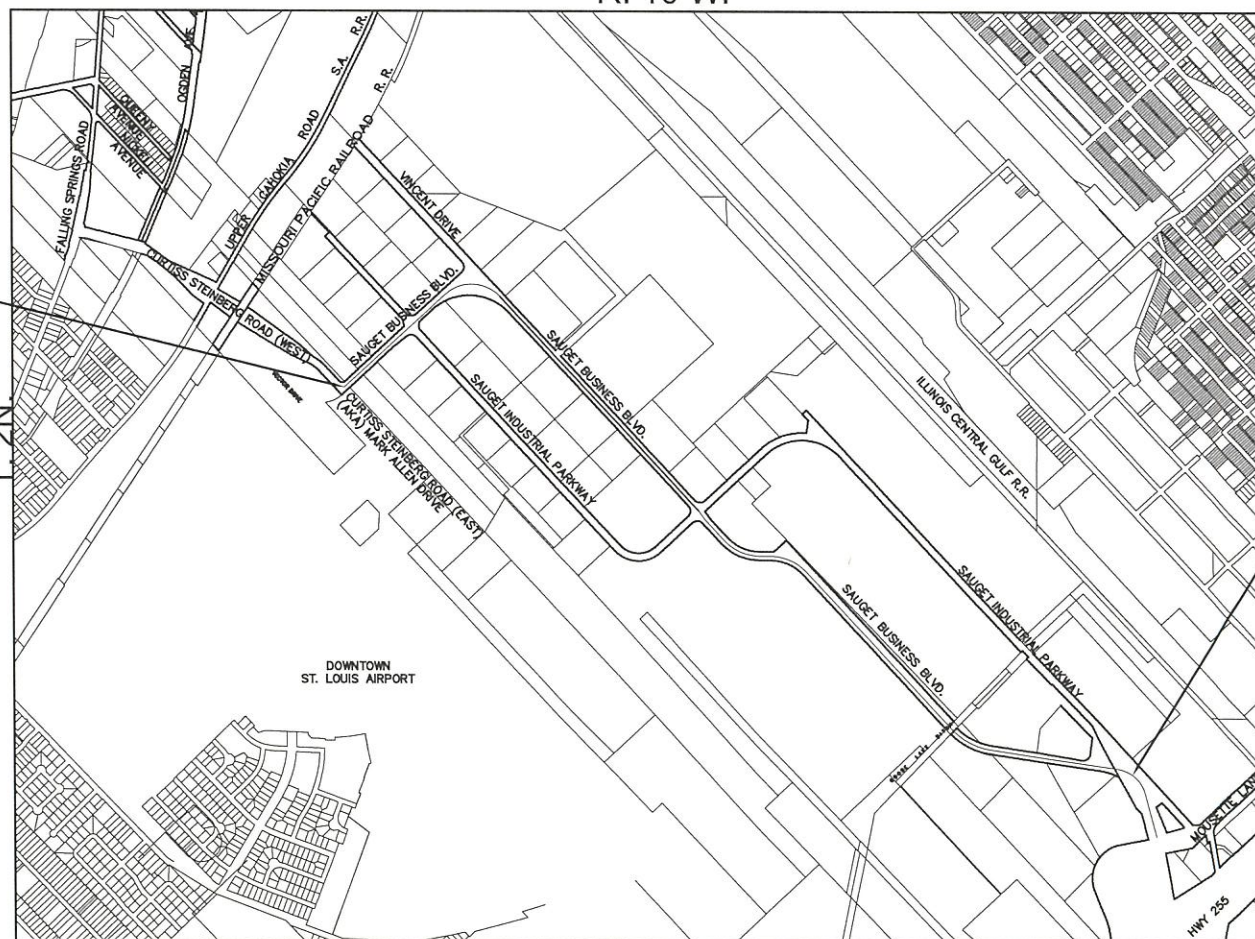
R. 10 W.

F.A. RTE.	SECTION	COUNTY	TOTAL SHEETS	SHEET NO.
9212	18-00009-05-SP	ST. CLAIR	20	1
FEDERAL AID PROJECT		ILLINOIS	CONTRACT NO. 97780	



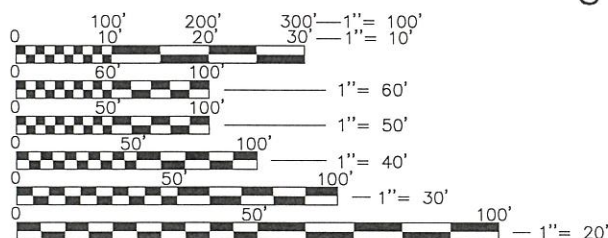
LIST OF STANDARDS

000001-08	STANDARD SYMBOLS, ABBREVIATIONS, AND PATTERNS
630001-12	STEEL PLATE BEAM GUARDRAIL
630301-09	SHOULDER WIDENING FOR TYPE 1 (SPECIAL) GUARDRAIL TERMINALS
701006-05	OFF-ROAD OPERATIONS, 2L, 2W, 15'(4.5 M) TO 24"(600 MM) FROM PAVEMENT EDGE
701502-09	URBAN LANE CLOSURE, 2L, 2W, WITH BI-DIRECTIONAL LEFT TURN
701311-03	LANE CLOSURE, 2L, 2W, MOVING OPERATIONS - DAY ONLY
701701-10	URBAN LANE CLOSURE, MULTILANE INTERSECTION
701901-08	TRAFFIC CONTROL DEVICES
725001-01	OBJECT TERMINAL MARKER
780001-05	TYPICAL PAVEMENT MARKINGS



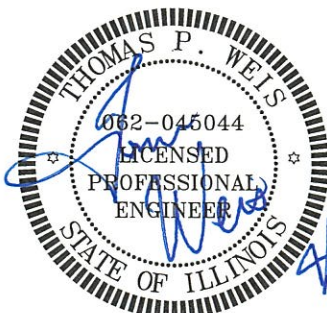
BEGIN PROJECT  
STA: 106+09

END PROJECT  
STA: 212+60.83



FULL SIZE PLANS HAVE BEEN PREPARED USING STANDARD ENGINEERING SCALES. REDUCED SIZED PLANS WILL NOT CONFORM TO STANDARD SCALES. IN MAKING MEASUREMENTS ON REDUCED PLANS, THE ABOVE SCALES MAY BE USED.

J.U.L.I.E.  
JOINT UTILITY LOCATION INFORMATION FOR EXCAVATION  
1-800-892-0123  
OR 811



THOMAS P. WEIS  
Name  
3/25/2022  
Date  
11/30/2023  
License Expiration

ROADWAY CLASSIFICATION

SAUGET BUSINESS BLVD.	MAJOR COLLECTOR 35 MPH 5,600 ADT CURRENT
SAUGET BUSINESS BLVD.	ADT 2036: 10,826

LENGTH OF PROJECT

SAUGET BUSINESS BLVD.(GROSS):	11,131 FT = 2.108 MI
(NET):	10,439 FT = 1.977 MI

TOTAL LENGTH OF PROJECT: 11,131 FT = 2.108 MI

LOCATION MAP  
N.T.S.

STATE OF ILLINOIS  
DEPARTMENT OF TRANSPORTATION

Village of Sauget  
APPROVED 4/20 20 22  
Richard Sauget Jr. - Village Mayor

St. Clair County  
APPROVED 4/20 20 22  
Norman Etling - County Engineer

PASSED 4/21 20 22  
DISTRICT 8 ENGINEER OF LOCAL ROADS & STREETS  
4/21 20 22  
Kirk Bran - REGION 5 ENGINEER  
RELEASING FOR BID BASED UPON LIMITED REVIEW

WDG PN: 7313-18-4

**W****G** Weis Design Group  
1403 Nickell Dr  
Sauget, IL 62206  
(618) 874-0320  
www.weisdesigngroup.com

16296 Westwoods  
Business Park Dr.  
Ellisville, Mo. 63021  
(636) 207-0832  
f. (636) 207-0328

**EXISTING**

**LEGEND**

**NEW**

	FIRE HYDRANT	
	MANHOLE	
	LIGHT STANDARD	
+660.5	SPOT ELEVATION	+660.5
	STREET SIGN	
	RR SIGNAL	
	UTILITY MARKER	
	WATER METER	
	GATE VALVE	
	UTILITY METER	
	UTILITY POLE	
	UTILITY POLE WITH LIGHT	
	UTILITY VALVE	
	OIP	
	FENCE	
	ROW	
	PROPERTY LINE	
	CENTER LINE	
	EASEMENT	
	CURB & GUTTER	
	EDGE OF PAVEMENT	
	EDGE OF BITUMINOUS SHOULDER	
	EDGE OF AGGREGATE SHOULDER	
	GRADING LIMITS	
	CLEAN OUT PRESSURE SEWER (COPS)	
	LIFT STATION	
	VALVE VAULT	
	OVERHEAD ELECTRIC	
	NATURAL GAS SERVICE	
	WATER MAIN	
	FIBER OPTIC CABLE	
	PRESSURE SEWER	
	SEWER	

**ABBREVIATIONS**

ABO	ADJUST BY OTHERS	HPNG	HIGH PRESSURE NATURAL GAS
AI	AREA INLET	HW	HIGH WATER
ATG	ADJUST TO GRADE	ID	INTERIOR DIAMETER
BC	BACK OF CURB	LS	LIGHT STANDARD
BO	BY OTHERS	MIN	MINIMUM
BW	BOTTOM OF WALL	N/F	NOW OR FORMERLY
CA	CABLE TELEVISION	NIC	NOT IN CONTRACT
CFS	CUBIC FEET PER SECOND	OE	OVERHEAD ELECTRIC
CHK	CHECK	OIP	OLD IRON PIPE
CI	CURB INLET	OT	OVERHEAD TELEPHONE
CO	CLEANOUT	PEDT	PEDESTRIAN TRAFFIC
DAI	DOUBLE AREA INLET	REQD	REQUIRED
DCI	DOUBLE CURB INLET	PR	PROPOSED
DND	DO NOT DISTURB	TBA	TO BE ABANDONED
DS	DOWNSPOUT	TBR&R	TO BE REMOVED & REPLACED
DT	DRAINTILE	TBR&REL	TO BE REMOVED & RELOCATED
ESMT	EASEMENT	T	TOP
EX	EXISTING	TC	TOP OF CURB
FES	FLARED END SECTION	TCE	TEMPORARY CONSTRUCTION EASEMENT
FF	FINISHED FLOOR	TSCL	TEMPORARY SLOPE & CONSTRUCTION LICENSE
FM	FORCE MAIN	TW	TOP OF WALL
FO	FIBER OPTIC	UE	UNDERGROUND ELECTRIC
GI	GRATE INLET	UIP	USE IN PLACE
HGL	HYDRAULIC GRADE LINE	UP	UTILITY POLE
		UT	UNDERGROUND TELEPHONE

**GENERAL NOTES:**

- CONTRACTOR TO CONTAIN FUEL AND HAZARDOUS WASTE AND PROVIDE CONTAINMENT CELL(S) FOR ANY MATERIALS BROUGHT TO THE SITE.
- THE CONTRACTOR SHALL PROVIDE TRAFFIC CONTROL IN THE FORM OF FLAGMEN, BARRICADES, ETC. AS REQUIRED BY MANUAL ON UNIFORM TRAFFIC CONTROL DEVICES. AND/OR IDOT TRAFFIC CONTROL STANDARDS.
- CONTRACTOR TO SEED ALL GRASS AREAS DISTURBED BY THIS CONSTRUCTION UNLESS OTHERWISE NOTED. BACKFILL, FINISH GRADE AND SEED BEHIND NEW ROADS AND SIDEWALK WITH CLEAN MATERIAL. PROVIDE SMOOTH TRANSITION WITH EXISTING GRADES.
- INTERIM STORMWATER DRAINAGE CONTROL (SEDIMENTATION RUNOFF CONTROL, SILTATION BASINS, ETC.) SHALL BE REQUIRED AS DIRECTED. SEDIMENTATION RUNOFF CONTROL DEVICES SHALL BE MAINTAINED BY THE CONTRACTOR DURING GRADING OPERATIONS AND UNTIL SUFFICIENT VEGETATION IS ESTABLISHED TO PREVENT EROSION. TEMPORARY SEDIMENTATION RUNOFF DEVICES SHALL BE REMOVED UPON COMPLETION OF RE-VEGETATION.
- EXISTING UTILITY LOCATIONS SHOWN ON THESE PLANS WERE COMPILED FROM THE BEST AVAILABLE RECORDS. CONTRACTOR SHALL COORDINATE WITH THE UTILITY COMPANIES TO ESTABLISH EXACT LOCATIONS, DEPTHS, AND POSSIBLE RELOCATION OF THE MAINS PRIOR TO CONSTRUCTION. GAS, ELECTRIC, TELECOMMUNICATION, AND WATER LINES TO BE RELOCATED BY OTHERS. CONTRACTOR SHALL COORDINATE HIS EFFORTS WITH THE UTILITY COMPANIES. EXACT DISTANCES AND LOCATIONS OF UTILITIES TO BE RELOCATED HAVE NOT YET BEEN DETERMINED. ALL UTILITIES, EITHER SHOWN OR NOT SHOWN, IN DIRECT CONFLICT WITH THIS CONSTRUCTION SHALL BE RELOCATED BY OTHERS (RESPECTIVE UTILITY COMPANY). CONTRACTOR SHALL COORDINATE THE WORK WITH EACH UTILITY COMPANY AFFECTED. THE EXISTING UTILITY LOCATIONS SHOWN ON THESE PLANS WERE COMPILED FROM THE BEST AVAILABLE RECORDS. CONTRACTORS SHALL COORDINATE WITH THE VARIOUS UTILITY COMPANIES TO ESTABLISH EXACT LOCATIONS AND DEPTHS PRIOR TO EXCAVATING. CONTRACTOR SHALL BE RESPONSIBLE FOR PROTECTING AND SUPPORTING ALL UTILITIES DURING CONSTRUCTION OPERATIONS. CONTRACTOR SHALL CONTACT THE JOINT UTILITY LOCATING INFORMATION FOR EXCAVATORS (JULIE) AT 1-800-892-0123 FOR LOCATING THE VARIOUS UTILITIES DURING CONSTRUCTION.
- THE CONTRACTOR SHALL NOTIFY EACH AFFECTED PROPERTY OWNER A MINIMUM OF 48 HOURS PRIOR TO COMMENCEMENT OF ANY CONSTRUCTION AND/OR GRADING.
- ALL BUSINESSES SHALL HAVE ACCESS AT ALL TIMES.
- THE ILLINOIS NGS DATA SHEET DESIGNATION #D-284 WAS USED FOR ELEVATIONAL BENCHMARK AND STATE PLANE COORDINATE LOCATION. ELEVATION = 430.35.

**NOTES:**

- AMEREN IL WORK INCLUDES:**
- ELECTRICAL SERVICE INSTALLATION
  - LIGHTING CONTROLLER, POLE MOUNTED, 240VOLT, 60AMP
  - TRANSFORMER, GENERAL PURPOSE
  - POWER PEDESTALS
  - LUMINAIRE, LED, SPECIAL
  - LIGHT POLE FOUNDATION, SPECIAL
  - DISTRIBUTION POLE
  - ELECTRICAL WIRING - 240V, 3 WIRE SYSTEM
  - LIGHT STANDARD POLES (35' TALL)
  - 6' LED LUMINAIRE BRACKET
  - OBTAIN PROPER PERMIT REQUIRED TO WORK ON ST. CLAIR COUNTY RIGHT-OF-WAY.

CONTRACTOR IS REQUIRED TO CONTACT MR. CORY GOESTENKORS WITH AMEREN ILLINOIS AT (618) 482-2236 WITH A 1-MONTH ADVANCE NOTICE FOR INSTALL IMPROVEMENTS ASSOCIATED WITH THE PROPOSED LIGHTING SYSTEM.

**COMMITMENTS:**

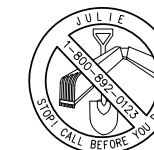
-NONE

**EMERGENCY CONTACTS:**

MR. MIKE WILLIAMS PUBLIC WORKS DIRECTOR 618-337-4683 (WORK) 618-779-0449 (MOBILE)	CHIEF JAMES JONES CHIEF OF POLICE 618-332-6500 (WORK)	CHIEF ROGER THORNTON FIRE CHIEF 618-332-6700 (WORK)
--	---	---

**UTILITY INFORMATION**

ILLINOIS-AMERICAN WATER CO 100 N WATER WORKS DR BELLEVILLE, IL 62223 (618) 236-1180	AMEREN UE (ELECTRIC) 500 EAST BROADWAY EAST ST. LOUIS, IL 62201 (618) 482-2213
AMEREN ILLINOIS (GAS) 1050 WEST BOULEVARD P.O. BOX 428 BELLEVILLE, IL 62221-0428 (618) 236-4301	VILLAGE OF CAHOKIA (SANITARY) 2525 MOUSETTE LN. SAUGET, IL 62206 (618) 337-3302
AT&T (COMMUNICATIONS) 1420 FRONTAGE RD O'FALLON, IL 63369 (618) 624-4004	CHARTER COMMUNICATIONS SPECTRUM (BURIED FIBER) 13545 BARRETT PKWY. BALLWIN, MO 63021 (314) 858-3536



**CALL BEFORE YOU DIG!**  
1-800-892-0123

CALL "JULIE" TO HAVE LOCATIONS MARKED IN THE FIELD AND "IDOT" FOR UNDERGROUND LOCATES WITHIN THE RIGHT-OF-WAY. SUBSCRIBING UTILITIES REQUIRE 48 HOURS NOTICE PRIOR TO CONSTRUCTION.

**BEFORE YOU DIG**

**HOT MIX ASPHALT TABLE MIXTURES**

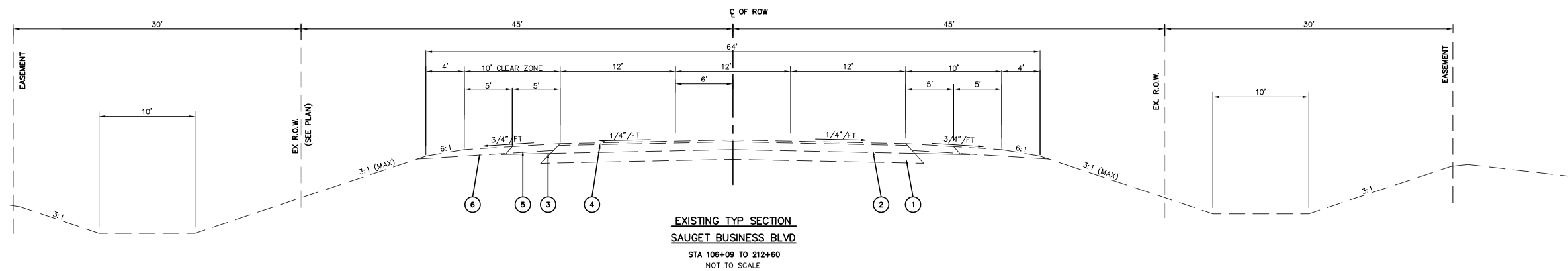
MIXTURE USE	BASE CSE	SURFACE	INCIDENTAL SURFACE
AC/PC	PG 64-22	PG 64-22	PG 64-22
RAP % (MAX)	"See Sp. Prov."	"See Sp. Prov."	"See Sp. Prov."
DESIGN AIR VOID	4.0% @ Ndes=70	4.0% @ Ndes=70	4.0% @ Ndes=70
MIX COMPOSITION			
(GRADATION MIXTURE)	IL 19.0	IL 9.5	
FRICTION AGG.	MIXTURE "B"	MIXTURE "D"	MIXTURE "C"

FILE NAME = T:\Clients\SAUGET\7313-18-4 STP SBB Safety\7313-18-4_FINAL COVER_4-18-2022.dwg	USER NAME = cro	DESIGNED - TPW	REVISED -	<b>STATE OF ILLINOIS DEPARTMENT OF TRANSPORTATION</b>	VILLAGE OF SAUGET SAUGET BUSINESS BLVD.- SAFETY IMPROVEMENTS (GENERAL NOTES & COMMITMENTS)		RTE.	SECTION	COUNTY	TOTAL SHEETS	SHEET NO.
	Impr Ph 1 Grant App\CIVIL DWG\FINAL\	DRAWN - CRO	REVISED -		9212	18-00009-05-SP	ST. CLAIR	20	2		
	PLOT SCALE = N/A	CHECKED - MJS	REVISED -		CONTRACT NO. 97780			ILLINOIS FEDERAL AID PROJECT			
	PLOT DATE = Apr 18, 2022 - 2:47PM	DATE - 4-18-2022	REVISED -		SCALE: N/A	SHEET NO. 1 OF 1 SHEETS	STA. TO STA.				

CODE NO.	ITEM	UNIT	QUANTITY
	<b>CONTRACTOR</b>		
31100200	SUBBASE GRANULAR MATERIAL, TYPE A	CU YD	301
35501324	HOT-MIX ASPHALT BASE COURSE, 10"	SQ YD	1804
40600275	BITUMINOUS MATERIALS (PRIME COAT)	POUND	4059
40600290	BITUMINOUS MATERIALS (TACK COAT)	POUND	812
40600400	MIXTURE FOR CRACKS, JOINTS, AND FLANGEWAYS	TON	3
40604062	HOT-MIX ASPHALT SURFACE COURSE, IL-9.5, MIX "D", N70	TON	202
40800050	INCIDENTAL HOT-MIX ASPHALT SURFACING	TON	3
44000100	PAVEMENT REMOVAL	SQ YD	1804
△ 63000001	STEEL BEAM GUARDRAIL, TYPE A, 6 FOOT POSTS	FOOT	300
△ 63100167	TRAFFIC BARRIER TERMINAL, TYPE 1 (SPECIAL) TANGENT	EACH	2
67100100	MOBILIZATION	L SUM	1
70103815	TRAFFIC CONTROL SURVEILLANCE	CAL DA	150
70107025	CHANGEABLE MESSAGE SIGN	CAL DA	150
70300100	SHORT TERM PAVEMENT MARKING	FOOT	4913
70300150	SHORT TERM PAVEMENT MARKING REMOVAL	SQ FT	1228
△ 72000100	SIGN PANEL - TYPE 1	SQ FT	15
△ 72501000	TERMINAL MARKER - DIRECT APPLIED	EACH	2
△ 72900100	METAL POST - TYPE A	(FOOT)	55
△ 78000100	THERMOPLASTIC PAVEMENT MARKING - LETTERS AND SYMBOLS	SQ FT	720
△ 78000200	THERMOPLASTIC PAVEMENT MARKING LINE 4"	FOOT	26,829
△ 78000600	THERMOPLASTIC PAVEMENT MARKING LINE 12"	FOOT	105
△ 78000650	THERMOPLASTIC PAVEMENT MARKING - LINE 24"	FOOT	114
△ 78200005	GUARDRAIL REFLECTORS, TYPE A	EACH	8
△ 81028350	UNDERGROUND CONDUIT, PVC, 2" DIA.	FOOT	10448
△ X0325379	DIRECTIONAL BORING	FOOT	10448
X7010216	TRAFFIC CONTROL AND PROTECTION, (SPECIAL)	L SUM	1
Z0013798	CONSTRUCTION LAYOUT	L SUM	1

△ SPECIALTY ITEMS

FILE NAME = T:\Clients\SAUGET\7313-18-4 STP_SBB Safety\7313-18-4_SUMMARY OF QUANTITIES.dwg	USER NAME = cro Impr Ph 1 Grant App\CIVIL DWG\FINAL\	DESIGNED - TPW DRAWN - CRO	REVISED - REVISED -	<b>STATE OF ILLINOIS DEPARTMENT OF TRANSPORTATION</b>	VILLAGE OF SAUGET SAUGET BUSINESS BLVD. - SAFETY IMPROVEMENTS (SUMMARY OF QUANTITIES)		RTE. 9212	SECTION 18-00009-05-SP	COUNTY ST. CLAIR	TOTAL SHEETS 20	SHEET NO. 3
PLOT SCALE = N/A	CHECKED - MJS	REVISED -	SCALE: N/A		SHEET NO. 1 OF 1 SHEETS	STA. TO STA.	CONTRACT NO. 97780				
PLOT DATE = Apr 22, 2022 - 1:19PM	DATE - 4-22-2022	REVISED -	ILLINOIS FEDERAL AID PROJECT								

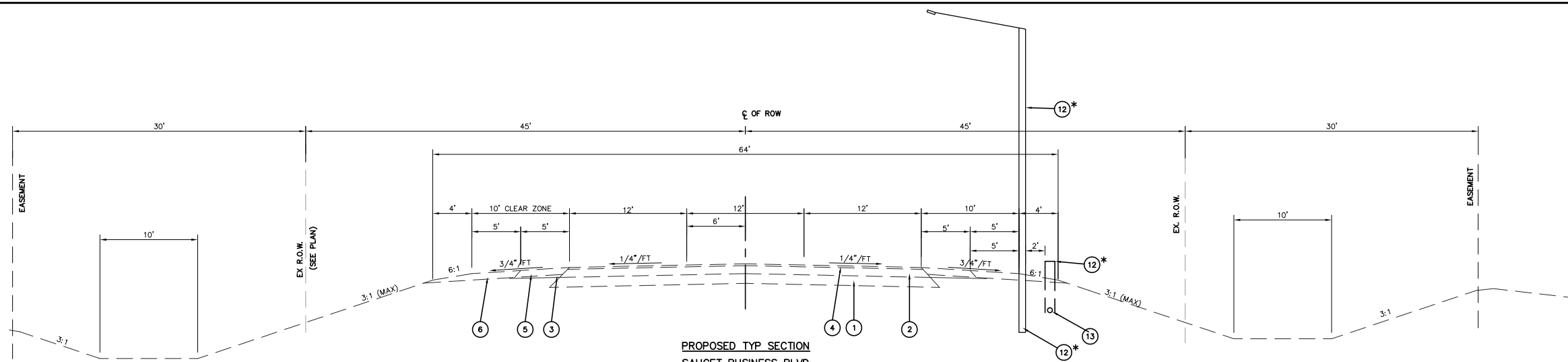


\* FOR INFORMATIONAL PURPOSE ONLY.  
WORK PERFORMED BY OTHERS (AMEREN IL)

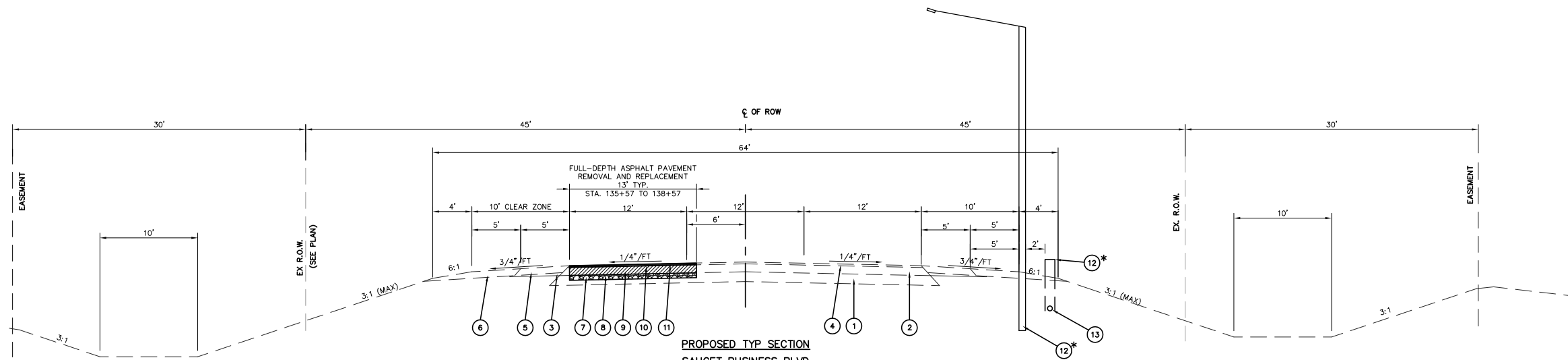
PROPOSED 35' TALL STREET LIGHT POLE & LUMINAIRE (5' EMBEDMENT, 30' MOUNTING HEIGHT) @ 250' SPACING. LUMINAIRE BY LEOTEK #GCL1-80J-MV-30K-3R-GY-220S (COMPLIES WITH AMEREN #31-51-645). AMEREN IL ELECTRIC TO INSTALL WIRING, HANDHOLES, FOOTINGS/FOUNDATIONS FOR EACH POLE, AND ANY APPURTENANCES NEEDED FOR PLACEMENT OF TRANSFORMERS, TRANSFORMERS, STREET LIGHTS (POLES & LUMINAIRES), AND WILL MAKE ALL FINAL CONNECTIONS.

- ① EXISTING LIME MODIFIED SOILS 12"
- ② EXISTING - HOT-MIX ASPHALT BASE COURSE 9.75"
- ③ EXISTING - SUBBASE GRANULAR MATERIAL, TYPE C
- ④ EXISTING - HOT-MIX ASPHALT CONCRETE SURFACE COURSE 2.25"
- ⑤ EXISTING - HOT-MIX ASPHALT SHOULDERS, 8"
- ⑥ EXISTING - AGGREGATE SHOULDERS, TYPE A 8"
- ⑦ PROPOSED - SUBBASE GRANULAR MATERIAL, TYPE A 6"
- ⑧ PROPOSED - BITUMINOUS MATERIALS (PRIME COAT)
- ⑨ PROPOSED - HOT-MIX ASPHALT BASE COURSE, 10"
- ⑩ PROPOSED - BITUMINOUS MATERIALS (TACK COAT)
- ⑪ PROPOSED - HOT-MIX ASPHALT SURFACE, IL9.5, MIX "D", N90, 2"
- ⑫ PROPOSED 35' TALL STREET LIGHT POLE & LUMINAIRE (5' EMBEDMENT, 30' MOUNTING HEIGHT) @ 250' SPACING. LUMINAIRE BY LEOTEK #GCL1-80J-MV-30K-3R-GY-220S (COMPLIES WITH AMEREN #31-51-645). CONTRACTOR TO INSTALL CONDUIT W/ PULL WIRES ONLY. AMEREN IL ELECTRIC TO INSTALL WIRING, HANDHOLES, FOOTINGS/FOUNDATIONS FOR EACH POLE, AND ANY APPURTENANCES NEEDED FOR PLACEMENT OF TRANSFORMERS, TRANSFORMERS, STREET LIGHTS (POLES & LUMINAIRES), AND WILL MAKE ALL FINAL CONNECTIONS.
- ⑬ PROPOSED 2" DIAMETER, SCHEDULE 40 PVC CONDUIT - INSTALLED BY CONTRACTOR (DIRECTIONAL BORING). WIRING INSTALLED & FINAL CONNECTIONS BY AMEREN ILLINOIS. (INCLUDING PEDESTAL)
- ⑭ PROPOSED GUARDRAIL (#630001 TYPE A) SEE PLAN FOR EXACT LOCATIONS

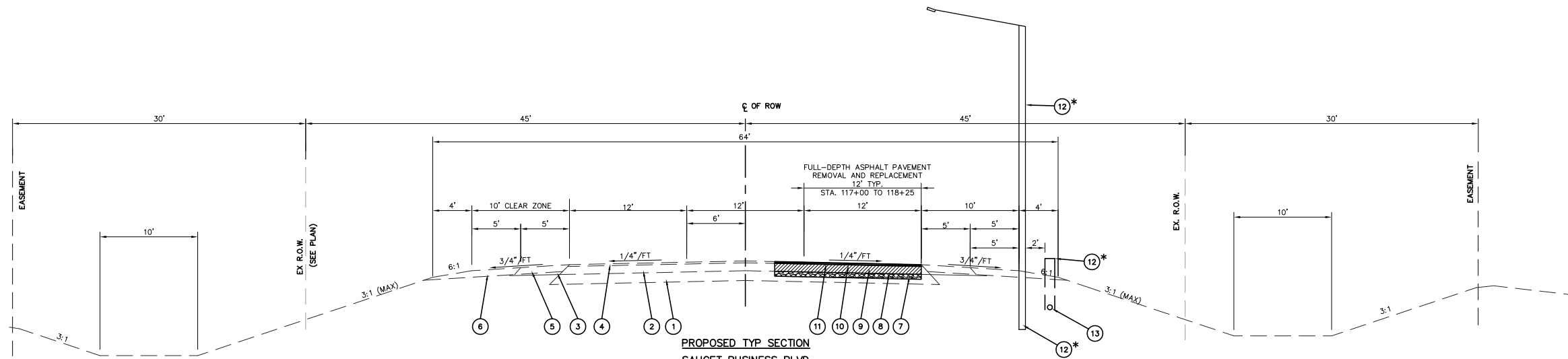
FILE NAME =	USER NAME = cro	DESIGNED - TPW	REVISED -	<b>STATE OF ILLINOIS DEPARTMENT OF TRANSPORTATION</b>	VILLAGE OF SAUGET SAUGET BUSINESS BLVD. - SAFETY IMPROVEMENTS (TYPICAL SECTIONS)			RTE.	SECTION	COUNTY	TOTAL SHEETS	SHEET NO.
T:\Clients\SAUGET\7313-18-4 STP SBB Safety	Impr Ph 1 Grant App\CIVIL DWG\FINAL\	DRAWN - CRO	REVISED -		9212	18-00009-05-SP	ST. CLAIR	20	4	CONTRACT NO. 97780		
7313-18-4 FINAL TYPICAL SECTIONS.dwg		CHECKED - MJS	REVISED -		SCALE: N.T.S.	SHEET NO. 1 OF 1 SHEETS	STA.	TO STA.		ILLINOIS FEDERAL AID PROJECT		
	PLOT DATE = Apr 18, 2022 - 3:38PM	DATE - 4-18-2022	REVISED -									



**PROPOSED TYP SECTION  
SAUGET BUSINESS BLVD**  
STA 138+57 TO 141+27  
(LOOKING EAST)  
NOT TO SCALE



**PROPOSED TYP SECTION  
SAUGET BUSINESS BLVD**  
STA 135+57 TO 138+57  
(LOOKING EAST)  
NOT TO SCALE



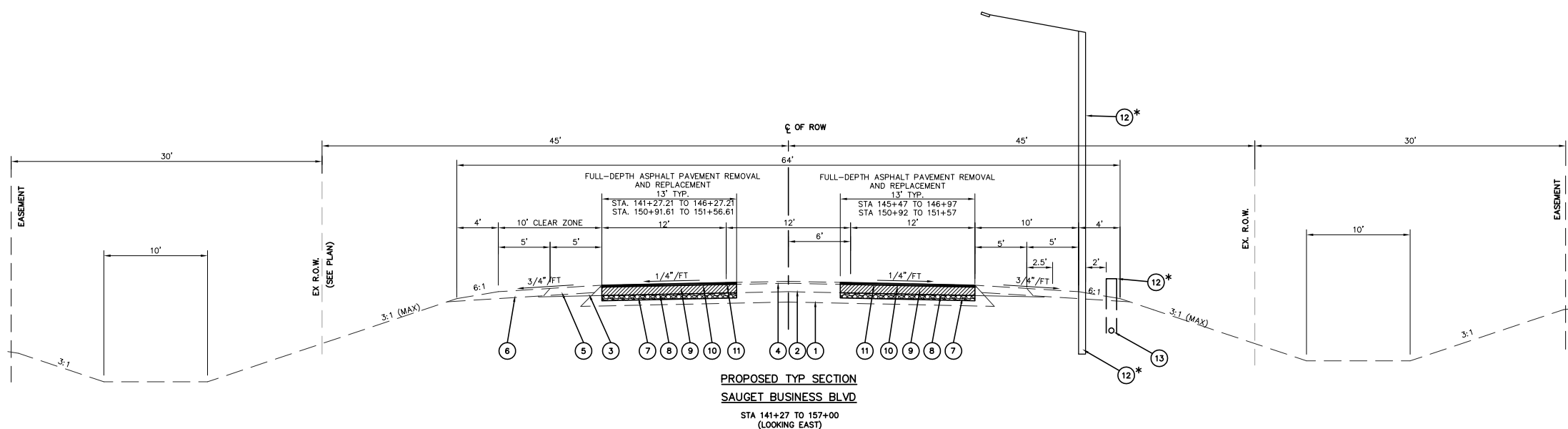
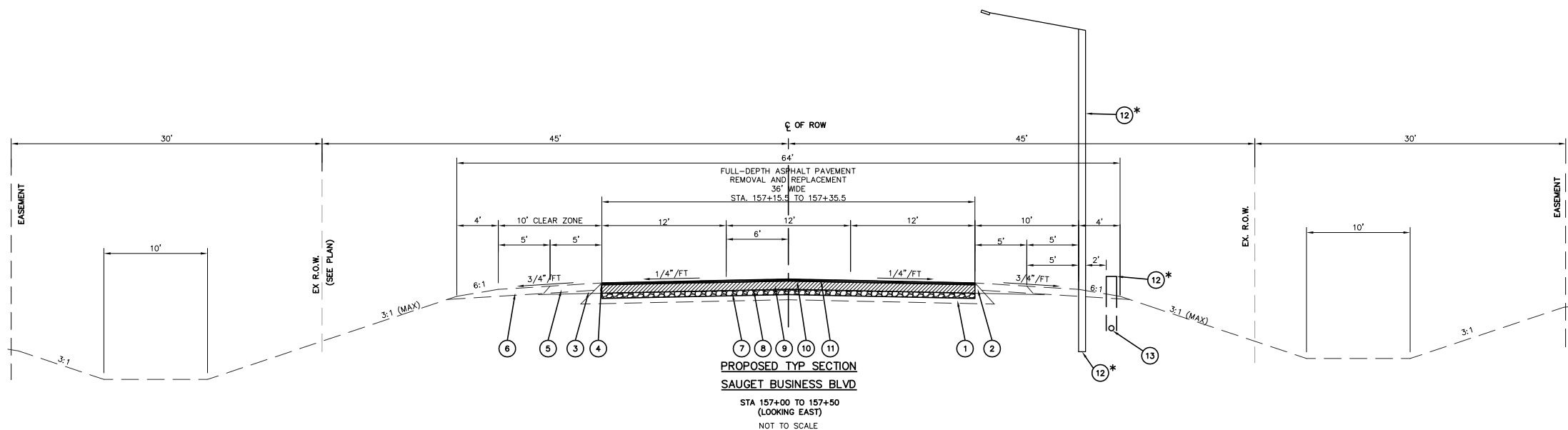
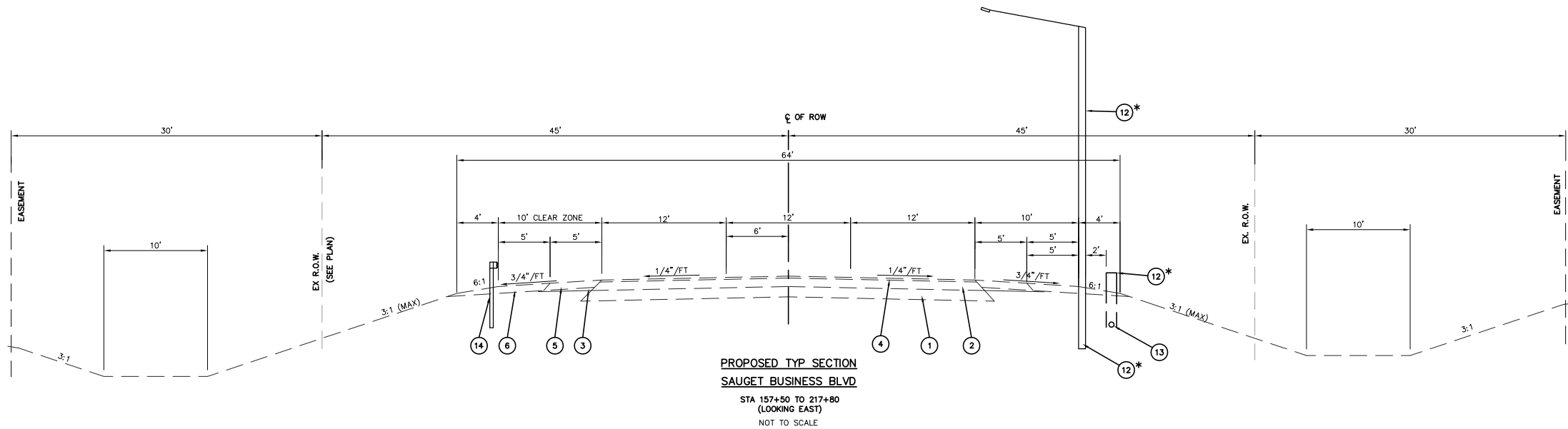
**PROPOSED TYP SECTION  
SAUGET BUSINESS BLVD**  
STA 106+09 TO 135+57  
(LOOKING EAST)  
NOT TO SCALE

**\* FOR INFORMATIONAL PURPOSE ONLY.**  
WORK PERFORMED BY OTHERS (AMEREN IL)

PROPOSED 35' TALL STREET LIGHT POLE & LUMINAIRE (5' EMBEDMENT, 30' MOUNTING HEIGHT) @ 250' SPACING. LUMINAIRE BY LEOTEK #GCL1-80J-MV-30K-3R-GY-220S (COMPLIES WITH AMEREN #31-51-645). AMEREN IL ELECTRIC TO INSTALL WIRING, HANDHOLES, FOOTINGS/FOUNDATIONS FOR EACH POLE, AND ANY APPURTENANCES NEEDED FOR PLACEMENT OF TRANSFORMERS, TRANSFORMERS, STREET LIGHTS (POLES & LUMINAIRES), AND WILL MAKE ALL FINAL CONNECTIONS.

- ① EXISTING LIME MODIFIED SOILS 12"
- ② EXISTING - HOT-MIX ASPHALT BASE COURSE 9.75"
- ③ EXISTING - SUBBASE GRANULAR MATERIAL, TYPE C
- ④ EXISTING - HOT-MIX ASPHALT CONCRETE SURFACE COURSE 2.25"
- ⑤ EXISTING - HOT-MIX ASPHALT SHOULDERS, 8"
- ⑥ EXISTING - AGGREGATE SHOULDERS, TYPE A 8"
- ⑦ PROPOSED - SUBBASE GRANULAR MATERIAL, TYPE A 6"
- ⑧ PROPOSED - BITUMINOUS MATERIALS (PRIME COAT)
- ⑨ PROPOSED - HOT-MIX ASPHALT BASE COURSE, 10"
- ⑩ PROPOSED - BITUMINOUS MATERIALS (TACK COAT)
- ⑪ PROPOSED - HOT-MIX ASPHALT SURFACE, IL9.5, MIX "D", N90, 2"
- ⑫ PROPOSED 35' TALL STREET LIGHT POLE & LUMINAIRE (5' EMBEDMENT, 30' MOUNTING HEIGHT) @ 250' SPACING. LUMINAIRE BY LEOTEK #GCL1-80J-MV-30K-3R-GY-220S (COMPLIES WITH AMEREN #31-51-645). CONTRACTOR TO INSTALL CONDUIT W/ PULL WIRES ONLY. AMEREN IL ELECTRIC TO INSTALL WIRING, HANDHOLES, FOOTINGS/FOUNDATIONS FOR EACH POLE, AND ANY APPURTENANCES NEEDED FOR PLACEMENT OF TRANSFORMERS, TRANSFORMERS, STREET LIGHTS (POLES & LUMINAIRES), AND WILL MAKE ALL FINAL CONNECTIONS.
- ⑬ PROPOSED 2" DIAMETER, SCHEDULE 40 PVC CONDUIT - INSTALLED BY CONTRACTOR (DIRECTIONAL BORING). WIRING INSTALLED & FINAL CONNECTIONS BY AMEREN ILLINOIS. (INCLUDING PEDESTAL)
- ⑭ PROPOSED GUARDRAIL (#630001 TYPE A) SEE PLAN FOR EXACT LOCATIONS

FILE NAME = T:\Clients\SAUGET\7313-18-4 STP SBB Safety\7313-18-4 FINAL TYPICAL SECTIONS.dwg	USER NAME = cro	DESIGNED - TPW	REVISED -	<b>STATE OF ILLINOIS DEPARTMENT OF TRANSPORTATION</b>	<b>VILLAGE OF SAUGET SAUGET BUSINESS BLVD. - SAFETY IMPROVEMENTS (TYPICAL SECTIONS)</b>			RTE. 9212	SECTION 18-00009-05-SP	COUNTY ST. CLAIR	TOTAL SHEETS 20	SHEET NO. 5
PLOT SCALE = N.T.S.		CHECKED - MJS	REVISED -		SCALE: N.T.S.	SHEET NO. 1 OF 2 SHEETS	STA. TO STA.	CONTRACT NO. 97780				
PLOT DATE = Apr 18, 2022 - 3:38PM		DATE - 4-18-2022	REVISED -					ILLINOIS FEDERAL AID PROJECT				



**\* FOR INFORMATIONAL PURPOSE ONLY.**  
 WORK PERFORMED BY OTHERS (AMEREN IL)

PROPOSED 35' TALL STREET LIGHT POLE & LUMINAIRE (5' EMBEDMENT, 30' MOUNTING HEIGHT) @ 250' SPACING. LUMINAIRE BY LEOTEK #GCL1-80J-MV-30K-3R-GY-220S (COMPLIES WITH AMEREN #31-51-645). AMEREN IL ELECTRIC TO INSTALL WIRING, HANDHOLES, FOOTINGS/FOUNDATIONS FOR EACH POLE, AND ANY APPURTENANCES NEEDED FOR PLACEMENT OF TRANSFORMERS, TRANSFORMERS, STREET LIGHTS (POLES & LUMINAIRES), AND WILL MAKE ALL FINAL CONNECTIONS.

- ① EXISTING LIME MODIFIED SOILS 12"
- ② EXISTING - HOT-MIX ASPHALT BASE COURSE 9.75"
- ③ EXISTING - SUBBASE GRANULAR MATERIAL, TYPE C
- ④ EXISTING - HOT-MIX ASPHALT CONCRETE SURFACE COURSE 2.25"
- ⑤ EXISTING - HOT-MIX ASPHALT SHOULDERS, 8"
- ⑥ EXISTING - AGGREGATE SHOULDERS, TYPE A 8"
- ⑦ PROPOSED - SUBBASE GRANULAR MATERIAL, TYPE A 6"
- ⑧ PROPOSED - BITUMINOUS MATERIALS (PRIME COAT)
- ⑨ PROPOSED - HOT-MIX ASPHALT BASE COURSE, 10"
- ⑩ PROPOSED - BITUMINOUS MATERIALS (TACK COAT)
- ⑪ PROPOSED - HOT-MIX ASPHALT SURFACE, IL9.5, MIX "D", N90, 2"
- ⑫ PROPOSED 35' TALL STREET LIGHT POLE & LUMINAIRE (5' EMBEDMENT, 30' MOUNTING HEIGHT) @ 250' SPACING. LUMINAIRE BY LEOTEK #GCL1-80J-MV-30K-3R-GY-220S (COMPLIES WITH AMEREN #31-51-645). CONTRACTOR TO INSTALL CONDUIT W/ PULL WIRES ONLY. AMEREN IL ELECTRIC TO INSTALL WIRING, HANDHOLES, FOOTINGS/FOUNDATIONS FOR EACH POLE, AND ANY APPURTENANCES NEEDED FOR PLACEMENT OF TRANSFORMERS, TRANSFORMERS, STREET LIGHTS (POLES & LUMINAIRES), AND WILL MAKE ALL FINAL CONNECTIONS.
- ⑬ PROPOSED 2" DIAMETER, SCHEDULE 40 PVC CONDUIT - INSTALLED BY CONTRACTOR (DIRECTIONAL BORING). WIRING INSTALLED & FINAL CONNECTIONS BY AMEREN ILLINOIS. (INCLUDING PEDESTAL)
- ⑭ PROPOSED GUARDRAIL (#630001 TYPE A) SEE PLAN FOR EXACT LOCATIONS

FILE NAME =	USER NAME = cro	DESIGNED - TPW	REVISED -	<b>STATE OF ILLINOIS DEPARTMENT OF TRANSPORTATION</b>	VILLAGE OF SAUGET SAUGET BUSINESS BLVD. - SAFETY IMPROVEMENTS (TYPICAL SECTIONS)		RTE.	SECTION	COUNTY	TOTAL SHEETS	SHEET NO.		
T:\Clients\SAUGET\7313-18-4 STP SBB Safety	Impr Ph 1 Grant App\CIVIL DWG\FINAL\	DRAWN - CRO	REVISED -		SCALE: N.T.S.	SHEET NO. 2 OF 2 SHEETS	STA.	TO STA.	9212	18-00009-05-SP	ST. CLAIR	20	6
7313-18-4 FINAL TYPICAL SECTIONS.dwg	PLOT SCALE = N.T.S.	CHECKED - MJS	REVISED -								CONTRACT NO. 97780		
	PLOT DATE = Apr 19, 2022 - 4:03PM	DATE - 4-18-2022	REVISED -		ILLINOIS FEDERAL AID PROJECT								

PAVEMENT SCHEDULE										
STATION	STATION	SUBBASE GRANULAR MATERIAL, TYPE A	HOT-MIX ASPHALT BASE COURSE, 10"	BITUMINOUS MATERIALS (PRIME COAT)	BITUMINOUS MATERIALS (TACK COAT)	HOT-MIX ASPHALT SURFACE COURSE, IL-9.5, MIX "D", N70	INCIDENTAL HOT-MIX ASPHALT SURFACING	MIXTURE FOR CRACKS, JOINTS, AND FLANGEWAYS	PAVEMENT REMOVAL	SAW CUTS
		CU YD	SQ YD	POUND	POUND	TON	TON	TON	SQ YD	FOOT
<b>SAUGET BUSINESS BLVD.</b>										
105+50.00	122+00.00	34.58	207.45	466.76	93.35	23.23	1.00	1.00	207.5	280.00
122+00.00	140+00.00	72.22	433.33	975.00	195.00	48.53	1.00	1.00	433.33	626.00
140+00.00	158+00.00	193.89	1163.33	2617.50	523.50	130.29	1.00	1.00	1163.33	1724.00
158+00.00	194+00.00									
194+00.00	211+50.00									
211+50.00	217+80.00									
<b>TOTAL</b>		300.69	1804.12	4059.26	811.85	202.06	3.00	3.00	1804.12	2630.00

LIGHTING & CONDUIT					
STATION	TO	STATION	SIDE	UNDERGROUND CONDUIT, PVC, 2" DIA.	DIRECTIONAL BORING
				FOOT	FOOT
106+09.00		108+32.59	RT.	223.59	223.59
108+32.59		110+92.14	RT.	259.55	259.55
116+40.00		118+72.45	RT.	232.45	232.45
118+72.45		121+36.88	RT.	264.43	264.43
121+36.88		123+96.83	RT.	259.95	259.95
123+96.83		126+64.01	RT.	267.18	267.18
126+64.01		129+22.19	RT.	258.18	258.18
129+22.19		131+86.54	RT.	264.35	264.35
131+86.54		134+45.88	RT.	259.34	259.34
134+45.88		137+05.03	RT.	260.15	260.15
137+06.03		139+66.45	RT.	260.42	260.42
139+66.45		142+25.84	RT.	259.39	259.39
142+25.84		144+73.63	RT.	247.79	247.79
144+73.63		147+21.42	RT.	247.79	247.79
147+21.42		148+91.95	RT.	170.53	170.53
148+91.95		149+72.06	RT.	80.11	80.11
149+72.06		152+17.01	RT.	244.95	244.95
152+17.01		154+59.93	RT.	242.92	242.92
154+59.93		157+10.01	RT.	250.08	250.08
157+10.01		159+55.18	RT.	245.17	245.17
159+55.18		161+77.84	RT.	222.66	222.66
161+77.84		163+81.05	RT.	203.21	203.21
163+81.05		166+21.39	RT.	240.34	240.34
166+21.39		168+93.47	RT.	272.08	272.08
168+93.47		171+45.91	RT.	252.44	252.44
171+45.91		173+83.15	RT.	242.24	242.24
173+83.15		176+41.52	RT.	253.37	253.37
176+41.52		178+89.32	RT.	247.80	247.80
178+89.32		181+33.82	RT.	244.50	244.50
181+33.82		183+81.63	RT.	247.81	247.81
183+81.63		186+26.13	RT.	244.50	244.50
186+26.13		188+74.03	RT.	247.90	247.90
188+74.03		190+65.71	RT.	191.68	191.68
192+10.16		194+22.68	RT.	212.52	212.52
194+22.68		196+40.89	RT.	218.21	218.21
196+40.89		199+12.45	RT.	271.56	271.56
199+12.45		201+70.78	RT.	258.33	258.33
201+70.78		204+35.26	RT.	264.48	264.48
204+35.26		206+99.31	RT.	264.05	264.05
206+99.31		206+99.31	LT.	485.00	485.00
206+99.31		210+08.93	RT.	309.62	309.62
210+08.93		212+60.83	RT.	251.90	251.90
<b>TOTAL</b>				10445	10445

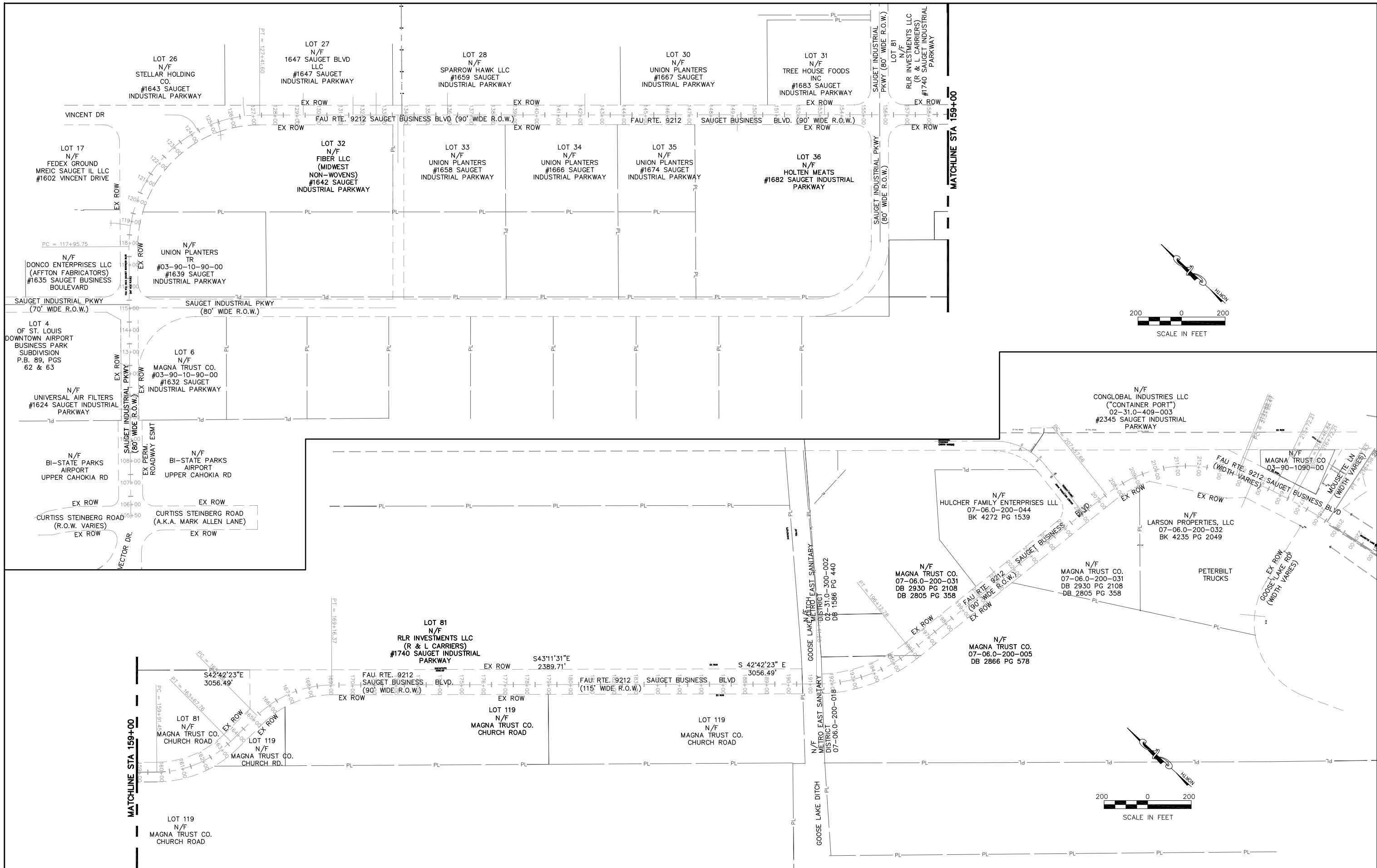
GUARDRAIL & END TERMINAL							
STATION	TO	STATION	SIDE	STEEL BEAM GUARDRAIL, TYPE A, 6 FOOT POSTS	TRAFFIC BARRIER TERMINAL, TYPE 1 (SPECIAL) TANGENT	TERMINAL MARKER - DIRECT APPLIED	GUARDRAIL REFLECTORS, TYPE A
				FOOT	EACH	EACH	EACH
166+00.00		169+50.00	RT.	300	2	2	8
<b>TOTAL</b>				300	2	2	8

SIGN PANEL - TYPE 1			
TRAFFIC CONTROL DEVICES SCHEDULE			
STATION	OFFSET		CHEVRON WARNING SIGN (W1-8L) (18"X24")
		SQ FT	3.00
<b>SAUGET BUSINESS BLVD.</b>			
120+00.00	28' LT.		1
121+50.00	28' LT.		1
123+00.00	28' LT.		1
127+50.00	28' LT.		1
128+50.00	28' LT.		1
<b>TOTAL SIGNS</b>			<b>5</b>
<b>SIGNS (SQ FT)</b>			<b>15</b>
<b>METAL POST - TYPE A</b>			<b>55 (FOOT)</b>
	<b>SIGN PANEL - TYPE 1</b>		<b>15 SQ FT</b>
	<b>BARRICADE W/ TYPE A WARNING LIGHTS</b>		<b>1 EACH</b>

PAVEMENT MARKINGS SCHEDULE										
		THERMOPLASTIC PAVEMENT MARKING LINE					THERMOPLASTIC PAVEMENT MARKING LINE 4"			
		THERMOPLASTIC PAVEMENT MARKING - LINE 8"	THERMOPLASTIC PAVEMENT MARKING LINE 12"	THERMOPLASTIC PAVEMENT MARKING CHEVRON LINE 12"	THERMOPLASTIC PAVEMENT MARKING - LINE 24"	THERMOPLASTIC PAVEMENT MARKING - LETTERS AND SYMBOLS	LINE 4"	LINE 4"	4" SKIP DASH LINE	4" SKIP DASH LINE
		WHITE	WHITE	WHITE	WHITE	WHITE	YELLOW	WHITE	YELLOW	WHITE
STATION	STATION	FOOT	FOOT	FOOT	FOOT	SQ FT	FOOT	FOOT	FOOT	FOOT
<b>SAUGET BUSINESS BLVD.</b>										
105+50.00	122+00.00			105	79	240	3,206	3,135	929	
122+00.00	140+00.00					240	3,600	3,490	2,226	
140+00.00	158+00.00				35	240	3,042	3,600	3,600	
158+00.00	194+00.00									
194+00.00	211+50.00									
211+50.00	217+80.00									
<b>TOTAL</b>		<b>0</b>	<b>0</b>	<b>105</b>	<b>114</b>	<b>720</b>	<b>9,848</b>	<b>10,225</b>	<b>6,755</b>	<b>0</b>
		<b>12" TOTAL</b>	<b>105</b>			<b>4" TOTAL</b>	<b>26829</b>			

FILE NAME = T:\Clients\SAUGET\7313-18-4 STP SBB Safety 7313-18-4_SUMMARY OF QUANTITIES.dwg	USER NAME = cro	DESIGNED - TPW	REVISED -	<b>STATE OF ILLINOIS DEPARTMENT OF TRANSPORTATION</b>	VILLAGE OF SAUGET SAUGET BUSINESS BLVD. - SAFETY IMPROVEMENTS (SCHEDULE OF QUANTITIES)	RTE.	SECTION	COUNTY	TOTAL SHEETS	SHEET NO.	
	Impr Ph 1 Grant App\CIVIL DWG\FINAL\	DRAWN - CRO	REVISED -			9212	18-00009-05-SP	ST. CLAIR	20	8	
	PLOT SCALE = N/A	CHECKED - MJS	REVISED -			CONTRACT NO. 97780					
	PLOT DATE = Apr 18, 2022 - 4:05PM	DATE - 4-18-2022	REVISED -			SCALE: N/A	SHEET NO. 2 OF 2 SHEETS	STA.	TO STA.	ILLINOIS FEDERAL AID PROJECT	





FILE NAME = T:\Clients\SAUGET\7313-18-4 STP SBB Safety\7313-18-4 FINAL PLAN 4-13-2022.dwg

USER NAME = cro  
 Impr Ph 1 Grant App\CIVIL DWG\FINAL\  
 PLOT SCALE = 1"=60'  
 PLOT DATE = Apr 18, 2022 - 4:11PM

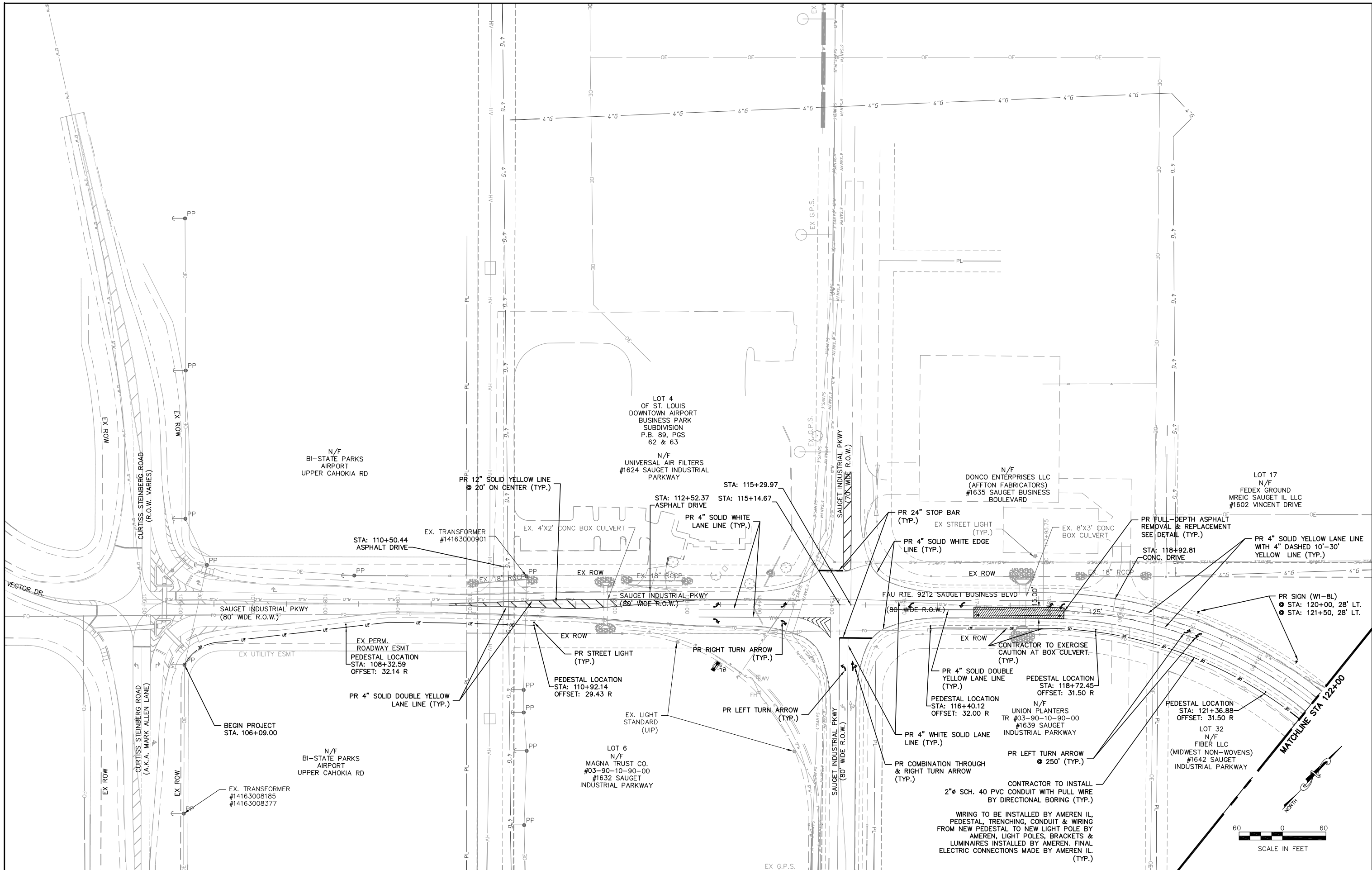
DESIGNED - TPW  
 DRAWN - CRO  
 CHECKED - MJS  
 DATE - 4-18-2022

REVISED -  
 REVISED -  
 REVISED -  
 REVISED -

**STATE OF ILLINOIS  
 DEPARTMENT OF TRANSPORTATION**

VILLAGE OF SAUGET  
 SAUGET BUSINESS BLVD. - SAFETY IMPROVEMENTS (HORIZONTAL CONTROL PLAN)  
 SCALE: 1"=60' SHEET NO. 1 OF 7 SHEETS STA. 105+50 TO STA. 218+00

RT.	SECTION	COUNTY	TOTAL SHEETS	SHEET NO.
9212	18-00009-05-SP	ST. CLAIR	20	9
CONTRACT NO. 97780				
ILLINOIS FEDERAL AID PROJECT				



FILE NAME = T:\Clients\SAUGET\7313-18-4 STP SBB Safety Impr Ph 1 Grant App\CIVIL DWG\FINAL\7313-18-4 FINAL PLAN 4-13-2022.dwg

USER NAME = cro  
 PLOT SCALE = 1"=60'  
 PLOT DATE = Apr 18, 2022 - 4:01PM

DESIGNED - TPW  
 DRAWN - CRO  
 CHECKED - MJS  
 DATE - 4-18-2022

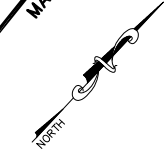
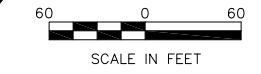
REVISED -  
 REVISED -  
 REVISED -  
 REVISED -

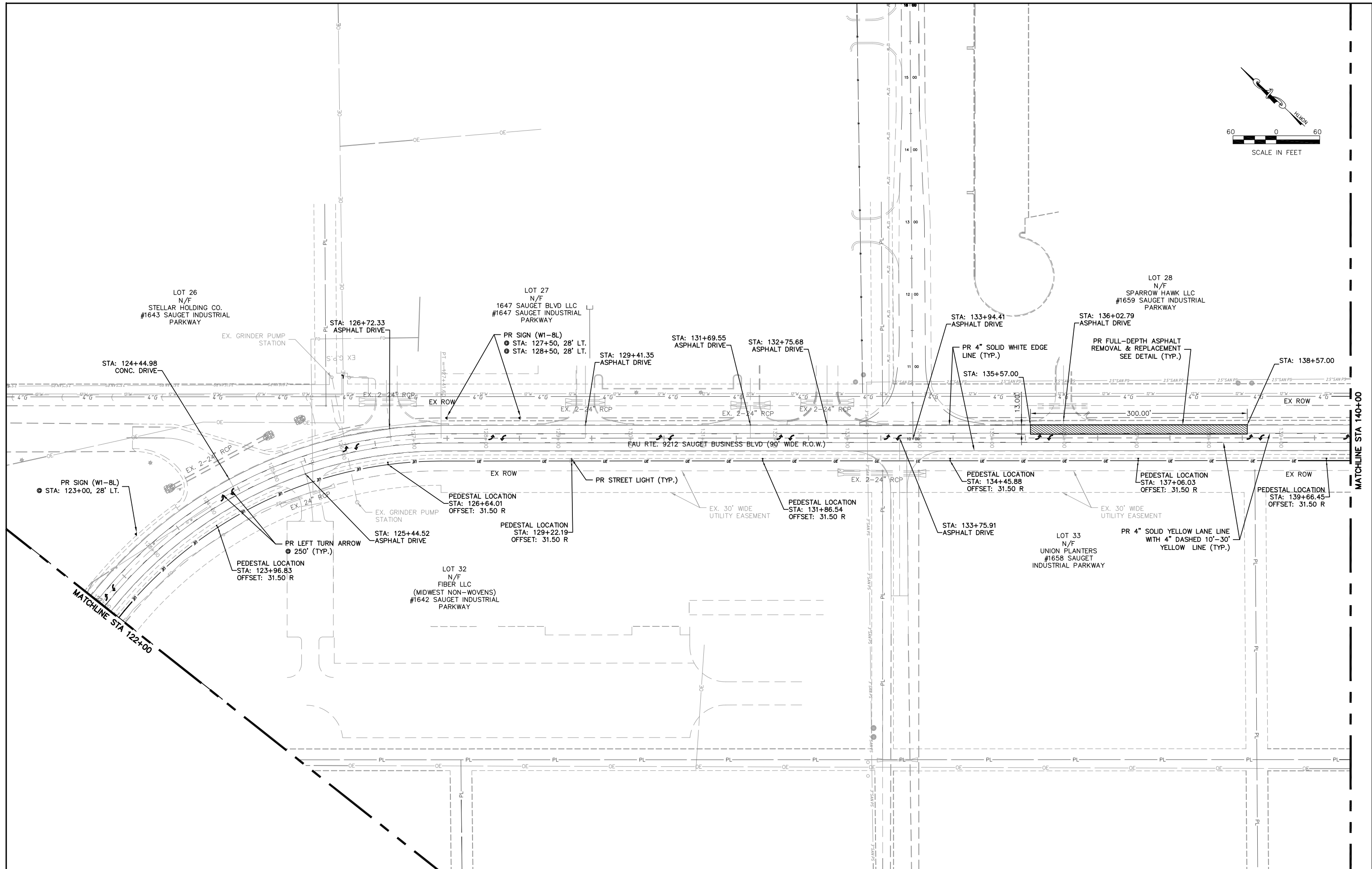
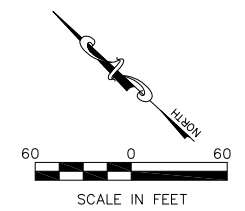
**STATE OF ILLINOIS  
 DEPARTMENT OF TRANSPORTATION**

VILLAGE OF SAUGET  
 SAUGAT BUSINESS BLVD. - SAFETY IMPROVEMENTS (PLAN SHEET)

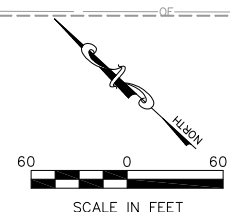
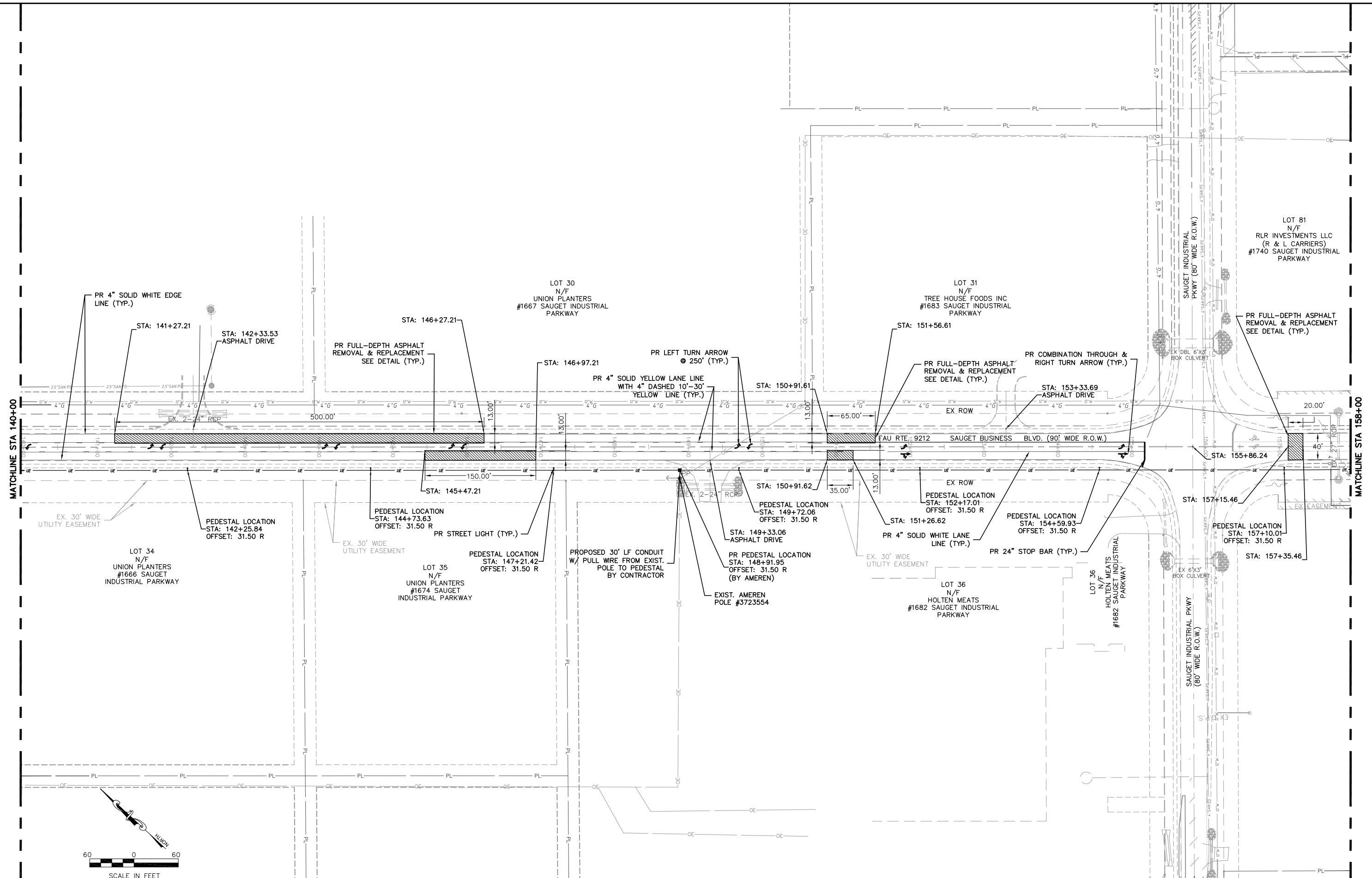
SCALE: 1"=60'    SHEET NO. 1 OF 7 SHEETS    STA. 105+50 TO STA. 122+00

RTE.	SECTION	COUNTY	TOTAL SHEETS	SHEET NO.
9212	18-00009-05-SP	ST. CLAIR	20	10
CONTRACT NO. 97780				
ILLINOIS FEDERAL AID PROJECT				

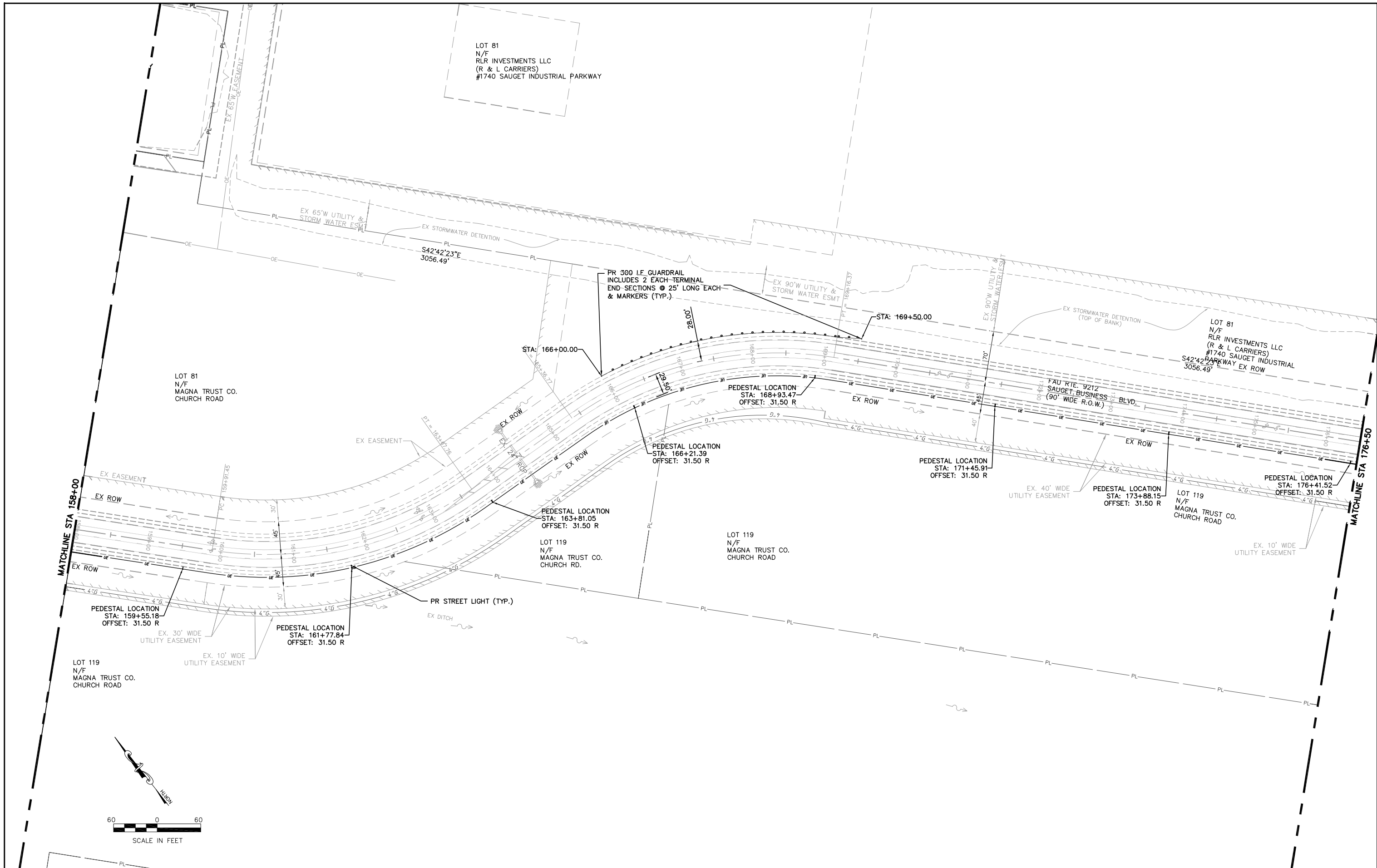




FILE NAME = T:\Clients\SAUGET\7313-18-4 STP SBB Safety Impr Ph 1 Grant App\CIVIL DWG\FINAL\7313-18-4 FINAL PLAN 4-13-2022.dwg USER NAME = cro DESIGNED - TPW DRAWN - CRO CHECKED - MJS PLOT DATE = Apr 18, 2022 - 3:43PM	REVISIONS REVISED - REVISED - REVISED - REVISED -	<b>STATE OF ILLINOIS</b> <b>DEPARTMENT OF TRANSPORTATION</b>	VILLAGE OF SAUGET SAUGET BUSINESS BLVD. - SAFETY IMPROVEMENTS (PLAN SHEET)		R.T.E. 9212	SECTION 18-00009-05-SP	COUNTY ST. CLAIR	TOTAL SHEETS 20	SHEET NO. 11
			SCALE: 1"=60'	SHEET NO. 2 OF 7 SHEETS	STA. 122+00 TO STA. 140+00	CONTRACT NO. 97780 ILLINOIS FEDERAL AID PROJECT			



FILE NAME = T:\clients\SAUGET\7313-18-4 STP SBB Safety Impr Ph 1 Grant App\CIVIL DWG\FINAL\7313-18-4 FINAL PLAN 4-13-2022.dwg	USER NAME = cro	DESIGNED - TPW	REVISED -	<b>STATE OF ILLINOIS DEPARTMENT OF TRANSPORTATION</b>	VILLAGE OF SAUGET SAUGET BUSINESS BLVD. - SAFETY IMPROVEMENTS (PLAN SHEET)			RT. 9212	SECTION 18-00009-05-SP	COUNTY ST. CLAIR	TOTAL SHEETS 20	SHEET NO. 12	
PLOT SCALE = 1"=60'		CHECKED - MJS	REVISED -		SCALE: 1"=60	SHEET NO. 3 OF 7 SHEETS	STA. 140+00 TO STA. 158+00	CONTRACT NO. 97780		ILLINOIS FEDERAL AID PROJECT			
PLOT DATE = Apr 18, 2022 - 3:44PM		DATE - 4-18-2022	REVISED -										



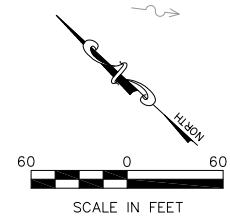
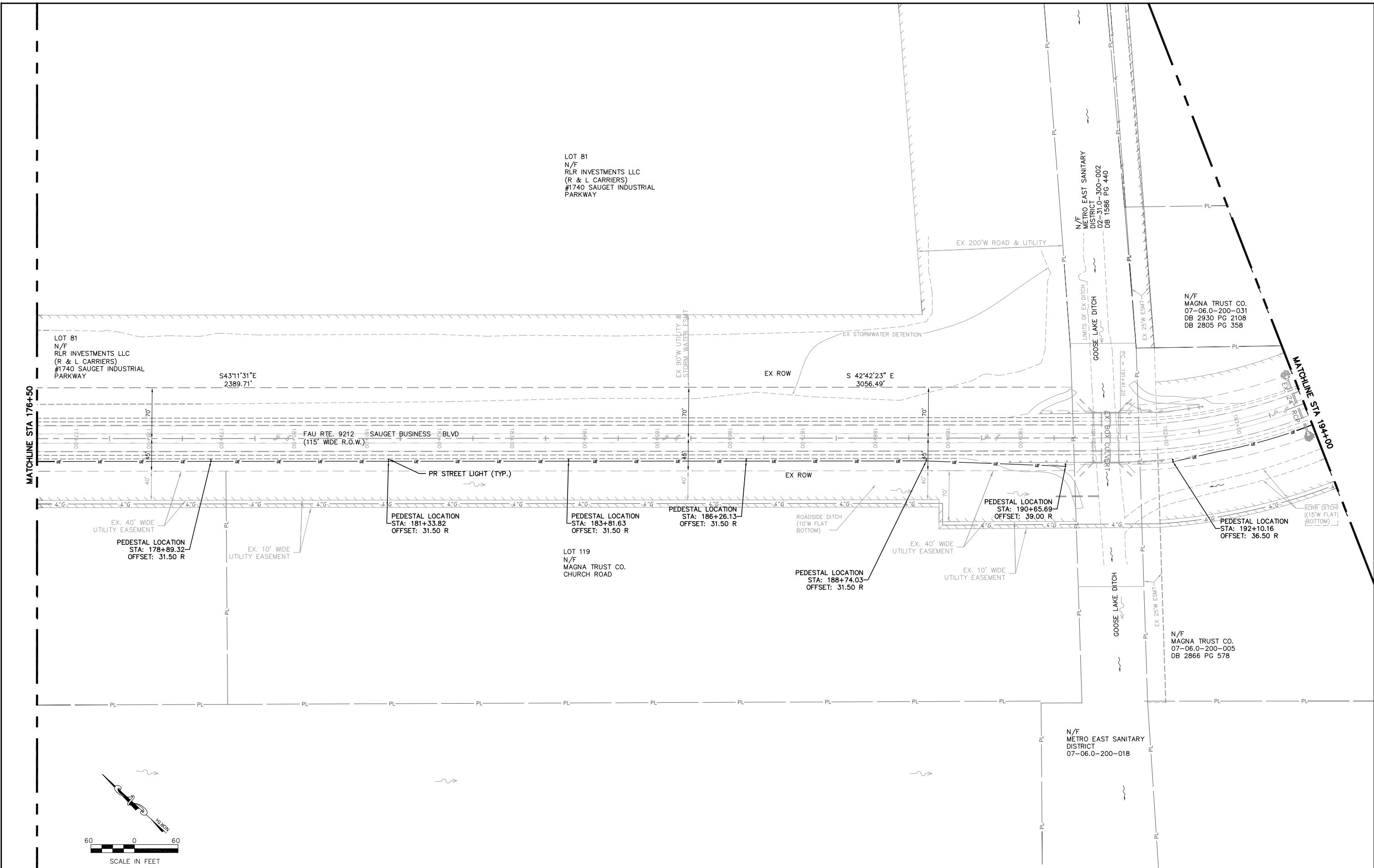
FILE NAME = T:\Clients\SAUGET\7313-18-4 STP SBB Safety Impr Ph 1 Grant App\CIVIL DWG\FINAL\7313-18-4 FINAL PLAN 4-18-2022.dwg	USER NAME = cro	DESIGNED - TPW	REVISED -
PLOT SCALE = 1"=60'	CHECKED - MJS	DRAWN - CRO	REVISED -
PLOT DATE = Apr 19, 2022 - 4:07PM	DATE - 4-18-2022		REVISED -

**STATE OF ILLINOIS  
DEPARTMENT OF TRANSPORTATION**

VILLAGE OF SAUGET  
SAUGAT BUSINESS BLVD. - SAFETY IMPROVEMENTS (PLAN SHEET)

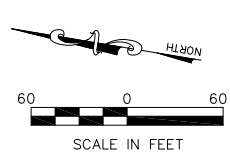
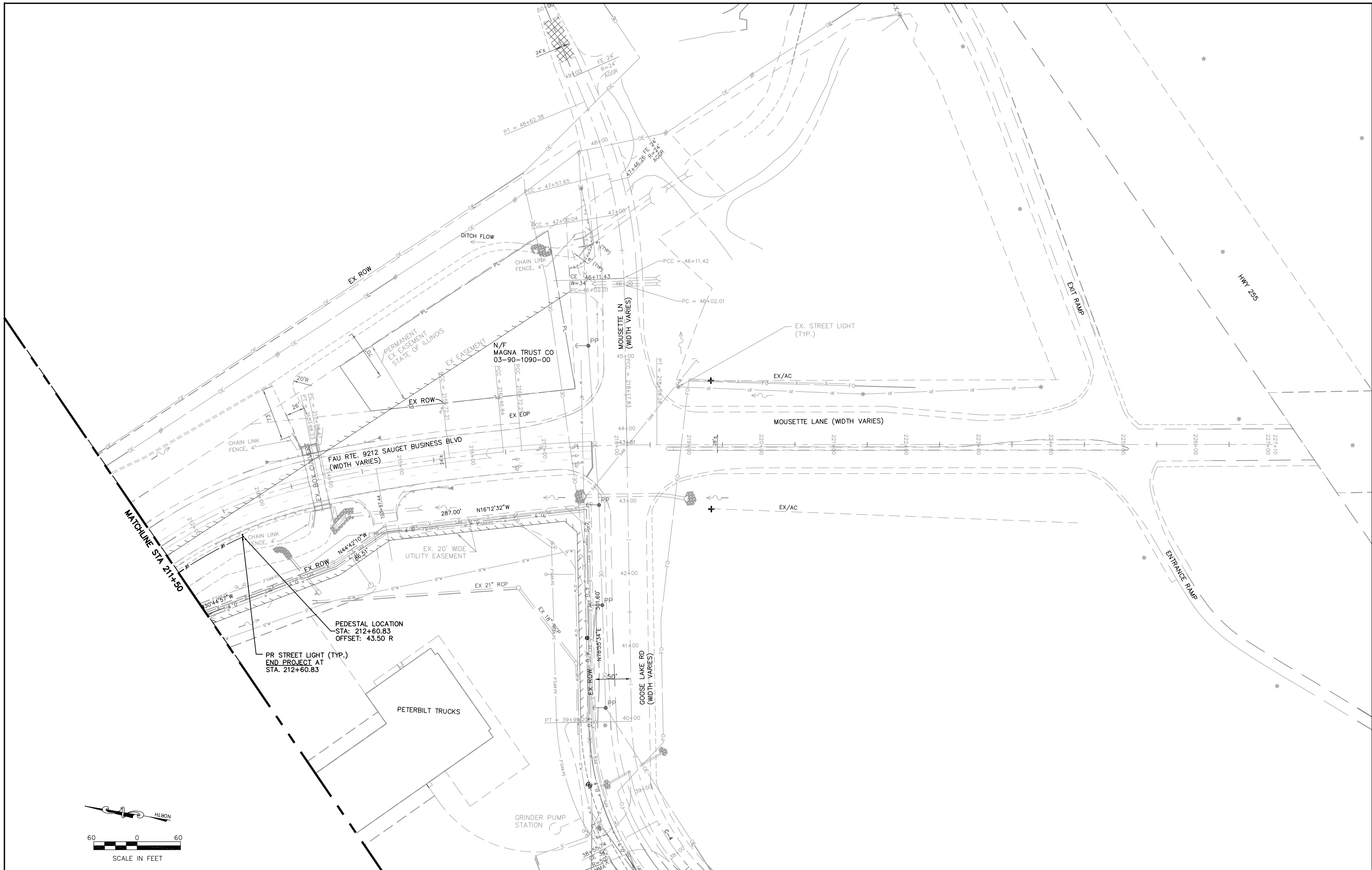
SCALE: 1"=60      SHEET NO. 4 OF 7 SHEETS      STA. 158+00 TO STA. 176+50

RT. 9212	SECTION 18-00009-05-SP	COUNTY ST. CLAIR	TOTAL SHEETS 20	SHEET NO. 13
CONTRACT NO. 97780			ILLINOIS FEDERAL AID PROJECT	



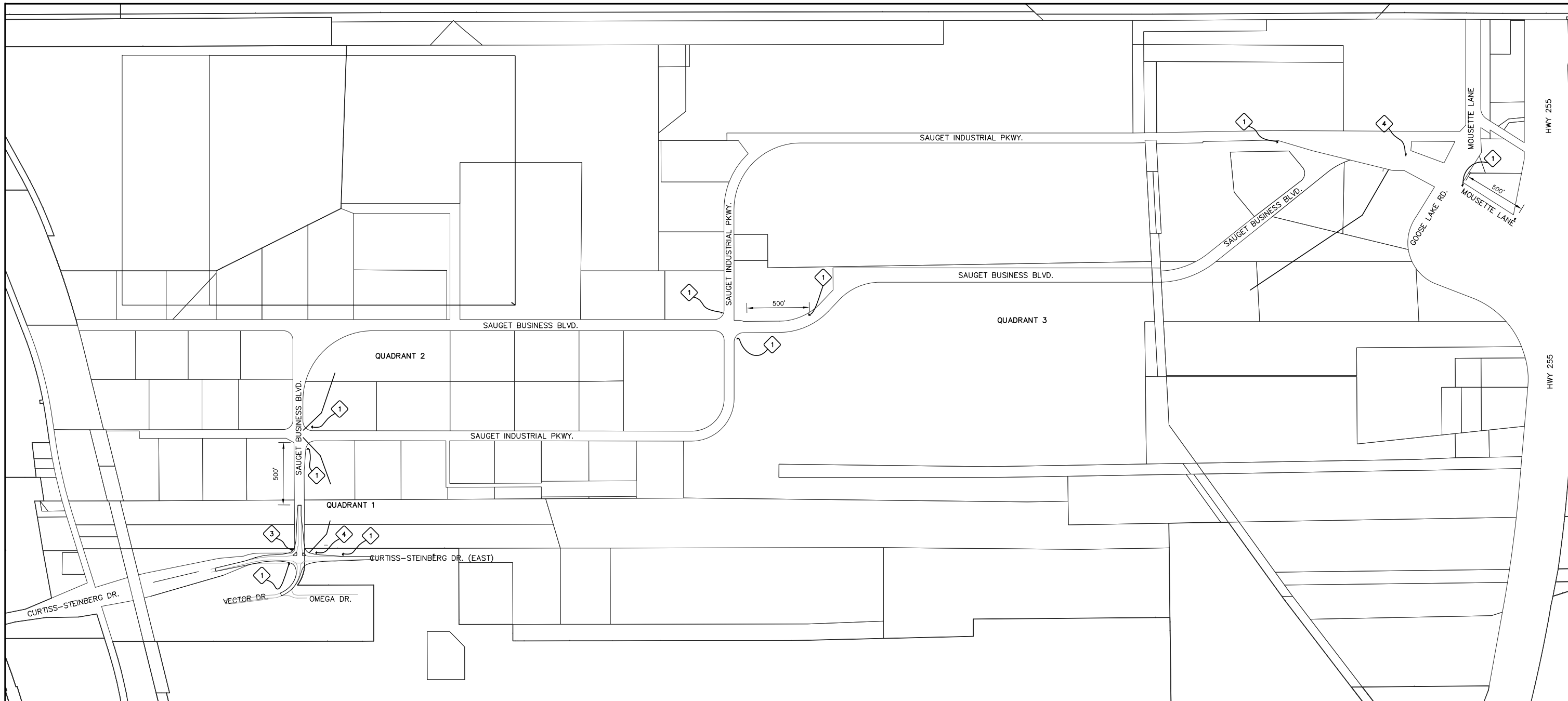
FILE NAME = T:\Clients\SAUGET\7313-18-4 STP SBB Safety Impr Ph 1 Grant App\CIVIL DWG\FINAL\7313-18-4 FINAL PLAN 4-13-2022.dwg USER NAME = cro PLOT SCALE = 1"=60' PLOT DATE = Apr 18, 2022 - 3:47PM	DESIGNED - TPW DRAWN - CRO CHECKED - MJS DATE - 4-18-2022	REVISED - REVISED - REVISED - REVISED -	<b>STATE OF ILLINOIS</b> <b>DEPARTMENT OF TRANSPORTATION</b>	<b>VILLAGE OF SAUGET</b> <b>SAUGET BUSINESS BLVD. - SAFETY IMPROVEMENTS (PLAN SHEET)</b>		R.T.E. 9212 SECTION 18-00009-05-SP COUNTY ST. CLAIR CONTRACT NO. 97780	TOTAL SHEETS 20 SHEET NO. 14
	SCALE: 1"=60'    SHEET NO. 5 OF 7 SHEETS    STA. 176+50 TO STA. 194+00			ILLINOIS FEDERAL AID PROJECT			





FILE NAME = T:\Clients\SAUGET\7313-18-4 STP SBB Safety Impr Ph 1 Grant App\CIVIL DWG\FINAL\7313-18-4 FINAL PLAN 4-13-2022.dwg		USER NAME = cro		DESIGNED - TPW		REVISED -		<b>STATE OF ILLINOIS DEPARTMENT OF TRANSPORTATION</b>		VILLAGE OF SAUGET SAUGET BUSINESS BLVD. - SAFETY IMPROVEMENTS (PLAN SHEET)		ROUTE	SECTION	COUNTY	TOTAL SHEETS	SHEET NO.
DRAWN - CRO		CHECKED - MJS		REVISED -		9212	18-00009-05-SP			ST. CLAIR	20	16				
PLOT SCALE = 1"=60'		DATE - 4-18-2022		REVISED -		CONTRACT NO. 97780				SCALE: 1"=60'		SHEET NO. 7 OF 7 SHEETS		STA. 211+50 TO STA. 225+00		
PLOT DATE = Apr 18, 2022 - 3:49PM		DATE - 4-18-2022		REVISED -		ILLINOIS FEDERAL AID PROJECT										





**PHASING NOTES:**

1. TWO WAY TRAFFIC TO BE MAINTAINED DURING CONSTRUCTION.
2. TO REDUCE THE ENCROACHMENT OF WORK WITHIN THE TRAVELED WAY, THE ENGINEER RECOMMENDS COMPLETING SHOULDER AND TURNING LANE WORK FOR ONE QUADRANT, BEFORE BEGINNING WORK IN THE PROPOSED TURNING LANE OF AN ADJACENT QUADRANT.
3. TEMPORARY STRIPING TO BE INSTALLED AS REQUIRED BY THE ILMUTCD & IDOT STANDARDS.
4. TYPE III BARRICADES AND CHANNELIZERS TO BE RELOCATED AND REUSED FOR EACH QUADRANT/CORNER OF THE INTERSECTION, AS NECESSARY.

**RECOMMENDED PHASING PER QUADRANT:**

**-PHASE 1**

1. INSTALL WARNING SIGNS FOR CONSTRUCTION AND CHANGEABLE MESSAGE BOARDS 1 WEEK PRIOR TO MOBILIZATION.
2. INSTALL ELECTRICAL CONDUIT AND PEDESTALS.
3. CONTRACTOR TO COORDINATE WITH OTHERS FOR UTILITIES TO BE RELOCATED.

**-PHASE 2**

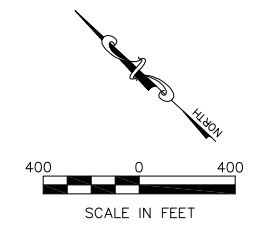
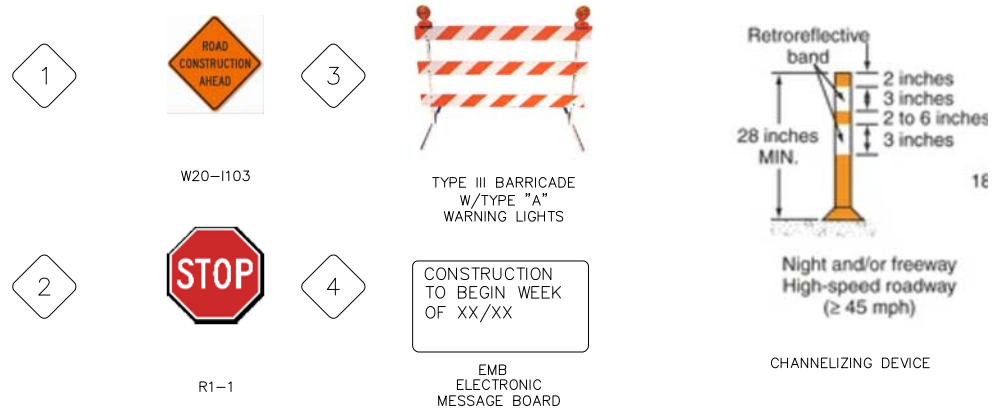
1. CONSTRUCT PROPOSED PAVEMENT REPAIRS.
2. REMOVE EX. PAVEMENT
3. CONSTRUCT PROPOSED PAVEMENT BASE COURSE.
4. APPLY TEMPORARY PAVEMENT MARKINGS.

**-PHASE 3**

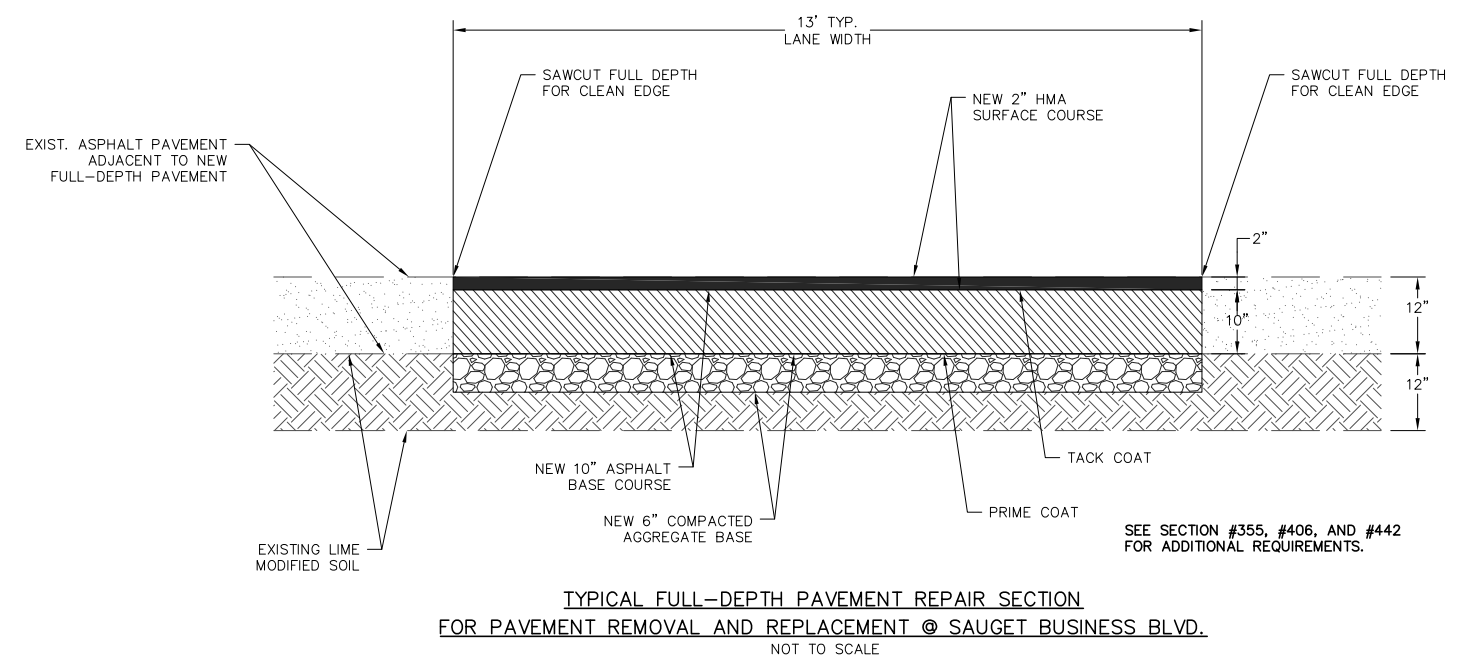
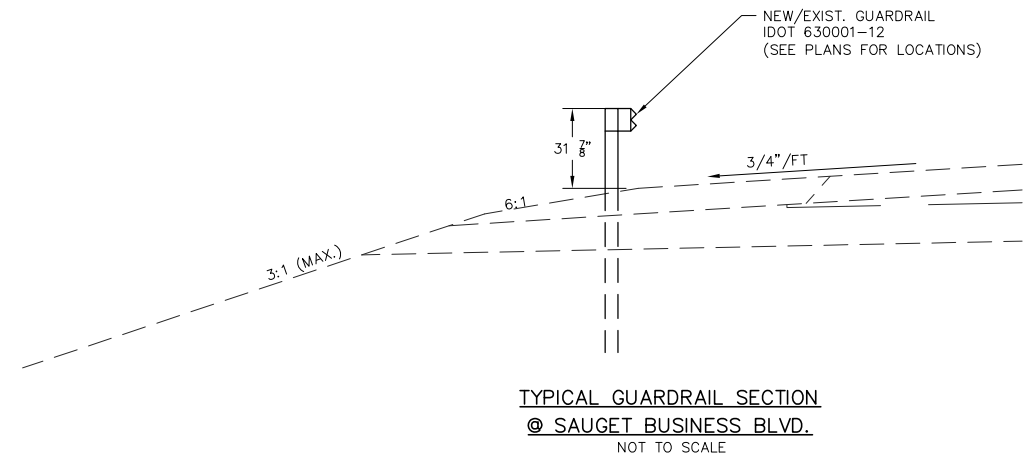
1. LAY HMA SURFACE COURSE MATERIAL.
2. INSTALL PERMANENT SIGNS AND FINAL PAVEMENT MARKINGS.
3. FINISH FINAL GRADING AND SEED AND MULCH APPLICATION TO BE INSTALLED AT THE EARLIEST OPPORTUNITY TO AVOID RAINFALL INDUCED EROSION.

**NOTES:**

1. STANDARD 701901-08 SHALL BE USED FOR ALL TRAFFIC MANAGEMENT.



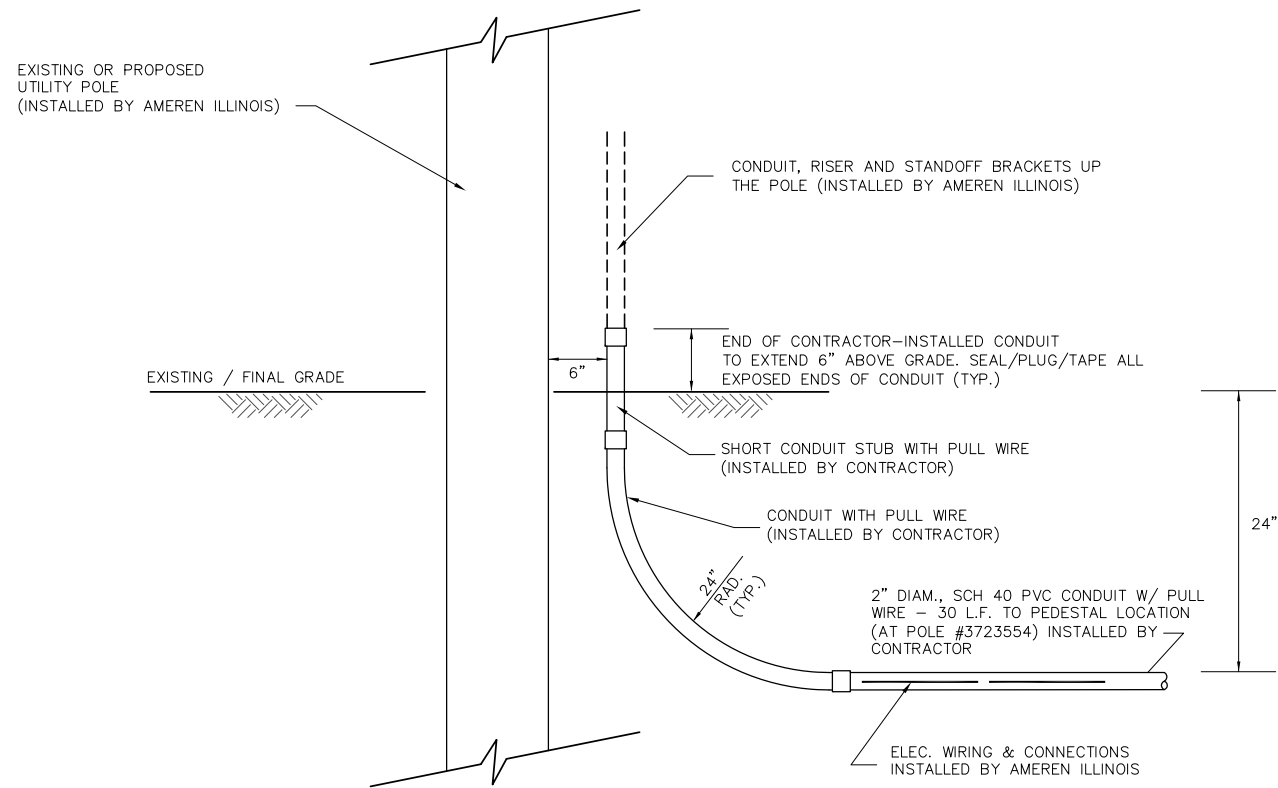
FILE NAME = T:\Clients\SAUGET\7313-18-4 STP SBB Safety 7313-18-4 FINAL TCP & STAGING PLAN.dwg	USER NAME = cro	DESIGNED - MJS	REVISED -	<b>STATE OF ILLINOIS DEPARTMENT OF TRANSPORTATION</b>	VILLAGE OF SAUGET SAUGET BUSINESS BLVD. - SAFETY IMPROVEMENTS (TRAFFIC CONTROL PLAN)			RTE.	SECTION	COUNTY	TOTAL SHEETS	SHEET NO.
	Impr Ph 1 Grant App\CIVIL DWG\FINAL\	DRAWN - CRO	REVISED -		9121	18-00009-05-SP	ST. CLAIR	20	17			
	PLOT SCALE = 1" = 400'	CHECKED - TPW	REVISED -		SCALE: 1"=400'			SHEET NO. 1 OF 1 SHEETS	STA.	TO STA.	CONTRACT NO. 97780	
	PLOT DATE = Mar 24, 2022 - 9:52AM	DATE - 3-24-2022	REVISED -							ILLINOIS		



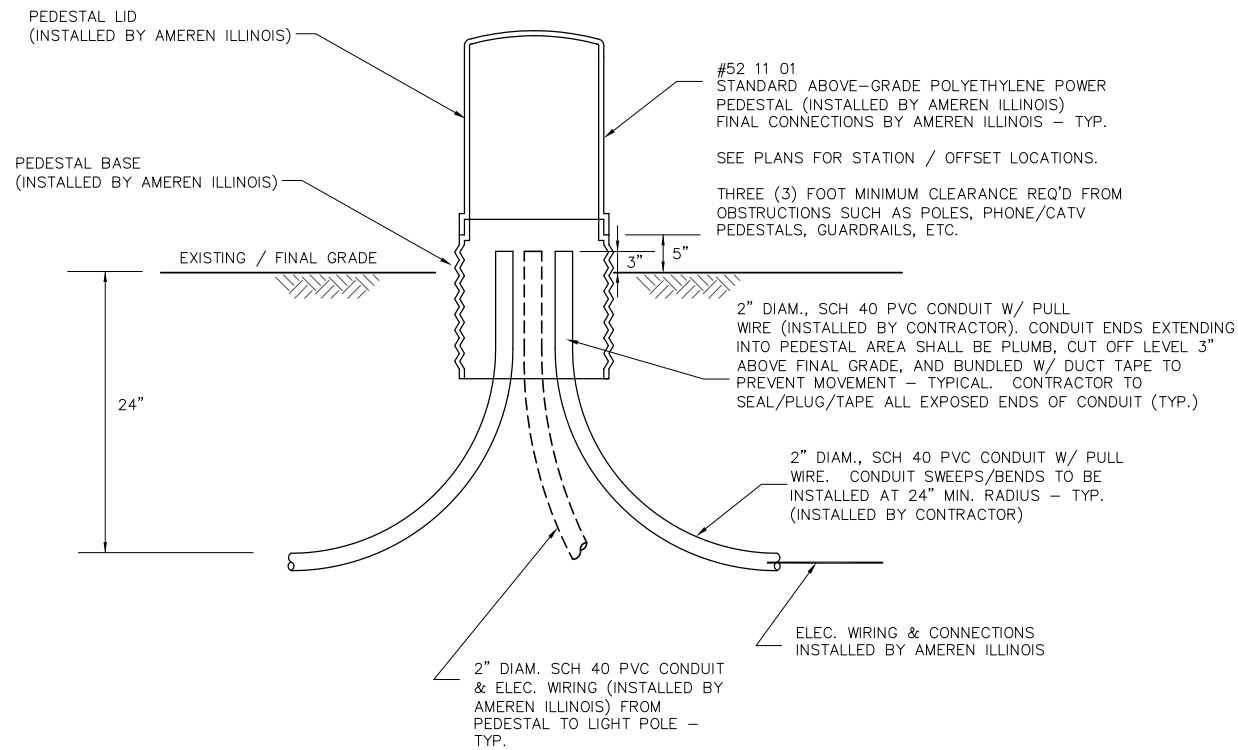
FILE NAME =	USER NAME = cro	DESIGNED - TPW	REVISED -
T:\Clients\SAUGET\7313-18-4 STP SBB Safety	Impr Ph 1 Grant App\CIVIL DWG\FINAL\	DRAWN - CRO	REVISED -
7313-18-4 DETAILS.dwg	PLOT SCALE = N.T.S.	CHECKED - MJS	REVISED -
	PLOT DATE = Apr 18, 2022 - 4:25PM	DATE - 4-18-2022	REVISED -

**STATE OF ILLINOIS  
DEPARTMENT OF TRANSPORTATION**

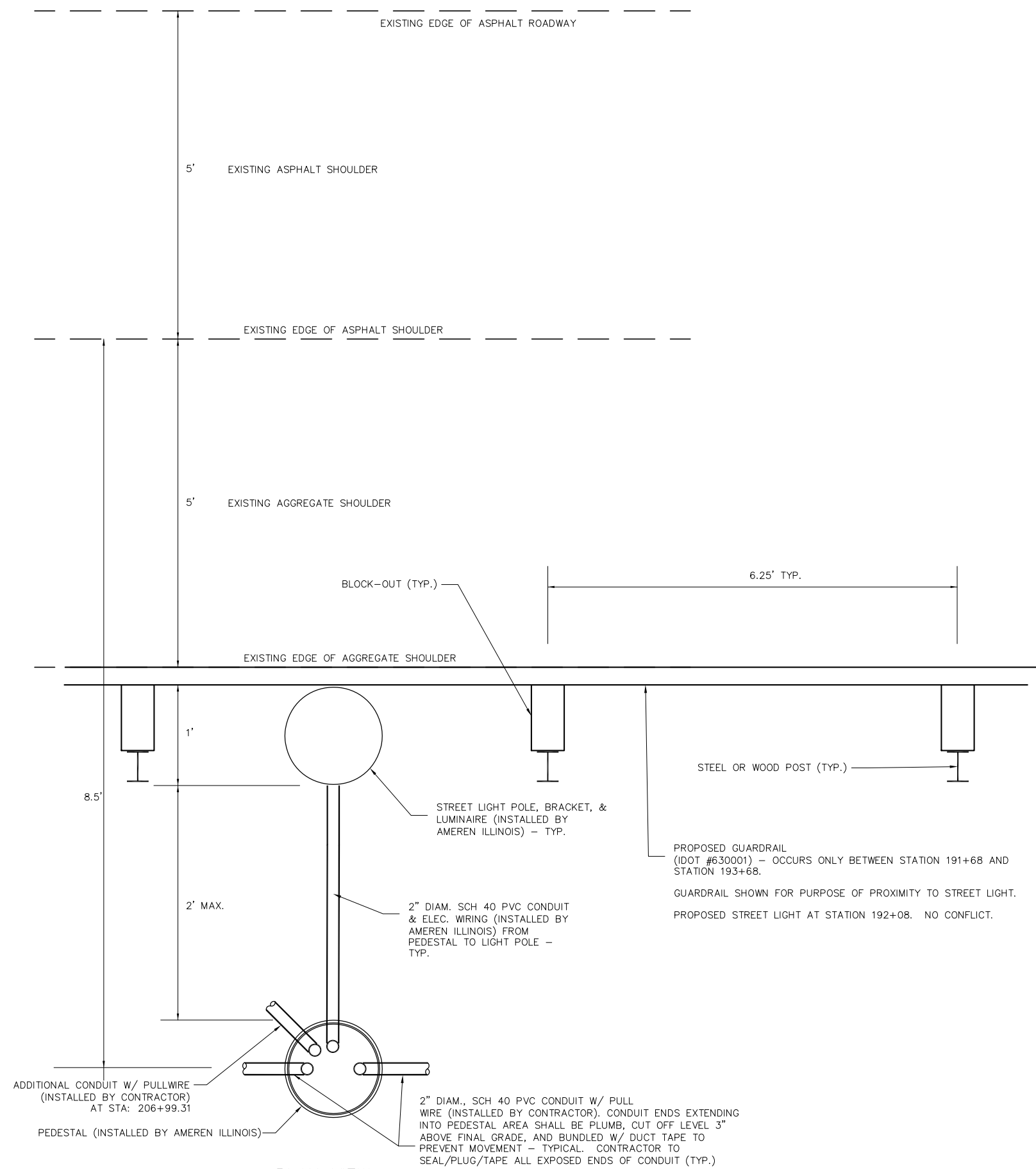
VILLAGE OF SAUGET		RTE.	SECTION	COUNTY	TOTAL SHEETS	SHEET NO.
SAUGET BUSINESS BLVD. - SAFETY IMPROVEMENTS ( DETAILS)		9212	18-00009-05-SP	ST. CLAIR	20	18
SCALE: N.T.S.	SHEET NO. 1 OF 1 SHEETS	STA.	TO STA.		CONTRACT NO. 97780	
ILLINOIS FEDERAL AID PROJECT						



**UTILITY POLE RISER DETAIL**  
NOT TO SCALE



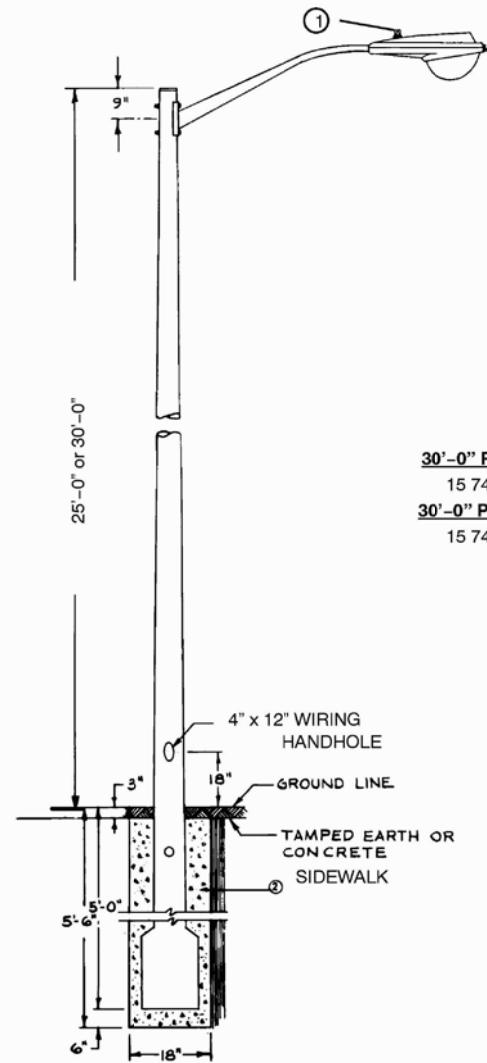
**SECTION VIEW**  
NOT TO SCALE



**PEDESTAL DETAILS**  
NOT TO SCALE

**PLAN VIEW**  
NOT TO SCALE

FILE NAME = T:\Clients\SAUGET\7313-18-4 STP SBB Safety 7313-18-4 DETAILS.dwg	USER NAME = cro	DESIGNED - TPW	REVISED -	<b>STATE OF ILLINOIS DEPARTMENT OF TRANSPORTATION</b>	<b>VILLAGE OF SAUGET SAUGET BUSINESS BLVD. - SAFETY IMPROVEMENTS ( DETAILS)</b>		RTE.	SECTION	COUNTY	TOTAL SHEETS	SHEET NO.
	Impr Ph 1 Grant App\CIVIL DWG\FINAL\	DRAWN - CRO	REVISED -		9212	18-00009-05-SP	ST. CLAIR	20	19	CONTRACT NO. 97780	
	PLOT SCALE = N.T.S.	CHECKED - MJS	REVISED -		SCALE: N.T.S.	SHEET NO. 1 OF 1 SHEETS	STA.	TO STA.		ILLINOIS FEDERAL AID PROJECT	
	PLOT DATE = Apr 19, 2022 - 4:10PM	DATE - 4-18-2022	REVISED -								



<b>6' Bracket</b>	
<b>30'-0" Pole (Gray)</b>	<b>35'-0" Pole (Gray)</b>
15 74 09 01	15 74 09 02
<b>30'-0" Pole (Black)</b>	<b>35'-0" Pole (Black)</b>
15 74 09 03	15 74 09 04

Notes:

1. Face photocontrol north.
2. Limestone screenings to be wetted and thoroughly tamped to provide solid compaction around pole.
3. OK to install second bracket at 180° if required.
4. \* For MO only.

	Std. / Stk. No.	Description	15 74 09 **			
A	38 01 555	Pole, St. Lt., Fiberglass, 30' O.H.	1			
	38 01 554	Pole, St. Lt., Fiberglass, 35' O.H.		1		
	38 01 970*	Pole, St. Lt., Fiberglass, Black, 30' O.H.			1	
	38 01 967*	Pole, St. Lt., Fiberglass, Black, 35' O.H.				1
B	38 01 556	Bracket, AL. 6'	1	1		
	38 01 968*	Bracket, AL. Black, 6'			1	1
C	18 57 104	Cable, St. Lt., #10-2 Conductor - Ft.	35	40	35	40
E	17 01 116	Connector, Bolted/Set Screw #14-2/0, 3 Pos	2	2	2	2
F	25 53 053	Tape, Rubber 3/4"	1	1	1	1
G		Rock, crushed, limestone screenings		850		850
H	<b>15 70 ** **</b>	Street light assembly	1	1	1	1