

STATE OF ILLINOIS
DEPARTMENT OF TRANSPORTATION
DIVISION OF HIGHWAYS

**PROPOSED
HIGHWAY PLANS**

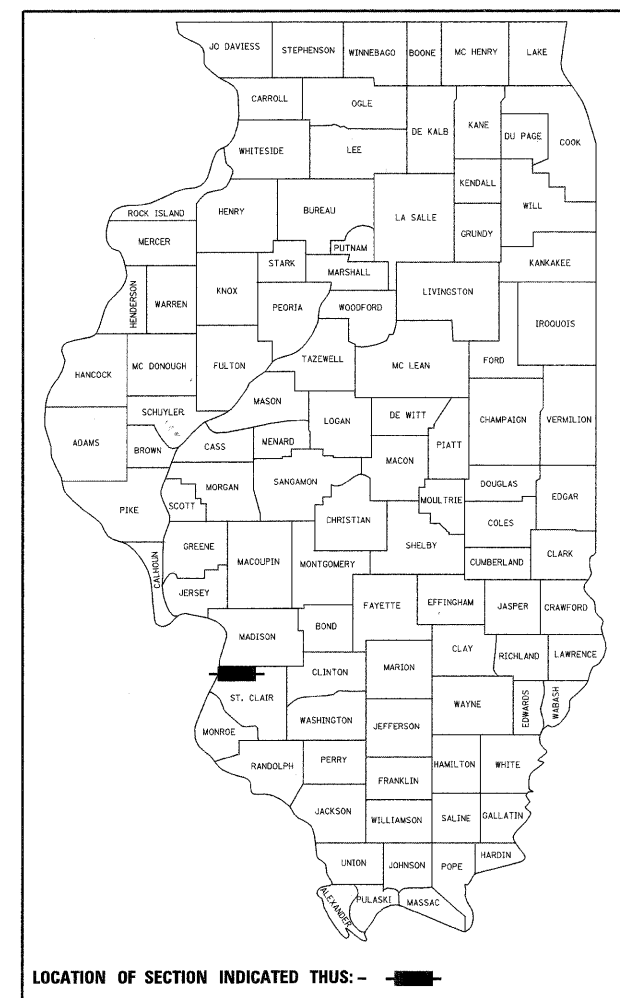
FAU ROUTE 9214 (BAUGH AVE)
SECTION 82-1-12LS

ST. CLAIR COUNTY
C-98-028-12
PROPOSED BAUGH AVENUE
LANDSCAPING AT 9TH STREET

F.A.U. RTE.	SECTION	COUNTY	TOTAL SHEETS	SHEET NO.
9214	82-1-12LS	ST. CLAIR	29	1
FED. ROAD DIST. NO.	ILLINOIS	CONTRACT NO. 76F35		

*29+1 = 30

D-98-024-12



FOR INDEX OF SHEETS, SEE SHEET NO. 2

DESIGN DESIGNATIONS

RAMP "P"	2,420 (2030) FREEWAY RAMP
9TH STREET	7,585 (2030) COLLECTOR
BAUGH AVE.	4,690 (2030) MINOR ARTERIAL

POSTED /DESIGN SPEEDS:

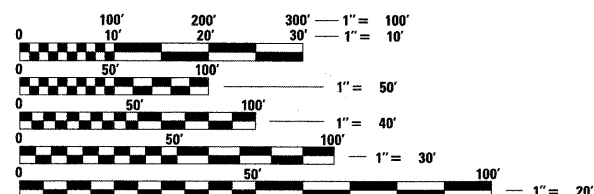
RAMP "P"	25 /25 MPH
9TH STREET	20 /20 MPH
BAUGH AVE.	20 /20 MPH



ROBERT J. STERN
EXPIRES: 11/30/13
DATE: 3/19/12
SHEETS: 1-4, 9-16

PROJECT LOCATED IN: EAST ST. LOUIS, ILLINOIS

PLANS
1" = 20'
1" = 10'

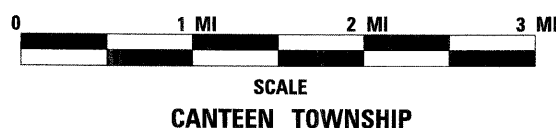
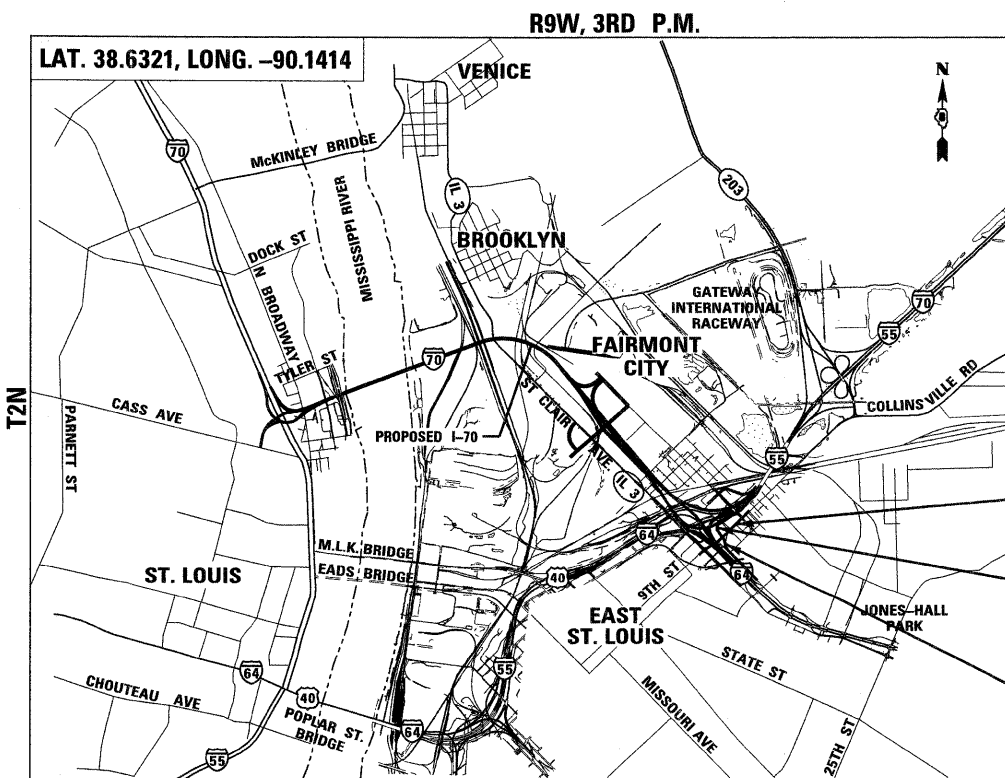


FULL SIZE PLANS HAVE BEEN PREPARED USING STANDARD ENGINEERING SCALES. REDUCED SIZED PLANS WILL NOT CONFORM TO STANDARD SCALES. IN MAKING MEASUREMENTS ON REDUCED PLANS, THE ABOVE SCALES MAY BE USED.

J.U.L.I.E.
JOINT UTILITY LOCATION INFORMATION FOR EXCAVATION
1-800-892-0123
OR 811

PROJECT ENGINEER : MICHAEL D. PRITCHETT (618) 346-3180
PROJECT MANAGER : N/A

CONTRACT NO. 76F35



GROSS /NET LENGTH OF PROJECT: 0.381 MI (2,011.57')
RAMP "P" 0.096 MI (507.13')
BAUGH AVE. 0.156 MI (822.08')
9TH ST. 0.129 MI (682.36')

9TH STREET
STA. 6+16.49 TO STA. 12+98.85

RAMP "P"
STA. 15+00.00 TO STA. 20+07.13

BAUGH AVE.
STA. 512+22.89 TO STA. 520+44.97

TENG
TENG & ASSOCIATES, INC.
ENGINEERS/ARCHITECTS/PLANNERS
205 N. MICHIGAN AVE., CHICAGO, IL 60601
TELEPHONE: 312-616-0000

STATE OF ILLINOIS
DEPARTMENT OF TRANSPORTATION
DIVISION OF HIGHWAYS

SUBMITTED March 21 20 12

Deputy Director of Highways, Region Engineer

May 25 20 12
John V. Baranelli, P.E. Jr.
acting ENGINEER OF DESIGN AND ENVIRONMENT

May 25 20 12
William R. Freyer Jr.
acting DIRECTOR OF HIGHWAYS, CHIEF ENGINEER

**PRINTED BY THE AUTHORITY
OF THE STATE OF ILLINOIS**