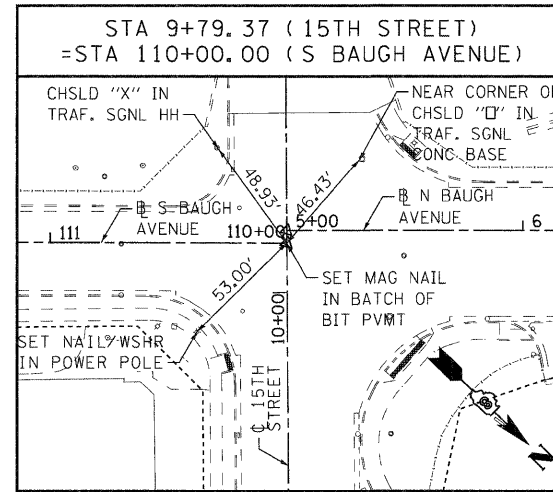
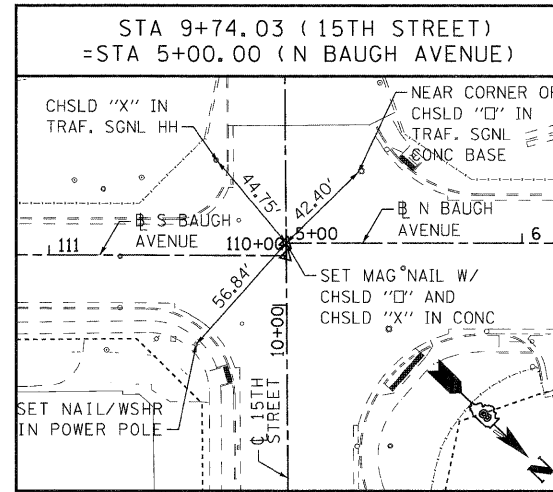
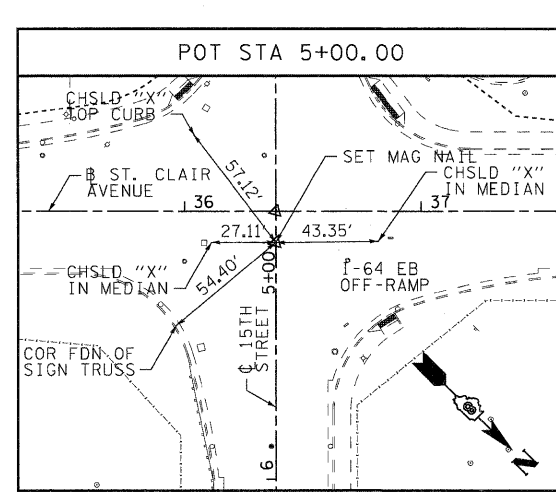
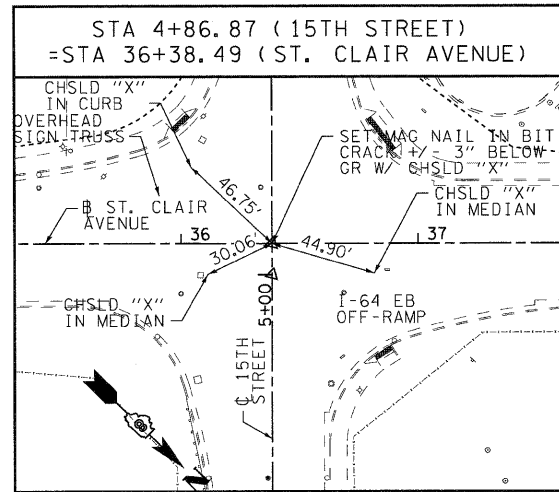
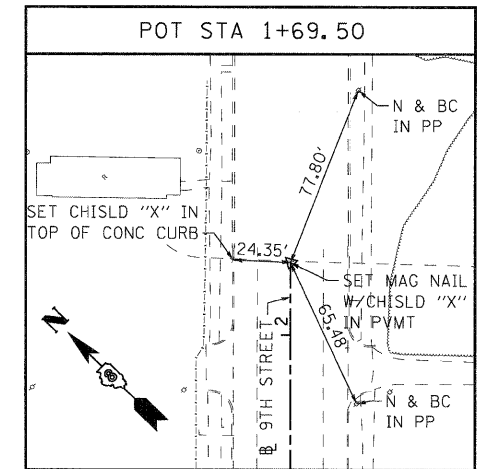


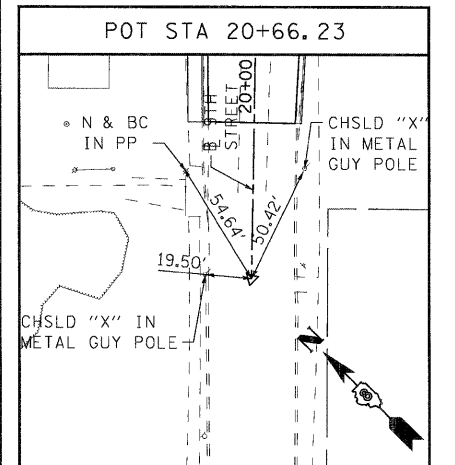
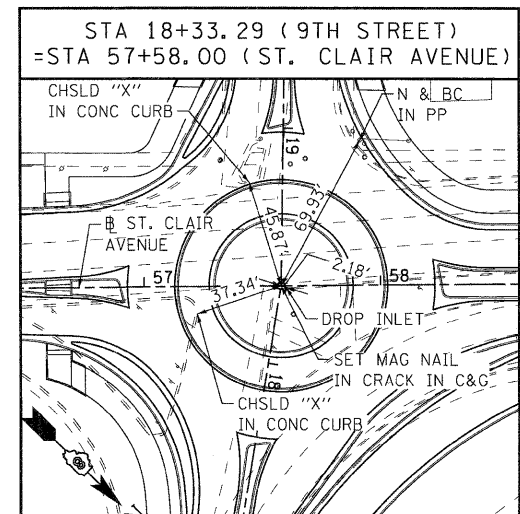
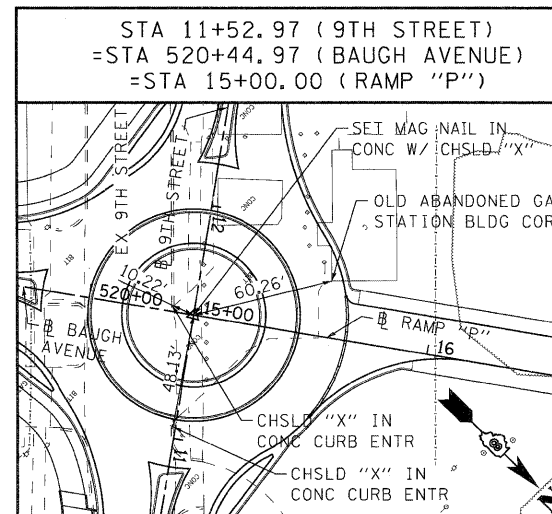
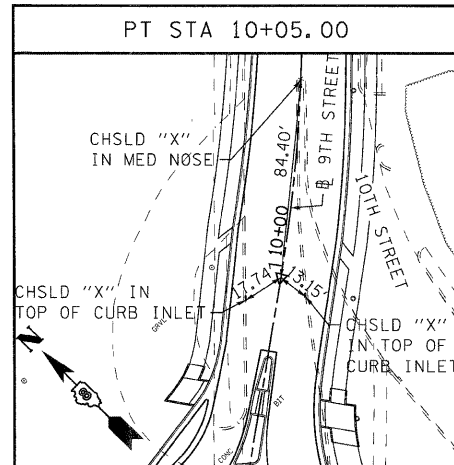
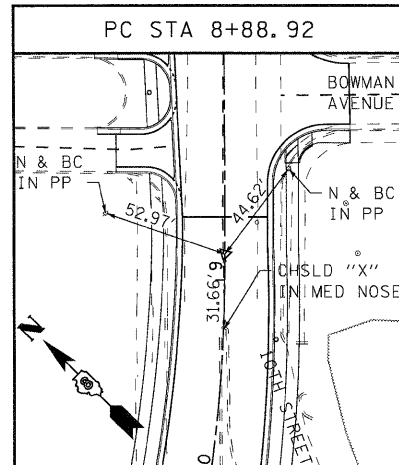
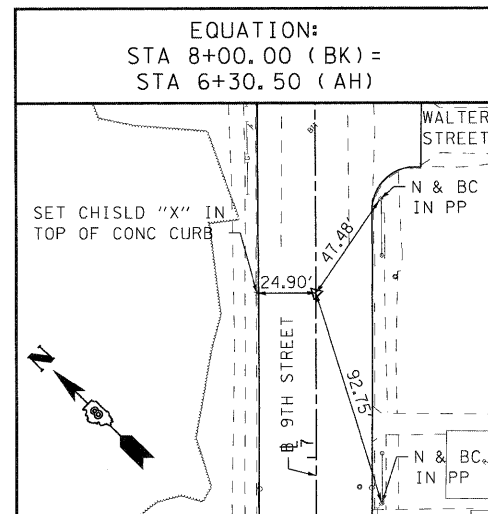
15TH STREET CENTERLINE



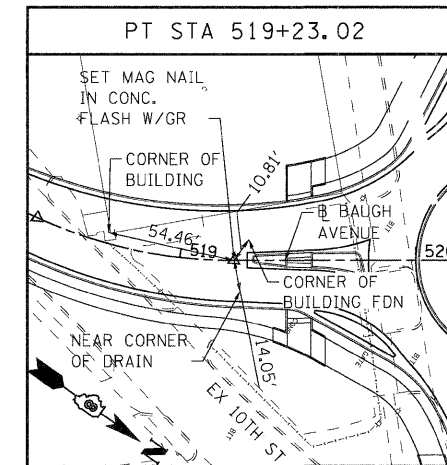
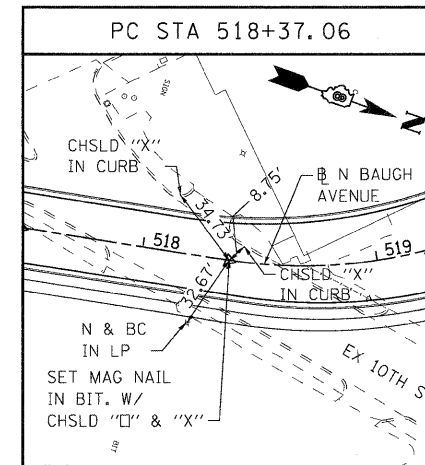
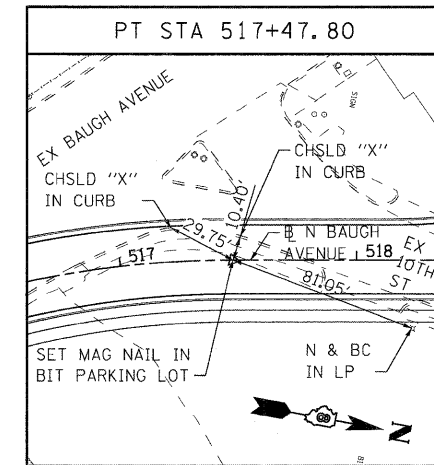
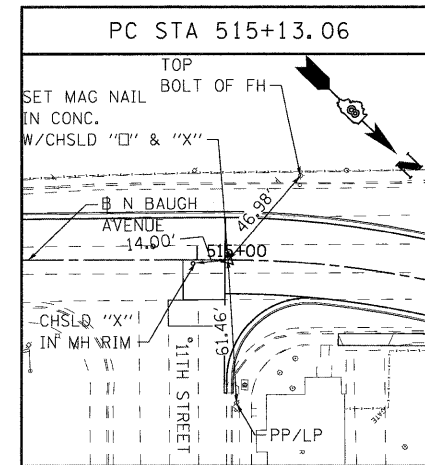
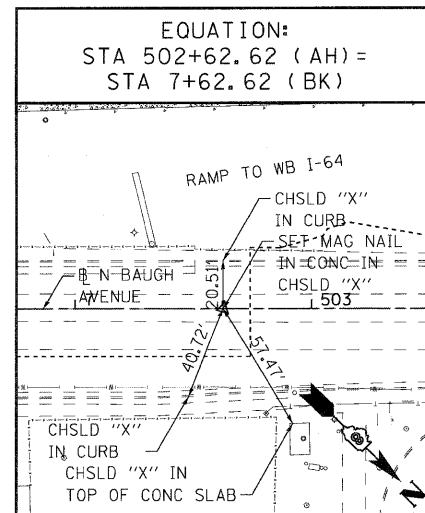
9TH STREET BASELINE



9TH STREET BASELINE

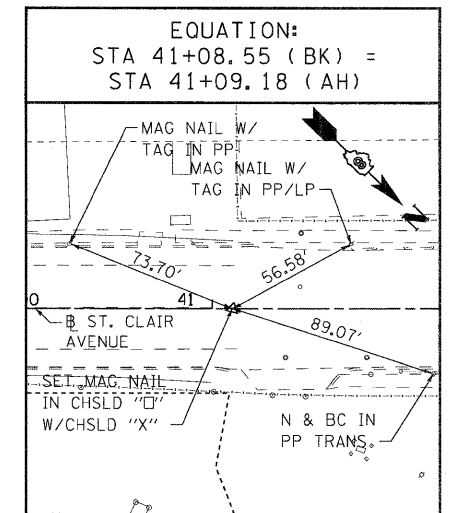


BAUGH AVENUE BASELINE



NOTE:
INFORMATION ON THIS SHEET
IS FROM CONTRACT 76C51.

ST. CLAIR AVENUE BASELINE



STATE OF ILLINOIS
DEPARTMENT OF TRANSPORTATION

ALIGNMENT, TIES, AND BENCHMARKS

F.A.U. RTE. 9166	SECTION 82-1-12LS-2	COUNTY ST. CLAIR	TOTAL SHEETS 29	SHEET NO. 7
SCALE: NONE		SHEET NO. 3 OF 4 SHEETS		STA. ----- TO STA. -----
FED. ROAD DIST. NO.		ILLINOIS FED. AID PROJECT		
CONTRACT NO. 76F36				

6/8/2011 10:05:30 AM

FILE NAME = DBTRI-76C51-sht-aligntblm-01-04.cgn

USER NAME = jlt
MODEL NAME = DBTRI-76C51-sht-aligntblm-03

DESIGNED - LDC
DRAWN - JDF

REVISOR -
REVISION -

CHECKED - GEB
DATE - 03/31/11

REVISOR -
REVISION -

DATE - 03/31/11

REVISOR -
REVISION -

DATE - 03/31/11

REVISOR -
REVISION -