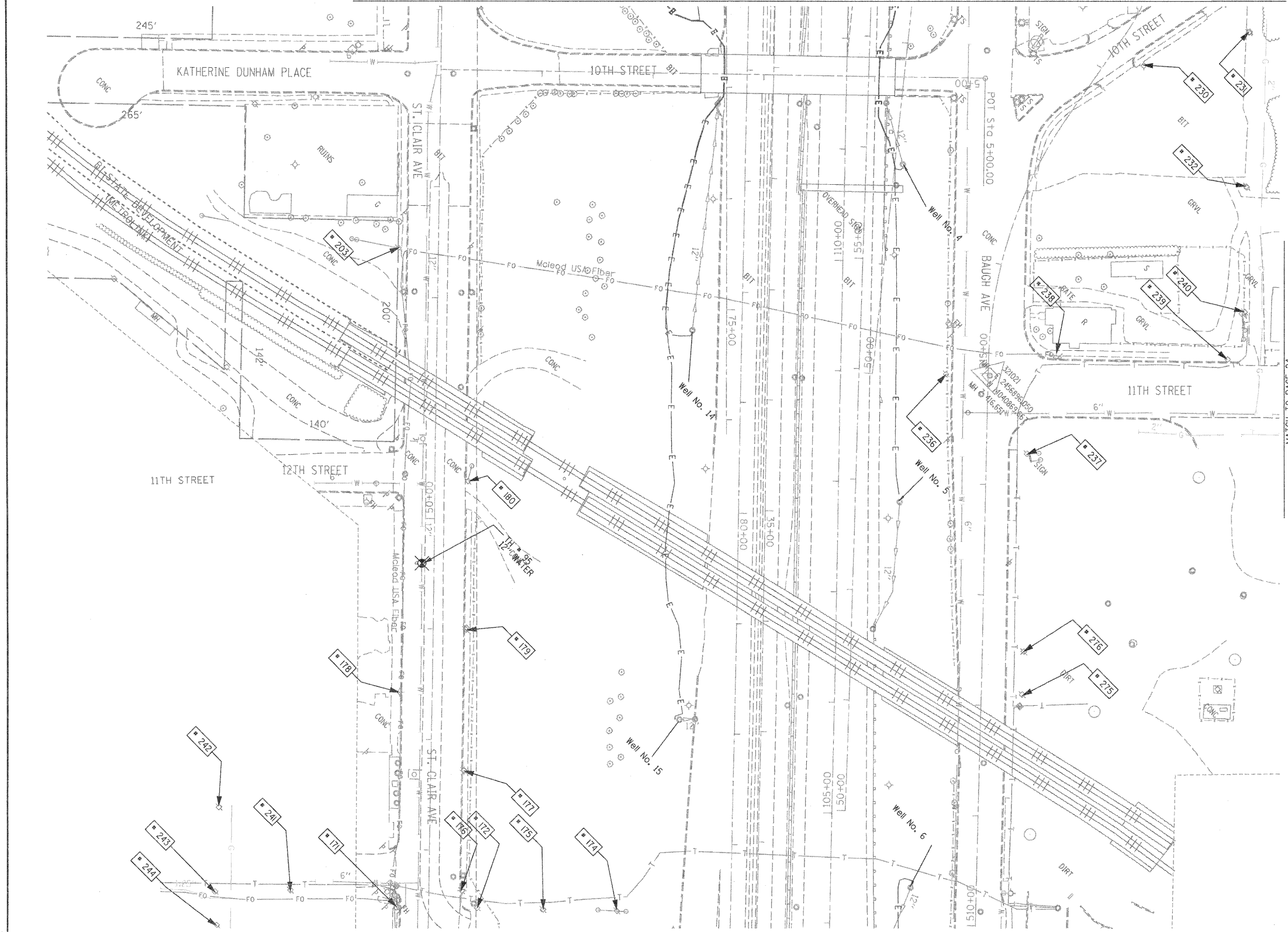


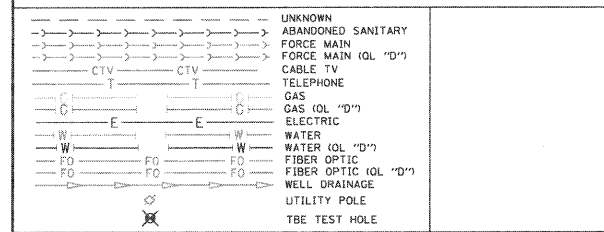
MATCH TO PAGE 17



TBE Pole Number	Approximate Location	Identification # on Pole	Utilities Attached to Poles	Utility Owners	Notes: Additional Items Attached to Poles
171	SE SIDE OF 13TH & ST. CLAIR	727993	ELECTRIC	AMEREN ELECTRIC	
172	327' W. OF VERONICA CL. N. SIDE OF ST. CLAIR	727999	ELECTRIC	AMEREN ELECTRIC	
174	327' W. OF VERONICA CL. N. SIDE OF ST. CLAIR	728401	ELECTRIC	AMEREN ELECTRIC	3 GUY S. TO GROUND
175	327' W. OF VERONICA CL. N. SIDE OF ST. CLAIR	728400	ELECTRIC	AMEREN ELECTRIC	
176	343' N. OF VERONICA CL. N. SIDE OF ST. CLAIR	727994	ELECTRIC	AMEREN ELECTRIC	LIGHT, GUY
177	94' W. OF 13TH ST. CL. N. SIDE OF ST. CLAIR	727995	ELECTRIC	AMEREN ELECTRIC	TRANSFORMER
178	163' W. OF 13TH ST. CL. S. SIDE OF ST. CLAIR	727998	ELECTRIC	AMEREN ELECTRIC	LIGHT
179	220' W. OF 13TH ST. CL. S. SIDE OF ST. CLAIR	NO TAG	ELECTRIC	AMEREN ELECTRIC	
180	353' W. OF 13TH ST. CL. N. SIDE OF ST. CLAIR	727997	ELECTRIC	AMEREN ELECTRIC	GUY
203	203' CL OF 12TH ST. ON ST. CLAIR	727978	ELECTRIC	AMEREN ELECTRIC	GUY S.
230	ON 10TH ST. 123' N. OF BAUGH	727520 21-1105 21-1176	ELECTRIC SERVICE	AMEREN ELECTRIC	LIGHT
231	ON 10TH ST. 237' N. OF BAUGH	727521	ELECTRIC, TELEPHONE, FIBER OPTIC	AT&T, AMEREN ELECTRIC	LIGHT, GUY TO E. & W.
232	E. OF POLE #231	727519 21-1106	ELECTRIC, TELEPHONE, FIBER OPTIC	AT&T, AMEREN ELECTRIC	LIGHT, TRANSFORMER
236	NW CORNER OF 11TH ST. & BAUGH	2475483	ELECTRIC SERVICE, TELEPHONE	AT&T, AMEREN ELECTRIC	METER
237	SE CORNER OF 11TH ST. & BAUGH	727515	ELECTRIC	AMEREN ELECTRIC	TRANSFORMER, GUY TO S.
238	NE CORNER OF 11TH ST. & BAUGH	727514	ELECTRIC, TELEPHONE, FIBER OPTIC	AT&T, AMEREN ELECTRIC	LIGHT, FIBER OPTIC DROP, GUY TO N.
239	225' NE CL OF 11TH ST. & BAUGH	727513 E2318	ELECTRIC, TELEPHONE, FIBER OPTIC	AT&T, AMEREN ELECTRIC	LIGHT, GUY TO S.
240	40' NW OF POLE #239	727518 1034	ELECTRIC, TELEPHONE, FIBER OPTIC	AT&T, AMEREN ELECTRIC	TEL. DROP, GUY TO S.
241	126' S. CL OF 13TH ST. & ST. CLAIR	727992	ELECTRIC	AMEREN ELECTRIC	
242	195' SW CL OF ST. CLAIR AT STA. 47+15	727987	ELECTRIC, TELEPHONE	AT&T, AMEREN ELECTRIC	
243	175' SW CL ST. CLAIR AT STA. 46+50	727990	ELECTRIC, TELEPHONE	AT&T, AMEREN ELECTRIC	GUY TO S.
244	175' SW CL ST. CLAIR AT STA. 46+25	NO TAG	ELECTRIC, TELEPHONE	AT&T, AMEREN ELECTRIC	
275	275' E. CL 11TH ST. & BAUGH ON N. SIDE OF BAUGH	727517	ELECTRIC	AMEREN ELECTRIC	GUY E., TRANSFORMER
276	236' E. CL 11TH ST. & BAUGH ON N. SIDE OF BAUGH	727516	ELECTRIC	AMEREN ELECTRIC	(3) TRANSFORMERS

MATCH TO PAGE 24

MATCH TO PAGE 19



Utilities shown in color on these plans as depicted in the legend have been investigated by TBE Group, Inc in accordance with SUE Industry Standards. All other information shown has been provided to TBE Group, Inc by others. TBE's SUE field investigation was finished on 5/22/09. Changes to utilities after this date may have been made and therefore may result in variances from this plan. Consideration should be given to updating this plan if deemed advisable prior to final design and construction.

ALL UTILITIES SHOWN QUALITY LEVEL "B" UNLESS NOTED OTHERWISE.

- Utility Quality Level "A" : Test Hole
- Utility Quality Level "B" : Designating
- Utility Quality Level "C" : Research with Survey
- Utility Quality Level "D" : Records Research

TBE GROUP, INC.
 CIVIL ENGINEERING • TRANSPORTATION • ENVIRONMENTAL
 PLANNING • UTILITY ENGINEERING/LOCATING

Checked By: _____ Date: _____
 TBE Job No. 1109500601-602,603,604, 607,608,609
 SUE Plan Page: 18 of 35

FILE NAME =	USER NAME =	DESIGNED EG, JP, LP	REVISED 7/28/09 - 8/26/09 ADDED TEST HOLES #60-108
#FILE#	PLOT SCALE = 1" = 50'	DRAWN KLC	REVISED
	PLOT DATE = #DATE#	CHECKED JB	REVISED
		DATE 9/15/09	REVISED

STATE OF ILLINOIS
 DEPARTMENT OF TRANSPORTATION

Mississippi River Bridge Project

F.A. RTE.	SECTION	COUNTY	TOTAL SHEETS	SHEET NO.
		St. Clair	29	21
PTB NO. 147-038				
FED. ROAD DIST. NO. [ILLINOIS] Job No.: D-98-061-08				

SCALE: SHEET NO. STA. TO STA.