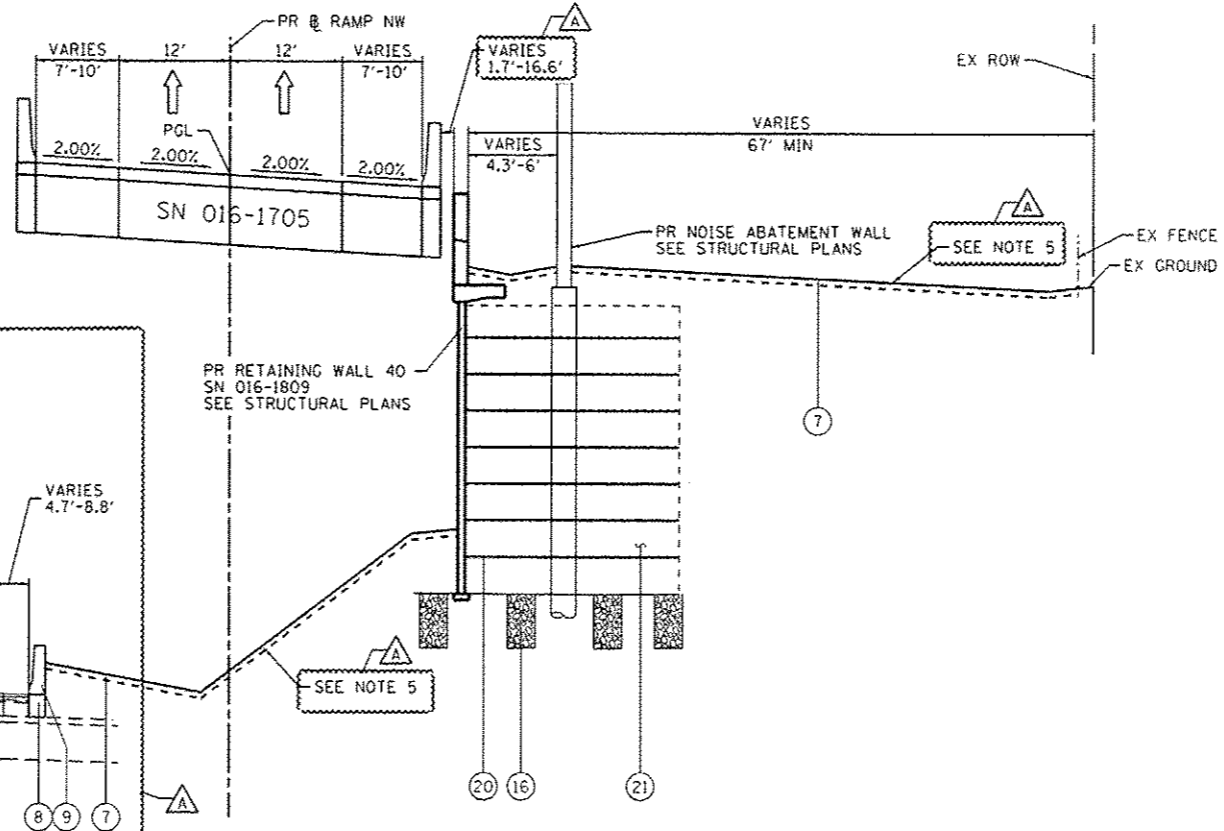


EXISTING TYPICAL SECTION
RAMP NW
 STA 1836+43.38 TO STA 1837+88.60

- EXISTING**
- (A) POLYMERIZED HOT-MIX ASPHALT SURFACE COURSE, STONE MATRIX ASPHALT, N80, 2"
 - (B) POLYMERIZED HOT-MIX ASPHALT BINDER COURSE, STONE MATRIX ASPHALT, N80, 2"
 - (C) BITUMINOUS CONCRETE SURFACE COURSE, CLASS 1 MIXTURE E, 1 1/2"
 - (D) PORTLAND CEMENT CONCRETE BASE COURSE, 9 1/4"
 - (E) STABILIZED SUBBASE, 4"
 - (F) POROUS GRANULAR EMBANKMENT, 24"
 - (G) PIPE UNDERDRAIN, 6"
 - (H) BITUMINOUS SHOULDER, 10"
 - (I) PORTLAND CEMENT CONCRETE SHOULDER, 9"
 - (J) COMBINATION CONCRETE CURB & GUTTER TYPE M-6.24

- PROPOSED**
- (1) PORTLAND CEMENT CONCRETE PAVEMENT 10 1/2" (JOINTED)
 - (2) STABILIZED SUBBASE-HOT MIX ASPHALT, 4"
 - (3) AGGREGATE SUBGRADE IMPROVEMENT 12"
 - (4) PORTLAND CEMENT CONCRETE SHOULDERS 10 1/2"
 - (5) RETAINING WALL / MSE WALL
 - (6) ITEM REMOVED
 - (7) TOPSOIL FURNISH AND PLACE, 4" SEEDING, CLASS 2A
 - (8) CONCRETE BARRIER BASE
 - (9) CONCRETE BARRIER, SINGLE FACE, 42" HEIGHT
 - (10) CONCRETE BARRIER, DOUBLE FACE, 42" HEIGHT
 - (11) LONGITUDINAL CONSTRUCTION JOINT, #6 EPOXY COATED BARS AT 30" CENTERS, INCLUDED IN COST OF PCC ITEMS
 - (12) LONGITUDINAL CONSTRUCTION JOINT, #6 EPOXY COATED BARS AT 24" CENTERS, INCLUDED IN COST OF PCC ITEMS
 - (13) TIE BARS, #6 EPOXY COATED BARS AT 24" CENTERS, INCLUDED IN COST OF COMBINATION CONCRETE CURB AND GUTTER TYPE B-6.24
 - (14) PIPE UNDERDRAINS 6"
 - (15) CHAIN LINK FENCE, 6'
 - (16) AGGREGATE COLUMN (SEE STRUCTURAL PLANS)
 - (17) CAST-IN-PLACE CONCRETE COPING SEAL WITH PUF (SEE STRUCTURAL PLANS)
 - (18) ANCHOR SLAB (SEE STRUCTURAL PLANS)
 - (19) PARAPET (SEE STRUCTURAL PLANS)
 - (20) SOIL REINFORCEMENT (SEE STRUCTURAL PLANS)
 - (21) LIGHTWEIGHT FILL (SEE STRUCTURAL PLANS)
 - (22) TEMPORARY PAVEMENT
 - (23) TEMPORARY CONCRETE BARRIER
 - (24) SUBBASE GRANULAR MATERIAL, TYPE C 4"
 - (25) CONCRETE MEDIAN SURFACE, SPECIAL - 4"
 - (26) POROUS GRANULAR EMBANKMENT
 - (27) PORTLAND CEMENT CONCRETE PAVEMENT 10" (JOINTED)
 - (28) PORTLAND CEMENT CONCRETE SHOULDER, 10"
 - (29) TEMPORARY CONCRETE BARRIER (TO REMAIN PERMANENTLY)
 - (30) POLYMERIZED HOT-MIX ASPHALT SURFACE COURSE, MIX "F", N90, (IL-9.5 MM): 1 3/4"
 - (31) HOT-MIX ASPHALT BINDER COURSE, IL-19.0, N70: 2 1/4"
 - (32) HOT-MIX ASPHALT SURFACE COURSE, MIX "D", N70, (IL-9.5 MM): 2"



PROPOSED TYPICAL SECTION
RAMP NW - INTERIM IMPROVEMENT (WB I-290 TIE-IN)
 STA 1836+43.38 TO STA 1837+88.60

- NOTES:**
1. THE ADDITIONAL THICKNESS OF AGGREGATE SUBGRADE IMPROVEMENT UNDER THE SHOULDER TO DRAIN TO UNDERDRAINS SHALL BE INCLUDED IN THE COST PER SQ. YD. OF AGGREGATE SUBGRADE IMPROVEMENT 24".
 2. THE MAXIMUM ROLLOVER BETWEEN THE PAVEMENT AND THE SHOULDER ON THE HIGH SIDE OF THE SUPERELEVATION IS 8.0%.
 3. FOR PORTLAND CEMENT CONCRETE PAVEMENT (JOINTED) DETAILS, SEE JOINTING AND PCC PAVEMENT DETAIL PLAN.
 4. SEE SE TRANSITION DATA TABLE FOR SUPERELEVATION TRANSITIONS.
 5. SEE GRADING PLAN FOR GRADING LIMITS AND SLOPES.
 6. SEE ROADWAY DETAILS FOR ADDITIONAL INFORMATION AND LIMITS OF VARIOUS TYPES OF CONCRETE BARRIERS.
 7. TIE BARS FOR BARRIER WALLS ARE NOT SHOWN ON THE TYPICAL SECTIONS FOR CLARITY.

• SEE NOTE 4
 •• END CONCRETE BARRIER, SINGLE FACE, 42" HEIGHT AT STA 1838+08.59
 RW 40 SN 016-1809 STA 1835+80.23 TO STA 1838+18.21
 STA 1322+49.13 TO STA 1325+11.44 (# RAMP SW)
 NOISE ABATEMENT WALL STA 1836+77.17 TO 1841+28.70

BOXED ITEMS ARE INCLUDED IN THE COST OF THE CONTRACT.



0160V28-sh1-Typical-04.dgn
 USER NAME: aljzadeh
 PLOT SCALE: 1/8" = 1'-0"
 PLOT DATE: 5/27/2014

DESIGNED - KAM
 DRAWN - NSA
 CHECKED - KCF
 DATE - 04/28/14

REVISED - 5/27/2014
 REVISED -
 REVISED -
 REVISED -

STATE OF ILLINOIS
 DEPARTMENT OF TRANSPORTATION

TYPICAL SECTIONS		F.A.I. RTE.	SECTION	COUNTY	TOTAL SHEETS	SHEET NO.
SCALE: NONE	SHEET 4 OF 11 SHEETS	90/94/290	2013-010R	COOK	747	25
					CONTRACT NO. 60W28	
ILLINOIS/FED. AID PROJECT						