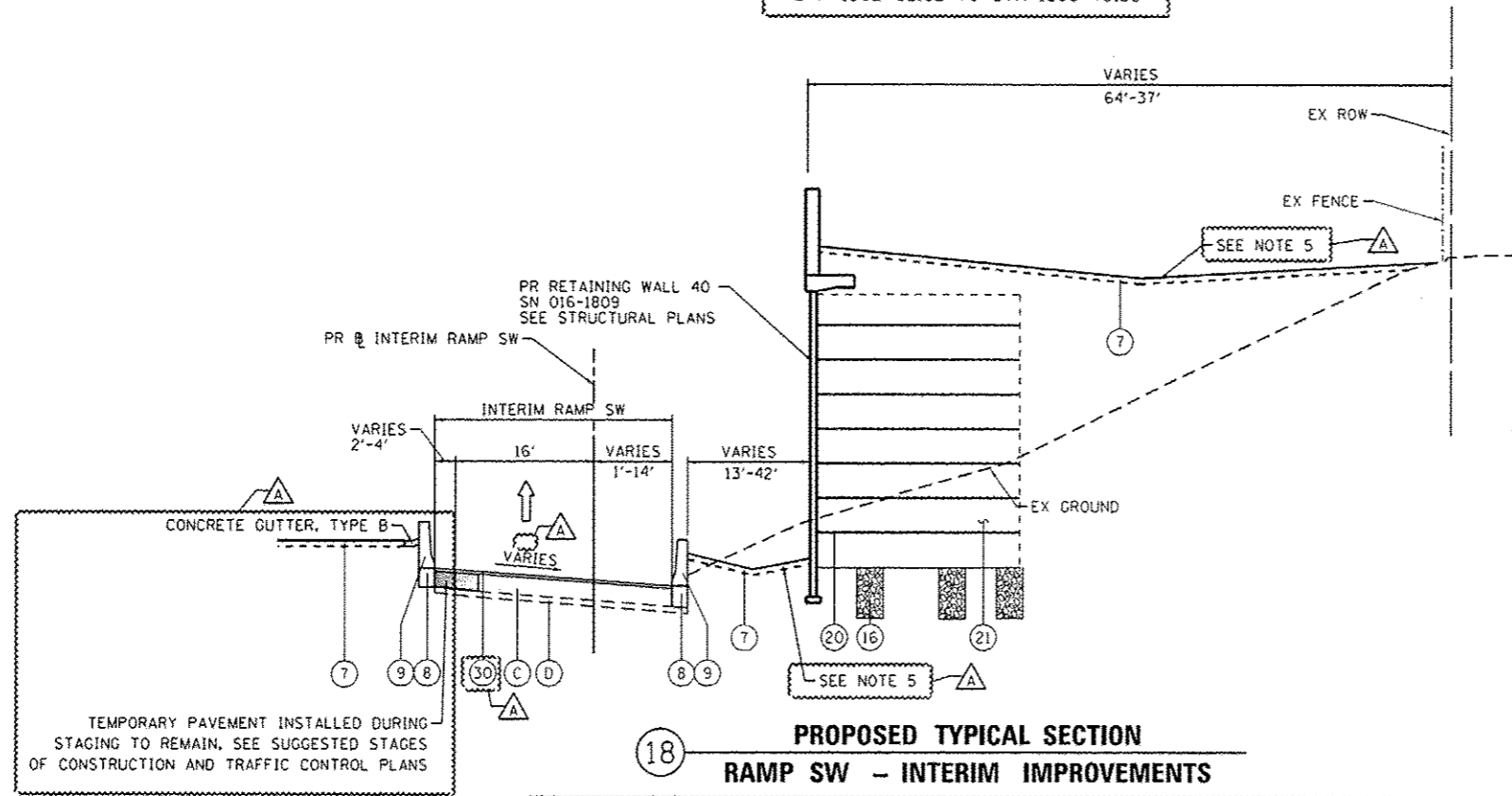


17 **EXISTING TYPICAL SECTION
RAMP SW**

STA 1302+02.82 TO STA 1303+75.33



18 **PROPOSED TYPICAL SECTION
RAMP SW - INTERIM IMPROVEMENTS**

STA 1302+02.82 TO STA 1304+23.91
(@ INTERIM RAMP SW)
LEFT CONCRETE BARRIER AND CONCRETE GUTTER STA 1302+02.91 TO STA 1303+75.33
RIGHT CONCRETE BARRIER BEGINS AT STA 1303+49.30

EXISTING

- (A) HOT-MIX ASPHALT SURFACE COURSE, MIX "D", N70, 1 1/2"
- (B) HOT-MIX ASPHALT BINDER COURSE, IL-19.0, N70, 2 1/4"
- (C) PORTLAND CEMENT CONCRETE PAVEMENT, 10" & VARIES
- (D) SUBBASE GRANULAR MATERIAL, 6" & VARIES
- (E) PIPE UNDERDRAIN, 6"
- (F) HOT-MIX ASPHALT SHOULDER, 10" & VARIES
- (G) CONCRETE BARRIER

PROPOSED

- (1) PORTLAND CEMENT CONCRETE PAVEMENT 10 1/2" (JOINTED)
- (2) STABILIZED SUBBASE-HOT MIX ASPHALT, 4"
- (3) AGGREGATE SUBGRADE IMPROVEMENT 12"
- (4) PORTLAND CEMENT CONCRETE SHOULDERS 10 1/2"
- (5) RETAINING WALL / MSE WALL
- (6) ITEM REMOVED
- (7) TOPSOIL FURNISH AND PLACE, 4" SEEDING, CLASS 2A
- (8) CONCRETE BARRIER BASE
- (9) CONCRETE BARRIER, SINGLE FACE, 42" HEIGHT
- (10) CONCRETE BARRIER, DOUBLE FACE, 42" HEIGHT
- (11) LONGITUDINAL CONSTRUCTION JOINT, #6 EPOXY COATED BARS AT 30" CENTERS, INCLUDED IN COST OF PCC ITEMS
- (12) LONGITUDINAL CONSTRUCTION JOINT, #6 EPOXY COATED BARS AT 24" CENTERS, INCLUDED IN COST OF PCC ITEMS
- (13) TIE BARS, #6 EPOXY COATED BARS AT 24" CENTERS, INCLUDED IN COST OF COMBINATION CONCRETE CURB AND GUTTER TYPE B-6.24
- (14) PIPE UNDERDRAINS 6"
- (15) CHAIN LINK FENCE, 6'
- (16) AGGREGATE COLUMN (SEE STRUCTURAL PLANS)
- (17) CAST-IN-PLACE CONCRETE COPING SEAL WITH PJF (SEE STRUCTURAL PLANS)
- (18) ANCHOR SLAB (SEE STRUCTURAL PLANS)
- (19) PARAPET (SEE STRUCTURAL PLANS)
- (20) SOIL REINFORCEMENT (SEE STRUCTURAL PLANS)
- (21) LIGHTWEIGHT FILL (SEE STRUCTURAL PLANS)
- (22) TEMPORARY PAVEMENT
- (23) TEMPORARY CONCRETE BARRIER
- (24) SUBBASE GRANULAR MATERIAL, TYPE C 4"
- (25) CONCRETE MEDIAN SURFACE, SPECIAL - 4"
- (26) POROUS GRANULAR EMBANKMENT
- (27) PORTLAND CEMENT CONCRETE PAVEMENT 10" (JOINTED)
- (28) PORTLAND CEMENT CONCRETE SHOULDER, 10"
- (29) TEMPORARY CONCRETE BARRIER (TO REMAIN PERMANENTLY)
- (30) POLYMERIZED HOT-MIX ASPHALT SURFACE COURSE, MIX "F", N90, (IL-9.5 MM); 1 3/4"
- (31) HOT-MIX ASPHALT BINDER COURSE, IL-19.0, N70; 2 1/4"
- (32) HOT-MIX ASPHALT SURFACE COURSE, MIX "D", N70, (IL-9.5 MM); 2"

NOTES:

1. THE ADDITIONAL THICKNESS OF AGGREGATE SUBGRADE IMPROVEMENT UNDER THE SHOULDER TO DRAIN TO UNDERDRAINS SHALL BE INCLUDED IN THE COST PER SQ. YD. OF AGGREGATE SUBGRADE IMPROVEMENT 24".
2. THE MAXIMUM ROLLOVER BETWEEN THE PAVEMENT AND THE SHOULDER ON THE HIGH SIDE OF THE SUPERELEVATION IS 8.0%.
3. FOR PORTLAND CEMENT CONCRETE PAVEMENT (JOINTED) DETAILS, SEE JOINTING AND PCC PAVEMENT DETAIL PLAN.
4. SEE SE TRANSITION DATA TABLE FOR SUPERELEVATION TRANSITIONS.
5. SEE GRADING PLAN FOR GRADING LIMITS AND SLOPES.
6. SEE ROADWAY DETAILS FOR ADDITIONAL INFORMATION AND LIMITS OF VARIOUS TYPES OF CONCRETE BARRIERS.
7. TIE BARS FOR BARRIER WALLS ARE NOT SHOWN ON THE TYPICAL SECTIONS FOR CLARITY.

BOXED ITEMS ARE INCLUDED IN THE COST OF THE CONTRACT.

FILE PATH: C:\Users\m11zad@nt\OneDrive\Documents\Projects\Illinois\60W28\60W28-INT-TYPICAL-08.dgn



DIGW28-INT-TYPICAL-08.dgn
USER NAME: elizad@n
PLOT SCALE: 1/4" = 1'-0"
PLOT DATE: 5/27/2014

DESIGNED - KAM
DRAWN - NSA
CHECKED - KCF
DATE - 04/28/14

REVISED - 5/27/2014
REVISED -
REVISED -
REVISED -

STATE OF ILLINOIS
DEPARTMENT OF TRANSPORTATION

TYPICAL SECTIONS
SCALE: NONE SHEET 8 OF 11 SHEETS STA. TO STA.

F.A.I. RTE.	SECTION	COUNTY	TOTAL SHEETS	SHEET NO.
90/94/290	2013-010R	COOK	747	29
CONTRACT NO. 60W28				
ILLINOIS FEB. AND PROJECT				