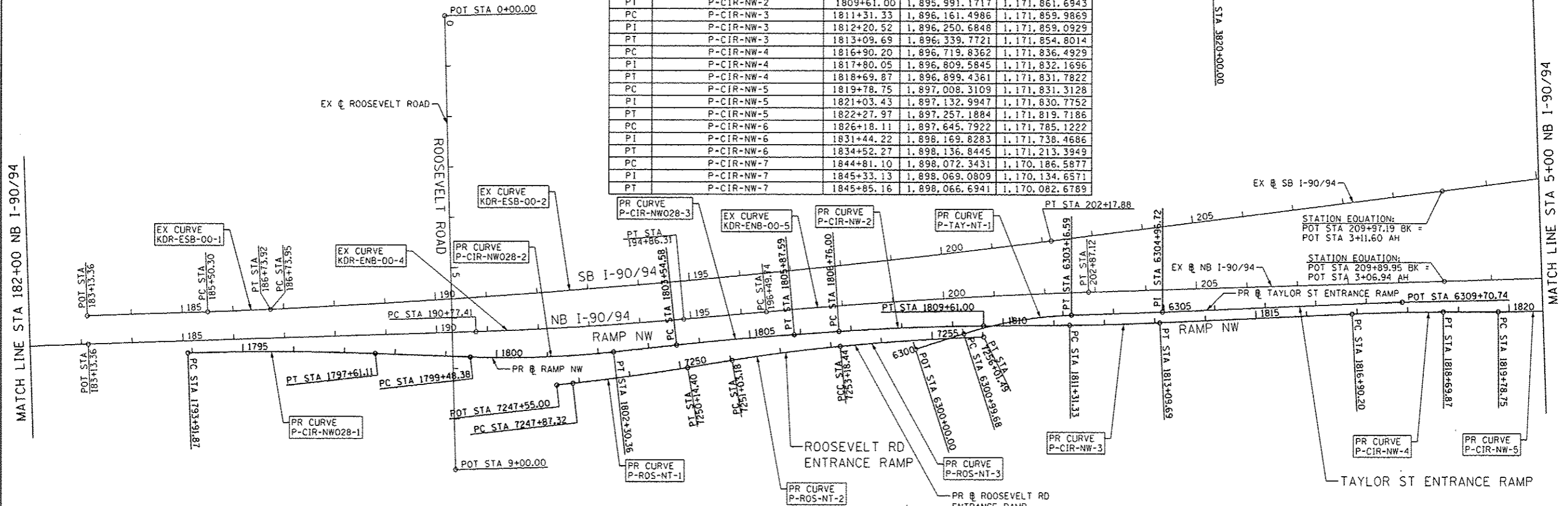


PR ROOSEVELT RD ENTRANCE RAMP				
POINT	DESCRIPTION	STATION	NORTHING	EASTING
POT		7247+55.00	1,895,151.0859	1,171,980.2449
PC	P-ROS-NT-1	7247+87.32	1,895,183.2039	1,171,976.6754
PI	P-ROS-NT-1	7249+00.89	1,895,296.0805	1,171,964.1308
PT	P-ROS-NT-1	7250+14.40	1,895,408.0935	1,171,945.3809
PC	P-ROS-NT-2	7251+03.18	1,895,495.6517	1,171,930.7245
PI	P-ROS-NT-2	7252+10.85	1,895,601.8459	1,171,912.9485
PCC	P-ROS-NT-2/P-ROS-NT-3	7253+18.44	1,895,709.0118	1,171,902.5239
PI	P-ROS-NT-3	7254+60.00	1,895,849.9158	1,171,888.8174
PT	P-ROS-NT-3	7256+01.49	1,895,991.3922	1,171,883.6932

PR RAMP NW				
POINT	DESCRIPTION	STATION	NORTHING	EASTING
PC	P-CIR-NW028-1	1793+91.87	1,894,424.9433	1,171,917.3942
PI	P-CIR-NW028-1	1795+76.56	1,894,609.5332	1,171,911.2671
PT	P-CIR-NW028-1	1797+61.11	1,894,794.1009	1,171,918.0313
PC	P-CIR-NW028-2	1799+48.38	1,894,981.2518	1,171,924.8902
PI	P-CIR-NW028-2	1800+89.63	1,895,122.4042	1,171,930.0633
PT	P-CIR-NW028-2	1802+30.36	1,895,262.7818	1,171,914.4154
PC	P-CIR-NW028-3	1803+54.58	1,895,386.2379	1,171,900.6538
PI	P-CIR-NW028-3	1804+71.10	1,895,502.0395	1,171,887.7454
PT	P-CIR-NW028-3	1805+87.59	1,895,618.2654	1,171,879.4886
PC	P-CIR-NW-2	1806+76.00	1,895,706.4495	1,171,873.2240
PI	P-CIR-NW-2	1808+18.54	1,895,848.6350	1,171,863.1231
PT	P-CIR-NW-2	1809+61.00	1,895,991.1717	1,171,861.6943
PC	P-CIR-NW-3	1811+31.33	1,896,161.4986	1,171,859.9869
PI	P-CIR-NW-3	1812+20.52	1,896,250.6848	1,171,859.0929
PT	P-CIR-NW-3	1813+09.69	1,896,339.7721	1,171,854.8014
PC	P-CIR-NW-4	1816+90.20	1,896,719.8362	1,171,836.4929
PI	P-CIR-NW-4	1817+80.05	1,896,809.5845	1,171,832.1696
PT	P-CIR-NW-4	1818+69.87	1,896,899.4361	1,171,831.7822
PC	P-CIR-NW-5	1819+78.75	1,897,008.3109	1,171,831.3128
PI	P-CIR-NW-5	1821+03.43	1,897,132.9947	1,171,830.7752
PT	P-CIR-NW-5	1822+27.97	1,897,257.1884	1,171,819.7186
PC	P-CIR-NW-6	1826+18.11	1,897,645.7922	1,171,785.1222
PI	P-CIR-NW-6	1831+44.22	1,898,169.8283	1,171,738.4686
PT	P-CIR-NW-6	1834+52.27	1,898,136.8445	1,171,213.3949
PC	P-CIR-NW-7	1844+81.10	1,898,072.3431	1,170,186.5877
PI	P-CIR-NW-7	1845+33.13	1,898,069.0809	1,170,134.6571
PT	P-CIR-NW-7	1845+85.16	1,898,066.6941	1,170,082.6789



PR TAYLOR ST ENTRANCE RAMP				
POINT	DESCRIPTION	STATION	NORTHING	EASTING
POT		6300+00.00	1,895,857.2153	1,171,908.2544
PC	P-TAY-NT-1	6300+99.68	1,895,952.0571	1,171,877.5920
PI	P-TAY-NT-1	6302+08.82	1,896,055.9124	1,171,844.0155
PT	P-TAY-NT-1	6303+16.59	1,896,164.9841	1,171,839.9315
PI	P-TAY-NT-1	6304+96.72	1,896,344.9999	1,171,833.5221
POT		6309+70.74	1,896,818.5567	1,171,812.5159

EX ROOSEVELT ROAD				
POINT	DESCRIPTION	STATION	NORTHING	EASTING
POT		0+00.00	1,894,929.7554	1,171,247.9357
POT		9+00.00	1,894,952.5805	1,172,147.6462

EX SB I-90/94 (KENNEDY EXPY)				
POINT	DESCRIPTION	STATION	NORTHING	EASTING
POT		183+13.36	1,894,226.7720	1,171,843.7613
PC	KDR-ESB-00-1	185+50.30	1,894,463.5855	1,171,835.9008
PI	KDR-ESB-00-1	186+12.11	1,894,525.3637	1,171,833.8503
PT	KDR-ESB-00-1	186+73.92	1,894,587.1007	1,171,830.8004
PC	KDR-ESB-00-2	186+73.95	1,894,587.1274	1,171,830.7991
PI	KDR-ESB-00-2	194+46.34	1,895,358.5739	1,171,792.6885
PT	KDR-ESB-00-2	202+17.88	1,896,124.4241	1,171,692.4111
POT	209+97.19 BK, 3+11.60 AH		1,896,897.1317	1,171,591.2358
TS	KDR-ESB-00-3B	5+79.29	1,897,162.5525	1,171,556.4826
PIS	KDR-ESB-00-3B	6+79.30	1,897,261.7152	1,171,543.4986
SC	KDR-ESB-00-3	7+29.29	1,897,311.5276	1,171,539.0772
PI	KDR-ESB-00-3	8+34.32	1,897,416.1453	1,171,529.7912
CS	KDR-ESB-00-3	9+39.11	1,897,521.1330	1,171,532.7356
PIS	KDR-ESB-00-3A	9+89.11	1,897,571.1183	1,171,534.1374
ST	KDR-ESB-00-3A	10+89.10	1,897,670.8779	1,171,541.1020

EX SB I-90/94 (KENNEDY EXPY)				
TS	DESCRIPTION	STATION	NORTHING	EASTING
PIS	KDR-ESB-00-4B	10+95.19	1,897,676.9607	1,171,541.5267
SC	KDR-ESB-00-4B	12+28.55	1,897,809.9894	1,171,550.8139
PI	KDR-ESB-00-4	12+95.19	1,897,876.6634	1,171,551.9707
CS	KDR-ESB-00-4	13+66.51	1,897,947.9712	1,171,553.2078
PIS	KDR-ESB-00-4A	14+37.76	1,898,019.1728	1,171,549.1239
ST	KDR-ESB-00-4A	15+04.45	1,898,085.7441	1,171,545.3056
PC	KDR-ESB-00-4A	16+37.75	1,898,218.2892	1,171,530.7143
PI	KDR-ESB-00-5	16+76.77	1,898,257.0735	1,171,526.4446
PT	KDR-ESB-00-5	19+84.85	1,898,563.3008	1,171,492.7332
PC	KDR-ESB-00-5	22+92.78	1,898,870.8971	1,171,475.5242
PI	KDR-ESB-00-6	25+30.01	1,899,107.7534	1,171,462.2729
PT	KDR-ESB-00-6	28+07.67	1,899,384.9870	1,171,446.7626
POT	KDR-ESB-00-6	30+85.31	1,899,662.5150	1,171,437.9735
POT		45+34.00	1,901,110.4797	1,171,392.1175

FILE PATH: E:\Users\jpratt\pwork\060628-addendum\0182828-Sub-A1B-R4.dgn



DIGW28-Sub-A1B-R4.dgn  
 USER NAME: jpratt  
 PLOT SCALE: 1/4" = 100'  
 PLOT DATE: 5/25/2014

DESIGNED - KAM  
 DRAWN - NSA/OPS  
 CHECKED - KCF  
 DATE - 04/28/14

REVISED - 5/27/2014  
 REVISED -  
 REVISED -  
 REVISED -

STATE OF ILLINOIS  
 DEPARTMENT OF TRANSPORTATION

ALIGNMENT, TIES AND BENCHMARKS

SCALE: 1" = 100' SHEET 4 OF 12 SHEETS STA. TO STA.

F.A.I. RTE.	SECTION	COUNTY	TOTAL SHEETS	SHEET NO.
90/94/290	2013-010R	COOK	747	50
CONTRACT NO. 60W28				
ILLINOIS FED. AID PROJECT				