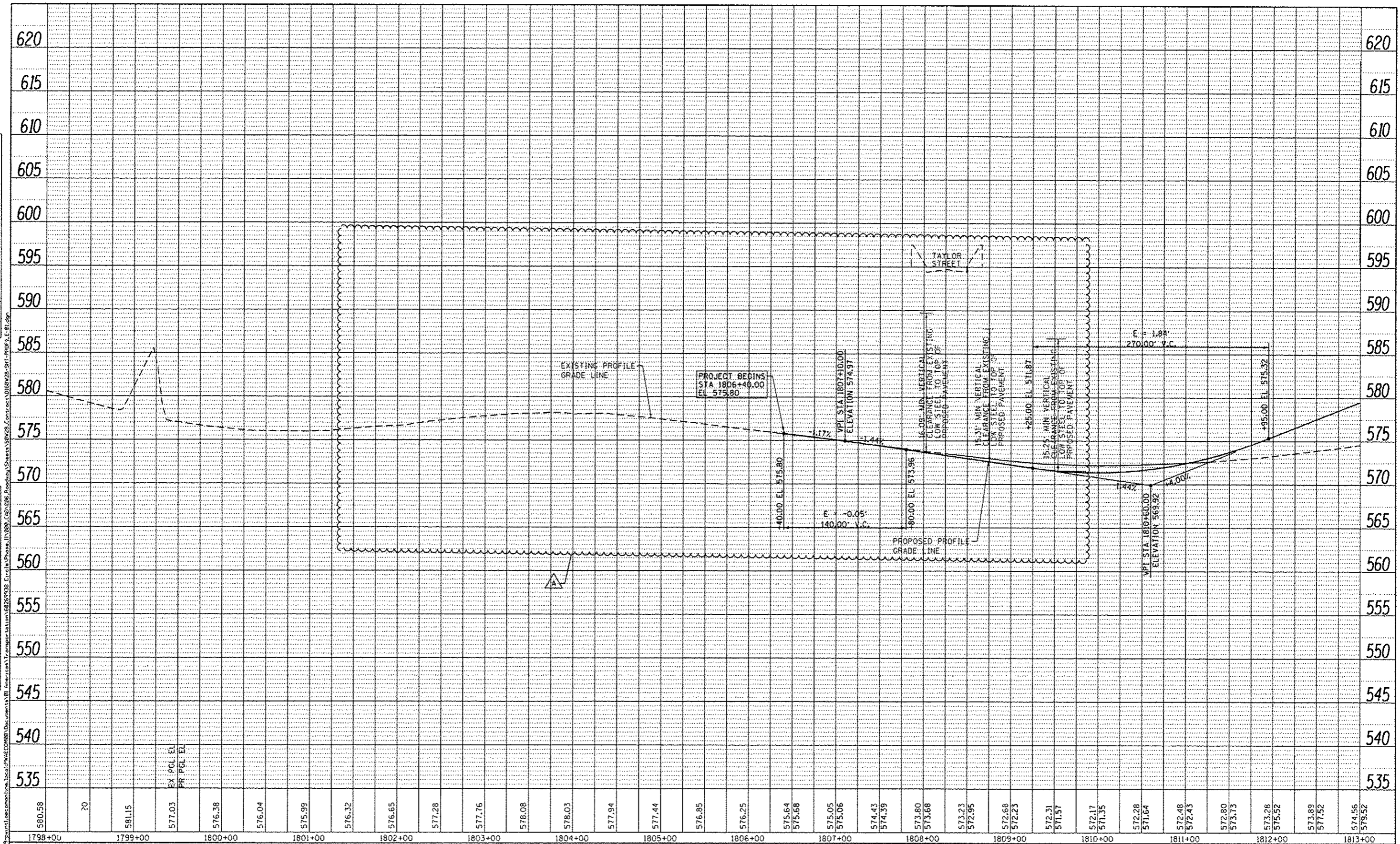


DATE	BY
APPROVED	
IN TOWN	
NO. OF SHEETS	
NO. OF SHEETS	
NO. OF SHEETS	

DATE	BY
APPROVED	
IN TOWN	
NO. OF SHEETS	
NO. OF SHEETS	
NO. OF SHEETS	



580.58	20	581.15	577.03	576.38	576.04	575.99	576.32	576.65	577.28	577.76	578.08	578.03	577.94	577.44	576.85	576.25	575.64	575.68	575.05	575.06	574.43	574.39	573.80	573.68	573.23	572.95	572.68	572.23	572.31	571.57	572.17	571.35	572.28	571.64	572.48	572.43	572.80	573.73	573.28	573.52	573.89	577.52	574.56	579.52
1798+00		1799+00		1800+00		1801+00		1802+00		1803+00		1804+00		1805+00		1806+00		1807+00		1808+00		1809+00		1810+00		1811+00		1812+00		1813+00														

RAMP NW



D166W28-SH1-PROFILE-01.dgn	DESIGNED - KAM	REVISED - 5/27/2014
USER NAME - pmsprno	DRAWN - NSA	REVISED -
PLOT SCALE - 1/8"=1'-0"	CHECKED - KCF	REVISED -
PLOT DATE - 5/27/2014	DATE - 04/28/14	REVISED -

STATE OF ILLINOIS
DEPARTMENT OF TRANSPORTATION

ROADWAY PROFILE
RAMP NW

SCALE: 1"=50' SHEET 1 OF 4 SHEETS STA. 1802+75 TO STA. 1813+00

F.A.I. RTE. 90/94/290	SECTION 2013-010R	COUNTY COOK	TOTAL SHEETS 747	SHEET NO. 66
CONTRACT NO. 60W28				
[ILLINOIS] FED. AID PROJECT				