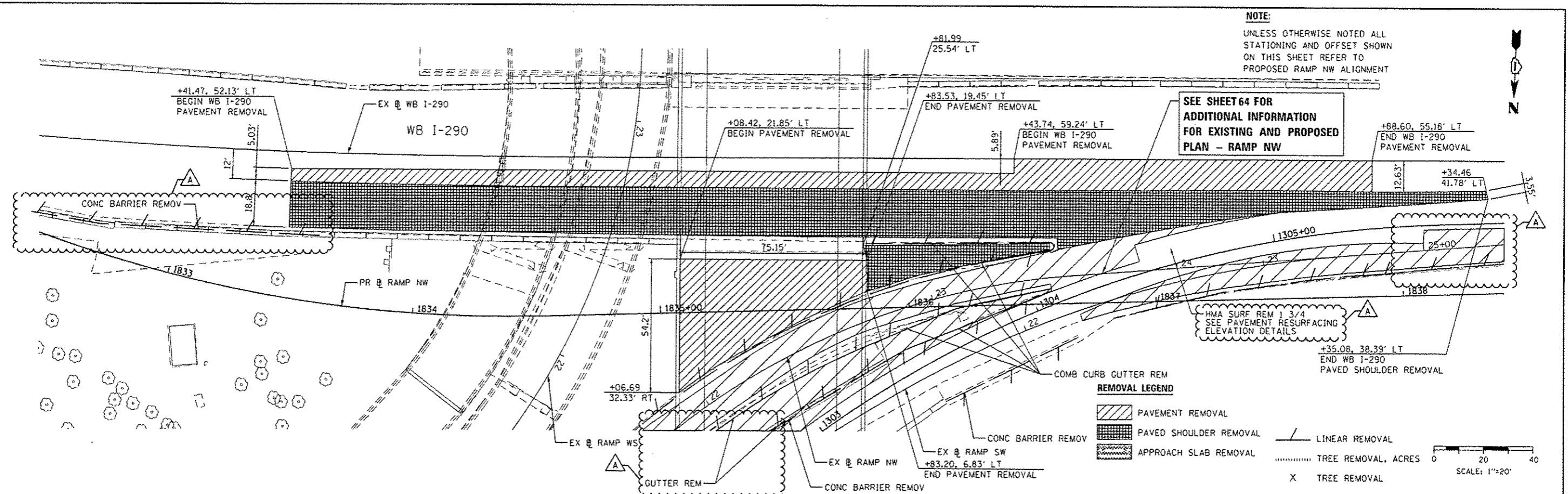


NOTE:
UNLESS OTHERWISE NOTED ALL
STATIONING AND OFFSET SHOWN
ON THIS SHEET REFER TO
PROPOSED RAMP NW ALIGNMENT



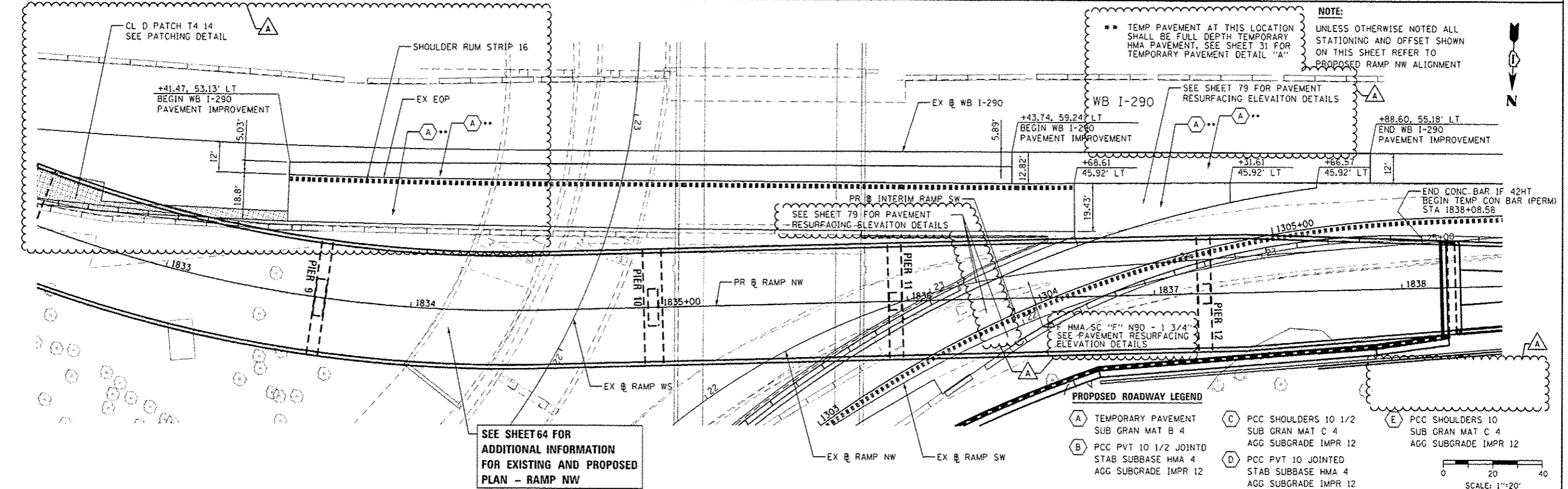
**SEE SHEET 64 FOR
ADDITIONAL INFORMATION
FOR EXISTING AND PROPOSED
PLAN - RAMP NW**

REMOVAL LEGEND

- PAVEMENT REMOVAL
- PAVED SHOULDER REMOVAL
- APPROACH SLAB REMOVAL
- LINEAR REMOVAL
- TREE REMOVAL, ACRES
- TREE REMOVAL

SCALE: 1"=20'

NOTE:
UNLESS OTHERWISE NOTED ALL
STATIONING AND OFFSET SHOWN
ON THIS SHEET REFER TO
PROPOSED RAMP NW ALIGNMENT



**SEE SHEET 64 FOR
ADDITIONAL INFORMATION
FOR EXISTING AND PROPOSED
PLAN - RAMP NW**

PROPOSED ROADWAY LEGEND

- TEMPORARY PAVEMENT SUB GRAN MAT B 4
- PCC PVT 10 1/2 JOINTD STAB SUBBASE HMA 4 AGG SUBGRADE IMPR 12
- PCC SHOULDERS 10 1/2 SUB GRAN MAT C 4 AGG SUBGRADE IMPR 12
- PCC PVT 10 JOINTED STAB SUBBASE HMA 4 AGG SUBGRADE IMPR 12
- PCC SHOULDERS 10 SUB GRAN MAT C 4 AGG SUBGRADE IMPR 12

SCALE: 1"=20'



0164W28-SH1-PLAN-09.dgn
USER NAME: pmsano
PLOT SCALE: 1/4"=100'
PLOT DATE: 5/26/2014

DESIGNED - OPS
DRAWN - NSA
CHECKED - KCF
DATE - 04/28/14

REVISED - 5/27/2014
REVISED -
REVISED -
REVISED -

STATE OF ILLINOIS
DEPARTMENT OF TRANSPORTATION

ROADWAY PLAN
WB I-290 IMPROVEMENT

SCALE: 1"=20' SHEET 1 OF 1 SHEETS STA. TO STA.

F.A.I. RTE.	SECTION	COUNTY	TOTAL SHEETS	SHEET NO.
90/94/290	2013-010R	COOK	747	72
CONTRACT NO. 60W28			ILLINOIS FED. AID PROJECT	