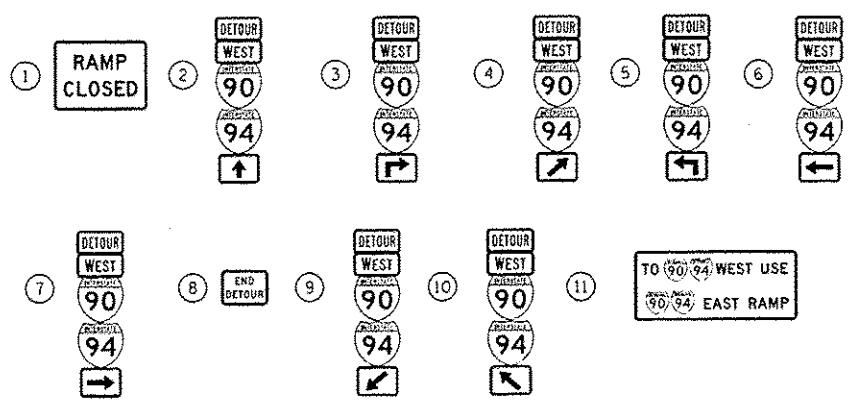
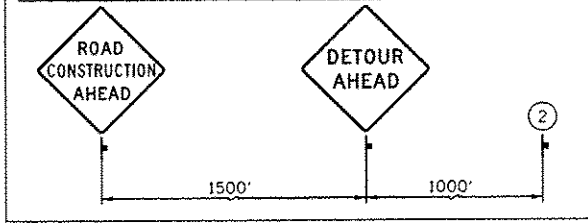


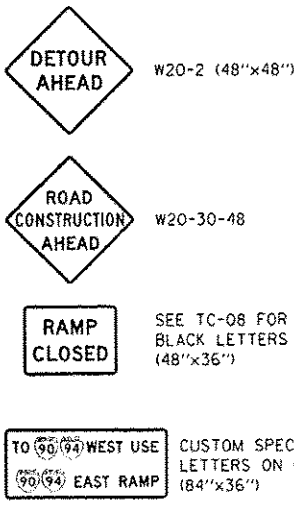
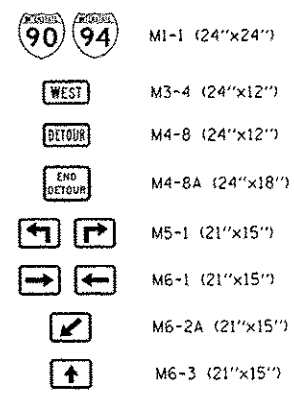
SIGN ASSEMBLIES

ADVANCE INFORMATION SIGNS



DETOUR SIGNS TYPE & SIZE

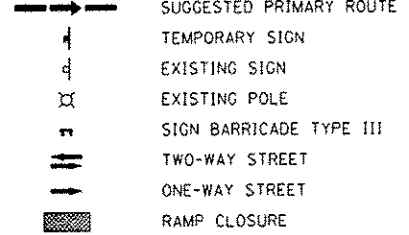
(ALL SIGN COLORS SHALL BE ACCORDING TO THE LATEST EDITION OF THE MUTCD)



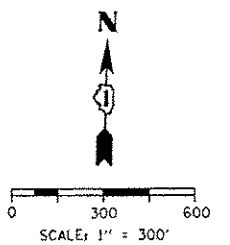
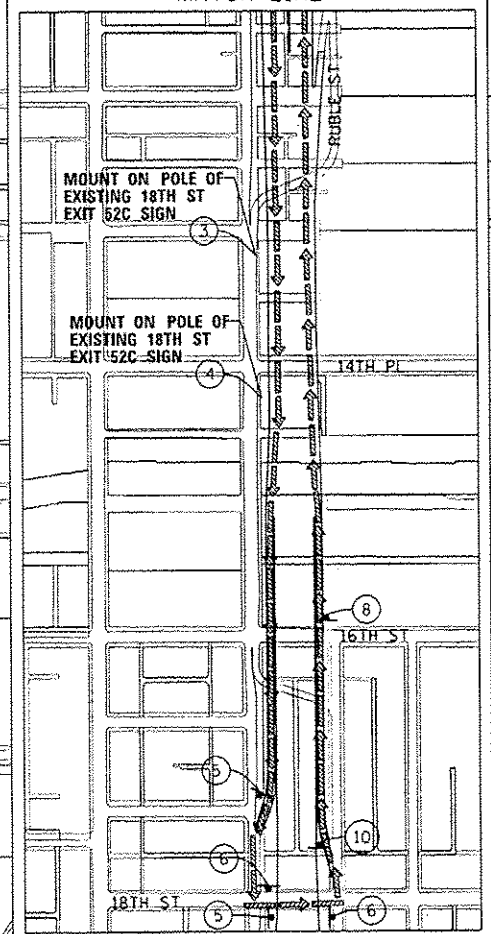
TRAFFIC CONTROL NOTES

1. PRIMARY DETOUR ROUTE: TAKE RAMP ES TO 18TH ST. EXIT AND RETURN NORTH VIA I-90/94 WB.
2. DETOUR SIGNING MUST BE INSTALLED PRIOR TO CLOSURE RAMP EN.
3. RAMP CLOSURE SHALL FOLLOW THE LATEST VERSION OF THE IDOT HIGHWAY STANDARDS AND DISTRICT 1 STANDARD DETAIL TC-08. SEE SUGGESTED STAGES OF CONSTRUCTION AND TRAFFIC CONTROL PLANS FOR ADDITIONAL INFORMATION.
4. PLACEMENT AND SPACING OF SIGNS AND BARRICADES SHALL BE IN ACCORDANCE WITH IDOT DISTRICT 1 STANDARD DETAIL TC-08 AND TC-21.
5. ALL DETOUR SIGNS SHALL HAVE AN ORANGE BACKGROUND WITH BLACK LETTERS.
6. THE CONTRACTOR IS RESPONSIBLE FOR COORDINATION WITH OTHER ROAD WORK IN THE AREA.
7. THE COST OF SUPPLYING, ERECTING AND MAINTAINING BARRICADES, WARNING LIGHTS AND STANDARD SIGNS ALONG ALL DETOUR ROUTES SHALL BE INCLUDED IN THE CONTRACT COST OF TRAFFIC CONTROL AND PROTECTION (SPECIAL).
8. THIS DETOUR CAN ONLY BE USED DURING GIRDER ERECTION. REFER TO THE SPECIAL PROVISION "GIRDER ERECTION INFORMATION AND RESTRICTIONS" FOR ADDITIONAL INFORMATION.

LEGEND



INSET "A" MATCH LINE



D:\60428\28-ent-Detour-12.dgn
 USER NAME = b-casj
 PLOT SCALE = 600.0000 1/1
 PLOT DATE = 5/27/2014

DESIGNED - AFC	REVISED - 05/27/2014
DRAWN - NSA	REVISED -
CHECKED - KCF	REVISED -
DATE - 4/28/2014	REVISED -

**STATE OF ILLINOIS
 DEPARTMENT OF TRANSPORTATION**

**DETOUR PLAN
 RAMP EN (GIRDER ERECTION)**
 SCALE: 1" = 300' SHEET 1 OF 1 SHEETS STA. TO STA.

F.A.I. RTE. 90/94/290	SECTION 2013-010R	COUNTY COOK	TOTAL SHEETS 747	SHEET NO. 90G
ILLINOIS FED. AID PROJECT			CONTRACT NO. 60W28	