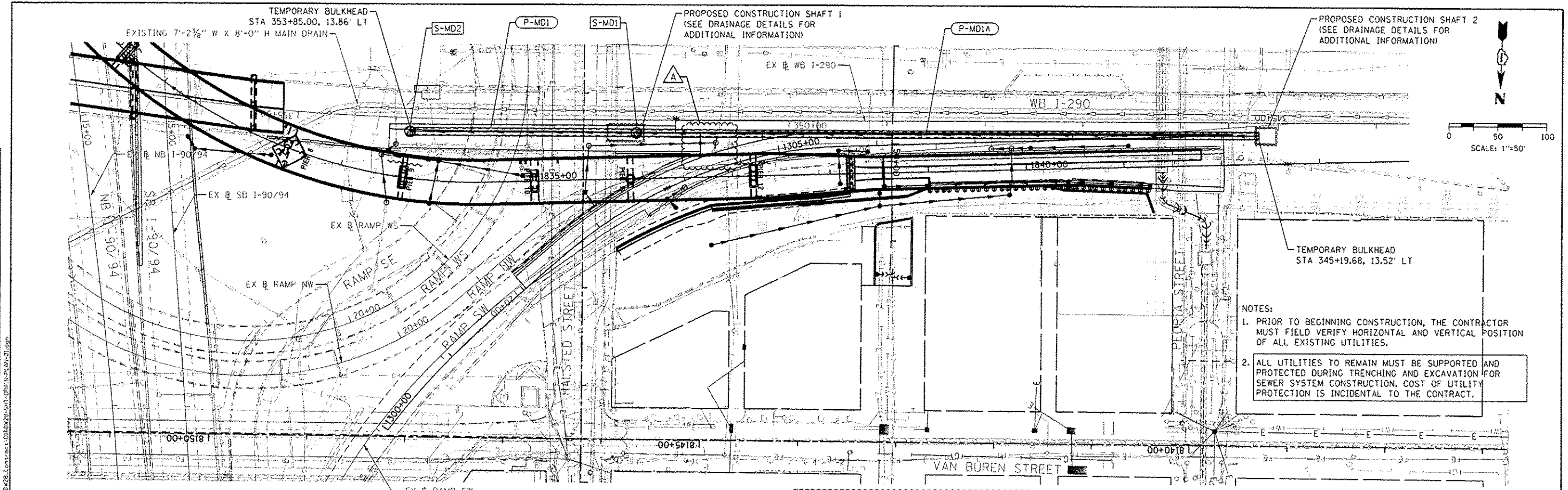


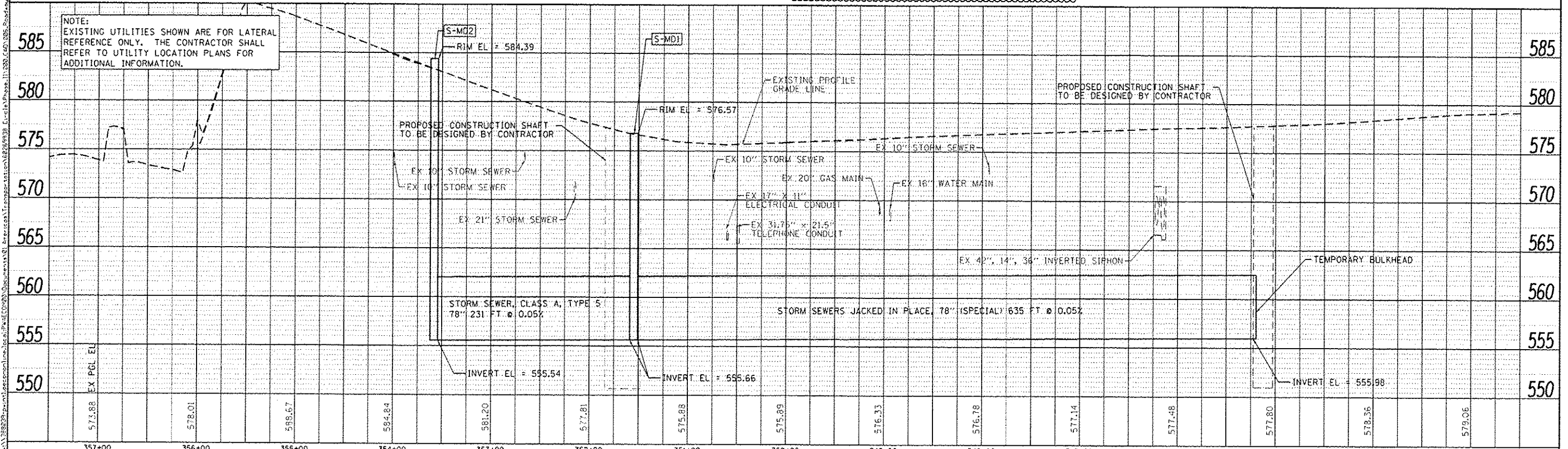
DATE	
BY	
PROJECT	
PLANNING	
DESIGN	
CONSTRUCTION	
OPERATION	
MAINTENANCE	
REVISIONS	
NO.	
DATE	
BY	
DESCRIPTION	

DATE	
BY	
PROJECT	
PLANNING	
DESIGN	
CONSTRUCTION	
OPERATION	
MAINTENANCE	
REVISIONS	
NO.	
DATE	
BY	
DESCRIPTION	



NOTES:

1. PRIOR TO BEGINNING CONSTRUCTION, THE CONTRACTOR MUST FIELD VERIFY HORIZONTAL AND VERTICAL POSITION OF ALL EXISTING UTILITIES.
2. ALL UTILITIES TO REMAIN MUST BE SUPPORTED AND PROTECTED DURING TRENCHING AND EXCAVATION FOR SEWER SYSTEM CONSTRUCTION. COST OF UTILITY PROTECTION IS INCIDENTAL TO THE CONTRACT.



<p>303 EAST WACKER DRIVE, SUITE 1400 CHICAGO, IL 60601-2776 PHONE: (312) 373-1700 FAX: (312) 373-8800</p>	USER NAME: schmanski PLOT SCALE: 1/8"=1'-0" PLOT DATE: 5/27/2014	DESIGNED - DWS DRAWN - DWS CHECKED - EBY DATE - 04/28/14	REVISED - 5/27/2014 REVISED - REVISED - REVISED -	STATE OF ILLINOIS DEPARTMENT OF TRANSPORTATION	DRAINAGE AND UTILITY PLAN AND PROFILE 78" MAIN DRAIN AT WB I-290	F.A.I. RTE.: 90/94/290 SECTION: 2013-010R COUNTY: COOK CONTRACT NO.: 60W28	TOTAL SHEETS: 747 SHEET NO.: 231
	SCALE: 1"=50' SHEET 1 OF 1 SHEETS STA. TO STA.		ILLINOIS FED. AID PROJECT				