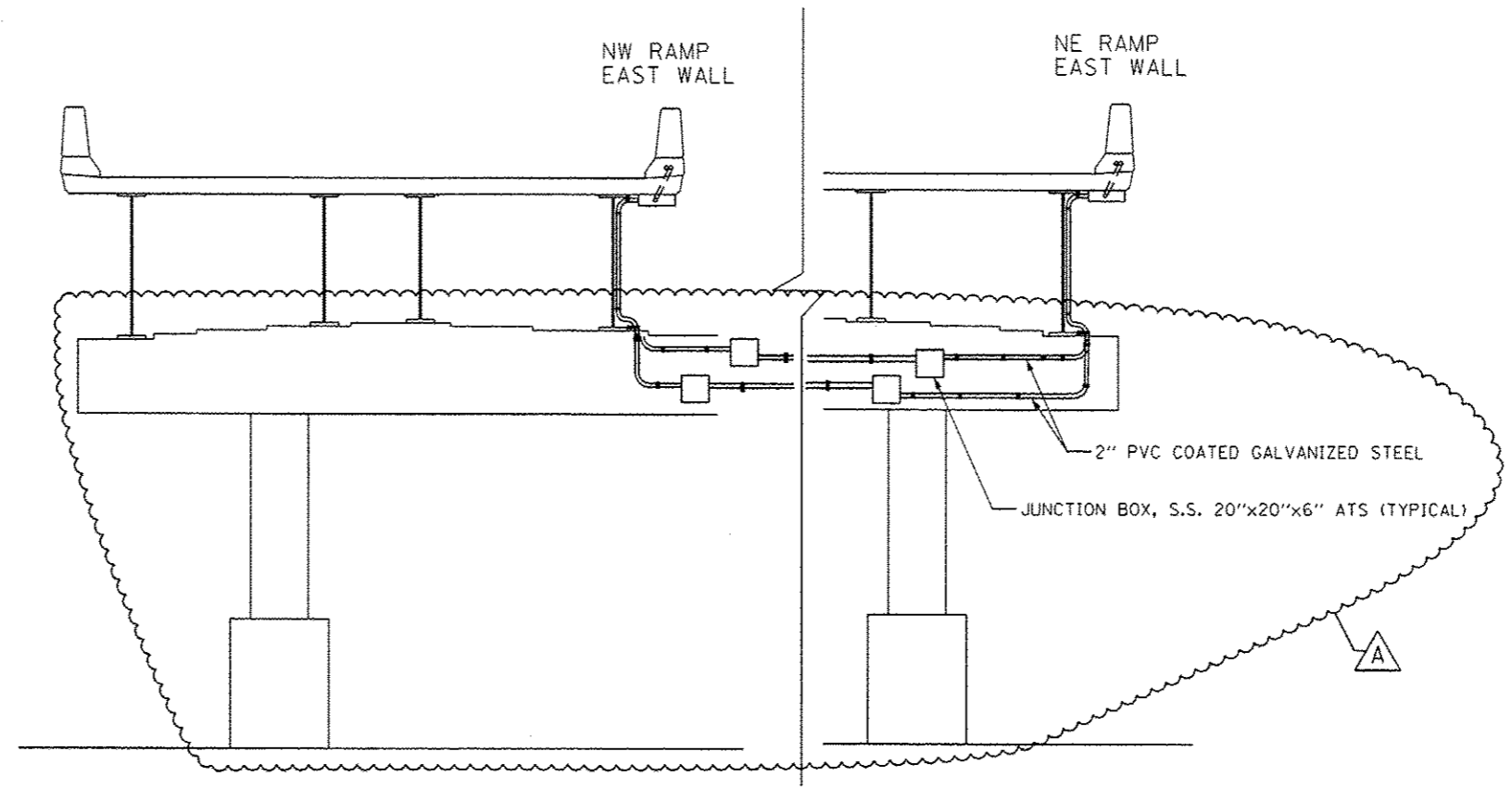


FILE PATH : p:\1\388029\p\int\lecomon\ra\local\p\AEC\0420\Documents\Illinois\Transportation\60W28\Sheets\60W28-9B-115-998



SOUTH FACE OF PIER 4
STRUCTURE NO. 016-1705



| | | |
|-------------------------------|-----------------|-----------------------|
| 0160W28-9B-115-998 | DESIGNED - GWS | REVISED - A 5/27/2014 |
| USER NAME : mgbrac | DRAWN - CAM | REVISED - |
| PLOT SCALE : 617.1428 ' / in. | CHECKED - JDC | REVISED - |
| PLOT DATE : 5/21/2014 | DATE - 04/28/14 | REVISED - |

STATE OF ILLINOIS
DEPARTMENT OF TRANSPORTATION

PIER TRANSITION DETAIL
SCALE: NO SCALE SHEET 9B OF 9 SHEETS STA. TO STA.

| F.A.I. RTE. | SECTION | COUNTY | TOTAL SHEETS | SHEET NO. |
|---------------------------|-----------|--------|--------------|--------------------|
| 90/94/290 | 2013-010R | COOK | 747 | 316B |
| | | | | CONTRACT NO. 60W28 |
| ILLINOIS FED. AID PROJECT | | | | |