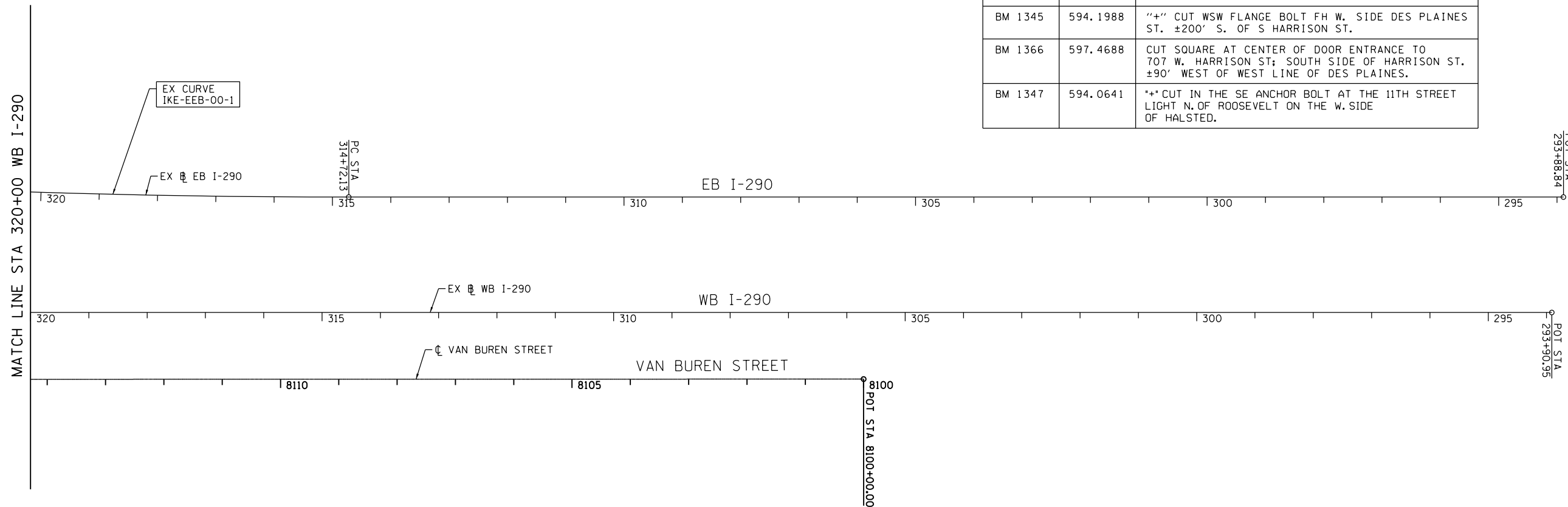
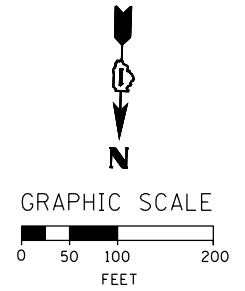


BENCHMARKS		
MONUMENT	ELEVATION	DESCRIPTION
BM 1100	582.6782	SET "X" @ $\phi$ OF EAST PIER @ $\phi$ OF VAN BUREN ST.
BM 1140	579.3332	SET "X" ON WESTERLY JAYWALL OF I-90 @ $\phi$ OF VAN BUREN ST.
BM 1141	575.1320	SET "X" ON WESTERLY JAYWALL OF I-90 @ $\phi$ OF OUTBOUND I-290 OVERPASS.
BM 1142	575.9003	SET "X" ON WESTERLY JAYWALL OF I-90 @ $\phi$ OF INBOUND I-290 OVERPASS.
BM 1143	580.1100	SET "X" ON WESTERLY JAYWALL OF I-90 $\pm$ 35' SOUTH OF HARRISON ST. OVERPASS.
BM 1144	585.7601	CHISEL "X" ON OVERHEAD SIGN BOLT, SIGN #D1, W. SIDE OF HARRISON. (CENTER OF 3 EAST BOLTS)
BM 1145	586.1391	CHISEL "X" ON WESTERLY BOLT OF H.M.L.P. $\phi$ OF I-90 $\pm$ 200' S. OF PUMP/LIFT STATION.
BM 1146	582.9574	SET "X" ON WESTERLY JAYWALL OF I-90 WESTBOUND $\pm$ OPPOSITE SIGN #D4
BM 1147	579.4454	SET "X" ON WESTERLY JAYWALL OF ACCIDENT INVESTIGATION SITE $\pm$ 35' N. OF E. I-90/94 SIGN.
BM 1345	594.1988	"+" CUT WSW FLANGE BOLT FH W. SIDE DES PLAINES ST. $\pm$ 200' S. OF S HARRISON ST.
BM 1366	597.4688	CUT SQUARE AT CENTER OF DOOR ENTRANCE TO 707 W. HARRISON ST; SOUTH SIDE OF HARRISON ST. $\pm$ 90' WEST OF WEST LINE OF DES PLAINES.
BM 1347	594.0641	"+" CUT IN THE SE ANCHOR BOLT AT THE 11TH STREET LIGHT N. OF ROOSEVELT ON THE W. SIDE OF HALSTED.



FILE PATH = C:\Users\pmsarno\Desktop\print\26-14\016028-Sht-ATB-07.dgn



D160W28-Sht-ATB-07.dgn  
 USER NAME = pmsarno  
 PLOT SCALE = 200.0000' / in.  
 PLOT DATE = 4/26/2014

DESIGNED -	KAM	REVISED -	
DRAWN -	NSA/OPS	REVISED -	
CHECKED -	KCF	REVISED -	
DATE -	04/28/14	REVISED -	

STATE OF ILLINOIS  
 DEPARTMENT OF TRANSPORTATION

ALIGNMENT, TIES AND BENCHMARKS

SCALE: 1"=100' SHEET 7 OF 12 SHEETS STA. TO STA.

F.A.I. RTE.	SECTION	COUNTY	TOTAL SHEETS	SHEET NO.
90/94/290	2013-010R	COOK	747	53
CONTRACT NO. 60W28			ILLINOIS FED. AID PROJECT	