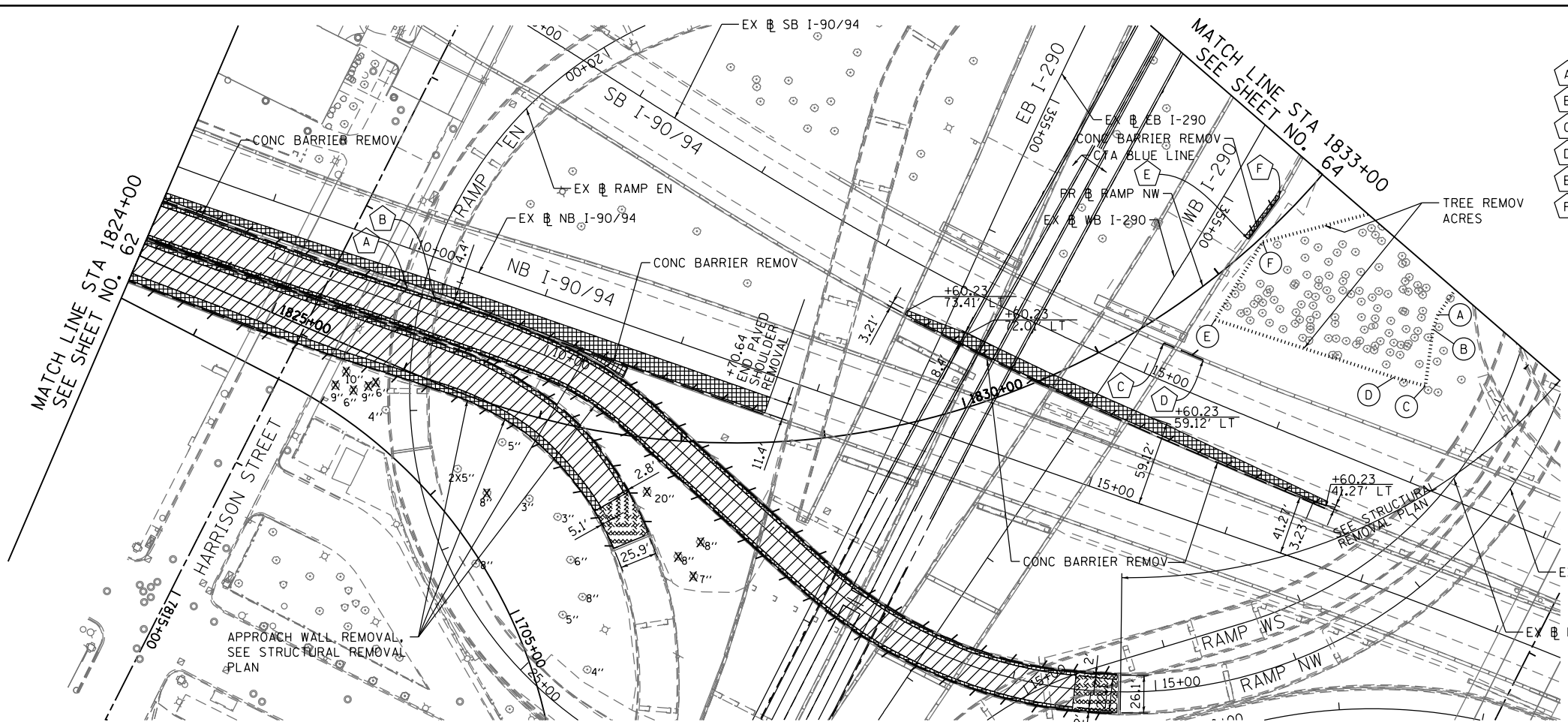
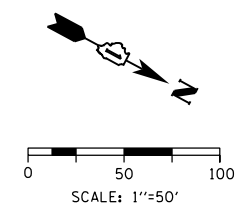


FILE PATH = p:\388035\part1\escomon\line\local\p\AEC\DWG\Documents\01_Americas\Transportation\62629938_Circle\Phase_1\160W28-SHT-PLAN-04.dgn



- CONCRETE BARRIER REMOVAL
- (A) - STA 1825+79.77, 52.38' LT
 - (B) - STA 1825+99.70, 54.43' LT
 - (C) - STA 1831+41.93, 16.90' RT
 - (D) - STA 1831+57.78, 41.82' RT
 - (E) - STA 1832+31.58, 5.15' LT
 - (F) - STA 1832+67.75, 11.32' LT



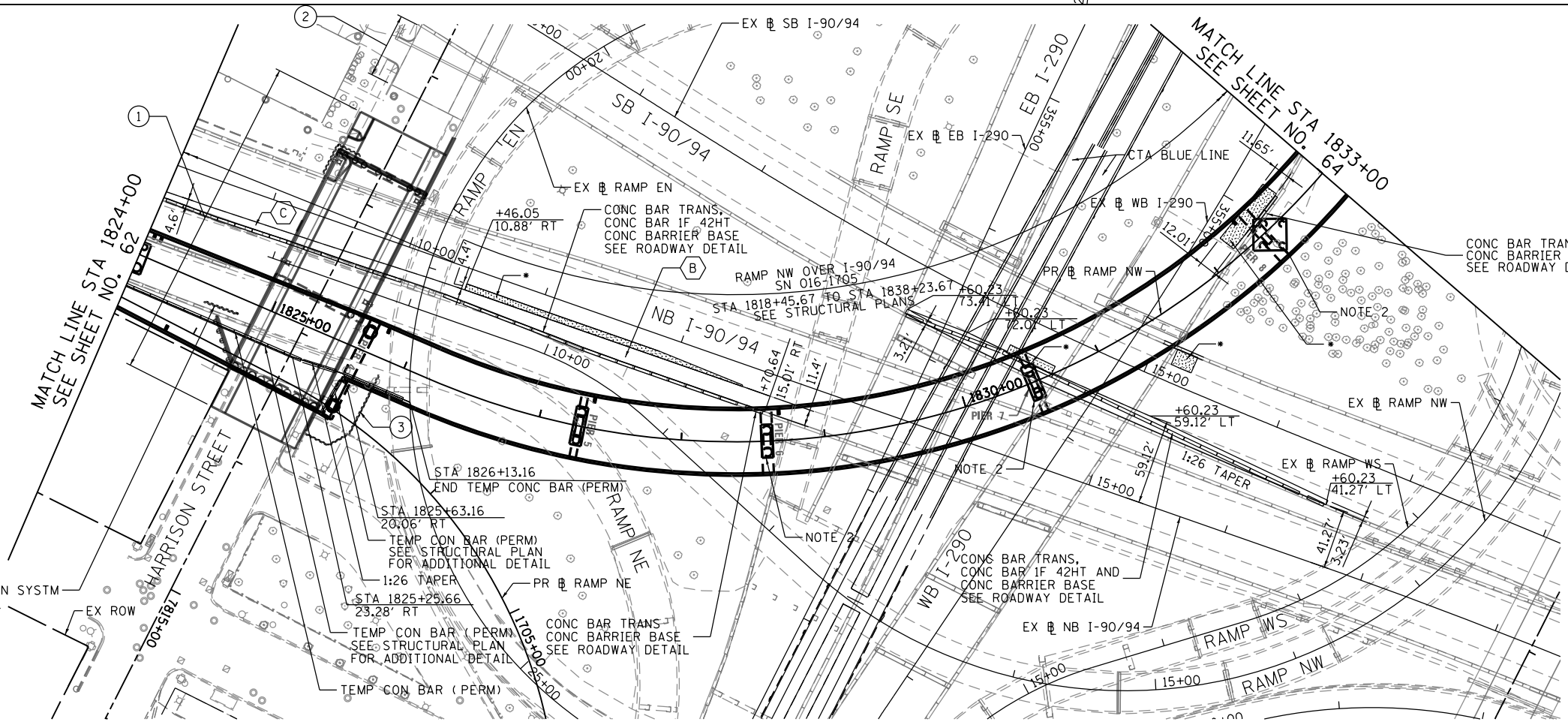
REMOVAL LEGEND

- PAVEMENT REMOVAL
- PAVED SHOULDER REMOVAL
- APPROACH SLAB REMOVAL
- LINEAR REMOVAL
- TREE REMOVAL, ACRES
- TREE REMOVAL

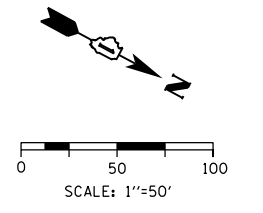
TREE REMOVAL, ACRES

POINT	STATION	OFFSET	LT/RT
(A)	1832+82.91	124.76'	RT
(B)	1832+75.00	129.02'	RT
(C)	1832+50.00	153.03'	RT
(D)	1832+40.67	133.78'	RT
(E)	1831+79.21	23.64'	RT
(F)	1832+37.71	2.91'	RT

EXISTING



- ① HARRISON ST (EAST) OVER NB I-90/94
SN 016-1711
CONTRACT 60W71 (BY OTHERS)
- ② HARRISON ST (WEST) OVER SB I-90/94
SN 016-1713
CONTRACT 60W26 (BY OTHERS)
- ③ SOIL RETENTION SYSTEM INSTALLED IN
CONTRACT 60W71 (BY OTHERS)



NOTE:

- 1. SEE SHTS 66 TO 69 FOR PR ROADWAY PROFILES
- 2. FOR BRACED EXCAVATION, SEE BRACED EXCAVATION LIMIT PLAN AND SPECIAL PROVISION

PROPOSED ROADWAY LEGEND

- (A) TEMPORARY PAVEMENT SUB GRAN MAT B 4
- (B) PCC PVT 10 1/2 JOINTD STAB SUBBASE HMA 4 AGG SUBGRADE IMPR 12
- (C) PCC SHOULDERS 10 1/2 SUB GRAN MAT C 4 AGG SUBGRADE IMPR 12
- (D) PCC PVT 10 JOINTED STAB SUBBASE HMA 4 AGG SUBGRADE IMPR 12
- (E) PCC SHOULDERS 10 SUB GRAN MAT C 4 AGG SUBGRADE IMPR 12

PROPOSED



D160W28-SHT-PLAN-04.dgn
 USER NAME = pimsarno
 PLOT SCALE = 100.0000' / in.
 PLOT DATE = 4/28/2014

DESIGNED - KAM
 DRAWN - NSA/OPS
 CHECKED - KCF
 DATE - 04/28/14

REVISED -
 REVISED -
 REVISED -
 REVISED -

**STATE OF ILLINOIS
 DEPARTMENT OF TRANSPORTATION**

**EXISTING AND PROPOSED PLAN
 RAMP NW**

SCALE: 1"=50' SHEET 4 OF 6 SHEETS STA. 1824+00 TO STA. 1833+00

F.A.I. RTE.	SECTION	COUNTY	TOTAL SHEETS	SHEET NO.
90/94/290	2013-010R	COOK	747	63
CONTRACT NO. 60W28				
ILLINOIS FED. AID PROJECT				