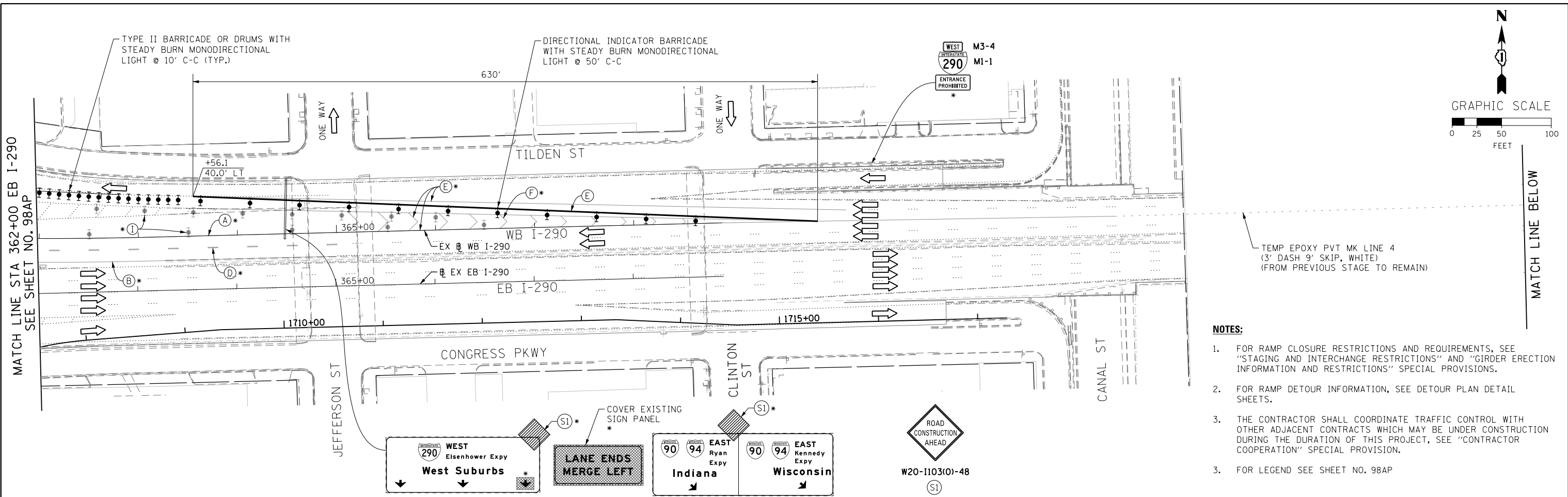
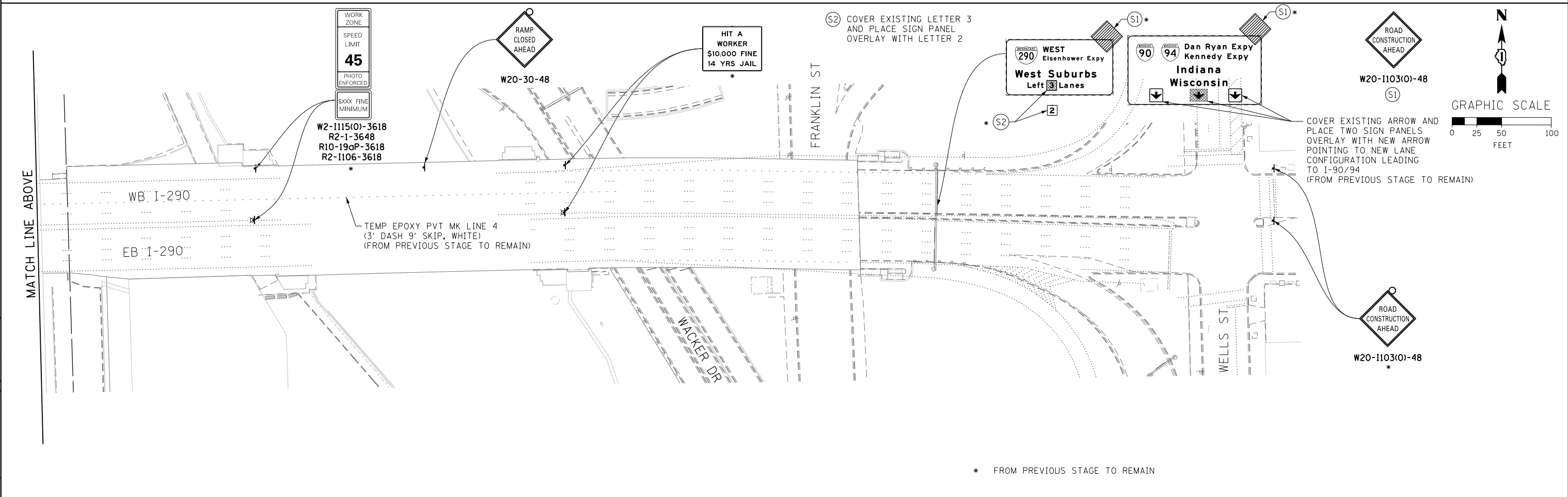


MATCH LINE STA 362+00 EB I-290  
SEE SHEET NO. 98AP



- NOTES:**
- FOR RAMP CLOSURE RESTRICTIONS AND REQUIREMENTS, SEE "STAGING AND INTERCHANGE RESTRICTIONS" AND "GIRDER ERECTION INFORMATION AND RESTRICTIONS" SPECIAL PROVISIONS.
  - FOR RAMP DETOUR INFORMATION, SEE DETOUR PLAN DETAIL SHEETS.
  - THE CONTRACTOR SHALL COORDINATE TRAFFIC CONTROL WITH OTHER ADJACENT CONTRACTS WHICH MAY BE UNDER CONSTRUCTION DURING THE DURATION OF THIS PROJECT, SEE "CONTRACTOR COOPERATION" SPECIAL PROVISION.
  - FOR LEGEND SEE SHEET NO. 98AP



\* FROM PREVIOUS STAGE TO REMAIN

FILE PATH = C:\Projectbase\160W28-Sht-Staging3-RampWS-CL-02.dgn



D160W28-Sht-Staging3-RampWS-CL-02.dgn  
USER NAME = auyeungh  
PLOT SCALE = 50.0000' / in.  
PLOT DATE = 4/28/2014

DESIGNED - OPS	REVISED -
DRAWN - PHP	REVISED -
CHECKED - KCF	REVISED -
DATE - 04/28/14	REVISED -

STATE OF ILLINOIS  
DEPARTMENT OF TRANSPORTATION

**SUGGESTED STAGES OF CONSTRUCTION AND TRAFFIC CONTROL PLAN**  
**MAINLINE STAGING 3A-3C - RAMP WS CLOSURE**  
SCALE: 1" = 50' SHEET 2 OF 2 SHEETS STA. TO STA.

F.A.I. RTE. 90/94/290	SECTION 2013-010R	COUNTY COOK	TOTAL SHEETS 747	SHEET NO. 60W28
ILLINOIS FED. AID PROJECT			CONTRACT NO. 60W28	