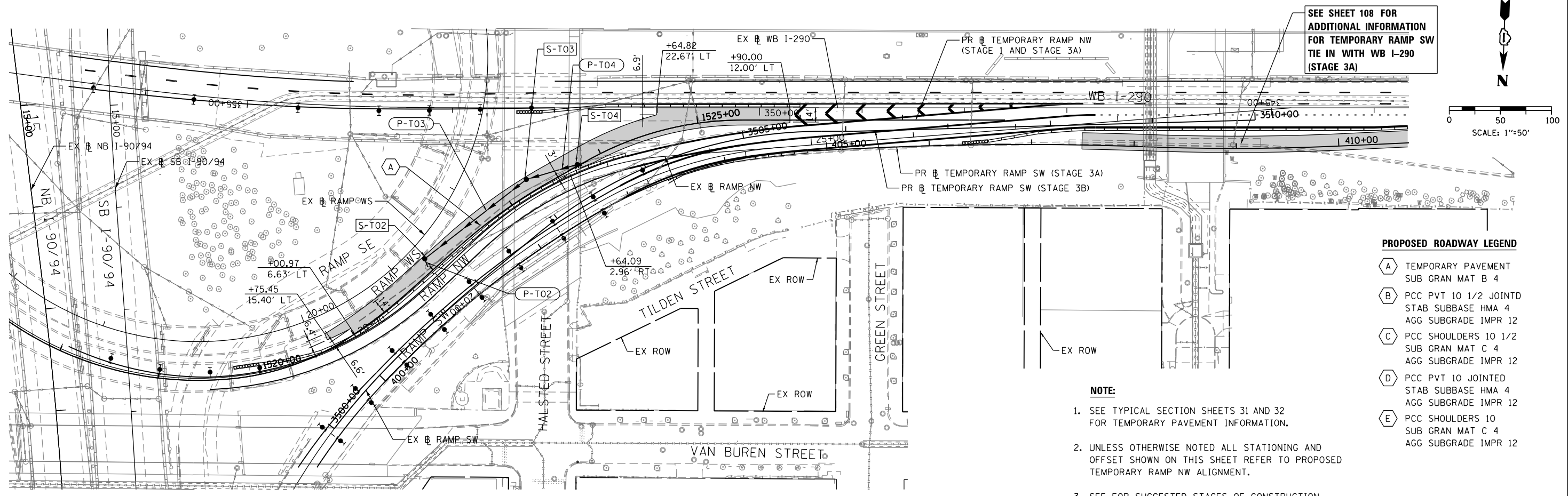


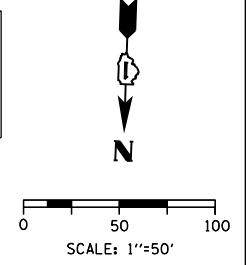
PLAN	SURVEYED	DATE
	PLOTTED	
	ALIGNED	
	CHECKED	
	FILED	
	NO.	
	BY	

PROFILE	SURVEYED	DATE
	PLOTTED	
	GRADES	
	CHECKED	
	STRUCTURE	
	NOTATIONS	
	CHKD	
	NO.	
	BY	

FILE PATH = p:\388035-pur\1\escomon\local\PAE\CD\000\Documents\01\Americas\Tranporation\62629938_Circle\Phase\1\000_CAD\005_Roadway\Sheets\60W28-SHT-STAGING-PLAN-02.dgn



SEE SHEET 108 FOR
ADDITIONAL INFORMATION
FOR TEMPORARY RAMP SW
TIE IN WITH WB I-290
(STAGE 3A)

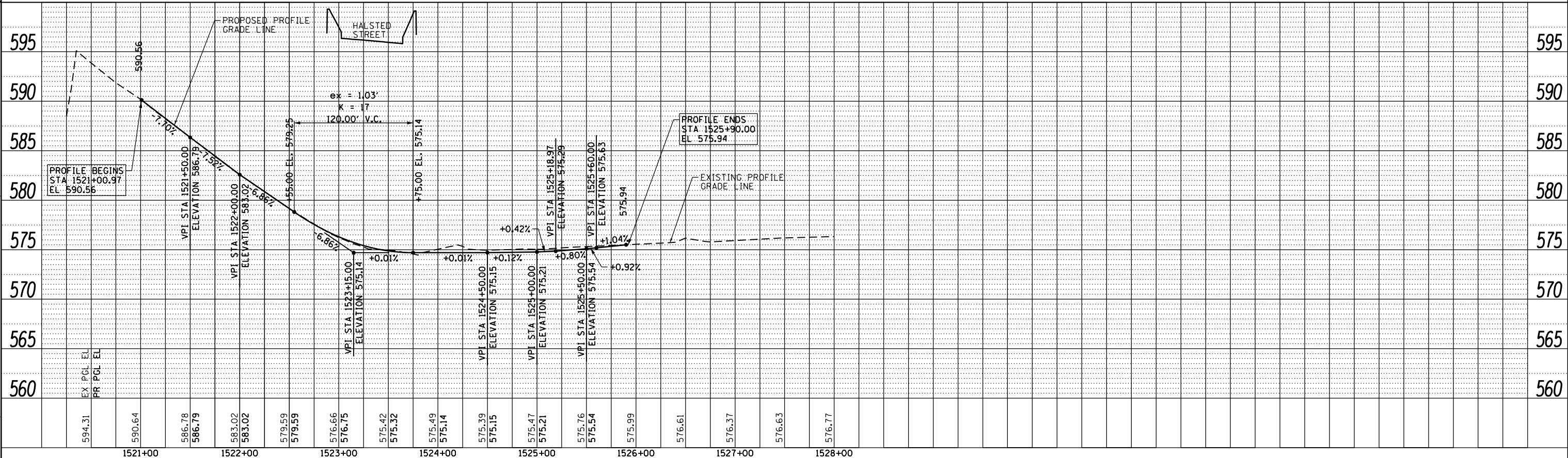


PROPOSED ROADWAY LEGEND

- (A) TEMPORARY PAVEMENT
SUB GRAN MAT B 4
- (B) PCC PVT 10 1/2 JOINTED
STAB SUBBASE HMA 4
AGG SUBGRADE IMPR 12
- (C) PCC SHOULDERS 10 1/2
SUB GRAN MAT C 4
AGG SUBGRADE IMPR 12
- (D) PCC PVT 10 JOINTED
STAB SUBBASE HMA 4
AGG SUBGRADE IMPR 12
- (E) PCC SHOULDERS 10
SUB GRAN MAT C 4
AGG SUBGRADE IMPR 12

NOTE:

1. SEE TYPICAL SECTION SHEETS 31 AND 32 FOR TEMPORARY PAVEMENT INFORMATION.
2. UNLESS OTHERWISE NOTED ALL STATIONING AND OFFSET SHOWN ON THIS SHEET REFER TO PROPOSED TEMPORARY RAMP NW ALIGNMENT.
3. SEE FOR SUGGESTED STAGES OF CONSTRUCTION AND TRAFFIC CONTROL PLAN - MAINLINE STAGING 3A FOR TRAFFIC CONTROL DETAILS.



D160W28-SHT-STAGING-PLAN-02.dgn
USER NAME = pimsarno
PLOT SCALE = 100.0000' / in.
PLOT DATE = 4/27/2014

DESIGNED - KAM
DRAWN - NSA/OPS
CHECKED - KCF
DATE - 04/28/14

REVISED -
REVISED -
REVISED -
REVISED -

STATE OF ILLINOIS
DEPARTMENT OF TRANSPORTATION

PROPOSED ROADWAY AND DRAINAGE PLAN AND PROFILE
TEMPORARY RAMP NW TIE IN AT WB I-290 (STAGE 3A)
SCALE: 1"=50' SHEET 1 OF 1 SHEETS STA. 1521+00.97 TO STA. 1525+90.00

F.A.I. RTE.	SECTION	COUNTY	TOTAL SHEETS	SHEET NO.
90/94/290	2013-010R	COOK	747	107
CONTRACT NO. 60W28			ILLINOIS FED. AID PROJECT	