

OH4 EXISTING OVERHEAD SIGNS TO REMAIN SEE CONTRACTS 60W26 AND 60W29 FOR SIGN DETAIL

OH5 EXISTING OVERHEAD SIGNS TO REMAIN SEE CONTRACTS 60W26 AND 60W29 FOR SIGN DETAIL

**PROPOSED TEMP PAVEMENT MARKINGS AND TRAFFIC CONTROL DEVICES**

- (A) TEMP EPOXY PVT MK LINE 4 (SOLID WHITE)
- (B) TEMP EPOXY PVT MK LINE 4 (SOLID YELLOW)
- (C) TEMP EPOXY PVT MK LINE 4 (2' DASH 6' SKIP, WHITE)
- (D) TEMP EPOXY PVT MK LINE 5 (10' DASH 30' SKIP, WHITE)
- (E) TEMP EPOXY PVT MK LINE 8 (SOLID WHITE)
- (F) TEMP EPOXY PVT MK LINE 12 (WHITE CHEVRONS @ 45°, 30' SPACING) (TYP)
- (G) TEMP CONC BARRIER @ 12:1 ON TAPERS UNLESS OTHERWISE NOTED
- (H) IMP ATTN TEMP FRN TL3
- (I) TYPE II BARRICADE OR DRUMS WITH STEADY BURN MONODIRECTIONAL LIGHT @ 50' C-C (TYP) ON TAPERS AND RAMP @ 100' C-C (TYP) ON TANGENTS
- (J) DIRECTIONAL INDICATOR BARRICADE WITH STEADY BURN MONODIRECTIONAL LIGHT @ 50' C-C
- (K) REL TEMP CONC BARRIER @ 12:1 ON TAPERS UNLESS OTHERWISE NOTED
- (L) IMP ATTN REL FRN TL3

- LEGEND:**
- WORK ZONE
  - TEMPORARY CONCRETE BARRIER
  - TEMPORARY IMPACT ATTENUATOR
  - TEMPORARY SOIL RETENTION SYSTEM OR BRACED EXCAVATION
  - DIRECTION OF TRAFFIC FLOW
  - TYPE III BARRICADE
  - TYPE II BARRICADE OR DRUMS WITH STEADY BURN MONODIRECTIONAL LIGHT
  - DIRECTIONAL INDICATOR BARRICADE WITH STEADY BURN MONODIRECTIONAL LIGHT
  - SIGN
  - ARROW BOARD
  - REMOVAL LIMITS
  - TEMPORARY PAVEMENT

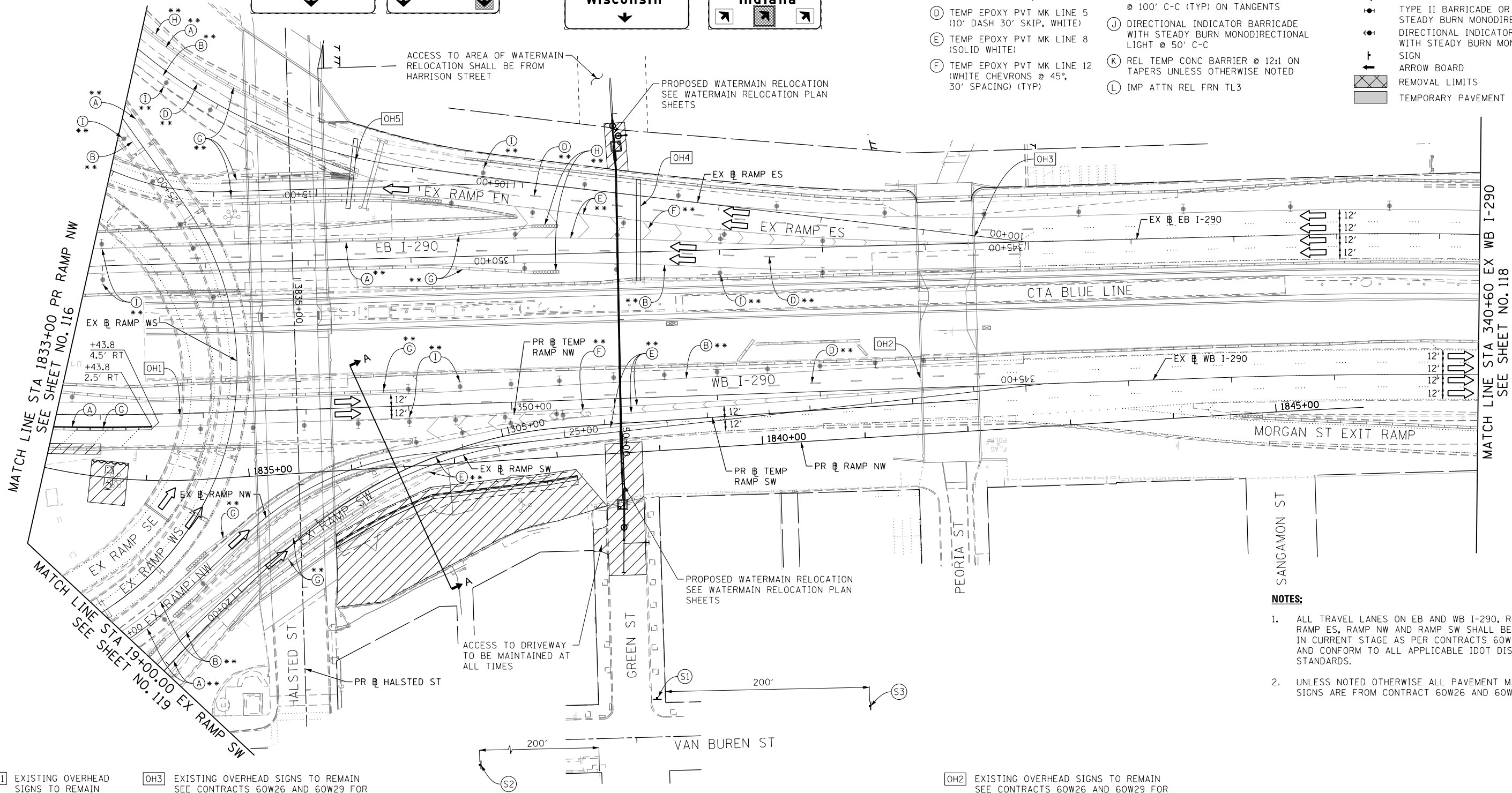
**Congress Pkwy Chicago Loop**

**Wisconsin** (90, 94 WEST Kennedy Expy)

**Indiana** (90, 94 EAST Ryan Expy)

**Wisconsin** (90, 94 WEST Kennedy Expy)

**Indiana** (90, 94 EAST Ryan Expy)



MATCH LINE STA 1833+00 PR RAMP NW SEE SHEET NO. 116

MATCH LINE STA 340+60 EX WB I-290 SEE SHEET NO. 118

- NOTES:**
- ALL TRAVEL LANES ON EB AND WB I-290, RAMP EN, RAMP ES, RAMP NW AND RAMP SW SHALL BE MAINTAINED IN CURRENT STAGE AS PER CONTRACTS 60W26 AND 60W29, AND CONFORM TO ALL APPLICABLE IDOT DISTRICT 1 STANDARDS.
  - UNLESS NOTED OTHERWISE ALL PAVEMENT MARKING AND SIGNS ARE FROM CONTRACT 60W26 AND 60W29.

OH1 EXISTING OVERHEAD SIGNS TO REMAIN SEE CONTRACT 60W26 FOR SIGN DETAIL

OH3 EXISTING OVERHEAD SIGNS TO REMAIN SEE CONTRACTS 60W26 AND 60W29 FOR SIGN DETAIL

OH2 EXISTING OVERHEAD SIGNS TO REMAIN SEE CONTRACTS 60W26 AND 60W29 FOR SIGN DETAIL

**EXIT TO MORGAN ST PROHIBITED**

**Wisconsin** (90, 94 WEST Kennedy Expy)

**Indiana** (90, 94 EAST Ryan Expy)

ROAD CONSTRUCTION AHEAD (W20-1103(O)-48)

ROAD CONSTRUCTION AHEAD (W20-1103(O)-48)

M6-1 21"x15"

M6-1 21"x15"

Exit 28B

**Ashland Ave Paulina St**

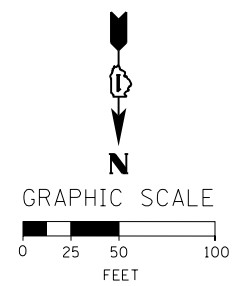
3/4 MILE

EXIT 29B

RAMP CLOSED

\*\* FROM CONTRACTS 60W26 AND 60W29 TO REMAIN

\*\*\* FROM CONTRACT 60W71 TO REMAIN



FILE PATH = CA\Project\60W28-sht-Staging\08.dgn



D160W28-sht-Staging\08.dgn  
 USER NAME = auyeung  
 PLOT SCALE = 50.0000' / in.  
 PLOT DATE = 4/28/2014

DESIGNED - OPS	REVISED -
DRAWN - PHP	REVISED -
CHECKED - KCF	REVISED -
DATE - 04/28/14	REVISED -

**STATE OF ILLINOIS DEPARTMENT OF TRANSPORTATION**

**SUGGESTED STAGES OF CONSTRUCTION AND TRAFFIC CONTROL PLAN**

**MAINLINE STAGING 1**

SCALE: 1" = 50' SHEET 8 OF 13 SHEETS STA. 1833+00 TO STA. 340+60

F.A.I. RTE.	SECTION	COUNTY	TOTAL SHEETS	SHEET NO.
90/94/290	2013-010R	COOK	747	117
CONTRACT NO. 60W28				
ILLINOIS FED. AID PROJECT				