

\* FROM PREVIOUS STAGE TO REMAIN

**PROPOSED TEMP PAVEMENT MARKINGS AND TRAFFIC CONTROL DEVICES**

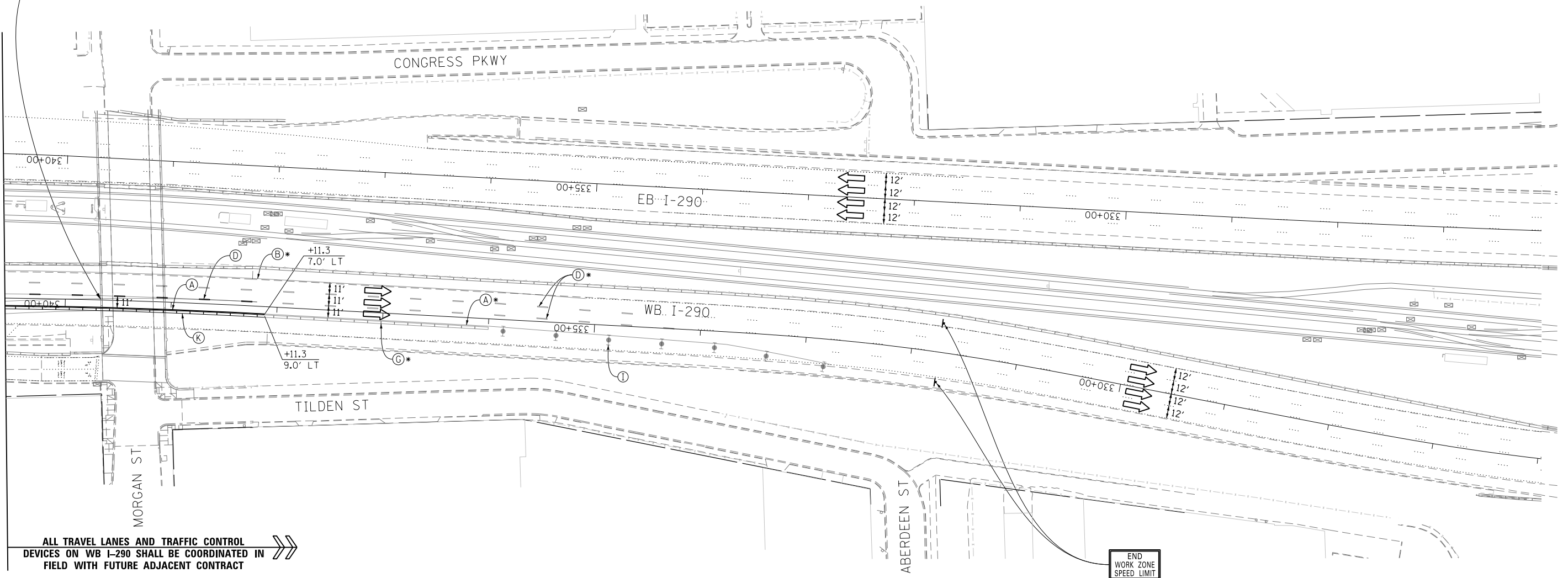
- (A) TEMP EPOXY PVT MK LINE 4 (SOLID WHITE)
- (B) TEMP EPOXY PVT MK LINE 4 (SOLID YELLOW)
- (C) TEMP EPOXY PVT MK LINE 4 (2' DASH 6' SKIP, WHITE)
- (D) TEMP EPOXY PVT MK LINE 5 (10' DASH 30' SKIP, WHITE)
- (E) TEMP EPOXY PVT MK LINE 8 (SOLID WHITE)
- (F) TEMP EPOXY PVT MK LINE 12 (WHITE CHEVRONS @ 45°, 30' SPACING) (TYP)
- (G) TEMP CONC BARRIER @ 12:1 ON TAPERS UNLESS OTHERWISE NOTED
- (H) IMP ATTN TEMP FRN TL3
- (I) TYPE II BARRICADE OR DRUMS WITH STEADY BURN MONODIRECTIONAL LIGHT @ 50' C-C (TYP) ON TAPERS AND RAMPS @ 100' C-C (TYP) ON TANGENTS
- (J) DIRECTIONAL INDICATOR BARRICADE WITH STEADY BURN MONODIRECTIONAL LIGHT @ 50' C-C
- (K) REL TEMP CONC BARRIER @ 12:1 ON TAPERS UNLESS OTHERWISE NOTED
- (L) IMP ATTN REL FRN TL3

**LEGEND:**

- WORK ZONE
- TEMPORARY CONCRETE BARRIER
- TEMPORARY IMPACT ATTENUATOR
- TEMPORARY SOIL RETENTION SYSTEM OR BRACED EXCAVATION
- DIRECTION OF TRAFFIC FLOW
- TYPE III BARRICADE
- TYPE II BARRICADE OR DRUMS WITH STEADY BURN MONODIRECTIONAL LIGHT
- DIRECTIONAL INDICATOR BARRICADE WITH STEADY BURN MONODIRECTIONAL SIGN
- ARROW BOARD
- REMOVAL LIMITS
- TEMPORARY PAVEMENT

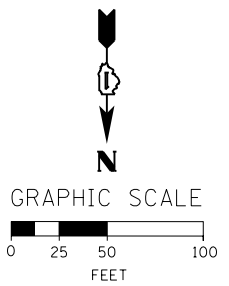
**EXIT 28B**  
Ashland Ave  
1/2 MILE

MATCH LINE STA 1847+00 PR RAMP NW  
SEE SHEET NO. 175



ALL TRAVEL LANES AND TRAFFIC CONTROL DEVICES ON WB I-290 SHALL BE COORDINATED IN FIELD WITH FUTURE ADJACENT CONTRACT

END WORK ZONE SPEED LIMIT  
G20-1103(1)-3660



FILE PATH = C:\Project\60W28-sht-Staging3C-09.dgn



D:\60W28-sht-Staging3C-09.dgn  
USER NAME = auyeungh  
PLOT SCALE = 50.0000' / in.  
PLOT DATE = 4/28/2014

DESIGNED - OPS	REVISED -
DRAWN - PHP	REVISED -
CHECKED - KCF	REVISED -
DATE - 04/28/14	REVISED -

**STATE OF ILLINOIS  
DEPARTMENT OF TRANSPORTATION**

**SUGGESTED STAGES OF CONSTRUCTION AND TRAFFIC CONTROL PLAN  
MAINLINE STAGING 3C**

SCALE: 1" = 50' SHEET 10 OF 14 SHEETS STA. 340+60 TO STA. 326+00

F.A.I. RTE.	SECTION	COUNTY	TOTAL SHEETS	SHEET NO.
90/94/290	2013-010R	COOK	747	176
CONTRACT NO. 60W28				
ILLINOIS FED. AID PROJECT				