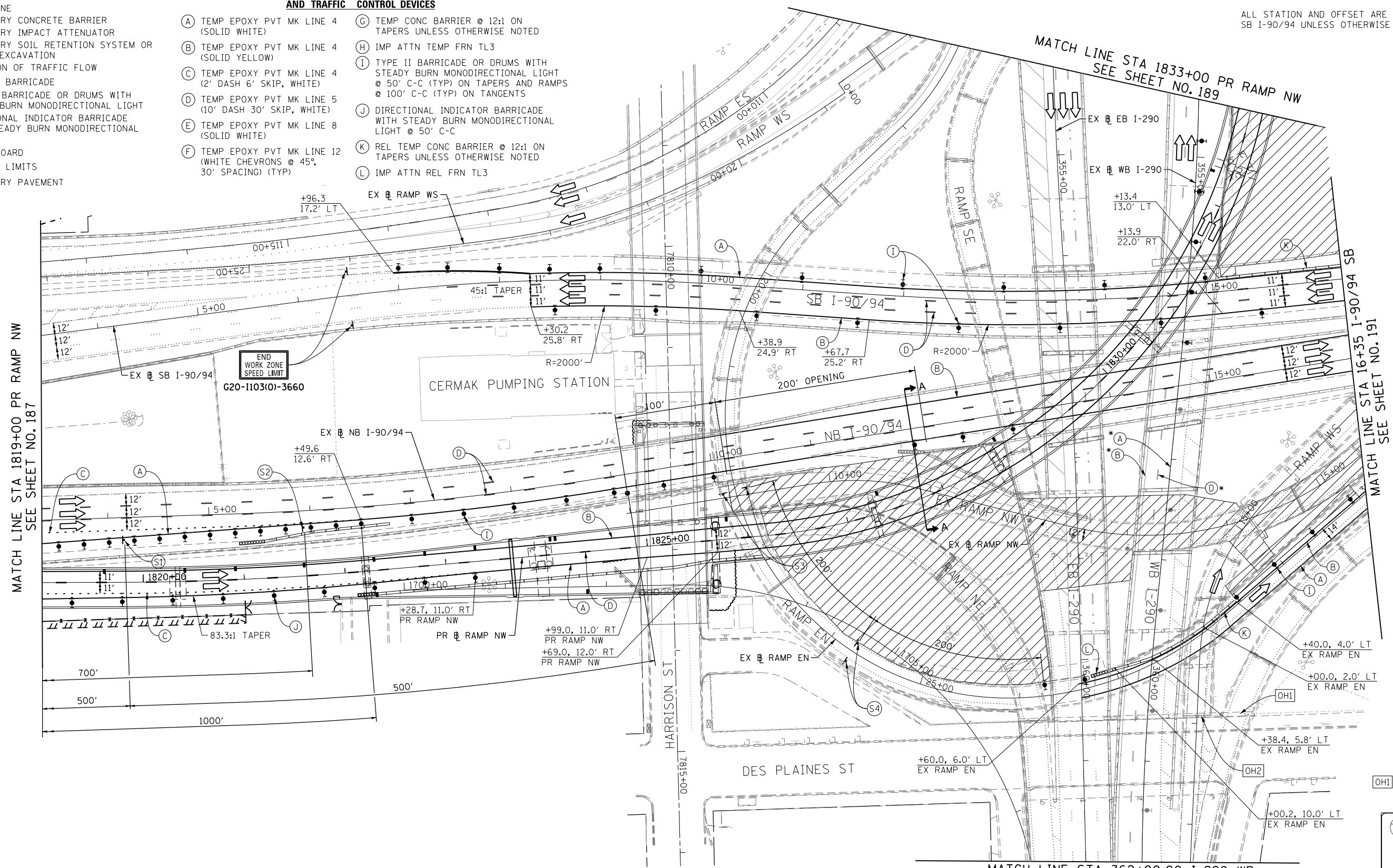


- LEGEND:**
- WORK ZONE
  - TEMPORARY CONCRETE BARRIER
  - TEMPORARY IMPACT ATTENUATOR
  - TEMPORARY SOIL RETENTION SYSTEM OR BRACED EXCAVATION
  - DIRECTION OF TRAFFIC FLOW
  - TYPE III BARRICADE
  - TYPE II BARRICADE OR DRUMS WITH STEADY BURN MONODIRECTIONAL LIGHT
  - DIRECTIONAL INDICATOR BARRICADE WITH STEADY BURN MONODIRECTIONAL SIGN
  - ARROW BOARD
  - REMOVAL LIMITS
  - TEMPORARY PAVEMENT

- PROPOSED TEMP PAVEMENT MARKINGS AND TRAFFIC CONTROL DEVICES**
- (A) TEMP EPOXY PVT MK LINE 4 (SOLID WHITE)
  - (B) TEMP EPOXY PVT MK LINE 4 (SOLID YELLOW)
  - (C) TEMP EPOXY PVT MK LINE 4 (2' DASH 6' SKIP, WHITE)
  - (D) TEMP EPOXY PVT MK LINE 5 (10' DASH 30' SKIP, WHITE)
  - (E) TEMP EPOXY PVT MK LINE 8 (SOLID WHITE)
  - (F) TEMP EPOXY PVT MK LINE 12 (WHITE CHEVRONS @ 45°, 30' SPACING) (TYP)
  - (G) TEMP CONC BARRIER @ 12:1 ON TAPERS UNLESS OTHERWISE NOTED
  - (H) IMP ATTN TEMP FRN TL3
  - (I) TYPE II BARRICADE OR DRUMS WITH STEADY BURN MONODIRECTIONAL LIGHT @ 50' C-C (TYP) ON TAPERS AND RAMP @ 100' C-C (TYP) ON TANGENTS
  - (J) DIRECTIONAL INDICATOR BARRICADE WITH STEADY BURN MONODIRECTIONAL LIGHT @ 50' C-C
  - (K) REL TEMP CONC BARRIER @ 12:1 ON TAPERS UNLESS OTHERWISE NOTED
  - (L) IMP ATTN REL FRN TL3

\* FROM PREVIOUS STAGE TO REMAIN

NOTE:  
ALL STATION AND OFFSET ARE OF THE NB AND SB I-90/94 UNLESS OTHERWISE NOTED.

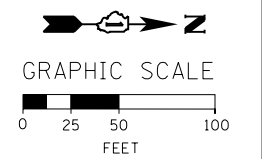
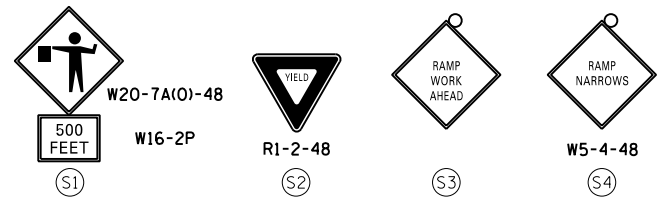


MATCH LINE STA 1819+00 PR RAMP NW  
SEE SHEET NO. 187

MATCH LINE STA 1833+00 PR RAMP NW  
SEE SHEET NO. 189

MATCH LINE STA 16+35 I-90/94 SB  
SEE SHEET NO. 191

MATCH LINE STA 362+00.00 I-290 WB  
SEE SHEET NO. 194



FILE PATH = C:\Project\160W28-sht-Staging4-07.dgn



D160W28-sht-Staging4-07.dgn  
USER NAME = auyeungh  
PLOT SCALE = 50.0000' / in.  
PLOT DATE = 4/28/2014

DESIGNED - OPS	REVISED -
DRAWN - PHP	REVISED -
CHECKED - KCF	REVISED -
DATE - 04/28/14	REVISED -

STATE OF ILLINOIS  
DEPARTMENT OF TRANSPORTATION

SUGGESTED STAGES OF CONSTRUCTION AND TRAFFIC CONTROL PLAN  
MAINLINE STAGING 4

SCALE: 1" = 50' SHEET 8 OF 14 SHEETS STA. 1819+00 TO STA. 16+35

F.A.I. RTE.	SECTION	COUNTY	TOTAL SHEETS	SHEET NO.
90/94/290	2013-010R	COOK	747	188
CONTRACT NO. 60W28				

ILLINOIS FED. AID PROJECT