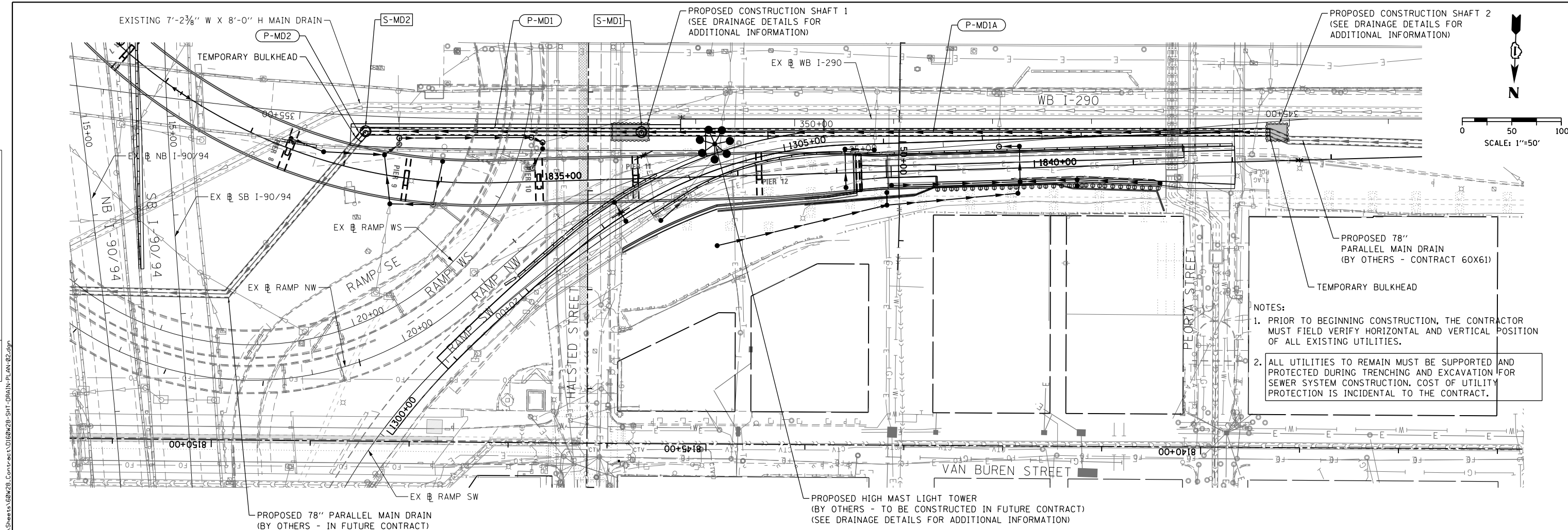


PLAN	SURVEYED	DATE
	PLOTTED	
	NOTED	
	CHECKED	
	BY	
	NO.	

PROFILE	SURVEYED	DATE
	PLOTTED	
	NOTED	
	CHECKED	
	BY	
	NO.	

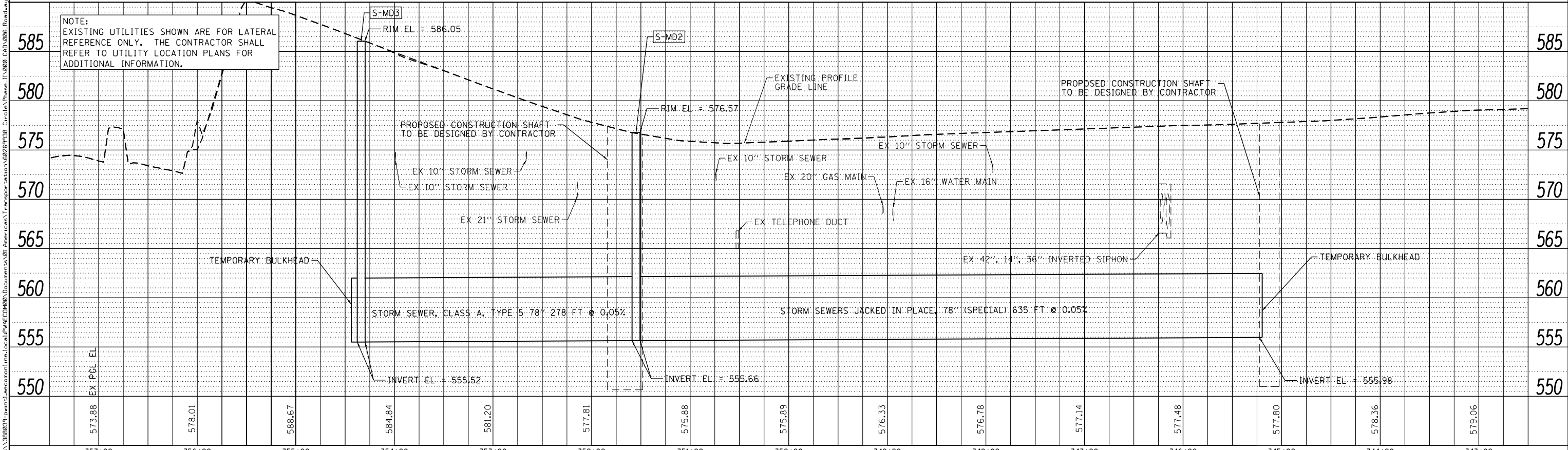


PROPOSED 78" PARALLEL MAIN DRAIN (BY OTHERS - CONTRACT 60X61)

TEMPORARY BULKHEAD

NOTES:

- PRIOR TO BEGINNING CONSTRUCTION, THE CONTRACTOR MUST FIELD VERIFY HORIZONTAL AND VERTICAL POSITION OF ALL EXISTING UTILITIES.
- ALL UTILITIES TO REMAIN MUST BE SUPPORTED AND PROTECTED DURING TRENCHING AND EXCAVATION FOR SEWER SYSTEM CONSTRUCTION. COST OF UTILITY PROTECTION IS INCIDENTAL TO THE CONTRACT.



D160W28-SHT-DRAIN-PLAN-02.dgn  
 USER NAME = chitua  
 PLOT SCALE = 50.0000' / in.  
 PLOT DATE = 3/25/2014

DESIGNED - DMS  
 DRAWN - DMS  
 CHECKED - EEE  
 DATE - 03/28/14

REVISED -  
 REVISED -  
 REVISED -  
 REVISED -

STATE OF ILLINOIS  
 DEPARTMENT OF TRANSPORTATION

DRAINAGE AND UTILITY PLAN AND PROFILE  
 78" MAIN DRAIN AT WB I-290  
 SCALE: 1"=50'  
 SHEET 1 OF 1 SHEETS STA. TO STA.

F.A.I. R.T.E.	SECTION	COUNTY	TOTAL SHEETS	SHEET NO.
90/94/290	2013-010R	COOK	747	232
CONTRACT NO. 60W28				
ILLINOIS FED. AID PROJECT				