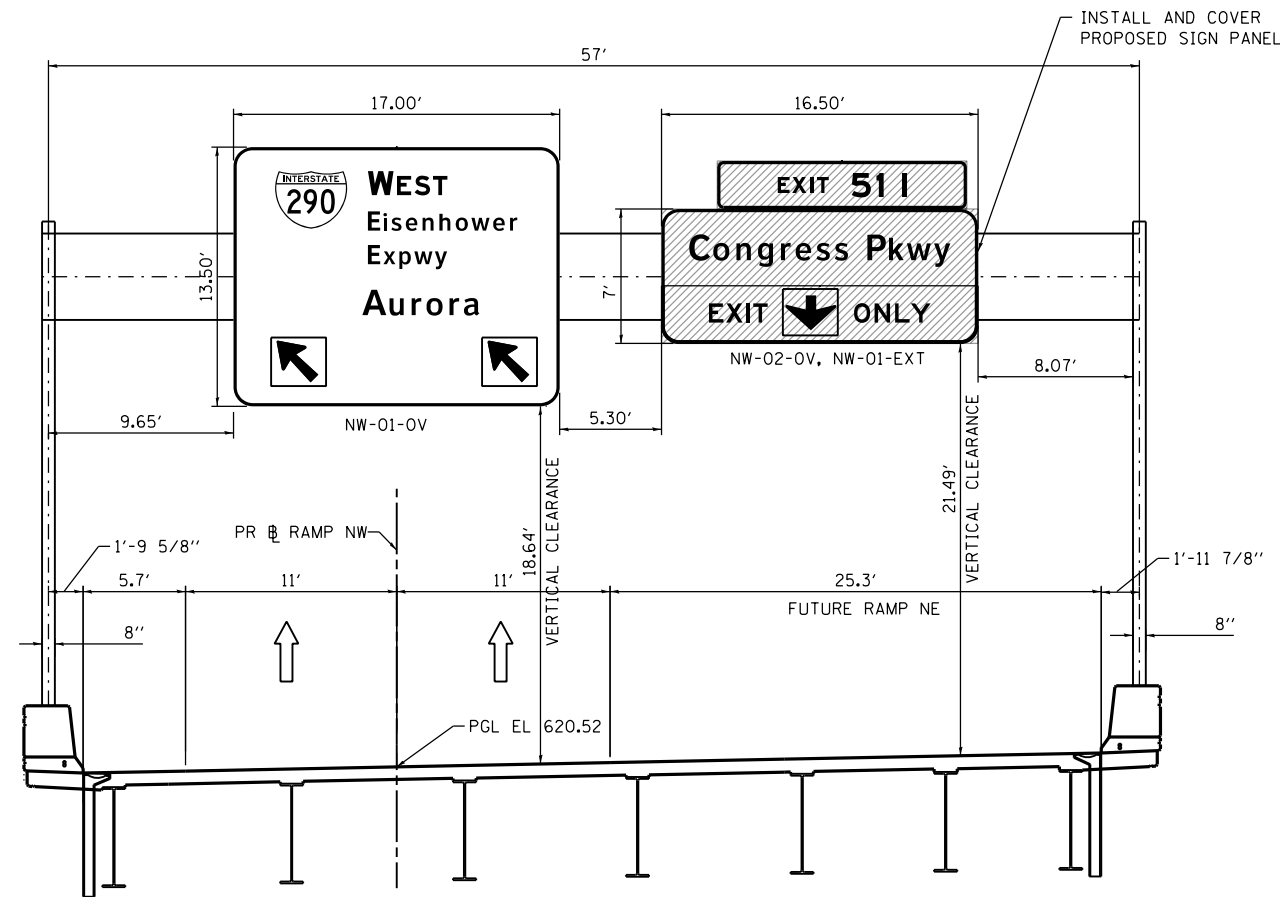


FILE PATH = p:\388035\pmt\escomon\local\AECOM\00\Documents\01_Americas\Transportation\6269938_Circle\Phase_1\000_CAD\005_Roadway_Sheets\60W28_Contract\0160W28-sht-Signing-Overhead-Struc-01.dgn



OVERHEAD SIGN STRUCTURE

STA 1823 + 65.50

PR RAMP NW



D160W28-sht-Signing-Overhead-Struc-01.dgn
 USER NAME = pimsarno
 PLOT SCALE = 10.0000' / in.
 PLOT DATE = 4/27/2014

DESIGNED - NSA
 DRAWN - NSA
 CHECKED - OPS
 DATE - 04/28/14

REVISED -
 REVISED -
 REVISED -
 REVISED -

**STATE OF ILLINOIS
 DEPARTMENT OF TRANSPORTATION**

OVERHEAD SIGN PANEL PLACEMENT

SCALE: NONE SHEET 1 OF 1 SHEETS STA. TO STA.

F.A.I. RTE.	SECTION	COUNTY	TOTAL SHEETS	SHEET NO.
90/94/290	2013-010R	COOK	747	281
CONTRACT NO. 60W28				
ILLINOIS FED. AID PROJECT				