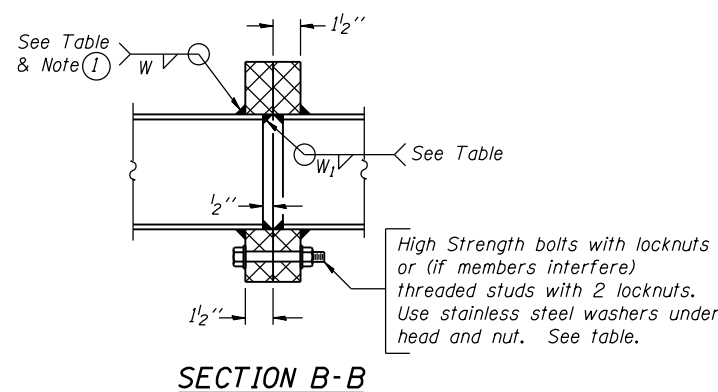
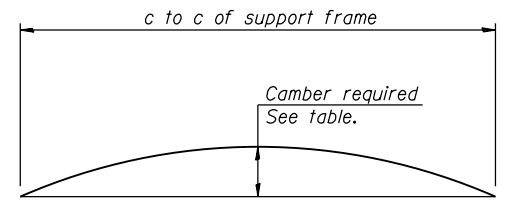
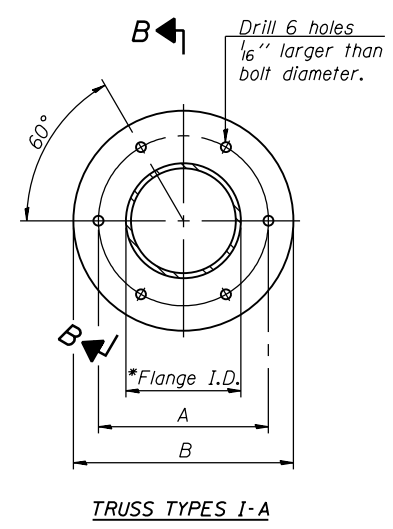
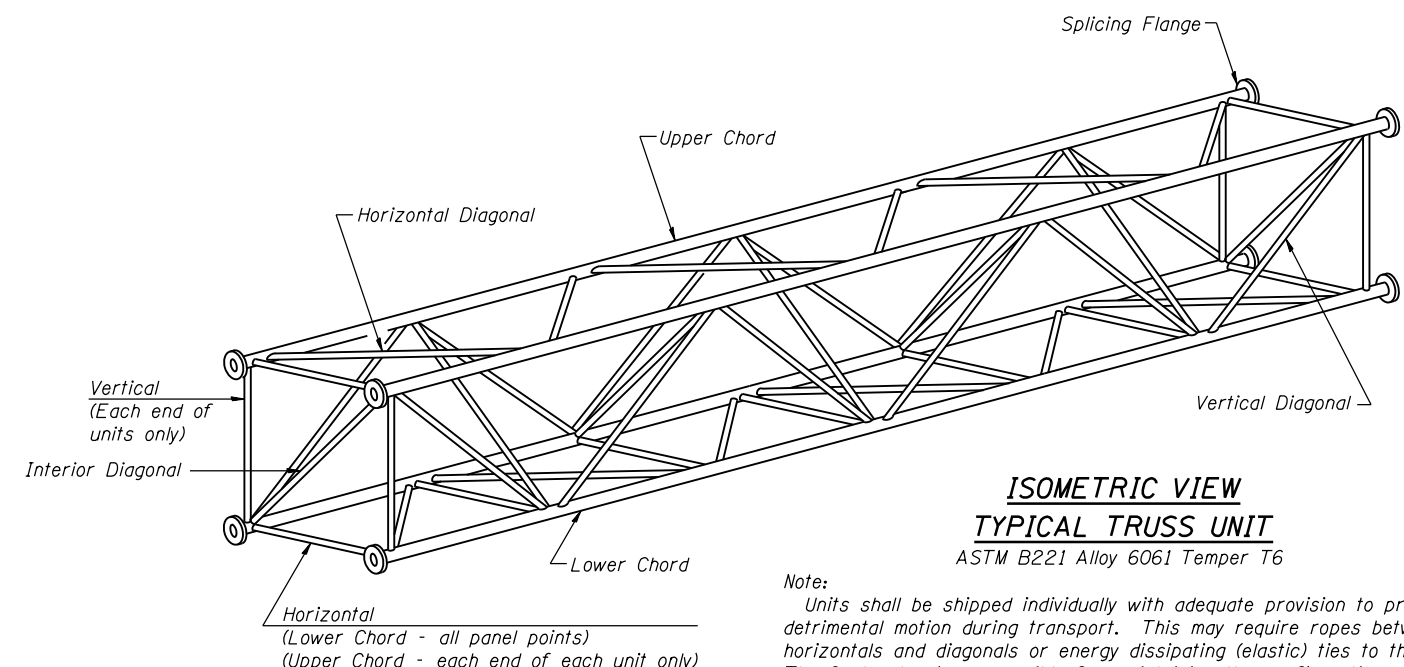


TRUSS UNIT TABLE

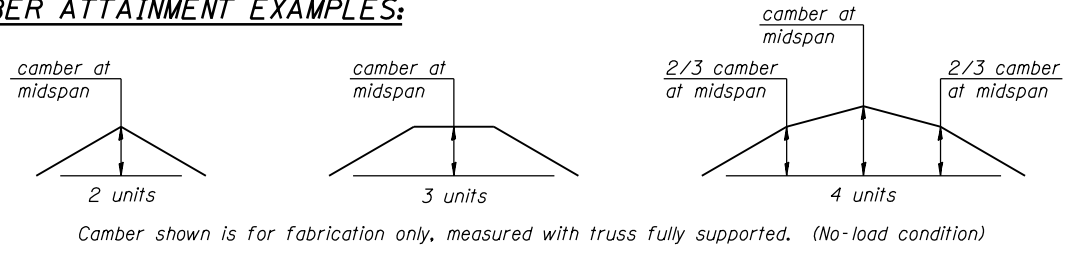
Structure Number	Station	Design Truss Type	Exterior Units (2)			Interior Unit				Upper & Lower Chord		Verticals; Horizontals; Vertical, Horizontal, and Interior Diagonals		Camber at Midspan	Splicing Flange					
			No. Panels per Unit	Unit Lgth.(L _e)	Panel Lgth.(P)	No. Req'd.	No. Panels per Unit	Unit Lgth.(L _i)	Panel Lgth.(P)	O.D.	Wall	O.D.	Wall		Bolts		Weld Sizes		A	B
															No./Splice	Dia.	W	W ₁		
IS0161290R050.5	1823+65.50	I-A	6	29'-3"	4'-6 ³ / ₄ "	0	-	-	-	5"	1/4"	2 1/2"	1/4"	1/16"	6	7/8"	5/16"	1/4"	8 3/4"	11 3/4"



① Splicing Flanges shall be attached to each truss unit with the truss shop assembled to camber shown. Truss units shall be in proper alignment and flange surfaces shall be shop bolted into full contact before welding. Sufficient external welds or tacks shall be made to secure flanges until remaining welds are made after disassembly. Adjacent flanges shall be "match marked" to insure proper field assembly.



CAMBER ATTAINMENT EXAMPLES:



60W28_SignStructure_Sheet03.dgn



USER NAME = patelvi	DESIGNED - VP	REVISED
PLOT SCALE = N.T.S.	CHECKED - DD	REVISED
PLOT DATE = 5/9/2014	DRAWN - VP	REVISED
	CHECKED - ATB	REVISED

**STATE OF ILLINOIS
DEPARTMENT OF TRANSPORTATION**

**OVERHEAD SIGN STRUCTURES - ALUMINUM TRUSS DETAILS
FOR TRUSS TYPES I-A**

SHEET NO. SOH-030F SOH-10 SHEETS

F.A.I. RTE. 90/94/290	SECTION 2013-010R	COUNTY COOK	TOTAL SHEETS 747	SHEET NO. 284
CONTRACT NO. 60W28			ILLINOIS FED. AID PROJECT	