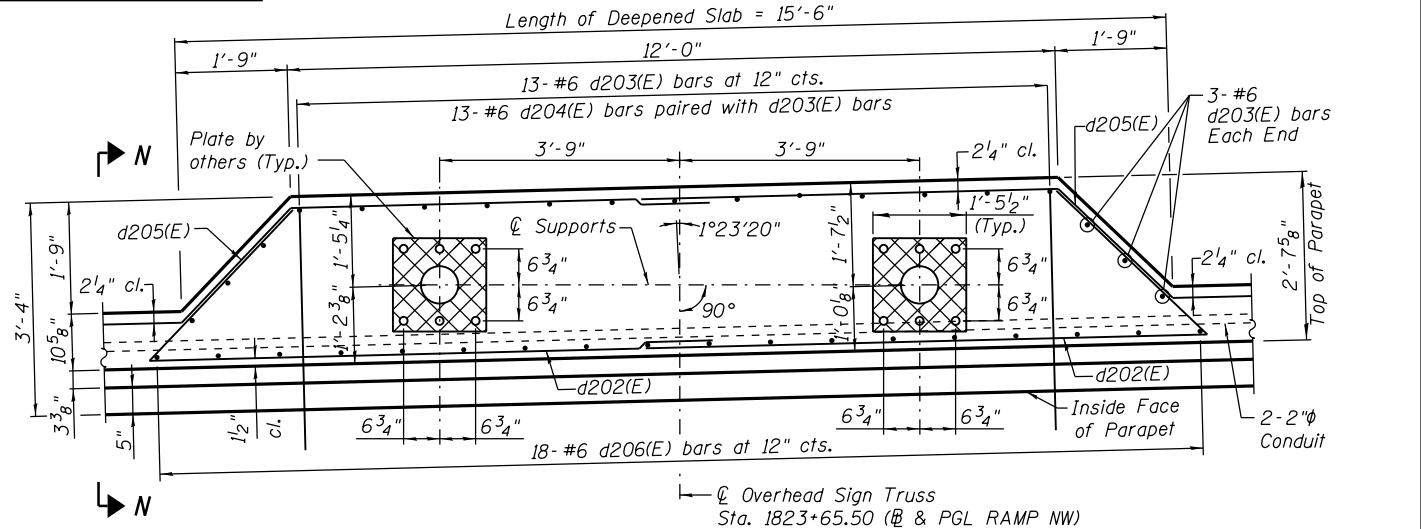


DECK PLAN I - UNIT II

NOTES:

1. Stations are along \square & PGL Ramp NW unless noted otherwise.
2. Dimensions radial from \square & PGL Ramp NW unless noted otherwise.
3. Minimum lap for #5 bars shall be 3'-3" and for #6 bars shall be 3'-10".
4. Bars indicated thus: 34x3-#6 etc. indicates 34 lines of bars with 3 lengths per line.
5. Bend longitudinal reinforcement bars as required to fit in the field.
6. See Sheet No. S-46 for parapet reinforcement.
7. See Sheet No. S-52 for Sections J-J and K-K.
8. See Sheet No. S-53 for Bill of Material.
9. See Sheet No. S-53 for Section M-M.
10. See Sheet No. S-58, Detail 1, Section N-N, and Sheet S-72 for DS-II Drainage Scupper.
11. See Sheet No. S-59 for Deck Pouring Sequence.
12. Δ Dimensions along inside face of parapet.
13. $\Delta\Delta$ Dimensions along inside face of right parapet.
14. $\Delta\Delta\Delta$ Dimensions along \square & PGL Ramp NW.
15. For additional parapet details at overhead sign truss see Sheets S-35, S-36 and S-58.



PARAPET PLAN FOR OVERHEAD SIGN TRUSS - LEFT PARAPET

0161705-60W28-5034-Deck.dgn



USER NAME = floresg	DESIGNED - JRE	REVISED
PLOT SCALE = N.T.S.	CHECKED - JPH	REVISED
PLOT DATE = 5/7/2014	DRAWN - TNP	REVISED
	CHECKED - EJO	REVISED

STATE OF ILLINOIS
DEPARTMENT OF TRANSPORTATION

DECK PLAN I - UNIT II
STRUCTURE NO. 016-1705
SHEET NO. S-34 OF S-165 SHEETS

F.A.I. RTE. 90/94/290	SECTION 2013-010R	COUNTY COOK	TOTAL SHEETS 747	SHEET NO. 350
CONTRACT NO. 60W28			ILLINOIS FED. AID PROJECT	