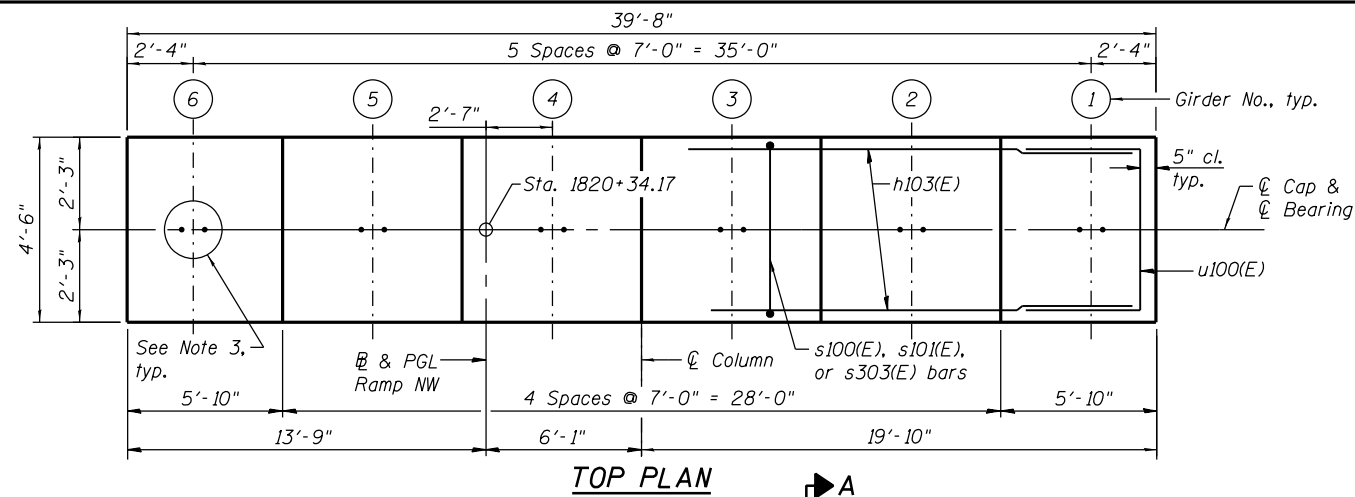
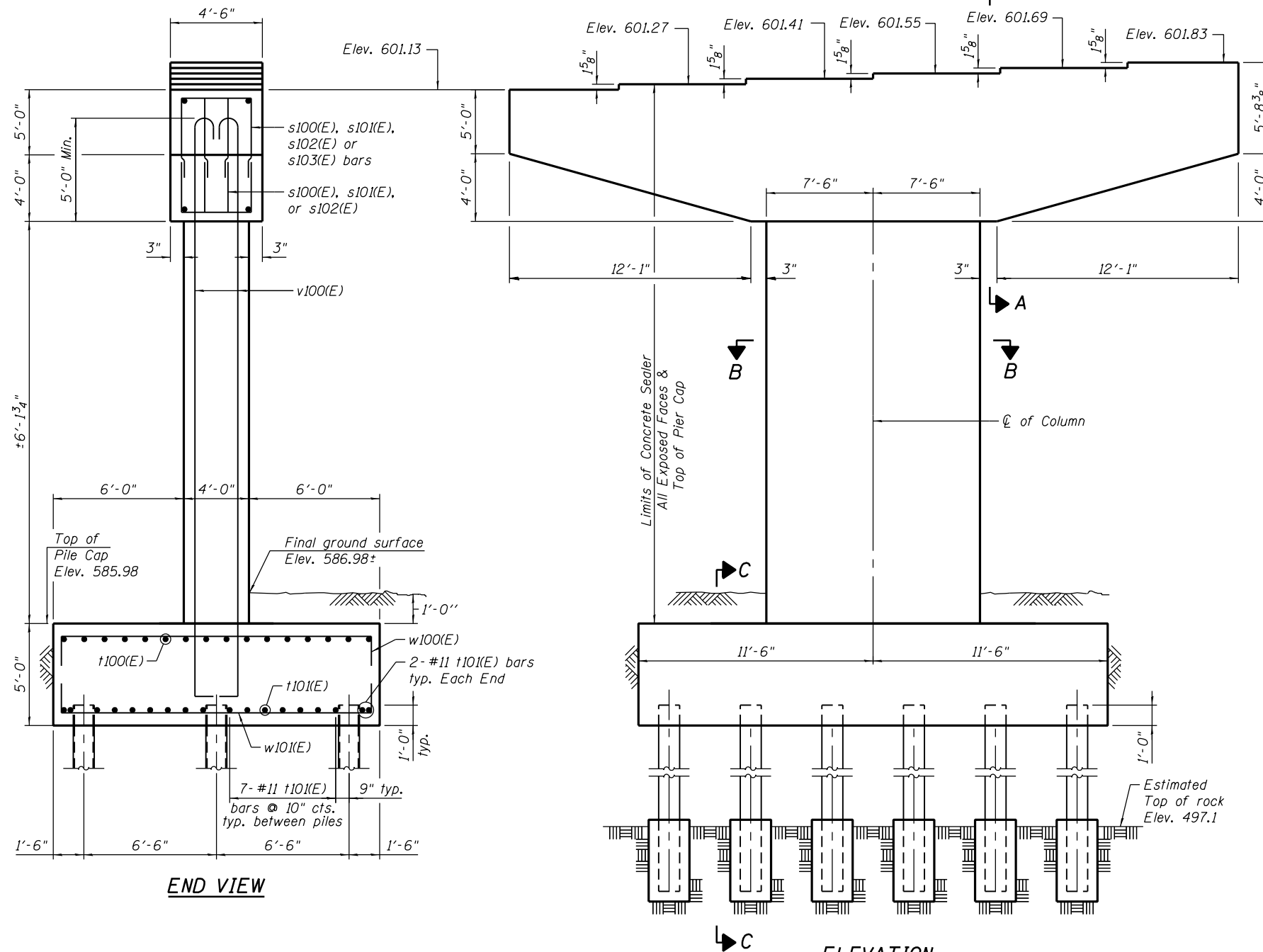


NOTES:

1. Pour steps monolithically with cap.
2. ϕ of Pier is radial to ϕ Ramp NW at Sta. 1820+34.17.
3. For Anchor Bolts Details see sheet S-106.
4. For Architectural Details see sheets S-143 thru S-145.
5. See sheet S-117 for Sections and Details.

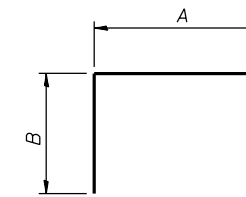


TOP PLAN



ELEVATION
(Looking North)

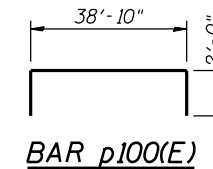
END VIEW



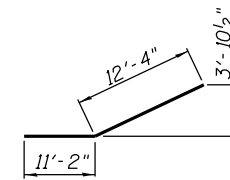
BARS

A & B DIMENSIONS

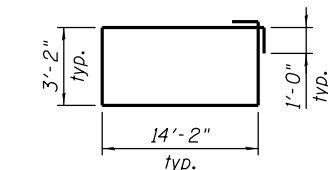
| Bar | A | B |
|---------|--------|-------|
| s100(E) | 2'-4" | 4'-6" |
| s101(E) | 2'-4" | 5'-4" |
| s102(E) | 2'-4" | 6'-4" |
| s103(E) | 3'-8" | 6'-4" |
| t100(E) | 22'-8" | 1'-4" |
| t101(E) | 22'-8" | 2'-0" |
| u100(E) | 3'-6" | 4'-0" |
| u101(E) | 3'-6" | 1'-0" |
| w100(E) | 15'-8" | 1'-4" |
| w101(E) | 15'-8" | 2'-0" |



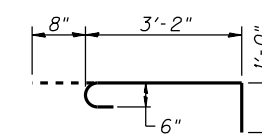
BAR p100(E)



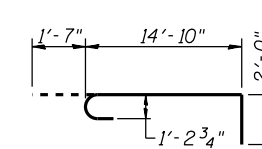
BAR p102(E)



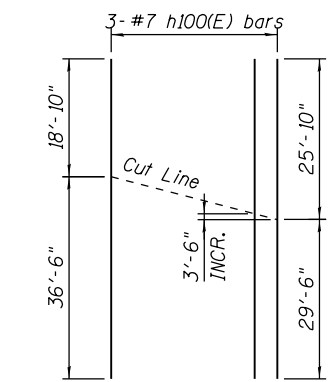
BAR s104(E)



BAR s105(E)



BAR v100(E)



FIELD CUTTING DIAGRAM

Order h100(E) bars Full Length. Cut as shown & use remainder of bars.

PILE DATA:

Type: Steel HP12x84
Nominal Req'd Bearing: Set in Rock
Factored Resistance Available: 460 kips
Est. Length: 89'-0"
No. Production Piles: 18
No. Test Piles: 0
Estimated Top of Rock Elev.: 497.1
Rock Socket Depth: 4'-0"
Rock Socket Dia.: 2'-0"

BILL OF MATERIAL

| Bar | No. | Size | Length | Shape |
|----------------------------------|-----|---------|---------|-------|
| h100(E) | 6 | #7 | 55'-4" | — |
| h101(E) | 16 | #7 | 38'-10" | — |
| h102(E) | 24 | #6 | 6'-0" | — |
| h103(E) | 12 | #6 | 4'-10" | — |
| p100(E) | 9 | #11 | 42'-10" | — |
| p101(E) | 9 | #11 | 38'-6" | — |
| p102(E) | 12 | #8 | 28'-6" | — |
| s100(E) | 20 | #6 | 11'-4" | □ |
| s101(E) | 72 | #6 | 13'-0" | □ |
| s102(E) | 100 | #6 | 15'-0" | □ |
| s103(E) | 30 | #6 | 16'-4" | □ |
| s104(E) | 6 | #6 | 36'-8" | □ |
| s105(E) | 36 | #6 | 4'-10" | □ |
| t100(E) | 16 | #8 | 25'-4" | — |
| t101(E) | 18 | #11 | 26'-8" | — |
| u100(E) | 16 | #6 | 11'-6" | — |
| u101(E) | 41 | #6 | 5'-6" | — |
| v100(E) | 56 | #11 | 18'-5" | — |
| w100(E) | 24 | #8 | 18'-4" | — |
| w101(E) | 34 | #11 | 19'-8" | — |
| Concrete Structures | | Cu. Yd. | 135.5 | |
| Reinforcement Bars, Epoxy Coated | | Pound | 26,840 | |
| Concrete Sealer | | Sq. Ft. | 1,228 | |
| Braced Excavation | | Cu. Yd. | 44.4 | |
| Furnishing Steel Piles HP 12x84 | | Foot | 1,602 | |
| Setting Pile in Rock | | Each | 18 | |

MIN. LAP LENGTH

- #6 bars: 3'-10"
- #8 bars: 6'-9"
- #11 bars: 13'-4"



USER NAME = floresg
DESIGNED - RD
CHECKED - ATB
DRAWN - BM
CHECKED - RD
PLOT SCALE = N.T.S.
PLOT DATE = 5/7/2014

DESIGNED - RD
CHECKED - ATB
DRAWN - BM
CHECKED - RD
REVISIONS

REVISIONS

STATE OF ILLINOIS
DEPARTMENT OF TRANSPORTATION

PIER 1 - PLAN AND ELEVATION
STRUCTURE NO. 016-1705

SHEET NO. S-116 OF S-165 SHEETS

| F.A.I. RTE. | SECTION | COUNTY | TOTAL SHEETS | SHEET NO. |
|---------------------------|-----------|--------|--------------|-----------|
| 90/94/290 | 2013-010R | COOK | 747 | 432 |
| CONTRACT NO. | | | 60W28 | |
| ILLINOIS FED. AID PROJECT | | | | |

0161705-60W28-S116-Pier.dgn