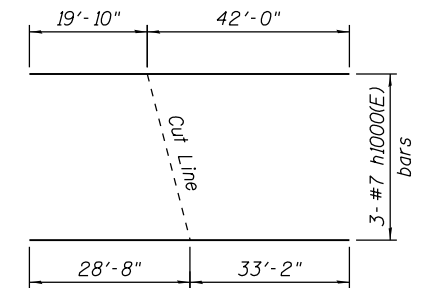
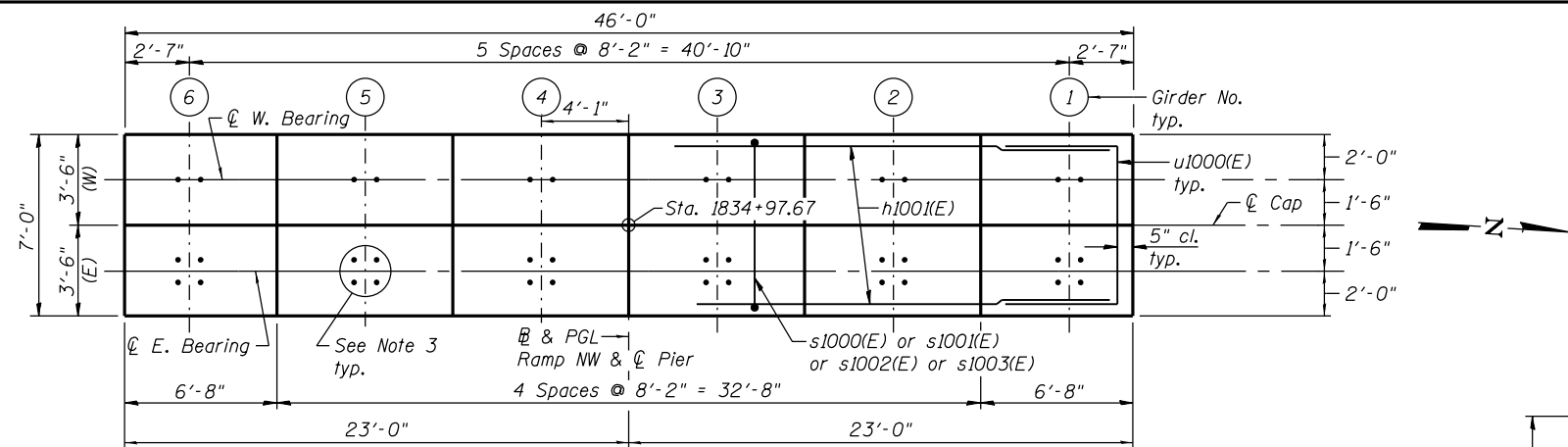


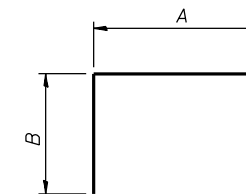
NOTES:

- Four steps monolithically with cap.
- ☉ of Pier is radial to ☉ Ramp NW at Sta. 1834+97.67.
- For Anchor Bolts Details see sheet S-109.
- For Architectural Details see sheets S-143 thru S-145.
- See sheet S-138 For Sections and Details.
- (W)-West Girder, (E)-East Girder.

* The quantities and detailing are based on the estimated elevations shown on the plans. The actual elevations may differ at each shaft and corresponding adjustments shall be made to the drilled shaft and reinforcement quantities and payment limits.



FIELD CUTTING DIAGRAM
Order h1000(E) bars Full Length. Cut as shown and use remainder of bars.



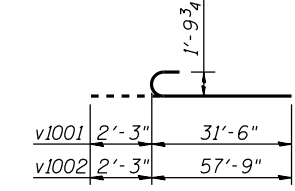
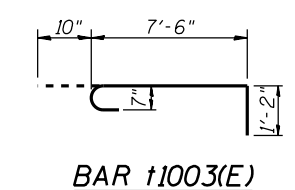
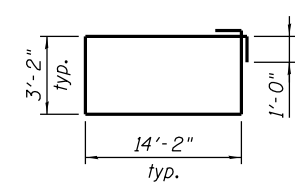
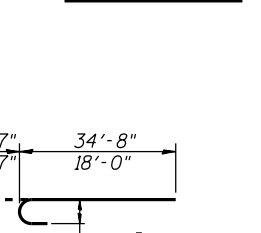
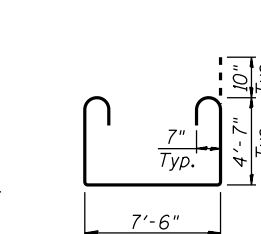
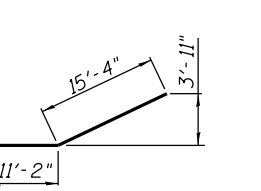
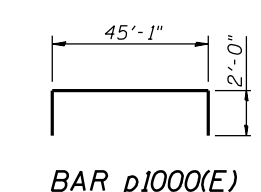
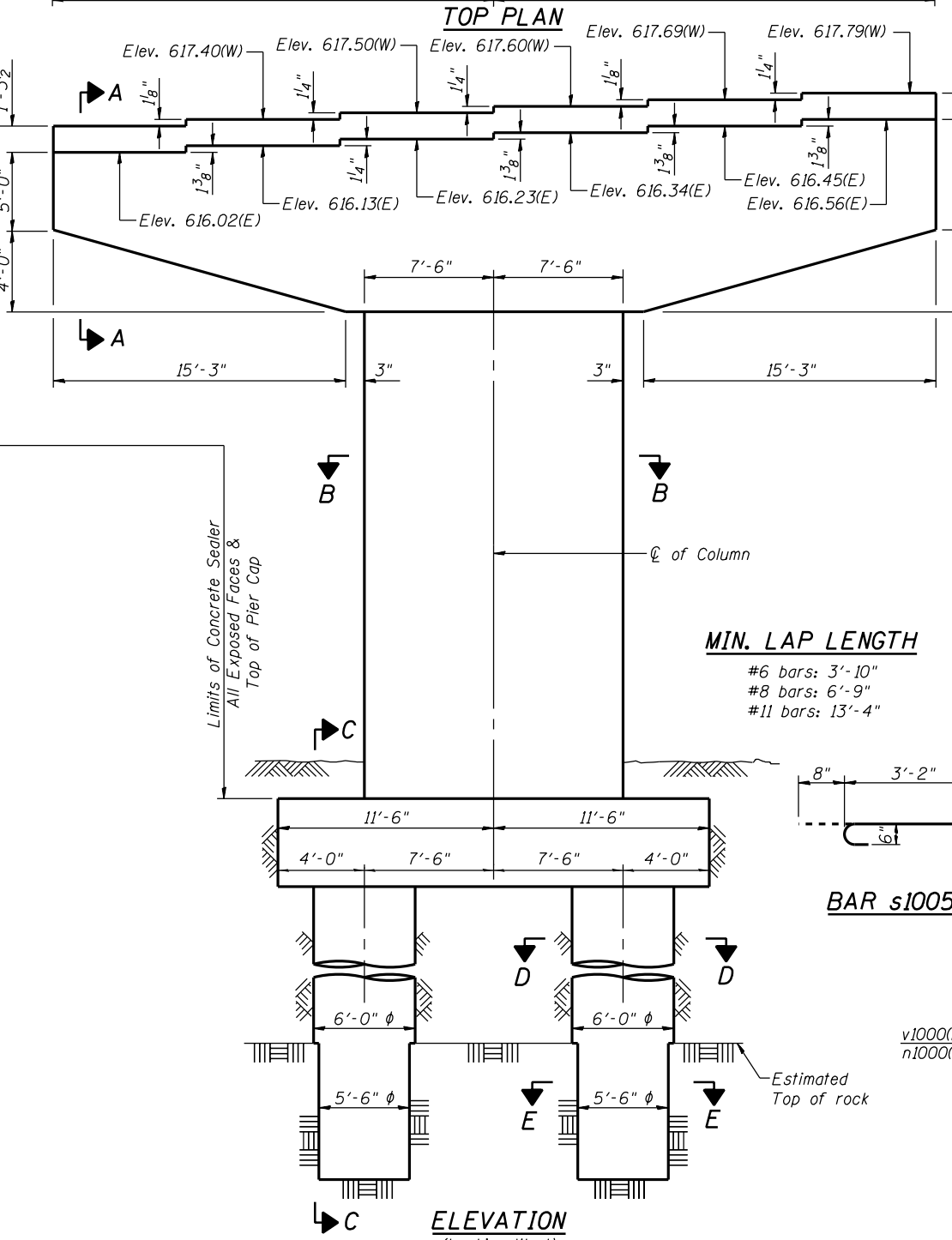
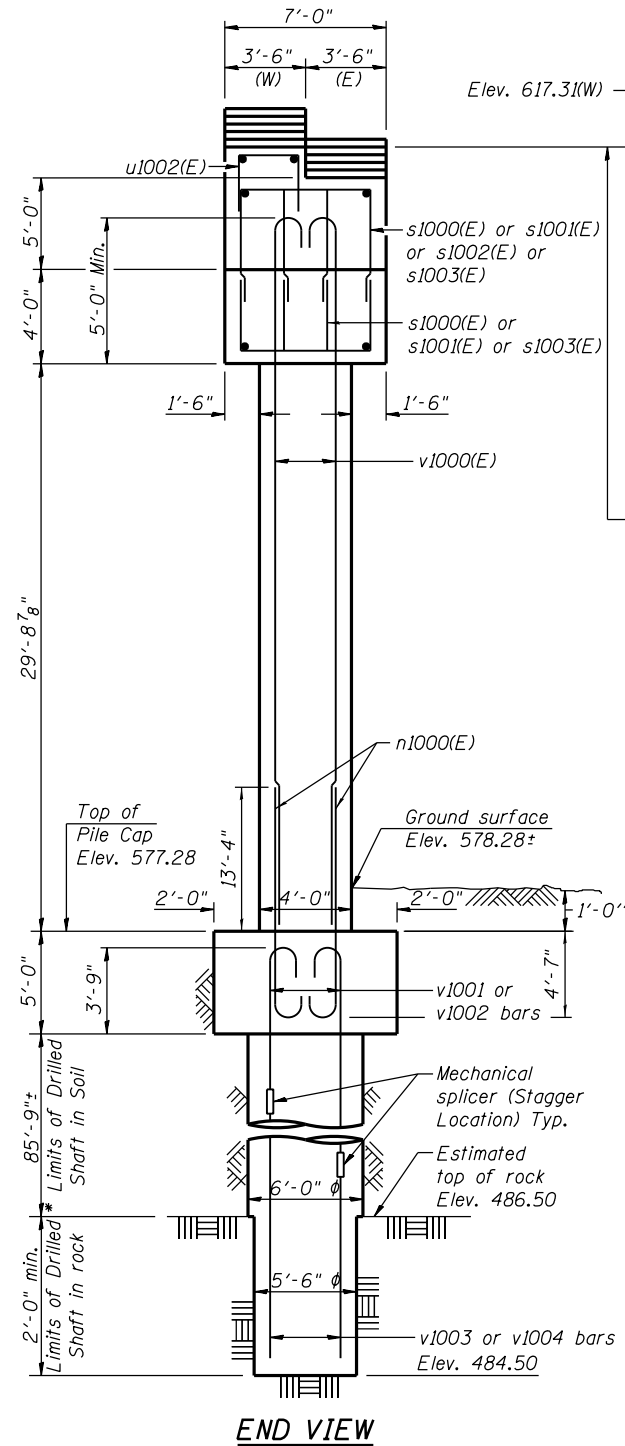
BARS A & B DIMENSIONS

Bar	A	B
s1000(E)	4'-2"	4'-11"
s1001(E)	4'-2"	6'-2"
s1002(E)	6'-2"	6'-2"
s1003(E)	4'-2"	4'-4"
t1001(E)	22'-4"	3'-6"
t1002(E)	22'-4"	2'-0"
u1000(E)	6'-0"	4'-0"
u1001(E)	7'-6"	4'-0"
u1002(E)	2'-11"	1'-0"

BILL OF MATERIAL

Bar	No.	Size	Length	Shape
h1000(E)	6	#7	61'-10"	—
h1001(E)	18	#7	45'-2"	—
h1002(E)	14	#7	22'-6"	—
h1003(E)	20	#5	7'-10"	—
h1004(E)	10	#5	6'-1"	—
n1000(E)	56	#11	19'-7"	U
p1000(E)	18	#11	49'-1"	┌
p1001(E)	20	#8	26'-6"	┌
s1000(E)	72	#6	14'-0"	┌
s1001(E)	156	#6	16'-6"	┌
s1002(E)	28	#6	18'-6"	┌
s1003(E)	20	#6	12'-10"	┌
s1004(E)	30	#6	36'-8"	┌
s1005(E)	180	#6	4'-10"	┌
sp1000	2	#6	88'-0"	W
t1000(E)	31	#7	18'-4"	┌
t1001(E)	18	#11	29'-4"	┌
t1002(E)	16	#11	26'-4"	┌
t1003(E)	31	#7	9'-2"	┌
u1000(E)	16	#7	14'-0"	┌
u1001(E)	14	#7	15'-6"	┌
u1002(E)	47	#6	4'-11"	┌
v1000(E)	56	#11	36'-3"	┌
v1001	20	#14	33'-9"	┌
v1002	20	#14	60'-0"	┌
v1003	20	#14	33'-9"	┌
v1004	20	#14	60'-0"	┌
Concrete Structures			Cu. Yd.	202.4
Reinforcement Bars, Epoxy Coated			Pound	43,550
Reinforcement Bars			Pound	37,420
Drilled Shaft in Soil			Cu. Yd.	179.6
Drilled Shaft in Rock			Cu. Yd.	3.5
Concrete Sealer			Sq. Ft.	2,601
Braced Excavation			Cu. Yd.	93.7
Crosshole Sonic Logging			Each	1

** Length is height of spiral.



MIN. LAP LENGTH

- #6 bars: 3'-10"
- #8 bars: 6'-9"
- #11 bars: 13'-4"



USER NAME = floresg
DESIGNED - RD
CHECKED - ATB
PLOT SCALE = N.T.S.
DRAWN - BM
PLOT DATE = 5/7/2014
CHECKED - RD

DESIGNED - RD
CHECKED - ATB
DRAWN - BM
CHECKED - RD

REVISED
REVISED
REVISED
REVISED

STATE OF ILLINOIS
DEPARTMENT OF TRANSPORTATION

PIER 10 - PLAN AND ELEVATION
STRUCTURE NO. 016-1705

SHEET NO. S-137 OF S-165 SHEETS

F.A.I. R.T.E.	SECTION	COUNTY	TOTAL SHEETS	SHEET NO.
90/94/290	2013-010R	COOK	747	452
CONTRACT NO. 60W28				
ILLINOIS FED. AID PROJECT				

0161705-60W28-S137-Pier.dgn