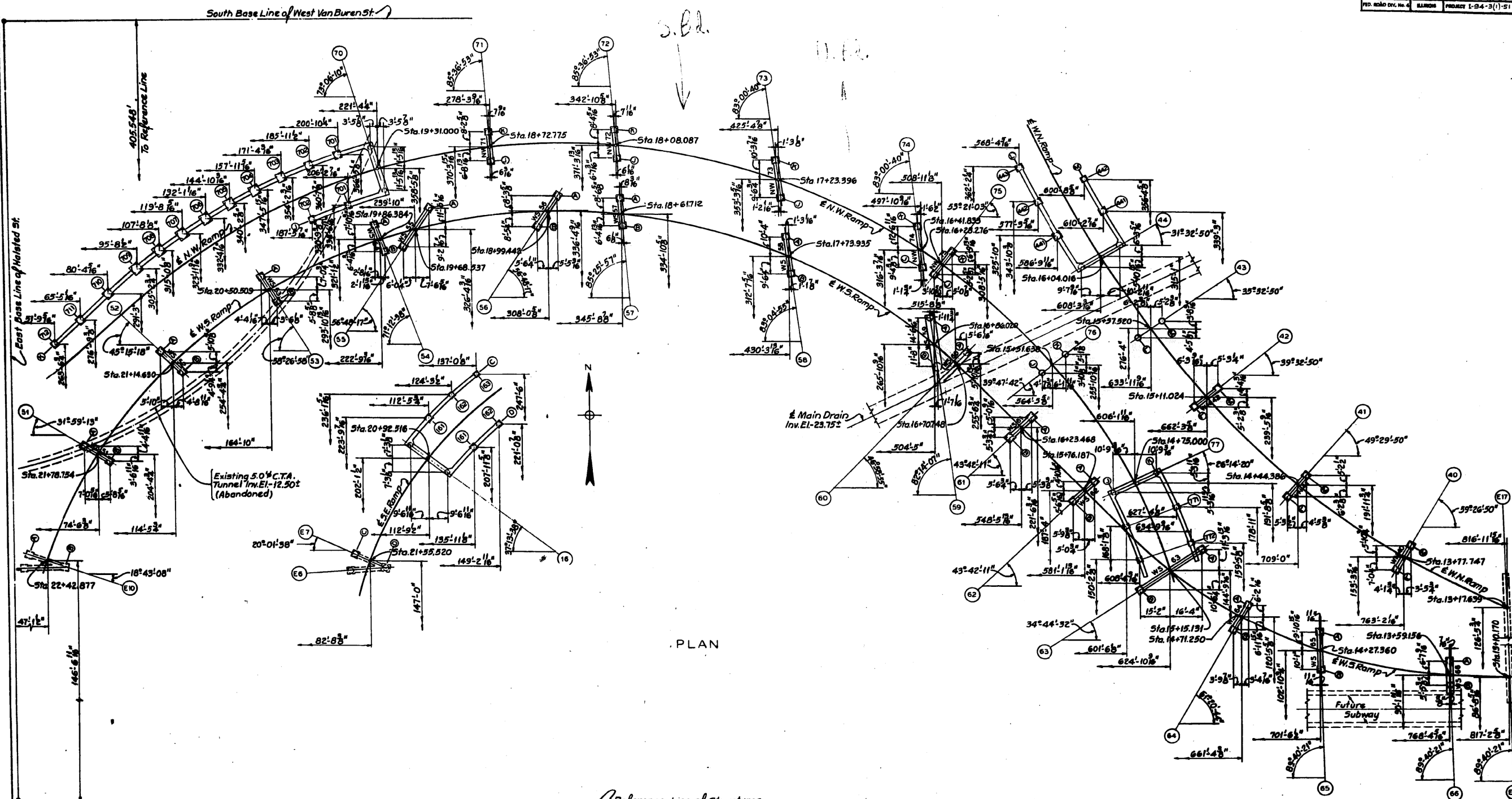


FOR INFORMATION ONLY

ROUTE NO.	SECTION	COUNTY	TOTAL SHEETS	SHEET NO.
7. A. I. 94	0101.6-1P	COOK	113	59
RD. 60W D.V. No. 4	BARROS	PROJECT 1-94-3(1)-51		



PLAN

IN CHARGE *M. L. ...*
 DESIGNED BY *M. R. ...*
 DRAWN BY *Christian Walter*
 CHECKED BY *D. Kasunski, J. Curtis*
 APPROVED BY *F. J. ...*

- References:
- General Notes
 - Foundation Plan South of Reference Line
 - Sub-Pier Schedule and Foundation Girders
 - Abutments and Retaining Walls
 - Concrete Bents
 - Sheet 5-1
 - Sheet 5-3
 - Sheets 5-5 to 5-8
 - Sheets 5-11 to 5-14

CITY OF CHICAGO
 DEPARTMENT OF PUBLIC WORKS
 BUREAU OF ENGINEERING
NORTHWEST ROUTE SUPERHIGHWAY
 HALSTED STREET INTERCHANGE
 SECTION 0101.6-1P
FOUNDATION PLAN
 (NORTH OF REFERENCE LINE)
 SCALE: 1"=20'-0"
 AUGUST 1999
 SHEET NO. 3-2 OF 113 SHEETS

FILE PATH = C:\Projects\14-0425 - 60W28 Structure\14-0425-sht-AS-BUILT-07.dgn



D160W28-sht-AS-BUILT-07.dgn
 USER NAME = ayeungh
 PLOT SCALE = 1:8000 / 1"=80'
 PLOT DATE = 4/25/2014

DESIGNED -	REVISED -
DRAWN -	REVISED -
CHECKED -	REVISED -
DATE - 04/28/14	REVISED -

STATE OF ILLINOIS
 DEPARTMENT OF TRANSPORTATION

EXISTING AS-BUILTS	SCALE: NTS	SHEET 7 OF 48 SHEETS	STA. TO STA.
SN 016-2449 & SN 016-2451			

F.A.I. RTE.	SECTION	COUNTY	TOTAL SHEETS	SHEET NO.
90/94/290	2013-010R	COOK	747	477
CONTRACT NO. 60W28				
ILLINOIS FED. AID PROJECT				