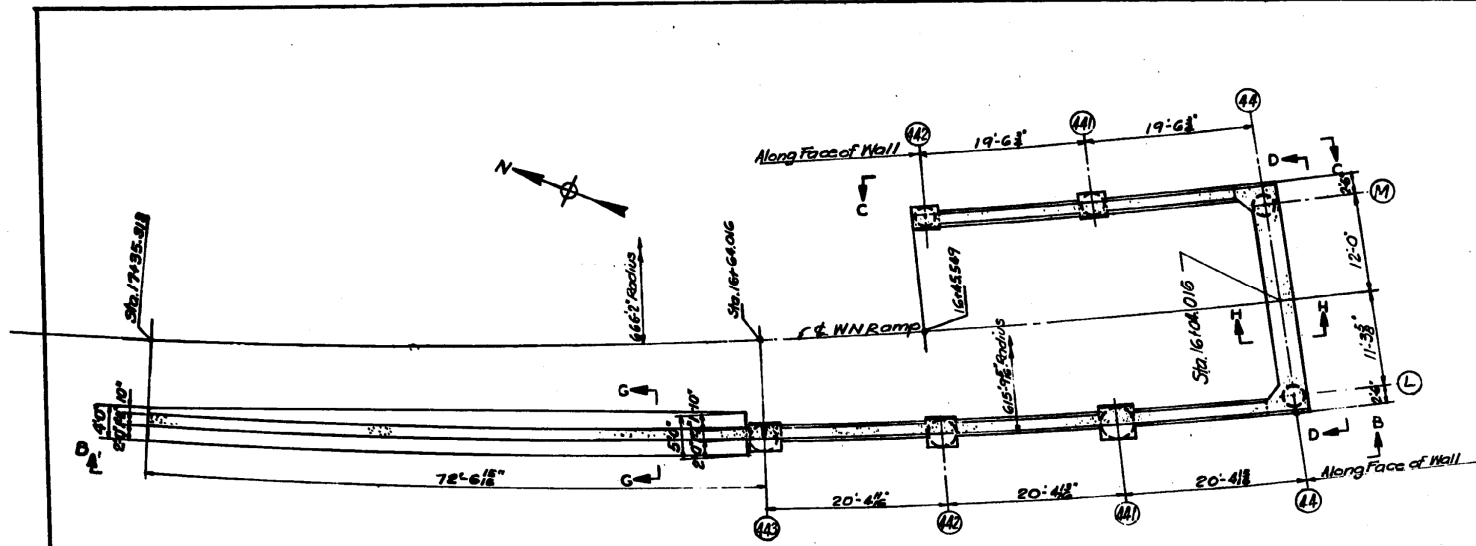
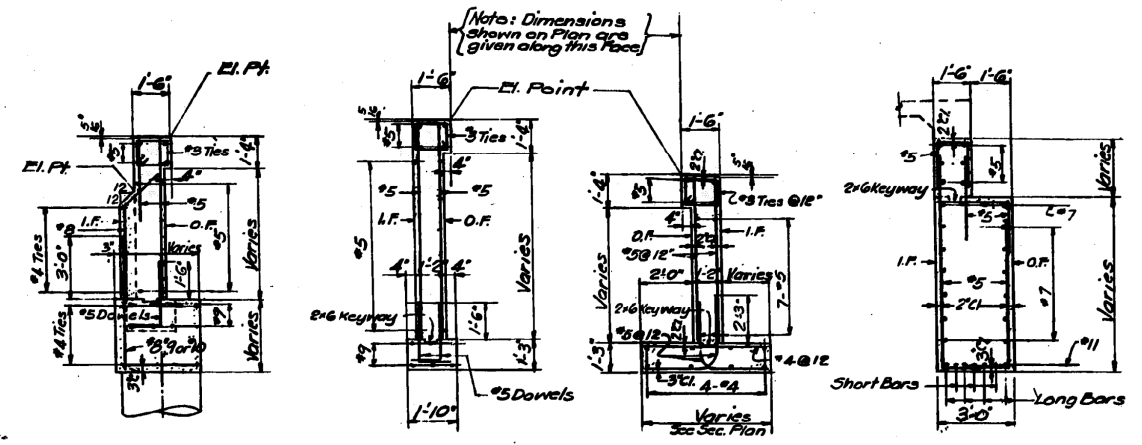


FOR INFORMATION ONLY

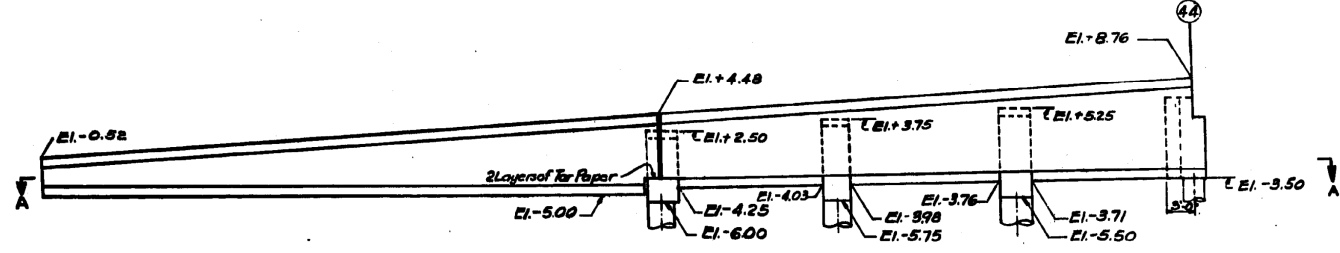
ROUTE NO.	SECTION	COUNTY	TOTAL SHEETS	SHEET NO.
F. A. I. 94	0101 6-1P	COOK	113	64
FED. ROAD DIST. NO. 4	ILLINOIS	PROJECT	I-94-3(1)-51	



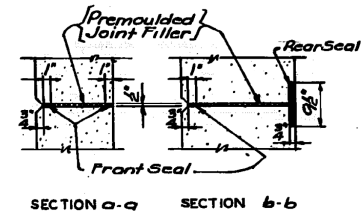
SECTIONAL PLAN A-A
Scale 1/8"=1'-0"



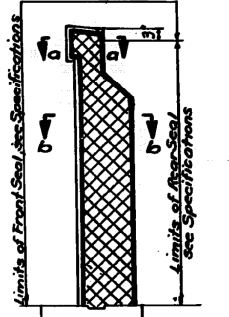
SECTION E-E
SECTION F-F
SECTION G-G
SECTION H-H



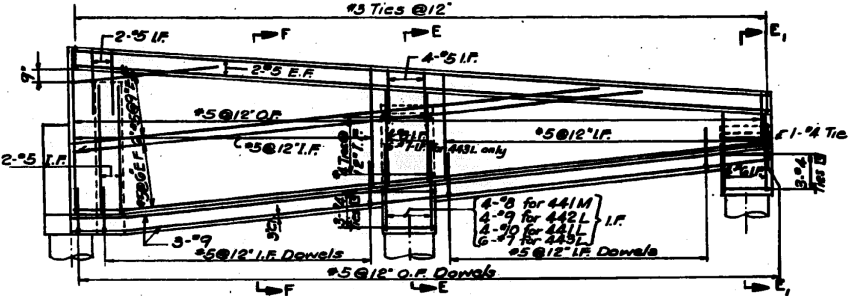
ELEVATION B-B
Scale 1/8"=1'-0"



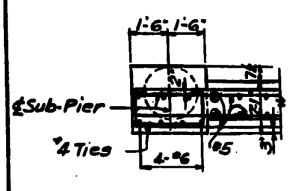
SECTION a-a SECTION b-b



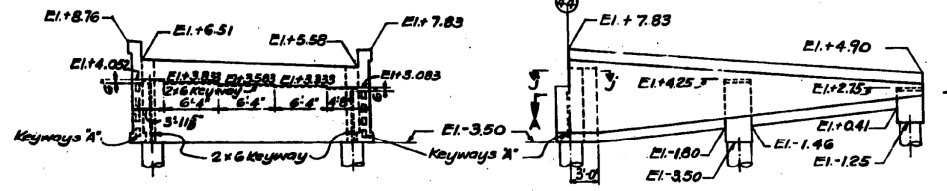
SECTION THRU EXPANSION JOINT



REINFORCEMENT FOR ELEVATION C-C SHOWN
REINFORCEMENT FOR ELEVATION B-B SIMILAR
Scale 1/8"=1'-0"



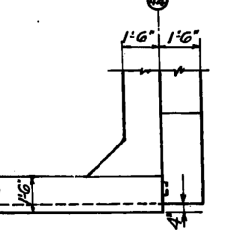
SECTIONAL PLAN
SUB-PIER 442M



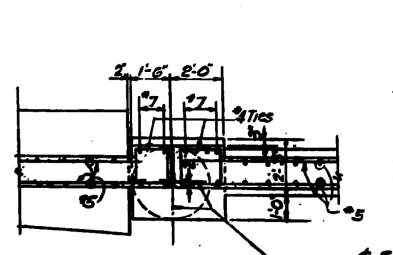
ELEVATION D-D
Scale 1/8"=1'-0"

Note:
Keyways 'A' are 2' deep and
6" wide (lengths and spaces
between to be equal)

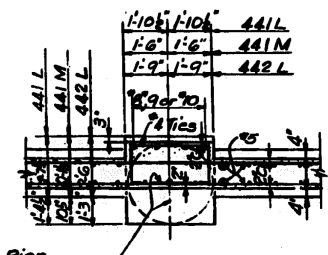
ELEVATION C-C
Scale 1/8"=1'-0"



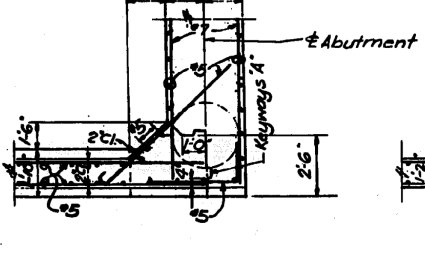
PART TOP PLAN



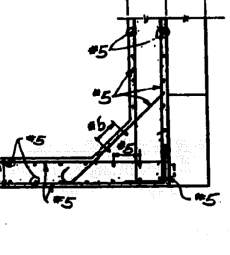
SECTIONAL PLAN
SUB-PIER 443L



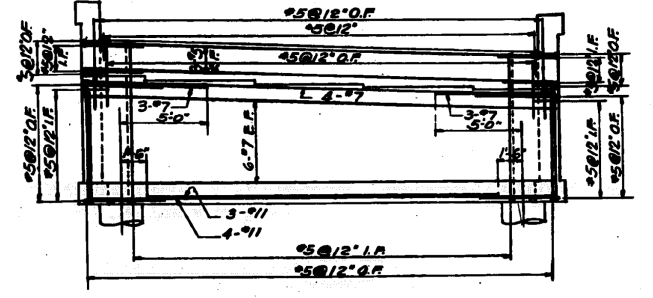
SECTIONAL PLAN
SUB-PIERS 441L, 441M & 442L



SECTIONAL PLAN
SUB-PIERS 44L AND 44M



SECTIONAL PLAN j-j



REINFORCEMENT IN ABUTMENT
Scale 1/8"=1'-0"

References:
General Notes
Foundation Plan
Sub-Pier Schedule
Location of Anchor Bolts in Abutment Sheet S-14

Sheet S-1
Sheet S-2
Sheet S-4

CITY OF CHICAGO
DEPARTMENT OF PUBLIC WORKS
BUREAU OF ENGINEERING
NORTHWEST ROUTE SUPERHIGHWAY

HALSTED STREET INTERCHANGE
SECTION 0101 6-1P
ABUTMENT AND RETAINING WALLS
WN RAMP

SCALE: 1/8"=1'-0" EXCEPT AS NOTED
AUGUST 1999
SHEET NO. 3-7 OF 113 SHEETS

FILE PATH = C:\Projects\14-0425 - 60W28 - 60W28 - 60W28 - sht-AS-BUILT-12.dgn



D160W28-sht-AS-BUILT-12.dgn
USER NAME = auyeungh
PLOT SCALE = 1:8000 / 1"=80'
PLOT DATE = 4/25/2014

DESIGNED -	REVISED -
DRAWN -	REVISED -
CHECKED -	REVISED -
DATE - 04/28/14	REVISED -

STATE OF ILLINOIS
DEPARTMENT OF TRANSPORTATION

EXISTING AS-BUILTS
SN 016-2449 & SN 016-2451

SCALE: NTS SHEET 12 OF 48 SHEETS STA. TO STA.

F.A.I. RTE.	SECTION	COUNTY	TOTAL SHEETS	SHEET NO.
90/94/290	2013-010R	COOK	747	482
				CONTRACT NO. 60W28
ILLINOIS FED. AID PROJECT				