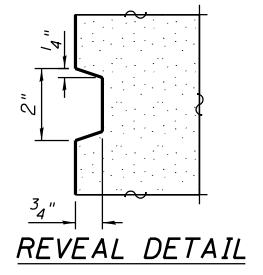
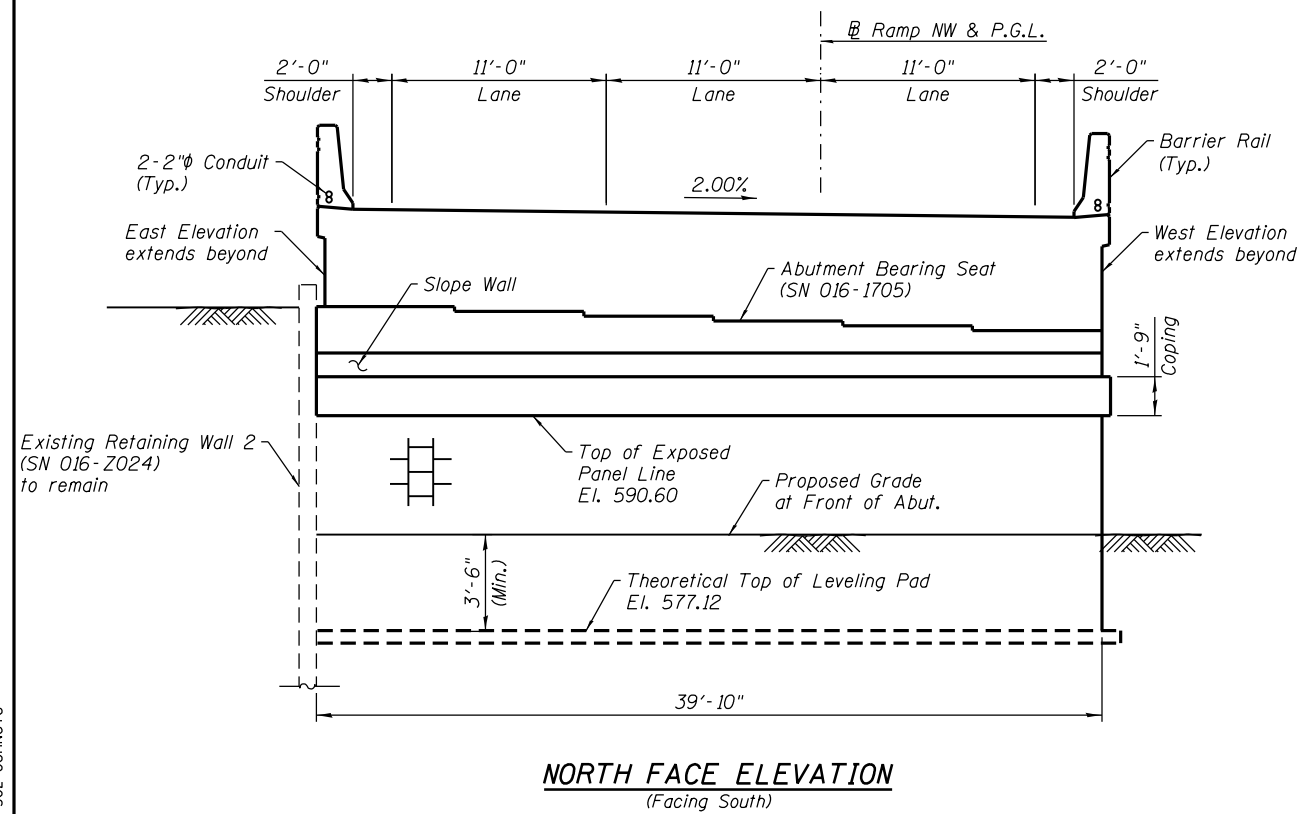


**EAST ELEVATION**

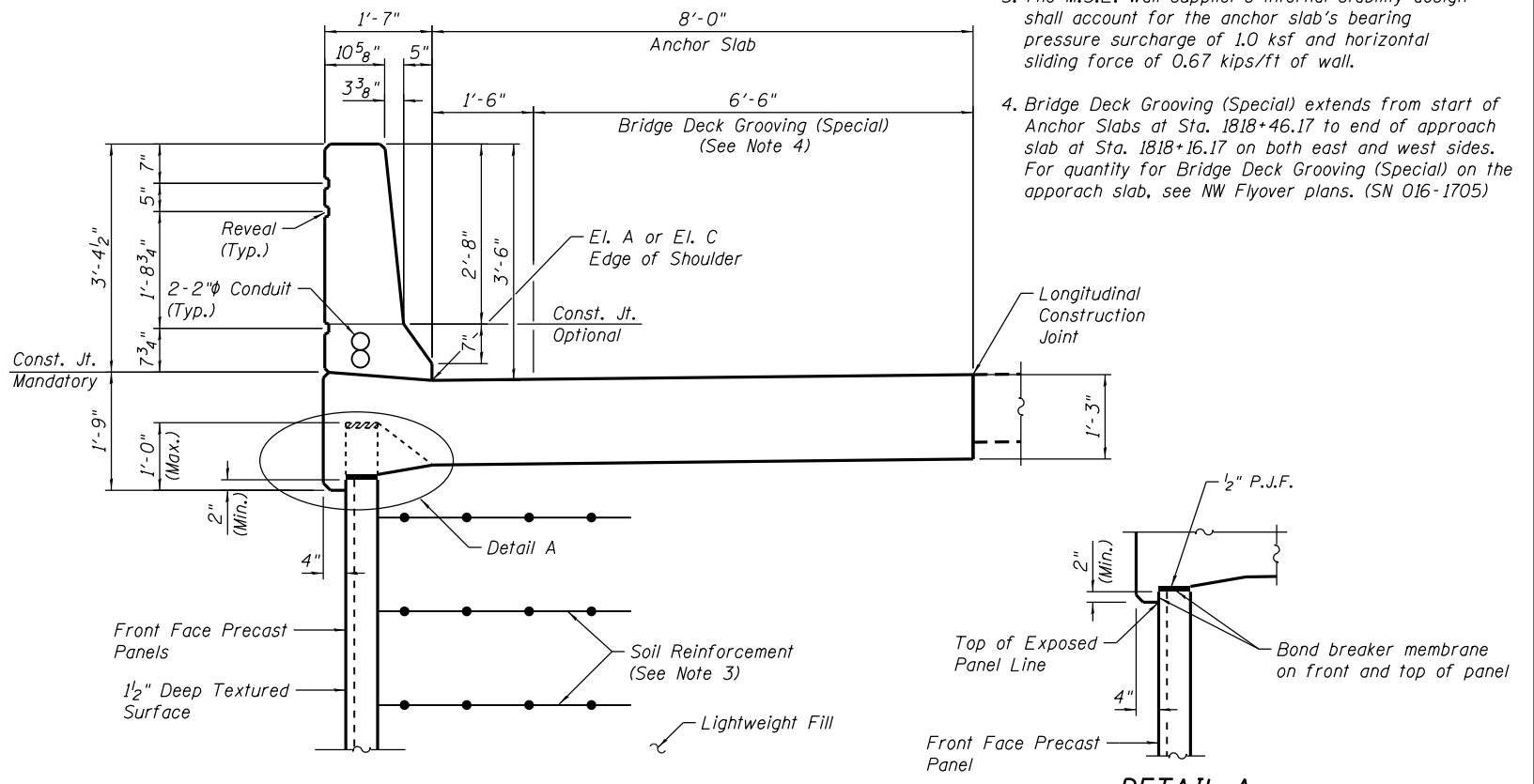


**REVEAL DETAIL**

- NOTES:**
1. See Sheet RW1-05 for Tables 1 & 2.
  2. Anchor Slabs on West and East sides of Ramp NW end at Sta. 1818+46.17 where they overlap the abutment backwall by 6". 30' Bridge Approach Slab lays between the anchor slabs.
  3. The M.S.E. wall supplier's internal stability design shall account for the anchor slab's bearing pressure surcharge of 1.0 ksf and horizontal sliding force of 0.67 kips/ft of wall.
  4. Bridge Deck Grooving (Special) extends from start of Anchor Slabs at Sta. 1818+46.17 to end of approach slab at Sta. 1818+16.17 on both east and west sides. For quantity for Bridge Deck Grooving (Special) on the approach slab, see NW Flyover plans. (SN 016-1705)



**NORTH FACE ELEVATION  
(Facing South)**



**TYPICAL MSE BARRIER RAIL SECTION**

**DETAIL A**

0161720-60W28-502-CenNote



USER NAME = dunkerleyb	DESIGNED - DEV	REVISED
PLOT SCALE = N.T.S.	CHECKED - ATB	REVISED
PLOT DATE = 4/28/2014	DRAWN - BRD	REVISED
	CHECKED - EJO	REVISED

**STATE OF ILLINOIS  
DEPARTMENT OF TRANSPORTATION**

**NORTH & EAST ELEVATIONS  
STRUCTURE NO. 016-1720**

F.A.I. R.E. 90/94/290	SECTION 2013-010R	COUNTY COOK	TOTAL SHEETS 747	SHEET NO. 520
CONTRACT NO. 60W28			ILLINOIS FED. AID PROJECT -NUMBER-	

SHEET NO. RW1-02 OF RW1-17 SHEETS