

GROUND IMPROVEMENT PERFORMANCE REQUIREMENTS:

Minimum factor of safety for global stability shall be 1.5.

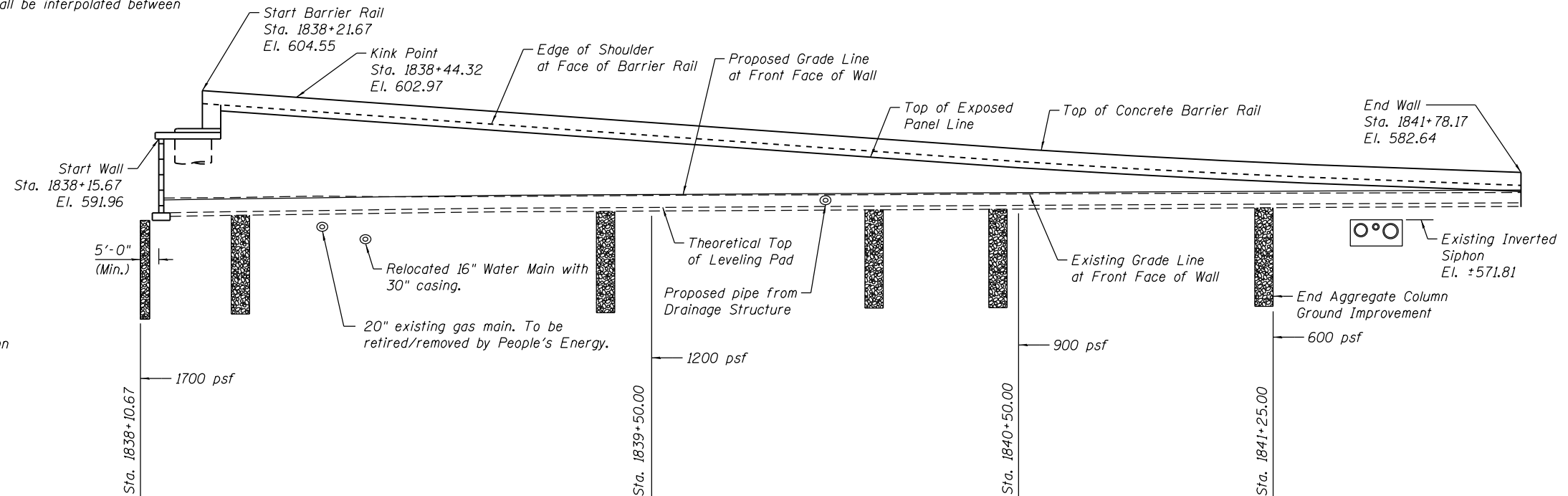
Settlement during construction shall not exceed 3 inches, and settlement after completion of wall and pavement construction shall not exceed 1 inch.

Minimum factor of safety for Equivalent Uniform Service Bearing Pressure shall be 2.5.

Equivalent Uniform Service Bearing Pressure shall be interpolated between the values shown.

NOTES:

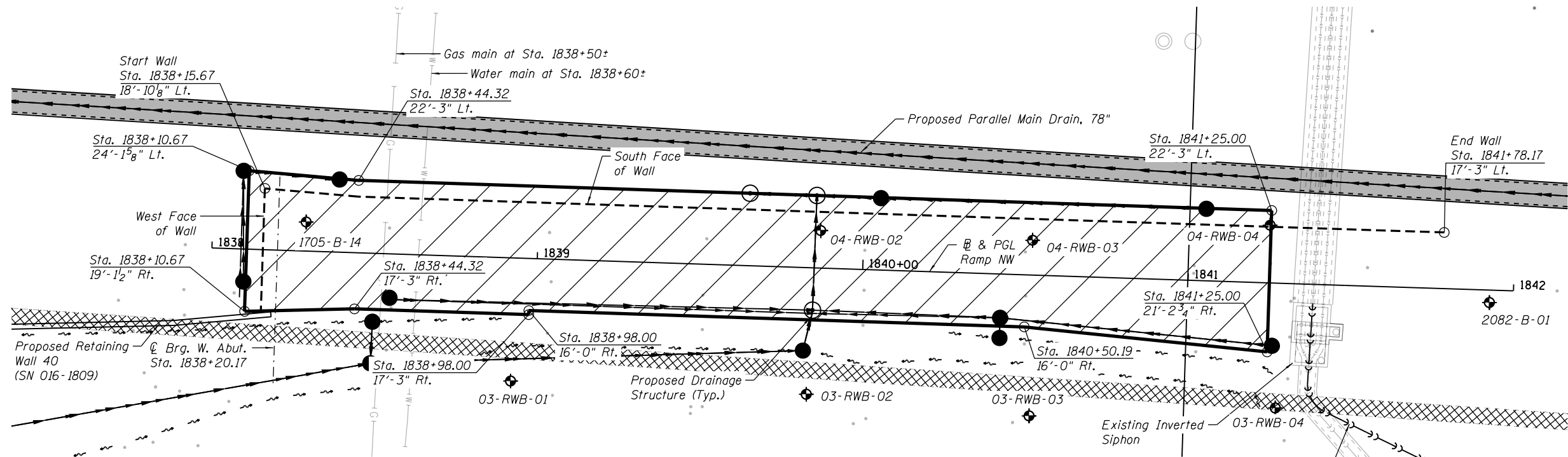
1. Aggregate Column Ground Improvement shall be designed by the Contractor in accordance with special provision for Aggregate Column Ground Improvement.
2. Aggregate Column Ground Improvement for Retaining Wall 3 (SN 016-1722) covers approximately 12,400 Sq. Ft.
3. See sheet RW3-03 for section views of ground improvement.
4. Aggregate columns shall be spaced to avoid conflict with existing utilities to remain and proposed abutment foundations.
5. Top of Aggregate Columns is equal to lowest excavation limit or existing grade line, whichever is lower.



LEGEND:

- Soil Boring Location
- Limits of Aggregate Column Ground Improvement
- Existing Tunnel to be Bulkheaded (by others)
- Existing Gas Main
- Existing Water Main
- Proposed Siphon (by others)
- Proposed Drainage System

EQUIVALENT UNIFORM SERVICE BEARING PRESSURE
(At top of ground improvement)



BILL OF MATERIAL

Item	Unit	Total
Aggregate Column Ground Improvement	L. Sum	0.32

PLAN



USER NAME = dunkerleyb	DESIGNED - DEV	REVISED
PLOT SCALE = N.T.S.	CHECKED - ATB	REVISED
PLOT DATE = 4/28/2014	DRAWN - BRD	REVISED
	CHECKED - EJO	REVISED

STATE OF ILLINOIS
DEPARTMENT OF TRANSPORTATION

AGGREGATE COLUMN GROUND IMPROVEMENT DETAILS
STRUCTURE NO. 016-1722

SHEET NO. RW3-080F RW3-12 SHEETS

F.A.I. RTE. 90/94/290	SECTION 2013-010R	COUNTY COOK	TOTAL SHEETS 747	SHEET NO. 552
CONTRACT NO. 60W28			ILLINOIS FED. AID PROJECT -NUMBER-	

0161722-60W28-508-SubStructure