

07-12-2019 LETTING ITEM 043

FOR INDEX OF SHEETS, SEE SHEET NO. 2

STATE OF ILLINOIS  
DEPARTMENT OF TRANSPORTATION

F.A.I. NO.	SECTION	COUNTY	TOTAL SHEETS	SHEET NO.
57	(18-20)RS-2	CUMBERLAND	27	1
		ILLINOIS	CONTRACT NO. 74461	

# PROPOSED HIGHWAY PLANS

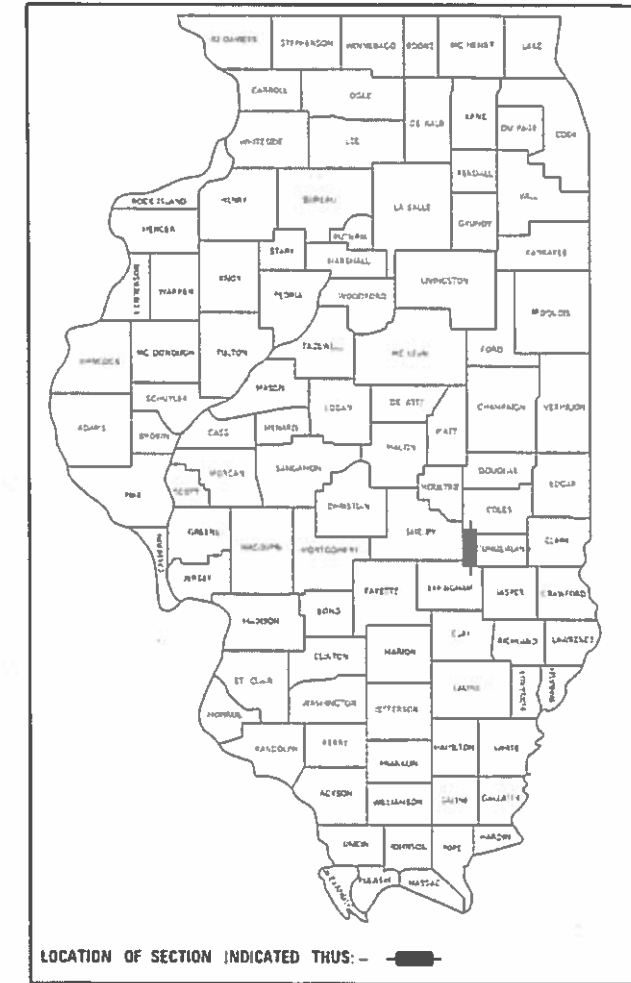
FAI ROUTE 57 (I-57)  
SECTION (18-20)RS-2  
PROJECT NHPP 4F7I(733)  
INTERSTATE RESURFACING  
CUMBERLAND COUNTY

C-97-103-10

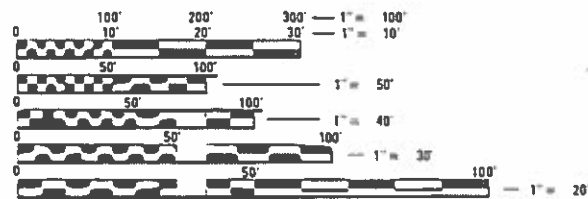
FAI ROUTE 57  
SECTION (18-20)RS-2  
ENDS STA. 286 + 88.75

CURRENT TRAFFIC DATA  
2017 ADT 19,600  
P.V. % 69.77  
S.U. % 3.44  
M.U. % 26.79

BRIDGE OMISSIONS:  
STRUCTURE # 018-0006 (NORTHBOUND)  
STA. 250 + 74.15 TO STA. 251 + 94.65  
STRUCTURE # 018-0005 (SOUTHBOUND)  
STA. 250 + 23.35 TO STA. 251 + 43.85



FAI ROUTE 57  
SECTION (18-20)RS-2  
BEGINS STA. 119 + 16.79



FULL SIZE PLANS HAVE BEEN PREPARED USING STANDARD ENGINEERING SCALES. REDUCED SIZED PLANS WILL NOT CONFORM TO STANDARD SCALES. IN MAKING MEASUREMENTS ON REDUCED PLANS, THE ABOVE SCALES MAY BE USED.

J.U.L.I.E.  
JOINT UTILITY LOCATION INFORMATION FOR EXCAVATORS  
1-800-892-0123  
OR 811

PROJECT ENGINEER - BRIAN LEWIS  
PROJECT MANAGER - MYRA OLTMAN

CONTRACT NO. 74461

GROSS LENGTH = 16,666.43 FEET = 3.15 MILES  
NET LENGTH = 16,544.93 FEET = 3.13 MILES

STATE OF ILLINOIS  
DEPARTMENT OF TRANSPORTATION

SUBMITTED MAY 30 2019

Jeffrey R. Meyer REGIONAL ENGINEER

June 14 2019

cc E A ETK ENGINEER OF DESIGN AND ENVIRONMENT

June 14 2019

Paul J. [Signature] DIRECTOR OF HIGHWAYS PROJECT IMPLEMENTATION

PRINTED BY THE AUTHORITY  
OF THE STATE OF ILLINOIS

GENERAL NOTES

THIS PROJECT IS LOCATED ON FAI ROUTE 57 (I-57) IN CUMBERLAND COUNTY, FROM THE NEOGA INTERCHANGE EXTENDING NORTH FOR 3.2 MILES TO THE COLES COUNTY LINE. THE WORK INCLUDED IN SECTION (18-20)RS-2 CONSISTS OF PAVEMENT PATCHING, HMA SURFACE REMOVAL TO BARE CONCRETE AND HMA RESURFACING OF MAINLINE PAVEMENT, HMA SHOULDER REMOVAL AND REPLACEMENT, HMA SHOULDER WIDENING, AGGREGATE SHOULDERS, HMA VARIABLE DEPTH SURFACE REMOVAL AND RESURFACING THE NORTH INTERCHANGE RAMPS, PAVEMENT MARKING, TRAFFIC CONTROL, AND ANY OTHER WORK NECESSARY TO COMPLETE THIS SECTION.

IN ADDITION TO THE REQUIREMENTS IN ARTICLE 701.15(j), A LAPTOP COMPUTER SHALL BE SUPPLIED BY THE CONTRACTOR.

DELINEATORS WILL NOT BE PLACED ON TANGENT SECTIONS OF THE MAINLINE.

THE MATERIAL FROM THE EXCAVATION AND GRADING OF EXISTING SHOULDERS SHALL BE DISPOSED OF OFF THE JOB SITE IN ACCORDANCE TO ARTICLE 202.03 COST SHALL BE INCLUDED IN THIS PAY ITEM.

THE MATERIAL USED FOR AGGREGATE WEDGE SHOULDERS, TYPE B SHALL BE CRUSHED STONE, CRUSHED CONCRETE OR RAP. THE MATERIAL USED FOR AGGREGATE SURFACE COURSE, TYPE B SHALL BE CRUSHED STONE OR CRUSHED CONCRETE.

THE COST OF REMOVAL OF EXISTING GUARD POSTS SHALL BE INCLUDED IN THE CONTRACT UNIT PRICE PER EACH FOR GUARD POSTS AND NO ADDITIONAL COMPENSATION WILL BE ALLOWED.

THE TOTAL QUANTITY OF PREFORMED PLASTIC PAVEMENT MARKING, TYPE B - LINE 6" CONSISTS OF 66,830 FEET OF WHITE AND 8,030 FEET OF YELLOW.

THE LONGITUDINAL JOINT SEALANT SHALL BE APPLIED TO THE TOP LIFT OF THE POLYMERIZED HMA BINDER COURSE N90 ONLY.

THE PAY FOR PERFORMANCE USING PERCENT WITHIN LIMITS. JOBSITE SAMPLING SPECIAL PROVISION SHALL APPLY TO THE FOLLOWING HOT MIX ASPHALT PAY ITEMS:

- POLYMERIZED HMA SURFACE COURSE, STONE MATRIX ASPHALT, N80
- POLYMERIZED HMA BINDER COURSE, N90
- HMA BINDER COURSE, N90

THE BOTTOM LIFT (VARIABLE DEPTH) OF N90 BINDER SHOWN IN THE PROPOSED PAVING TRANSITION DETAILS WILL NOT BE TESTED BASED ON THE PAY FOR PERFORMANCE SPECIAL PROVISION.

THE FOLLOWING RATES OF APPLICATION HAVE BEEN USED IN CALCULATING PLAN QUANTITIES:

- AGGREGATE SHOULDERS 2.05 TON/CU YD
- HOT-MIX ASPHALT 112 LBS/SO YD/INCH
- STONE MATRIX HOT-MIX ASPHALT 130 LBS/SO YD/INCH

INDEX OF SHEETS

SHEET NO.	TITLE
1	COVER SHEET
2	GENERAL NOTES, INDEX OF SHEETS & HIGHWAY STANDARDS
3-6	SUMMARY OF QUANTITIES
7-8	TYPICAL SECTIONS
9	PAVING SCHEDULES
10-11	SHOULDER SCHEDULES
12	GUARDRAIL SCHEDULE
13	GUARDRAIL REMOVAL, PAVEMENT BLACKOUT TAPE AND TREE SCHEDULES
14	PAVEMENT MARKING SCHEDULE
15-18	PLAN SHEETS
19-21	STAGING TYPICAL SECTIONS
22	MISCELLANEOUS DETAILS
23-25	PAVING DETAILS
26	RAMP CLOSURE DETAIL
27	DISTRICT 7 DETAIL NO. 78000002

THE FOLLOWING STANDARDS ARE A PART OF THESE PLANS AND ARE INCLUDED FOLLOWING THE LAST NUMBERED SHEET OF THE PLANS.

- 000001-07 STANDARD SYMBOLS, ABBREVIATIONS, AND PATTERNS
- 001001-02 AREAS OF REINFORCEMENT BARS
- 001006 DECIMAL OF AN INCH AND OF A FOOT
- 442101-09 CLASS B PATCHES
- 630001-12 STEEL PLATE BEAM GUARDRAIL
- 630201-07 PCC/HMA STABILIZATION AT STEEL PLATE BEAM GUARDRAIL
- 631011-10 TRAFFIC BARRIER TERMINAL, TYPE 2
- 631032-09 TRAFFIC BARRIER TERMINAL, TYPE 6A
- 631033-07 TRAFFIC BARRIER TERMINAL, TYPE 6B
- 635001-02 DELINEATORS
- 642001-02 SHOULDER RUMBLE STRIPS, 16 IN.
- 643001-02 SAND MODULE IMPACT ATTENUATORS
- 667101-02 PERMANENT SURVEY MARKERS
- 668001-01 METHOD OF RESETTING U.S. GEOLOGIC SURVEY AND NATIONAL GEODETIC SURVEY BENCHMARKS
- 701101-05 OFF-ROAD OPERATIONS, MULTILANE, 15' TO 24' FROM PAVEMENT EDGE
- 701106-02 OFF-ROAD OPERATIONS, MULTILANE, MORE THAN 15' AWAY
- 701400-09 APPROACH TO LANE CLOSURE, FREEWAY/EXPRESSWAY
- 701401-12 LANE CLOSURE, FREEWAY/EXPRESSWAY
- 701406-12 LANE CLOSURE, FREEWAY/EXPRESSWAY, DAY OPERATIONS ONLY
- 701411-09 LANE CLOSURE, MULTILANE, AT ENTRANCE OR EXIT RAMP, FOR SPEEDS >=45 MPH
- 701451-05 RAMP CLOSURE, FREEWAY/EXPRESSWAY
- 701456-05 PARTIAL EXIT RAMP CLOSURE, FREEWAY/EXPRESSWAY
- 701901-08 TRAFFIC CONTROL DEVICES
- 720011-01 METAL POSTS FOR SIGNS, MARKERS AND DELINEATORS
- 725001-01 OBJECT AND TERMINAL MARKERS
- 780001-05 TYPICAL PAVEMENT MARKINGS
- 781001-04 TYPICAL APPLICATIONS RAISED REFLECTIVE PAVEMENT MARKERS
- 782006 GUARDRAIL AND BARRIER WALL REFLECTOR MOUNTING DETAILS

MATERIAL REQUIREMENTS APPLICATION	AC/PG	DESIGN AIR VOIDS	MIXTURE COMPOSITION	FRICTION AGGREGATE	QUALITY MANAGEMENT
POLYMERIZED HMA SURFACE COURSE, STONE MATRIX ASPHALT (2")	PG 76-22	4.0% @ N=80	IL - 12.5	MIXTURE E	PFP
POLYMERIZED HMA BINDER COURSE (2 1/4" TOP LIFT)	PG 70-22	4.0% @ N=90	IL - 19.0	N/A	PFP
HMA BINDER COURSE (2 1/4" BOTTOM LIFT)	PG 64-22	4.0% @ N=90	IL - 19.0	N/A	PFP
HMA SURFACE COURSE (1 1/2" @ RAMPS)	PG 64-22	4.0% @ N=90	IL - 9.5	MIXTURE C	QC/OA
HMA LEVEL BINDER, MACHINE METHOD, N90FG, (1 1/4" @ RAMPS)	PG 64-22	4.0% @ N=90	IL - 9.5FG	N/A	QC/OA
HMA SHOULDERS, 12" (TOP 1 1/2" LIFT)	PG 64-22	4.0% @ N=90	IL - 9.5	MIXTURE C	QC/OA
HMA SHOULDERS, 12" (BOTTOM LIFTS)	PG 64-22	4.0% @ N=90	IL - 19.0	N/A	QC/OA
INCIDENTAL HOT-MIX ASPHALT SURFACING	PG 64-22	4.0% @ N=90	IL - 9.5	MIXTURE C	QC/OA
HMA SHOULDERS, 2 1/4" (US 45 INTERCHANGE)	PG 64-22	4.0% @ N=90	IL - 9.5	MIXTURE C	QC/OA

MODIFIED: D:\paul\...  
 FILE NAME: ...

USER NAME = Oltmanm	DESIGNED -	REVISED -	<b>STATE OF ILLINOIS DEPARTMENT OF TRANSPORTATION</b>	<b>INDEX OF SHEETS, HIGHWAY STANDARDS AND GENERAL NOTES</b>			FAI RTE	SECTION	COUNTY	TOTAL SHEETS	SHEET NO.
PLOT SCALE = 100 0000 / in	DRAWN -	REVISED -					S7	(18-20)RS-2	CUMBERLAND	27	2
PLOT DATE = 6/20/2019	CHECKED -	REVISED -		SCALE: SHEET OF SHEETS STA TO STA.			CONTRACT NO. 74461				
	DATE -	REVISED -					ILLINOIS FED AID PROJECT				

80% FED  
20% TDC

80% FED  
20% TDC

SUMMARY OF QUANTITIES			TOTAL QUANTITIES	CONSTRUCTION TYPE CODE		
CODE NO	ITEM	UNIT		RURAL 0006		
20100110	TREE REMOVAL ( 6 TO 15 UNITS DIAMETER)	UNIT	293	293		
20100210	TREE REMOVAL ( OVER 15 UNITS DIAMETER)	UNIT	18	18		
20200600	EXCAVATING AND GRADING EXISTING SHOULDER	UNIT	333	333		
40600290	BITUMINOUS MATERIALS ( TACK COAT)	POUND	146434	146434		
40600647	LEVELING BINDER ( MACHINE METHOD), IL-9.5FG, N90	TON	409	409		
40600990	TEMPORARY RAMP	SQ YD	106.4	106.4		
40603090	HOT-MIX ASPHALT BINDER COURSE, IL-19.0, N90	TON	11189	11189		
40603153	POLYMERIZED HOT-MIX ASPHALT SURFACE COURSE, STONE MATRIX ASPHALT, N80	TON	11544	11544		
40603240	POLYMERIZED HOT-MIX ASPHALT BINDER COURSE, IL-19.0, N90	TON	11189	11189		
40603320	HOT-MIX ASPHALT SURFACE COURSE, MIX "C", N90	TON	491	491		
40800050	INCIDENTAL HOT-MIX ASPHALT SURFACING	TON	19	19		

SUMMARY OF QUANTITIES			TOTAL QUANTITIES	CONSTRUCTION TYPE CODE		
CODE NO	ITEM	UNIT		RURAL 0006		
44000151	HOT-MIX ASPHALT SURFACE REMOVAL, 1/2"	SQ YD	5846	5846		
44000155	HOT-MIX ASPHALT SURFACE REMOVAL, 1 1/2"	SQ YD	35088	35088		
44000157	HOT-MIX ASPHALT SURFACE REMOVAL, 2"	SQ YD	173	173		
44000189	HOT-MIX ASPHALT SURFACE REMOVAL, 10"	SQ YD	21053	21053		
44004250	PAVED SHOULDER REMOVAL	SQ YD	14801	14801		
44201043	CLASS B PATCHES, TYPE II, 16 INCH	SQ YD	1100	1100		
44201299	DOWEL BARS 1 1/2"	EACH	2580	2580		
44213200	SAW CUTS	FOOT	6108	6108		
48102100	AGGREGATE WEDGE SHOULDER, TYPE B	TON	4717	4717		
48203021	HOT-MIX ASPHALT SHOULDERS, 6"	SQ YD	4057	4057		
48203037	HOT-MIX ASPHALT SHOULDERS, 10"	SQ YD	43255	43255		
48203100	HOT-MIX ASPHALT SHOULDERS	TON	6901	6901		

REV. - MS

MODEL: Default  
 FILE: M:\aspc\p\highway\com.dta\illinois.gov\PWIDOT\Documents\DOT\_Offices\District\_7\Projects\74461\CADD\Drawings\CAD\Sheet\74461-ph-S00.dgn

USER NAME = steffennk	DESIGNED -	REVISED -
	DRAWN -	REVISED -
PLOT SCALE = 100.0000' / in.	CHECKED -	REVISED -
PLOT DATE = 5/30/2019	DATE -	REVISED -

**STATE OF ILLINOIS  
DEPARTMENT OF TRANSPORTATION**

**SUMMARY OF QUANTITIES**

SCALE: SHEET OF SHEETS STA. TO STA.

F.A.I. RTE.	SECTION	COUNTY	TOTAL SHEETS	SHEET NO.
57	(18-20)RS-2	CUMBERLAND	27	3
CONTRACT NO. 74461				
ILLINOIS FED. AID PROJECT				

80% FED  
20% TDC

80% FED  
20% TDC

SUMMARY OF QUANTITIES			TOTAL QUANTITIES	CONSTRUCTION TYPE CODE		
CODE NO	ITEM	UNIT		RURAL 0006		
* 6300001	STEEL PLATE BEAM GUARDRAIL, TYPE A, 6 FOOT POSTS	FOOT	3037.5	3037.5		
* 6310045	TRAFFIC BARRIER TERMINAL, TYPE 2	EACH	4	4		
* 6310087	TRAFFIC BARRIER TERMINAL, TYPE 6A	EACH	2	2		
* 6310089	TRAFFIC BARRIER TERMINAL, TYPE 6B	EACH	4	4		
* 63100167	TRAFFIC BARRIER TERMINAL, TYPE 1 (SPECIAL) TANGENT	EACH	14	14		
63200310	GUARDRAIL REMOVAL	FOOT	2702	2702		
* 63400105	GUARD POSTS	EACH	18	18		
* 63500105	DELINEATORS	EACH	37	37		
64200116	SHOULDER RUMBLE STRIPS, 16 INCH	FOOT	65188	65188		
64300450	IMPACT ATTENUATORS (NON-REDIRECTIVE), TEST LEVEL 3	EACH	4	4		
67000400	ENGINEER'S FIELD OFFICE, TYPE A	CAL MO	8	8		
67000600	ENGINEER'S FIELD LABORATORY	CAL MO	8	8		
67100100	MOBILIZATION	LSUM	1	1		

SUMMARY OF QUANTITIES			TOTAL QUANTITIES	CONSTRUCTION TYPE CODE		
CODE NO	ITEM	UNIT		RURAL 0006		
70100420	TRAFFIC CONTROL AND PROTECTION, STANDARD 701411	EACH	2	2		
70100700	TRAFFIC CONTROL AND PROTECTION, STANDARD 701406	L SUM	1	1		
70100800	TRAFFIC CONTROL AND PROTECTION, STANDARD 701401	L SUM	1	1		
70100825	TRAFFIC CONTROL AND PROTECTION, STANDARD 701456	L SUM	1	1		
70103815	TRAFFIC CONTROL SURVEILLANCE	CAL DAY	28	28		
70107007	PAVEMENT MARKING BLACKOUT TAPE, 7"	FOOT	9000	9000		
70107025	CHANGEABLE MESSAGE SIGN	CAL DA	28	28		
70300100	SHORT TERM PAVEMENT MARKING	FOOT	6268	6268		
70300150	SHORT TERM PAVEMENT MARKING REMOVAL	SO FT	2090	2090		
70300240	TEMPORARY PAVEMENT MARKING - LINE 6"	FOOT	81473	81473		
70300250	TEMPORARY PAVEMENT MARKING - LINE 8"	FOOT	867	867		

\* SPECIALTY ITEM

REV. - MS

MODEL: Default  
FILE NAME: p:\blair\com\dot\_illinois\pww\DOT\Documents\DOT\_Offices\District\_7\Projects\7461\CADD\DATA\CAD\Sheet\7461-SPH-S00.dgn

USER NAME = steffenmk	DESIGNED -	REVISED -
	DRAWN -	REVISED -
PLOT SCALE = 100.0000' / in.	CHECKED -	REVISED -
PLOT DATE = 5/30/2019	DATE -	REVISED -

STATE OF ILLINOIS  
DEPARTMENT OF TRANSPORTATION

SUMMARY OF QUANTITIES

SCALE: SHEET OF SHEETS STA. TO STA.

FAI RTE.	SECTION	COUNTY	TOTAL SHEETS	SHEET NO.
57	(18-20)RS-2	CUMBERLAND	27	4
CONTRACT NO. 74461				
ILLINOIS FED. AID PROJECT				

80% FED  
20% TDC

80% FED  
20% TDC

SUMMARY OF QUANTITIES			TOTAL QUANTITIES	CONSTRUCTION TYPE CODE		
CODE NO	ITEM	UNIT		RURAL 0006		
* 72501000	TERMINAL MARKER - DIRECT APPLIED	EACH	14	14		
* 78003100	PREFORMED PLASTIC PAVEMENT MARKING, TYPE B - LETTERS AND SYMBOLS	SO FT	56	56		
* 78003130	PREFORMED PLASTIC PAVEMENT MARKING, TYPE B - LINE 6"	FOOT	81473	81473		
* 78003140	PREFORMED PLASTIC PAVEMENT MARKING, TYPE B - LINE 8"	FOOT	867	867		
* 78003150	PREFORMED PLASTIC PAVEMENT MARKING, TYPE B - LINE 12"	FOOT	121	121		
* 78003180	PREFORMED PLASTIC PAVEMENT MARKING, TYPE B - LINE 24"	FOOT	28	28		
* 78100100	RAISED REFLECTIVE PAVEMENT MARKER	EACH	909	909		
* 78200005	GUARDRAIL REFLECTORS, TYPE A	EACH	56	56		
* A2001016	TREE, ACER RUBRUM (RED MAPLE), 2" CALIPER, BALLED AND BURLAPPED	EACH	4	4		
* A2006516	TREE, QUERCUS BICOLOR (SWAMP WHITE OAK), 2" CALIPER, BALLED AND BURLAPPED	EACH	4	4		

SUMMARY OF QUANTITIES			TOTAL QUANTITIES	CONSTRUCTION TYPE CODE		
CODE NO	ITEM	UNIT		RURAL 0006		
* B2001116	TREE, CERCIS CANADENSIS (EASTERN REDBUD), 2" CALIPER, TREE FORM, BALLED AND BURLAPPED	EACH	3	3		
* D2002972	EVERGREEN, PINUS STROBUS (EASTERN WHITE PINE), 6' HEIGHT, BALLED AND BURLAPPED	EACH	20	20		
X4401198	HOT-MIX ASPHALT SURFACE REMOVAL, VARIABLE DEPTH	SO YD	88805	88805		
* X6310214	TRAFFIC BARRIER TERMINAL, TYPE 6 (SPECIAL)	EACH	4	4		
X6340205	GUARD POSTS REMOVAL	EACH	13	13		
X6350120	DELINEATOR REMOVAL	EACH	113	113		
X6430120	REMOVE IMPACT ATTENUATORS, NO SALVAGE	EACH	4	4		
X7010225	TRAFFIC CONTROL & PROTECTION, STANDARD 701451, SPECIAL	LSUM	1	1		
* X7830060	GROOVING FOR RECESSED PAVEMENT MARKING, LETTERS AND SYMBOLS	SO FT	56	56		
* X7830074	GROOVING FOR RECESSED PAVEMENT MARKING 7"	FOOT	81473	81473		
* X7830076	GROOVING FOR RECESSED PAVEMENT MARKING 9"	FOOT	867	867		
* X7830078	GROOVING FOR RECESSED PAVEMENT MARKING 13"	FOOT	121	121		

\* SPECIALTY ITEM

REV. - MS

MODEL: Default; FILE NAME: p:\blair\com.dct.illinois.gov\PWIDOT\Documents\DOT\_Offices\District\_7\Projects\74461\CADDData\CAD\Sheet\74461-SPH-S00.dgn

USER NAME = steffenmk	DESIGNED -	REVISED -
	DRAWN -	REVISED -
PLOT SCALE = 100.0000' / in.	CHECKED -	REVISED -
PLOT DATE = 5/30/2019	DATE -	REVISED -

STATE OF ILLINOIS  
DEPARTMENT OF TRANSPORTATION

SUMMARY OF QUANTITIES

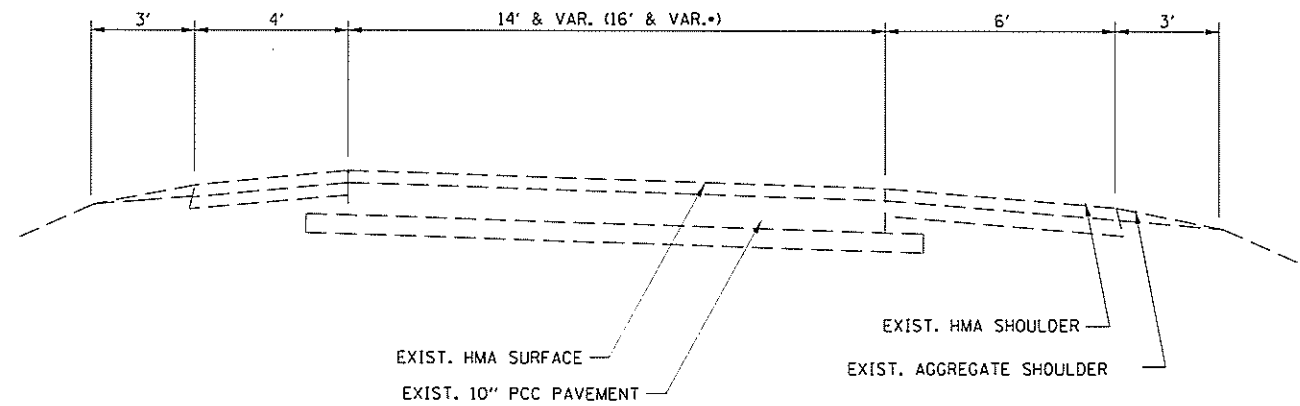
SCALE: SHEET OF SHEETS STA. TO STA.

FAI RTE.	SECTION	COUNTY	TOTAL SHEETS	SHEET NO.
57	(18-20)RS-2	CUMBERLAND	27	5
CONTRACT NO. 74461				
ILLINOIS FED. AID PROJECT				



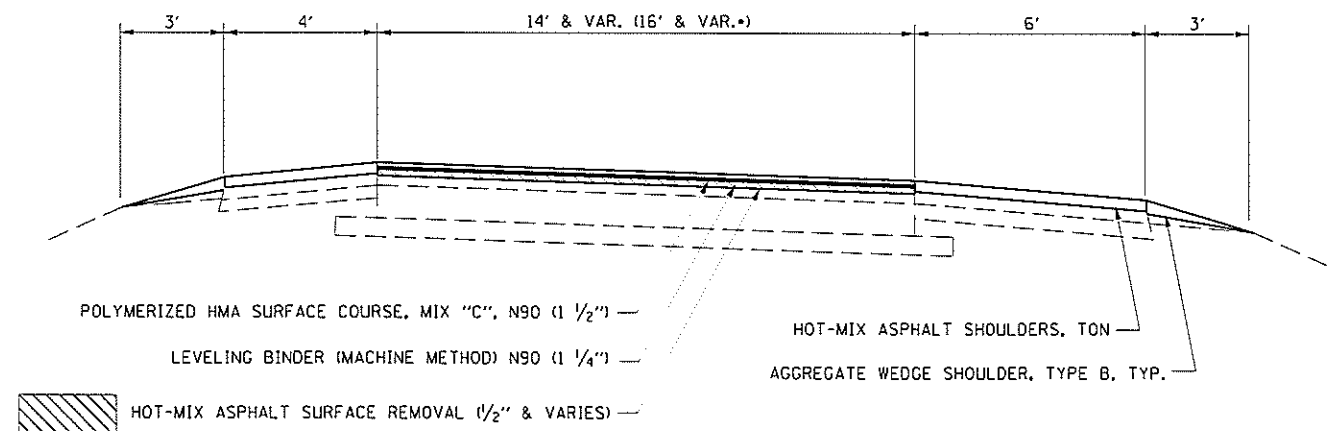
**US ROUTE 45 RAMP  
EXISTING TYPICAL SECTION**

IL RTE 57 RAMP D STA. 1+00 TO 11+00  
IL RTE 57 RAMP B STA. 3+00 TO 18+00



**US ROUTE 45 RAMP  
PROPOSED TYPICAL SECTION**

IL RTE 57 RAMP D STA. 1+00 TO 11+00  
IL RTE 57 RAMP B STA. 3+00 TO 18+00



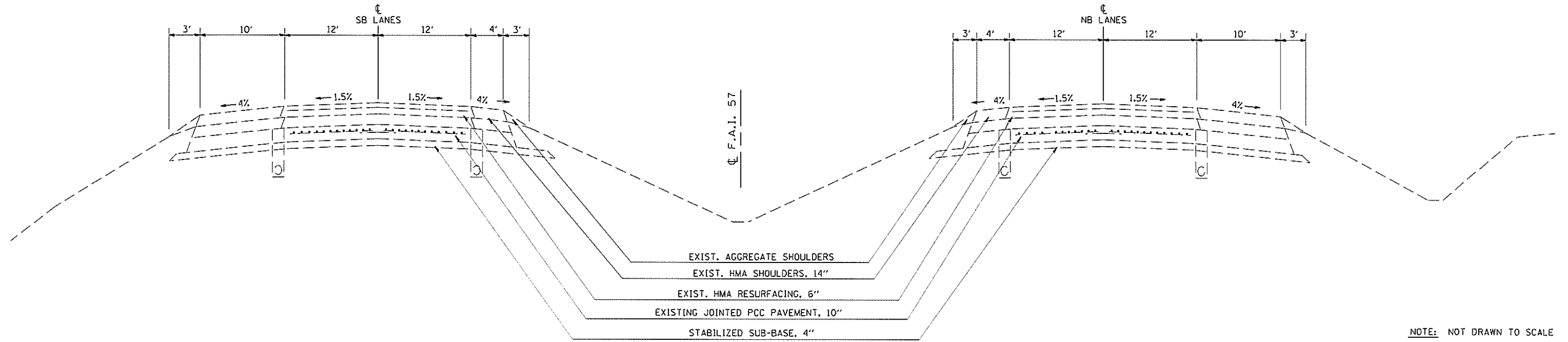
NOTE: NOT TO SCALE

FILE NAME *	USER NAME = Dismann	DESIGNED -	REVISED -	<b>STATE OF ILLINOIS DEPARTMENT OF TRANSPORTATION</b>	<b>F.A.I 57/US ROUTE 45 RAMP TYPICAL SECTION</b>	F.A.I. RTE.	SECTION	COUNTY	TOTAL SHEETS	SHEET NO.	
path: \\plmroom\dtd\illinois\go\p\DOT Documents\DOT Offices\District 7\Projects\74461	CDRAWN: CADsheets\DOT\4481-shr\typicals.dgn	CHECKED -	REVISED -			57	118-2018-2	CUMBERLAND	27	7	
Default	PLOT SCALE = 100.0000 in.	DATE -	REVISED -			CONTRACT NO. 74461					
	PLOT DATE = 6/19/2019					ILLINOIS FED. AID PROJECT					

## EXISTING TYPICAL CROSS SECTION

**F.A.I. 57**

STATION 119+32.76 TO STATION 286+88.75

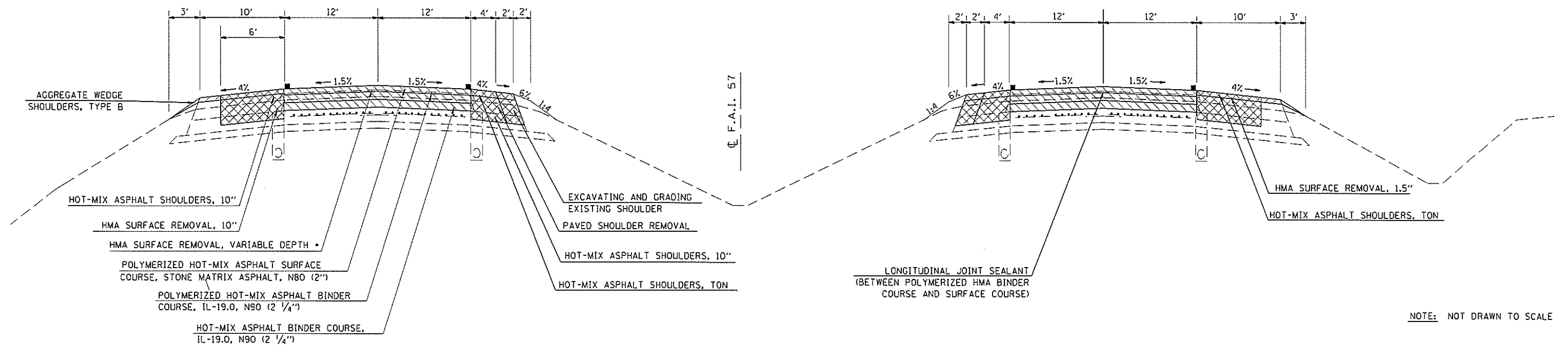


NOTE: NOT DRAWN TO SCALE

## PROPOSED TYPICAL CROSS SECTION

**F.A.I. 57**

STATION 119+32.76 TO STATION 286+88.75



NOTE: NOT DRAWN TO SCALE

FILE NAME :	USER NAME : D11unamm	DESIGNED -	REVISED -	<b>STATE OF ILLINOIS DEPARTMENT OF TRANSPORTATION</b>	<b>F.A.I. 57 TYPICAL SECTIONS</b>	F.A.I. RTE.	SECTION	COUNTY	TOTAL SHEETS	SHEET NO.
px: 'planroom.dot,illinois.gov:PWIDDT Docu	ments: IDOT Offices \District 7 Projects \4481	CBRAWN CAD sheets D774481-shc-typicals.dwg	REVISED -			57	(18-201RS-2	CUMBERLAND	27	8
Default	PLOT SCALE = 100.0000 in.	CHECKED -	REVISED -							CONTRACT NO. 74461
	PLOT DATE = 6-18-2019	DATE -	REVISED -			SCALE:	SHEET	OF	SHEETS	STA. TO STA.
										ILLINOIS FED. AID PROJECT





HMA SHOULDER AND AGGREGATE SHOULDER SCHEDULE ON MAINLINE - NORTHBOUND

STATION	TO	STATION	LANE	PROPOSED HMA SHOULDER FULL DEPTH WIDTH	LENGTH	HOT-MIX ASPHALT SHOULDERS	HOT-MIX ASPHALT SHOULDERS, 10"	HOT-MIX ASPHALT SURFACE REMOVAL, 10"	HOT-MIX ASPHALT SURFACE REMOVAL, 1 1/2"	PAVED SHOULDER REMOVAL	BITUMINOUS MATERIALS (TACK COAT) SURFACE 2" SHOULDERS	BITUMINOUS MATERIALS (TACK COAT) BINDER 1ST LIFT	BITUMINOUS MATERIALS (TACK COAT) BINDER 2ND LIFT	BITUMINOUS MATERIALS (TACK COAT) BINDER 3RD LIFT	EXCAVATING AND GRADING EXISTING SHOULDER	AGGREGATE WEDGE SHOULDERS, TYPE B
				FOOT	FOOT	TON	SQ YD	SQ YD	SQ YD	SQ YD	POUND	POUND	POUND	POUND	UNIT	TON
NORTHBOUND I-57																
119+32.76	TO	127+17.20	PL	6.0	784.4	58.6	523.0			348.6	117.7	235.3	117.7	117.7	7.8	90.1
127+17.20	TO	137+61.05	PL	6.0	1043.9	77.9	695.9			463.9	156.6	313.2	156.6	156.6	10.4	119.9
137+61.05	TO	165+35.00	PL	6.0	2774.0	207.1	1849.3			1232.9	416.1	832.2	416.1	416.1	27.7	318.6
165+35.00	TO	174+63.96	PL	6.0	929.0	69.4	619.3			412.9	139.3	278.7	139.3	139.3	9.3	106.7
174+63.96	TO	186+00.00	PL	6.0	1136.0	84.8	757.4			504.9	170.4	340.8	170.4	170.4	11.4	130.5
186+00.00	TO	230+81.38	PL	6.0	4481.4	334.6	2987.6			1991.7	672.2	1344.4	672.2	672.2	44.8	514.6
230+81.38	TO	250+74.15	PL	6.0	1992.8	148.8	1328.5			885.7	298.9	597.8	298.9	298.9	19.9	228.8
250+74.15	TO	251+94.65	PL	6.0												
251+94.65	TO	286+88.75	PL	6.0	3494.1	260.9	2329.4			1552.9	524.1	1048.2	524.1	524.1	34.9	401.3
119+32.76	TO	127+17.20	DL	6.0	784.4	97.6	523.0	523.0				235.3	117.7	117.7		
127+17.20	TO	137+61.05	DL	6.0												
137+61.05	TO	165+35.00	DL	6.0	2774.0	345.2	1849.3	1849.3				832.2	416.1	416.1		
165+35.00	TO	174+63.96	DL	6.0	929.0	115.6	619.3	619.3				278.7	139.3	139.3		
174+63.96	TO	186+00.00	DL	6.0	1136.0	141.4	757.4	757.4				340.8	170.4	170.4		
186+00.00	TO	230+81.38	DL	6.0	4481.4	557.7	2987.6	2987.6				1344.4	672.2	672.2		
230+81.38	TO	250+74.15	DL	6.0	1992.8	248.0	1328.5	1328.5				597.8	298.9	298.9		
250+74.15	TO	251+94.65	DL	6.0												
251+94.65	TO	286+88.75	DL	6.0	3494.1	434.8	2329.4	2329.4				1048.2	524.1	524.1		
119+32.76	TO	127+17.20	DL	10.0				871.6			392.2					18.7
127+17.20	TO	137+61.05	DL	10.0												
137+61.05	TO	165+35.00	DL	10.0				3082.2			1387.0					66.0
165+35.00	TO	174+63.96	DL	10.0				1032.2			464.5					22.1
174+63.96	TO	186+00.00	DL	10.0				1262.3			568.0					27.0
186+00.00	TO	230+81.38	DL	10.0				4979.3			2240.7					106.7
230+81.38	TO	250+74.15	DL	10.0				2214.2			996.4					47.4
250+74.15	TO	251+94.65	DL	10.0												
251+94.65	TO	286+88.75	DL	10.0				3882.3			1747.1					83.2
NORTHBOUND I-57 TOTALS					32227.3	3182.4	21484.9	10394.5	17324.1	7393.5	10291.2	9668.0	4834.0	4834.0	166.2	2281.6

M:\p01 - Detail - 2019\18-201RS-2\Cumberland\DOT Office\Subcontract 2\Projects\18-201RS-2\Cumberland\DOT Office\Subcontract 2\18-201RS-2\_Schedule.dwg  
 User: oltmanmm  
 Date: 6/18/2019

USER NAME = oltmanmm	DESIGNED -	REVISED -
DRAWN -	CHECKED -	REVISED -
PLOT SCALE = 100 0000 / 1" = 1'	DATE -	REVISED -
PLOT DATE = 6/18/2019		

**STATE OF ILLINOIS  
DEPARTMENT OF TRANSPORTATION**

**MAINLINE HMA SHOULDER AND  
AGGREGATE SHOULDER SCHEDULE**

SCALE: SHEET OF SHEETS STA. TO STA.

F A I R T E	SECTION	COUNTY	TOTAL SHEETS	SHEET NO.
57	18-201RS-2	CUMBERLAND	27	10
CONTRACT NO. 74461				
ILLINOIS FED AID PROJECT				





GUARDRAIL REMOVAL				
STATION	TO	STATION	SIDE (LT/RT)	GUARDRAIL REMOVAL (FOOT)
NORTHBOUND I-57				
163+40	TO	165+42	RT	200.0
172+54	TO	174+94	RT	232.0
185+14	TO	187+02	RT	187.0
228+98	TO	231+10	RT	200.0
248+20	TO	250+61	LT	231.0
249+31	TO	250+84	RT	153.0
NORTHBOUND TOTAL				1203.0
SOUTHBOUND I-57				
118+92	TO	119+98	LT	105.0
119+02	TO	121+50	RT	244.0
165+50	TO	167+50	LT	187.0
174+42	TO	176+50	LT	207.0
184+80	TO	187+20	LT	225.0
230+58	TO	232+02	LT	144.0
251+33	TO	253+07	LT	156.0
251+56	TO	253+97	RT	231.0
SOUTHBOUND TOTAL				1499.0
TOTALS				2702

NOTE: TERMINALS ARE INCLUDED IN MEASUREMENTS

GUARD POSTS & GUARD POST REMOVAL		
STATION	GUARD POSTS EACH	GUARD POST REMOVAL EACH
FAI 57 - MEDIAN		
141+19	6	4.0
175+39	6	4.0
231+89	6	5.0
TOTALS	18	13

PAVEMENT MARKING BLACKOUT TAPE, 7"				
	STAGE 1	STAGE 2	STAGE 3	TOTAL
SOUTH OF STATION 119+32.76 (PER SETUP) =	1500	1500	1500	4500
NORTH OF STATION 286+88.75 (PER SETUP) =	1500	1500	1500	4500
TOTAL				9000

TREE REMOVAL SCHEDULE		
STATION	TREE REMOVAL 6" TO 15" DIAMETER (UNIT DIA)	TREE REMOVAL OVER 15" DIAMETER (UNIT DIA)
NORTHBOUND I-57		
251+98.0	8.9	
251+98.0	6.0	
251+98.0	8.3	
NORTHBOUND TOTAL	23.2	0.0
SOUTHBOUND I-57		
241+81.0	8.3	
241+81.0	9.2	
241+81.0	8.3	
242+13.0		17.2
242+25.0	12.4	
242+35.0	8.0	
242+35.0	8.0	
242+48.0	9.9	
242+54.0	8.3	
242+58.0	9.5	
242+64.0	11.8	
242+64.0	10.8	
242+64.0	6.4	
242+78.0	11.1	
242+96.0	7.3	
243+44.0	9.9	
243+44.0	9.2	
243+76.0	10.2	
244+16.0	14.0	
244+27.0	9.9	
244+62.0	11.8	
244+92.0	10.5	
244+92.0	6.0	
244+92.0	8.6	
245+23.0	13.7	
251+09.0	9.2	
251+09.0	13.7	
251+09.0	13.7	
SOUTHBOUND TOTAL	269.6	17.2
TOTALS	293.0	18.0

TREE REPLACEMENT SCHEDULE				
STATION	TREE, ACER RUBRUM (RED MAPLE), 2" CALIPER, BALLED AND BURLAPPED	TREE, QUERCUS BICOLOR (SWAMP WHITE OAK), 2" CALIPER VALLED AND BURLAPED	TREE, CERCIS CANADENSIS (EASTERN REDBUD), 2" CALIPER, TREE FORM, BALLED AND BURLAPPED	EVERGREEN, PINUS STROBUS (EASTERN WHITE PINE), 6' HEIGHT, BALLED AND BURLAPPED
NORTHBOUND I-57				
121+00.0	1			
121+35.0	1			
122+00.0		1		
122+50.0		1		
123+80.0			1	
NB TOTALS	2	2	1	0
SOUTHBOUND I-57				
121+00.0		1		
121+35.0	1			
121+50.0	1			
122+00.0		1		
122+50.0			1	
123+80.0			1	
207+00.0				1
207+35.0				1
207+70.0				1
208+05.0				1
208+40.0				1
208+75.0				1
209+10.0				1
209+45.0				1
209+80.0				1
210+15.0				1
210+50.0				1
210+85.0				1
211+20.0				1
211+55.0				1
211+90.0				1
212+25.0				1
212+60.0				1
212+95.0				1
213+30.0				1
213+65.0				1
SB TOTALS	2	2	2	20
TREE TOTALS	4	4	3	20

\* TREES PLANTED IN THE GORE AREA AS SPECIFIED BY THE ENGINEER

\*\* TREES PLANTED 120' RIGHT OF CENTERLINE OF MEDIAN

MODFI: D:\dwg\illinois\pavement\pavement\_blackout\_tape\_7.dwg  
 FILE NAME: I:\pavement\_blackout\_tape\_7.dwg  
 PLOT DATE: 6/18/2019

USER NAME = D:\mianmm	DESIGNED -	REVISED -
PLOT SCALE = 100 0000 / in	DRAWN -	REVISED -
PLOT DATE = 6/18/2019	CHECKED -	REVISED -
	DATE -	REVISED -

STATE OF ILLINOIS  
DEPARTMENT OF TRANSPORTATION

TREE REMOVAL & REPLACEMENT, GUARDRAIL REMOVAL, GUARDPOST,  
PAVEMENT MARKING BLACKOUT TAPE SCHEDULES

SCALE: SHEET OF SHEETS STA. TO STA.

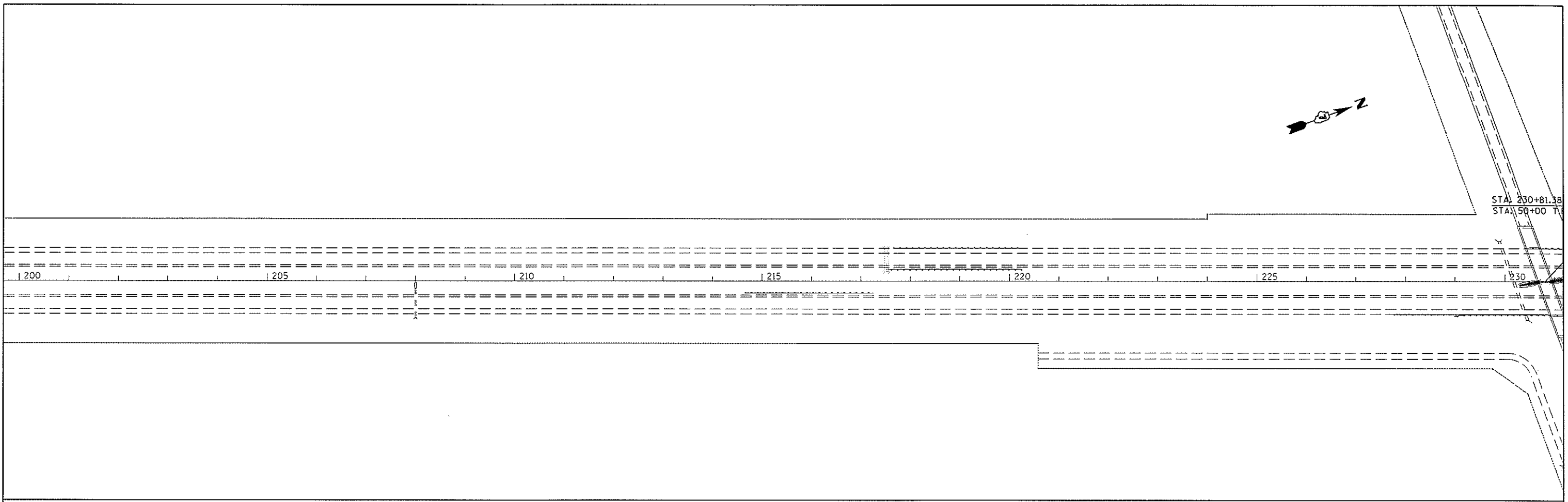
F A I R T E	SECTION	COUNTY	TOTAL SHEETS	SHEET NO.
57	(18-20)RS-2	CUMBERLAND	27	13
CONTRACT NO. 74461				
ILLINOIS FED. AID PROJECT				



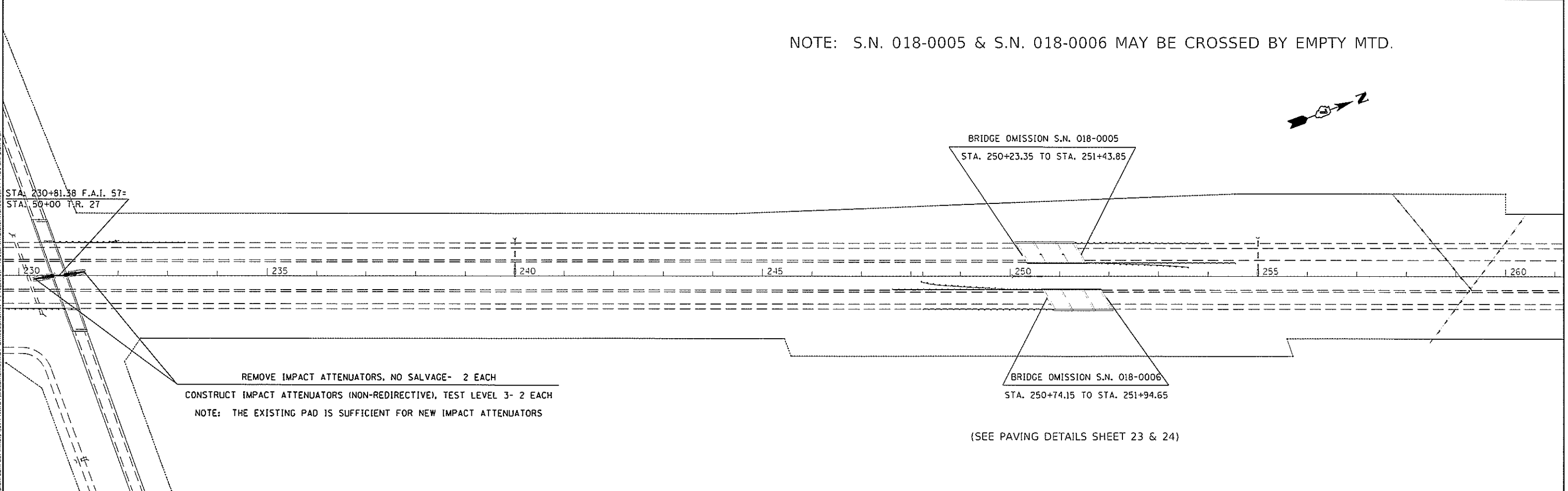








NOTE: S.N. 018-0005 & S.N. 018-0006 MAY BE CROSSED BY EMPTY MTD.



USER NAME = Ollmanmm	DESIGNED -	REVISED -
PLOT SCALE = 200 0002 1 in	DRAWN -	REVISED -
PLOT DATE = 6/20/2019	CHECKED -	REVISED -
	DATE -	REVISED -

**STATE OF ILLINOIS  
DEPARTMENT OF TRANSPORTATION**

<b>PLAN SHEET</b>			
SCALE	SHEET	OF	SHEETS
			STA. 200+00 TO STA. 260+00

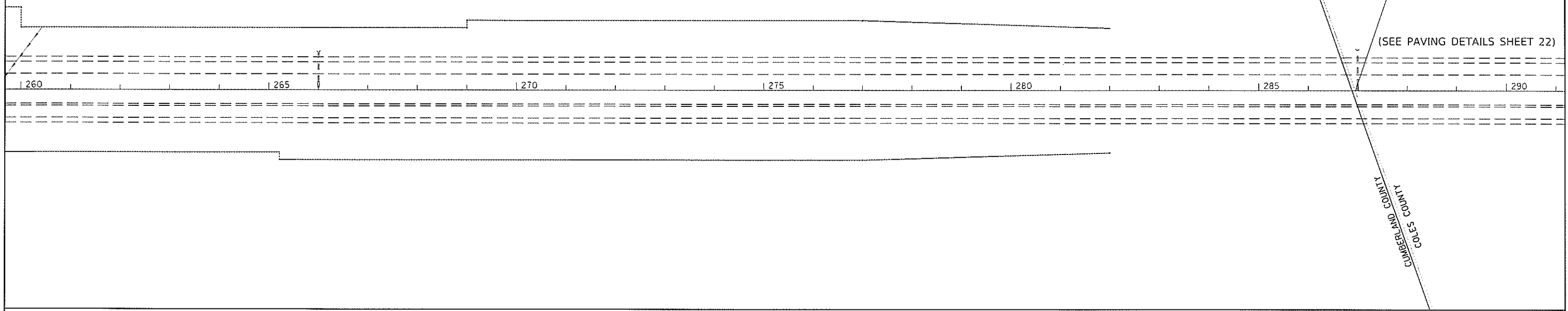
F.A.I. RTE	SECTION	COUNTY	TOTAL SHEETS	SHEET NO.
57	(18-201RS-2)	CUMBERLAND	27	17
CONTRACT NO. 74461				
ILLINOIS FED. AID PROJECT				

MOFFI: D:\civill\...  
 FILE NAME: ...  
 PROJECT: ...  
 OFFICE: ...  
 DRAWN BY: ...  
 CHECKED BY: ...  
 DATE: ...



FAI ROUTE 57 SECTION (18-20)RS-2  
 PROEJCT ENDS STATION 286+88.75  
 CUMBERLAND /COLES COUNTY LINE

(SEE PAVING DETAILS SHEET 22)



MOPRI Default  
 FILE NAME: \\p1\mupri\dot\_illinois\p1\p1\mupri\Documents\DOT\_Offices\District\_7\Projects\74461\CAD\Drawings\1774461\_dtl-plan.dwg

USER NAME = Oltmannm	DESIGNED -	REVISED -
	DRAWN -	REVISED -
PLOT SCALE = 200 0002 / in	CHECKED -	REVISED -
PLOT DATE = 6/20/2019	DATE -	REVISED -

**STATE OF ILLINOIS  
 DEPARTMENT OF TRANSPORTATION**

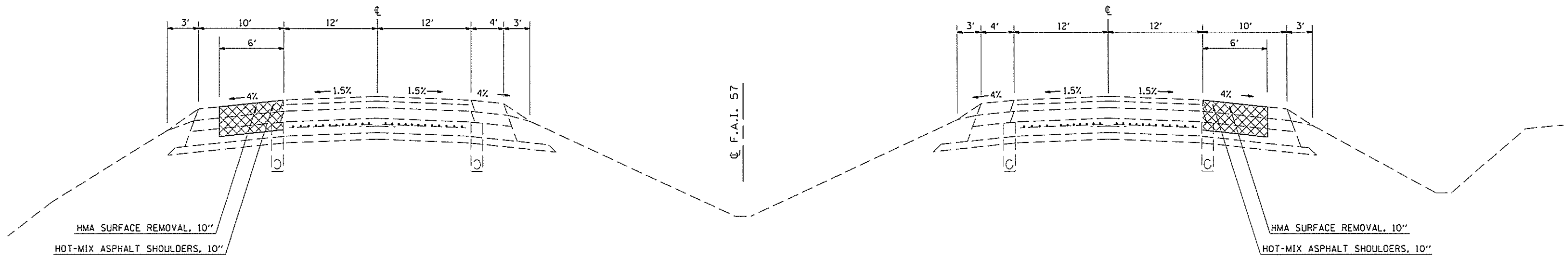
**PLAN SHEET**

SCALE: SHEET OF SHEETS STA 260+00 TO STA. 290+00

FAI RTE	SECTION	COUNTY	TOTAL SHEETS	SHEET NO.
57	118-20RS-2	CUMBERLAND	27	18
CONTRACT NO. 74461			ILLINOIS FED. AID PROJECT	

## PRE-STAGE TYPICAL CROSS SECTION

F.A.I. 57

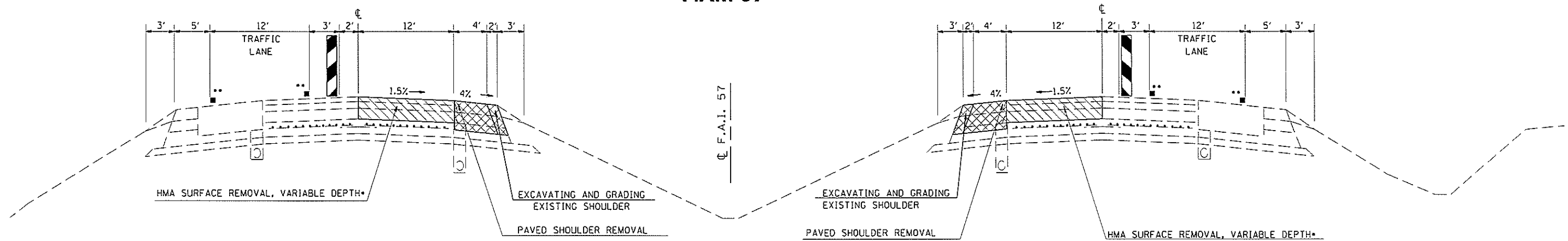


- SUGGESTED SEQUENCE OF OPERATIONS**
1. REMOVE EXISTING SHOULDER
  2. CONSTRUCT 10" HMA SHOULDER 6' WIDE

NOTE: NOT DRAWN TO SCALE

## STAGE 1A TYPICAL CROSS SECTION

F.A.I. 57



- SUGGESTED SEQUENCE OF OPERATIONS**
1. PATCH EXISTING PAVEMENT
  2. REMOVE ALL HMA SURFACING FROM PASSING LANE
  3. REMOVE EXISTING PASSING LANE SHOULDER
  4. EXCAVATE FOR PROPOSED 6' WIDE SHOULDER

NOTE: NOT DRAWN TO SCALE

\* COMPLETE HMA OVERLAY SHALL BE REMOVED TO PCC PAVEMENT.

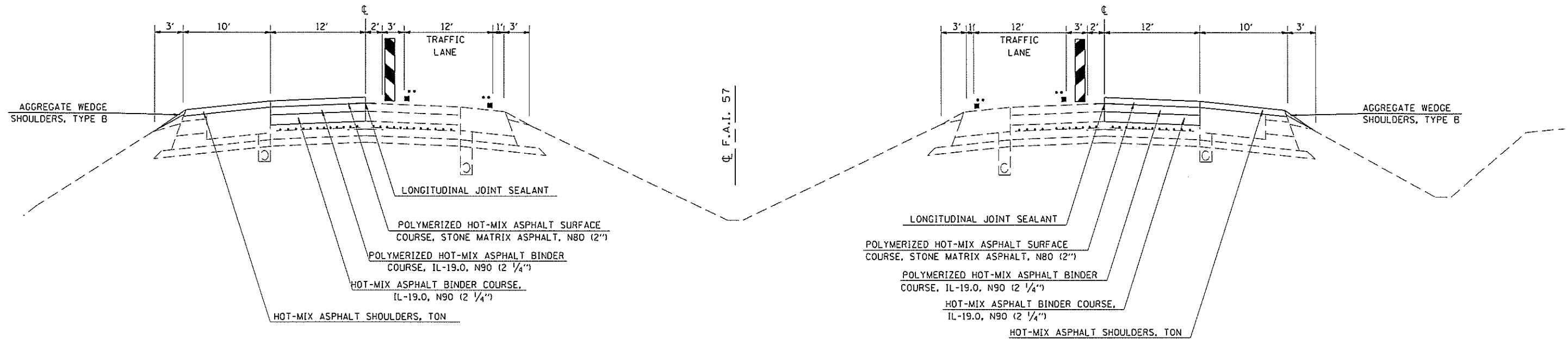
\*\* TEMPORARY PAVEMENT MARKING & REMOVAL SHALL BE INCLUDED IN THE COST OF TRAFFIC CONTROL STANDARD 701401

FILE NAME -	USER NAME - Dltmanmm	DESIGNED -	REVISED -	<b>STATE OF ILLINOIS DEPARTMENT OF TRANSPORTATION</b>	<b>F.A.I. 57 STAGING TYPICAL SECTIONS</b>	F.A.I. RTE.	SECTION	COUNTY	TOTAL SHEETS	SHEET NO.
pw: plonroom.det.illinois.gov\PWIDDT Documents\DOT Offices District 7 Projects\74461\DRAWN\CD\Sheets\0774461-shr1-typical.dgn		DRAWN -	REVISED -			57	(1B-201RS-2)	CUMBERLAND	27	19
Default	PLOT SCALE = 100.0000	CHECKED -	REVISED -		SCALE: N/A	SHEET 1	OF 3 SHEETS	STA.	TO STA.	CONTRACT NO. 74461
	PLOT DATE = 6/19/2019	DATE -	REVISED -							ILLINOIS FED. AID PROJECT



## STAGE 2B TYPICAL CROSS SECTION

F.A.I. 57



\*\* STAGE STRIPING & REMOVAL SHALL BE INCLUDED  
IN THE COST OF TRAFFIC CONTROL STANDARD 701401

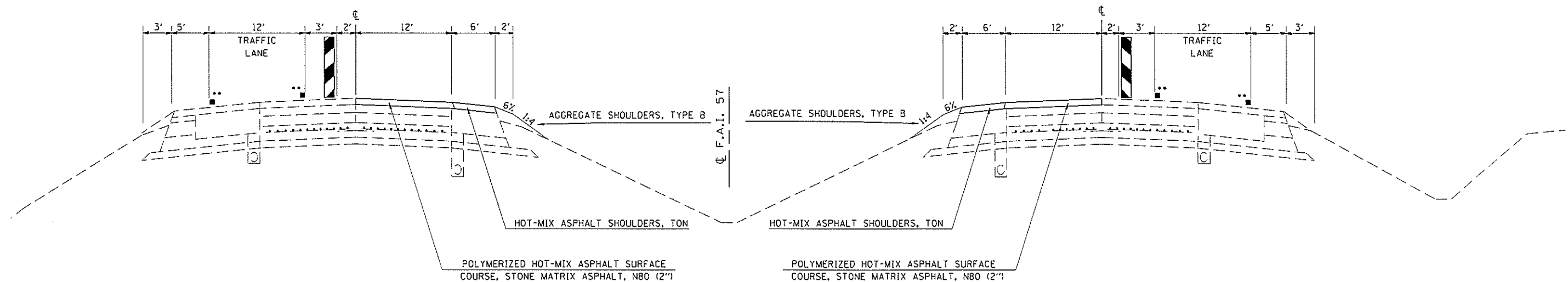
### SUGGESTED SEQUENCE OF OPERATIONS

1. CONSTRUCT TWO LIFTS OF BINDER COURSE AND ONE LIFT OF SURFACE COURSE
2. PAVE DRIVING LANE SHOULDERS

NOTE: NOT DRAWN TO SCALE

## STAGE 3 TYPICAL CROSS SECTION

F.A.I. 57



\*\* TEMPORARY PAVEMENT MARKING & REMOVAL SHALL BE INCLUDED  
IN THE COST OF TRAFFIC CONTROL STANDARD 701401

### SUGGESTED SEQUENCE OF OPERATIONS

1. MOVE TRAFFIC TO DRIVING LANE
2. CONSTRUCT SURFACE COURSE ON PASSING LANE
3. PAVE PASSING LANE SHOULDER

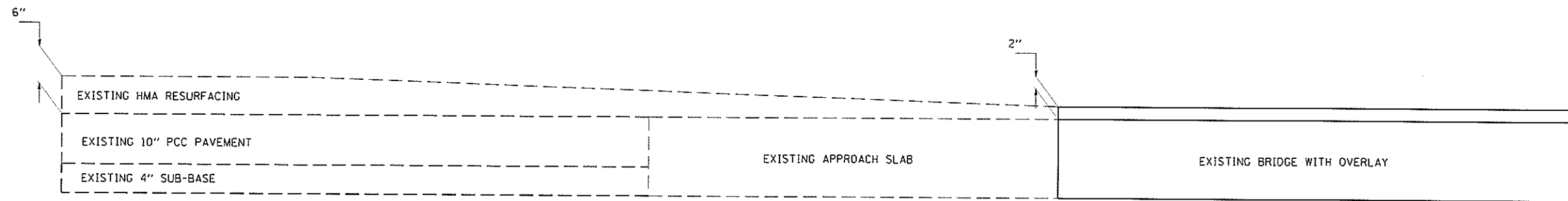
NOTE: NOT DRAWN TO SCALE

FILE NAME :	USER NAME : Dltmann	DESIGNED -	REVISED -	<b>STATE OF ILLINOIS DEPARTMENT OF TRANSPORTATION</b>	<b>F.A.I. 57 STAGING TYPICAL SECTIONS</b>	F.A.I. RTE.	SECTION	COUNTY	TOTAL SHEETS	SHEET NO.
pw: plonraom.dwt.illinois.gov\PIWIDT Documents\IDOT Offices District 7 Projects\4481\CDRANN C-0\Sheets\074481-shr\typical.dwg		CDRANN C-0	REVISED -			57	(18-2018-2)	CUMBERLAND	27	21
PLDT SCALE : 100.0000	PLDT DATE : 8/19/2018	CHECKED -	REVISED -		SCALE: N/A	SHEET 3 OF 3 SHEETS		STA. TO STA.	CONTRACT NO. 74461	
Default		DATE -	REVISED -			ILLINOIS FED. AID PROJECT				



## EXISTING PAVING DETAIL S.N. 018-0005 & S.N. 018-0006 APPROACHES

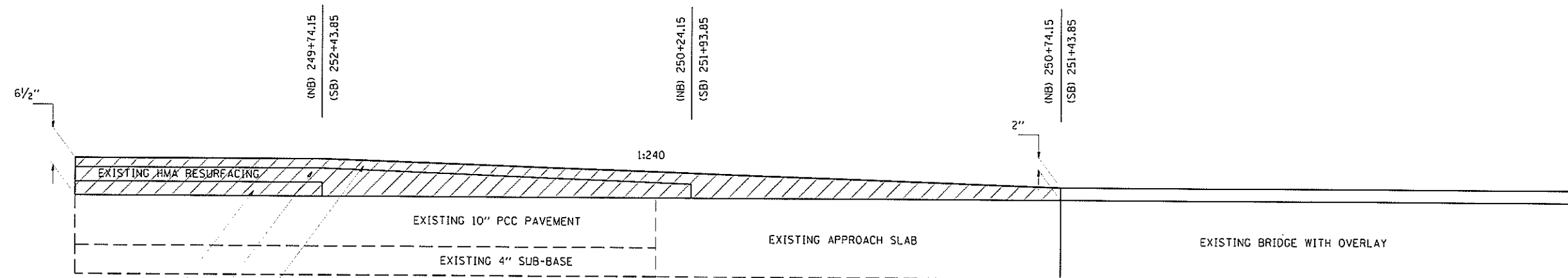
NOTE: NOT DRAWN TO SPECIFIC SCALE



## PROPOSED PAVING DETAIL S.N. 018-0005 & S.N. 018-0006 APPROACHES

NOTE: NOT DRAWN TO SPECIFIC SCALE

HOT-MIX ASPHALT SURFACE REMOVAL, VARIABLE DEPTH



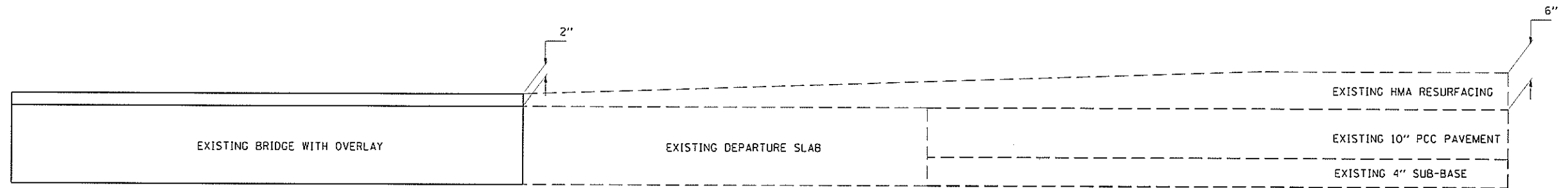
HOT-MIX ASPHALT BINDER COURSE,  
IL-19.0, N90 (2 1/4")

POLYMERIZED HOT-MIX ASPHALT BINDER COURSE,  
IL-19.0, N90 (2 1/4")

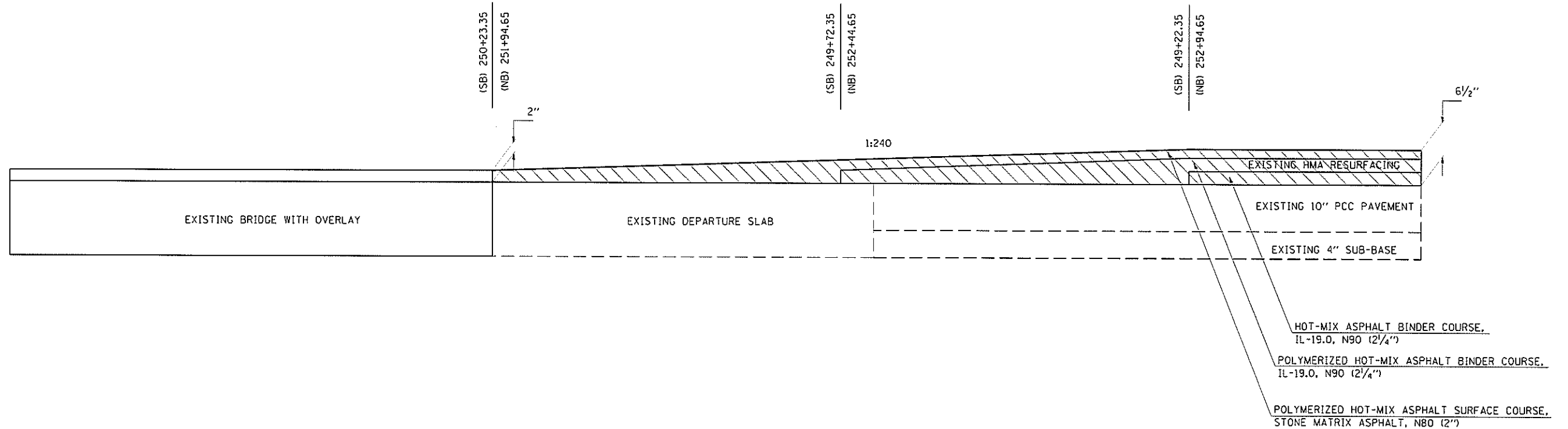
POLYMERIZED HOT-MIX ASPHALT SURFACE COURSE,  
STONE MATRIX ASPHALT, N80 (2")

FILE NAME =	USER NAME = 01tmarcm	DESIGNED -	REVISED -	<b>STATE OF ILLINOIS DEPARTMENT OF TRANSPORTATION</b>	<b>PROPOSED PAVING DETAILS</b>	F.A.I. RTE.	SECTION	COUNTY	TOTAL SHEETS	SHEET NO.
planroom.dot.illinois.gov:PWIG07 Documents\DOT Offices District 7 Projects\74461	DOT\DOT\Projects\74461	DESIGNED -	REVISED -			57	(18-20IRS-2)	CUMBERLAND	27	23
PLOT SCALE = 100.0000 in.	CHECKED -	REVISED -	REVISED -			CONTRACT NO. 74461				
PLOT DATE = 6-18-2019	DATE -	REVISED -	REVISED -		SCALE: NA	SHEET NO. OF SHEETS		STA.	TO STA.	
ILLINOIS FED. AID PROJECT										

**EXISTING PAVING DETAIL**  
**S.N. 018-0005 & S.N. 018-0006 DEPARTURES**



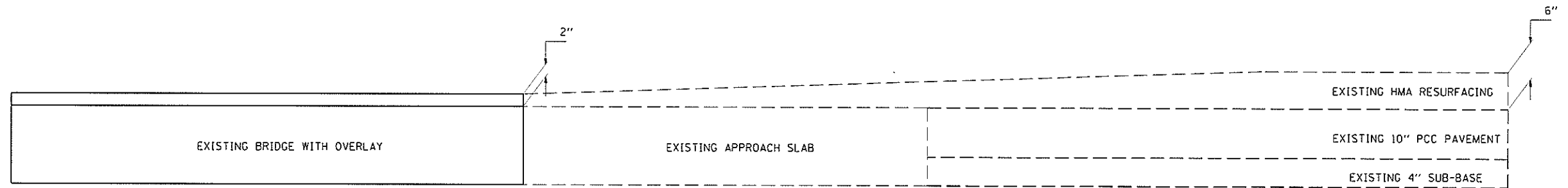
**PROPOSED PAVING DETAIL**  
**S.N. 018-0005 & S.N. 018-0006 DEPARTURES**



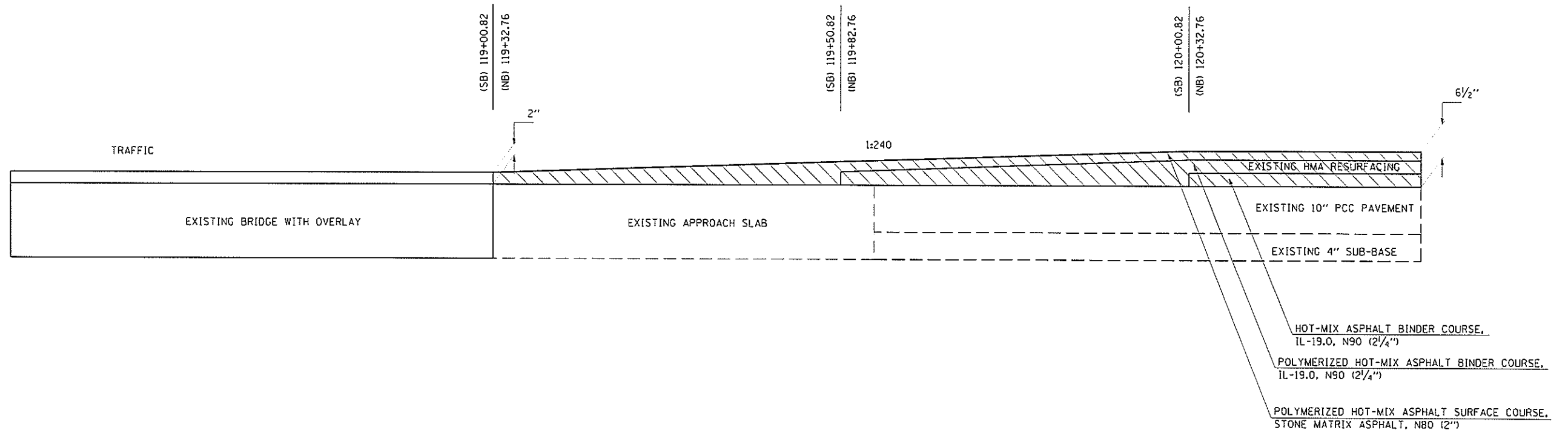
FILE NAME : p:\planroom\dot\illinois.gov\PWIDOT Documents\DOT Offices\District 7\Projects\74461\CDRAWN\CAD\shets 0774461-shd-details.dwg	USER NAME : Dismann DESIGNED - CHECKED - DATE -	REVISED - REVISED - REVISED -	STATE OF ILLINOIS DEPARTMENT OF TRANSPORTATION	PROPOSED PAVING DETAILS			F.A.I. RTE. 57	SECTION (18-20)RS-2	COUNTY CUMBERLAND	TOTAL SHEETS 27	SHEET NO. 24
	PLOT SCALE = 100.0000 in. PLOT DATE = 6-18-2019	DATE -		SCALE: NA	SHEET NO. OF SHEETS STA. TO STA.	CONTRACT NO. 74461 ILLINOIS FED. AID PROJECT					



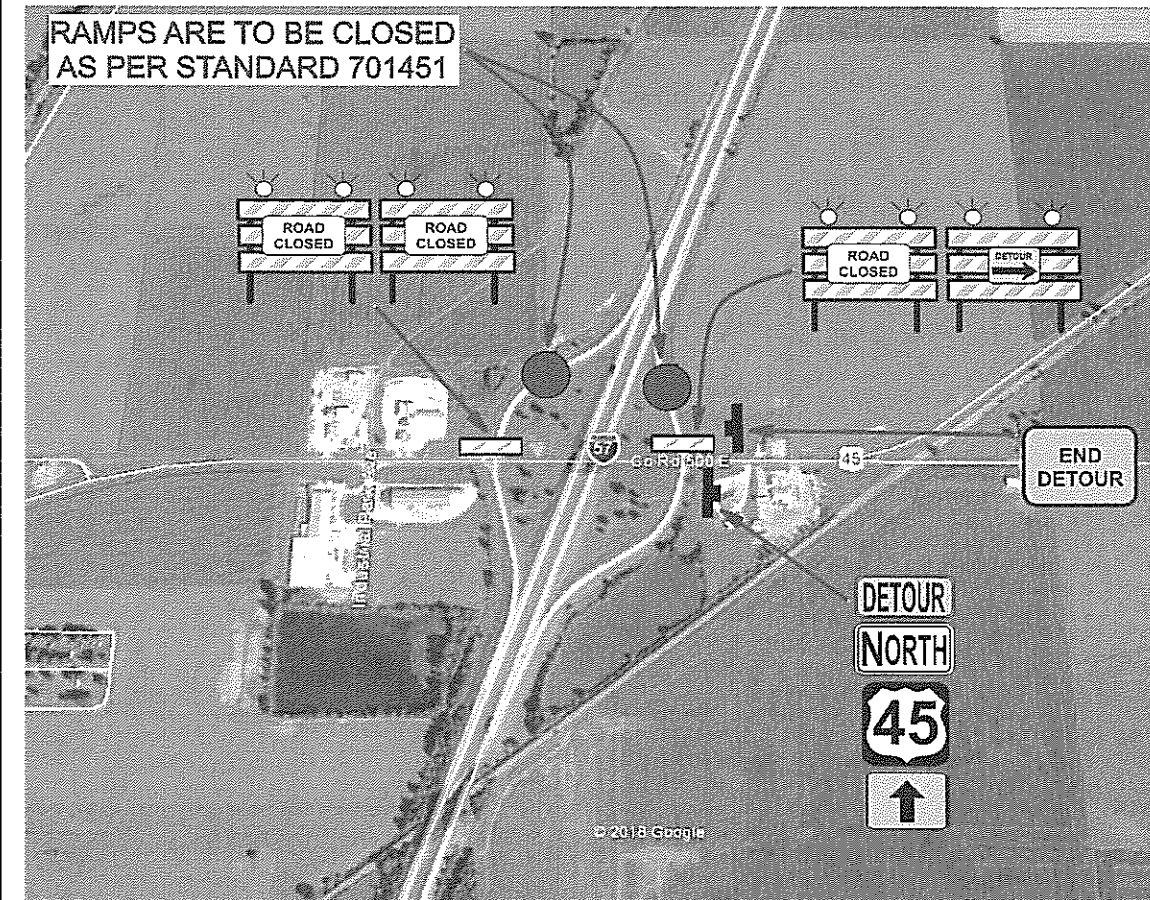
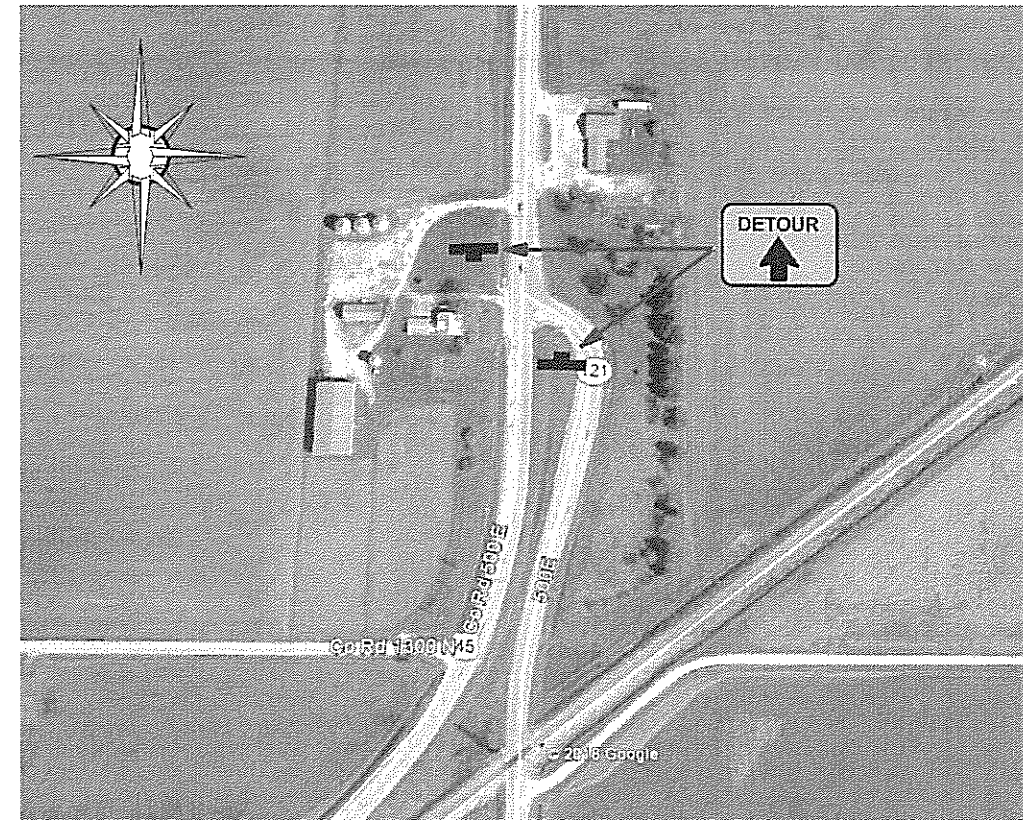
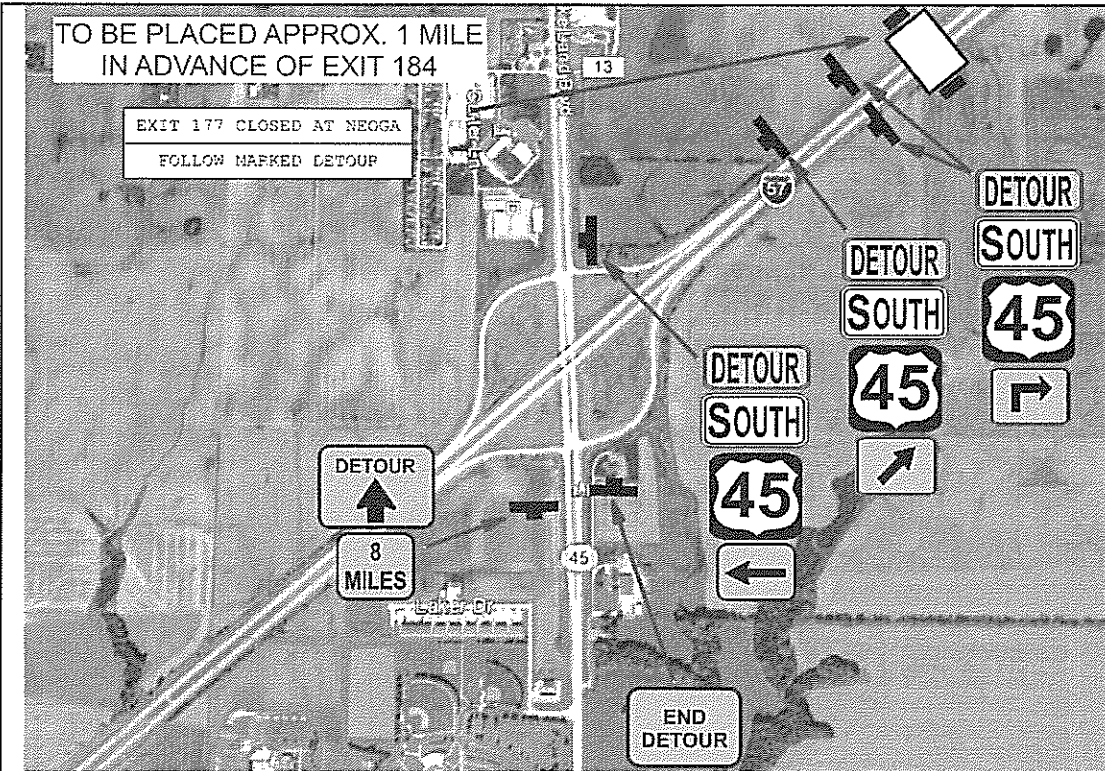
**EXISTING PAVING DETAIL**  
**S.N. 018-0003 & S.N. 018-0004 DEPARTURES**



**PROPOSED PAVING DETAIL**  
**S.N. 018-0003 & S.N. 018-0004**



FILE NAME =	USER NAME = D:\mnam	DESIGNED -	REVISED -	<b>STATE OF ILLINOIS DEPARTMENT OF TRANSPORTATION</b>	<b>PROPOSED PAVING DETAILS</b>				P.A.I. RTE.	SECTION	COUNTY	TOTAL SHEETS	SHEET NO.
PH: \pilenroom\dotc\illinois.go\PWIDOT Docu	ments IDOT Offices District 7 Projects 74461	CDRAWN: CADsheets D74461\shd-details.dgr	REVISED -						57	118-201RS-2	CUMBERLAND	27	25
	PLOT SCALE = 100.0000	CHECKED -	REVISED -		SCALE: NA				SHEET NO. OF SHEETS STA. TO STA.				
	PLOT DATE = 6-18-2019	DATE -	REVISED -						CONTRACT NO. 74461				



**SIGN LEGEND**

M4-8-2412	M4-8a(O)-3024	M4-9(O)-3024	M3-3-3015	M3-1-3015
M6-1L(O)-3018	M5-2R(O)-3018	M4-9(O)-3024	M1-4-36	R11-2-4830
M5-1R(O)-3018	M6-3(O)-3018	W16-3-3024		

NOTE:  
SEE SPECIAL PROVISIONS

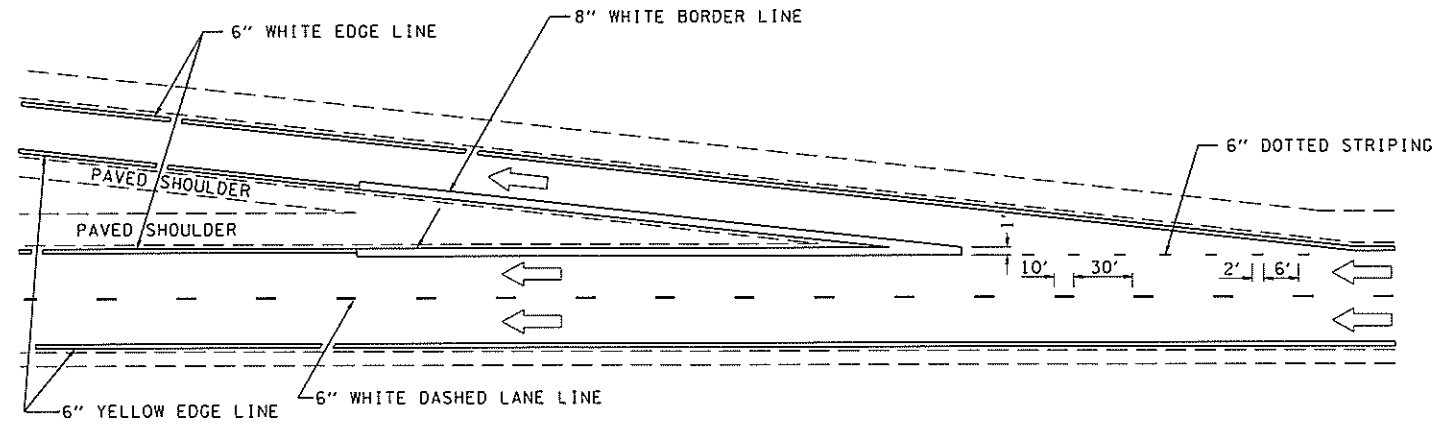
MODEL: D:\chart...  
 FILE NAME: I:\...  
 PROJECT: ...  
 DATE: 6/19/2019

USER NAME = Otm/mm	DESIGNED -	REVISED -
PLOT SCALE = 100 0000 / m	DRAWN -	REVISED -
PLOT DATE = 6/19/2019	CHECKED -	REVISED -
	DATE -	REVISED -

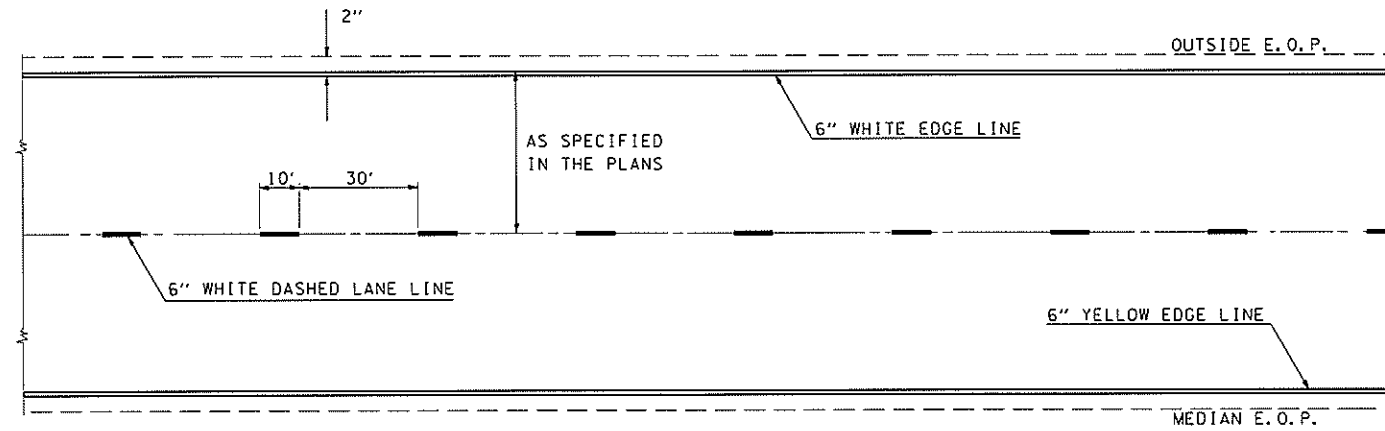
**STATE OF ILLINOIS**  
**DEPARTMENT OF TRANSPORTATION**

<b>RAMP CLOSURE DETOUR</b>				
SCALE	SHEET	OF	SHEETS	STA TO STA

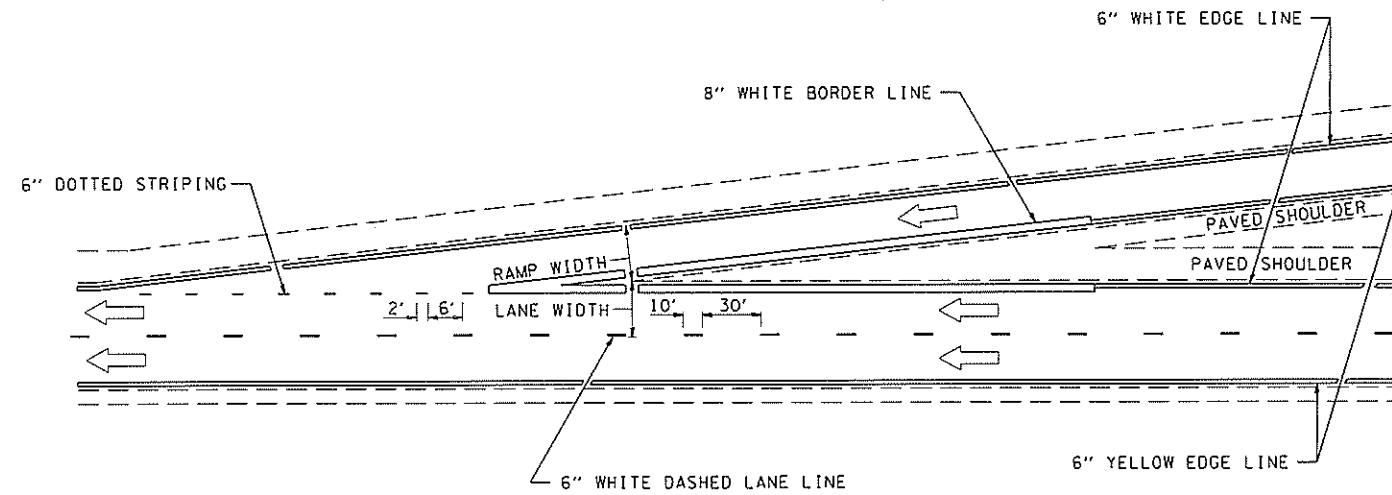
F A J RTE	SECTION	COUNTY	TOTAL SHEETS	SHEET NO.
57	118-201RS-2	CUMBERLAND	27	26
CONTRACT NO. 74461				
ILLINOIS FED. AID PROJECT				



TYPICAL EXIT RAMP MARKING



TYPICAL CENTERLINE & EDGELINE MARKINGS



TYPICAL ENTRANCE RAMP MARKING

NOT TO SCALE

FILE NAME =	USER NAME = D1manm	DESIGNED -	REVISED -
pw:\planroom\dwt\illinois.gov\PIW\DOT Documents\DOT Offices\District 7\Projects\74461	CDRAWN CADSheets\DOT\74461-shr-details.dwg	CHECKED -	REVISED -
Default	PLOT DATE = 8/19/2019	DATE -	REVISED -

STATE OF ILLINOIS  
DEPARTMENT OF TRANSPORTATION

PAVEMENT MARKING DETAILS

SCALE: SHEET OF SHEETS STA. TO STA.

DISTRICT 7 DETAIL NO. 78000002

F.A.I. RTE.	SECTION	COUNTY	TOTAL SHEETS	SHEET NO.
57	(18-201RS-2	CUMBERLAND	27	27
CONTRACT NO. 74461			ILLINOIS FED. AID PROJECT	