

STATE OF ILLINOIS
DEPARTMENT OF TRANSPORTATION

F.A.P. RTE.	SECTION	COUNTY	TOTAL SHEETS	SHEET NO.
10	(410,411)RS-3	JERSEY	8	1
		ILLINOIS	CONTRACT NO. 76L12	

D-98-020-18



FOR INDEX OF SHEETS, SEE SHEET NO. 2

GREENE COUNTY LINE TO MACOUPIN COUNTY LINE

2017 ADT = 2000 (ACTUAL)

2018 ADT = 2000 (ESTIMATED)

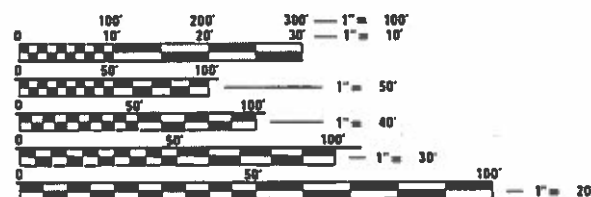
2038 ADT = 2300 (ESTIMATED)

SU = 5.0% MU = 13.8%

PROPOSED HIGHWAY PLANS

FAP ROUTE 10 (IL 267)
SECTION (410,411)RS-3
PROJECT STP-AQCA(875)
RESURFACING – DESIGNED OVERLAY
JERSEY COUNTY

C-98-160-18

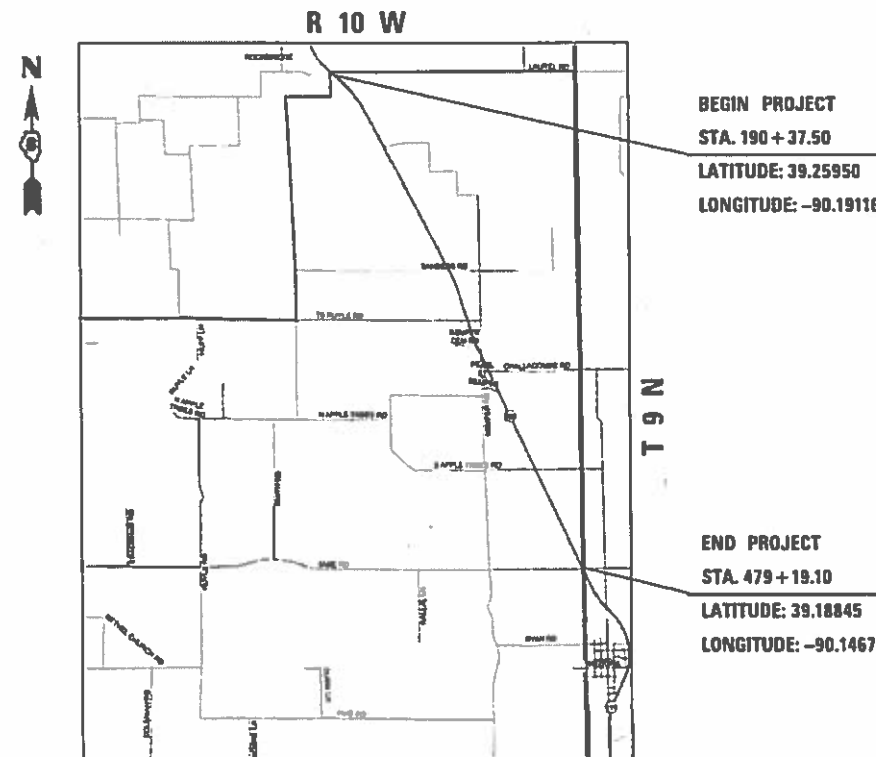


FULL SIZE PLANS HAVE BEEN PREPARED USING STANDARD ENGINEERING SCALES. REDUCED SIZED PLANS WILL NOT CONFORM TO STANDARD SCALES. IN MAKING MEASUREMENTS ON REDUCED PLANS, THE ABOVE SCALES MAY BE USED.

J.U.L.I.E.
JOINT UTILITY LOCATION INFORMATION FOR EXCAVATORS
1-800-892-0123
OR 811

PROJECT ENGINEER HERVE GELIN 618-346-3179
PROJECT MANAGER BILLIE OWEN 618-346-3209

CONTRACT NO. 76L12



NOT TO SCALE

LOCATION MAP

GROSS LENGTH = 28881.60 FT. = 5.470 MILE
NET LENGTH = 28881.60 FT. = 5.470 MILE

STATE OF ILLINOIS
DEPARTMENT OF TRANSPORTATION

SUBMITTED May 31, 2019

Kath Roberts
REGIONAL ENGINEER

June 19, 2019
A. ETS
ENGINEER OF DESIGN AND ENVIRONMENT

June 19, 2019
DIRECTOR OF HIGHWAYS PROJECT IMPLEMENTATION

PRINTED BY THE AUTHORITY
OF THE STATE OF ILLINOIS

INDEX OF SHEETS

- 1 COVER SHEET
- 2 INDEX OF SHEETS, HIGHWAY STANDARDS, GENERAL NOTES & COMMITMENTS
- 3-4 SUMMARY OF QUANTITIES
- 5-6 TYPICAL SECTIONS
- 7 SCHEDULES
- 8 SIDE ROAD AND PRIVATE ENTRANCE DETAILS

HIGHWAY STANDARDS

- 000001-07 STANDARD SYMBOLS, ABBREVIATIONS AND PATTERNS
- 001006 DECIMAL OF AN INCH AND OF A FOOT
- 482011-03 HMA SHOULDER STRIPS/SHOULDERS WITH RESURFACING OR WIDENING AND RESURFACING PROJECTS
- 642006 SHOULDER RUMBLE STRIPS, 8 IN.
- 701201-05 LANE CLOSURE, 2L, 2W, DAY ONLY, FOR SPEEDS \geq 45 MPH
- 701301-04 LANE CLOSURE, 2L, 2W, SHORT TIME OPERATIONS
- 701306-04 LANE CLOSURE, 2L, 2W, SLOW MOVING OPERATIONS DAY ONLY, FOR SPEEDS \geq 45 MPH
- 701311-03 LANE CLOSURE, 2L, 2W, MOVING OPERATIONS - DAY ONLY
- 701326-04 LANE CLOSURE, 2L, 2W, PAVEMENT WIDENING, FOR SPEEDS \geq 45 MPH
- 701336-07 LANE CLOSURE, 2L, 2W, WORK AREAS IN SERIES, FOR SPEEDS \geq 45 MPH
- 701901-08 TRAFFIC CONTROL DEVICES
- 780001-05 TYPICAL PAVEMENT MARKINGS
- 781001-04 TYPICAL APPLICATIONS RAISED REFLECTIVE PAVEMENT MARKERS

GENERAL NOTES

1. ILLINOIS STATE LAW REQUIRES A 48-HOUR NOTICE BE GIVEN TO ALL UTILITIES WITHIN THE PROJECT AREA BEFORE DIGGING. FIELD MARKING OF FACILITIES MAY BE OBTAINED BY CONTACTING J.U.L.I.E. OR FOR NON-MEMBERS, THE UTILITY COMPANY DIRECTLY. AGENCIES KNOWN TO HAVE FACILITIES WITHIN THE PROJECT AREA ARE AS FOLLOWS:

UTILITY	ABOVE GROUND	BELOW GROUND
*FRONTIER COMMUNICATIONS (COMMUNICATIONS)	X	X
*VILLAGE OF MEDORA (WATER & SANITARY SEWER)		X
*M.J.M. ELECTRIC COOPERATIVE, INC. (ELECTRIC)	X	X

MEMBERS OF J.U.L.I.E. CALL TOLL FREE (800) 892-0123 OR 811 AND ARE INDICATED BY *. NON- J.U.L.I.E. MEMBERS MUST BE NOTIFIED INDIVIDUALLY.

2. THE CONTRACTOR AND THE ENGINEER SHALL BE AWARE THAT NO SURVEY WAS PERFORMED FOR THIS PROJECT. THE STATIONING SHOWN IN THE PLAN SHEETS WAS CREATED USING MICROFILM. IT SHALL BE ASSUMED TO BE APPROXIMATE. THE CONTRACTOR SHALL VERIFY DIMENSIONS AND CONDITIONS IN THE FIELD PRIOR TO CONSTRUCTION AND ORDERING OF MATERIALS.
3. THE THICKNESS OF HOT-MIX ASPHALT SURFACE MIXTURES SHOWN ON THE PLANS IS THE NOMINAL THICKNESS. DEVIATIONS MAY OCCUR DUE TO IRREGULARITIES IN THE EXISTING SURFACE OR BASE ON WHICH THE BITUMINOUS MIXTURE IS PLACED.
4. THE CONTRACTOR SHALL PROVIDE POSITIVE AND ADEQUATE DRAINAGE AT ALL TIMES.
5. THE CONTRACTOR MUST MAINTAIN TWO 10' LANES WHILE UNDER TWO LANE, TWO WAY TRAFFIC.
6. THE FOLLOWING MIXTURE REQUIREMENTS ARE APPLICABLE FOR THIS PROJECT:

MIXTURE USE	SURFACE	BINDER	SHOULDERS \geq 2.25"	SHOULDERS < 2.25"	PATCHING
AC/PG	PG 64-22	PG 64-22	PG 64-22	PG 64-22	PG 64-22
RAP % (MAX)	SEE SPECIAL PROVISION	SEE SPECIAL PROVISION	SEE SPECIAL PROVISION	SEE SPECIAL PROVISION	SEE SPECIAL PROVISION
DESIGN AIR VOIDS	4.0% @ Ndes=70	4.0% @ Ndes=70	4.0% @ Ndes=30	4.0% @ Ndes=30	4.0% @ Ndes=70
MIX COMPOSITION (Gradation)	IL 9.5	IL 19.0	IL 19.0L	IL 9.5L	IL 19.0
FRICTION AGG	MIXTURE "C"	MIXTURE "B"			MIXTURE "B"
QUALITY MGMT PROGRAM	QCP	QCP	QC/QA	QC/QA	QC/QA

PLAN QUANTITIES FOR HOT-MIX ASPHALT ITEMS ARE CALCULATED USING A UNIT WEIGHT OF 112 LB/SQ YD/IN.

7. AN EMPTIED MTD WILL BE ALLOWED OVER ALL CULVERTS THROUGHOUT THE LENGTH OF THE PROJECT. THE CULVERTS INCLUDED ARE SN 042-2410, SN 042-2411 AND SN 042-2412.
8. AN ESTIMATED QUANTITY OF 16174 TONS OF CUTTINGS FROM THE HOT-MIX ASPHALT SURFACE REMOVAL OPERATION IS ANTICIPATED.
9. ALL TURF AREAS DISTURBED BY THE CONTRACTOR SHALL BE SEEDED WITH THE APPROPRIATE EROSION CONTROL, AS DIRECTED BY THE ENGINEER, AT THE CONTRACTOR'S EXPENSE.
10. THE ENGINEER SHALL NOTE BEGINNING AND END STATIONS FOR NO PASSING ZONES PRIOR TO MILLING.
11. SHORT TERM PAVEMENT MARKING SHALL BE APPLIED TO MILLED, LEVEL BINDER, AND FINAL SURFACE. ONLY REMOVAL FROM FINAL SURFACE PAID AS SHORT TERM PAVEMENT MARKING REMOVAL.
12. PAVEMENT MARKINGS SHALL MATCH EXISTING MARKINGS AS DIRECTED BY THE ENGINEER.
13. NO OVERNIGHT LANE CLOSURES WILL BE PERMITTED.

14. IF THE PROPOSED SURFACE REMOVAL ON THIS PROJECT PRODUCES A MILLED EDGE NEAR CENTERLINE GREATER THAN 1.5 INCHES OR IF THE PROPOSED RESURFACING RESULTS IN AN ELEVATION DIFFERENCE GREATER THAN 2 INCHES NEAR THE CENTERLINE BETWEEN ADJACENT OPEN LANES OF TRAFFIC, ONE OF THE FOLLOWING SHALL APPLY:

- * THE CONTRACTOR SHALL ORGANIZE THE WORK TO AVOID THE ELEVATION DIFFERENCES MENTIONED ABOVE.
- * THE CONTRACTOR SHALL CONSTRUCT A TEMPORARY HOT MIX ASPHALT WEDGE ALONG THE CENTERLINE TO AVOID THE ELEVATION DIFFERENCES MENTIONED ABOVE.
- * THE CONTRACTOR SHALL CONSTRUCT A MILLED SLOPE EDGE (MINIMUM 1:3) ALONG THE CENTERLINE TO AVOID THE ELEVATION DIFFERENCES MENTIONED ABOVE.

THE COST OF THIS WORK SHALL BE INCLUDED IN THE COST PER SQUARE YARD FOR HOT-MIX ASPHALT SURFACE REMOVAL OF THE DEPTH SPECIFIED OR IN THE COST PER TON FOR THE HOT-MIX ASPHALT RESURFACING MIXES SPECIFIED IN THE PLANS.

COMMITMENTS

NONE

STATE OF ILLINOIS
DEPARTMENT OF TRANSPORTATION

INDEX OF SHEETS, HIGHWAY STANDARDS,
GENERAL NOTES & COMMITMENTS

F.A.P. RTE.	SECTION	COUNTY	TOTAL SHEETS	SHEET NO.
10	(410,411)RS-3	JERSEY	8	2
CONTRACT NO. 76L12				
ILLINOIS FED. AID PROJECT				

SCALE: SHEET 1 OF 1 SHEETS STA. TO STA.

CODE NO.	ITEM	UNIT	TOTAL QUANTITY	CONSTR. CODE
				80% FED 20% STATE ROADWAY 0005 RURAL
20200100	EARTH EXCAVATION	CU YD	2853	2853
40600290	BITUMINOUS MATERIALS (TACK COAT)	POUND	64984	64984
40600990	TEMPORARY RAMP	SQ YD	734	734
40603085	HOT-MIX ASPHALT BINDER COURSE, IL-19.0, N70	TON	9705	9705
40603315	HOT-MIX ASPHALT SURFACE COURSE, MIX "C", N70	TON	6470	6470
44000164	HOT-MIX ASPHALT SURFACE REMOVAL, 3 3/4"	SQ YD	77018	77018
44004250	PAVED SHOULDER REMOVAL	SQ YD	6419	6419
44200184	PAVEMENT PATCHING, TYPE III, 15 INCH	SQ YD	20	20
44200186	PAVEMENT PATCHING, TYPE IV, 15 INCH	SQ YD	84	84
48102100	AGGREGATE WEDGE SHOULDER, TYPE B	TON	809	809
48203029	HOT-MIX ASPHALT SHOULDERS, 8"	SQ YD	19255	19255
64200108	SHOULDER RUMBLE STRIPS, 8 INCH	FOOT	57764	57764
67000400	ENGINEER'S FIELD OFFICE, TYPE A	CAL MO	5	5
67100100	MOBILIZATION	L SUM	1	1

MODEL: Default
 FILE: Model: P:\pub\harcross.dwg
 I:\Illinois\gov\PI\DOT\Documents\DOT - Offices\District 8\Projects\0876L12\CADD\DATA\CAD\Sheets\0876L12-rh-500.dgn

USER NAME = leej	DESIGNED -	REVISED -
PLOT SCALE = 100.0000 ' / in.	DRAWN -	REVISED -
PLOT DATE = 5/31/2019	CHECKED -	REVISED -
	DATE -	REVISED -

**STATE OF ILLINOIS
DEPARTMENT OF TRANSPORTATION**

SUMMARY OF QUANTITIES

SCALE: SHEET 1 OF 2 SHEETS STA. TO STA.

F.A.P. RTE.	SECTION	COUNTY	TOTAL SHEETS	SHEET NO.
10	(410,411)RS-3	JERSEY	8	3
			CONTRACT NO. 76L12	
			ILLINOIS FED. AID PROJECT	

MODEL: Default
 FILE: Model: P:\pub\haronom.dwg
 I:\Illinois\gov\PIWDOT\Documents\DOT_Offices\District 8\Projects\DOT76L12\CADDData\CAD\Sheets\DOT76L12-rht-500.dgn

CODE NO.	ITEM	UNIT	TOTAL QUANTITY	CONSTR. CODE
				80% FED 20% STATE ROADWAY 0005 RURAL
70100450	TRAFFIC CONTROL AND PROTECTION, STANDARD 701201	L SUM	1	1
70100460	TRAFFIC CONTROL AND PROTECTION, STANDARD 701306	L SUM	1	1
70100500	TRAFFIC CONTROL AND PROTECTION, STANDARD 701326	L SUM	1	1
70100600	TRAFFIC CONTROL AND PROTECTION, STANDARD 701336	L SUM	1	1
70103815	TRAFFIC CONTROL SURVEILLANCE	CAL DA	60	60
70300100	SHORT TERM PAVEMENT MARKING	FOOT	7877	7877
70300150	SHORT TERM PAVEMENT MARKING REMOVAL	SQ FT	876	876
70300220	TEMPORARY PAVEMENT MARKING - LINE 4"	FOOT	68330	68330
* 78000200	THERMOPLASTIC PAVEMENT MARKING - LINE 4"	FOOT	68330	68330
* 78100100	RAISED REFLECTIVE PAVEMENT MARKER	EACH	362	362
78300200	RAISED REFLECTIVE PAVEMENT MARKER REMOVAL	EACH	362	362
X7030005	TEMPORARY PAVEMENT MARKING REMOVAL	SQ FT	22777	22777
Z0033700	LONGITUDINAL JOINT SEALANT	FOOT	28882	28882
Ø Z0076600	TRAINEES	HOUR	1500	1500
Z0034105	MATERIAL TRANSFER DEVICE	TON	16175	16175
Ø Z0076604	TRAINEES TRAINING PROGRAM GRADUATE	HOUR	1500	1500

* SPECIALTY ITEM
 Ø 0042

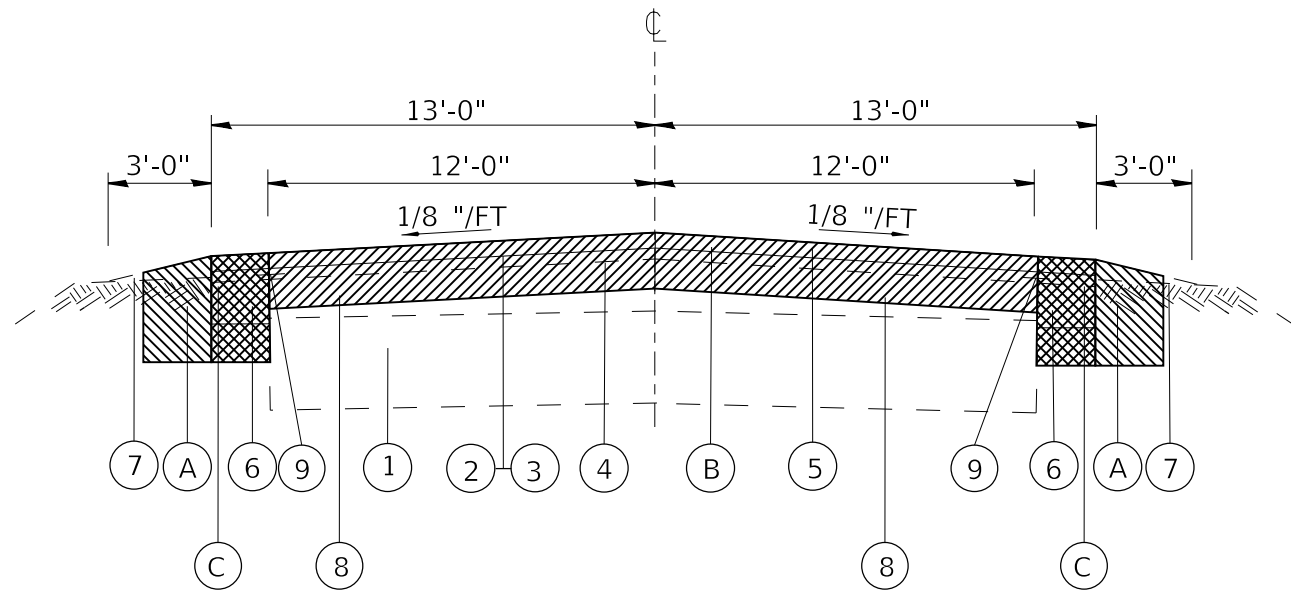
USER NAME = leej	DESIGNED -	REVISED -
PLOT SCALE = 100.0000 ' / in.	DRAWN -	REVISED -
PLOT DATE = 5/31/2019	CHECKED -	REVISED -
	DATE -	REVISED -

**STATE OF ILLINOIS
 DEPARTMENT OF TRANSPORTATION**

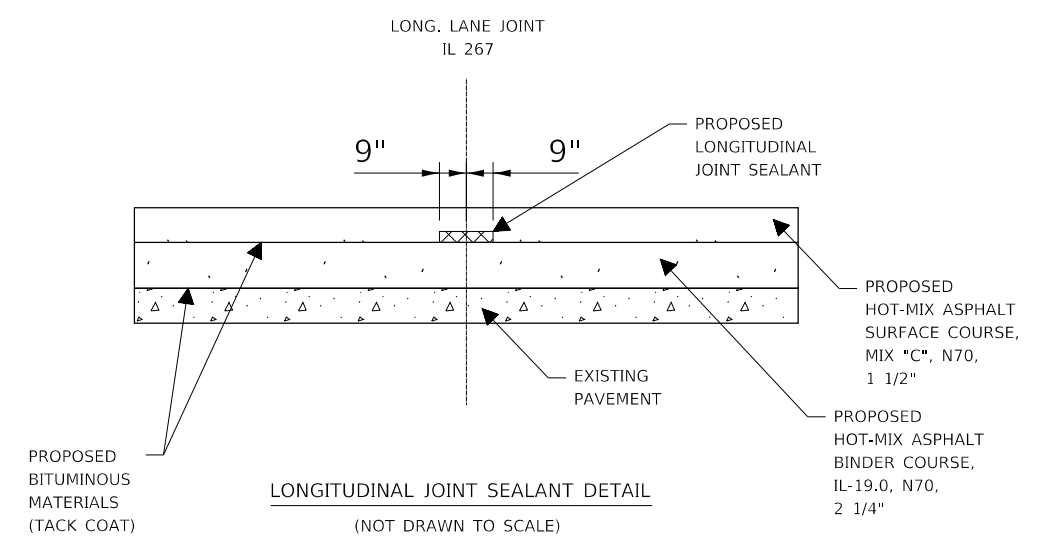
SUMMARY OF QUANTITIES

SCALE: SHEET 2 OF 2 SHEETS STA. TO STA.

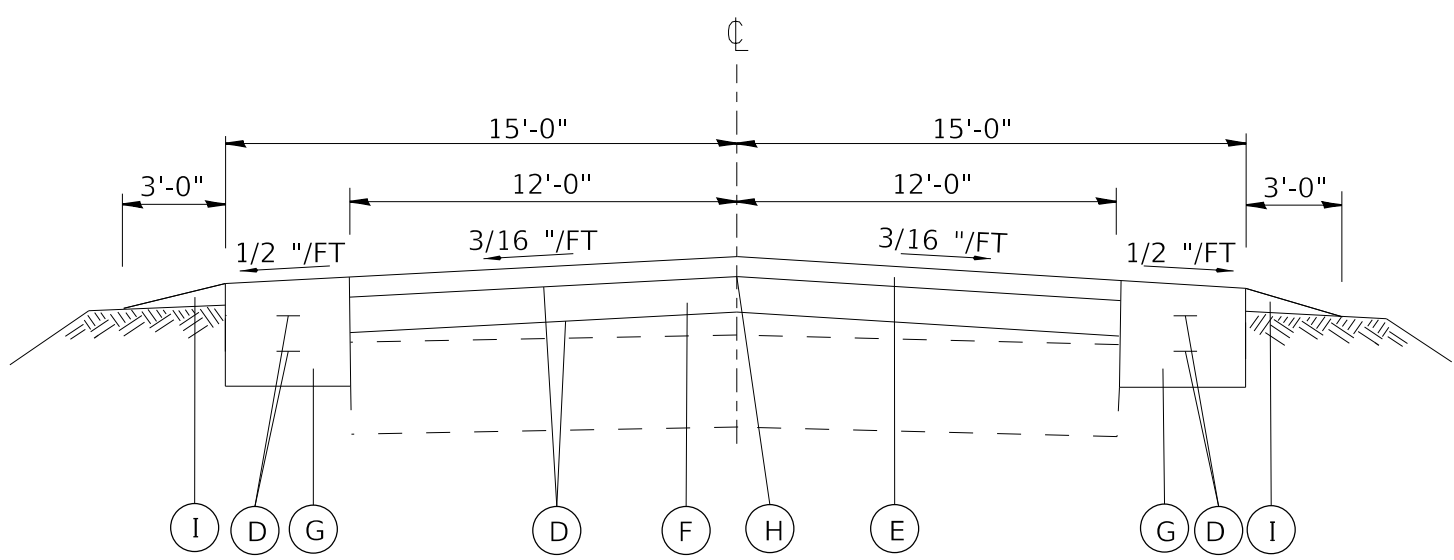
F.A.P. RTE.	SECTION	COUNTY	TOTAL SHEETS	SHEET NO.
10	(410,411)RS-3	JERSEY	8	4
			CONTRACT NO. 76L12	
			ILLINOIS FED. AID PROJECT	



EXISTING TYPICAL SECTION (TANGENT)



LONGITUDINAL JOINT SEALANT DETAIL
(NOT DRAWN TO SCALE)



PROPOSED TYPICAL SECTION (TANGENT)

LEGEND

- ① EXISTING PCC PAVEMENT, 10"
- ② EXISTING BITUMINOUS MATERIAL (PRIME COAT)
- ③ EXISTING AGGREGATE (PRIME COAT)
- ④ EXISTING LEVELING BINDER (MACHINE METHOD) SUPERPAVE N70 3/4"
- ⑤ EXISTING HMA SURFACE COURSE, SUPEERPAVE, MIX "C", N70 1 1/2"
- ⑥ EXISTING BITUMINOUS SHOULDERS
- ⑦ EXISTING AGGREGATE SHOULDERS, TYPE B
- ⑧ EXISTING BITUMINOUS RESURFACING
- ⑨ EXISTING STRIP REFLECTIVE CRACK CONTROL
- (A) PROPOSED EARTH EXCAVATION
- (B) PROPOSED HOT-MIX ASPHALT SURFACE REMOVAL, 3 3/4"
- (C) PROPOSED PAVED SHOULDER REMOVAL
- (D) PROPOSED BITUMINOUS MATERIAL (TACK COAT)
- (E) PROPOSED HOT-MIX ASPHALT SURFACE COURSE, MIX "C", N70, 1 1/2"
- (F) PROPOSED HOT-MIX ASPHALT BINDER COURSE, IL-19.0, N70, 2 1/4"
- (G) PROPOSED HOT-MIX ASPHALT SHOULDERS, 8"
- (H) PROPOSED LONGITUDINAL JOINT SEALANT
- (I) PROPOSED AGGREGATE WEDGE SHOULDER, TYPE B

- HMA SURFACE REMOVAL
- EARTH EXCAVATION
- PAVED SHOULDER REMOVAL

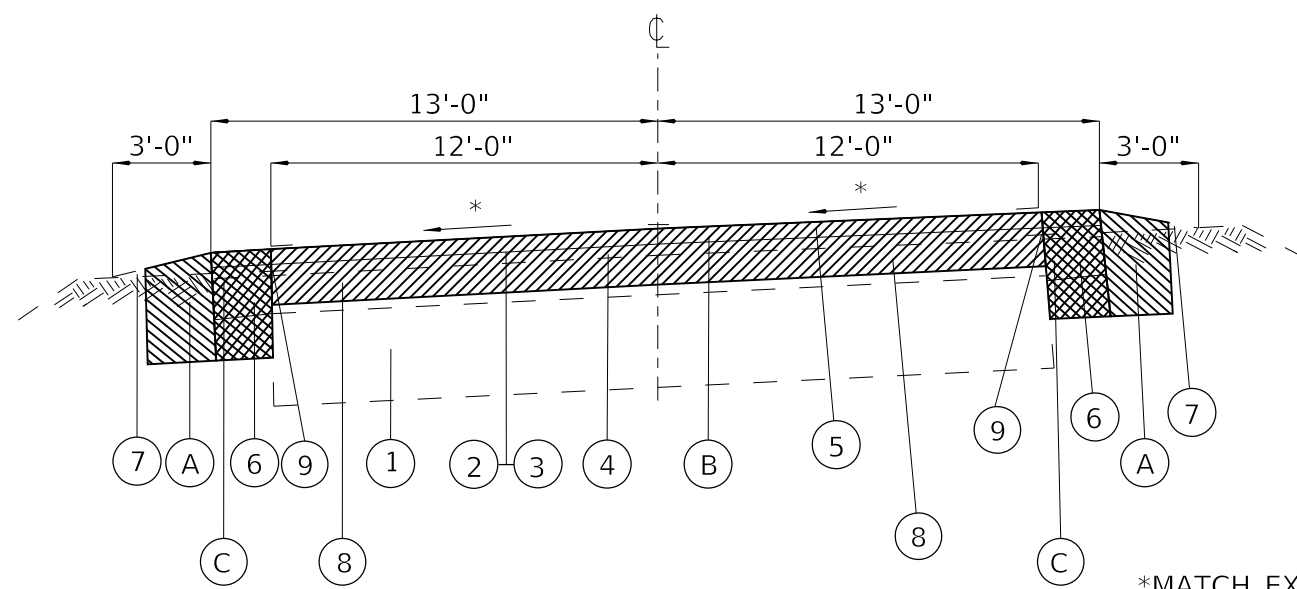
MODEL: Default
 FILE: \\nrcs-pub\pub\baronm.dwg
 PROJECT: \\nrcs-pub\pub\baronm.dwg
 PLOT DATE: 5/30/2019

USER NAME = leej	DESIGNED -	REVISED -
PLOT SCALE = 100.0000' / in.	DRAWN -	REVISOR -
PLOT DATE = 5/30/2019	CHECKED -	REVISOR -
	DATE -	REVISOR -

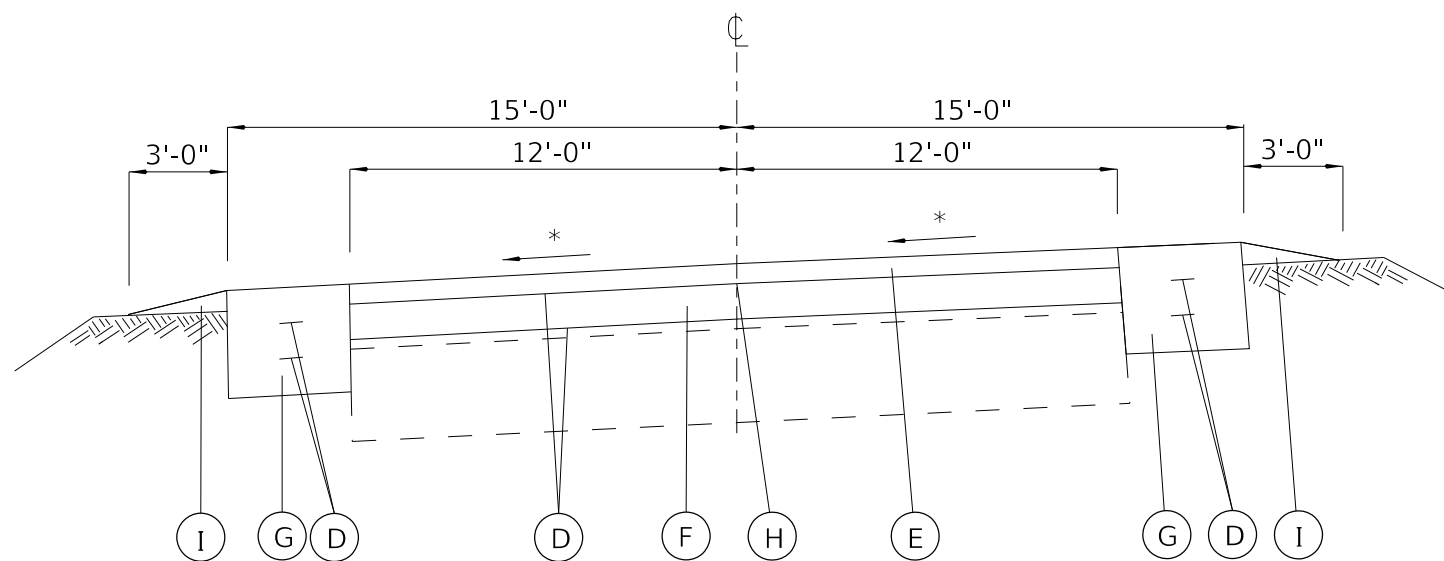
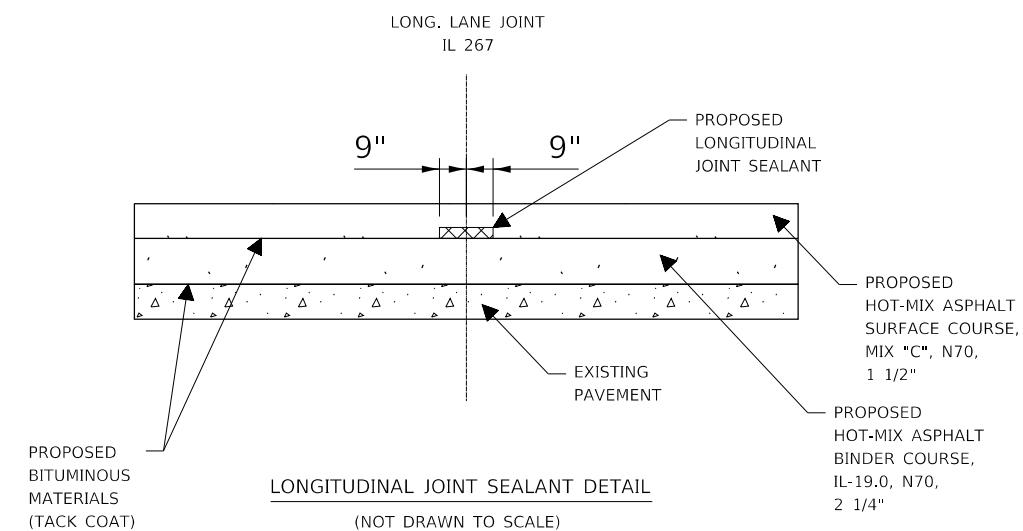
STATE OF ILLINOIS
DEPARTMENT OF TRANSPORTATION

TYPICAL SECTIONS	
SCALE:	SHEET 1 OF 2 SHEETS STA. TO STA.

F.A.P. RTE.	SECTION	COUNTY	TOTAL SHEETS	SHEET NO.
10	(410,411)RS-3	JERSEY	8	5
CONTRACT NO. 76L12				
ILLINOIS FED. AID PROJECT				



EXISTING TYPICAL SECTION (SUPERELEVATED)



PROPOSED TYPICAL SECTION (SUPERELEVATED)

LEGEND

- ① EXISTING PCC PAVEMENT, 10"
- ② EXISTING BITUMINOUS MATERIAL (PRIME COAT)
- ③ EXISTING AGGREGATE (PRIME COAT)
- ④ EXISTING LEVELING BINDER (MACHINE METHOD) SUPERPAVE N70 3/4"
- ⑤ EXISTING HMA SURFACE COURSE, SUPEERPAVE, MIX "C", N70 1 1/2"
- ⑥ EXISTING BITUMINOUS SHOULDERS
- ⑦ EXISTING AGGREGATE SHOULDERS, TYPE B
- ⑧ EXISTING BITUMINOUS RESURFACING
- ⑨ EXISTING STRIP REFLECTIVE CRACK CONTROL

- Ⓐ PROPOSED EARTH EXCAVATION
- Ⓑ PROPOSED HOT-MIX ASPHALT SURFACE REMOVAL, 3 3/4"
- Ⓒ PROPOSED PAVED SHOULDER REMOVAL
- Ⓓ PROPOSED BITUMINOUS MATERIAL (TACK COAT)
- Ⓔ PROPOSED HOT-MIX ASPHALT SURFACE COURSE, MIX "C", N70, 1 1/2"
- Ⓕ PROPOSED HOT-MIX ASPHALT BINDER COURSE, IL-19.0, N70, 2 1/4"
- Ⓖ PROPOSED HOT-MIX ASPHALT SHOULDERS, 8"
- Ⓗ PROPOSED LONGITUDINAL JOINT SEALANT
- Ⓘ PROPOSED AGGREGATE WEDGE SHOULDER, TYPE B

- HMA SURFACE REMOVAL
- EARTH EXCAVATION
- PAVED SHOULDER REMOVAL

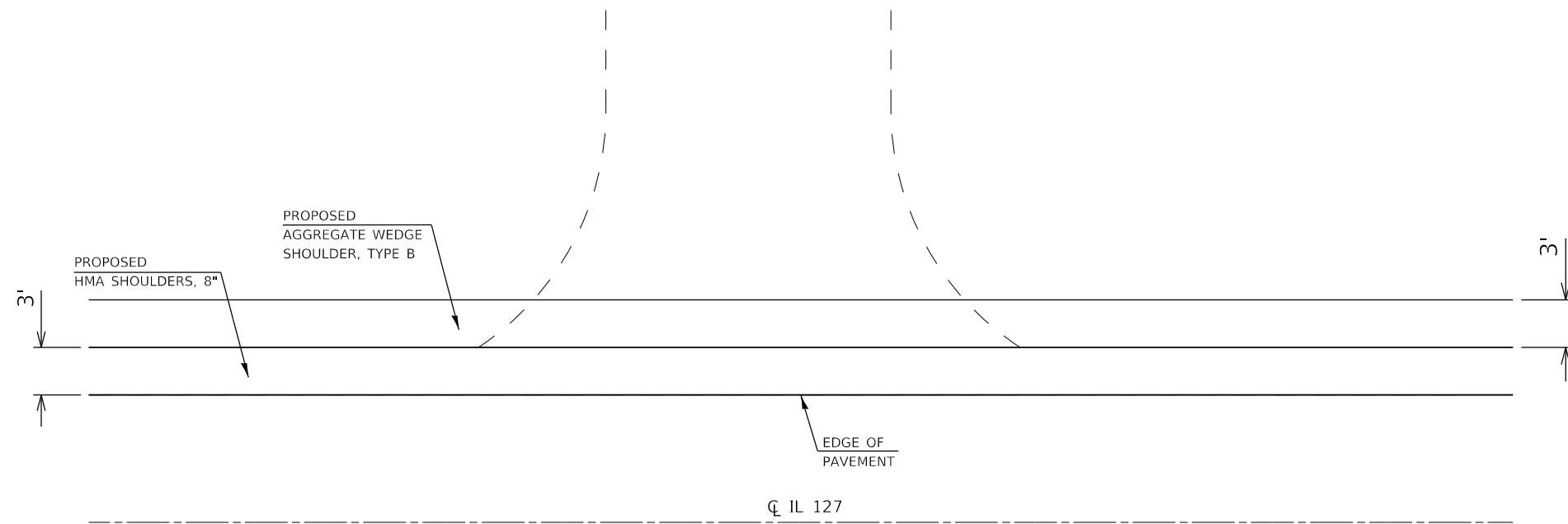
MODEL: Default
 FILE: \\nrcs-pub\pubroom\dat\illinois.gov\PI\DOT\Documents\DOT_Offices\Director_B\Projects\087612\CADD\Drawings\087612-rht-typical.dgn

USER NAME = leej	DESIGNED -	REVISED -
	DRAWN -	REVISED -
PLOT SCALE = 100.0000' / in.	CHECKED -	REVISED -
PLOT DATE = 5/30/2019	DATE -	REVISED -

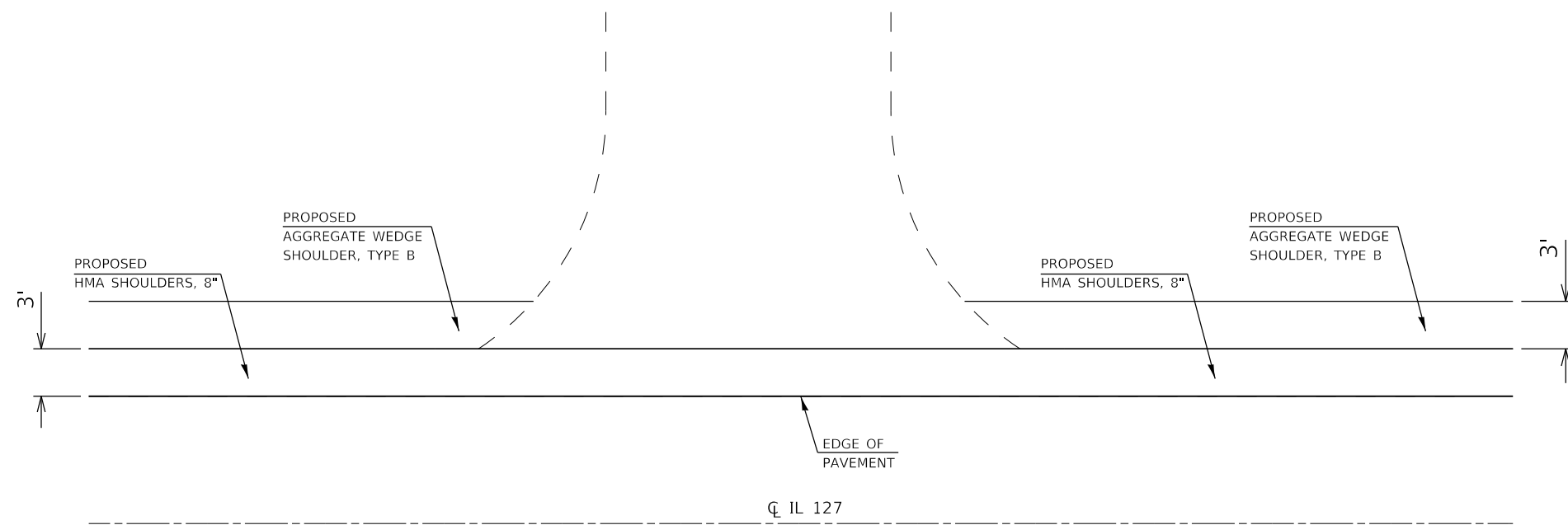
STATE OF ILLINOIS
DEPARTMENT OF TRANSPORTATION

TYPICAL SECTIONS	
SCALE:	SHEET 2 OF 2 SHEETS STA. TO STA.

F.A.P. RTE.	SECTION	COUNTY	TOTAL SHEETS	SHEET NO.
10	(410,411)RS-3	JERSEY	8	6
CONTRACT NO. 76L12				
ILLINOIS FED. AID PROJECT				



TYPICAL AGG. PRIVATE ENTRANCE
DETAIL



TYPICAL HMA PRIVATE ENTRANCE OR SIDE ROAD
DETAIL

MODEL: Default
 FILE: Model_C:\pub\hmanom.dwg
 PROJECT: 0876L12\Cadd\Drawings\DOT_Offices\Drawings\0876L12-rt-detail.dwg

USER NAME = leej	DESIGNED -	REVISED -
	DRAWN -	REVISED -
PLOT SCALE = 100,0000' / in.	CHECKED -	REVISED -
PLOT DATE = 5/30/2019	DATE -	REVISED -

STATE OF ILLINOIS
DEPARTMENT OF TRANSPORTATION

SIDE ROAD AND PRIVATE ENTRANCE DETAILS

SCALE: SHEET 1 OF 1 SHEETS STA. TO STA.

F.A.P. RTE.	SECTION	COUNTY	TOTAL SHEETS	SHEET NO.
10	(410,411)RS-3	JERSEY	8	8
CONTRACT NO. 76L12				
ILLINOIS FED. AID PROJECT				