

STATE OF ILLINOIS
DEPARTMENT OF TRANSPORTATION

F.A.P. NO.	SECTION	COUNTY	TOTAL SHEETS	SHEET NO.
42	(107,108)RS-3, (36-2)-1RS-3	BOND	13	1

INDEX OF SHEETS

- 1 COVER SHEET
- 2 HIGHWAY STANDARDS, GENERAL NOTES AND COMMITMENTS
- 3-4 SUMMARY OF QUANTITIES
- 5-6 TYPICAL SECTIONS
- 7-10 SCHEDULE OF QUANTITIES
- 11 SURVEY TIES
- 12 LOCATION MAP
- 13 RESURFACING DETAILS

TRAFFIC DATA

FUNCTIONAL CLASSIFICATION: MINOR ARTERIAL

IL 140 TO SHADY GROVE AVE.

2017 ADT (ACTUAL): 2700

SU: 6.3%

MU: 4.8%

SHADY GROVE AVE. TO MONTGOMERY CO. LINE

2017 ADT (ACTUAL): 2300

SU: 8.5%

MU: 7.4%

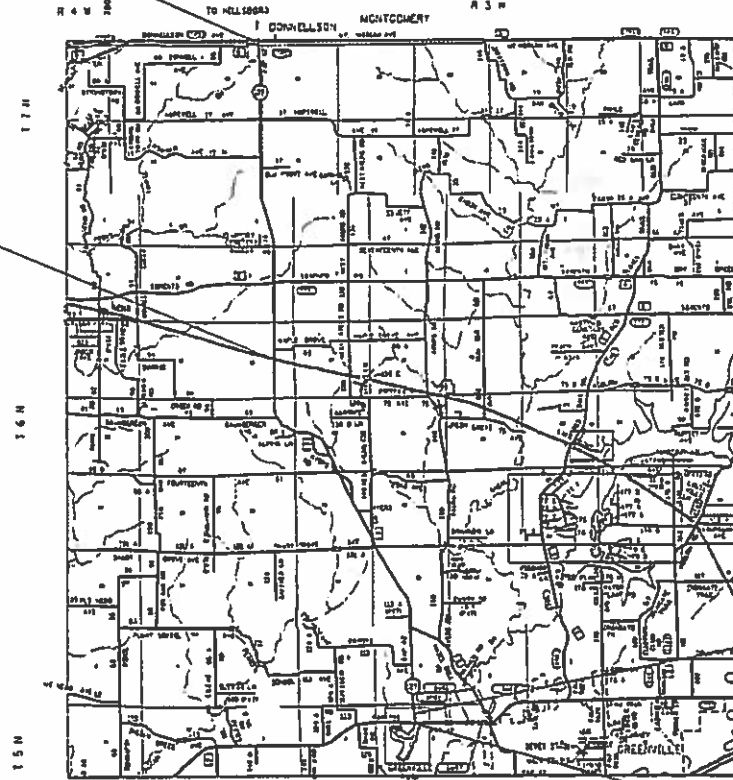
**PROPOSED
HIGHWAY PLANS**

FAP ROUTE 42 (IL 127)
SECTION (107,108)RS-3, (36-2)-1RS-3
PROJECT STP-VB7H(580)
RESURFACING - DESIGNED OVERLAY FROM 0.1 MI
N OF IL 140 JCT TO THE MONTGOMERY COUNTY LINE
BOND COUNTY

C-98-161-18

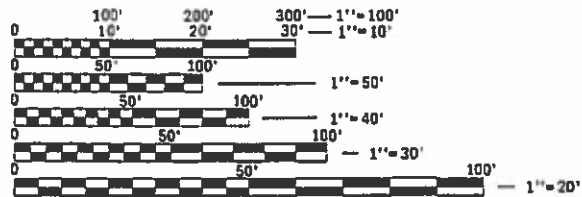
END IMPROVEMENT
MILE STA. 9.663
LAT: 39.027583°N
LONG: 89.473358°W
(MONTGOMERY COUNTY LINE)

RAILROAD OMISSION
MILE STA. 5.477 TO
MILE STA. 5.479



BEGIN IMPROVEMENT
MILE STA. 0.057
38.898519°N
89.436825°W

MILE STA. 0.000



FULL SIZE PLANS HAVE BEEN PREPARED USING STANDARD ENGINEERING SCALES. REDUCED SIZED PLANS WILL NOT CONFORM TO STANDARD SCALES. IN MAKING MEASUREMENTS ON REDUCED PLANS, THE ABOVE SCALES MAY BE USED.

J.U.L.I.E.
JOINT UTILITY LOCATION INFORMATION FOR EXCAVATION
1-800-892-0123
OR 811

PROJECT ENGINEER: TIM PADGETT (618)346-3325
PROJECT MANAGER: DREW RUHOLL (618)346-3454

CONTRACT NO. 76L13

GROSS LENGTH = 50719.68 FT. = 9.506 MILE
NET LENGTH = 50709.12 FT. = 9.604 MILE

D-98-021-18



LOCATION OF SECTION INDICATED THUS: -

STATE OF ILLINOIS
DEPARTMENT OF TRANSPORTATION

SUBMITTED May 30, 2019
Kalith Roberts
REGIONAL ENGINEER

June 14, 2019
[Signature]
ENGINEER OF DESIGN AND ENVIRONMENT

June 14, 2019
[Signature]
DIRECTOR OF HIGHWAYS PROJECT IMPLEMENTATION

PRINTED BY THE AUTHORITY
OF THE STATE OF ILLINOIS

HIGHWAY STANDARDS

000001-07	STANDARD SYMBOLS, ABBREVIATIONS AND PATTERNS
001006	DECIMAL OF AN INCH AND OF A FOOT
420001-09	PAVEMENT JOINTS
442201-03	CLASS C AND D PATCHES
642006	SHOULDER RUMBLE STRIPS, 8 INCH
701006-05	OFF-RD OPERATIONS, 2L2W, 15' TO 24" FROM PAVEMENT EDGE
701011-04	OFF-RD MOVING OPERATIONS, 2L, 2W, DAY ONLY
701201-05	LANE CLOSURE, 2L, 2W, DAY ONLY, FOR SPEEDS ≥ 45 MPH
701301-04	LANE CLOSURE, 2L, 2W, SHORT TIME OPERATIONS
701306-04	LANE CLOSURE, 2L, 2W, SLOW MOVING OPERATIONS DAY ONLY, FOR SPEEDS ≥ 45 MPH
701311-03	LANE CLOSURE, 2L, 2W, MOVING OPERATIONS - DAY ONLY
701326-04	LANE CLOSURE, 2L, 2W, PAVEMENT WIDENING, FOR SPEEDS ≥ MPH
701336-07	LANE CLOSURE, 2L, 2W, WORK AREAS IN SERIES, FOR SPEEDS ≥ 45 MPH
701901-08	TRAFFIC CONTROL DEVICES
780001-05	TYPICAL PAVEMENT MARKINGS
781001-04	TYPICAL APPLICATIONS RAISED REFLECTIVE PAVEMENT MARKERS

GENERAL NOTES:

- ① ILLINOIS STATE LAW REQUIRES A 48-HOUR NOTICE TO BE GIVEN TO ALL UTILITIES WITHIN THE PROJECT AREA BEFORE DIGGING. FIELD MARKING OF FACILITIES MAY BE OBTAINED BY CONTACTING J.U.L.I.E. OR FOR NON-MEMBERS, THE UTILITY COMPANY DIRECTLY. AGENCIES KNOWN TO HAVE FACILITIES WITHIN THE PROJECT AREA ARE AS FOLLOWS:

	AERIAL	BURIED
*AMEREN ILLINOIS (GAS & ELECTRIC)	x	x
*AT&T ILLINOIS (COMMUNICATIONS)	x	x
*BOND MADISON WATER COMPANY (WATER)	x	
*BUCKEYE PANTHERS L.P.--WOOD RIVER PIPELINE (PIPELINE)		x
*VILLAGE OF DONNELSON (WATER & SANITARY SEWER)		x
*FRONTIER COMMUNICATIONS (COMMUNICATIONS)	x	x
*NEWWAVE COMMUNICATIONS (CABLE TV)	x	x
*SOUTHWESTERN ELECTRIC COOPERATIVE INC. (ELECTRIC)	x	x

MEMBERS OF J.U.L.I.E. CALL TOLL FREE (800) 892-0123 OR 811 AND ARE INDICATED BY *. NON-J.U.L.I.E. MEMBERS MUST BE NOTIFIED INDIVIDUALLY.

- ② THE CONTRACTOR AND THE ENGINEER SHALL BE AWARE THAT NO SURVEY WAS PERFORMED FOR THIS PROJECT. THE STATIONING, TOPOGRAPHY, AND QUANTITIES SHOWN IN THE PLANS WERE CREATED USING MICROFILM AND FIELD MEASUREMENTS. ALL SHALL BE ASSUMED TO BE APPROXIMATE. THE CONTRACTOR SHALL VERIFY DIMENSIONS AND CONDITIONS IN THE FIELD PRIOR TO CONSTRUCTION AND ORDERING OF MATERIALS.
- ③ THE THICKNESS OF HOT-MIX ASPHALT SURFACE MIXTURES SHOWN ON THE PLANS IS THE NOMINAL THICKNESS. DEVIATIONS MAY OCCUR DUE TO IRREGULARITIES IN THE EXISTING SURFACE OR BASE ON WHICH THE BITUMINOUS MIXTURE IS PLACED.
- ④ AN ESTIMATED QUANTITY OF 28,600 TONS OF CUTTINGS FROM HMA REMOVAL IS ANTICIPATED.
- ⑤ THE PROPOSED PAVEMENT MARKINGS SHALL MATCH THE LOCATIONS OF THE EXISTING PAVEMENT MARKINGS, AS DIRECTED BY THE ENGINEER.
- ⑥ THE MATERIAL TRANSFER DEVICE CAN CROSS IN AN UNLOADED CONDITION ON SN 003-2421, SN 003-2422, SN 003-2424 & SN 003-2425. THE MATERIAL TRANSFER DEVICE CANNOT CROSS SN 003-2423. SEE THE LOCATION MAP FOR THE STRUCTURES LOCATION.
- ⑦ PAVED SHOULDER REMOVAL AND PAVEMENT PATCHING MAY OCCUR ABOVE EXISTING CULVERTS. THE DEPTH OF PAVEMENT PATCHING AND SHOULDER REMOVAL SHALL BE TO THE DEPTH SPECIFIED IN THE PLANS OR TO THE TOP OF THE EXISTING CULVERTS, WHICHEVER IS LESS.
- ⑧ IF THE PROPOSED SURFACE REMOVAL ON THIS PROJECT PRODUCES A MILLED EDGE ANYWHERE GREATER THAN 1.5 INCHES OR IF THE PROPOSED RESURFACING RESULTS IN AN ELEVATION DIFFERENCE GREATER THAN 2 INCHES NEAR THE CENTERLINE BETWEEN ADJACENT OPEN LANES OF TRAFFIC, ONE OF THE FOLLOWING SHALL APPLY:

- * THE CONTRACTOR SHALL ORGANIZE THE WORK TO AVOID THE ELEVATION DIFFERENCES MENTIONED ABOVE.
- * THE CONTRACTOR SHALL CONSTRUCT A TEMPORARY HOT-MIX ASPHALT WEDGE TO AVOID THE ELEVATION DIFFERENCES MENTIONED ABOVE.
- * THE CONTRACTOR SHALL CONSTRUCT A MILLED SLOPE EDGE (MINIMUM 1:3) TO AVOID THE ELEVATION DIFFERENCES MENTIONED ABOVE.

THE COST OF THIS WORK SHALL BE INCLUDED IN THE COST PER SQUARE YARD FOR HOT-MIX ASPHALT SURFACE REMOVAL OF THE DEPTH SPECIFIED OR IN THE COST PER TON FOR THE HOT-MIX ASPHALT RESURFACING MIXES SPECIFIED IN THE PLANS.

GENERAL NOTES CONTINUED:

- ⑨ REVISE STANDARD SPECIFICATIONS ARTICLE 107.12, PARAGRAPH 5, LAST SENTENCE TO READ: "ALL OTHER RAILROAD FLAGGER COSTS WILL BE INCURRED BY THE DEPARTMENT ACCORDING TO ARTICLE 109.05."
- ⑩ ALL SHOULDER IMPROVEMENTS ADJACENT TO EXISTING GUARDRAIL SHALL BE PERFORMED WITHOUT GUARDRAIL REMOVAL. PAVED SHOULDER REMOVED BEYOND THE FACE OF THE EXISTING GUARDRAIL SHALL BE REPLACED WITH AGGREGATE WEDGE SHOULDER, TYPE B MATERIAL.
- ⑪ NO OVERNIGHT LANE CLOSURES WILL BE PERMITTED.
- ⑫ THE CONTRACTOR SHALL PROVIDE POSITIVE AND ADEQUATE DRAINAGE AT ALL TIMES. SEE ALSO SPECIAL PROVISIONS "HOT-MIX ASPHALT SURFACE REMOVAL WITH SKETCH OF ILLINOIS STANDARD W8-1107".
- ⑬ THE CONTRACTOR SHALL BE AWARE THAT EXISTING CONCRETE PATCHES ARE WITHIN THE PROJECT LIMITS.

MIXTURE REQUIREMENTS

THE FOLLOWING MIXTURE REQUIREMENTS ARE APPLICABLE FOR THIS PROJECT:

MIXTURE USE	SURFACE	BINDER	PATCHING
AC/PG	PG 64-22	PG 64-22	PG 64-22
RAP % (MAX)	SEE SPECIAL PROVISION	SEE SPECIAL PROVISION	SEE SPECIAL PROVISION
DESIGN AIR VOIDS	4.0% @ Ndes=70	4.0% @ Ndes=70	4.0% @ Ndes=70
MIX COMPOSITION	IL 9.5	IL 19.0	IL 19.0
FRICITION AGG	MIXTURE "C"	MIXTURE "B"	MIXTURE "B"
QUALITY MGMT PROGRAM	QCP	QCP	QC/QA

MIXTURE USE	SHOULDERS ≥ 2.25"	SHOULDERS < 2.25"
AC/PG	PG 64-22	PG 64-22
RAP % (MAX)	SEE SPECIAL PROVISION	SEE SPECIAL PROVISION
DESIGN AIR VOIDS	4.0% @ Ndes=70	4.0% @ Ndes=70
MIX COMPOSITION	IL 19.0L	IL 9.5L
FRICITION AGG		
QUALITY MGMT PROGRAM	QC/QA	QC/QA

PLAN QUANTITIES FOR HMA ITEMS ARE CALCULATED USING A UNIT WEIGHT OF 112 LB/SQ YD/IN

COMMITMENTS

NONE

STATE OF ILLINOIS
DEPARTMENT OF TRANSPORTATION

HIGHWAY STANDARDS, GENERAL NOTES, AND COMMITMENTS

SCALE: SHEET 1 OF 1 SHEETS STA. TO STA.

F.A.P RTE.	SECTION	COUNTY	TOTAL SHEETS	SHEET NO.
42	(107, 108)RS-3, (36-2)-IRS-3	BOND	13	2
CONTRACT NO. 76L13				
ILLINOIS		FED. AID PROJECT		

CODE NO.	ITEM	UNIT	TOTAL QUANTITY	CONSTR. CODE	
				80% FED 20% STATE	
				ROADWAY	
				0005	RURAL
40600290	BITUMINOUS MATERIALS (TACK COAT)	POUND	91921	91921	
40600982	HOT-MIX ASPHALT SURFACE REMOVAL - BUTT JOINT	SQ YD	178	178	
40600990	TEMPORARY RAMP	SQ YD	1950	1950	
40603085	HOT-MIX ASPHALT BINDER COURSE, 1L-19.0, N70	TON	17159	17159	
40603315	HOT-MIX ASPHALT SURFACE COURSE, MIX "C", N70	TON	11439	11439	
44000164	HOT-MIX ASPHALT SURFACE REMOVAL, 3 3/4"	SQ YD	136180	136180	
44004250	PAVED SHOULDER REMOVAL	SQ YD	45285	45285	
44200156	PAVEMENT PATCHING, TYPE II, 13 INCH	SQ YD	2189	2189	
44200160	PAVEMENT PATCHING, TYPE III, 13 INCH	SQ YD	971	971	
44200162	PAVEMENT PATCHING, TYPE IV, 13 INCH	SQ YD	2942	2942	
44300200	STRIP REFLECTIVE CRACK CONTROL TREATMENT	FOOT	101418	101418	
48203029	HOT-MIX ASPHALT SHOULDERS, 8"	SQ YD	45285	45285	
64200108	SHOULDER RUMBLE STRIPS, 8 INCH	FOOT	99268	99268	
67000400	ENGINEER'S FIELD OFFICE, TYPE A	CAL MO	11	11	

CODE NO.	ITEM	UNIT	TOTAL QUANTITY	CONSTR. CODE	
				80% FED 20% STATE	
				ROADWAY	
				0005	RURAL
67100100	MOBILIZATION	L SUM	1	1	
70100450	TRAFFIC CONTROL AND PROTECTION, STANDARD 701201	L SUM	1	1	
70100460	TRAFFIC CONTROL AND PROTECTION, STANDARD 701306	L SUM	1	1	
70100500	TRAFFIC CONTROL AND PROTECTION, STANDARD 701326	L SUM	1	1	
70100600	TRAFFIC CONTROL AND PROTECTION, STANDARD 701336	L SUM	1	1	
70103815	TRAFFIC CONTROL SURVEILLANCE	CAL DA	16	16	
70300100	SHORT TERM PAVEMENT MARKING	FOOT	21944	21944	
70300150	SHORT TERM PAVEMENT MARKING REMOVAL	SQ FT	2889	2889	
70300210	TEMPORARY PAVEMENT MARKING LETTERS AND SYMBOLS	SQ FT	122	122	
70300220	TEMPORARY PAVEMENT MARKING - LINE 4"	FOOT	127600	127600	
70300280	TEMPORARY PAVEMENT MARKING - LINE 24"	FOOT	72	72	
* 78000100	THERMOPLASTIC PAVEMENT MARKING - LETTERS AND SYMBOLS	SQ FT	122	122	
* 78000200	THERMOPLASTIC PAVEMENT MARKING - LINE 4"	FOOT	127600	127600	
* 78000650	THERMOPLASTIC PAVEMENT MARKING - LINE 24"	FOOT	72	72	

* SPECIALTY ITEM

STATE OF ILLINOIS
DEPARTMENT OF TRANSPORTATION

SUMMARY OF QUANTITIES

USER NAME = ruholids	DESIGNED -	REVISED -
	DRAWN -	REVISED -
PLOT SCALE = 100,0000' / in.	CHECKED -	REVISED -
PLOT DATE = 5/31/2019	DATE -	REVISED -

SCALE:	SHEET 1	OF 2	SHEETS	STA.	TO STA.	F.A.P. RTE.	SECTION	COUNTY	TOTAL SHEETS	SHEET NO.
						42	(107, 108)RS-3, (36-2)-IRS-3	BOND	13	3
						CONTRACT NO. 76L13				
						ILLINOIS FED. AID PROJECT				

CODE NO.	ITEM	UNIT	TOTAL QUANTITY	CONSTR. CODE	
				80% FED	20% STATE
				ROADWAY	
				0005	
				RURAL	
* 78100100	RAISED REFLECTIVE PAVEMENT MARKER	EACH	634		634
78300200	RAISED REFLECTIVE PAVEMENT MARKER REMOVAL	EACH	634		634
Z0033700	LONGITUDINAL JOINT SEALANT	FOOT	50709		50709
Z0034105	MATERIAL TRANSFER DEVICE	TON	28397		28397
Z0048665	RAILROAD PROTECTIVE LIABILITY INSURANCE	L SUM	1		1
∅ Z0076600	TRAINEES	HOUR	3000		3000
Z0070100	SURVEY MONUMENT COVER ASSEMBLY	EACH	3		3
∅ Z0076604	TRAINEES TRAINING PROGRAM GRADUATE	HOUR	3000		3000
X7030005	TEMPORARY PAVEMENT MARKING REMOVAL	SQ FT	42800		42800

* SPECIALTY ITEM

∅ 0042

MODEL: Default
FILE: \\nrc\p\pub\p\room\dat\illinois.gov\PWIDOT\Documents\DOT_Offices\Director\B\Projects\0876L13\CADD\DATA\CAD\Sheets\0876L13-rh-500.dgn

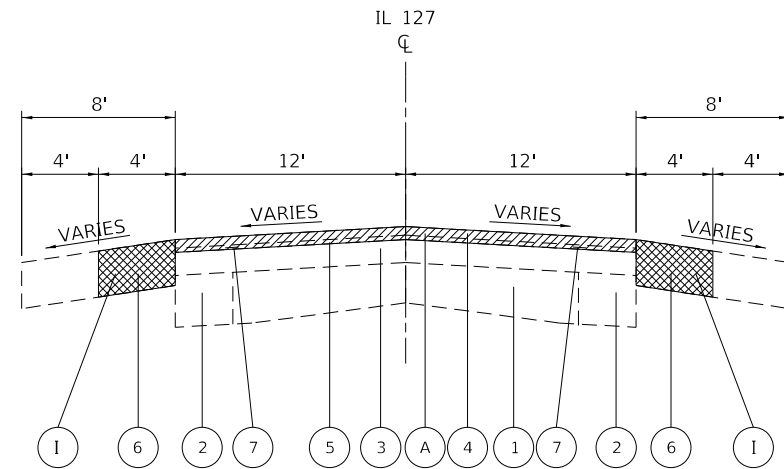
USER NAME = ruholids	DESIGNED -	REVISED -
	DRAWN -	REVISED -
PLOT SCALE = 100.0000' / in.	CHECKED -	REVISED -
PLOT DATE = 5/31/2019	DATE -	REVISED -

**STATE OF ILLINOIS
DEPARTMENT OF TRANSPORTATION**

SUMMARY OF QUANTITIES

SCALE: SHEET 2 OF 2 SHEETS STA. TO STA.

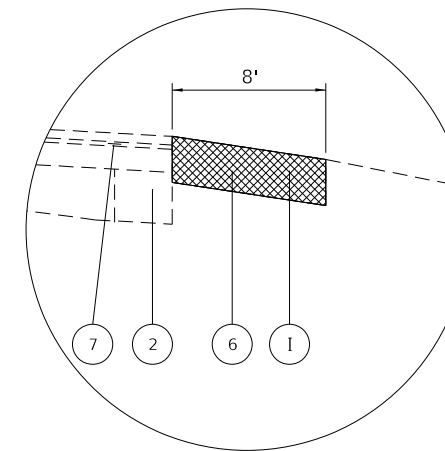
F.A.P. RTE.	SECTION	COUNTY	TOTAL SHEETS	SHEET NO.
42	(107, 108)RS-3, (36-2)-IRS-3	BOND	13	4
			CONTRACT NO. 76L13	
		ILLINOIS	FED. AID PROJECT	



EXISTING TYPICAL SECTION

MI. STA. 0.057 TO 5.477
 MI. STA. 5.479 TO 9.663

(SEE SHOULDER DETAIL AT ENTRANCES)



SHOULDER DETAIL AT ENTRANCES

SEE RESURFACING DETAILS FOR ADDITIONAL INFORMATION
 (SEE ENTRANCE SCHEDULE FOR LOCATIONS)

LEGEND

- ① EXISTING CONCRETE PAVEMENT (9"-7"-9")
- ② EXISTING BASE COURSE WIDENING (BITUMINOUS) 9"
- ③ EXISTING HMA RESURFACING VARIES (2" TO 7½")
- ④ EXISTING HMA SURFACE COURSE 1½"
- ⑤ EXISTING HMA LEVELING BINDER ¾"
- ⑥ EXISTING STABILIZED SHOULDER 8"
- ⑦ EXISTING STRIP REFLECTIVE CRACK CONTROL
- Ⓐ PROPOSED HOT-MIX ASPHALT SURFACE REMOVAL, ¾"
- Ⓑ PROPOSED BITUMINOUS MATERIAL (TACK COAT)
- Ⓒ PROPOSED HOT-MIX ASPHALT BINDER COURSE, IL-19.0, N70 (2¼")
- Ⓓ PROPOSED HOT-MIX ASPHALT SURFACE COURSE, MIX "C", N70 (1½")
- Ⓔ PROPOSED LONGITUDINAL JOINT SEALANT
- Ⓕ PROPOSED STRIP REFLECTING CRACK CONTROL TREATMENT
- Ⓖ PROPOSED THERMOPLASTIC PAVEMENT MARKING
- Ⓗ PROPOSED SHOULDER RUMBLE STRIP, 8 INCH
- Ⓘ PROPOSED PAVED SHOULDER REMOVAL
- Ⓝ PROPOSED HOT-MIX ASPHALT SHOULDERS 8"

MODEL: Default
 FILE: \\nrcs-pix\pub\room\dat\illinois.gov\PIWIDOT\Documents\DOT_Offices\District_8\Projects\0876113\CADD\data\CAD\sheet\0876113.rht-typical.dgn

USER NAME = ruholids	DESIGNED -	REVISED -
	DRAWN -	REVISED -
PLOT SCALE = 100.0000' / in.	CHECKED -	REVISED -
PLOT DATE = 5/31/2019	DATE -	REVISED -

**STATE OF ILLINOIS
 DEPARTMENT OF TRANSPORTATION**

TYPICAL SECTIONS

SCALE: SHEET 1 OF 2 SHEETS STA. TO STA.

F.A.P. RTE.	SECTION	COUNTY	TOTAL SHEETS	SHEET NO.
42	(107, 108)RS-3, (36-2)-IRS-3	BOND	13	5
CONTRACT NO. 76L13				
		ILLINOIS	FED. AID PROJECT	

NB PAVEMENT PATCHING 13 INCH SCHEDULE

NB PAVEMENT PATCHING 13 INCH SCHEDULE							NB PAVEMENT PATCHING 13 INCH SCHEDULE							NB PAVEMENT PATCHING 13 INCH SCHEDULE						
LOCATION		LENGTH	WIDTH	PAVEMENT PATCHING TYPE II	PAVEMENT PATCHING TYPE III	PAVEMENT PATCHING TYPE IV	LOCATION		LENGTH	WIDTH	PAVEMENT PATCHING TYPE II	PAVEMENT PATCHING TYPE III	PAVEMENT PATCHING TYPE IV	LOCATION		LENGTH	WIDTH	PAVEMENT PATCHING TYPE II	PAVEMENT PATCHING TYPE III	PAVEMENT PATCHING TYPE IV
MI. STA.	NB/SB	(FT)	(FT)	(SQ YD)	(SQ YD)	(SQ YD)	MI. STA.	NB/SB	(FT)	(FT)	(SQ YD)	(SQ YD)	(SQ YD)	MI. STA.	NB/SB	(FT)	(FT)	(SQ YD)	(SQ YD)	(SQ YD)
0.257	NB	12	20			26.7	3.318	NB	12	8	10.7			6.534	NB	12	15			20.0
0.374	NB	12	20			26.7	3.349	NB	12	8	10.7			6.561	NB	12	12			16.0
0.586	NB	12	12		16.0		3.405	NB	12	12		16.0		6.584	NB	12	15			20.0
0.652	NB	12	15		20.0		3.530	NB	12	12		16.0		6.641	NB	12	12			16.0
0.780	NB	12	6	8.0			3.731	NB	12	25			33.3	6.723	NB	12	12			16.0
0.815	NB	12	12		16.0		3.758	NB	12	40			53.3	7.374	NB	12	8	10.7		
0.859	NB	12	6	8.0			3.807	NB	12	15		20.0		7.405	NB	12	8	10.7		
0.976	NB	6	120			80.0	4.018	NB	12	8	10.7			7.433	NB	12	8	10.7		
1.066	NB	12	8	10.7			4.129	NB	12	8	10.7			7.535	NB	12	8	10.7		
1.108	NB	12	8	10.7			4.135	NB	12	8	10.7			7.620	NB	12	8	10.7		
1.136	NB	12	8	10.7			4.140	NB	12	8	10.7			7.752	NB	12	20			26.7
1.155	NB	6	160			106.7	4.153	NB	12	8	10.7			7.797	NB	12	8	10.7		
1.254	NB	12	8	10.7			4.205	NB	6	300			200.0	7.867	NB	12	8	10.7		
1.316	NB	12	8	10.7			4.484	NB	6	100			66.7	8.325	NB	12	12		16.0	
1.335	NB	12	8	10.7			4.584	NB	6	600			400.0	8.363	NB	12	10	13.3		
1.477	NB	12	8	10.7			4.707	NB	6	100			66.7	8.701	NB	12	10	13.3		
1.765	NB	12	8	10.7			4.826	NB	12	20			26.7	8.745	NB	12	12		16.0	
1.851	NB	12	40			53.3	4.867	NB	12	8	10.7			8.816	NB	12	8	10.7		
1.894	NB	12	8	10.7			4.876	NB	12	8	10.7			9.237	NB	12	8	10.7		
2.023	NB	12	8	10.7			4.883	NB	12	15		20.0		9.255	NB	12	8	10.7		
2.059	NB	12	8	10.7			4.903	NB	12	12		16.0		9.337	NB	12	8	10.7		
2.084	NB	12	8	10.7			4.923	NB	12	15		20.0		9.389	NB	12	12		16.0	
2.118	NB	12	8	10.7			5.008	NB	12	8	10.7									
2.140	NB	12	8	10.7			5.047	NB	12	8	10.7									
2.151	NB	12	8	10.7			5.053	NB	12	20			26.7							
2.159	NB	12	12		16.0		5.070	NB	12	8	10.7									
2.172	NB	12	8	10.7			5.102	NB	12	40			53.3							
2.200	NB	12	12		16.0		5.167	NB	12	15		20.0								
2.216	NB	12	8	10.7			5.379	NB	12	30			40.0							
2.227	NB	12	8	10.7			5.465	NB	12	10	13.3									
2.245	NB	12	15		20.0		5.523	NB	12	8	10.7									
2.277	NB	12	8	10.7			5.555	NB	12	8	10.7									
2.368	NB	12	8	10.7			5.596	NB	12	8	10.7									
2.398	NB	12	20			26.7	5.605	NB	12	8	10.7									
2.438	NB	12	8	10.7			5.615	NB	12	10	13.3									
2.472	NB	12	20			26.7	5.621	NB	12	8	10.7									
2.518	NB	12	8	10.7			5.667	NB	12	8	10.7									
2.606	NB	12	25			33.3	5.676	NB	12	8	10.7									
2.615	NB	12	8	10.7			5.685	NB	12	10	13.3									
2.654	NB	12	25			33.3	5.744	NB	12	10	13.3									
2.686	NB	12	8	10.7			5.773	NB	12	8	10.7									
2.726	NB	12	8	10.7			5.794	NB	12	8	10.7									
2.748	NB	12	20			26.7	5.883	NB	12	10	13.3									
2.779	NB	12	10	13.3			5.993	NB	12	10	13.3									
2.798	NB	12	8	10.7			6.096	NB	12	15		20.0								
2.852	NB	12	8	10.7			6.121	NB	12	8	10.7									
2.887	NB	12	8	10.7			6.195	NB	12	25			33.3							
2.900	NB	12	8	10.7			6.246	NB	12	8	10.7									
2.964	NB	12	20			26.7	6.269	NB	12	20			26.7							
3.144	NB	12	8	10.7			6.279	NB	12	12		16.0								
3.172	NB	12	8	10.7			6.294	NB	12	8	10.7									
3.197	NB	12	8	10.7			6.314	NB	12	10	13.3									
3.216	NB	12	8	10.7			6.319	NB	12	8	10.7									
3.232	NB	12	8	10.7			6.351	NB	12	8	10.7									
3.249	NB	12	8	10.7			6.376	NB	12	8	10.7									
3.258	NB	12	8	10.7			6.440	NB	12	15		20.0								
3.284	NB	12	8	10.7			6.476	NB	12	25			33.3							
3.298	NB	12	8	10.7			6.515	NB	12	8	10.7									
NB LANE SUBTOTAL 1				435.9	104.0	466.8	SB LANE SUBTOTAL 2				392.7	184.0	1060.0	NB LANE SUBTOTAL 3				144.3	136.0	26.7
NB LANE SUBTOTAL							NB LANE SUBTOTAL							NB LANE SUBTOTAL						
NB LANE SUBTOTAL 1				435.9	104.0	466.8	NB LANE SUBTOTAL 2				392.7	184.0	1060.0	NB LANE SUBTOTAL 3				144.3	136.0	26.7
NB LANE SUBTOTAL 2				392.7	184.0	1060.0	NB LANE SUBTOTAL 3				144.3	136.0	26.7	NB LANE SUBTOTAL				972.9	424.0	1553.5
NB LANE SUBTOTAL 3				144.3	136.0	26.7	NB LANE SUBTOTAL				972.9	424.0	1553.5	NB LANE SUBTOTAL				972.9	424.0	1553.5

MODEL: Default
 FILE: \\nhdpc-pix\pub\room\dat\illinois.gov\PWIDOT\Documents\DOT_Offices\Illinotc_B\Projects\0876113\CADD\Drawings\0876113-13-inch-schedule.dgn

USER NAME = ruholids	DESIGNED -	REVISED -
PLOT SCALE = 100.0000' / in.	DRAWN -	REVISED -
PLOT DATE = 5/31/2019	CHECKED -	REVISED -
	DATE -	REVISED -

**STATE OF ILLINOIS
DEPARTMENT OF TRANSPORTATION**

SCHEDULE OF QUANTITIES

SCALE: SHEET 3 OF 4 SHEETS STA. TO STA.

F.A.P. RTE.	SECTION	COUNTY	TOTAL SHEETS	SHEET NO.
42	(107, 108)RS-3, (36-2)-IRS-3	BOND	13	9
CONTRACT NO. 76L13				
ILLINOIS FED. AID PROJECT				

SB PAVEMENT PATCHING 13 INCH SCHEDULE

LOCATION		LENGTH	WIDTH	PAVEMENT PATCHING TYPE II	PAVEMENT PATCHING TYPE III	PAVEMENT PATCHING TYPE IV
MI. STA.	NB/SB	(FT)	(FT)	(SQ YD)	(SQ YD)	(SQ YD)
0.257	SB	12	20			26.7
0.374	SB	12	20			26.7
0.397	SB	12	12		16.0	
0.586	SB	12	12		16.0	
0.652	SB	12	15		20.0	
0.815	SB	12	12		16.0	
0.859	SB	12	6	8.0		
0.960	SB	12	6	8.0		
1.013	SB	6	260			173.3
1.108	SB	12	8	10.7		
1.136	SB	12	8	10.7		
1.174	SB	6	40			26.7
1.406	SB	6	50			33.3
1.477	SB	12	8	10.7		
1.765	SB	12	8	10.7		
1.851	SB	12	40			53.3
1.894	SB	12	8	10.7		
2.023	SB	12	8	10.7		
2.059	SB	12	8	10.7		
2.084	SB	12	8	10.7		
2.118	SB	12	8	10.7		
2.140	SB	12	8	10.7		
2.159	SB	12	12		16.0	
2.172	SB	12	8	10.7		
2.200	SB	12	12		16.0	
2.216	SB	12	8	10.7		
2.227	SB	12	8	10.7		
2.245	SB	12	15		20.0	
2.277	SB	12	8	10.7		
2.387	SB	12	8	10.7		
2.398	SB	12	20			26.7
2.438	SB	12	8	10.7		
2.472	SB	12	20			26.7
2.518	SB	12	8	10.7		
2.606	SB	12	25			33.3
2.654	SB	12	25			33.3
2.686	SB	12	8	10.7		
2.726	SB	12	8	10.7		
2.748	SB	12	20			26.7
2.779	SB	12	10	13.3		
2.798	SB	12	8	10.7		
2.852	SB	12	8	10.7		
2.887	SB	12	8	10.7		
2.900	SB	12	8	10.7		
2.964	SB	12	20			26.7
3.144	SB	12	8	10.7		
3.172	SB	12	8	10.7		
3.197	SB	12	8	10.7		
3.216	SB	12	8	10.7		
3.232	SB	12	8	10.7		
3.249	SB	12	8	10.7		
3.258	SB	12	8	10.7		
3.284	SB	12	8	10.7		
3.298	SB	12	8	10.7		
3.318	SB	12	8	10.7		
3.349	SB	12	8	10.7		
3.405	SB	12	12		16.0	
3.530	SB	12	12		16.0	
SB LANE SUBTOTAL 1				393.1	152.0	513.4
SB LANE SUBTOTAL						
SB LANE SUBTOTAL 1				393.1	152.0	513.4
SB LANE SUBTOTAL 2				414.1	220.0	326.6
SB LANE SUBTOTAL 3				122.9	48.0	26.7
SB LANE SUBTOTAL				930.1	420.0	866.7

LOCATION		WIDTH	LENGTH	PAVEMENT PATCHING TYPE II	PAVEMENT PATCHING TYPE III	PAVEMENT PATCHING TYPE IV
MI. STA.	NB/SB	(FT)	(FT)	(SQ YD)	(SQ YD)	(SQ YD)
3.731	SB	12	25			33.3
3.758	SB	12	40			53.3
4.018	SB	12	8	10.7		
4.091	SB	12	8	10.7		
4.102	SB	12	8	10.7		
4.129	SB	12	8	10.7		
4.135	SB	12	8	10.7		
4.140	SB	12	8	10.7		
4.153	SB	12	8	10.7		
4.167	SB	12	8	10.7		
4.826	SB	12	20			26.7
4.867	SB	12	8	10.7		
4.876	SB	12	8	10.7		
4.883	SB	12	15		20.0	
4.903	SB	12	12		16.0	
4.923	SB	12	15		20.0	
5.008	SB	12	8	10.7		
5.047	SB	12	8	10.7		
5.053	SB	12	20			26.7
5.070	SB	12	8	10.7		
5.102	SB	12	40			53.3
5.167	SB	12	15		20.0	
5.379	SB	12	30			40.0
5.465	SB	12	10	13.3		
5.523	SB	12	8	10.7		
5.555	SB	12	8	10.7		
5.596	SB	12	8	10.7		
5.605	SB	12	8	10.7		
5.615	SB	12	10	13.3		
5.621	SB	12	8	10.7		
5.667	SB	12	8	10.7		
5.676	SB	12	8	10.7		
5.685	SB	12	10	13.3		
5.744	SB	12	10	13.3		
5.773	SB	12	8	10.7		
5.794	SB	12	8	10.7		
5.883	SB	12	10	13.3		
5.993	SB	12	10	13.3		
6.096	SB	12	15		20.0	
6.121	SB	12	8	10.7		
6.195	SB	12	25			33.3
6.246	SB	12	8	10.7		
6.269	SB	12	20			26.7
6.279	SB	12	12		16.0	
6.294	SB	12	8	10.7		
6.314	SB	12	10	13.3		
6.319	SB	12	8	10.7		
6.351	SB	12	8	10.7		
6.376	SB	12	8	10.7		
6.440	SB	12	15		20.0	
6.476	SB	12	25			33.3
6.515	SB	12	8	10.7		
6.534	SB	12	15		20.0	
6.561	SB	12	12		16.0	
6.584	SB	12	15		20.0	
6.641	SB	12	12		16.0	
6.723	SB	12	12		16.0	
7.374	SB	12	8	10.7		
SB LANE SUBTOTAL 2				414.1	220.0	326.6

LOCATION		WIDTH	LENGTH	PAVEMENT PATCHING TYPE II	PAVEMENT PATCHING TYPE III	PAVEMENT PATCHING TYPE IV
MI. STA.	NB/SB	(FT)	(FT)	(SQ YD)	(SQ YD)	(SQ YD)
7.405	SB	12	8	10.7		
7.433	SB	12	8	10.7		
7.620	SB	12	8	10.7		
7.752	SB	12	20			26.7
7.797	SB	12	8	10.7		
7.867	SB	12	8	10.7		
8.325	SB	12	12		16.0	
8.363	SB	12	10	13.3		
8.701	SB	12	10	13.3		
8.745	SB	12	12		16.0	
8.816	SB	12	8	10.7		
9.237	SB	12	8	10.7		
9.255	SB	12	8	10.7		
9.337	SB	12	8	10.7		
9.389	SB	12	12		16.0	
SB LANE SUBTOTAL 3				122.9	48.0	26.7

PATCHING GRAND TOTAL			
	PAVEMENT PATCHING TYPE II	PAVEMENT PATCHING TYPE III	PAVEMENT PATCHING TYPE IV
NB LANE SUBTOTAL	972.9	424.0	1553.5
SB LANE SUBTOTAL	930.1	420.0	866.7
SIDE ROAD SCHEDULE SUBTOTAL	0.0	0.0	137.8
PATCHING SUBTOTAL	1903.0	844.0	2558.0
ANTICIPATED FAILURES (15%)	285.5	126.6	383.7
GRAND TOTAL	2189	971	2942

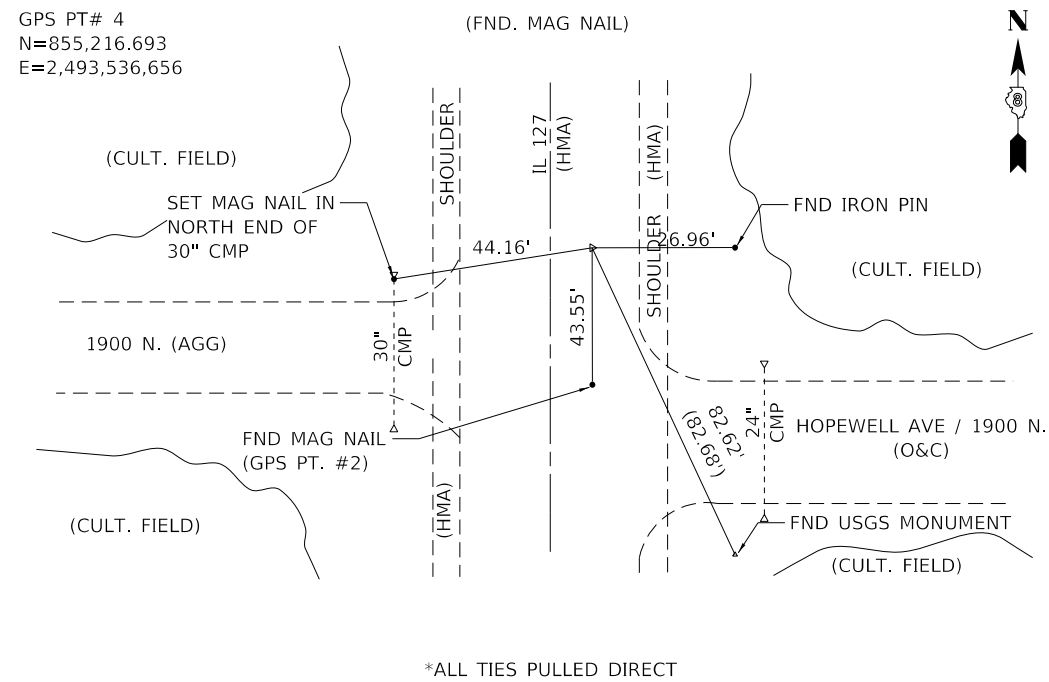
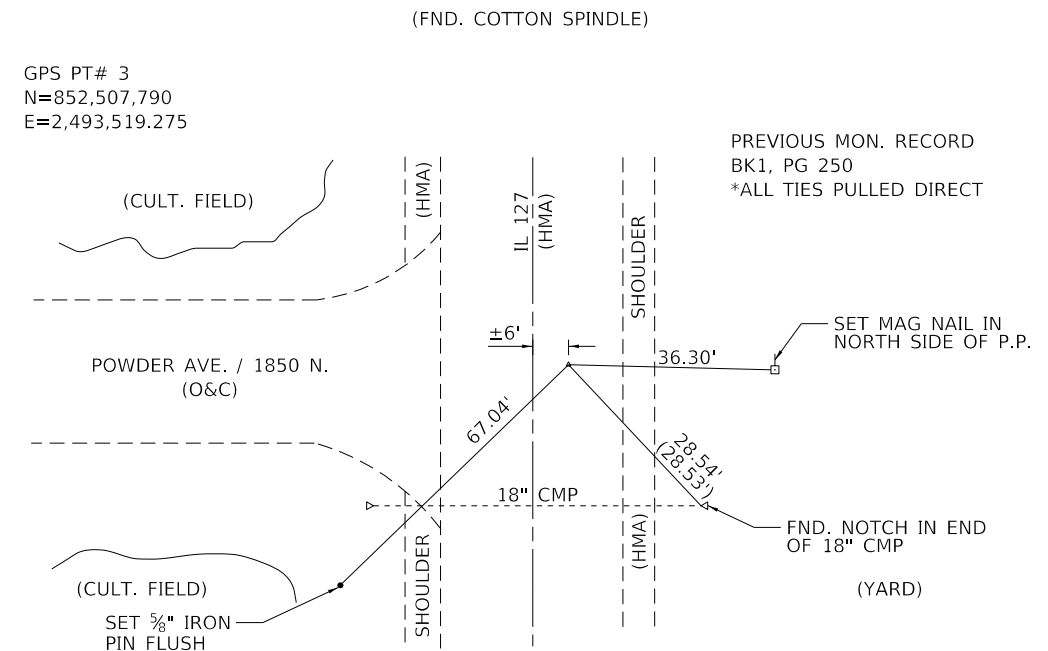
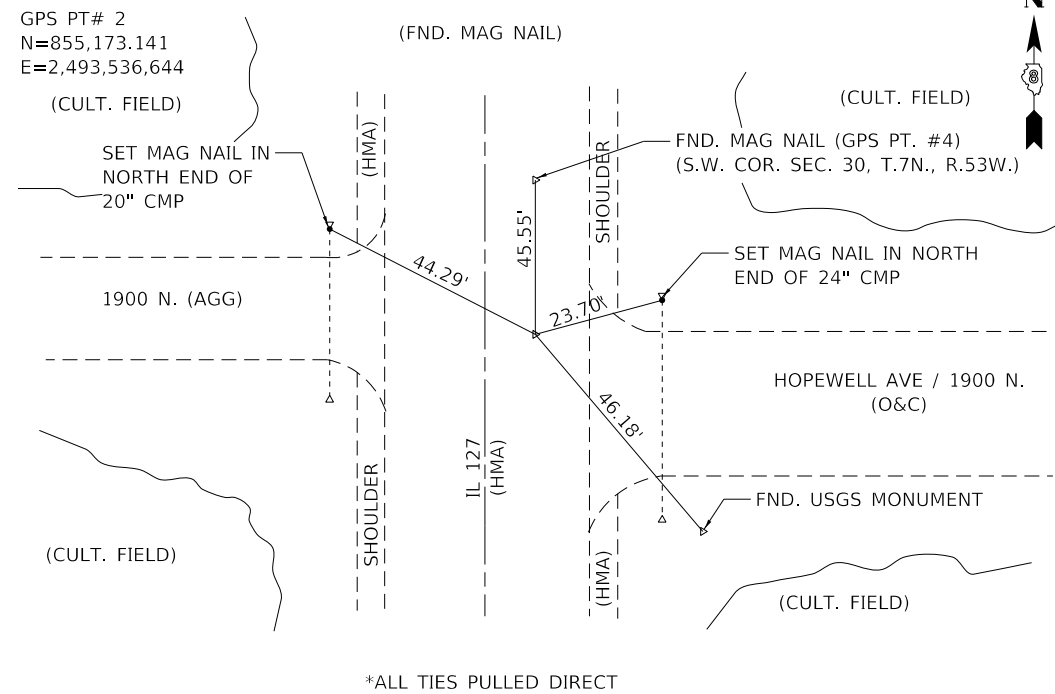
MODEL: Default
FILE: \\hpc\pub\hpcroom\dat\illinois\gov\pww\DOT\Documents\DOT_Offices\Illinois\Projects\0876113\sb-13-sched-13.dgn

USER NAME = ruholids	DESIGNED -	REVISED -
PLOT SCALE = 100.0000' / in.	DRAWN -	REVISED -
PLOT DATE = 5/31/2019	CHECKED -	REVISED -
	DATE -	REVISED -

**STATE OF ILLINOIS
DEPARTMENT OF TRANSPORTATION**

SCHEDULE OF QUANTITIES			
SCALE:	SHEET 4	OF 4	SHEETS
	STA.		TO STA.

F.A.P. RTE.	SECTION	COUNTY	TOTAL SHEETS	SHEET NO.
42	(107, 108)RS-3, (36-2)-IRS-3	BOND	13	10
CONTRACT NO. 76L13				
ILLINOIS FED. AID PROJECT				



MODEL: Default
 FILE: \\nrcs-pix\pub\room\dat\illinois.gov\PW\DOT\Documents\DOT_Offices\Dir\ctc @ Projects\076L13\CADD\data\CAD\sheet\076L13-shr-draw\ill.dgn

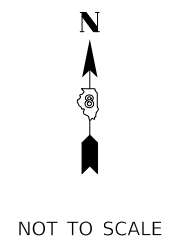
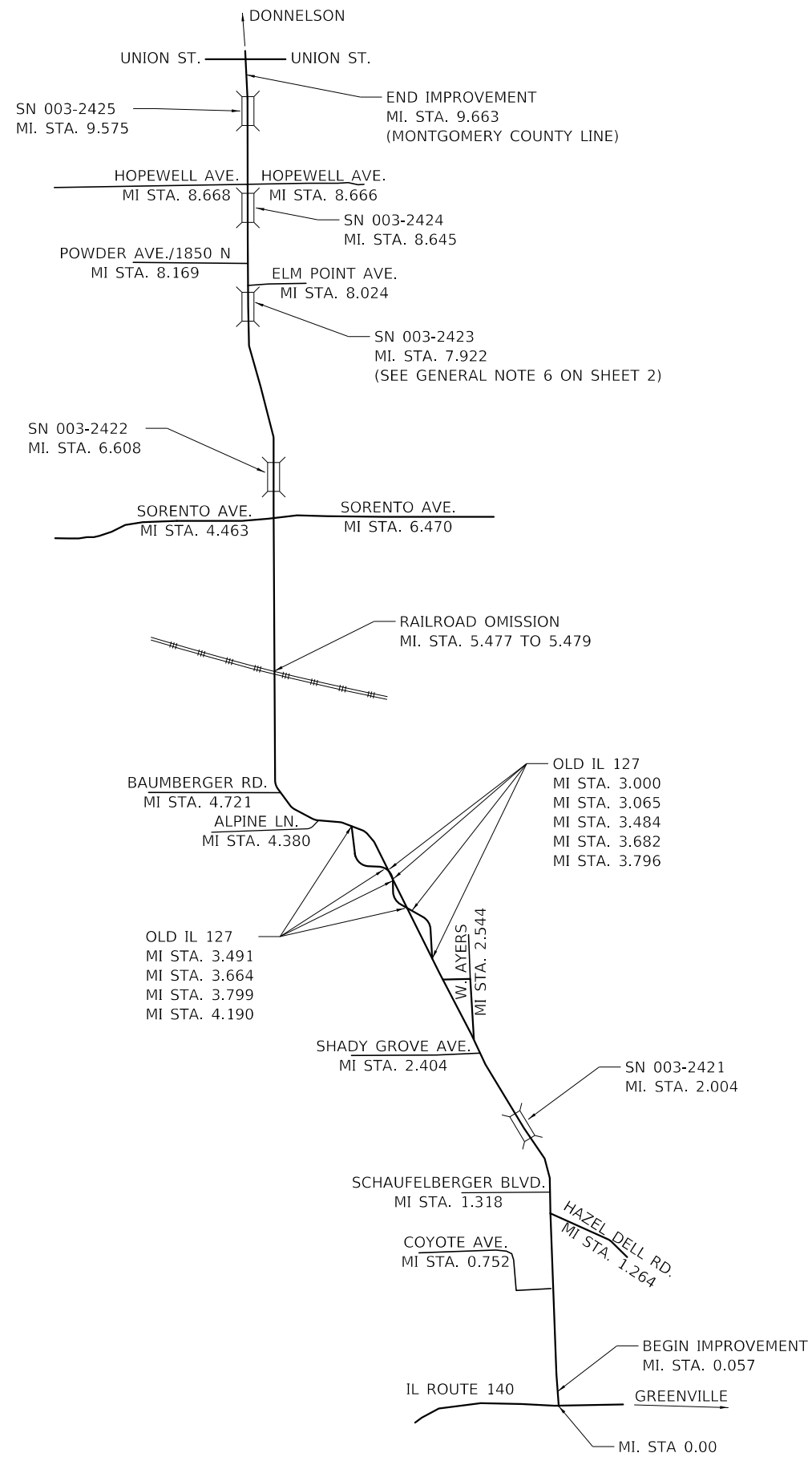
USER NAME = ruholids	DESIGNED -	REVISED -
	DRAWN -	REVISED -
PLOT SCALE = 100,0000' / in.	CHECKED -	REVISED -
PLOT DATE = 5/31/2019	DATE -	REVISED -

**STATE OF ILLINOIS
DEPARTMENT OF TRANSPORTATION**

SURVEYTIES

SCALE: N.T.S. SHEET 1 OF 1 SHEETS STA. TO STA.

F.A.P. RTE.	SECTION	COUNTY	TOTAL SHEETS	SHEET NO.
42	(107, 108)RS-3, (36-2)-1RS-3	BOND	13	11
CONTRACT NO. 76L13				
ILLINOIS FED. AID PROJECT				



MODEL: Default
 FILE: \\nrcs-pix\uplanroom\data\illinois.gov\PWIDOT\Documents\DOT_Offices\District 8\Projects\0876L13\CADD\data\CAD\Sheets\0876L13-rtr-deails.dgn

USER NAME = ruholids	DESIGNED -	REVISED -
	DRAWN -	REVISED -
PLOT SCALE = 100,0000' / in.	CHECKED -	REVISED -
PLOT DATE = 5/31/2019	DATE -	REVISED -

STATE OF ILLINOIS
DEPARTMENT OF TRANSPORTATION

LOCATION MAP

SCALE: N.T.S. SHEET 1 OF 1 SHEETS STA. TO STA.

F.A.P. RTE.	SECTION	COUNTY	TOTAL SHEETS	SHEET NO.
42	(107, 108)RS-3, (36-2)-IRS-3	BOND	13	12
CONTRACT NO. 76L13				
ILLINOIS		FED. AID PROJECT		

