

STATE OF ILLINOIS
DEPARTMENT OF TRANSPORTATION

F.A.P. RTE.	SECTION	COUNTY	TOTAL SHEETS	SHEET NO.
312	72RS-4	RANDOLPH	6	1
ILLINOIS			CONTRACT NO. 76L19	

D-98-027-18



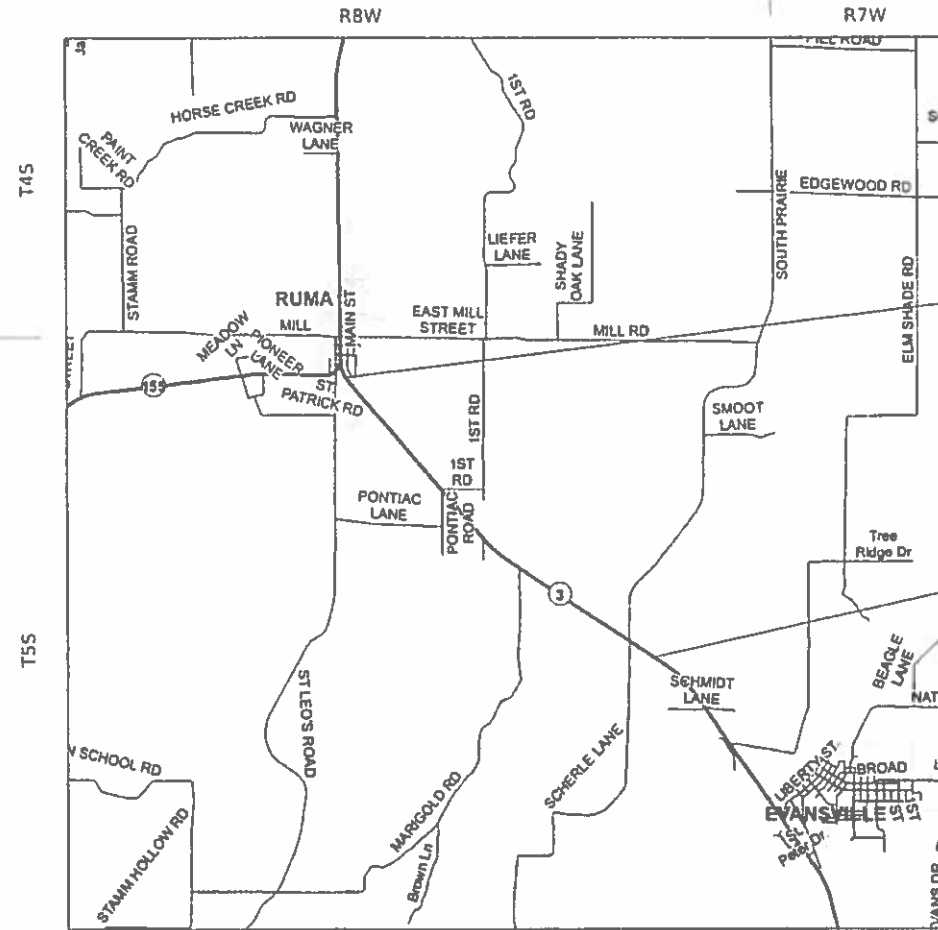
LOCATION OF SECTION INDICATED THUS: -

FOR INDEX OF SHEETS, SEE SHEET NO. 2

PROPOSED HIGHWAY PLANS

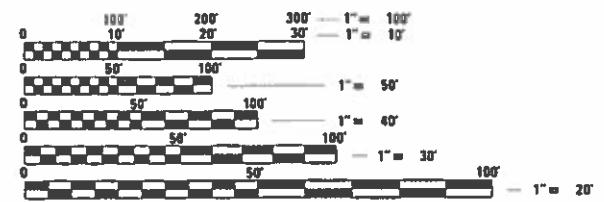
FAP ROUTE 312 (IL 3)
SECTION 72RS-4
PROJECT NHPP-GFAF(273)
RESURFACING
RANDOLPH COUNTY

C-98-167-18



BEGIN PROJECT
M.P. 0.00
LAT.: 38.13024
LONG.: -89.99670

END PROJECT
M.P. 2.83
LAT.: 38.10299
LONG.: -89.95847



FULL SIZE PLANS HAVE BEEN PREPARED USING STANDARD ENGINEERING SCALES. REDUCED SIZED PLANS WILL NOT CONFORM TO STANDARD SCALES. IN MAKING MEASUREMENTS ON REDUCED PLANS, THE ABOVE SCALES MAY BE USED.

J.U.L.I.E.
JOINT UTILITY LOCATION INFORMATION FOR EXCAVATION
1-800-892-0123
OR 811

PROJECT ENGINEER: HERVE GELIN (618) 346-3179
PROJECT MANAGER: BILLIE OWEN (618) 346-3209

CONTRACT NO. 76L19

GROSS /NET LENGTH = 14,950.00 FT. = 2.831 MILE

MAP NOT TO SCALE

TRAFFIC DATA

2017 ADT = 3300 (ACTUAL)
2018 ADT = 3350 (ESTIMATED)
2038 ADT = 4350 (ESTIMATED)
SU = 5.5'
MU = 5.5'

STATE OF ILLINOIS
DEPARTMENT OF TRANSPORTATION

SUBMITTED May 31 2019

Keith Roberts
REGIONAL ENGINEER

June 11 2019
E.A. Elk
ENGINEER OF DESIGN AND ENVIRONMENT

June 19 2019
Paul P. Chif
DIRECTOR OF HIGHWAYS PROJECT IMPLEMENTATION

PRINTED BY THE AUTHORITY
OF THE STATE OF ILLINOIS

INDEX OF SHEETS

- 1 COVER SHEET
- 2 INDEX OF SHEETS, HIGHWAY STANDARDS, GENERAL NOTES, COMMITMENTS AND MIX CHART
- 3-4 SUMMARY OF QUANTITIES
- 5 TYPICAL SECTIONS
- 6 SCHEDULE OF QUANTITIES

STANDARDS

- 000001-07 STANDARD SYMBOLS, ABBREVIATIONS AND PATTERNS
- 001001-02 AREAS OF REINFORCEMENT BARS
- 001006 DECIMAL OF AN INCH AND OF A FOOT
- 406201-01 MAILBOX TURNOUT
- 442201-03 CLASS C AND D PATCHES
- 701006-05 OFF-RD OPERATIONS, 2L, 2W, 15' TO 24" FROM PAVEMENT EDGE
- 701011-04 OFF-RD MOVING OPERATIONS, 2L, 2W, DAY ONLY
- 701201-05 LANE CLOSURE, 2L, 2W, DAY ONLY, FOR SPEEDS ≥ 45 MPH
- 701301-04 LANE CLOSURE, 2L, 2W, SHORT TIME OPERATIONS
- 701306-04 LANE CLOSURE, 2L, 2W, SLOW MOVING OPERATIONS DAY ONLY, FOR SPEEDS ≥ 45 MPH
- 701311-03 LANE CLOSURE, 2L, 2W, MOVING OPERATIONS - DAY ONLY
- 701336-07 LANE CLOSURE, 2L, 2W, WORK AREAS IN SERIES, FOR SPEEDS ≥ 45 MPH
- 701901-08 TRAFFIC CONTROL DEVICES
- 780001-05 TYPICAL PAVEMENT MARKINGS
- 781001-04 TYPICAL APPLICATIONS RAISED REFLECTIVE PAVEMENT MARKERS

GENERAL NOTES

1 ILLINOIS STATE LAW REQUIRES A 48-HOUR NOTICE BE GIVEN TO ALL UTILITIES WITHIN THE PROJECT AREA BEFORE DIGGING. FIELD MARKING OF FACILITIES MAY BE OBTAINED BY CONTACTING J.U.L.I.E. OR FOR NON-MEMBERS, THE UTILITY COMPANY DIRECTLY. AGENCIES KNOWN TO HAVE FACILITIES WITHIN THE PROJECT AREA ARE AS FOLLOWS:

- * AMEREN ILLINOIS
- * EGYPTIAN ELECTRIC COOPERATIVE ASSOCIATION
- * FRONTIER COMMUNICATIONS
- * HARRISONVILLE TELEPHONE COMPANY
- * NEWWAVE COMMUNICATIONS
- * VILLAGE OF RUMA

MEMBERS OF J.U.L.I.E. CALL TOLL FREE (800) 892-0123 OR 811 AND ARE INDICATED BY *. NON-J.U.L.I.E. MEMBERS MUST BE NOTIFIED INDIVIDUALLY.

2 THE CONTRACTOR AND THE ENGINEER SHALL BE AWARE THAT NO SURVEY WAS PERFORMED FOR THIS PROJECT. THE STATIONING, TOPOGRAPHY, AND QUANTITIES SHOWN IN THE PLANS WERE CREATED USING MICROFILM AND FIELD MEASUREMENTS. ALL SHALL BE ASSUMED TO BE APPROXIMATE. THE CONTRACTOR SHALL VERIFY DIMENSIONS AND CONDITIONS IN THE FIELD PRIOR TO CONSTRUCTION AND ORDERING OF MATERIALS.

3 NO OVERNIGHT LANE CLOSURES WILL BE PERMITTED.

4 THE THICKNESS OF HOT-MIX ASPHALT SURFACE MIXTURES SHOWN ON THE PLANS IS THE NOMINAL THICKNESS. DEVIATIONS MAY OCCUR DUE TO IRREGULARITIES IN THE EXISTING SURFACE OR BASE ON WHICH THE HOT-MIX ASPHALT MIXTURE IS PLACED.

5 THE PROPOSED PAVEMENT MARKING SHALL MATCH THE LOCATIONS OF THE EXISTING PAVEMENT MARKING, AS DIRECTED BY THE ENGINEER.

6 THE RESIDENT ENGINEER SHALL VERIFY THE EXISTENCE OF HIGHWAY LIGHTING AND/OR INTELLIGENT TRANSPORTATION SYSTEMS (I.T.S.) UTILITIES WITHIN THE PROJECT LIMITS. IF HIGHWAY LIGHTING AND/OR I.T.S. EXISTS WITHIN THE PROJECT LIMITS, AND IF THESE ITEMS REQUIRE LOCATING, THE CONTRACTOR SHALL BE DIRECTED TO DO SO ACCORDING TO SECTION 803 OF THE STANDARD SPECIFICATIONS. THIS WORK SHALL BE PAID FOR ACCORDING TO ARTICLE 109.04 OF THE STANDARD SPECIFICATION.

7 ONLY SHORT TERM PAVEMENT MARKING REMOVAL FROM THE FINAL SURFACE SHALL BE PAID FOR AS "SHORT TERM PAVEMENT MARKING REMOVAL".

8 THE USE OF A MATERIAL TRANSFER DEVICE SHALL BE PERMITTED FOR THE PAVING OPERATIONS OF THIS PROJECT. HOWEVER, THE MATERIAL TRANSFER DEVICE SHALL BE EMPTY WHEN PASSING OVER THE FOLLOWING STRUCTURES:
 SN 079-2414
 SN 079-2415
 SN 079-2416
 SN 079-2417

9 IF THE PROPOSED SURFACE REMOVAL ON THIS PROJECT PRODUCES A MILLED EDGE NEAR CENTERLINE GREATER THAN 1.5 INCHES OR IF THE PROPOSED RESURFACING RESULTS IN AN ELEVATION DIFFERENCE GREATER THAN 2 INCHES NEAR THE CENTERLINE BETWEEN ADJACENT OPEN LANES OF TRAFFIC, ONE OF THE FOLLOWING SHALL APPLY:

- * THE CONTRACTOR SHALL ORGANIZE THE WORK TO AVOID THE ELEVATION DIFFERENCES MENTIONED ABOVE.
- * THE CONTRACTOR SHALL CONSTRUCT A TEMPORARY HOT MIX ASPHALT WEDGE ALONG THE CENTERLINE TO AVOID THE ELEVATION DIFFERENCES MENTIONED ABOVE.
- * THE CONTRACTOR SHALL CONSTRUCT A MILLED SLOPE EDGE (MINIMUM 1:3) ALONG THE CENTERLINE TO AVOID THE ELEVATION DIFFERENCES MENTIONED ABOVE.

THE COST OF THIS WORK SHALL BE INCLUDED IN THE COST PER SQUARE YARD FOR HOT-MIX ASPHALT SURFACE REMOVAL OF THE DEPTH SPECIFIED OR IN THE COST PER TON FOR THE HOT-MIX ASPHALT RESURFACING IXES SPECIFIED IN THE PLANS.

COMMITMENTS

NONE

MIXTURE CHART

MIXTURE USE	PAVEMENT PATCHING	SURFACE	LEVEL BINDER
AC/PG	PG 64-22	PG 64-22	PG 64-22
RAP% (MAX)	SEE SPECIAL PROVISION	SEE SPECIAL PROVISION	SEE SPECIAL PROVISION
DESIGN AIR VOIDS	4.0% @ Ndes=70	4.0% @ Ndes=70	4.0% @ Ndes=70
MIX COMPOSITION (GRADATION)	1L 19.0	1L 9.5	1L 9.5 FG
FRICTION AGG	MIXTURE "B"	MIXTURE "C"	MIXTURE "C"
QUALITY MGMT PROGRAM	QC/QA	QCP	QCP

PLAN QUANTITIES FOR HOT-MIX ASPHALT ITEMS ARE CALCULATED USING A UNIT WEIGHT OF 112 LB/SQ YD/IN.

MODEL: Default
 FILE: \\hpc-p1x1\planroom\dat\illinois.gov\PIWDOT\Documents\DOT_Offices\Illinietc @Projects\076L19\CaddData\CAD\Sheets\076L19-shc-nemore.dgn

USER NAME = challandeske	DESIGNED -	REVISED -
	DRAWN -	REVISED -
PLOT SCALE = 100.0000 ' / in.	CHECKED -	REVISED -
PLOT DATE = 5/31/2019	DATE -	REVISED -

**STATE OF ILLINOIS
DEPARTMENT OF TRANSPORTATION**

**INDEX OF SHEETS, HIGHWAY STANDARDS
GENERAL NOTES, COMMITMENTS, AND MIX CHART**

SCALE: NA SHEET 1 OF 1 SHEETS STA. TO STA.

F.A.P. RTE.	SECTION	COUNTY	TOTAL SHEETS	SHEET NO.
312	72R5-4	RANDOLPH	6	2
CONTRACT NO. 76L19				
			ILLINOIS	FED. AID PROJECT

CODE NO.	ITEM	UNIT	80% FED 20% STATE	
			TOTAL QUANTITY	ROADWAY
				0005
				RURAL
40600290	BITUMINOUS MATERIALS (TACK COAT)	POUND	26896	26896
40600637	LEVELING BINDER (MACHINE METHOD), 1L-9.5FG, N70	TON	2789	2789
40600990	TEMPORARY RAMP	SQ YD	56	56
40603315	HOT-MIX ASPHALT SURFACE COURSE, MIX "C", N70	TON	3347	3347
44000160	HOT-MIX ASPHALT SURFACE REMOVAL, 2 3/4"	SQ YD	39846	39846
44300200	STRIP REFLECTIVE CRACK CONTROL TREATMENT	FOOT	59770	59770
48102100	AGGREGATE WEDGE SHOULDER, TYPE B	TON	837	837
67100100	MOBILIZATION	L SUM	1	1
70100450	TRAFFIC CONTROL AND PROTECTION, STANDARD 701201	L SUM	1	1
70100460	TRAFFIC CONTROL AND PROTECTION, STANDARD 701306	L SUM	1	1
70100600	TRAFFIC CONTROL AND PROTECTION, STANDARD 701336	L SUM	1	1
70300100	SHORT TERM PAVEMENT MARKING	FOOT	4483	4483
70300150	SHORT TERM PAVEMENT MARKING REMOVAL	SQ FT	498	498
70300220	TEMPORARY PAVEMENT MARKING - LINE 4"	FOOT	46134	46134

MODEL: Default
 FILE: \\nrcs-pix\pub\room\dat\illinois.gov\PIWDOT\Documents\DOT_Offices\District 8\Projects\076119\CADD\Drawings\CAD\Sheets\076119-ph-500.dgn

USER NAME = challandeske	DESIGNED -	REVISED -
	DRAWN -	REVISED -
PLOT SCALE = 100,0000' / in.	CHECKED -	REVISED -
PLOT DATE = 5/31/2019	DATE -	REVISED -

**STATE OF ILLINOIS
DEPARTMENT OF TRANSPORTATION**

SUMMARY OF QUANTITIES

SCALE: SHEET OF SHEETS STA. TO STA.

F.A.P. RTE.	SECTION	COUNTY	TOTAL SHEETS	SHEET NO.
312	72R5-4	RANDOLPH	6	3
			CONTRACT NO. 76L19	
		ILLINOIS	FED. AID PROJECT	

MODEL: Default
 FILE NAME: P:\p\planroom.dwg
 ILLINOIS.GOV:PWIDOT\Documents\DOT_Offices\District 8\Projects\0761.19\CADDData\CAD\Sheets\0761.19-ph-500.dgn

CODE NO.	ITEM	UNIT	80% FED 20% STATE	
			TOTAL QUANTITY	ROADWAY
				0005 RURAL
78000200	THERMOPLASTIC PAVEMENT MARKING - LINE 4"	FOOT	46134	46134
78100100	RAISED REFLECTIVE PAVEMENT MARKER	EACH	187	187
78300200	RAISED REFLECTIVE PAVEMENT MARKER REMOVAL	EACH	187	187
X7030005	TEMPORARY PAVEMENT MARKING REMOVAL	SQ FT	15378	15378
Z0033700	LONGITUDINAL JOINT SEALANT	FOOT	14942	14942
Z0034105	MATERIAL TRANSFER DEVICE	TON	6136	6136
44200208	PAVEMENT PATCHING, TYPE II, 18 INCH	SQ YD	172	172
44200209	PAVEMENT PATCHING, TYPE III, 18 INCH	SQ YD	161	161
44200211	PAVEMENT PATCHING, TYPE IV, 18 INCH	SQ YD	337	337
∅ Z0076600	TRAINEES	HOUR	500	500
∅ Z0076604	TRAINEES TRAINING PROGRAM GRADUATE	HOUR	500	500

∅ 0042

REV. - MS

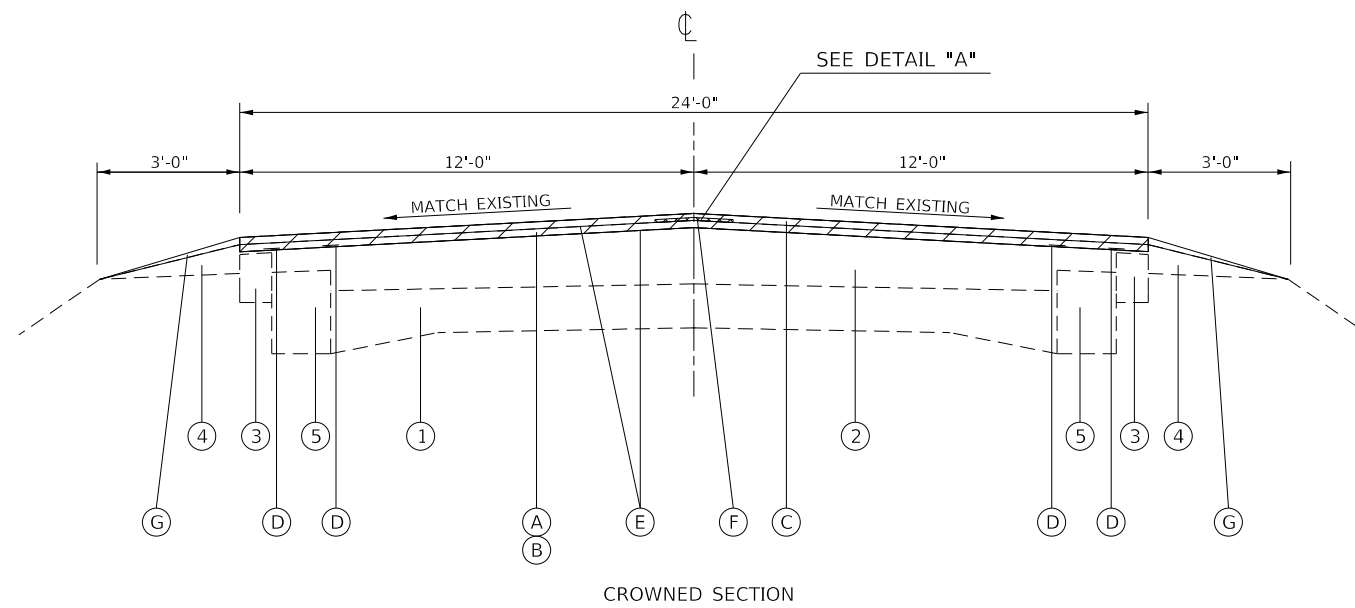
USER NAME = challandeske	DESIGNED -	REVISED -
PLOT SCALE = 100.0000' / in.	DRAWN -	REVISIED -
PLOT DATE = 5/31/2019	CHECKED -	REVISIED -
	DATE -	REVISIED -

**STATE OF ILLINOIS
 DEPARTMENT OF TRANSPORTATION**

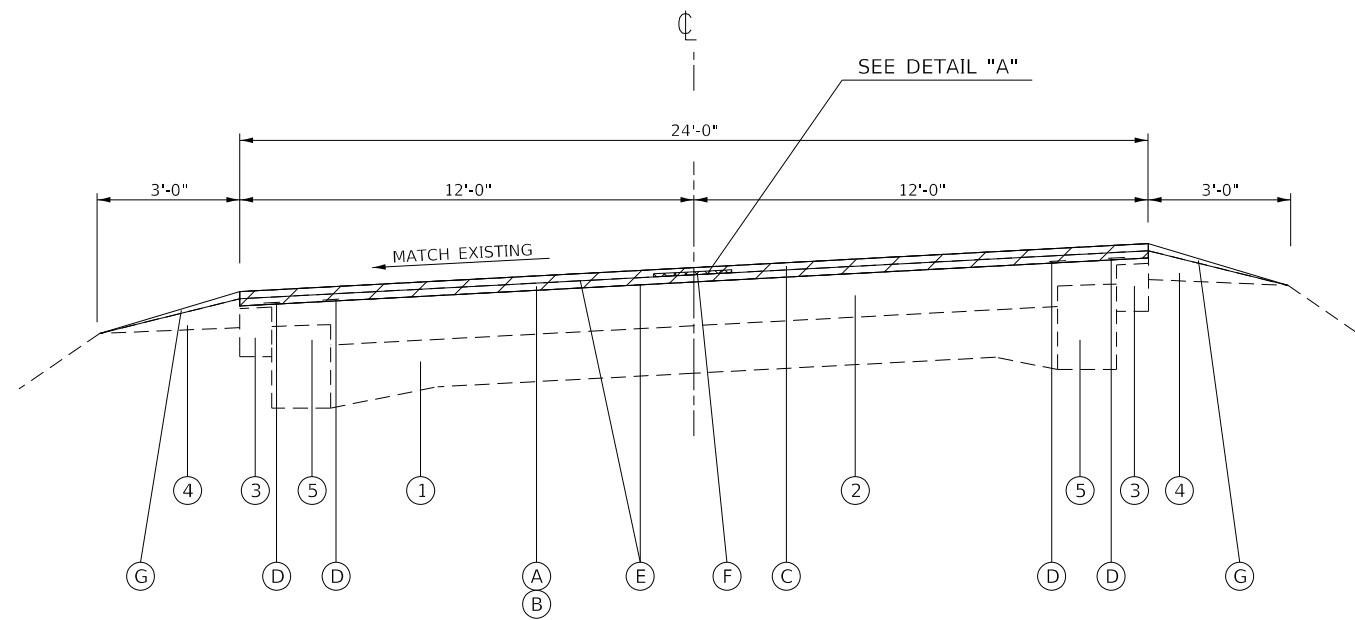
SUMMARY OF QUANTITIES

SCALE: SHEET OF SHEETS STA. TO STA.

F.A.P. RTE.	SECTION	COUNTY	TOTAL SHEETS	SHEET NO.
312	72R5-4	RANDOLPH	6	4
CONTRACT NO. 76L19				
ILLINOIS FED. AID PROJECT				



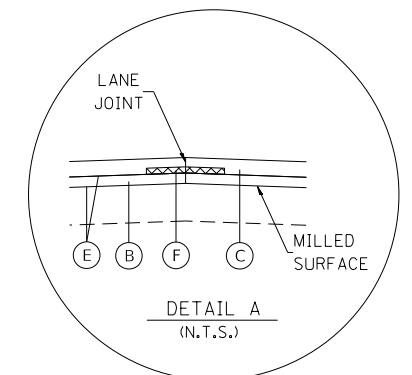
CROWNED SECTION



SUPER ELEVATION SECTION

LEGEND

- 1 EXISTING CONCRETE PAVEMENT 9-6-9
- 2 EXISTING HOT-MIX ASPHALT OVERLAY ± 9"
- 3 EXISTING HOT-MIX ASPHALT SHOULDERS - 6½"
- 4 EXISTING AGGREGATE SHOULDERS, TYPE B
- 5 EXISTING BASE COURSE WIDENING - 8"
- A PROPOSED HOT-MIX ASPHALT SURFACE REMOVAL 2¾"
- B PROPOSED HOT-MIX ASPHALT LEVELING BINDER (MACHINE METHOD) IL-9.5FG, N70 1¼"
- C PROPOSED HOT-MIX ASPHALT SURFACE COURSE MIX "C", N70, 1½"
- D PROPOSED STRIP REFLECTIVE CRACK CONTROL
- E PROPOSED BITUMINOUS MATERIALS (TACK COAT)
- F PROPOSED LONGITUDINAL JOINT SEALANT
- G PROPOSED AGGREGATE WEDGE



••DETAIL "A" SHALL BE APPLIED ALONG THE CENTERLINE OF PAVEMENT

MODEL: Default
 FILE: \\nashc-pix\pub\harron\m.d\at\illinois.gov\PWIDOT\Documents\DOT_Offices\District_8\Projects\08761_19\shc\typical.dgn

USER NAME = challeske	DESIGNED -	REVISED -
	DRAWN -	REVISED -
PLOT SCALE = 100.0000' / in.	CHECKED -	REVISED -
PLOT DATE = 5/29/2019	DATE -	REVISED -

**STATE OF ILLINOIS
DEPARTMENT OF TRANSPORTATION**

TYPICAL SECTION

SCALE: NA SHEET 1 OF 1 SHEETS STA. TO STA.

F.A.P. RTE.	SECTION	COUNTY	TOTAL SHEETS	SHEET NO.
312	72R5-4	RANDOLPH	6	5
ILLINOIS FED. AID PROJECT			CONTRACT NO. 76L19	

PAVEMENT MARKING SCHEDULE										
MP	TO	MP	COMMENTS	THERMOPLASTIC PAVEMENT MARKING LINE - 4"		TEMPORARY PAVEMENT MARKING LINE - 4"		TEMPORARY PAVEMENT MARKING	SHORT TERM PAVEMENT MARKING	SHORT TERM PAVEMENT MARKING
				CENTERLINE	EDGELINE	CENTERLINE	EDGELINE	REMOVAL	REMOVAL	REMOVAL
				FOOT	FOOT	FOOT	FOOT	SQ FT	FOOT	SQ FT
0.00	TO	0.10	NO PASSING BOTH	1056	1056	1056	1056	704.0	158.4	17.6
0.10	TO	0.48	NO PASSING NORTH BOUND	2508	4012.8	2508	4012.8	2173.6	601.92	66.9
0.48	TO	0.49	PASSING	13.2	105.6	13.2	105.6	39.6	15.84	1.8
0.49	TO	0.66	NO PASSING SOUTH BOUND	1122	1795.2	1122	1795.2	972.4	269.28	29.9
0.66	TO	0.70	PASSING	52.8	422.4	52.8	422.4	158.4	63.36	7.0
0.70	TO	0.85	NO PASSING NORTH BOUND	990	1584	990	1584	858.0	237.6	26.4
0.85	TO	0.90	PASSING	66	528	66	528	198.0	79.2	8.8
0.90	TO	1.03	NO PASSING SOUTH BOUND	858	1372.8	858	1372.8	743.6	205.92	22.9
1.03	TO	1.13	PASSING	132	1056	132	1056	396.0	158.4	17.6
1.13	TO	1.22	NO PASSING NORTH BOUND	594	950.4	594	950.4	514.8	142.56	15.8
1.22	TO	1.25	NO PASSING BOTH	316.8	316.8	316.8	316.8	211.2	47.52	5.3
1.25	TO	1.37	NO PASSING SOUTH BOUND	792	1267.2	792	1267.2	686.4	190.08	21.1
1.37	TO	1.44	PASSING	92.4	739.2	92.4	739.2	277.2	110.88	12.3
1.44	TO	1.53	NO PASSING NORTH BOUND	594	950.4	594	950.4	514.8	142.56	15.8
1.53	TO	1.58	NO PASSING BOTH	528	528	528	528	352.0	79.2	8.8
1.58	TO	1.68	NO PASSING SOUTH BOUND	660	1056	660	1056	572.0	158.4	17.6
1.68	TO	1.89	PASSING	277.2	2217.6	277.2	2217.6	831.6	332.64	37.0
1.89	TO	2.06	NO PASSING NORTH BOUND	1122	1795.2	1122	1795.2	972.4	269.28	29.9
2.06	TO	2.17	PASSING	145.2	1161.6	145.2	1161.6	435.6	174.24	19.4
2.17	TO	2.37	NO PASSING SOUTH BOUND	1320	2112	1320	2112	1144.0	316.8	35.2
2.37	TO	2.51	NO PASSING BOTH	1478.4	1478.4	1478.4	1478.4	985.6	221.76	24.6
2.51	TO	2.72	NO PASSING NORTH BOUND	1386	2217.6	1386	2217.6	1201.2	332.64	37.0
2.72	TO	2.83	PASSING	145.2	1161.6	145.2	1161.6	435.6	174.24	19.4
SUBTOTAL				16249	29885	16249	29885	15378.0	4483	498.1
TOTAL				46134		46134		15378	4483	498

TEMPORARY RAMP SCHEDULE			
LOCATION	WIDTH	LENGTH	SQ YD
BEGIN PROJECT	24	9	5.5
LUCY ANN DRIVE	40	5	5.1
1ST ROAD	50	5	6.4
PONTIAC LANE	50	5	6.4
MARIGOLD ROAD	50	5	6.4
SCHERLE LANE	75	5	9.5
SOUTH PRAIRIE LANE	90	5	11.5
END PROJECT	24	9	5.5
TOTAL			56

PAVING SCHEDULE											
MP	TO	MP	COMMENTS	HMA SURFACE	HOT-MIX ASPHALT SURFACE COURSE	BITUMINOUS MATERIALS	LEVELING BINDER	LONGITUDINAL	MATERIAL	AGGREGATE	STRIP REFLECTIVE
				REMOVAL 2.75"	MIX "C", N70	(TACK COAT)	(MACHINE METHOD), IL-9.5FG, N70	SEALANT	TRANSFER DEVICE	WEDGE SHOULDER TYPE B	CRACK CONTROL TREATMENT
				SQ YD	TON	POUND	TON	FOOT	TON	TON	FOOT
0.00	TO	0.10		1408.0	118.3	950.4	98.6	528.0	216.8	29.6	2112
0.10	TO	0.48		5350.4	449.4	3611.5	374.5	2006.4	824.0	112.4	8025.6
0.48	TO	0.49		140.8	11.8	95.0	9.9	52.8	21.7	3.0	211.2
0.49	TO	0.66		2393.6	201.1	1615.7	167.6	897.6	368.6	50.3	3590.4
0.66	TO	0.70		563.2	47.3	380.2	39.4	211.2	86.7	11.8	844.8
0.70	TO	0.85		2112.0	177.4	1425.6	147.8	792.0	325.2	44.4	3168
0.85	TO	0.90		704.0	59.1	475.2	49.3	264.0	108.4	14.8	1056
0.90	TO	1.03		1830.4	153.8	1235.5	128.1	686.4	281.9	38.4	2745.6
1.03	TO	1.13		1408.0	118.3	950.4	98.6	528.0	216.8	29.6	2112
1.13	TO	1.22		1267.2	106.4	855.4	88.7	475.2	195.1	26.6	1900.8
1.22	TO	1.25		422.4	35.5	285.1	29.6	158.4	65.0	8.9	633.6
1.25	TO	1.37		1689.6	141.9	1140.5	118.3	633.6	260.2	35.5	2534.4
1.37	TO	1.44		985.6	82.8	665.3	69.0	369.6	151.8	20.7	1478.4
1.44	TO	1.53		1267.2	106.4	855.4	88.7	475.2	195.1	26.6	1900.8
1.53	TO	1.58		704.0	59.1	475.2	49.3	264.0	108.4	14.8	1056
1.58	TO	1.68		1408.0	118.3	950.4	98.6	528.0	216.8	29.6	2112
1.68	TO	1.89		2956.8	248.4	1995.8	207.0	1108.8	455.3	62.1	4435.2
1.89	TO	2.06		2393.6	201.1	1615.7	167.6	897.6	368.6	50.3	3590.4
2.06	TO	2.17		1548.8	130.1	1045.4	108.4	580.8	238.5	32.5	2323.2
2.17	TO	2.37		2816.0	236.5	1900.8	197.1	1056.0	433.7	59.1	4224
2.37	TO	2.51		1971.2	165.6	1330.6	138.0	739.2	303.6	41.4	2956.8
2.51	TO	2.72		2956.8	248.4	1995.8	207.0	1108.8	455.3	62.1	4435.2
2.72	TO	2.83		1548.8	130.1	1045.4	108.4	580.8	238.5	32.5	2323.2
TOTAL				39846	3347	26896	2789	14942	6136	837	59770

PATCHING SCHEDULE						
0.00 IS AT SOUTH END OF PROJECT FOR PATCHING LAYOUT ONLY						
LOCATION	NB/SB	LENGTH	WIDTH	PAVEMENT PATCHING	PAVEMENT PATCHING	PAVEMENT PATCHING
MILE PT.		(FEET)	(FEET)	TYPE II, 18 INCH (SQ YD)	TYPE III, 18 INCH (SQ YD)	TYPE IV, 18 INCH (SQ YD)
0.09	NB	8	12		10.7	
0.15	NB	12	12		16.0	
0.21	NB	12	12		16.0	
0.22	NB	6	12	8.0		
0.23	NB	6	12	8.0		
0.24	NB	6	12	8.0		
0.41	NB	12	12		16.0	
1.22	NB	6	12	8.0		
1.27	NB	6	12	8.0		
1.28	NB	10	12	13.3		
1.44	NB	20	12			26.7
2.29	NB	70	12			93.3
2.41	NB	6	12	8.0		
2.68	NB	8	12	10.7		
2.68	SB	8	12	10.7		
2.41	SB	15	12		20.0	
2.32	SB	6	12	8.0		
2.30	SB	15	12		20.0	
1.28	SB	10	12	13.3		
1.27	SB	6	12	8.0		
1.09	SB	130	12			173.3
0.41	SB	15	12		20.0	
0.24	SB	6	12	8.0		
0.23	SB	6	12	8.0		
0.21	SB	12	12		16.0	
0.59	SB	12	12		16.0	
0.09	SB	8	12	10.7		
SUB TOTAL				149.3	140.0	293.3
ANTICIPATED FAILURES 15%				22.4	21.0	44.0
TOTAL				172	161	337

RAISED REFLECTIVE PAVEMENT MARKERS										
MP	TO	MP	COMMENTS	RAISED REFLECTIVE PAVEMENT MARKER	RAISED REFLECTIVE PAVEMENT MARKER					
				EACH	REMOVAL					
0.00	TO	0.10	NO PASSING BOTH	7	7					
0.10	TO	0.48	NO PASSING NORTH BOUND	25	25					
0.48	TO	0.49	PASSING	1	1					
0.49	TO	0.66	NO PASSING SOUTH BOUND	11	11					
0.66	TO	0.70	PASSING	3	3					
0.70	TO	0.85	NO PASSING NORTH BOUND	10	10					
0.85	TO	0.90	PASSING	3	3					
0.90	TO	1.03	NO PASSING SOUTH BOUND	9	9					
1.03	TO	1.13	PASSING	7	7					
1.13	TO	1.22	NO PASSING NORTH BOUND	6	6					
1.22	TO	1.25	NO PASSING BOTH	2	2					
1.25	TO	1.37	NO PASSING SOUTH BOUND	8	8					
1.37	TO	1.44	PASSING	5	5					
1.44	TO	1.53	NO PASSING NORTH BOUND	6	6					
1.53	TO	1.58	NO PASSING BOTH	3	3					
1.58	TO	1.68	NO PASSING SOUTH BOUND	7	7					
1.68	TO	1.89	PASSING	14	14					
1.89	TO	2.06	NO PASSING NORTH BOUND	11	11					
2.06	TO	2.17	PASSING	7	7					
2.17	TO	2.37	NO PASSING SOUTH BOUND	13	13					
2.37	TO	2.51	NO PASSING BOTH	9	9					
2.51	TO	2.72	NO PASSING NORTH BOUND	14	14					
2.72	TO	2.83	PASSING	7	7					
TOTAL				187	187					

MODEL: D:\default...
 FILE: ...
 PROJECT: ...
 OFFICE: ...
 DATE: 5/31/2019

USER NAME = challesdeske	DESIGNED -	REVISED -
PLOT SCALE = 100,0000' / in.	DRAWN -	REVISED -
PLOT DATE = 5/31/2019	CHECKED -	REVISED -
	DATE -	REVISED -

**STATE OF ILLINOIS
DEPARTMENT OF TRANSPORTATION**

SCHEDULES

SCALE: SHEET OF SHEETS STA. TO STA.

F.A.P. RTE.	SECTION	COUNTY	TOTAL SHEETS	SHEET NO.
312	72R5-4	RANDOLPH	6	6
CONTRACT NO. 76L19				
ILLINOIS FED. AID PROJECT				