

STATE OF ILLINOIS
DEPARTMENT OF TRANSPORTATION

F.A.P. RTE.	SECTION	COUNTY	TOTAL SHEETS	SHEET NO.
690	(15,15X)RS-4	CLINTON	7	1
ILLINOIS		CONTRACT NO. 76M64		

D-98-078-19



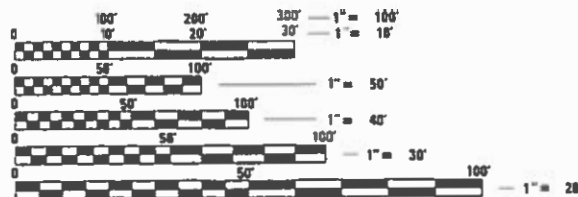
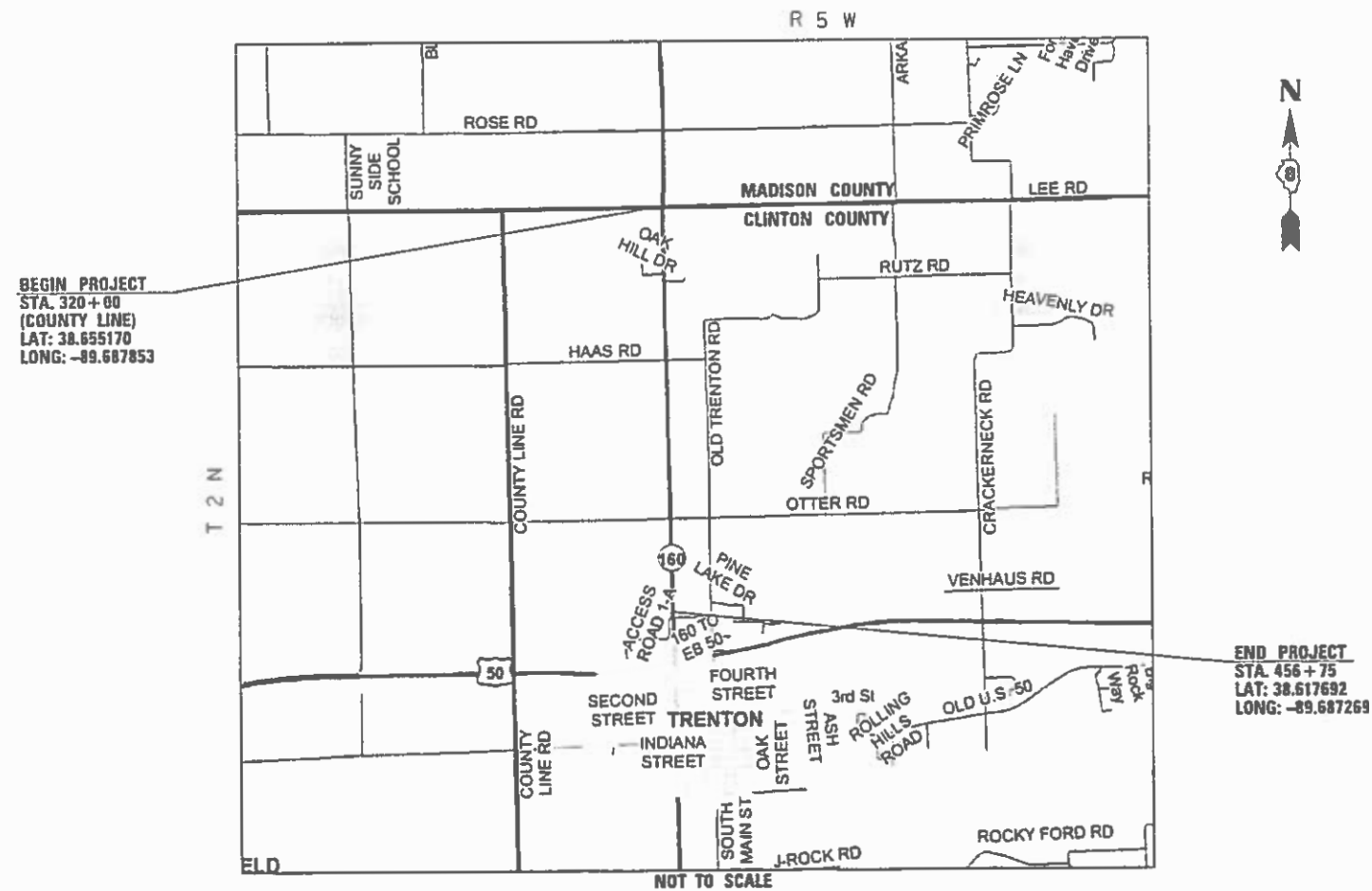
FOR INDEX OF SHEETS, SEE SHEET NO. 2

LOCATION	TRAFFIC DATA
	IL 160
2019 ADT	6000 (ACTUAL)
2029 ADT	7300 (ESTIMATED)
MU%	2.1
SU%	3.4

PROPOSED HIGHWAY PLANS

FAP ROUTE 690 (IL 160)
SECTION (15,15X)RS-4
PROJECT STP-HCVB(014)
SMART RESURFACING
CLINTON COUNTY

C-98-097-19



FULL SIZE PLANS HAVE BEEN PREPARED USING STANDARD ENGINEERING SCALES. REDUCED SIZED PLANS WILL NOT CONFORM TO STANDARD SCALES. IN MAKING MEASUREMENTS ON REDUCED PLANS, THE ABOVE SCALES MAY BE USED.

J.U.L.I.E.
JOINT UTILITY LOCATION INFORMATION FOR EXCAVATORS
1-800-892-0123
OR 811

PROJECT ENGINEER: TIM PADGETT (618) 346-3325
PROJECT MANAGER: RAHSHUN MILLER (618) 346-3196

GROSS LENGTH = 13,675 FT. = 2.59 MILE
NET LENGTH = 13,675 FT. = 2.59 MILE

CONTRACT NO. 76M64

STATE OF ILLINOIS
DEPARTMENT OF TRANSPORTATION

SUBMITTED June 3 2019
Raith Roberts
REGIONAL ENGINEER

June 14 2019
E.A. Etk
ENGINEER OF DESIGN AND ENVIRONMENT

June 14 2019
Paul P. [Signature]
DIRECTOR OF HIGHWAYS PROJECT IMPLEMENTATION 3

PRINTED BY THE AUTHORITY
OF THE STATE OF ILLINOIS

INDEX OF SHEETS

- 1 COVER SHEET
- 2 INDEX OF SHEETS, GENERAL NOTES, HIGHWAY STANDARDS, MIXTURE REQUIREMENTS & COMMITMENTS
- 3 SUMMARY OF QUANTITIES
- 4 LOCATION MAP
- 5 TYPICAL SECTIONS
- 6 SCHEDULE OF QUANTITIES
- 7 DETAIL SHEET

HIGHWAY STANDARDS

000001-07	STANDARD SYMBOLS, ABBREVIATIONS AND PATTERNS
001006	DECIMAL OF AN INCH AND OF A FOOT
420001-09	PAVEMENT JOINTS
442201-03	CLASS C AND D PATCHES
667101-02	PERMANENT SURVEY MARKERS
668001-01	U.S. GEOLOGICAL SURVEY AND NATIONAL GEODETIC SURVEY BENCHMARKS RESETTING METHOD
701001-02	OFF-ROAD OPERATIONS, 2L, 2W, MORE THAN 15' (4.5M) AWAY
701006-05	OFF-ROAD OPERATIONS, 2L, 2W, 15' (4.5M) TO 24" (600MM) AWAY FROM PAVEMENT EDGE
701011-04	OFF-ROAD OPERATIONS, DAY ONLY
701301-04	LANE CLOSURE, 2L, 2W, SHORT TIME OPERATIONS
701306-04	LANE CLOSURE, 2L, 2W, SLOW MOVING OPERATIONS DAY ONLY, FOR SPEEDS > 45 MPH
701311-03	LANE CLOSURE, 2L, 2W, MOVING OPERATIONS - DAY ONLY
701336-07	LANE CLOSURE, 2L, 2W, WORK AREAS IN SERIES, FOR SPEEDS > 45 MPH
701901-08	TRAFFIC CONTROL DEVICES
780001-05	TYPICAL PAVEMENT MARKINGS
781001-04	TYPICAL APPLICATIONS RAISED REFLECTIVE PAVEMENT MARKERS

MIXTURE REQUIREMENTS

ROUTE	FAP 690 (IL 160)
SECTION	(15,15X)RS-4
COUNTIES	CLINTON
CONTRACT	76M64

DESCRIPTION	SMART - IL 160 FROM MADISON COUNTY LINE TO 0.3 MILES NORTH OF US 50.
-------------	--

ADT (CONSTRUCTION YR):	6000
MU%	2.1
SU%	3.4
20 YR. ESAL'S:	0.97

MIXTURE USE	SURFACE	PATCHING
AC/PG	PG 64-22	PG 64-22
RAP % (MAX)	SEE SPECIAL PROVISION	SEE SPECIAL PROVISION
DESIGN AIR VOIDS	4.0% @ Ndes=70	4.0% @ Ndes=70
MIX COMPOSITION (GRADATION MIXTURE)	IL 9.5	IL 19.0
FRICTION AGG	MIXTURE "D"	MIXTURE "B"
QUALITY MGMT PROGRAM	QCP	QC/QA

PLAN QUANTITIES FOR BITUMINOUS CONCRETE SURFACE COURSE ITEMS ARE CALCULATED USING A UNIT WEIGHT OF 112 LB/SQ YD/IN (59.8 KG/SQ M/25 MM THICKNESS).

GENERAL NOTES

- ① ILLINOIS STATE LAW REQUIRES A 48-HOUR NOTICE TO BE GIVEN TO ALL UTILITIES WITHIN THE PROJECT AREA BEFORE DIGGING. FIELD MARKING OF FACILITIES MAY BE OBTAINED BY CONTACTING J.U.L.I.E. OR FOR NON-MEMBERS, THE UTILITY COMPANY DIRECTLY. AGENCIES KNOWN TO HAVE FACILITIES WITHIN THE PROJECT AREA ARE AS FOLLOWS:

UTILITY	AERIAL	BURIED
*AT&T ILLINOIS (COMMUNICATIONS)	x	x
*CHARTER COMMUNICATIONS, INC. (CABLE TV)	x	x
*CLINTON COUNTY ELECTRIC COOPERATIVE, INC.	X	x
*ENABLE MIDSTREAM PARTNERS		x
*NATURAL GAS PIPELINE COMPANY OF AMERICA		x
*CITY OF TRENTON (WATER & SANITARY SEWER)		x
*TRI-TOWN WATER DISTRICT (WATER)		x

MEMBERS OF J.U.L.I.E. CALL TOLL FREE (800) 892-0123 OR 811 AND ARE INDICATED BY *. NON-J.U.L.I.E. MEMBERS MUST BE NOTIFIED INDIVIDUALLY.

- ② THE CONTRACTOR AND THE ENGINEER SHALL BE AWARE THAT NO SURVEY WAS PERFORMED FOR THIS PROJECT. THE STATIONING, TOPOGRAPHY, AND QUANTITIES SHOWN IN THE PLANS WERE CREATED USING MICROFILM AND FIELD MEASUREMENTS. ALL SHALL BE ASSUMED TO BE APPROXIMATE. THE CONTRACTOR SHALL VERIFY DIMENSIONS AND CONDITIONS IN THE FIELD PRIOR TO CONSTRUCTION AND ORDERING OF MATERIALS.
- ③ THE LOCATIONS AND DISTANCES OF THE SURVEY MONUMENTS WILL BE AVAILABLE AT THE PRE CONSTRUCTION MEETING.
- ④ AN ESTIMATED QUANTITY OF 39506 TONS OF HOT-MIX ASPHALT SURFACE WILL BE REMOVED. THE SURFACE REMOVAL THICKNESS OF THE EXISTING HMA OVERLAY MAY VARY FROM THAT SHOWN ON THE PLANS.
- ⑤ NO OVERNIGHT LANE CLOSURES WILL BE PERMITTED.
- ⑥ THE PROPOSED PAVEMENT MARKINGS AND TEMPORARY PAVEMENT MARKINGS SHALL MATCH THE PAVEMENT MARKINGS SHEET AND CONTINUE THROUGHOUT THE JOB AND TIE INTO THE EXISTING PAVEMENT MARKINGS AT THE END OF THE PROJECT.
- ⑦ THE CONTRACTOR SHALL PROTECT ALL SURVEY MONUMENTS TO ENSURE THEY ARE VISIBLE UPON COMPLETION OF THE RESURFACING. THE PROCESS ESTABLISHED BY THE CONTRACTOR SHALL BE APPROVED BY THE RESIDENT ENGINEER PRIOR TO CONSTRUCTION AND THE COST FOR THIS WORK SHALL BE INCLUDED IN THE COST OF THE RESURFACING.
- ⑧ THE THICKNESS OF THE HMA MIXTURE SHOWN ON THE PLANS IS THE NOMINAL THICKNESS. DEVIATIONS FROM THE NOMINAL THICKNESS WILL BE PERMITTED WHEN SUCH DEVIATIONS OCCUR DUE TO IRREGULARITIES IN THE EXISTING SURFACE OR BASE ON WHICH THE HMA MIXTURE IS PLACED.
- ⑨ "ROAD CONSTRUCTION AHEAD" SIGNS SHALL BE PLACED AT THE BEGINNING OF THE PROJECT AND WILL BE INCLUDED IN THE COST OF THE ASSOCIATED TRAFFIC CONTROL PAY ITEMS. ALL CONSTRUCTION SIGNS SHALL BE 48" FLUORESCENT ORANGE.
- ⑩ A QUANTITY OF AGGREGATE WEDGE SHOULDER, TYPE B HAS BEEN INCLUDED TO ELIMINATE EXISTING DROP -OFFS AT THE EDGE OF THE HMA SHOULDER.
- ⑪ NO MTD WILL BE ALLOWED OVER S.N. 014-2002. ALSO AN EMPTIED MTD IS ALLOWED OVER CULVERT S.N. 014-2476.

COMMITMENTS

NONE

REV. - MS

USER NAME = millerraj	DESIGNED -	REVISED -
	DRAWN -	REVISED -
PLOT SCALE = 100.0000' / in.	CHECKED -	REVISED -
PLOT DATE = 5/31/2019	DATE -	REVISED -

**STATE OF ILLINOIS
DEPARTMENT OF TRANSPORTATION**

**INDEX OF SHEETS, STANDARDS
GENERAL NOTES & COMMITMENTS**

SCALE: NTS SHEET 1 OF 1 SHEETS STA. TO STA.

F.A.P. RTE.	SECTION	COUNTY	TOTAL SHEETS	SHEET NO.
690	(15,15X)RS-4	CLINTON	7	2
CONTRACT NO. 76M64				
ILLINOIS FED. AID PROJECT				

CODE NO.	ITEM	UNIT	TOTAL QUANTITY	CONSTR. CODE	
				ROADWAY	
				0005	RURAL
40600290	BITUMINOUS MATERIALS (TACK COAT)	POUND	8889	8889	
40600990	TEMPORARY RAMP	SQ YD	50.7	50.7	
40603340	HOT-MIX ASPHALT SURFACE COURSE, MIX "D", N70	TON	3318	3318	
44000155	HOT-MIX ASPHALT SURFACE REMOVAL, 1 1/2"	SQ YD	39506	39506	
44200168	PAVEMENT PATCHING, TYPE II, 14 INCH	SQ YD	48	48	
44200172	PAVEMENT PATCHING, TYPE III, 14 INCH	SQ YD	40	40	
44200174	PAVEMENT PATCHING, TYPE IV, 14 INCH	SQ YD	107	107	
48102100	AGGREGATE WEDGE SHOULDER, TYPE B	TON	532	532	
67000400	ENGINEER'S FIELD OFFICE, TYPE A	CAL MO	2	2	
67100100	MOBILIZATION	L SUM	1	1	
70100460	TRAFFIC CONTROL AND PROTECTION, STANDARD 701306	L SUM	1	1	
70100600	TRAFFIC CONTROL AND PROTECTION, STANDARD 701336	L SUM	1	1	
70300100	SHORT TERM PAVEMENT MARKING	FOOT	3730	3730	
70300150	SHORT TERM PAVEMENT MARKING REMOVAL	SQ FT	415	415	

CODE NO.	ITEM	UNIT	TOTAL QUANTITY	CONSTR. CODE	
				ROADWAY	
				0005	RURAL
70300220	TEMPORARY PAVEMENT MARKING - LINE 4"	FOOT	33105	33105	
* 78000200	THERMOPLASTIC PAVEMENT MARKING - LINE 4"	FOOT	33105	33105	
* 78100100	RAISED REFLECTIVE PAVEMENT MARKER	EACH	171	171	
78300200	RAISED REFLECTIVE PAVEMENT MARKER REMOVAL	EACH	171	171	
X7030005	TEMPORARY PAVEMENT MARKING REMOVAL	SQ FT	11035	11035	
Z0033700	LONGITUDINAL JOINT SEALANT	FOOT	13675	13675	
Z0034105	MATERIAL TRANSFER DEVICE	TON	3318	3318	
Z0070100	SURVEY MONUMENT COVER ASSEMBLY	EACH	3	3	

* SPECIALTY ITEM

MODEL: Default
 FILE: \\nlsr01\p1\h1\room\dat\illinois.gov\PIWDOT\Documents\DOT_Offices\District 9\Projects\ID76M64\CADD\Drawings\CD\Drawings\ID76M64-4-1-500.dgn

USER NAME = millerraj	DESIGNED -	REVISED -
	DRAWN -	REVISED -
PLOT SCALE = 100.0000' / in.	CHECKED -	REVISED -
PLOT DATE = 5/31/2019	DATE -	REVISED -

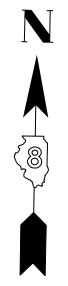
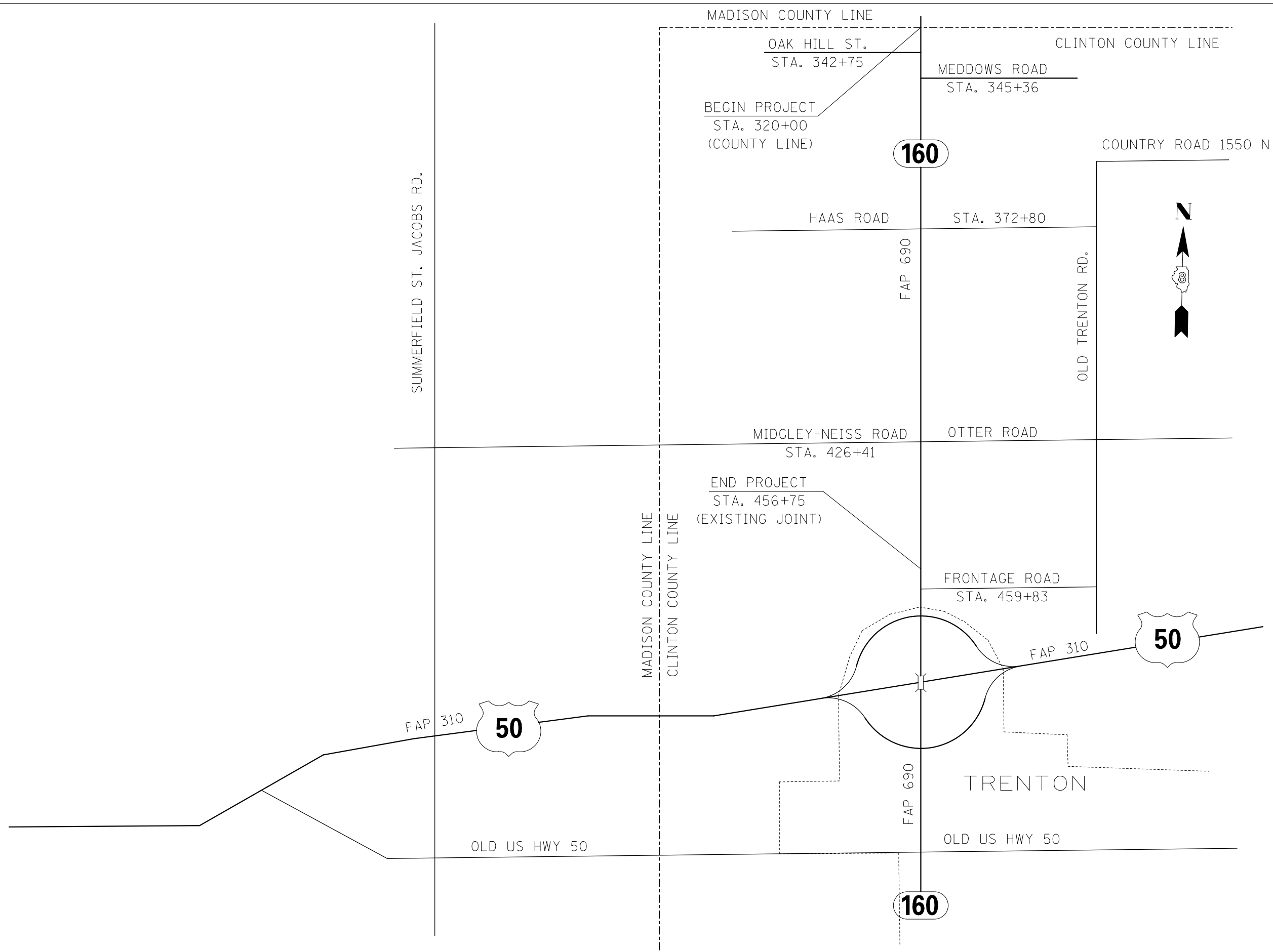
**STATE OF ILLINOIS
DEPARTMENT OF TRANSPORTATION**

SUMMARY OF QUANTITIES

SCALE: NTS SHEET 1 OF 1 SHEETS STA. TO STA.

F.A.P. RTE.	SECTION	COUNTY	TOTAL SHEETS	SHEET NO.
690	(15.15X)RS-4	CLINTON	7	3
CONTRACT NO. 76M64			ILLINOIS FED. AID PROJECT	

MODEL: Default
 FILE: \\nrcs\p\pub\room\dat\illinois.gov\PIWIDOT\Documents\DOT_Offices\District 8\Projects\ID276M64\CADD\ba\CADDsheets\ID276M64-shc-syplal.dgn

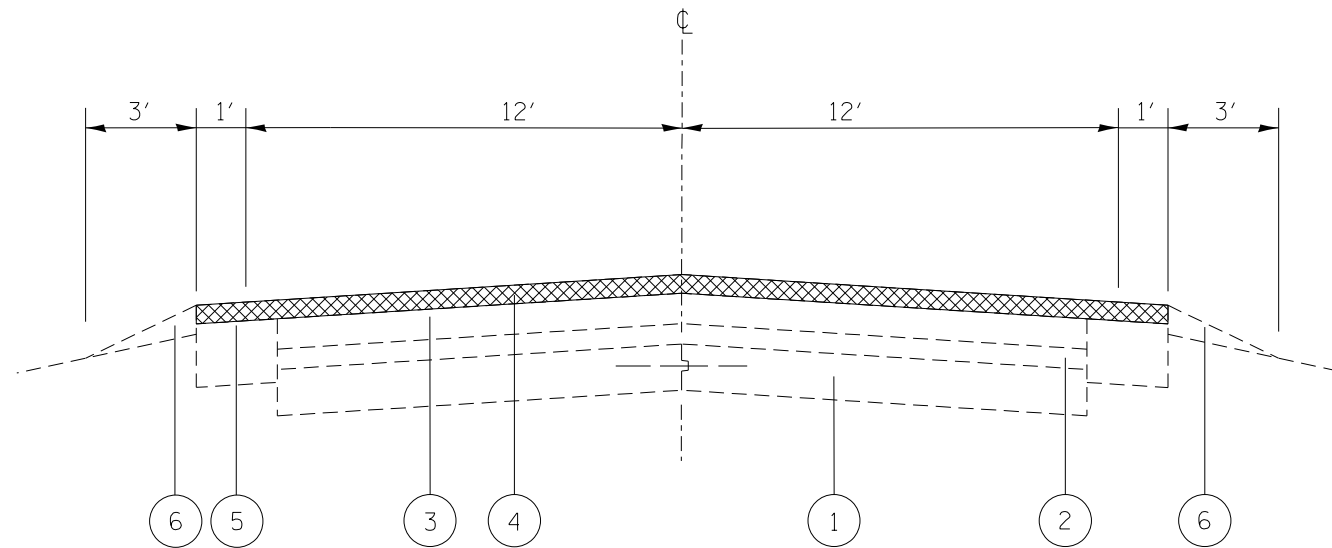


USER NAME = millerraj	DESIGNED -	REVISED -
	DRAWN -	REVISED -
PLOT SCALE = 100,0000' / in.	CHECKED -	REVISED -
PLOT DATE = 5/31/2019	DATE -	REVISED -

**STATE OF ILLINOIS
DEPARTMENT OF TRANSPORTATION**

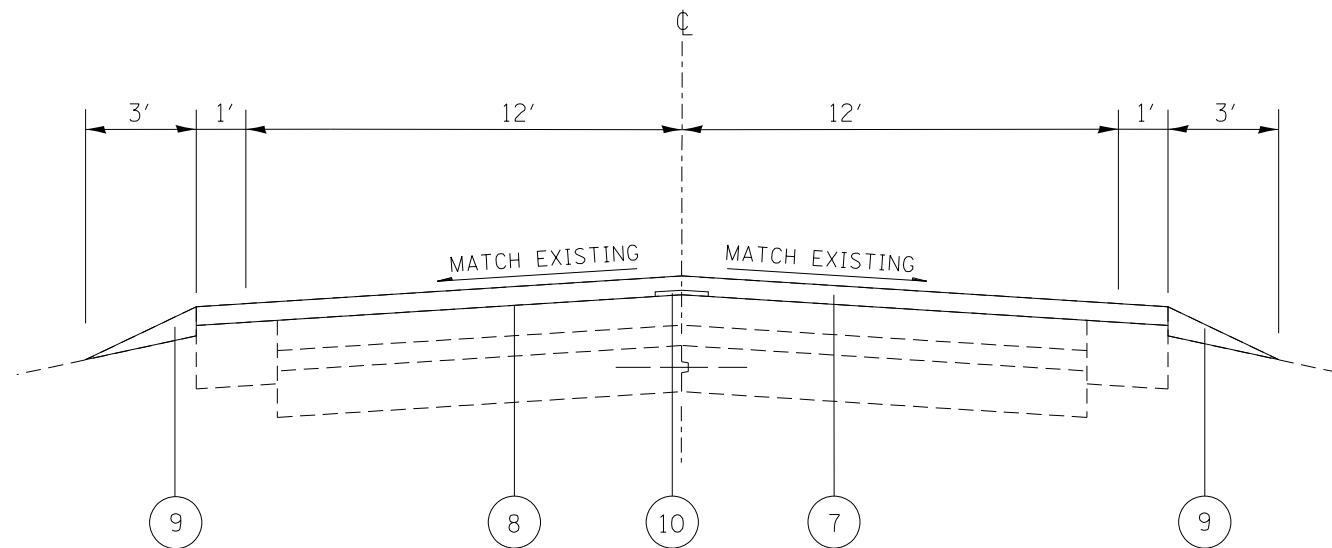
LOCATION MAP		
SCALE: NTS	SHEET 1 OF 1 SHEETS	STA. TO STA.

F.A.P. RTE.	SECTION	COUNTY	TOTAL SHEETS	SHEET NO.
690	(15.15X)RS-4	CLINTON	7	4
CONTRACT NO. 76M64				
ILLINOIS FED. AID PROJECT				



EXISTING TYPICAL SECTION

STA 320+00 TO STA. 456+75



PROPOSED TYPICAL SECTION

STA 320+00 TO STA. 456+75

LEGEND

- ① EXISTING PCC PAVEMENT 9"
- ② EXISTING LEVELING BINDER (MM)
- ③ EXISTING BITUMINOUS CONCRETE BINDER COURSE
- ④ EXISTING BITUMINOUS CONCRETE SURFACE COURSE, CLASS I
- ⑤ EXISTING SAFTEY SHOULDER 1'
- ⑥ EXISTING AGGREGATE SHOULDER, TYPE B
- ⑦ PROPOSED HOT-MIX ASPHALT SURFACE COURSE, MIX "D", N70, 1-1/2"
- ⑧ PROPOSED BITUMINOUS MATERIALS (TACK COAT)
- ⑨ PROPOSED AGGREGATE WEDGE SHOULDER, TYPE B
- ⑩ PROPOSED LONGITUDINAL JOINT SEALANT

MODEL: Default
 FILE: \\nrcs-pix\plannerroom.dta\illinois.gov\PWIDOT\Documents\DOT_Offices\District 8\Projects\IDF76M64\CADD\Drawings\CADDsheets\IDF76M64-4-shc-sypical.dgn

USER NAME = millerraj	DESIGNED -	REVISED -
	DRAWN -	REVISED -
PLOT SCALE = 100.0000' / in.	CHECKED -	REVISED -
PLOT DATE = 5/31/2019	DATE -	REVISED -

**STATE OF ILLINOIS
DEPARTMENT OF TRANSPORTATION**

TYPICAL SECTION	
SCALE: NTS	SHEET 1 OF 1 SHEETS
STA.	TO STA.

F.A.P. RTE.	SECTION	COUNTY	TOTAL SHEETS	SHEET NO.
690	(15.15X)RS-4	CLINTON	7	5
CONTRACT NO. 76M64				
		ILLINOIS	FED. AID PROJECT	

STATION	TO	STATION	THERMOPLASTIC PAVEMENT MARKING SCHEDULE				RAISED REFLECTIVE PAVEMENT MARKER		SHORT TERM PAVEMENT MARKING	SHORT TERM PAVEMENT MARKING REMOVAL	TEMPORARY PAVEMENT MARKING 4"	TEMPORARY PAVEMENT MARKING REMOVAL	
			LENGTH	4" SKIP-DASH YELLOW	4" LINE	NO PASSING 4" YELLOW LINE	TWO-WAY AMBER	REMOVAL					
					WHITE								
(FT)	(FT)	(FT)	(FT)	(EACH)	(EACH)	(FT)	(SQFT)	(FT)	(SQFT)				
320+00	TO	456+75	13675		27350			171	171		27350.0	9116.7	
320+00	TO	335+94	1594	399				435	48.3	398.5		132.8	
335+94	TO	346+08	1014	254		1014		277	30.7	1267.5		422.5	
346+08	TO	347+16	108	27				29	3.3	27.0		9.0	
347+16	TO	357+16	1000	250		1000		273	30.3	1250.0		416.7	
357+16	TO	453+53	9637	2409				2628	292.0	2409.3		803.1	
453+53	TO	456+75	322	81		322		88	9.8	402.5		134.2	
SUB TOTAL:				3418.75	27350	2336							
TOTAL:					33105			171	171	3730	415	33105	11035

PAVEMENT PATCHING 14" SCHEDULE							
STATION	SIDE	LENGTH	WIDTH	QUANTITY	TYPE II	TYPE III	TYPE IV
ROUTE IL 160							
STA. 323+38	SB	15	12	20.0		20.0	
STA. 361+76	NB	15	12	20.0		20.0	
STA. 389+85	SB	6	12	8.0	8.0		
STA. 389+85	NB	6	12	8.0	8.0		
STA. 390+65	NB	6	12	8.0	8.0		
STA. 390+65	SB	6	12	8.0	8.0		
STA. 391+28	NB	6	12	8.0	8.0		
STA. 391+28	SB	6	12	8.0	8.0		
STA. 437+69	NB	50	12	66.7			66.7
STA. 437+69	SB	30	12	40.0			40.0
TOTALS					48	40	107

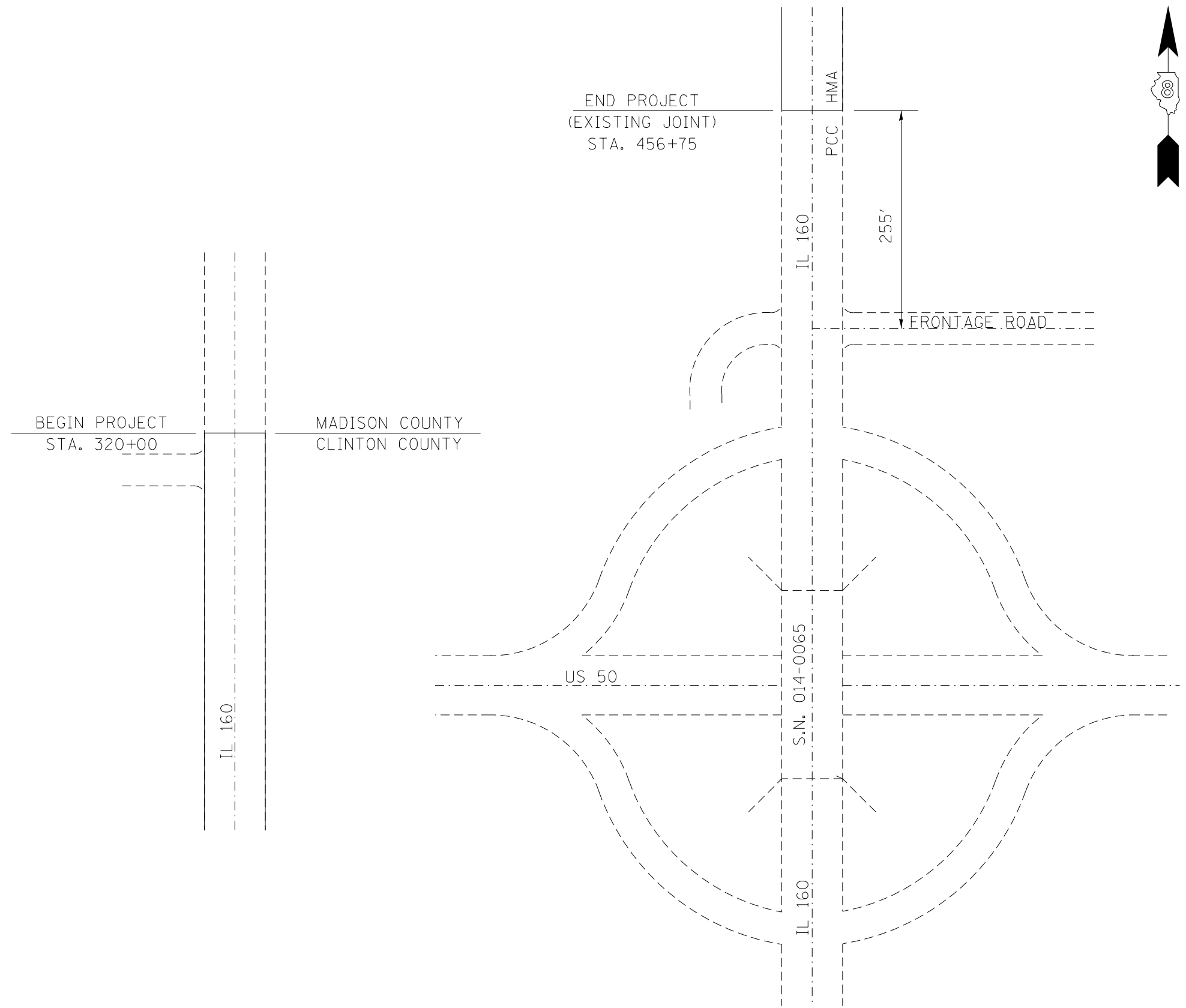
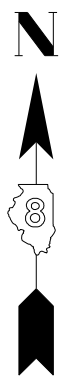
RESURFACING SCHEDULE									
STATION		DIMENSIONS		HMA SURFACE REMOVAL 1 1/2"	BITUMINOUS MATERIAL (TACK COAT)	HOT-MIX ASPHALT SURFACE COURSE, N70, IL 9.5	AGGREGATE WEDGE SHOULDER, TYPE B	LONGITUDINAL JOINT SEALANT	
		LTH	WTH						
		FOOT							SQ YDS
320+00	TO	330+00	1000	26	2889	650	242.7	38.9	1000
330+00	TO	340+00	1000	26	2889	650	242.7	38.9	1000
340+00	TO	350+00	1000	26	2889	650	242.7	38.9	1000
350+00	TO	360+00	1000	26	2889	650	242.7	38.9	1000
360+00	TO	370+00	1000	26	2889	650	242.7	38.9	1000
370+00	TO	380+00	1000	26	2889	650	242.7	38.9	1000
380+00	TO	390+00	1000	26	2889	650	242.7	38.9	1000
390+00	TO	400+00	1000	26	2889	650	242.7	38.9	1000
400+00	TO	410+00	1000	26	2889	650	242.7	38.9	1000
410+00	TO	420+00	1000	26	2889	650	242.7	38.9	1000
420+00	TO	430+00	1000	26	2889	650	242.7	38.9	1000
430+00	TO	440+00	1000	26	2889	650	242.7	38.9	1000
440+00	TO	450+00	1000	26	2889	650	242.7	38.9	1000
450+00	TO	456+75	675	26	1950	439	163.8	26.2	675
TOTAL:					39506	8889	3318	532	13675

TEMPORARY RAMP SCHEDULE		
LOCATION		TEMPORARY RAMP
STATION	DESCRIPTION	(SY)
320+00	BEGIN PROJECT	13.3
104+67	OAK HILL ST.	5.3
104+67	MEDDOWS RD.	5.3
119+05	HAAS RD	5.3
121+55	HAAS RD.	5.3
158+08	MIDGLEY-NEISS RD.	5.3
173+79	OTTER RD.	5.3
189+49	END PROJECT	5.3
TOTAL		50.7

NOTE: SIDEROAD TEMPORARY RAMPS ARE 2 FT LONG.

MODEL: Default
FILE: \\nrc\pc\pub\lhamon.dwg
PROJECT: \\nrc\pc\pub\lhamon.dwg
OFFICE: \\nrc\pc\pub\lhamon.dwg
DATE: 5/31/2019

USER NAME = millerraj	DESIGNED -	REVISED -	STATE OF ILLINOIS DEPARTMENT OF TRANSPORTATION	SCHEDULE OF QUANTITIES				F.A.P. RTE. 690	SECTION (15.15X)RS-4	COUNTY CLINTON	TOTAL SHEETS 7	SHEET NO. 6
PLOT SCALE = 100.0000' / in.	CHECKED -	REVISED -						SCALE: NTS	SHEET 1 OF 1 SHEETS	STA.	TO STA.	CONTRACT NO. 76M64
PLOT DATE = 5/31/2019	DATE -	REVISED -						ILLINOIS FED. AID PROJECT				



MODEL: Default
 FILE: Model_C:\p1\planroom.dwg
 I:\projects\DOT\Documents\DOT_Offices\Director\Projects\DOT\76M64\CADD\Drawings\DOT\76M64-4-1-1-1.dwg

USER NAME = millerraj	DESIGNED -	REVISED -
	DRAWN -	REVISED -
PLOT SCALE = 100.0000' / in.	CHECKED -	REVISED -
PLOT DATE = 5/31/2019	DATE -	REVISED -

STATE OF ILLINOIS
DEPARTMENT OF TRANSPORTATION

DETAIL SHEET			
SCALE: NTS	SHEET 1	OF 1 SHEETS	STA. TO STA.

F.A.P. RTE. 690	SECTION (15.15X)RS-4	COUNTY MADISON	TOTAL SHEETS 7	SHEET NO. 7
ILLINOIS			FED. AID PROJECT	
CONTRACT NO. 76M64				