

STATE OF ILLINOIS  
DEPARTMENT OF TRANSPORTATION

FILE	SECTION	COUNTY	TOTAL SHEETS	SHEET NO.
0	19,10RS-5	JACKSON	25	1
9733,1911		CONTRACT NO. 78565		

D-99-016-17



**PROPOSED  
HIGHWAY PLANS**

**FAUFAS ROUTE 9733/1911 (OLD US 51)  
SECTION (9,10)RS-5  
PROJECT STP-RPWR(592)  
3P RESURFACING  
JACKSON COUNTY**

C-99-016-17

FOR INDEX OF SHEETS, SEE SHEET NO. 3  
FOR SUMMARY OF QUANTITIES, SEE SHEET NO. 5

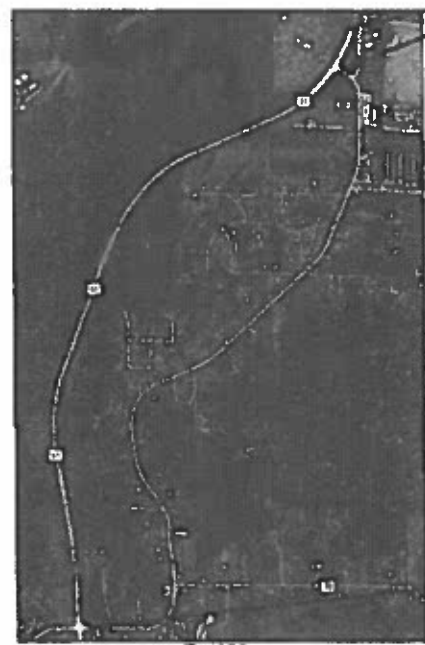
**TRAFFIC DATA**

APPROACH	ADT	% TRUCKS
OLD US 51 SPUR	530(2017)	0.0%
OLD US 51	4260(2017)	0.5%

**TOWNSHIPS**

CARBONDALE & MAKANDA

**PROJECT BEGINS**  
OLD US 51 SPUR STA. 67+20  
OLD US 51 STA. 73+04



T.9S  
T.10S

R.1W

**PROJECT ENDS**  
STA. 187+64

DESIGN DESIGNATION : N/A  
COORDINATE SYSTEM : N/A  
POSTED SPEED : 40 MPH

J.U.L.I.E.  
JOINT UTILITY LOCATION INFORMATION FOR EXCAVATION  
1-800-892-0123  
OR 811

PROJECT ENGINEER CHARLES STEIN  
PROJECT DESIGNER LISA PRITCHETT

CONTRACT NO. 78565

GROSS LENGTH = 12250.0 FT. = 2.32 MILES  
NET LENGTH = 12250.0 FT. = 2.32 MILES

STATE OF ILLINOIS  
DEPARTMENT OF TRANSPORTATION

SUBMITTED May 29 2019  
Keith Roberts  
REGION FIVE ENGINEER

June 14 2019  
Scott A. Etk  
ENGINEER OF DESIGN AND ENVIRONMENT

June 14 2019  
Paul P. Chif  
DIRECTOR OF HIGHWAYS PROJECT IMPLEMENTATION 3

**PRINTED BY THE AUTHORITY  
OF THE STATE OF ILLINOIS**

Prepared By:

[Signature]  
DISTRICT STUDIES & PLANS ENGINEER

Examined By:

[Signature]  
DISTRICT LAND ACQUISITION ENGINEER

Examined By:

[Signature]  
DISTRICT PROGRAM DEVELOPMENT ENGINEER

Examined By:

[Signature]  
DISTRICT OPERATIONS ENGINEER

Examined By:

[Signature]  
DISTRICT PROJECT IMPLEMENTATION ENGINEER

Examined By:

[Signature]  
DISTRICT CONSTRUCTION ENGINEER

Examined By:

[Signature]  
DISTRICT MATERIALS ENGINEER

FILE NAME =	USER NAME = PRITCHETLL	DESIGNED -	REVISED -
pw:\IL084EBIDINTEG.illinois.gov\PI00T\Documents\IDOT Offices\District 9\Projects\78565\DRAWN\CABsheets\78565_sht.dgn		DRAWN	REVISED
*MODELNAME*	PLOT SCALE = 100.0000 / in.	CHECKED -	REVISED -
	PLOT DATE = 3/3/2017	DATE -	REVISED -

STATE OF ILLINOIS  
DEPARTMENT OF TRANSPORTATION

SIGNATURE SHEET  
SCALE: \_\_\_\_\_ SHEET \_\_\_\_ OF \_\_\_\_ SHEETS STA. \_\_\_\_\_ TO STA. \_\_\_\_\_

* 9733.1911		F.A.U.S. RTE.	SECTION	COUNTY	TOTAL SHEETS	SHEET NO.
			(9,10)RS-5	JACKSON	22	2
					CONTRACT NO. 78565	
ILLINOIS FED. AID PROJECT						

# INDEX OF SHEETS

SHEET NO.	DESCRIPTION
1	COVER SHEET
2	SIGNATURE SHEET
3	INDEX OF SHEETS, STANDARDS
4	MIXTURE REQUIREMENTS, GENERAL NOTES
5 - 8	SUMMARY OF QUANTITIES
9 - 12	TYPICALS
13	PAVEMENT MARKING SCHEDULE
14	RESURFACING SCHEDULE
15 - 24	PAVEMENT MARKING PLAN SHEETS
25	DETAIL: ROUGHED GROOVE SURFACE, UNEVEN LANE SIGN, DETAIL: DETECTOR LOOP

# STANDARDS

000001-07	STANDARD SYMBOLS, ABBREVIATIONS AND PATTERNS
001001-02	AREAS OF REINFORCEMENT BARS
442101-09	CLASS B PATCHES
442201-03	CLASS C AND D PATCHES
701001-02	OFF-ROAD OPERATIONS, 2L, 2W, MORE THAN 15' AWAY
701006-05	OFF-ROAD OPERATIONS, 2L, 2W, 15' TO 24" FROM PAVEMENT EDGE
701011-04	OFF-ROAD MOVING OPERATIONS, 2L, 2W, DAY ONLY
701301-04	LANE CLOSURE, 2L, 2W, SHORT TIME OPERATIONS
701306-04	LANE CLOSURE, 2L, 2W, SLOW MOVING OPERATIONS DAY ONLY, FOR SPEEDS • 45 MPH
701311-03	LANE CLOSURE, 2L, 2W, MOVING OPERATIONS - DAY ONLY
701326-04	LANE CLOSURE, 2L, 2W, PAVEMENT WIDENING, FOR SPEEDS • 45 MPH
701336-07	LANE CLOSURE, 2L, 2W, WORK AREAS IN SERIES FOR SPEEDS • 45 MPH
701502-09	URBAN LANE CLOSURE, 2L, 2W, WITH BIDIRECTIONAL LEFT TURN LANE
701901-08	TRAFFIC CONTROL DEVICES
780001-05	TYPICAL PAVEMENT MARKINGS
781001-04	TYPICAL APPLICATIONS RAISED REFLECTIVE PAVEMENT MARKERS
886001-01	DETECTOR LOOP INSTALLATIONS
886006-01	TYPICAL LAYOUTS FOR DETECTION LOOPS

REV. - MS

FILE NAME =	USER NAME = pritchettll	DESIGNED -	REVISED -	<b>STATE OF ILLINOIS DEPARTMENT OF TRANSPORTATION</b>	<b>INDEX OF SHEETS STANDARDS</b>	• 9733,1911		F.A.U.S. RTE.	SECTION	COUNTY	TOTAL SHEETS	SHEET NO.
pw:\IL\084EBIDINTEG.illinois.gov\PWIDOT\Documents\IDOT Offices\District 9\Projects\78565\Drawings\CAD\Sheets\78565.sht.dgn	DRAWN	CHECKED -	REVISED -			•	(9,10)RS-5	JACKSON	25	3		
Default	PLOT SCALE = 100.0000' / 1in.	DATE -	REVISED -			SCALE: SHEET OF SHEETS STA. TO STA.		CONTRACT NO. 78565		(ILLINOIS) FED. AID PROJECT		
	PLOT DATE = 4/28/2017	DATE -	REVISED -									

## MIXTURE REQUIREMENTS

LOCATION(S):	HOT-MIX ASPHALT SURFACE COURSE
MIXTURE USES(S):	HOT-MIX ASPHALT SURFACE COURSE, MIX D, N70
AC/PG:	PG64-22
DESIGN AIR VOIDS:	4.0%, 70 GYRATION DESIGN
MIXTURE COMPOSITION: (GRADATION MIXTURE)	IL-9.5MM
FRICITION AGGREGATE:	D SURFACE
MIXTURE WEIGHT:	112 LBS/ SQ YD/IN
QUALITY MANAGEMENT PROGRAM:	QCP
SUBLOT SIZE:	TBD
NUMBER OF ROLLER PASSES:	N/A

LOCATION(S):	HOT-MIX ASPHALT LEVELING BINDER COURSE
MIXTURE USES(S):	HOT-MIX ASPHALT LEVELING BINDER, N70, 9.5MM FINE GRADED
AC/PG:	PG64-22
DESIGN AIR VOIDS:	4.0%, 70 GYRATION DESIGN
MIXTURE COMPOSITION:	IL-9.5MM FINE GRADED
FRICITION AGGREGATE:	NONE
MIXTURE WEIGHT:	112 LBS/SQ YD/IN
QUALITY MANAGEMENT PROGRAM:	QC/QA
SUBLOT SIZE:	TBD
NUMBER OF ROLLER PASSES:	N/A

LOCATION(S):	HOT-MIX ASPHALT SHOULDERS (TOP LIFT)
MIXTURE USES(S):	HOT-MIX ASPHALT SHOULDERS, IL-9.5L
AC/PG:	PG64-22
DESIGN AIR VOIDS:	4.0%, 30 GYRATION DESIGN
MIXTURE COMPOSITION:	IL-9.5L
FRICITION AGGREGATE:	NONE
MIXTURE WEIGHT:	112 LBS/SQ YD/IN
QUALITY MANAGEMENT PROGRAM:	QC/QA
SUBLOT SIZE:	TBD
NUMBER OF ROLLER PASSES:	N/A

LOCATION(S):	HOT-MIX ASPHALT SHOULDERS (LOWER LIFTS)
MIXTURE USES(S):	HOT-MIX ASPHALT SHOULDERS, IL-19.0L
AC/PG:	PG64-22
DESIGN AIR VOIDS:	4.0%, 30 GYRATION DESIGN
MIXTURE COMPOSITION:	IL-19.0L
FRICITION AGGREGATE:	NONE
MIXTURE WEIGHT:	112 LBS/SQ YD/IN
QUALITY MANAGEMENT PROGRAM:	QC/QA
SUBLOT SIZE:	TBD
NUMBER OF ROLLER PASSES:	N/A

## GENERAL NOTES

QUANTITIES SHOWN IN THE PLANS FOR PATCHING ARE ESTIMATES. THE ACTUAL AMOUNT OF PATCHING REQUIRED WILL BE DETERMINED BY THE ENGINEER.

FACTORS USED FOR ESTIMATING PLAN QUANTITIES ARE AS FOLLOWS AND SHALL NOT BE USED FOR THE BASIS OF FINAL QUANTITIES:

	ALL HOT MIX ASPHALT	2.016 TONS/CU.YD.
	ALL AGGREGATE	2.05 TONS/CU.YD.

THE ALGEBRAIC DIFFERENCE BETWEEN THE PAVEMENT AND SHOULDER SLOPES SHALL NOT EXCEED 10%. THE SHOULDER ON THE OUTSIDE OF SUPERELEVATED CURVES SHALL BE FLATTENED ACCORDINGLY.

THE THICKNESS OF HOT MIX ASPHALT MIXTURE SHOWN ON THE PLANS IS THE NOMINAL THICKNESS. DEVIATIONS FROM THE NOMINAL THICKNESS WILL BE PERMITTED WHEN SUCH DEVIATIONS OCCUR DUE TO IRREGULARITIES IN THE EXISTING SURFACE OR BASE ON WHICH THE HOT MIX ASPHALT MIXTURE IS PLACED.

THE QUANTITY OF SHORT TERM PAVEMENT MARKING SHOWN IN THE PLANS IS BASED ON ONE APPLICATION EACH FOR THE HMA SURFACE REMOVAL, SURFACE COURSE, AND BINDER COURSE.

ATTAINMENT OF PROPER CROWN OR SUPERELEVATION SHALL BE FULLY ACCOMPLISHED WITH THE HOT MIX ASPHALT SURFACE REMOVAL OR LEVELING BINDER, WHEN SPECIFIED.

THE CONTRACTOR SHALL STAMP STATIONING IN THE PROPOSED HOT MIX ASPHALT SURFACE AT 300 FT INTERVALS ON ALTERNATING SIDES OF THE PAVEMENT AND AS DIRECTED BY THE ENGINEER. THE STATION SYMBOL STAMPS USED SHALL BE FURNISHED BY THE CONTRACTOR. THEY SHALL BE 5<sup>3</sup>/<sub>4</sub> IN TALL, OF A DESIGN APPROVED BY THE ENGINEER, AND SHALL REMAIN THE PROPERTY OF THE CONTRACTOR.

HMA RESURFACING SHALL BE PLACED IN A SEQUENCE THAT WILL MINIMIZE THE TIME THE CENTERLINE EDGE IS EXPOSED TO TRAFFIC. WHEN AT THE END OF A DAY'S OPERATION THE EXPOSED CENTERLINE EDGE IS GREATER THAN 2,000 FT, THE CONTRACTOR SHALL BE REQUIRED TO PAVE IN THE ADJACENT LANE ON THE FOLLOWING WORK DAY. PRIOR TO WINTER SHUTDOWN, RESURFACING ON ADJACENT LANES IS TO BE BROUGHT UP TO THE SAME ELEVATION.

PRIOR TO PLACEMENT OF THE FINAL PAVEMENT MARKINGS THE RESIDENT ENGINEER SHALL CONTACT THE BUREAU OF OPERATIONS AND ARRANGE FOR INSPECTION AND APPROVAL OF THE PAVEMENT MARKING LAYOUT.

THE FURNISHING AND INSTALLATION OF THE 1<sup>5</sup>/<sub>4</sub> IN. CONDUIT WITH ITS TRENCHING AND BACKFILL FROM THE LOOP SAWCUT TO THE SPLICE POINT SHALL BE INCLUDED IN THE LOOP INSTALLATION UNLESS SHOWN OTHERWISE ON THE PLANS.

ALL DETECTOR LOOP CORNERS SHALL BE CORE DRILLED 2 IN. MINIMUM DIAMETER EXCEPT THOSE PLACED UNDER RESURFACING. THE DETECTOR LOOP CORNERS PLACED UNDER RESURFACING SHALL BE DIAGONALLY SAWCUT.

SAWED SLOTS FOR TWISTED PAIR ELECTRIC CABLES SHALL BE LARGER THAN SINGLE CONDUCTOR LOOP SLOTS.

THE LOCATION OF THE DETECTOR LOOPS AND TRAFFIC SIGNAL FOUNDATIONS, AS SHOWN ON THE PLANS, MAY BE ADJUSTED TO FIT FIELD CONDITIONS AS DIRECTED BY THE ENGINEER OF TRAFFIC OPERATIONS.

ALL DETECTOR LOOPS SHALL BE INSTALLED PRIOR TO RESURFACING.

THE CONTRACTOR SHALL NOTIFY THE ENGINEER OF TRAFFIC OPERATIONS 72 HOURS PRIOR TO THE SHUT-DOWN OR CUTTING OF EXISTING DETECTOR LOOPS.

AFTER A LIFT OF HOT MIX ASPHALT HAS BEEN PLACED, THE LANE SHALL REMAIN CLOSED TO TRAFFIC UNTIL THE NEW MAT HAS COOLED TO 150 DEGREES FAHRENHEIT.

CONTRACTOR SHALL COMPLETE ALL PATCHING PRIOR TO THE HOT-MIX ASPHALT SURFACE REMOVAL.

NO MTD CROSSING RESTRICTIONS. NO STRUCTURES WITHIN THE LIMITS OF THE PROJECT.

# SUMMARY OF QUANTITIES

COUNTY:	JACKSON
ROUTE:	FAU 9733/FAS 1911
FUNDING:	80% FED, 20% STATE
LOCATION:	RURAL
	ROADWAY
	0005

CODE NUMBER	ITEM DESCRIPTION	UNIT	QUANTITY
X0327979	PAVEMENT MARKING REMOVAL - GRINDING	SQ FT	290
X7030005	TEMPORARY PAVEMENT MARKING REMOVAL	SQ FT	18115
Z0034105	MATERIAL TRANSFER DEVICE	TON	5360
40600290	BITUMINOUS MATERIALS (TACK COAT)	POUND	37,104
40600637	LEVELING BINDER (MACHINE METHOD), IL-9.5FG, N70	TON	1,567
40600990	TEMPORARY RAMP	SQ YD	77
40603340	HOT-MIX ASPHALT SURFACE COURSE, MIX "D", N70	TON	3,793
44000155	HOT-MIX ASPHALT SURFACE REMOVAL, 1 1/2"	SQ YD	7,853
44000158	HOT-MIX ASPHALT SURFACE REMOVAL, 2 1/4"	SQ YD	37,300
44201007	CLASS B PATCHES, TYPE II, 13 INCH	SQ YD	48
44201011	CLASS B PATCHES, TYPE III, 13 INCH	SQ YD	16
44201013	CLASS B PATCHES, TYPE IV, 13 INCH	SQ YD	27

FILE NAME =	USER NAME = pritchettll	DESIGNED -	REVISED -
pw:\IL\084EBIDINTEG.illinois.gov\PIWIDOT\Documents\IDOT Offices\District 9\Projects\78565\Drawings\CAD\Sheets\78565.sht.dgn		DRAWN -	REVISED -
Default	PLOT SCALE = 100.0000' / in.	CHECKED -	REVISED -
	PLOT DATE = 4/28/2017	DATE -	REVISED -

**STATE OF ILLINOIS  
DEPARTMENT OF TRANSPORTATION**

**SUMMARY OF QUANTITIES**

SCALE:      SHEET      OF      SHEETS      STA.      TO      STA.

• 9733,1911		SECTION	COUNTY	TOTAL SHEETS	SHEET NO.
F.A.U.S. RTE.	(9,10)RS-5	JACKSON	25	5	
CONTRACT NO. 78565					
ILLINOIS FED. AID PROJECT					

# SUMMARY OF QUANTITIES - CONT

COUNTY:	JACKSON
ROUTE:	FAU 9733/FAS 1911
FUNDING:	80% FED, 20% STATE
LOCATION:	RURAL
	ROADWAY
	0005

CODE NUMBER	ITEM DESCRIPTION	UNIT	QUANTITY
44200050	WELDED WIRE REINFORCEMENT	SQ YD	43
44201299	DOWEL BARS 1 1/2"	EACH	160
44201803	CLASS D PATCHES, TYPE II, 13 INCH	SQ YD	627
44201807	CLASS D PATCHES, TYPE III, 13 INCH	SQ YD	61
44201809	CLASS D PATCHES, TYPE IV, 13 INCH	SQ YD	304
44213200	SAW CUTS	FOOT	424
44213204	TIE BARS 3/4"	EACH	20
48102100	AGGREGATE WEDGE SHOULDER, TYPE B	TON	95
48203029	HOT-MIX ASPHALT SHOULDERS, 8"	SQ YD	4,329
67100100	MOBILIZATION	LSUM	1
70100460	TRAFFIC CONTROL AND PROTECTION, STANDARD 701306	LSUM	1
70100500	TRAFFIC CONTROL AND PROTECTION, STANDARD 701326	LSUM	1

REV. - MS

# SUMMARY OF QUANTITIES - CONT

COUNTY:	JACKSON
ROUTE:	FAU 9733/FAS 1911
FUNDING:	80% FED, 20% STATE
LOCATION:	RURAL
	ROADWAY
	0005

CODE NUMBER	ITEM DESCRIPTION	UNIT	QUANTITY
70100600	TRAFFIC CONTROL AND PROTECTION, STANDARD 701336	LSUM	1
70102622	TRAFFIC CONTROL AND PROTECTION, STANDARD 701502	LSUM	1
70300100	SHORT TERM PAVEMENT MARKING	FOOT	3396
70300150	SHORT TERM PAVEMENT MARKING REMOVAL	SQ FT	1132
70300210	TEMPORARY PAVEMENT MARKING LETTERS AND SYMBOLS	SQ FT	850
70300220	TEMPORARY PAVEMENT MARKING - LINE 4"	FOOT	49812
70300260	TEMPORARY PAVEMENT MARKING - LINE 12"	FOOT	549
70300280	TEMPORARY PAVEMENT MARKING - LINE 24"	FOOT	56
* 78001100	PAINT PAVEMENT MARKING - LETTERS AND SYMBOLS	SQ FT	766
* 78001110	PAINT PAVEMENT MARKING - LINE 4"	FOOT	49413
* 78001150	PAINT PAVEMENT MARKING - LINE 12"	FOOT	549
* 78001180	PAINT PAVEMENT MARKING - LINE 24"	FOOT	32

\* SPECIALTY ITEM

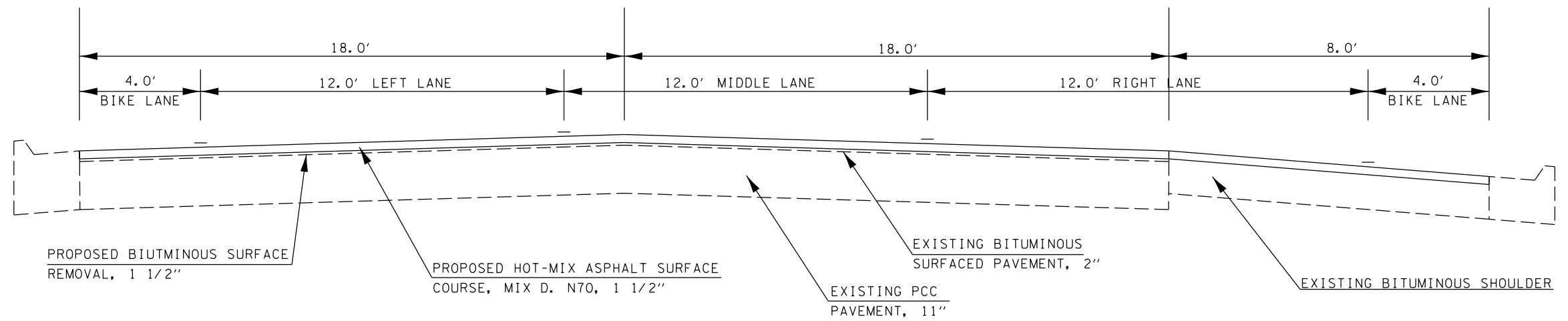
# SUMMARY OF QUANTITIES - CONT

COUNTY:	JACKSON
ROUTE:	FAU 9733/FAS 1911
FUNDING:	80% FED, 20% STATE
LOCATION:	RURAL
	ROADWAY
	0005

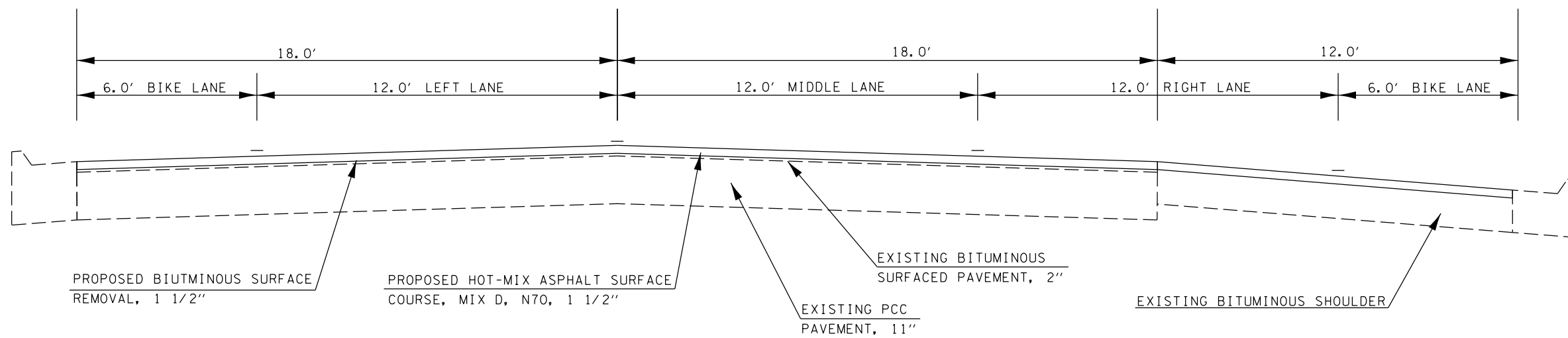
CODE NUMBER	ITEM DESCRIPTION	UNIT	QUANTITY
* 78100100	RAISED REFLECTIVE PAVEMENT MARKER	EACH	279
78300200	RAISED REFLECTIVE PAVEMENT MARKER REMOVAL	EACH	279
* 88600100	DETECTOR LOOP, TYPE I	FOOT	287

\* SPECIALTY ITEM





OLD US 51 SPUR: STA. 67+20 TO STA. 75+38  
 OLD US 51: STA. 76+71.5 TO STA. 79+37



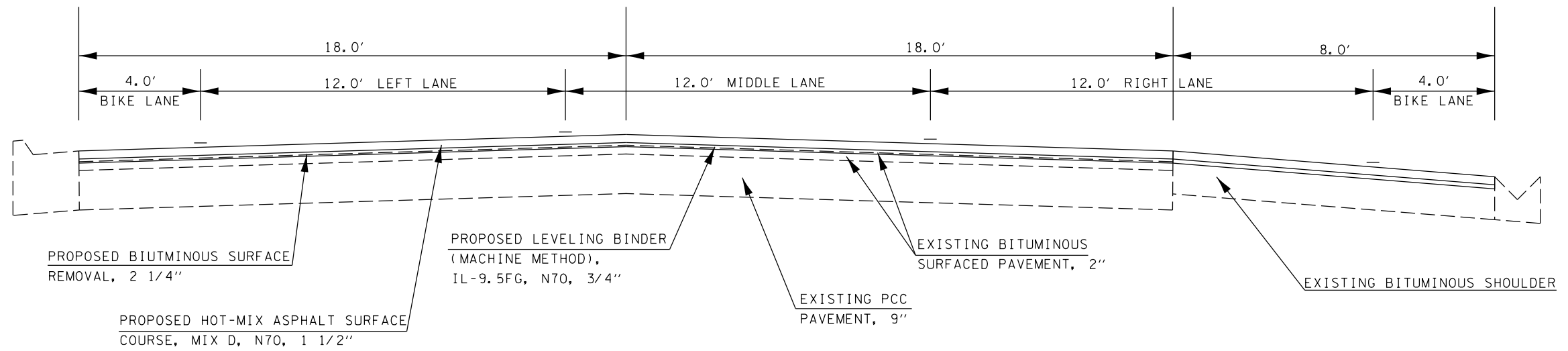
OLD US 51: STA. 73+04 TO STA. 76+71.5

FILE NAME =	USER NAME = pritchettll	DESIGNED -	REVISED -
pw:\IL\084EBIDINTEG.illinois.gov\PIWIDOT\Documents\IDOT Offices\District 9\Projects\78565\DRAWING\CAD\Sheets\78565.sht.dgn		CHECKED -	REVISED -
Default	PLOT SCALE = 100.0000' / in.	DATE -	REVISED -
	PLOT DATE = 4/28/2017		

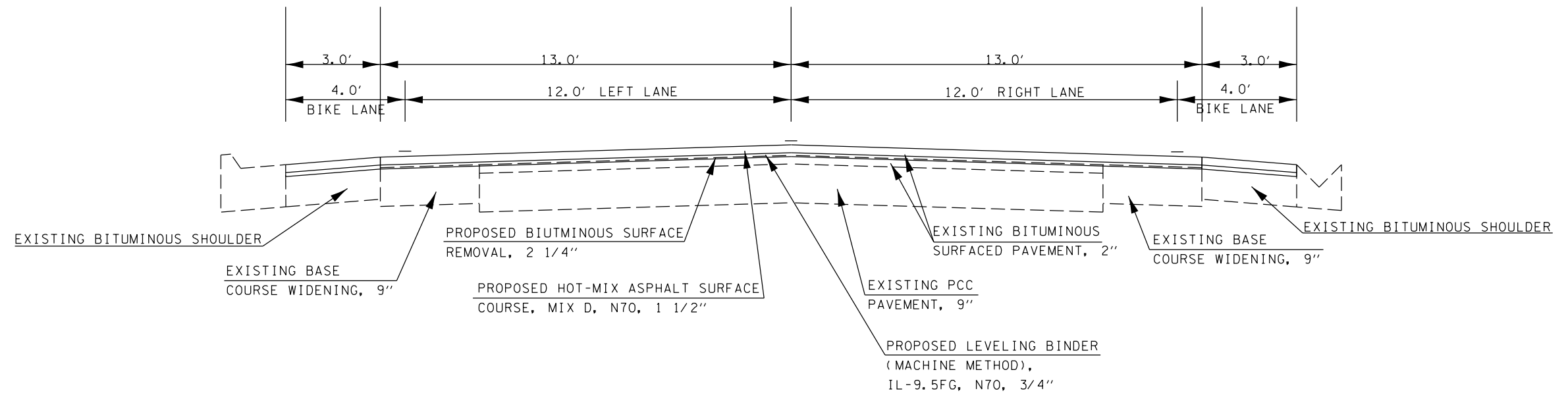
**STATE OF ILLINOIS  
 DEPARTMENT OF TRANSPORTATION**

<b>TYPICAL SECTIONS</b>			
SCALE:	SHEET	OF SHEETS	STA. TO STA.

• 9733.1911				
F.A.U.S. RTE.	SECTION	COUNTY	TOTAL SHEETS	SHEET NO.
•	(9.10)RS-5	JACKSON	25	9
CONTRACT NO. 78565				
ILLINOIS FED. AID PROJECT				



OLD US 51: STA. 79+37 TO STA. 99+00



OLD US 51: STA. 99+00 TO STA. 107+00

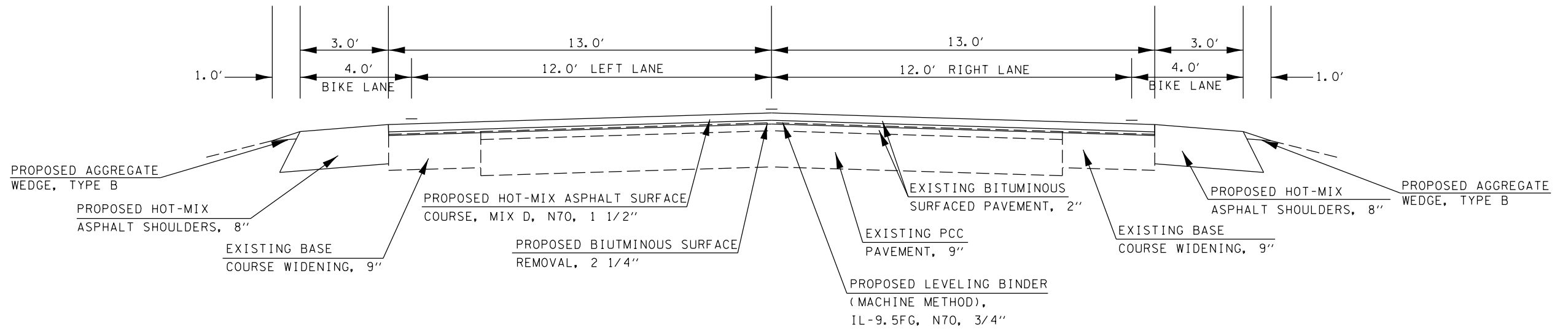
FILE NAME =	USER NAME = pritchettll	DESIGNED -	REVISED -
p:\1\084EBIDINTEG.illinois.gov\PIWIDOT\Documents\IDOT Offices\District 9\Projects\78565\Drawings\CAD\Sheets\78565.sht.dgn		DRAWN -	REVISED -
Default	PLOT SCALE = 100.0000' / in.	CHECKED -	REVISED -
	PLOT DATE = 4/28/2017	DATE -	REVISED -

STATE OF ILLINOIS  
DEPARTMENT OF TRANSPORTATION

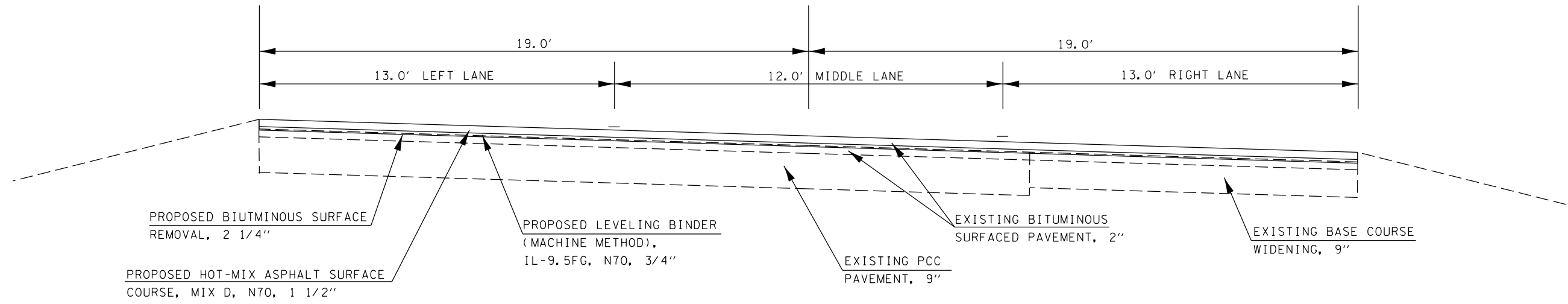
TYPICAL SECTIONS	
SCALE:	SHEET OF SHEETS STA. TO STA.

• 9733,1911

F.A.U.S. RTE.	SECTION	COUNTY	TOTAL SHEETS	SHEET NO.
•	(9,10)RS-5	JACKSON	25	10
CONTRACT NO. 78565				
ILLINOIS FED. AID PROJECT				



OLD US 51: STA. 107+00 TO STA. 170+14  
 OLD US 51: STA. 180+25 TO STA. 182+00



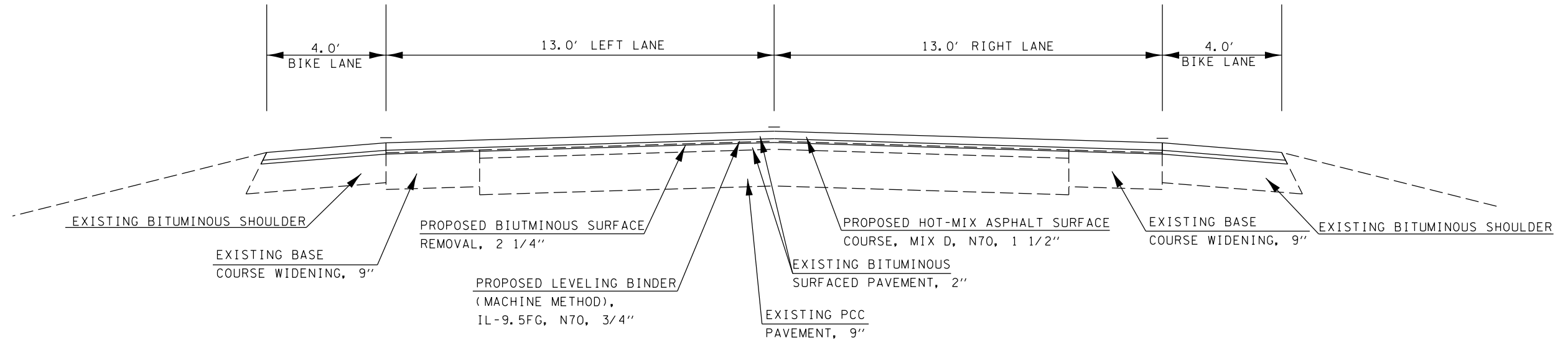
OLD US 51: STA. 170+14 TO STA. 180+25

FILE NAME =	USER NAME = pritchettll	DESIGNED -	REVISED -
p:\11\084EBIDINTEG.illinois.gov\PIWIDOT\Documents\IDOT Offices\District 9\Projects\78565\Drawings\CADsheets\78565.sht.dgn		CHECKED -	REVISED -
Default	PLOT DATE = 4/28/2017	DATE -	REVISED -

**STATE OF ILLINOIS  
 DEPARTMENT OF TRANSPORTATION**

<b>TYPICAL SECTIONS</b>			
SCALE:	SHEET	OF SHEETS	STA. TO STA.

• 9733,1911				
F.A.U.S. RTE.	SECTION	COUNTY	TOTAL SHEETS	SHEET NO.
•	(9,10)RS-5	JACKSON	25	11
			CONTRACT NO. 78565	
ILLINOIS FED. AID PROJECT				



OLD US 51: STA. 181+20 TO STA. 187+64

FILE NAME =	USER NAME = pritchettll	DESIGNED -	REVISED -
pw:\IL\084EBIDINTEG.illinois.gov\PWIDOT\Documents\IDOT Offices\District 9\Projects\78565\Drawings\CAD\Sheets\78565.sht.dgn		DRAWN -	REVISED -
Default	PLOT SCALE = 100.0000' / in.	CHECKED -	REVISED -
	PLOT DATE = 4/28/2017	DATE -	REVISED -

**STATE OF ILLINOIS  
DEPARTMENT OF TRANSPORTATION**

<b>TYPICAL SECTIONS</b>	
SCALE:	SHEET OF SHEETS STA. TO STA.

• 9733,1911		F.A.U.S. RTE.	SECTION	COUNTY	TOTAL SHEETS	SHEET NO.
		•	(9,10RS-5	JACKSON	25	12
				CONTRACT NO. 78565		
		ILLINOIS FED. AID PROJECT				

PAVEMENT MARKING SCHEDULE

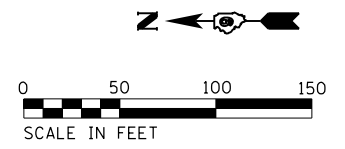
LOCATION STA TO STA	PAINT PAVEMENT MARKING						LETTERS AND SYMBOLS	SHORT TERM PAVEMENT MARKING		PAVEMENT MARKING REMOVAL - GRINDING	RAISED REFLECTIVE PAVEMENT MARKERS	COMMENTS
	LINE - 4"				LINE - 12"	LINE - 24"		YELLOW	WHITE			
	YELLOW			WHITE	YELLOW	WHITE						
	SKIP DASH	SOLID	DOUBLE SOLID	SOLID				FOOT	FOOT			
<b>OLD US 51 SPUR</b>												
STA 67+20. TO STA 73+10.	300	1180		1180				120			16	
LT STA 67+30.							9					BIKE SYMBOL
STA 67+75.							31					DOUBLE TURN ARROWS
STA 72+50							31					DOUBLE TURN ARROWS
STA 73+10. TO STA 73+94.			336	168	40			24			6	TRANSITION TO TURN LANE, HATCHING
LT STA 73+85.							9					BIKE SYMBOL
STA 73+94. TO STA 75+10.			232	232				12			6	
STA 74+10. TO STA 75+10.				100					12		3	
RT STA 74+50.							9					BIKE SYMBOL
STA 74+65.							73					2 ONLY, 1 LEFT TURN ARROW, 1 RIGHT TURN ARROW
STA 75+10.					32				128			STOP BAR
<b>US 51</b>												
RT STA 135+89. TO STA 137+11.				122							41	
<b>OLD US 51</b>												
STA 71+95.											24	STOP BAR
RT STA 71+95. TO STA 73+08.				113				12			38	
STA 72+08.								12			24	STOP BAR
STA 72+08. TO STA 73+08.		100									33	
RT STA 72+28. TO STA 73+08.				80							27	
STA 72+28.							42				42	1 LEFT TURN ARROW, 1 COMBINATION RIGHT TURN & THROUGH ARROW
STA 72+68.							42				42	1 LEFT TURN ARROW, 1 COMBINATION RIGHT TURN & THROUGH ARROW
STA 73+04.							21				21	1 ONLY
STA 73+08. TO STA 74+85.			354	354				20			8	
RT STA 73+25.							9					BIKE SYMBOL
LT STA 74+00.							9					BIKE SYMBOL
STA 74+10. TO STA 74+85.				75					8		6	
STA 74+50.							37					1 ONLY, 1 LEFT TURN ARROW
STA 74+85. TO STA 75+35.			100	50				8	8		2	
STA 75+35. TO STA 79+37.	220	804		804				88			12	
STA 79+37. TO STA 100+00.	1040	4126		4126				832			52	
STA 76+85.							31					DOUBLE TURN ARROW
STA 78+85.							31					DOUBLE TURN ARROW
STA 80+70.							31					DOUBLE TURN ARROW
STA 82+85.							31					DOUBLE TURN ARROW
STA 86+00.							49					DOUBLE TURN ARROW, 2 BIKE SYMBOLS
STA 89+00.							31					DOUBLE TURN ARROW
STA 92+00.							31					DOUBLE TURN ARROW
STA 95+00.							31					DOUBLE TURN ARROW
STA 98+00.							49					DOUBLE TURN ARROW, 2 BIKE SYMBOLS
STA 100+00. TO STA 103+85.			1540	770				160			10	TRANSITION TO TWO LANES
STA 101+00.							31					DOUBLE TURN ARROW
STA 103+85. TO STA 107+10.			650	650				144			5	
STA 107+10. TO STA 111+10.	100	400		800				80			5	
STA 111+10. TO STA 121+70.	270			2120				216			14	
STA 110+00.							18					2 BIKE SYMBOLS
STA 121+70. TO STA 127+70.	150	600		1200				120			9	
STA 122+00.							18					2 BIKE SYMBOLS
STA 127+70. TO STA 158+50.			6160	6160				616			39	
STA 134+00.							18					2 BIKE SYMBOLS
STA 146+00.							18					2 BIKE SYMBOLS
STA 158+00.							18					2 BIKE SYMBOLS
STA 158+50. TO STA 163+70.	130	520		1040				104			6	
STA 163+70. TO STA 165+85.	60			430				48			5	
STA 165+85. TO STA 166+75.	30	90		180				24			3	
STA 166+75. TO STA 168+00.			50	50				8				
STA 168+00. TO STA 173+90.				1080	257			224			28	TRANSITION TO LEFT TURN LANE
STA 169+85.							18					2 BIKE SYMBOLS
STA 173+90. TO STA 175+60.			340	510				40	40		15	LEFT TURN LANE
STA 175+00.							37					1 ONLY, 1 LEFT TURN LANE
STA 175+60. TO STA 176+15.				110								
STA 176+15. TO STA 179+50.			1340	670	252			144			18	TRANSITION FROM LEFT TURN LANE
STA 179+50. TO STA 187+64.			1628	1628				168			11	
STA 181+30.							18					2 BIKE SYMBOLS
STA 187+50.							18					2 BIKE SYMBOLS
<b>SUB-TOTAL</b>	<b>2300</b>	<b>7820</b>	<b>14890</b>	<b>24802</b>	<b>549</b>	<b>56</b>	<b>850</b>	<b>3200</b>	<b>196</b>	<b>290</b>	<b>279</b>	
<b>TOTAL</b>			<b>49812</b>		<b>549</b>	<b>56</b>	<b>850</b>	<b>3396</b>		<b>290</b>	<b>279</b>	

### RESURFACING SCHEDULE

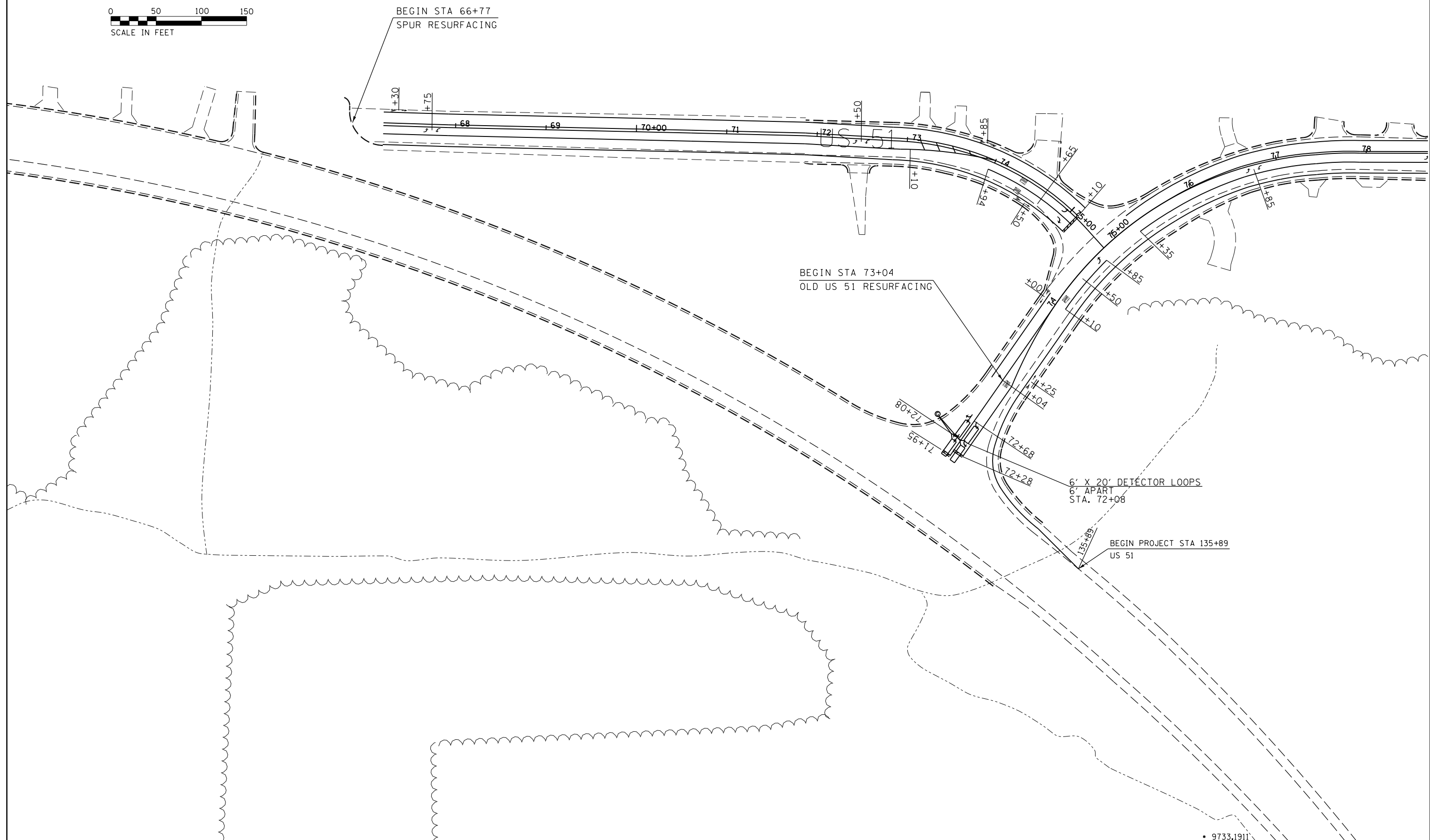
LOCATION STA TO STA	FOR INFORMATION ONLY				HOT-MIX ASPHALT SURFACE REMOVAL, 2 1/4"	HOT-MIX ASPHALT SURFACE REMOVAL, 1 1/2"	HOT-MIX ASPHALT SURFACE COURSE, MIX "D", N70	LEVELING BINDER (MACHINE METHOD), IL-9.5FG, N70	MATERIAL TRANSFER DEVICE	BITUMINOUS MATERIALS (TACK COAT)	TEMPORARY RAMP	HOT-MIX ASPHALT SHOULDERS, 8"	AGGREGATE WEDGE, TYPE B	COMMENTS
	LENGTH	WIDTH 1	WIDTH 2	EARTH EXCAVATION, 8"										
	FOOT	FOOT	FOOT	CU YD										
<b>OLD US 51 SPUR</b>														
STA 66+77.		44									12		TEMPORARY RAMP, 44' WIDE	
STA 66+77. TO STA 67+20.						161	14		14	73			1/4 CIRCLE NEAR ARNOLDS MARKET	
STA 67+20. TO STA 74+62.	742.0	44	44			3628	305		305	1632			44' WIDE PAVEMENT	
STA 74+62. TO STA 75+38.	76.0	44	152			828	70		70	372			TRANSITION FROM 44' WIDE TO 152' WIDE PAVEMENT	
STA 75+38.		152									42		TEMPORARY RAMP, 152' WIDE	
<b>OLD US 51</b>														
STA 73+04.		48									13		TEMPORARY RAMP, 48' WIDE	
STA 73+04. TO STA 75+73.	269.0	48	48			1435	121		121	646			48' WIDE PAVEMENT	
STA 75+73. TO STA 76+71.5	98.5	48	44			503	42		42	227			TRANSITION FROM 48' WIDE TO 44' WIDE PAVEMENT	
STA 76+71.5 TO STA 79+37.	265.5	44	44			1298	109		109	584			44' WIDE PAVEMENT	
STA 79+37. TO STA 99+00.	1963.0	44	44			9597	806	403	1209	6478			44' WIDE PAVEMENT	
STA 100+00. TO STA 103+85.	385.0	44	32			1626	137	68	205	1097			TRANSITION FROM 44' WIDE TO 32' WIDE PAVEMENT	
STA 103+85. TO STA 105+00.	115.0	32	32			409	34	17	52	276			32' WIDE PAVEMENT, INCLUDES 3' SHOULDER ON LT AND RT SIDE	
LT STA 105+00. TO STA 107+00.	200.0	29	29	15		644	54	27	81	435		67	29' WIDE PAVEMENT, INCLUDES 3' PAVEMENT ON RT SIDE, ADD 3' SHOULDERS TO LT SIDE	
STA 107+00. TO STA 168+00.	6100.0	26	26	904		17622	1480	740	2220	11895		4067	87' 26' WIDE PAVEMENT, ADD 3' SHOULDERS TO LT AND RT SIDE	
STA 168+00. TO STA 170+14.	214.0	26	35.75	32		734	62	31	93	496		143	3' TRANSITION FROM 26' WIDE TO 36' WIDE PAVEMENT, ADD 3' SHOULDERS ON LT AND RT SIDE	
STA 170+14. TO STA 172+54.5	240.5	35.75	38			985	83	41	124	665			TRANSITION FROM 36' WIDE TO 38' WIDE PAVEMENT, NO SHOULDERS ADDED	
STA 172+54.5 TO STA 176+20.	365.5	38	38			1543	130	65	194	1042			38' WIDE PAVEMENT, NO SHOULDERS ADDED	
STA 176+20. TO STA 180+25.	405.0	38	26			1440	121	60	181	972			TRANSITION FROM 38' WIDE TO 26' WIDE PAVEMENT, NO SHOULDERS ADDED	
STA 180+25. TO STA 182+00.	175.0	26	26	26		506	42	21	64	341		117	2' 26' WIDE PAVEMENT, ADD 3' SHOULDERS TO LT AND RT SIDE	
STA 182+00. TO STA 187+64.	564.0	34	34			2131	179	89	268	1438			34' WIDE PAVEMENT, INCLUDES 4' SHOULDERS ON LT AND RT SIDE	
STA 187+64.		34									9		TEMPORARY RAMP, 34' WIDE	
<b>TOTAL</b>						<b>37237</b>	<b>7853</b>	<b>3788</b>	<b>1564</b>	<b>5351</b>	<b>28669</b>	<b>77</b>	<b>4393</b>	<b>95</b>

• 9733,1911

CONTRACT NO. 78565



ALIGNMENT SHOWN  
IS APPROXIMATE



FILE NAME =	USER NAME = pritchettll	DESIGNED -	REVISED -
pw:\IL\084EBIDINTEG.illinois.gov\PIWIDOT\Documents\IDOT Offices\District 9\Projects\78565\Drawings\CAD\Sheets\78565.sht.dgn		CHECKED -	REVISED -
Default	PLOT SCALE = 100.0000' / in.	DATE -	REVISED -
	PLOT DATE = 4/28/2017		

**STATE OF ILLINOIS  
DEPARTMENT OF TRANSPORTATION**

**PAVEMENT MARKING  
PLAN SHEETS**

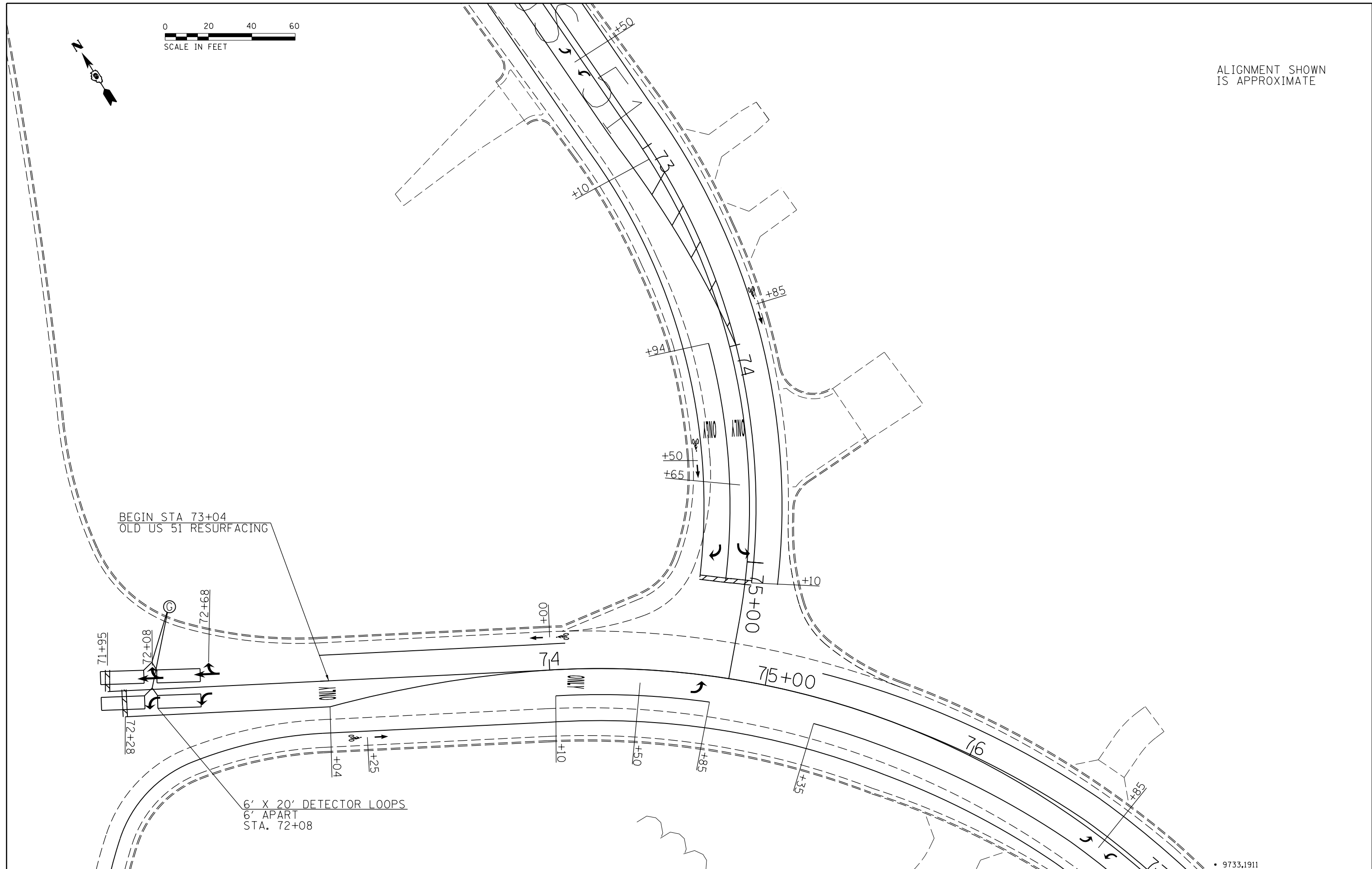
SCALE:      SHEET      OF      SHEETS      STA.      TO      STA.

F.A.U.S. RTE.	SECTION	COUNTY	TOTAL SHEETS	SHEET NO.
•	(9,10)RS-5	JACKSON	25	15
CONTRACT NO. 78565				
ILLINOIS FED. AID PROJECT				

• 9733,1911



ALIGNMENT SHOWN  
IS APPROXIMATE



FILE NAME =	USER NAME = pritchettll	DESIGNED -	REVISED -
p:\1\084EBIDINTEG.illinois.gov\PIWIDOT\Documents\IDOT Offices\District 9\Projects\78565\Drawings\CAD\Sheets\78565.sht.dgn		CHECKED -	REVISED -
Default	PLOT SCALE = 48.0000' / in.	DATE -	REVISED -
	PLOT DATE = 4/28/2017		

**STATE OF ILLINOIS  
DEPARTMENT OF TRANSPORTATION**

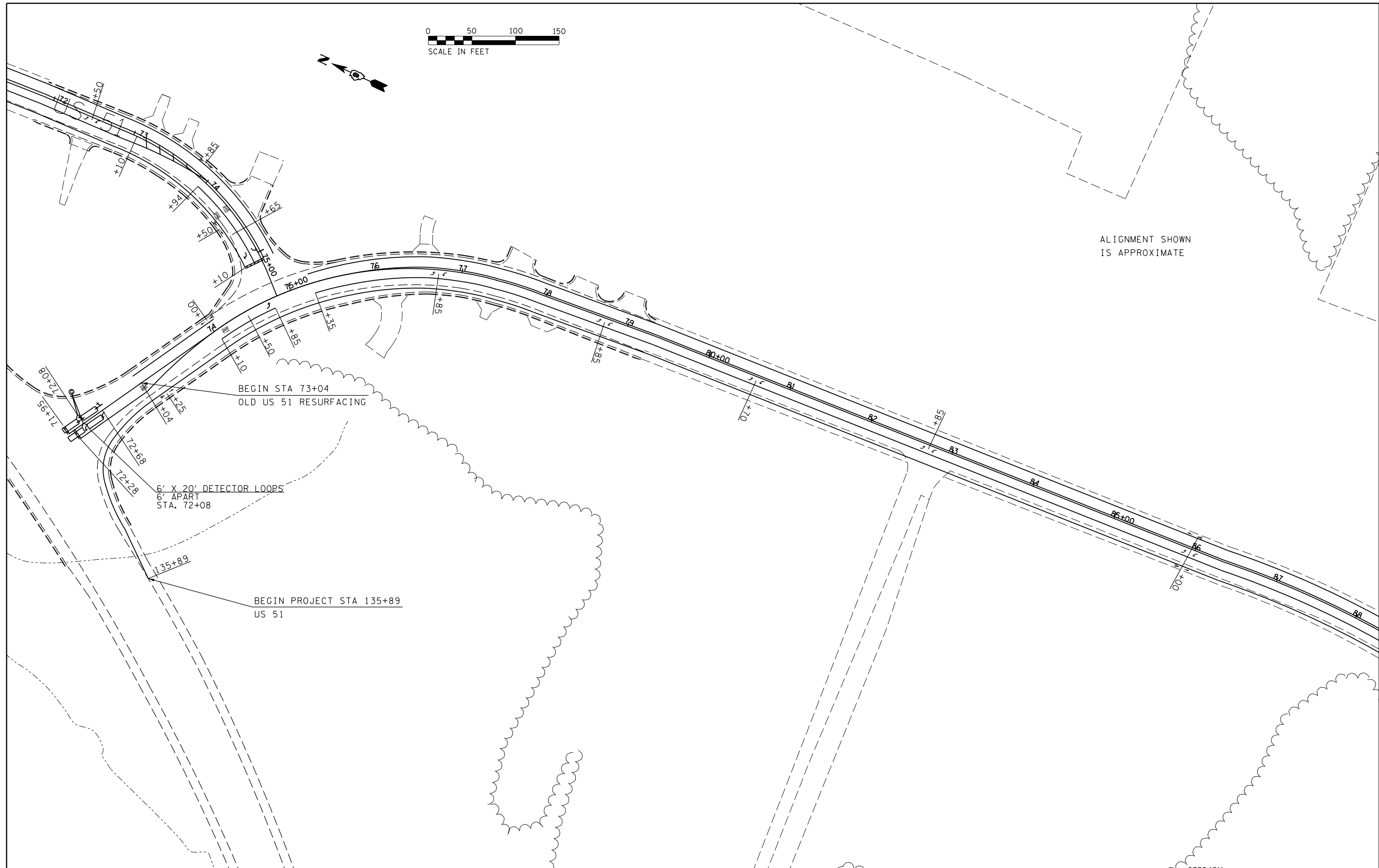
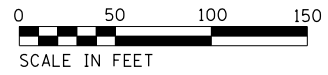
**PAVEMENT MARKING  
PLAN SHEETS**

F.A.U.S. RTE.	SECTION	COUNTY	TOTAL SHEETS	SHEET NO.
•	(9,10)RS-5	JACKSON	25	16
CONTRACT NO. 78565				
ILLINOIS FED. AID PROJECT				

SCALE: SHEET OF SHEETS STA. TO STA.

• 9733,1911





ALIGNMENT SHOWN  
IS APPROXIMATE

FILE NAME =	USER NAME = pritchettll	DESIGNED -	REVISED -
pw:\IL\084EBIDINTEG\Illinois.gov\PWIDOT\Documents\IDOT Offices\District 9\Projects\78565\Drawings\CAD\Sheets\78565.sht.dgn		DRAWN -	REVISED -
Default	PLOT SCALE = 100.0000' / in.	CHECKED -	REVISED -
	PLOT DATE = 4/28/2017	DATE -	REVISED -

**STATE OF ILLINOIS  
DEPARTMENT OF TRANSPORTATION**

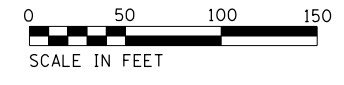
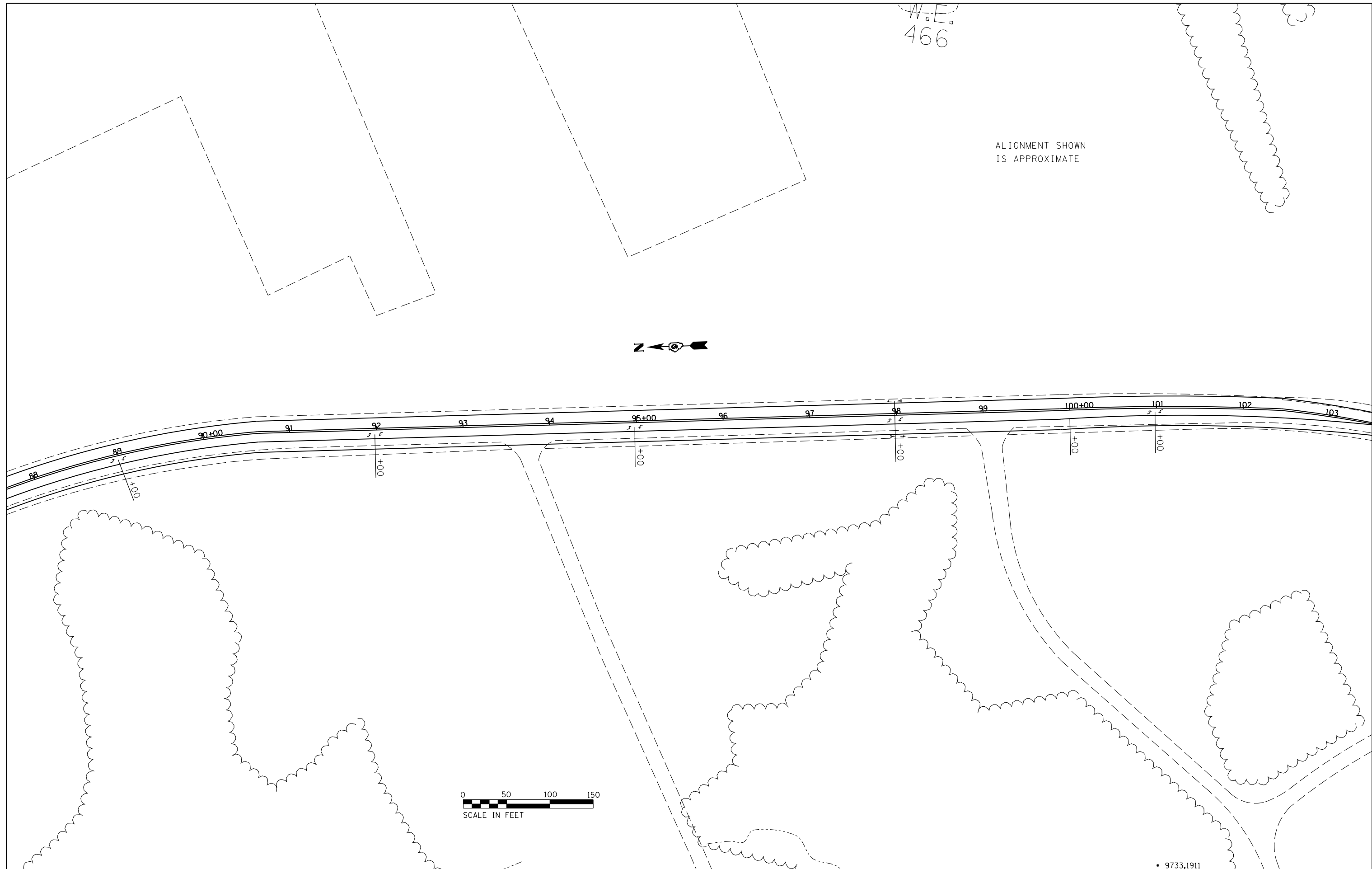
**PAVEMENT MARKING  
PLAN SHEETS**

SCALE: SHEET OF SHEETS STA. TO STA.

F.A.U.S. RTE.	SECTION	COUNTY	TOTAL SHEETS	SHEET NO.
	(9,10)RS-5	JACKSON	25	17
CONTRACT NO. 78565			9733,1911	
ILLINOIS FED. AID PROJECT				

W.E.  
466

ALIGNMENT SHOWN  
IS APPROXIMATE



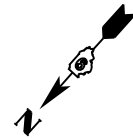
FILE NAME =	USER NAME = pritchett1	DESIGNED -	REVISED -
p:\11\084EBIDINTEG.illinois.gov\PWIDOT\Documents\IDOT Offices\District 9\Projects\78565\Drawings\CADsheets\78565.sht.dgn		CHECKED -	REVISED -
Default	PLOT DATE = 4/28/2017	DATE -	REVISED -

**STATE OF ILLINOIS  
DEPARTMENT OF TRANSPORTATION**

**PAVEMENT MARKING  
PLAN SHEETS**

SCALE: SHEET OF SHEETS STA. TO STA.

• 9733,1911	F.A.U.S. RTE.	SECTION	COUNTY	TOTAL SHEETS	SHEET NO.
	•	(9,10)RS-5	JACKSON	25	18
				CONTRACT NO. 78565	
				ILLINOIS FED. AID PROJECT	



ALIGNMENT SHOWN  
IS APPROXIMATE



FILE NAME =	USER NAME = pritchett1	DESIGNED -	REVISED -
pw:\IL\084EBIDINTEG.illinois.gov\PWIDOT\Documents\IDOT Offices\District 9\Projects\78565\Drawings\CAD\Sheets\78565.sht.dgn		DRAWN -	REVISED -
Default	PLOT SCALE = 100.0000' / in.	CHECKED -	REVISED -
	PLOT DATE = 4/28/2017	DATE -	REVISED -

**STATE OF ILLINOIS  
DEPARTMENT OF TRANSPORTATION**

**PAVEMENT MARKING  
PLAN SHEETS**

F.A.U.S. RTE.	SECTION	COUNTY	TOTAL SHEETS	SHEET NO.
•	(9,10)RS-5	JACKSON	25	19
CONTRACT NO. 78565				
ILLINOIS FED. AID PROJECT				

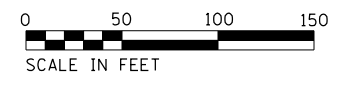
SCALE: SHEET OF SHEETS STA. TO STA.

• 9733.1911



ALIGNMENT SHOWN  
IS APPROXIMATE

W.E.  
521



FILE NAME =	USER NAME = pritchettll	DESIGNED -	REVISED -
pw:\IL\084EBIDINTEG.illinois.gov\PIWIDOT\Documents\IDOT Offices\District 9\Projects\78565\Drawings\CAD\Drawings\78565.sht.dgn		CHECKED -	REVISED -
Default	PLOT DATE = 4/28/2017	DATE -	REVISED -

**STATE OF ILLINOIS  
DEPARTMENT OF TRANSPORTATION**

**PAVEMENT MARKING  
PLAN SHEETS**

SCALE: SHEET OF SHEETS STA. TO STA.

F.A.U.S. RTE.	SECTION	COUNTY	TOTAL SHEETS	SHEET NO.
•	(9.10)RS-5	JACKSON	25	20
CONTRACT NO. 78565				
ILLINOIS FED. AID PROJECT				



ALIGNMENT SHOWN  
IS APPROXIMATE



FILE NAME =	USER NAME = pritchettll	DESIGNED -	REVISED -
pw:\IL\084EBIDINTEG.illinois.gov\PWIDOT\Documents\IDOT Offices\District 9\Projects\78565\Drawings\CAD\Sheets\78565.sht.dgn		CHECKED -	REVISED -
Default	PLOT SCALE = 100.0000' / in.	DATE -	REVISED -
	PLOT DATE = 4/28/2017		

**STATE OF ILLINOIS  
DEPARTMENT OF TRANSPORTATION**

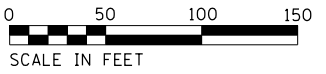
**PAVEMENT MARKING  
PLAN SHEETS**

SCALE: SHEET OF SHEETS STA. TO STA.

• 9733.1911		F.A.U.S. RTE.	SECTION	COUNTY	TOTAL SHEETS	SHEET NO.
		•	(9.10)RS-5	JACKSON	25	21
		CONTRACT NO. 78565				
ILLINOIS FED. AID PROJECT						



ALIGNMENT SHOWN  
IS APPROXIMATE



FILE NAME =	USER NAME = pritchettll	DESIGNED -	REVISED -
p:\11\084EBIDINTEG.illinois.gov\PIWIDOT\Documents\IDOT Offices\District 9\Projects\78565\Drawings\CAD\Sheets\78565.sht.dgn		CHECKED -	REVISED -
Default	PLOT SCALE = 100.0000' / in.	DATE -	REVISED -
	PLOT DATE = 4/28/2017		

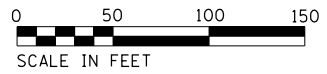
**STATE OF ILLINOIS  
DEPARTMENT OF TRANSPORTATION**

**PAVEMENT MARKING  
PLAN SHEETS**

F.A.U.S. RTE.	SECTION	COUNTY	TOTAL SHEETS	SHEET NO.
•	(9.10)RS-5	JACKSON	25	22
CONTRACT NO. 78565				
ILLINOIS FED. AID PROJECT				

SCALE: SHEET OF SHEETS STA. TO STA.

• 9733.1911



ALIGNMENT SHOWN  
IS APPROXIMATE

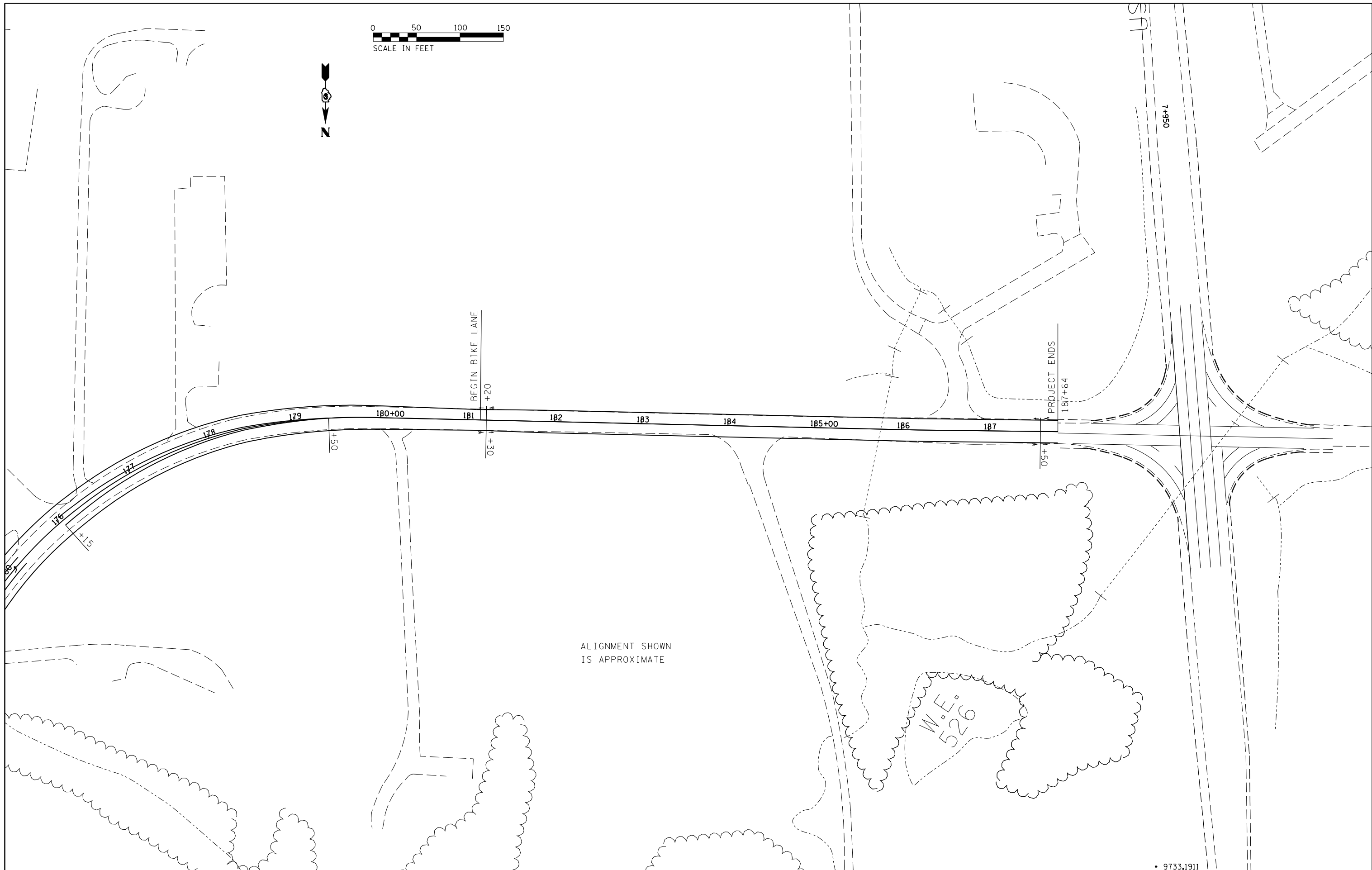
FILE NAME =	USER NAME = pritchettll	DESIGNED -	REVISED -
pw:\IL\084EBIDINTEG.illinois.gov\PIWIDOT\Documents\IDOT Offices\District 9\Projects\78565\Drawings\CADsheets\78565.sht.dgn		DRAWN -	REVISED -
Default	PLOT SCALE = 100.0000' / in.	CHECKED -	REVISED -
	PLOT DATE = 4/28/2017	DATE -	REVISED -

**STATE OF ILLINOIS  
DEPARTMENT OF TRANSPORTATION**

**PAVEMENT MARKING  
PLAN SHEETS**

SCALE: SHEET OF SHEETS STA. TO STA.

• 9733.1911	F.A.U.S. RTE.	SECTION	COUNTY	TOTAL SHEETS	SHEET NO.
		(9.10)RS-5	JACKSON	25	23
				CONTRACT NO. 78565	
				ILLINOIS FED. AID PROJECT	



ALIGNMENT SHOWN  
IS APPROXIMATE

W. L. 'S  
52°

FILE NAME =	USER NAME = pritchettll	DESIGNED -	REVISED -
pw:\IL\084EBIDINTEG.illinois.gov\PWIDOT\Documents\IDOT Offices\District 9\Projects\78565\Drawings\CAD\Sheets\78565.sht.dgn		DRAWN -	REVISED -
Default	PLOT SCALE = 100.0000' / in.	CHECKED -	REVISED -
	PLOT DATE = 4/28/2017	DATE -	REVISED -

**STATE OF ILLINOIS  
DEPARTMENT OF TRANSPORTATION**

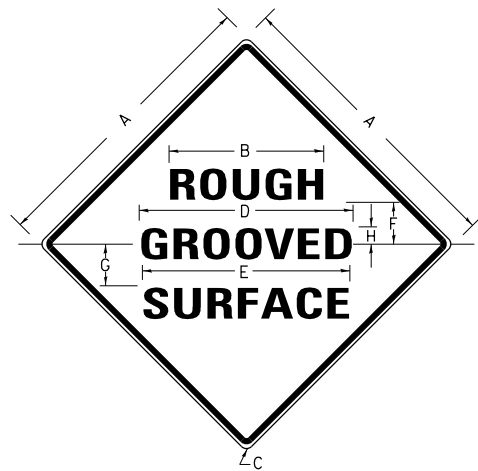
**PAVEMENT MARKING  
PLAN SHEETS**

SCALE: SHEET OF SHEETS STA. TO STA.

• 9733,1911	F.A.U.S. RTE.	SECTION	COUNTY	TOTAL SHEETS	SHEET NO.
		(9,10)RS-5	JACKSON	25	24
				CONTRACT NO. 78565	
ILLINOIS FED. AID PROJECT					



**ILLINOIS STANDARD**



**COLORS:**

LEGEND AND BORDER- BLACK NON-REFLECTORIZED  
BACKGROUND- ORANGE REFLECTORIZED

SIGN SIZE	DIMENSIONS							
	A	B	C	D	E	F	G	H
48X48	48.0	24.1	3.0	34.0	33.0	6.0	13.0	3.5

SIGN SIZE	SERIES LINES			MAR-GIN	BOR-DER	BLANK STD.
	1	2	3			
48X48	7C	7C	7C	0.8	1.2	B4-48D

ALL DIMENSIONS IN INCHES

**NOTES:**

PRIOR TO ALLOWING TRAFFIC ON ANY PORTION OF THE ROADWAY THAT HAS BEEN COLDMILLED, THE CONTRACTOR SHALL HAVE ERECTED "ROUGH GROOVED SURFACE" SIGNS THAT CONFORM TO THE ABOVE DETAILS. A MINIMUM OF ONE SIGN AT EACH END OF THE IMPROVEMENT WILL BE REQUIRED. THE CONTRACTOR SHALL MAINTAIN THE "ROUGH GROOVED SURFACE" SIGNS UNTIL THE COLDMILLED SURFACE IS COVERED WITH LEVELING BINDER OR SURFACE COURSE.

IF AT ANY TIME THE SIGNS ARE IN PLACE BUT NOT APPLICABLE, THEY SHALL BE TURNED FROM THE VIEW OF MOTORISTS OR COVERED AS DIRECTED BY THE ENGINEER.

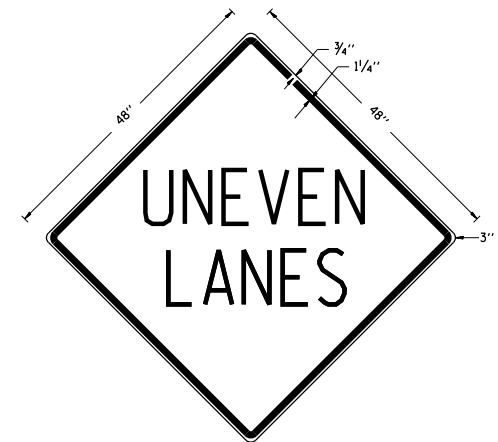
THE COST OF FURNISHING, ERECTING, MAINTAINING, AND REMOVING THE REQUIRED SIGNS SHALL BE INCLUDED IN THE CONTRACT.

STD. 9-39

REVISIONS	
REDRAWN	2-15-89
REVISED	4-6-93
REVISED	3-27-08
REVIEWED	5-17-13

**UNEVEN LANES SIGN**

W8-11 (48" x 48")



**COLORS:**

LEGEND AND BORDER - BLACK NON-REFLECTORIZED  
BACKGROUND - ORANGE REFLECTORIZED

**NOTE:** PRIOR TO ALLOWING TRAFFIC ON ANY PORTION OF THE ROADWAY THAT HAS BEEN COLDMILLED OR BEFORE RESURFACING OPERATIONS BEGIN, THE CONTRACTOR SHALL HAVE ERECTED "UNEVEN PAVEMENT" SIGNS THAT CONFORM TO THE ABOVE DETAILS. A MINIMUM OF ONE SIGN AT EACH END OF THE IMPROVEMENT WILL BE REQUIRED. THE CONTRACTOR SHALL MAINTAIN THE "UNEVEN PAVEMENT" SIGNS UNTIL THE RESURFACING OPERATIONS ARE COMPLETED.

IF AT ANY TIME THE SIGNS ARE IN PLACE BUT NOT APPLICABLE, THEY SHALL BE TURNED FROM THE VIEW OF MOTORISTS OR COVERED AS DIRECTED BY THE ENGINEER.

THE COST OF FURNISHING, ERECTING, MAINTAINING, AND REMOVING THE REQUIRED SIGNS SHALL BE INCLUDED IN THE CONTRACT.

STD. 9-41

REVISIONS	
DRAWN	2-15-89
REVISED	4-06-93
REDESIGNED	
RESIZED	
REVIEWED	5-17-13

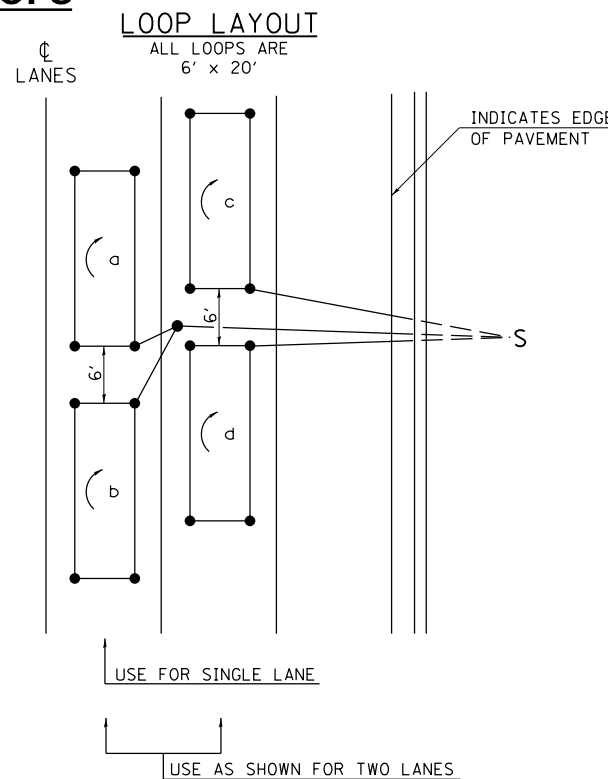
**DETAIL OF DETECTOR LOOPS**

**NOTES**

1. THE DETECTOR LOOPS SHALL BE TYPE 1. EACH DETECTOR LOOP SHALL HAVE 3 TURNS OF LOOP WIRE AND BE INSTALLED IN ACCORDANCE WITH THE APPLICABLE PORTIONS OF SECTION 886 OF THE STANDARD SPECIFICATIONS FOR TRAFFIC CONTROL ITEMS.
2. BEGINNING LEAD WIRES SHALL BE CONNECTED TO THE BLACK LEAD AND THE ENDING LEAD WIRES SHALL BE CONNECTED TO THE WHITE LEAD OF THE TWIN TWISTED FEED CABLES AT THE SPLICE POINT.
3. WHERE THE LOOPS ARE INSTALLED PRIOR TO RESURFACING, THE LOOP CORNERS SHALL BE DIAGONALLY CUT.

**LOOP LEGEND**

- ( ) CLOCKWISE ROTATION FOR LOOP WIRES
- S INDICATES SPLICE POINT FOR DETECTOR LOOP LEAD
- INDICATES 2" CORE-DRILL



DETAIL 6' x 20' DETECTOR LOOPS

REVISIONS	
REDRAWN	5-13-02
REVISED	10-27-05
REVISED	3-26-08
REDRAWN	3-16-11
REVISED	4-12-13

STD. 9-92

FILE NAME =	USER NAME = pritchettl	DESIGNED -	REVISED -
pw:\ill084EBIDINTEG.illinois.gov\PIDOT\Documents\IDOT Offices\District 9\Projects\78565\Drawings\CAD\Drawings\78565.sht.dgn		REVISED -	REVISED -
Default	PLOT SCALE = 100.0000' / in.	CHECKED -	REVISED -
	PLOT DATE = 4/28/2017	DATE -	REVISED -

STATE OF ILLINOIS  
DEPARTMENT OF TRANSPORTATION

DETAIL: ROUGH GROOVED SURFACE, UNEVEN LANE SIGN  
DETAIL: DETECTOR LOOPS

SCALE: SHEET OF SHEETS STA. TO STA.

• 9733,1911

F.A.U.S. RTE.	SECTION	COUNTY	TOTAL SHEETS	SHEET NO.
	(9,10)RS-5	JACKSON	25	25
CONTRACT NO. 78565				
ILLINOIS FED. AID PROJECT				