

STATE OF ILLINOIS  
DEPARTMENT OF TRANSPORTATION  
DIVISION OF HIGHWAYS

PROPOSED  
HIGHWAY PLANS

VARIOUS ROUTES  
SECTION D 6 HT PVMNT MRK RPR 23-06  
VARIOUS COUNTIES

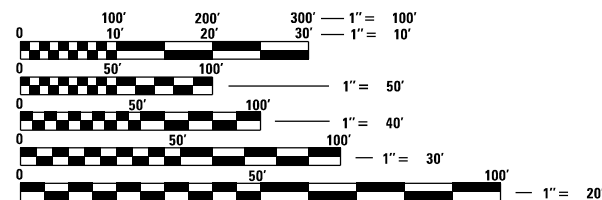
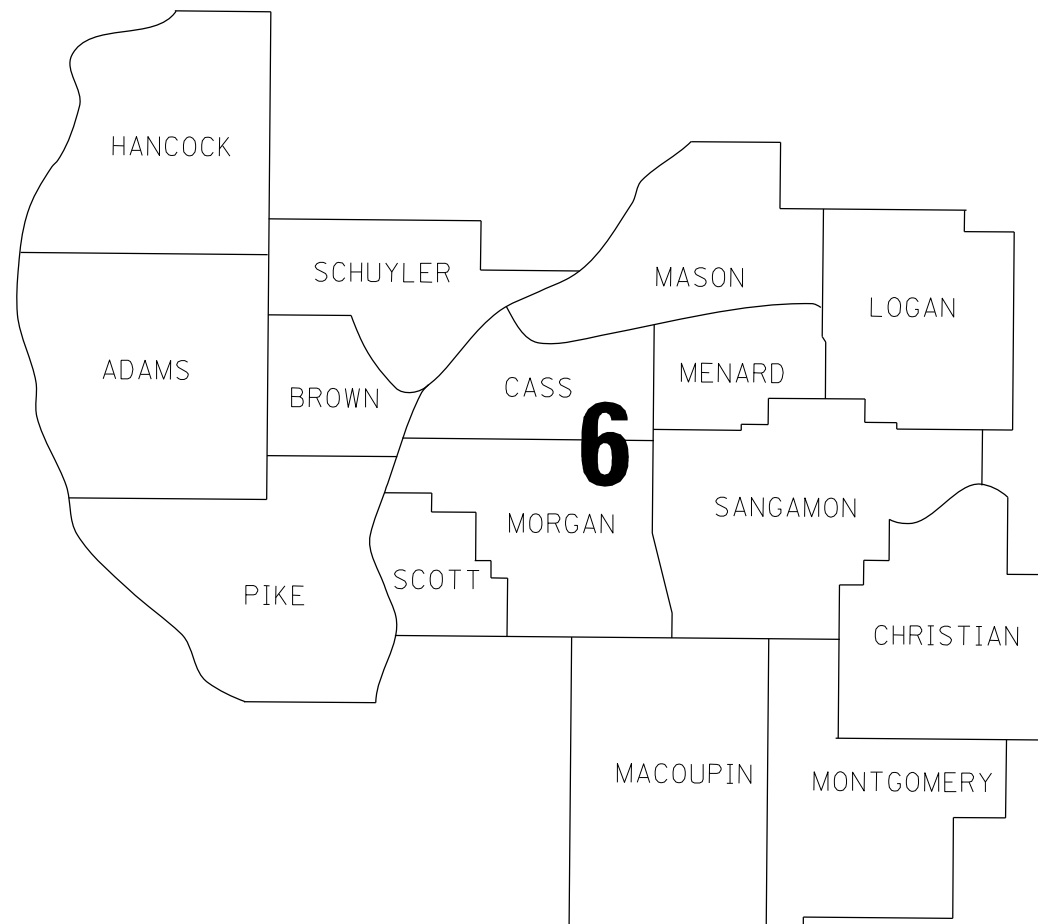
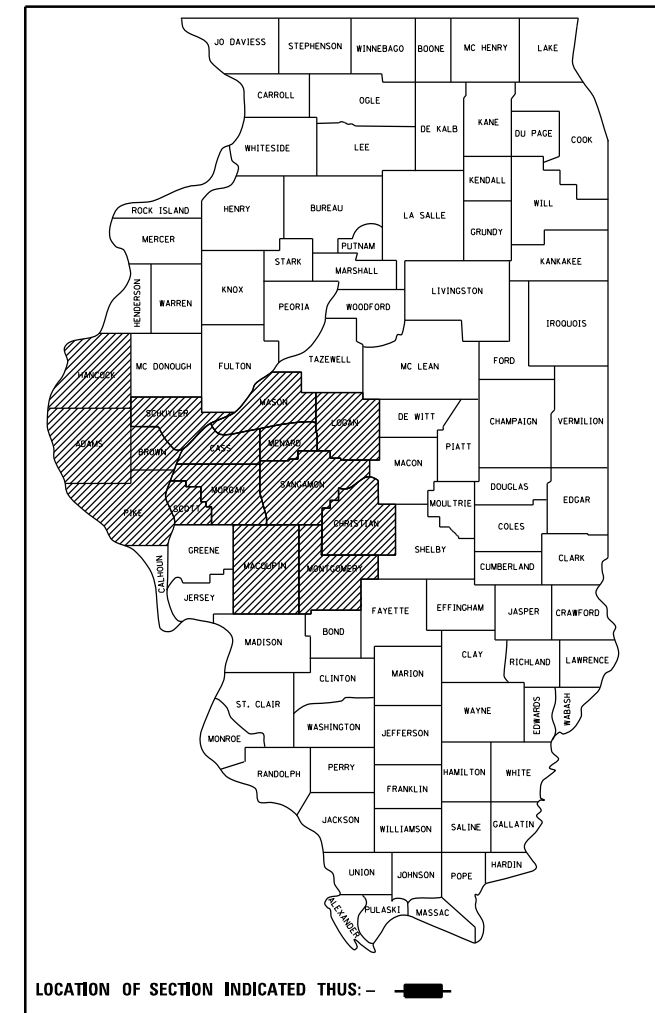
M-60-006-23

FOR INDEX OF SHEETS, SEE SHEET NO. 2

RTE.	SECTION	COUNTY	TOTAL SHEETS	SHEET NO.
VAR.	•	VARIOUS	15	1
		ILLINOIS	CONTRACT NO. 46596	

•D-6 HT PVMNT MRK RPR 23-06

D-XX-XXX-XX



FULL SIZE PLANS HAVE BEEN PREPARED USING STANDARD ENGINEERING SCALES. REDUCED SIZED PLANS WILL NOT CONFORM TO STANDARD SCALES. IN MAKING MEASUREMENTS ON REDUCED PLANS, THE ABOVE SCALES MAY BE USED.

J.U.L.I.E.  
JOINT UTILITY LOCATION INFORMATION FOR EXCAVATION  
1-800-892-0123  
OR 811

PROJECT ENGINEER: JASON JONES (217) 785-5306  
PROJECT MANAGER: ERIC RENT (217) 785-0289

CONTRACT NO. 46596

STATE OF ILLINOIS  
DEPARTMENT OF TRANSPORTATION  
DIVISION OF HIGHWAYS

SUBMITTED March 22 2022

*John P. Meyer*  
REGION FOUR ENGINEER

June 10, 2022 *Scott A. Etkin*  
ENGINEER OF DESIGN AND ENVIRONMENT

June 10, 2022 *Stephen M. ...*  
DIRECTOR OF HIGHWAYS PROJECT IMPLEMENTATION

PRINTED BY THE AUTHORITY  
OF THE STATE OF ILLINOIS

INDEX OF SHEETS

- 1 COVER SHEET
- 2 INDEX OF SHEETS, STANDARDS, & SIGNATURES
- 3 SUMMARY OF QUANTITIES
- 4-15 SCHEDULE OF QUANTITIES

STANDARDS

- 701311-03 LANE CLOSURE 2L,2W-MOVING OP DAY ONLY
- 701400-11 APPROACH TO LANE CLOSURE-FREEWAY EXPRESSWAY
- 701406-13 LANE CLOSURE FREEWAY EXPRESSWAY-DAY OP ONLY
- 701426-09 LANE CLOSURE MULTI LANE-INTERMITTANT OR MOVING OP 45 MPH OR MORE
- 701501-06 URBAN LANE CLOSURE 2L,2W-UNDIVIDED
- 701502-09 URBAN LANE CLOSURE 2L,2W WITH BIDIRECT LEFT TURN LANE
- 701701-10 URBAN LANE CLOSURE MULTILANE INTERSECTION
- 701901-08 TRAFFIC CONTROL DEVICES
- 000001-08 STANDARD SYMBOLS, ABBREVIATIONS AND PATTERNS
- 001006 DECIMAL OF AN INCH AND OF A FOOT
- 780001-05 TYPICAL PAVEMENT MARKINGS

REV. - MS

\*D-6 HT PVMNT MRK RPR 23-06

FILE NAME =	USER NAME = rentem	DESIGNED -	REVISED -	<b>STATE OF ILLINOIS DEPARTMENT OF TRANSPORTATION</b>	<b>GENERAL NOTES</b>	RTE.	SECTION	COUNTY	TOTAL SHEETS	SHEET NO.
S:\CONTRMAINT_CAD\46596 D6 HT PVMNT MRK	RPR 23-06\46596 PLANS\sheet 2-GenNotes.dwg	DRAWN -	REVISED -			VAR.	*	VARIOUS	15	2
Default	PLOT SCALE = 2.0000' / 1in.	CHECKED -	REVISED -			CONTRACT NO. 46596				
	PLOT DATE = 3/22/2022	DATE -	REVISED -			SCALE:	SHEET OF SHEETS	STA. TO STA.	ILLINOIS FED. AID PROJECT	

CODE NO.	ITEM	UNIT	TOTAL QUANTITY	100% STATE	100% STATE	100% STATE	100% STATE	100% STATE	100% STATE	100% STATE	100% STATE	100% STATE	100% STATE	100% STATE	100% STATE	100% STATE
				ADAMS	BROWN	CASS	CHRISTIAN	HANCOCK	LOGAN	MACOUPIN	MASON	MENARD	MONTGOMERY	MORGAN	PIKE	SANGAMON
				ROADWAY 0021	ROADWAY 0021	ROADWAY 0021	ROADWAY 0021	ROADWAY 0021	ROADWAY 0021	ROADWAY 0021	ROADWAY 0021	ROADWAY 0021	ROADWAY 0021	ROADWAY 0021	ROADWAY 0021	ROADWAY 0021
78000100	THERMOPLASTIC PAVEMENT MARKING - LETTERS AND SYMBOLS	SQ FT	2,795	-	-	-	94	122	484	1,030	479	-	463	-	-	123
78000400	THERMOPLASTIC PAVEMENT MARKING - LINE 6"	FOOT	7,074	-	-	-	-	-	1,100	2,900	1,028	-	1,950	-	-	96
78000500	THERMOPLASTIC PAVEMENT MARKING - LINE 8"	FOOT	1,190	260	-	-	165	-	203	-	422	-	140	-	-	-
78000600	THERMOPLASTIC PAVEMENT MARKING - LINE 12"	FOOT	5,939	55	-	-	80	-	692	3,690	456	-	870	-	-	96
78000650	THERMOPLASTIC PAVEMENT MARKING - LINE 24"	FOOT	2,208	62	24	32	-	110	459	463	423	-	243	52	-	340
78009000	MODIFIED URETHANE PAVEMENT MARKING - LETTERS AND SYMBOLS	SQ FT	10,187	297	-	671	234	-	2,444	700	-	250	1,366	-	515	3,710
78009005	MODIFIED URETHANE PAVEMENT MARKING - LINE 5"	FOOT	850,012	43,800	-	79,025	48,660	-	137,890	50,905	-	33,625	99,095	8,075	251,040	97,897
78009006	MODIFIED URETHANE PAVEMENT MARKING - LINE 6"	FOOT	47,253	1,408	-	3,592	1,006	-	10,450	5,324	-	1,439	6,084	-	2,416	15,534
78009008	MODIFIED URETHANE PAVEMENT MARKING - LINE 8"	FOOT	24,092	900	-	1,694	-	120	3,404	110	-	250	2,061	300	9,255	5,998
78009012	MODIFIED URETHANE PAVEMENT MARKING - LINE 12"	FOOT	15,116	605	-	1,805	1,590	40	1,595	686	-	1,465	2,665	125	905	3,635
78009024	MODIFIED URETHANE PAVEMENT MARKING - LINE 24"	FOOT	6,309	166	-	690	30	60	1,678	384	-	80	650	30	260	2,281
78300201	PAVEMENT MARKING REMOVAL - GRINDING	SQ FT	10,000	769	769	769	769	769	770	769	769	769	769	769	770	770
X7800825	HOT SPRAY THERMOPLASTIC PAVEMENT MARKING LINE - 5 INCH	FOOT	68,535	-	-	-	3,200	-	11,200	32,560	9,410	-	12,125	-	-	40
X7800835	HOT SPRAY THERMOPLASTIC PAVEMENT MARKING LINE - 6 INCH	FOOT	5,250	-	-	-	325	-	1,680	1,320	1,160	-	765	-	-	-

REV. - MS

•D-6 HT PVMNT MRK RPR 23-06

FILE NAME =	USER NAME = rentem	DESIGNED -	REVISED -	<b>STATE OF ILLINOIS DEPARTMENT OF TRANSPORTATION</b>	<b>SUMMARY OF QUANTITIES</b>				RTE.	SECTION	COUNTY	TOTAL SHEETS	SHEET NO.
S:\CONTRMAINT_CAD\46596 DB HT PVMNT MRK RPR 23-06\46596 PLANS\sheet 3-500.dgn	DRAWN -	REVISED -	VAR.						*	VARIOUS	15	3	
Default	PLOT SCALE = 2.0000' / 1in.	CHECKED -	REVISED -		SCALE: SHEET OF SHEETS STA. TO STA.				ILLINOIS FED. AID PROJECT				
	PLOT DATE = 3/22/2022	DATE -	REVISED -						CONTRACT NO. 46596				

CN 46596		MODIFIED URETHANE PAVEMENT MARKING		78009005		78009006	78009008	78009012		7809024	78009000	Notes/Comments
Work Order Job #	County	Nearest Town	Location Description	5 INCH MODIFIED URETHANE	5 INCH MODIFIED URETHANE	6 INCH MODIFIED URETHANE	8 INCH MODIFIED URETHANE	12 INCH MODIFIED URETHANE	12 INCH MODIFIED URETHANE	24 INCH MODIFIED URETHANE	LETTERS AND SYMBOLS MODIFIED URETHANE	
				WHITE	YELLOW	WHITE	WHITE	WHITE	YELLOW	WHITE	WHITE	
1	Adams	Quincy	IL 96: Kochs Ln Int to 550' N.	1,000	2,000	120	-	-	125	24	-	6" storage lines 120'
2	Adams	Quincy	IL 96 (Exit 10) Overpass, 500' NW of Lancaster Dr to Bridge BJ @ County Rd 1000th (St Anthony Rd), includes 100' on ramps	6,200	5,850	480	300	180	-	72	125	8 each turn arrows, removal to be determined by engineer
3	Adams	Quincy (9.5 Mi S)	I-57 & I-172 Interchange & Ramps (Exit 2) includes underpass 2500' SE of 1100th St to MP 1.00 ON ILL 57	15,350	13,400	808	600	300	-	70	172	6" storage lines 700', 6" mini skips 108', 11 each turn arrows, removal to be determined by engineer
4	Cass	Beardstown	IL 100/US 67: BJ 280' N of IL 125 to BJ 50' S of Garden Ave.	1,325	1,250	355	-	-	150	75	94	6" storage lines 325', 6" mini skips 30'
5	Cass	Beardstown	IL 125: E Abut. of IL River Bridge to 720' E of Walmart Int.	32,232	44,218	3,237	1,694	340	1,315	615	577	6" storage lines & 6" crosswalks, 37 each turn arrows
6	Christian	Pana	US 51/N 2600 East Rd Intersection: 820' E to 900' W	3,440	5,930	376	-	-	960	20	62	6" storage lines, 4 each turn arrows
7	Christian	Taylorville	IL 29: 830' N of Kennedy Rd to 180' S of N 1600 E Rd, Include Stop Bar at N 1600 E Rd	20,500	18,790	630	-	-	630	10	172	6" storage lines, 11 each turn arrows
8	Hancock	Warsaw (3mi E)	IL 96/N Co Rd 700/ Main St Int.: Stop Bar/ Island Only	-	-	-	120	40	-	60	-	
9	Logan	Atlanta	Exit 140 Overpass: Historic 66 to BJ 330' E of 2050 Rd	7,000	6,650	450	350	150	-	60	125	6" storage lines, 8 each turn arrows
10	Logan	Hartsburg	I-155 Exit 6 Hartsburg overpass: 580' W of SB Ramps to 580' E of NB Ramps	3,500	3,940	400	-	-	-	-	62	6" storage lines, 4 each turn arrows

\*PAVEMENT MARKING REMOVAL GRINDING TO BE DETERMINED BY THE ENGINEER ON AN AS NEEDED BASIS

\*D-6 HT PVMNT MRK RPR 23-06

FILE NAME =	USER NAME = rentem	DESIGNED -	REVISED -	<b>STATE OF ILLINOIS DEPARTMENT OF TRANSPORTATION</b>	<b>LOCATIONS: MODIFIED URETHANE #1-10 (ADAMS,CASS,CHRISTIAN,HANCOCK,LOGAN)</b>	RTE.	SECTION	COUNTY	TOTAL SHEETS	SHEET NO.
S:\CONTRMAINT_CAD\46596 D6 HT PVMNT MRK RPR 23-06\46596 PLANS\sheet 4-15 Locations	DRAWN -	REVISED -	VAR.			*	VARIOUS	15	4	
Default	PLOT SCALE = 2.0000' / in.	CHECKED -	REVISED -			CONTRACT NO. 46596				
	PLOT DATE = 3/22/2022	DATE -	REVISED -			SCALE:	SHEET OF SHEETS	STA. TO STA.	ILLINOIS FED. AID PROJECT	

CN 46596		MODIFIED URETHANE PAVEMENT MARKING				78009005		78009006	78009008	78009012		7809024	78009000	Notes/Comments
Work Order Job #	County	Nearest Town	Location Description	5 INCH MODIFIED URETHANE	5 INCH MODIFIED URETHANE	6 INCH MODIFIED URETHANE	8 INCH MODIFIED URETHANE	12 INCH MODIFIED URETHANE	12 INCH MODIFIED URETHANE	24 INCH MODIFIED URETHANE	LETTERS AND SYMBOLS MODIFIED URETHANE			
				WHITE	YELLOW	WHITE	WHITE	WHITE	YELLOW	WHITE	WHITE			
11	Logan	Lincoln	Lincoln Pkwy/Hickox Dr/Postville Dr (500' (6 stop bars) to 1400' N (1 Stop Bar) of Woodlawn Rd): 7 Stop Bars Total	-	-	-	-	-	-	96	-			
12	Logan	Lincoln	Nicholson Rd/Feldman Dr Int.: 1 Stop Bar, Kankakee St/ Feldman Dr int.: 1 stop Bar	-	-	-	-	-	-	24	-			
13	Logan	Lincoln	Lincoln Pkwy/Jefferson St Int: 1 stop bar, Jefferson St/ West Feldman Dr Int.: 1 stop Bar, West Feldman Dr/North Union St Int.: 1 stop bar	-	-	-	-	-	-	45	-			
14	Logan	Lincoln	Woodlawn Ave: BJ 675' W of Qual Run Dr to 485' E of Woodlawn/Lincoln Parkway Intersection	28,700	22,500	9,600	2,700	950	300	1,340	2,151	6" storage lines & mini skips, 120 each turn arrows, 5 each combo arrows, 6 each through arrows, 2 each lane drop arrows		
15	Logan	Lincoln	I-55 Exit 123: All 5 Ramps	30,500	30,500	-	320	150	-	72	106	4 each turn arrows, 4 each through arrows		
16	Logan	Lincoln	Old Route 121: Lincoln Pkwy to 160' N of Hickox Dr	2,600	2,000	-	34	31	14	41	-			
17	Macoupin	Carlinville	IL 4/108 Int to 410' S of Int. on IL 4	750	575	-	110	20	-	40	-			
18	Macoupin	Carlinville	IL 108: McCausland St to IL4/IL 108 Int near S Center St, includes Town Square	12,100	-	1,100	-	-	-	200	452	turn arrows, RR symbol		
19	Macoupin	Nilwood	IL 4: Int of Morean St, Stop Bar Only	-	-	-	-	-	-	14	-			
20	Macoupin	Nilwood	Morean St: Rail Road Crossing Only	-	-	-	-	-	-	66	122	RR symbol		

\*PAVEMENT MARKING REMOVAL GRINDING TO BE DETERMINED BY THE ENGINEER ON AN AS NEEDED BASIS

\*D-6 HT PVMNT MRK RPR 23-06

FILE NAME = S:\CONTRMAINT_CAD\46596 D6 HT PVMNT MRK	USER NAME = rentem	DESIGNED -	REVISED -	<b>STATE OF ILLINOIS DEPARTMENT OF TRANSPORTATION</b>	<b>LOCATION MODIFIED URETHANE #11-20 (LOGAN, MACOUPIN)</b>	RTE.	SECTION	COUNTY	TOTAL SHEETS	SHEET NO.
PLT SCALE = 2.0000' / in.	CHECKED -	REVISED -	VAR.			*	VARIOUS	15	5	
Default	DATE -	REVISED -	SCALE: SHEET OF SHEETS STA. TO STA.			CONTRACT NO. 46596		ILLINOIS FED. AID PROJECT		
PLOT DATE = 3/22/2022										

CN 46596		MODIFIED URETHANE PAVEMENT MARKING		78009005		78009006	78009008	78009012		7809024	78009000	Notes/Comments
Work Order Job #	County	Nearest Town	Location Description	5 INCH MODIFIED URETHANE	5 INCH MODIFIED URETHANE	6 INCH MODIFIED URETHANE	8 INCH MODIFIED URETHANE	12 INCH MODIFIED URETHANE	12 INCH MODIFIED URETHANE	24 INCH MODIFIED URETHANE	LETTERS AND SYMBOLS MODIFIED URETHANE	
				WHITE	YELLOW	WHITE	WHITE	WHITE	YELLOW	WHITE	WHITE	
21	Macoupin	Staunton	Route 4: Madison Co Line to 850' S of 8th St	4,800	4,500	-	-	-	-	-	-	
22	Macoupin	Staunton	Route 4: 560' S of Staunton Bunker Hill Rd to Pearl St/Hibbard St Int	1,400	2,650	1,850	-	135	-	20	-	6" storage, 6" mini skips & 6" crosswaks, 12" piano bars
23	Macoupin	Staunton	IL 4: Staunton Bunker Hill Rd In 720' N to 550' S, 130' W	2,600	2,800	186	-	-	125	-	31	6" storage & 6" mini skips, 2 each turn arrows
24	Macoupin	Staunton	IL 4: Pearl/Hackmann St to 850' S. of 8th St.	-	3,800	1,625	-	50	50	20	-	6" storage lines & 6" mini skips
25	Macoupin	Royal Lakes	IL 159/16: Laurel Ave to BJ 850' N of Caveny Lane	3,450	730	563	-	-	236	24	94	6" storage lines & 6" mini skips, 6 each turn arrows
26	Macoupin	Viriden	IL 4: BJ 400' S of IL4/Wright St. Int. to 2000' N of Rail Road Tracks (Hi Type Begins)	4,200	6,550	-	-	-	70	-	-	
27	Menard	Athens (3.7 Mi N)	IL 123 / IL 29 Int: 400' W, 2330' N, 1200' S	7,500	13,100	550	150	60	1,020	30	94	6" storage lines & 6" mini skips, 6 each turn arrows
28	Menard	Athens	IL 29/Springfield Rd/Hargrave St Int.: 1050' N, 1320' S, 230' W	4,925	2,450	464	-	-	-	20	62	6" storage lines & 6" mini skips, 4 each turn arrows
29	Menard	Petersburg	IL 123: 750' W to 400' E of Centre Dr	1,500	4,150	425	100	60	325	30	94	6" storage lines , 6 each turn arrows
30	Montgomery	Coffeen (S End)	IL 185: Deadlane (12"W Chevrons and 5"W Edge)	1,200	-	-	-	760	-	-	-	12" chevrons (dead lane)

\*PAVEMENT MARKING REMOVAL GRINDING TO BE DETERMINED BY THE ENGINEER ON AN AS NEEDED BASIS

\*D-6 HT PVMNT MRK RPR 23-06

FILE NAME =	USER NAME = rentem	DESIGNED -	REVISED -	<b>STATE OF ILLINOIS DEPARTMENT OF TRANSPORTATION</b>	<b>LOCATIONS MODIFIED URETHANE #21-30 (MACOUPIN, MENARD, MONTGOMERY)</b>	RTE.	SECTION	COUNTY	TOTAL SHEETS	SHEET NO.
S:\CONTRMINT_CAD\46596 D6 HT PVMNT MRK RPR 23-06\46596 PLANS\sheet 4-15 Locations	DRAWN -	REVISED -	VAR.			*	VARIOUS	15	6	
Default	PLOT SCALE = 2.0000' / in.	CHECKED -	REVISED -			CONTRACT NO. 46596				
	PLOT DATE = 3/22/2022	DATE -	REVISED -			ILLINOIS FED. AID PROJECT				

CN 46596		MODIFIED URETHANE PAVEMENT MARKING		78009005		78009006	78009008	78009012		7809024	78009000	Notes/Comments
Work Order Job #	County	Nearest Town	Location Description	5 INCH MODIFIED URETHANE	5 INCH MODIFIED URETHANE	6 INCH MODIFIED URETHANE	8 INCH MODIFIED URETHANE	12 INCH MODIFIED URETHANE	12 INCH MODIFIED URETHANE	24 INCH MODIFIED URETHANE	LETTERS AND SYMBOLS MODIFIED URETHANE	
				WHITE	YELLOW	WHITE	WHITE	WHITE	YELLOW	WHITE	WHITE	
31	Montgomery	Hillsboro (2mi W)	IL 16/127 Intersection: 800' N, 1250' W, 700' E of intersection	5,500	7,000	650	350	150	280	36	94	6" storage lines, 6 each turn arrows
32	Montgomery	Hillsboro	IL 185: Prison Entrance to 400' W	740	130	180	-	-	-	-	31	6" storage lines, 2 each turn arrows
33	Montgomery	Farmersville	Main St: N. East St to 580' E of mine Ave/E Frontage Rd intersection. Includes E&W Frontage Rd	7,000	7,150	400	142	145	289	90	-	
34	Montgomery	Litchfield	IL 16: Willowood St to Less Lane	7,600	950	-	-	-	-	-	-	
35	Montgomery	Litchfield	IL 16: Corvette/Industrial Dr to N. Monroe St	6,200	11,250	3,904	1,176	151	-	378	1,014	6" storage lines 2050', 6" crosswalks 1660', 6" mini skips 194', 57 each turn arrows, 3 each lane drop arrows
36	Montgomery	Litchfield	IL 16: N. Monroe St to Willowood Drive	19,120	-	400	-	-	-	40	-	
37	Montgomery	Raymond (3.5 Mi W)	I-55 Exit 63: 950' W of W. Frontage Rd to 850' E of E. Frontage Rd	11,700	10,355	550	393	160	100	106	228	6" storage lines, 4 each turn arrows, 4 each lane drop arrows
38	Montgomery	Raymond (1 Mi W)	IL 48: Dead Lane from E 5th Rd.	3,200	-	-	-	630	-	-	-	12" chevrons (dead lane)
39	Morgan	Bluffs (4.7 MI N)	IL 100: Int of IL 104/ US 67 to 1765' S OF INT.	4,125	3,950	-	300	125	-	30	-	
40	Pike	Hull	IL96 overpass I-72: 870' S of EB ramps to 870' N of WB ramps.	5,400	5,590	500	240	200	-	75	94	6" storage lines, 6 each turn arrows

\*PAVEMENT MARKING REMOVAL GRINDING TO BE DETERMINED BY THE ENGINEER ON AN AS NEEDED BASIS

\*D-6 HT PVMNT MRK RPR 23-06

FILE NAME =	USER NAME = rentem	DESIGNED -	REVISED -	<b>STATE OF ILLINOIS DEPARTMENT OF TRANSPORTATION</b>	<b>LOCATIONS</b>				RTE.	SECTION	COUNTY	TOTAL SHEETS	SHEET NO.
S:\CONTRMAINT_CAD\46596 D6 HT PVMNT MRK	RPR 23-06\46596 PLANS\sheet 4-15 Locations	DRAWN -	REVISED -		<b>MODIFIED URETHANE #31-40 (MONTGOMERY, MORGAN, PIKE)</b>				VAR.	*	VARIOUS	15	7
Default	PLOT SCALE = 2.0000' / in.	CHECKED -	REVISED -		SCALE:	SHEET	OF	SHEETS	STA.	TO	STA.	<b>CONTRACT NO. 46596</b>	
	PLOT DATE = 3/22/2022	DATE -	REVISED -		ILLINOIS FED. AID PROJECT								

CN 46596		MODIFIED URETHANE PAVEMENT MARKING		78009005		78009006	78009008	78009012		7809024	78009000	Notes/Comments
Work Order Job #	County	Nearest Town	Location Description	5 INCH MODIFIED URETHANE	5 INCH MODIFIED URETHANE	6 INCH MODIFIED URETHANE	8 INCH MODIFIED URETHANE	12 INCH MODIFIED URETHANE	12 INCH MODIFIED URETHANE	24 INCH MODIFIED URETHANE	LETTERS AND SYMBOLS MODIFIED URETHANE	
				WHITE	YELLOW	WHITE	WHITE	WHITE	YELLOW	WHITE	WHITE	
41	Pike	Hull	I-172 M.P. 1.70 to I-72 M.P. 11.17 (WBL) (BUTT JT), ILL 72 M.P. 0.00 (PIKE/ADAMS CO LINE) to M.P. 11.17 EBL (BUTT JT), OVERHEAD @ HULL EXIT # 10 INCLUDES RAMPS MEASUREMENT TO TOP	116,200	92,000	-	7,500	-	-	-	-	
42	Pike	Pittsfield	IL 54/ IL 106 Int: 575' E, 830' W, 120' N	3,000	4,450	496	390	100	220	34	94	6" storage lines & mini skips, 6 each turn arrows
43	Pike	Pittsfield (4.5 Mi N)	US 54 over I 72: 320' N of 290th Ave to 900' S of EB Ramps	6,400	6,000	920	525	225	-	76	172	6" storage lines & 6" mini skips, 11 each turn arrows
44	Pike	NW of Pittsfield	COUNTRY HIGHWAY 3 OVER I-72 NORTH OF PITTSFIELD: 1000' N OF WB RAMPS TO 1300'S OF EB RAMPS	6,000	6,000	500	600	160	-	75	156	6" storage lines & 6" mini skips, 10 each turn arrows
45	Sangamon	Athens (0.6 MI E)	IL 29: Railroad Crossing	-	-	-	-	-	-	72	122	RR symbol
46	Sangamon	Buffalo	I72/36 Exit 114 Overpass: 830' S of Cope St to 830' N of Water Tower Rd. Includes 100' on each ramp	7,400	7,250	440	365	180	60	70	125	6" storage lines, 8 each turn arrows
47	Sangamon	Chatham	Palm Rd: BJ 380' S of Chatham Rd int to BJ 725' S Lakewood Dr int	16,750	9,600	645	515	530	300	79	140	6" storage lines & 6" mini skips, 9 each turn arrows
48	Sangamon	Riverton	Exit 108 Overpass Rd: BJ at Desch Rd to BJ at CCX Rd	5,400	5,300	410	360	185	110	75	62	6" storage lines, 4 each turn arrows
49	Sangamon	Springfield	Jefferson/IL 97: Veterans Parkway to N. Koke Mill rd.	7,690	8,164	1,264	-	257	-	85	499	6" storage lines, 25 each turn arrows, 3 each combo arrows, 1 each lane drop arrow
50	Sangamon	Springfield	E. Madison St: 9th St to N. Amos Ave	5,550	-	4,350	2,385	524	-	970	1,158	6" storage lines 100', 6" crosswalk 4250', 12" chevrons 300', 12" piano bars 224', 6 each turn arrows, 24 each combo arrows, 40 each through arrows

\*PAVEMENT MARKING REMOVAL GRINDING TO BE DETERMINED BY THE ENGINEER ON AN AS NEEDED BASIS

\*D-6 HT PVMNT MRK RPR 23-06

FILE NAME =	USER NAME = rentm	DESIGNED -	REVISED -	<b>STATE OF ILLINOIS DEPARTMENT OF TRANSPORTATION</b>	<b>LOCATIONS MODIFIED URETHANE #41-50 (PIKE, SANGAMON)</b>	RTE.	SECTION	COUNTY	TOTAL SHEETS	SHEET NO.	
S:\CONTRMINT_CAD\46596 D6 HT PVMNT MRK	RPR 23-06\46596 PLANS\sheet 4-15 Locations	DRAWN -	REVISED -			VAR.	*	VARIOUS	15	8	
Default	PLOT SCALE = 2.0000' / in.	CHECKED -	REVISED -			SCALE:		SHEET OF SHEETS		STA. TO STA.	ILLINOIS FED. AID PROJECT
	PLOT DATE = 3/22/2022	DATE -	REVISED -			CONTRACT NO. 46596					



CN 46596		MODIFIED URETHANE PAVEMENT MARKING		78009005		78009006	78009008	78009012		7809024	78009000	Notes/Comments
Work Order Job #	County	Nearest Town	Location Description	5 INCH MODIFIED URETHANE	5 INCH MODIFIED URETHANE	6 INCH MODIFIED URETHANE	8 INCH MODIFIED URETHANE	12 INCH MODIFIED URETHANE	12 INCH MODIFIED URETHANE	24 INCH MODIFIED URETHANE	LETTERS AND SYMBOLS MODIFIED URETHANE	
				WHITE	YELLOW	WHITE	WHITE	WHITE	YELLOW	WHITE	WHITE	
51	Sangamon	Springfield	S. MacArthur Blvd: S. Bridge BJ to Knights Recreation Dr	1,775	2,900	1,400	-	900	34	-	-	
52	Sangamon	Springfield	Madison St: 9th St to 11th St	485	-	1,460	50	150	-	100	374	6" storage lines & 6" crosswalks, 2 each turn arrows, 2 each combo arrows, 4 each through arrows, RR symbol
53	Sangamon	Springfield	Jefferson St: 9th St to 11th St	500	330	860	46	100	-	200	184	6" crosswalks, RR symbol
54	Sangamon	Springfield	W. Mason St: Madison St to Walnut St (ramp)	-	-	-	-	-	-	-	12	1 each through arrow
55	Sangamon	Springfield	MacArthur Blvd /W. Madison St Intersection, Includes turn Lanes	88	325	345	350	-	-	180	31	6" crosswalks
56	Sangamon	Springfield	Clear Lake Ave: Dirksen Pkwy to I72 (End of NB-to-EB/ Begin of WB-to-NB Ramps)	8,890	9,500	4,360	1,927	270	35	405	830	6" crosswalks, 8" ramp gore, 8" islands, 41 each turn arrows
57	Sangamon	Springfield	Jefferson: Rail Road Tracks Between 2nd&4th St	-	-	-	-	-	-	45	173	RR symbol
Sub-Totals				453,485	396,527	47,253	24,092	8,368	6,748	6,309	10,187	
<b>Total Quantities</b>					<b>850,012</b>	<b>47,253</b>	<b>24,092</b>		<b>15,116</b>	<b>6,309</b>	<b>10,187</b>	<b>TOTALS</b>
				<b>78009005</b>		<b>78009006</b>	<b>78009008</b>		<b>78009012</b>	<b>78009024</b>	<b>78009000</b>	

•PAVEMENT MARKING REMOVAL GRINDING TO BE DETERMINED BY THE ENGINEER ON AN AS NEEDED BASIS

•D-6 HT PVMNT MRK RPR 23-06

MODEL PATH: S:\CONTRACTS\CAD\46596.D6 HT PVMNT MRK RPR 23-06\46596 PLANS\Sheet 4-15 Locations.dwg

USER NAME = reitem	DESIGNED -	REVISED -
	DRAWN -	REVISED -
PLOT SCALE = 2,000' / in.	CHECKED -	REVISED -
PLOT DATE = 3/22/2022	DATE -	REVISED -

**STATE OF ILLINOIS  
DEPARTMENT OF TRANSPORTATION**

**LOCATIONS  
MODIFIED URETHANE #51-57 (SANGAMON)**

SCALE: SHEET OF SHEETS STA. TO STA.

F.A. RTE.	SECTION	COUNTY	TOTAL SHEETS	SHEET NO.
	•	VARIOUS	15	9
CONTRACT NO. 46596				
ILLINOIS FED. AID PROJECT				

CN 46596		THERMOPLASTIC PAVEMENT MARKING		X7800825		X7800835	78000400	78000500	78000600		78000650	78000100	Notes/Comments
Work Order Job #	County	Nearest Town	Location Description	5 INCH HOT SPRAY THERMO WHITE	5 INCH HOT SPRAY THERMO YELLOW	6 INCH HOT SPRAY THERMO WHITE	6 INCH THERMO PLASTIC WHITE	8 INCH THERMO PLASTIC WHITE	12 INCH THERMO PLASTIC WHITE	12 INCH THERMO PLASTIC YELLOW	24 INCH THERMO PLASTIC WHITE	LETTERS AND SYMBOLS THERMO PLASTIC WHITE	
101	Adams	Camp Point (1.5 Mi E)	IL 24/IL 94 Int: North Leg of Int	-	-	-	-	130	55	-	32	-	
102	Adams	Ursa	IL 96/IL 61 Int: Int to 670' E	-	-	-	-	130	-	-	30	-	
103	Brown	Timewell	OLD US 24 & US 24 2 Intersection Locations	-	-	-	-	-	-	-	24	-	
104	Cass	Chandlerville (1.2 MI S)	IL 78/Chandlerville Rd Int.: Stop Bar Only	-	-	-	-	-	-	-	32	-	
105	Christian	Pana	N Poplar St: US 51/16 (E. 1st St) to IL 29(W.Washington St)	850	900	325	-	-	-	80	-	94	6" storage lines, 6 each turn arrows
106	Christian	Pana	N. Hickory St: Jackson St (US 51) to E. Washington St	-	1,450	-	-	165	-	-	-	-	
107	Hancock	W of Carthage	US 136: N Co Rd. 1800 (2 locations, 2 stop bars, N side of road only)	-	-	-	-	-	-	-	30	-	
108	Hancock	La Harpe	IL 9: Rail Road Crossing on West End of town	-	-	-	-	-	-	-	80	122	RR symbol
109	Logan	Broadwell	800th Ave/ Old Rt 66 Int.: Stop bar/ Island only	-	-	-	-	140	30	-	38	-	
110	Logan	Elkhart	Frontage Rd/Kennedy Rd Int: Stop Bar Only	-	-	-	-	-	-	-	17	-	

•PAVEMENT MARKING REMOVAL GRINDING TO BE DETERMINED BY THE ENGINEER ON AN AS NEEDED BASIS

•D-6 HT PVMNT MRK RPR 23-06

FILE NAME =	USER NAME = rentem	DESIGNED -	REVISED -	<b>STATE OF ILLINOIS DEPARTMENT OF TRANSPORTATION</b>	<b>LOCATIONS: HOT SPRAY/THERMO #101-110 (ADAMS,BROWN,CASS,CHRISTIAN,HANCOCK,LOGAN)</b>	RTE.	SECTION	COUNTY	TOTAL SHEETS	SHEET NO.	
S:\CONTRMAINT_CAD\46596 D6 HT PVMNT MRK	RPR 23-06\46596 PLANS\sheet 4-15 Locations	DRAWN -	REVISED -			VAR.	*	VARIOUS	15	10	
Default	PLOT SCALE = 2.0000' / in.	CHECKED -	REVISED -			CONTRACT NO. 46596		ILLINOIS FED. AID PROJECT			
	PLOT DATE = 3/22/2022	DATE -	REVISED -			SCALE:	SHEET OF SHEETS	STA. TO STA.			

CN 46596		THERMOPLASTIC PAVEMENT MARKING		X7800825		X7800835	78000400	78000500	78000600		78000650	78000100	Notes/Comments
Work Order Job #	County	Nearest Town	Location Description	5 INCH HOT SPRAY THERMO	5 INCH HOT SPRAY THERMO	6 INCH HOT SPRAY THERMO	6 INCH THERMO PLASTIC	8 INCH THERMO PLASTIC	12 INCH THERMO PLASTIC	12 INCH THERMO PLASTIC	24 INCH THERMO PLASTIC	LETTERS AND SYMBOLS THERMO PLASTIC	
				WHITE	YELLOW	WHITE	WHITE	WHITE	WHITE	YELLOW	WHITE	WHITE	
111	Logan	Lincoln	IL 10/Keokuk St/IL 121 Int.: Intersection to 175' NE on IL 10	-	400	150	-	-	-	15	18	-	
112	Logan	Lincoln	IL 10/Keokuk St: 370' E of Commercial Dr, Rail Road Crossing	-	-	-	-	-	-	-	90	122	RR symbol
113	Logan	Lincoln	IL 12: Kickapoo St to Pulaski St	-	10,800	1,530	1,100	-	460	175	125	239	6" storage lines 1080', 6" crosswalks 1100', 12" piano bars 460', 12" yellow chevron 175', 10 each turn arrows, 2 each lane drop arrows
114	Logan	Lincoln (1.4 Mi S)	IL 121: Rail Road Crossing	-	-	-	-	-	-	-	90	122	RR symbol
115	Logan	Latham	IL 121/4th St (East) Int.: Stop Bar Only	-	-	-	-	-	-	-	16	-	
116	Logan	Latham	IL 121/4th St (West) Int: Stop Bar Only	-	-	-	-	-	-	-	16	-	
117	Logan	Mt Pulaski	McDonald St/ IL 54 Int.: Stop bar (West Leg Only and Island Only	-	-	-	-	63	12	-	38	-	
118	Logan	Mt Pulaski	Mcdonald St/ IL 121: Stopbar on East Leg Only	-	-	-	-	-	-	-	11	-	
119	Macoupin	Bunker Hill (1.7mi N)	Int of IL 159 and IL 138: Stop bar on East Leg Only	-	-	-	-	-	-	-	14	-	
120	Macoupin	Bunker Hill	IL 159: W. Morgan St to 250' S of W. Orange St	2,205	720	-	900	-	1,295	45	34	-	5" white edgeline and 5" parking lines, 6" crosswalks, 12" diagonals 1050', 12" piano bars 200'

\*PAVEMENT MARKING REMOVAL GRINDING TO BE DETERMINED BY THE ENGINEER ON AN AS NEEDED BASIS

\*D-6 HT PVMNT MRK RPR 23-06

FILE NAME =	USER NAME = rentem	DESIGNED -	REVISED -	<b>STATE OF ILLINOIS DEPARTMENT OF TRANSPORTATION</b>	<b>LOCATION HOT SPRAY/THERMO #111-120 (LOGAN, MACOUPIN)</b>	RTE.	SECTION	COUNTY	TOTAL SHEETS	SHEET NO.		
S:\CONTRMAINT_CAD\46596 D6 HT PVMNT MRK	RPR 23-06\46596 PLANS\sheet 4-15 Locations	DRAWN -	REVISED -			VAR.	*	VARIOUS	15	11		
Default	PLOT SCALE = 2.0000' / in.	CHECKED -	REVISED -			SCALE:		SHEET OF SHEETS		STA. TO STA.	ILLINOIS FED. AID PROJECT	
	PLOT DATE = 3/22/2022	DATE -	REVISED -			CONTRACT NO. 46596						

CN 46596		THERMOPLASTIC PAVEMENT MARKING		X7800825		X7800835	78000400	78000500	78000600		78000650	78000100	Notes/Comments
Work Order Job #	County	Nearest Town	Location Description	5 INCH HOT SPRAY THERMO	5 INCH HOT SPRAY THERMO	6 INCH HOT SPRAY THERMO	6 INCH THERMO PLASTIC	8 INCH THERMO PLASTIC	12 INCH THERMO PLASTIC	12 INCH THERMO PLASTIC	24 INCH THERMO PLASTIC	LETTERS AND SYMBOLS THERMO PLASTIC	
				WHITE	YELLOW	WHITE	WHITE	WHITE	WHITE	YELLOW	WHITE	WHITE	
121	Macoupin	Carlinville	IL 4/Broadway St: Shad Rd to North Side Square	23,950	-	1,150	680	-	1,000	-	100	515	33 each turn arrows
122	Macoupin	Carlinville (6.6 Mi SW)	Shipman Rd (Beaver Dam State Park Entrance): 2 Stop Bars Only	-	-	-	-	-	-	-	24	-	
123	Macoupin	Gillespie (3.5 Mi N)	Route 4: Rail Road Crossing	-	-	-	-	-	-	-	72	122	RR symbol
124	Macoupin	Gillespie	IL 4: IL 16(Elm St.) to E Easton Ave, includes Historic Rt 66 (Pine St) to Gillespie St. (No Parking Lanes)	400	5,285	170	1,320	-	1,320	30	46	270	6" storage lines 170' & crosswalks 1320', 12" piano bars 122', 14 each turn arrows & 2 each combo arrows
125	Macoupin	Mt Olive (N End)	Old Rt 66: Int of Old Rt 66 w Old Rt 66 (0.3 Mi S of St. John Rd), Stop bar only	-	-	-	-	-	-	-	20	-	
126	Macoupin	Mt Olive (S End)	Old Rt 66: Int of Old Rt 66 w Old Rt 66 (400' N of Tall Timber Rd), Stop Bar Only	-	-	-	-	-	-	-	30	-	
127	Macoupin	Mt Olive (S End)	Int Old Rt 66 and E Frontage Rd (N of I-55 Exit 41): Stop bar only	-	-	-	-	-	-	-	17	-	
128	Macoupin	Staunton	Staunton Rd and Rt 66 Int: Stop Bar only	-	-	-	-	-	-	-	26	-	
129	Macoupin	Viriden (0.5 Mi S)	IL 4: Rail Road Crossing and Stop bars at side roads	-	-	-	-	-	-	-	80	122	RR symbol
130	Mason	Bath	IL 79/ Main St Int.: Crosswalk only	-	-	-	78	72	-	-	-	-	

\*PAVEMENT MARKING REMOVAL GRINDING TO BE DETERMINED BY THE ENGINEER ON AN AS NEEDED BASIS

\*D-6 HT PVMNT MRK RPR 23-06

FILE NAME = S:\CONTRMAINT_CAD\46596 D6 HT PVMNT MRK	USER NAME = rentem	DESIGNED -	REVISED -	<b>STATE OF ILLINOIS DEPARTMENT OF TRANSPORTATION</b>	<b>LOCATIONS HOT SPRAY/THERMO #121-130 (MACOUPIN, MASON)</b>	RTE.	SECTION	COUNTY	TOTAL SHEETS	SHEET NO.
RPR 23-06\46596 PLANS\sheet 4-15 Locations	DRAWN -	REVISED -	VAR.				VARIOUS	15	12	
PLOT SCALE = 2.0000' / in.	CHECKED -	REVISED -	CONTRACT NO. 46596							
Default	DATE -	REVISED -	SCALE:			SHEET OF SHEETS	STA. TO STA.	ILLINOIS FED. AID PROJECT		

CN 46596		THERMOPLASTIC PAVEMENT MARKING				X7800825		X7800835	78000400	78000500	78000600		78000650	78000100	NOTES/COMMENTS
Work Order Job #	County	Nearest Town	Location Description	5 INCH HOT SPRAY THERMO	5 INCH HOT SPRAY THERMO	6 INCH HOT SPRAY THERMO	6 INCH THERMO PLASTIC	8 INCH THERMO PLASTIC	12 INCH THERMO PLASTIC	12 INCH THERMO PLASTIC	24 INCH THERMO PLASTIC	LETTERS AND SYMBOLS THERMO PLASTIC			
				WHITE	YELLOW	WHITE	WHITE	WHITE	WHITE	YELLOW	WHITE	WHITE			
131	Mason	Chandlerville (1.1 MI N)	IL 78 over Sangamon River: Boat Ramp Stop Bar Only	-	-	-	-	-	-	-	25	-			
132	Mason	Havana	US 136: 450' E of int of IL 97 to 50' E of Charlotte St	1,075	1,810	185	300	100	227	60	62	162	6" crosswalk, 12" piano bars, 12" yellow chevrons		
133	Mason	Havana	IL 97. Int of Windsor St to int of Promenade St	700	400	-	-	-	-	24	24	-	12" yellow chevrons		
134	Mason	Havana	US 136: IL River Bridge Abutment to Promenade St	450	4,700	750	650	-	-	70	225	317	12" yellow chevrons		
135	Mason	Havana	IL 78: US 136 Int to 350' S, Include US 136 EB-to-SB Turn Lane (storage line, Edge Line, Arrows, Island, Chevrons)	275	-	225	-	250	75	-	75	-			
136	Mason	Mason City (1.3 MI S)	IL 29/ 850N Rd Int.: Stop Bar Only	-	-	-	-	-	-	-	12	-			
137	Montgomery	Coffeen (W End)	IL 185: Railroad Crossing	-	-	-	-	-	-	-	66	122	RR symbol		
138	Montgomery	Donnellson	IL 127: Railroad Crossing	-	-	-	-	-	-	-	72	122	RR symbol		
139	Montgomery	Hillsboro	IL 16/School St: Rountree St to 22nd St	2,800	3,925	-	-	-	-	-	-	-			
140	Montgomery	Litchfield	Old Rt 66/ Washington Rd Int: stop bar, island only	-	-	-	-	140	65	-	11	-			

\*PAVEMENT MARKING REMOVAL GRINDING TO BE DETERMINED BY THE ENGINEER ON AN AS NEEDED BASIS

\*D-6 HT PVMNT MRK RPR 23-06

FILE NAME =	USER NAME = rentem	DESIGNED -	REVISED -	<b>STATE OF ILLINOIS DEPARTMENT OF TRANSPORTATION</b>	<b>LOCATIONS HOT SPRAY/THERMO #131-140 (MASON, MONTGOMERY)</b>	RTE.	SECTION	COUNTY	TOTAL SHEETS	SHEET NO.
S:\CONTRMAINT_CAD\46596 D6 HT PVMNT MRK	RPR 23-06\46596 PLANS\sheet 4-15 Locations	DRAWN -	REVISED -			VAR.	*	VARIOUS	15	13
Default	PLOT SCALE = 2.0000' / in.	CHECKED -	REVISED -			CONTRACT NO. 46596				
	PLOT DATE = 3/22/2022	DATE -	REVISED -			ILLINOIS FED. AID PROJECT				

CN 46596		THERMOPLASTIC PAVEMENT MARKING		X7800825		X7800835	78000400	78000500	78000600		78000650	78000100	NOTES/COMMENTS
Work Order Job #	County	Nearest Town	Location Description	5 INCH HOT SPRAY THERMO	5 INCH HOT SPRAY THERMO	6 INCH HOT SPRAY THERMO	6 INCH THERMO PLASTIC	8 INCH THERMO PLASTIC	12 INCH THERMO PLASTIC	12 INCH THERMO PLASTIC	24 INCH THERMO PLASTIC	LETTERS AND SYMBOLS THERMO PLASTIC	
				WHITE	YELLOW	WHITE	WHITE	WHITE	WHITE	YELLOW	WHITE	WHITE	
141	Montgomery	Litchfield (0.5 Mi N of Weigh Station)	Int of N 16th with W Frontage Rd (1 Stopbar), Int of N 16th Ave with E Frontage Rd (2 Stopbars)	-	-	-	-	-	-	-	42	-	
142	Montgomery	Nokomis	IL 16: S. Spruce St to 250' SW of S. Vine St	1,200	2,250	440	1,350	-	510	-	40	125	6" storage lines 440', 6" crosswalks 1000', 6" parking lane 350', 12" piano bars 410', 8 each turn arrows
143	Montgomery	Nokomis	IL 16: Elm St to S. Spruce St	550	1,400	325	600	-	220	75	-	94	6" storage lines 325', 6" crosswalks 450', 6" parking lane 150', 12" piano bars 96' 12" yellow diagonal 75', 6 each turn arrows
144	Montgomery	Raymond (S End)	IL 127: Int of IL 127 and N 21st Ave (Raymond/Nokomis Blacktop), Stop Bar only	-	-	-	-	-	-	-	12	-	
145	Morgan	Alexander	IL123 Intersection of IL123 and Old US36	-	-	-	-	-	-	-	52	-	
146	Sangamon	Auburn	Curran Rd/Snell Rd int. (1 Stop Bar), Curran Rd/IL 4 int. (1 Stop Bar), Snell Rd/Old Rt 66 Brick int.(1 Stop Bar), Snell Rd/Hambuch Rd/IL 4 Int. (2 stop Bars), (DO NOT STRIPE ON BRICKS)	-	-	-	-	-	-	-	77	-	
147	Sangamon	Buffalo	Old Route 36: Crosswalk at Wells St. (Crosswalk Only)	-	-	-	96	-	96	-	-	-	6" crosswalks, 12" piano bars
148	Sangamon	Cantrall	IL 29: Rail Road Crossing	-	-	-	-	-	-	-	72	122	RR symbol
149	Sangamon	Illiopolis	Dye Rd/ Old RT 36 Int: Stop Bar Only	-	-	-	-	-	-	-	15	-	
150	Sangamon	Illiopolis	Old Route 36: Stop bar at Matilda St. includes skips on W Matilda St. to Dye Rd.	-	40	-	-	-	-	-	22	-	5" skip dash lines

\*PAVEMENT MARKING REMOVAL GRINDING TO BE DETERMINED BY THE ENGINEER ON AN AS NEEDED BASIS

\*D-6 HT PVMNT MRK RPR 23-06

FILE NAME =	USER NAME = rentem	DESIGNED -	REVISED -	<b>STATE OF ILLINOIS DEPARTMENT OF TRANSPORTATION</b>	<b>LOCATIONS</b>				RTE.	SECTION	COUNTY	TOTAL SHEETS	SHEET NO.
S:\CONTRMAINT_CAD\46596 D6 HT PVMNT MRK	RPR 23-06\46596 PLANS\sheet 4-15 Locations	DRAWN -	REVISED -		<b>HOT SPRAY/THERMO #141-150 (MONTGOMERY, MORGAN, SANGAMON)</b>				VAR.	*	VARIOUS	15	14
Default	PLOT SCALE = 2.0000' / in.	CHECKED -	REVISED -		SCALE:	SHEET	OF	SHEETS	STA.	TO	STA.	<b>CONTRACT NO. 46596</b>	
	PLOT DATE = 3/22/2022	DATE -	REVISED -		ILLINOIS FED. AID PROJECT								

CN 46596		THERMOPLASTIC PAVEMENT MARKING		X7800825		X7800835	78000400	78000500	78000600		78000650	78000100	Notes/Comments
Work Order Job #	County	Nearest Town	Location Description	5 INCH HOT SPRAY THERMO	5 INCH HOT SPRAY THERMO	6 INCH HOT SPRAY THERMO	6 INCH THERMO PLASTIC	8 INCH THERMO PLASTIC	12 INCH THERMO PLASTIC	12 INCH THERMO PLASTIC	24 INCH THERMO PLASTIC	LETTERS AND SYMBOLS THERMO PLASTIC	
				WHITE	YELLOW	WHITE	WHITE	WHITE	WHITE	YELLOW	WHITE	WHITE	
151	Sangamon	Pawnee (3.4 MI W)	IL 104 (Near I-55 Exit 82): Frazee Rd, Stop Bar Only	-	-	-	-	-	-	-	32	-	
152	Sangamon	Springfield	Canadian Cross Rd at Southwind Rd Int: 1 Mi N of Toronto Rd, Stop Bars Only (21',21')	-	-	-	-	-	-	-	42	-	
153	Sangamon	Springfield	Canadian Cross Rd (East Leg Only) at 2nd St Int (2mi N of Toronto Rd), Stop Bar Only (25')	-	-	-	-	-	-	-	25	-	
154	Sangamon	Springfield (5 Mi W)	IL 97: 0.3mi N of IL 97/125 Int, Spur from New and Old IL 97, Stop Bar Only	-	-	-	-	-	-	-	30	-	
155	Sangamon	Sherman	IL124/ Andrew Rd: Stop Bar Only	-	-	-	-	-	-	-	25	-	
Sub-Totals				34,455	34,080	5,250	7,074	1,190	5,365	574	2,208	2,795	
<b>Total Quantities</b>				<b>68,535</b>		<b>5,250</b>	<b>7,074</b>	<b>1,190</b>	<b>5,939</b>		<b>2,208</b>	<b>2,795</b>	<b>TOTALS</b>
				X7800825	X7800825	78000400	78000500	78000600		78000650	78000100		

\*PAVEMENT MARKING REMOVAL GRINDING TO BE DETERMINED BY THE ENGINEER ON AN AS NEEDED BASIS

\*D-6 HT PVMNT MRK RPR 23-06

FILE NAME =	USER NAME = rentem	DESIGNED -	REVISED -	<b>STATE OF ILLINOIS DEPARTMENT OF TRANSPORTATION</b>	<b>LOCATIONS HOT SPRAY/THERMO #151-155 (SANGAMON)</b>				RTE.	SECTION	COUNTY	TOTAL SHEETS	SHEET NO.	
S:\CONTRMAINT_CAD\46596 D6 HT PVMNT MRK	RPR 23-06\46596 PLANS\sheet 4-15 Locations	DRAWN -	REVISED -		SCALE:	SHEET	OF	SHEETS	STA.	TO	STA.	VARIOUS	15	15
Default	PLOT SCALE = 2.0000' / in.	CHECKED -	REVISED -		CONTRACT NO. 46596									
	PLOT DATE = 3/22/2022	DATE -	REVISED -		ILLINOIS FED. AID PROJECT									