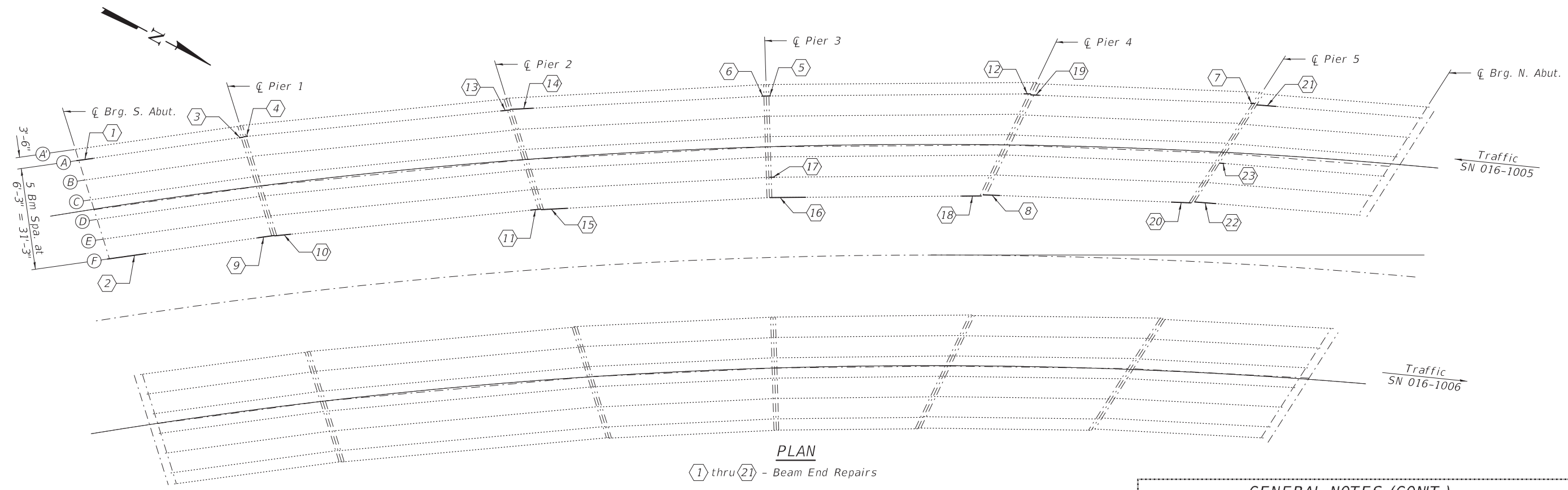


ELEVATION



PLAN

① thru ②① - Beam End Repairs

GENERAL NOTES

All structural steel shall conform to AASHTO Classification M-270 Gr. 36, unless otherwise noted.  
 Plan dimensions and details relative to existing plans are subject to nominal construction variations. The Contractor shall field verify existing dimensions and details affecting new construction and make necessary approved adjustments prior to construction or ordering of materials. Such variations shall not be cause for additional compensation for a change in scope of the work, however, the Contractor will be paid for the quantity actually furnished at the unit price bid for the work.  
 Fasteners shall be high strength bolts. Bolts 3/4"Ø, open holes 1 3/16"Ø, unless otherwise noted.  
 Existing structural steel that will be in contact with new structural steel shall be cleaned and painted prior to erection as required by the special provision "Cleaning and Painting Contact Surface Areas of Existing Steel Structures".  
 Cost of removal and re-installation of all members necessary to complete the work as detailed on the plans and as specified in the Special Provisions shall be included with Structural Steel Repair.  
 All structural steel shall be hot dip galvanized according to Special Provision "Hot Dip Galvanizing for Structural Steel".  
 The existing structural steel coating contains lead. The Contractor shall take appropriate precautions to deal with the presence of lead on this project.

GENERAL NOTES (CON'T.)

Existing diaphragm ends abutting new repair plates shall be trimmed 1/2" where required to clear repair plates.

BILL OF MATERIAL

ITEM	UNIT	QUANTITY
Structural Steel Repair	Pound	9050



Tim's Signature

EXPIRES 11-30-2022

DESIGNED - Chi-Cheung Chau	EXAMINED - <i>Tim A. [Signature]</i>	DATE - JUNE 8, 2022
CHECKED - Jeffrey S. Burke	PASSED - <i>Jayme F. Schiff</i>	REVISD 1 06/23/2022 CCC
DRAWN - daburdell	ENGINEER OF BRIDGES AND STRUCTURES	REVISD 2 07/01/2022 CCC
CHECKED - CCC JSB		

STATE OF ILLINOIS  
DEPARTMENT OF TRANSPORTATION

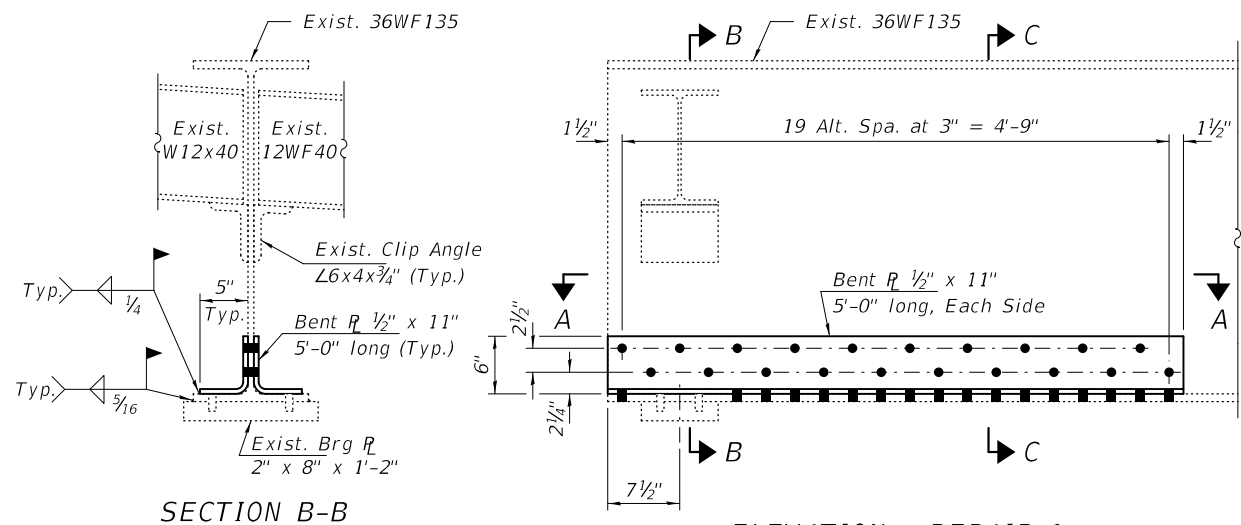
GENERAL PLAN AND ELEVATION  
FAP 372 (IL 171) OVER JOLIET RD & BNSF RR SPUR  
SN 016-1005 (SB)

SHEET NO. 1 OF 9 SHEETS

F.A.P. RTE. 372	SECTION FAP-372-22-BR	COUNTY COOK	TOTAL SHEETS 31	SHEET NO. 4
CONTRACT NO. 62R56				
ILLINOIS FED. AID PROJECT				

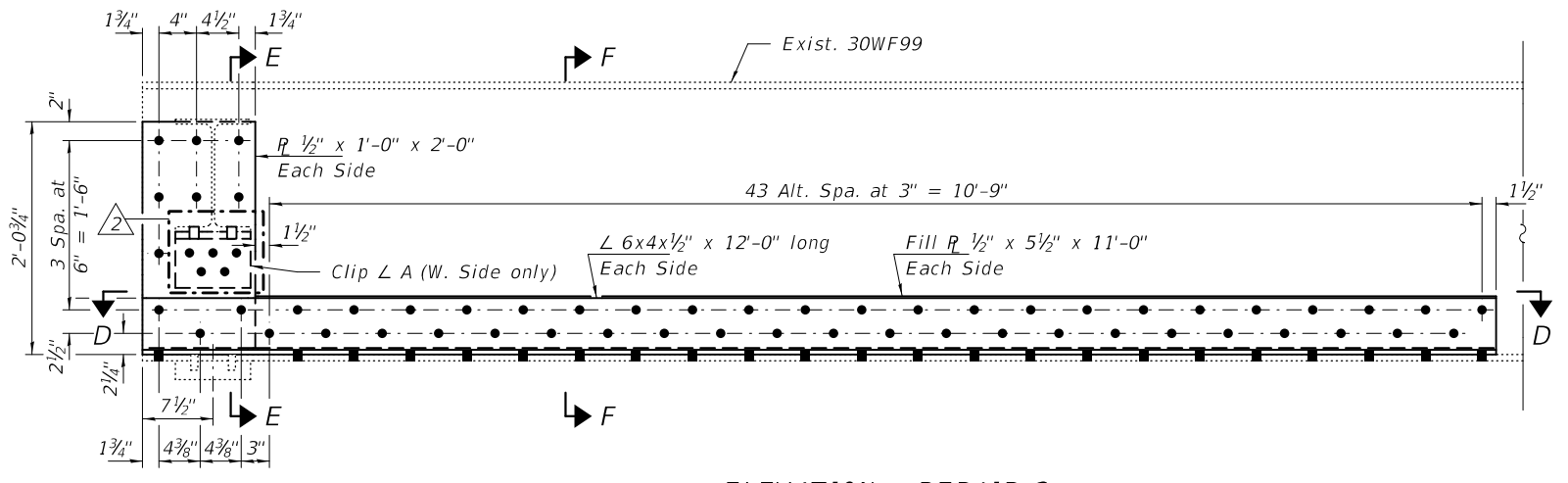
2 REVISD SHEET 7/1/2022

1 REVISD SHEET 6/29/2022

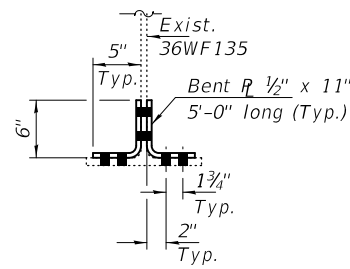


SECTION B-B

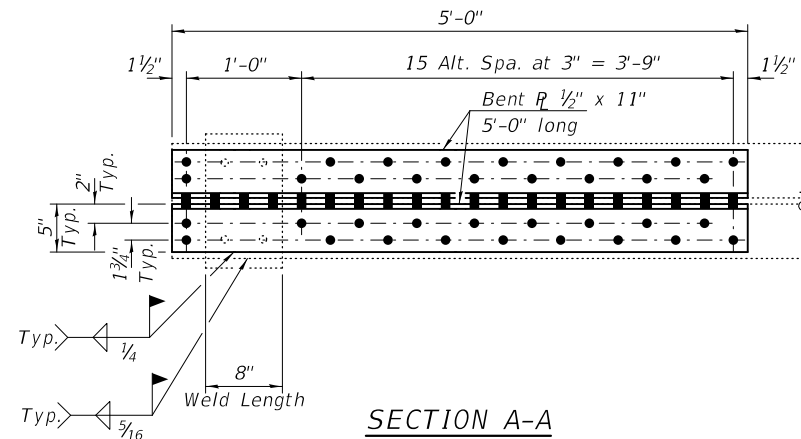
ELEVATION - REPAIR 1  
(Beam A - S. Abut. - Span 1)



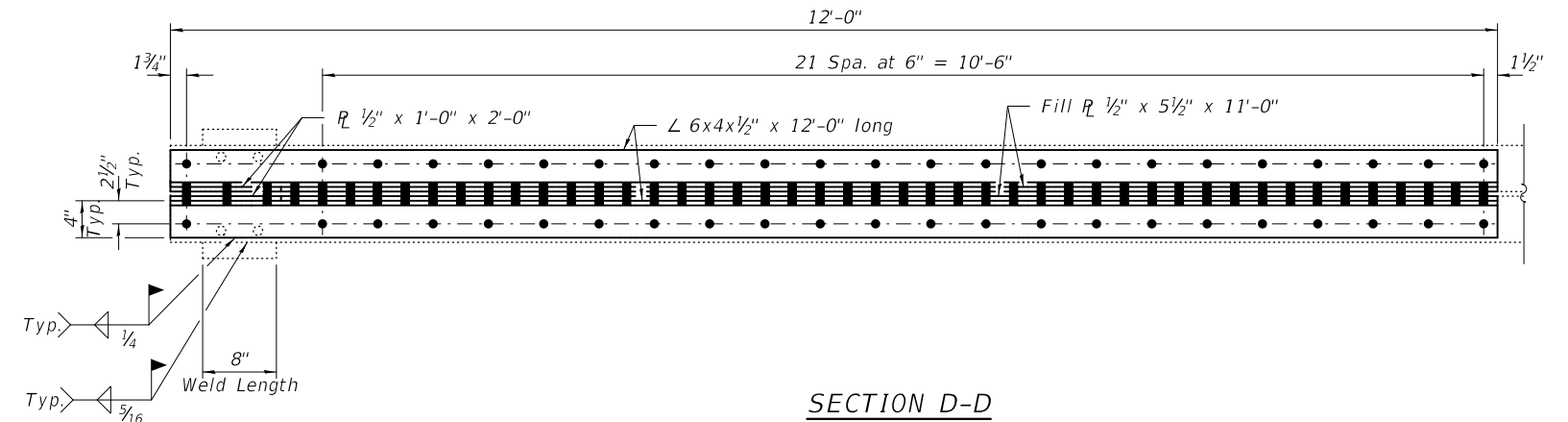
ELEVATION - REPAIR 2  
(Beam F - S. Abut. - Span 1)



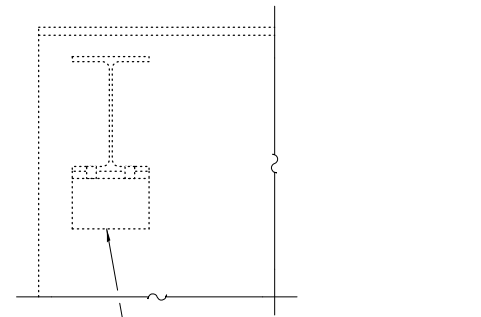
SECTION C-C



SECTION A-A

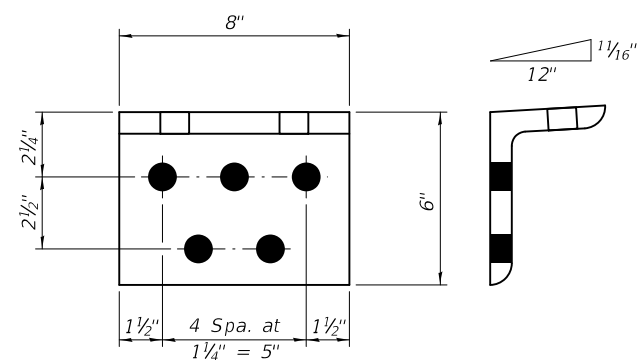


SECTION D-D

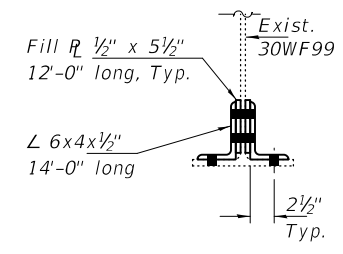


EXISTING CLIP ANGLE REMOVAL DETAIL

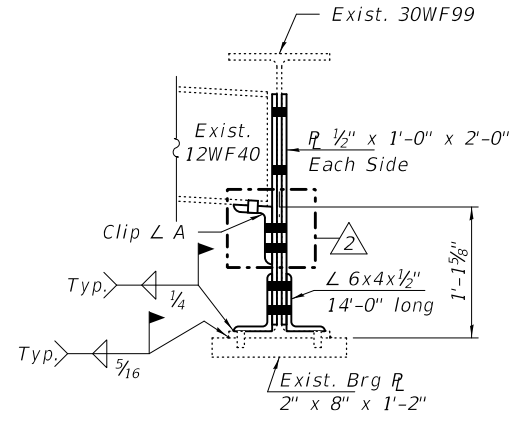
Cost included with Structural Steel Repair.



CLIP L A  
L 6x4x3/4 x 8" long  
(6 Required)



SECTION F-F



SECTION E-E

BOLT HOLE LEGEND

- - Field drill using existing steel as template.
- - Shop drill holes in new steel.

DESIGNED - CCC	EXAMINED - <i>Timothy A. Daburdell</i>
CHECKED - JSB	ENGINEER OF STRUCTURAL SERVICES
DRAWN - <i>daburdell</i>	PASSED - <i>Carl R. Poyner</i>
CHECKED - CCC JSB	ENGINEER OF BRIDGES AND STRUCTURES

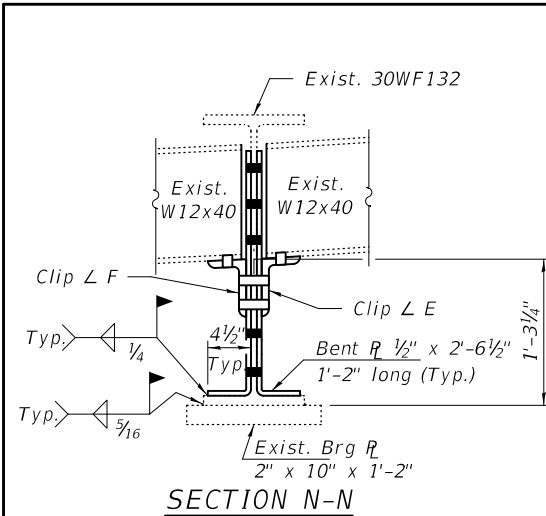
DATE - JUNE 8, 2022
REVISED 2 07/01/2022 CCC
REVISED -

STATE OF ILLINOIS  
DEPARTMENT OF TRANSPORTATION

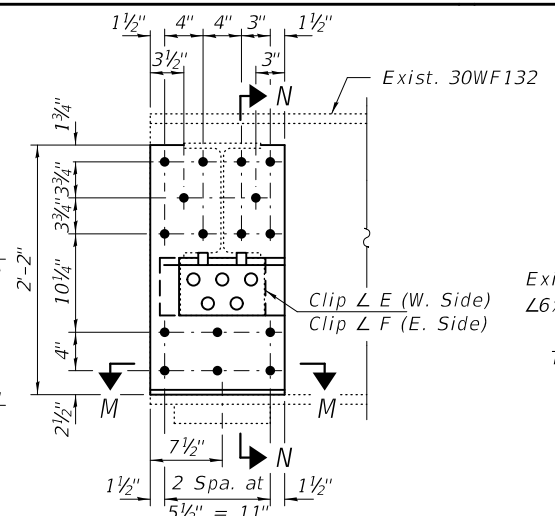
REPAIR DETAILS  
SN 016-1005 (SB)

SHEET NO. 2 OF 9 SHEETS

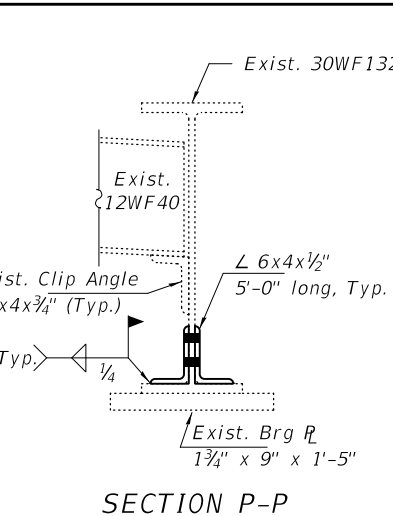
REVISED SHEET 7/1/2022	
F.A.P. RTE. 372	SECTION FAP-372-22-BR
COUNTY COOK	TOTAL SHEETS 31
SHEET NO. 5	CONTRACT NO. 62R56
ILLINOIS FED. AID PROJECT	



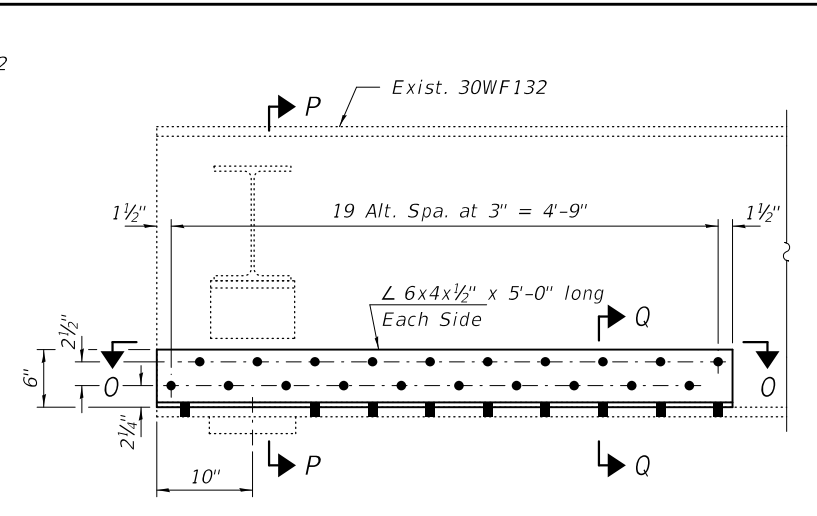
SECTION N-N



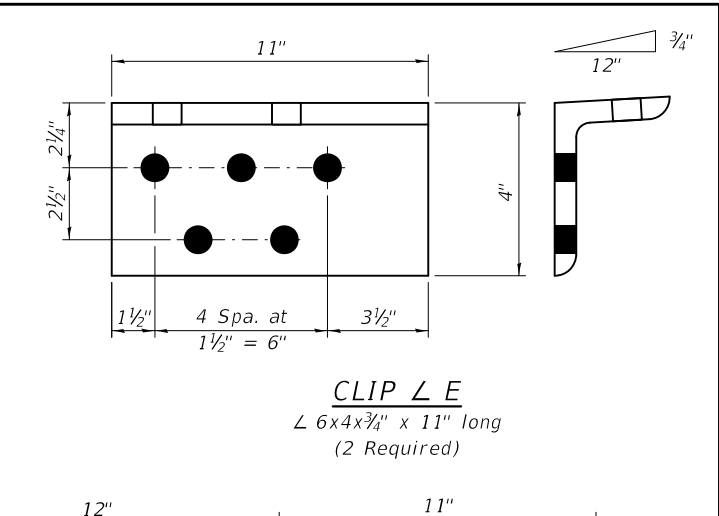
ELEVATION - REPAIR 7  
(Beam A - Pier 5 - Span 5)



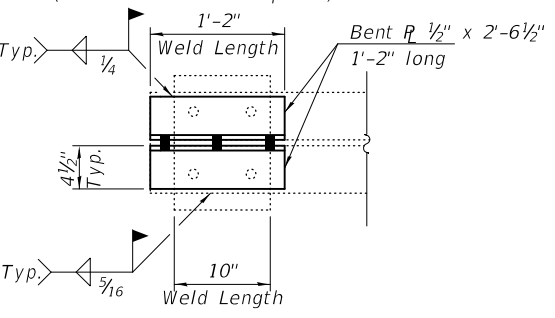
SECTION P-P



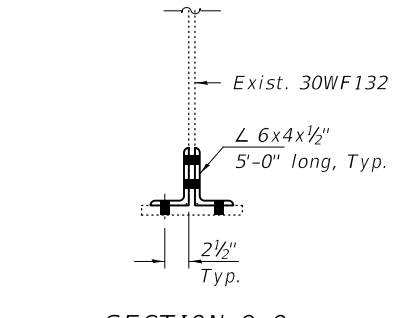
ELEVATION - REPAIR 8  
(Beam F - Pier 4 - Span 5)



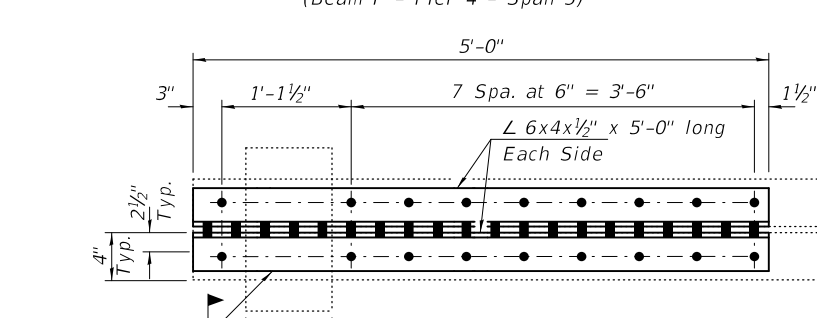
CLIP L E  
L 6x4x3/4\" x 11\" long  
(2 Required)



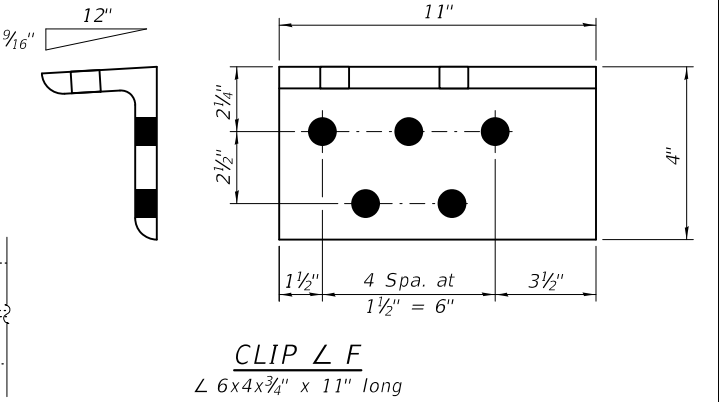
SECTION M-M



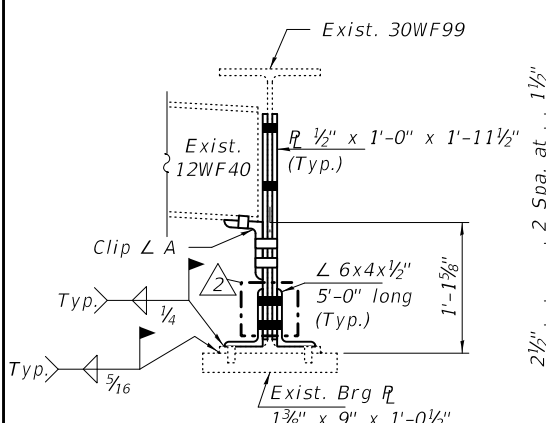
SECTION Q-Q



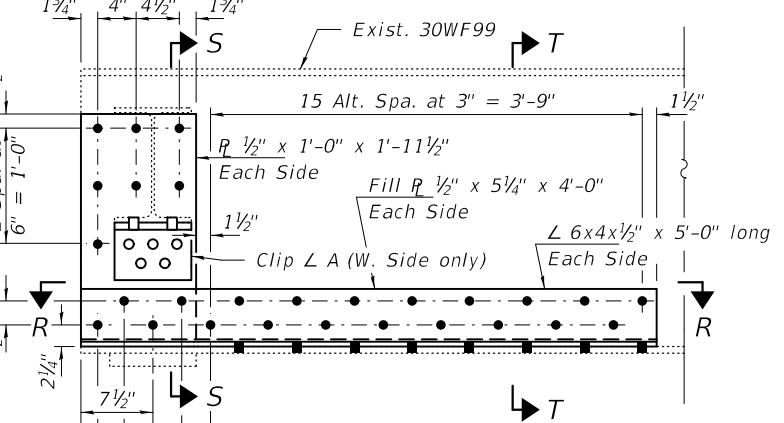
SECTION O-O



CLIP L F  
L 6x4x3/4\" x 11\" long  
(2 Required)



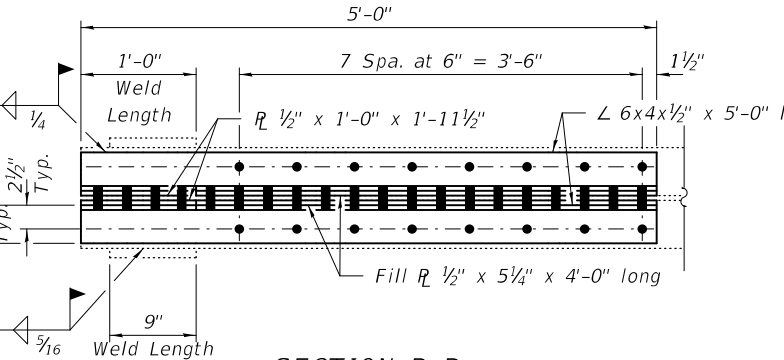
SECTION S-S



ELEVATION - REPAIR 9  
(Beam F - Pier 1 - Span 1)



SECTION T-T



SECTION R-R

Note:  
See sheet 2 of 9 for  
Clip L A details.

**BOLT HOLE LEGEND**

- - Field drill using existing steel as template.
- - Shop drill holes in new steel.

REVISD SHEET 7/1/2022

DESIGNED - CCC	EXAMINED - <i>Timothy A. Daulton</i>
CHECKED - JSB	ENGINEER OF STRUCTURAL SERVICES
DRAWN - daburdell	PASSED - <i>Carl Ringer</i>
CHECKED - CCC JSB	ENGINEER OF BRIDGES AND STRUCTURES

DATE - JUNE 8, 2022
REVISED 2 07/01/2022 CCC
REVISED -

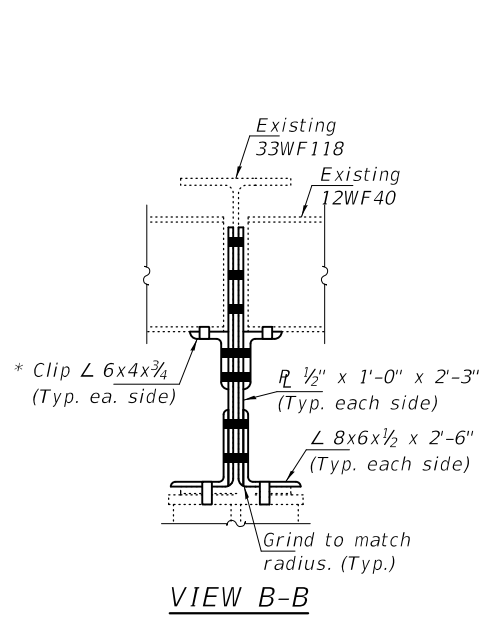
STATE OF ILLINOIS  
DEPARTMENT OF TRANSPORTATION

REPAIR DETAILS  
SN 016-1005 (SB)

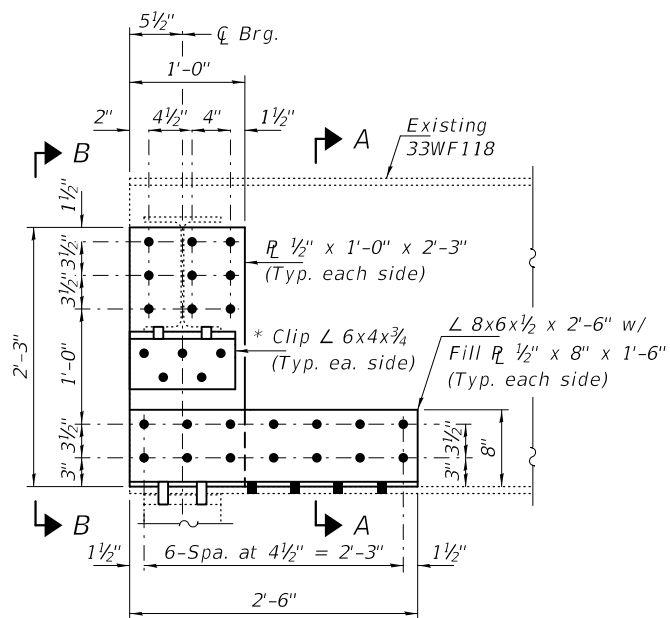
SHEET NO. 4 OF 9 SHEETS

F.A.P. RTE.	SECTION	COUNTY	TOTAL SHEETS	SHEET NO.
372	FAP-372-22-BR	COOK	31	7
CONTRACT NO. 62R56				

ILLINOIS FED. AID PROJECT

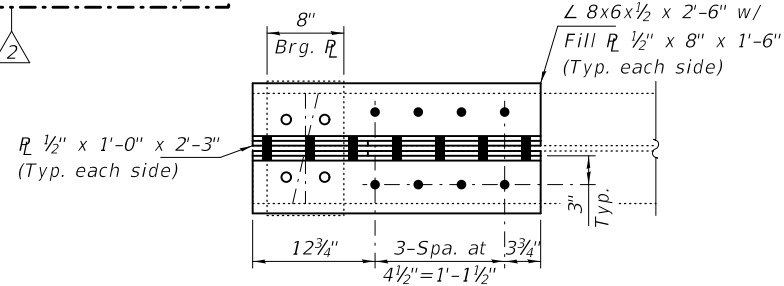


VIEW B-B

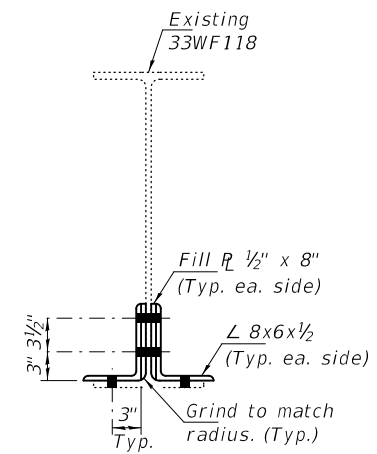


ELEVATION  
BEAM A7 AT S. ABUT.  
(Looking West)

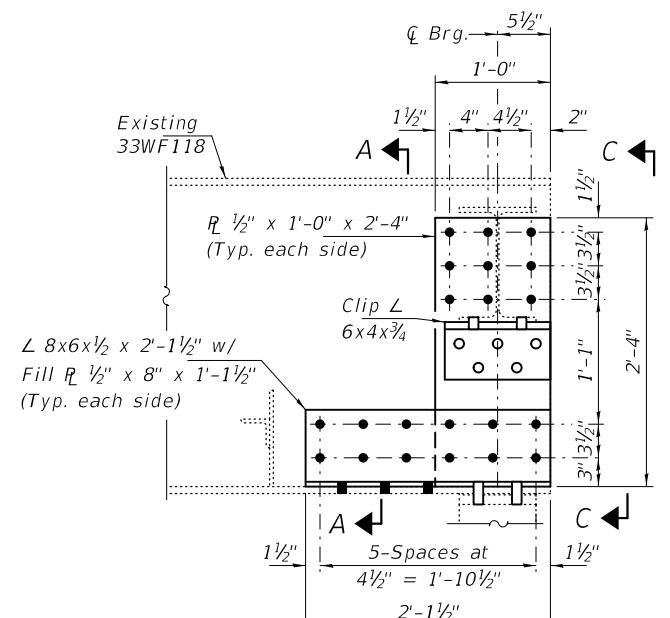
\* Existing Clip L to be removed using the air-arc method and grind smooth all weld material remaining on the web.  
Cost included with Structural Steel Repair.



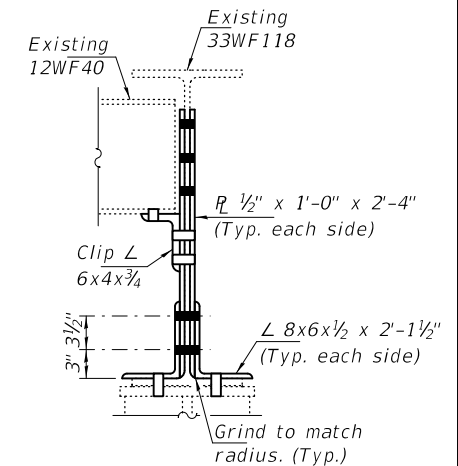
PLAN VIEW  
BEAM A7 AT S. ABUT.



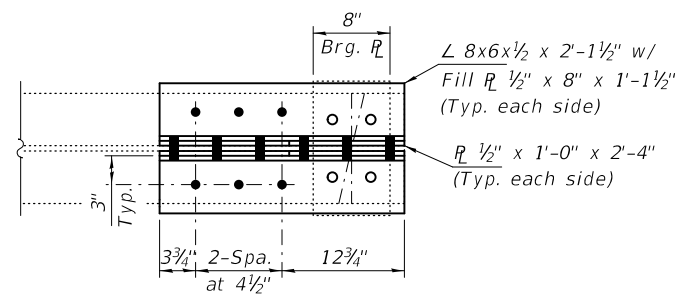
SECTION A-A



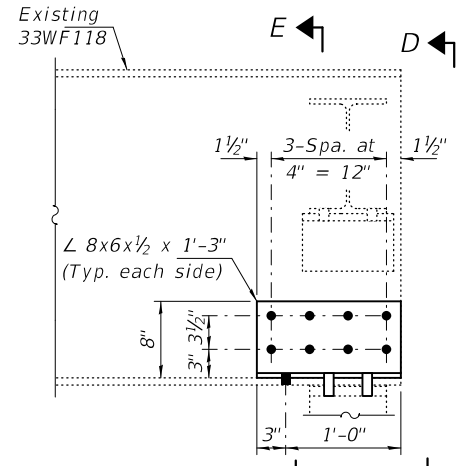
ELEVATION  
BEAM A1 AT PIER 2 - SP. 2  
(Looking West)



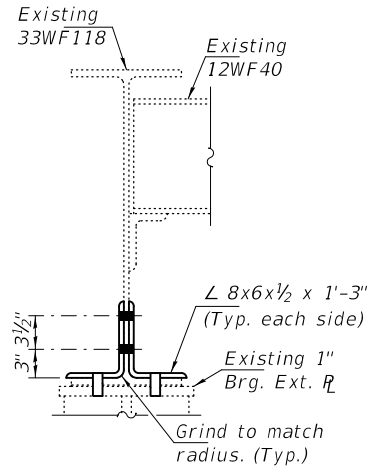
VIEW C-C



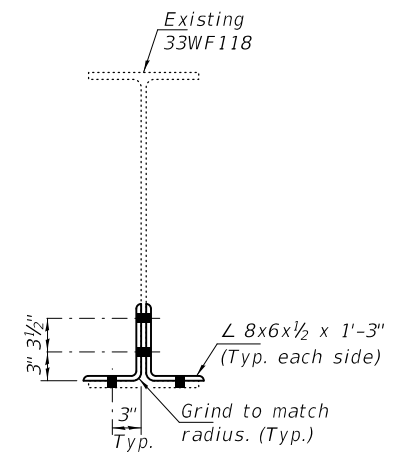
PLAN VIEW  
BEAM A1 AT PIER 2 - SP. 2



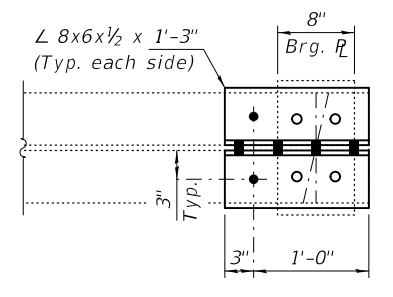
ELEVATION  
BEAM A8 AT PIER 2 - SP. 2  
(Looking West)



VIEW D-D



SECTION E-E



PLAN VIEW  
BEAM A8 AT PIER 2 - SP. 2

**BOLT HOLE LEGEND**

- - Shop Drilled Holes
- - Field Drilled Holes

REVISION 2 REVISED SHEET 7/1/2022

**SOUTH ABUTMENT & PIER 2 - SPAN 2**

DESIGNED - CCC	EXAMINED - <i>Timothy A. [Signature]</i>	DATE - JUNE 9, 2022
CHECKED - JSB	ENGINEER OF STRUCTURAL SERVICES	
DRAWN - STEFFEN	PASSED - <i>Jaime F. [Signature]</i>	REVISION 2 07/01/2022 - CCC
CHECKED - CCC JSB	ENGINEER OF BRIDGES AND STRUCTURES	REVISION -

STATE OF ILLINOIS  
DEPARTMENT OF TRANSPORTATION

STRUCTURAL STEEL REPAIR DETAILS  
SN 016-0486 (S.B.)

F.A.P. RTE. 372/373	SECTION FAP-372-22-BR	COUNTY COOK	TOTAL SHEETS 31	SHEET NO. 21
CONTRACT NO. 62R56			ILLINOIS FED. AID PROJECT	

SHEET NO. 2 OF 9 SHEETS