

STATE OF ILLINOIS
DEPARTMENT OF TRANSPORTATION

**
*265+3 = 268 TOTAL SHEETS
**268+8 = 276

F.A.I. RTE.	SECTION	COUNTY	TOTAL SHEETS	SHEET NO.
55	2014-079 RS, BR&T	WILL/DUPAGE/COOK	265	1
ILLINOIS			CONTRACT NO. 60Y65	

D-91-448-14



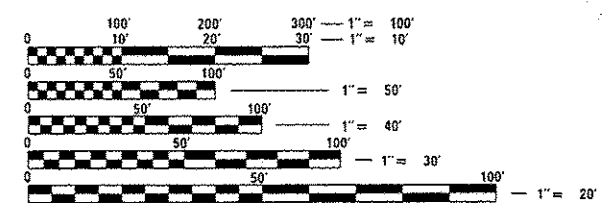
FOR INDEX OF SHEETS, SEE SHEET NO. 3

THE PROJECT IS LOCATED IN THE VILLAGES OF BOLINGBROOK, WOODRIDGE, ROMEOVILLE, DARIAN, BURR RIDGE, WILLOWBROOK, AND CITY OF CHICAGO

PROPOSED HIGHWAY PLANS
F.A.I. ROUTE 55 (INTERSTATE 55)
WEBER RD. TO WILLOW SPRINGS RD.
AND EAST OF PULASKI RD.
SECTION: 2014-079RS, BR&T
RESURFACING, BRIDGE DECK REPAIRS,
BRIDGE JOINT REPAIRS, DRAINAGE IMPROVEMENTS
AND FIBER OPTIC INSTALLATION
PROJECT: ACNHPP-0055(455)
DUPAGE/WILL/COOK COUNTY
C-91-448-14

RESURFACING OMMISIONS:
BRIDGE PCC SURFACES AT
STA.208+73.7 TO STA.211+14.6
STA.299+37.2 TO STA.302+07.8
STA.410+73.3 TO STA.413+90.1
STA.639+01.5 TO STA.641+33.7

TRAFFIC DATA:
2015 ADT - 165,100
POSTED SPEED
LIMIT = 55 MPH



FULL SIZE PLANS HAVE BEEN PREPARED USING STANDARD ENGINEERING SCALES. REDUCED SIZED PLANS WILL NOT CONFORM TO STANDARD SCALES. IN MAKING MEASUREMENTS ON REDUCED PLANS, THE ABOVE SCALES MAY BE USED.

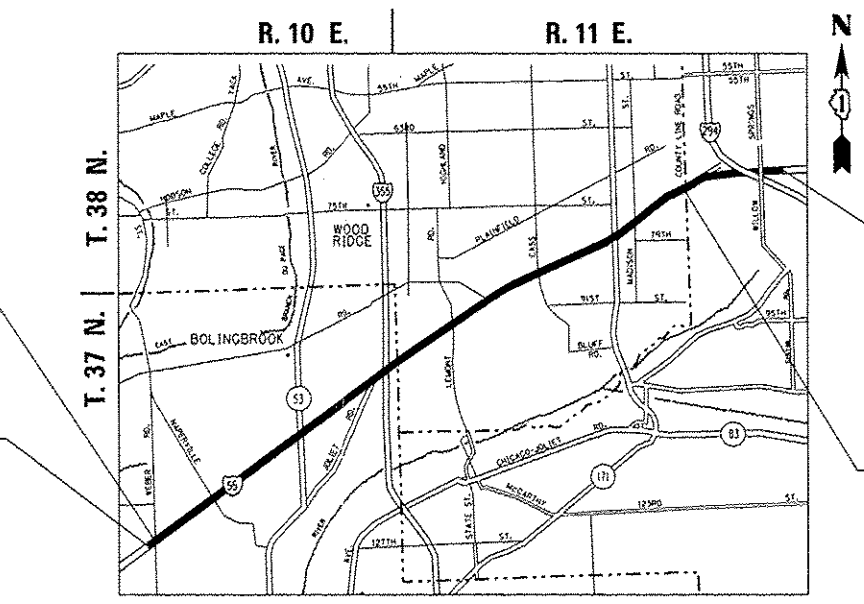
J.U.L.I.E.
JOINT UTILITY LOCATION INFORMATION FOR EXCAVATION
1-800-892-0123 OR 811
C.U.A.N.
CHICAGO UTILITY ALERT NETWORK
(312) 744-7000

ROADWAY PROJECT BEGINS
STA. 19+00.5

ELECTRICAL WORK BEGINS
STA. 10+00

ELECTRICAL WORK ENDS
STA. 797+70

ROADWAY PROJECT ENDS
STA. 713+92.8



DUPAGE, DOWNERS GROVE, LYONS, & SOUTH CHICAGO TOWNSHIPS

PROJECT ENGINEER: KARI SMITH (847) 705-4437
PROJECT MANAGER: FAWAD AQUEEL (847) 705-4247

CONTRACT NO. 60Y65

GROSS AND NET LENGTH OF PROJECT = 78,770 FT = 14.9 MI

STATE OF ILLINOIS
DEPARTMENT OF TRANSPORTATION
SUBMITTED *May 23 2016*
John Fortmann
REGIONAL ENGINEER
July 1 2016
Maureen M. Addis, P.E.
ENGINEER OF DESIGN AND ENVIRONMENT
July 1 2016
Omer Osman, P.E.
DIRECTOR OF HIGHWAYS, CHIEF ENGINEER

PRINTED BY THE AUTHORITY
OF THE STATE OF ILLINOIS

Rev. 7-20-16

STATE STANDARDS

GENERAL NOTES

INDEX OF SHEETS

SHEET NO.	DESCRIPTION
1	COVER SHEET
2	DRAINAGE IMPROVEMENTS LOCATION MAPS
3	INDEX OF SHEETS, STATE STANDARDS, AND GENERAL NOTES
4 - 14	SUMMARY OF QUANTITIES
15 - 17	TYPICAL SECTIONS
18	SCHEDULES OF QUANTITIES
19-21	SEQUENCE OF OPERATIONS
22	ROADWAY PLAN SHEETS SCHEMATIC
* 23-60	ROADWAY AND PAVEMENT MARKING PLANS
61-67	BRIDGE DECK REPAIR PLANS
68-70	DETOUR PLANS
71-113	EXISTING DRAINAGE DETAILS (FOR PROPOSED CLEANING)
114-125	DRAINAGE PLANS
126- 168	LANDSCAPING PLANS
169-253	ELECTRICAL PLANS
254A	DRIVEWAY DETAILS - DISTANCE BETWEEN R.O.W. AND FACE OF CURB & EDGE OF SHOULDER $\geq 15'$ (4.5 m) (BD-01)
254B	DRIVEWAY DETAILS - DISTANCE BETWEEN ROW AND FACE OF CURB $< 15'$ (4.5 m) (BD-02)
254C	PAVEMENT PATCHING FOR HMA SURFACED PAVEMENT (BD-22)
255	BUTT JOINT AND HMA TAPER DETAILS (BD-32)
256	FREEWAY ENTRANCE AND EXIT RAMP CLOSURE DETAILS (TC-08)
257	TRAFFIC CONTROL DETAILS FOR FREEWAY SINGLE AND MULTI-LANE WEAVE (TC-09)
258	TYPICAL APPLICATION FOR RAISED REFLECTIVE PAVEMENT MARKERS (SNOW-PLOW RESISTANT) (TC-11)
259-260	MULTI-LANE FREEWAY PAVEMENT MARKING DETAIL (TC-12)
261	DISTRICT ONE TYPICAL PAVEMENT MARKINGS (TC-13)
262	PAVEMENT MARKING--LETTERS AND SYMBOLS FOR TRAFFIC STAGING (TC-16)
263	TRAFFIC CONTROL DETAILS FOR FREEWAY SHOULDER CLOSURES AND PARTIAL RAMP CLOSURES (TC-17)
264	FREEWAY/EXPRESSWAY SIGNING FOR FLAGGING OPERATIONS AT WORK ZONE OPENINGS ON FREEWAYS/EXPRESSWAYS (TC-18)
265	ARTERIAL ROAD INFORMATION SIGNING (TC-22)

* INCLUDES SHEET 52A.

**** Added Sheets**
 17A, 17B., 21A., 52B., 52C.,
 125A. - 125C.

000001-06	STANDARD SYMBOLS, ABBREVIATIONS AND PATTERNS
280001-07	TEMPORARY EROSION CONTROL SYSTEMS
420001-08	PAVEMENT JOINTS
442201-03	CLASS C AND D PATCHES
482011-03	HMA SHOULDER STRIPS/ SHOULDER WITH RESURFACING OR WIDENING AND RESURFACING PROJECTS
542001-06	CONCRETE END SECTIONS FOR PIPE CULVERTS 15" (375 mm) THRU 84" (2100 mm) DIA.
542011-02	CONCRETE END SECTIONS FOR ELLIPTICAL PIPE CULVERTS 15" (375 mm) THRU 72" (1800 mm) EQUIVALENT DIAMETER
542201-02	REINFORCED CONCRETE END SECTIONS FOR PIPE CULVERTS 15" (375 mm) THRU 36" (900 mm) DIA. SKEWED WITH ROADWAY
542301-03	PRECAST REINFORCED CONCRETE FLARED END SECTION
542306-03	PRECAST REINFORCED CONCRETE ELLIPTICAL FLARED END SECTION
542311-06	TRAVERSABLE PIPE GRATE
542546-01	FLUSH INLET BOX FOR MEDIAN
602001-02	CATCH BASIN TYPE A
602301-04	INLET - TYPE A
602401-03	MANHOLE TYPE A
602601-04	PRECAST REINFORCED CONCRETE FLAT SLAB TOP
604001-04	FRAME AND LIDS TYPE 1
604036-03	GRATE TYPE B
604041-03	FRAME AND GRATE TYPE 9
606401-02	PAVED DITCH
630301-06	SHOULDER WIDENING FOR TYPE 1 (SPECIAL) GUARDRAIL TERMINALS
635001-02	DELINEATORS
642001-02	SHOULDER RUMBLE STRIPS, 16 IN.
701001-02	OFF-RD OPERATIONS, 2L, 2W, MORE THAN 15' (4.5 m) AWAY
701101-05	OFF-RD OPERATIONS, MULTILANE, 15' (4.5 m) TO 24" (600 mm) FROM PAVEMENT EDGE
701400-08	APPROACH TO LANE CLOSURE, FREEWAY/EXPRESSWAY
701401-09	LANE CLOSURE, FREEWAY/EXPRESSWAY
701411-09	LANE CLOSURE, MULTILANE, AT ENTRANCE OR EXIT RAMP, FOR SPEEDS ≥ 45 MPH
701428-01	TRAFFIC CONTROL SETUP AND REMOVAL FREEWAY/EXPRESSWAY
701446-07	TWO LANE CLOSURE FREEWAY/EXPRESSWAY
701501-06	URBAN LANE CLOSURE, 2L, 2W, UNDIVIDED
701801-06	SIDEWALK, CORNER OR CROSSWALK CLOSURE
701901-05	TRAFFIC CONTROL DEVICES
720006-04	SIGN PANEL ERECTION DETAILS
728001-01	TELESCOPING STEEL SIGN SUPPORT
729001-01	APPLICATIONS OF TYPES A & B METAL POSTS (FOR SIGNS & MARKERS)
780001-05	TYPICAL PAVEMENT MARKINGS

- BEFORE STARTING ANY EXCAVATION, THE CONTRACTOR SHALL CALL "J.U.L.I.E." AT 1-800-892-0123 FOR FIELD LOCATIONS OF BURIED ELECTRIC, TELEPHONE, AND GAS FACILITIES. (48 HOURS NOTIFICATION IS REQUIRED).
- THE CONTRACTOR SHALL COORDINATE CONSTRUCTION ACTIVITIES WITH UTILITY COMPANIES AND THE CITY OF CHICAGO AND THE VILLAGES OF BOLINGBROOK, WOODRIDGE, ROMEVILLE, DARIAN, BURR RIDGE, AND WILLOWBROOK.
- THE CONTRACTOR WILL NOT BE ALLOWED TO SET UP A YARD OR FIELD OFFICE ON STATE PROPERTY WITHOUT WRITTEN PERMISSION FROM THE DEPARTMENT.
- BUTT JOINTS WILL BE INSTALLED AT THE ENDS OF ALL RESURFACING (WHERE RESURFACING MEETS EXISTING PAVEMENT), IN ACCORDANCE WITH THE "BUTT JOINT AND HMA TAPER DETAILS" SHEET INCLUDED IN THE PLANS, UNLESS OTHERWISE SPECIFIED.
- PERMANENT PAVEMENT MARKINGS SHALL BE THERMOPLASTIC (OF THE EXTRUDED TYPE) AND SHOULD BE PLACED IN ACCORDANCE WITH THE "DISTRICT ONE TYPICAL PAVEMENT MARKINGS" DETAIL (TC-13) AND MULTI-LANE FREEWAY PAVEMENT MARKING DETAILS (TC-12).
- RAISED REFLECTIVE PAVEMENT MARKERS SHALL BE IN ACCORDANCE WITH THE DISTRICT ONE "TYPICAL APPLICATION RAISED REFLECTIVE PAVEMENT MARKERS DETAIL."
- ALL DAMAGE TO EXISTING PAVEMENT MARKINGS OR RAISED REFLECTIVE PAVEMENT OUTSIDE THE REMOVAL LINE SHOWN ON THE PLANS SHALL BE PLACED AT NO ADDITIONAL COST TO THE DEPARTMENT.
- IT SHALL BE THE CONTRACTOR'S RESPONSIBILITY TO VERIFY ALL DIMENSIONS AND CONDITIONS EXISTING IN THE FIELD PRIOR TO CONSTRUCTION AND ORDERING OF MATERIALS.
- THE RESIDENT ENGINEER SHALL VERIFY THE LOCATIONS OF ALL EXISTING PAVEMENT MARKINGS, PAVEMENT PATCHING, OR DRAINAGE ADJUSTMENT PRIOR TO MILLING OR RESURFACING.
- THE RESIDENT ENGINEER SHALL CONTACT THE EXPRESSWAY FIELD ENGINEER AT (847) 705-4153 TWO WEEKS PRIOR TO PLACEMENT OF PERMANENT PAVEMENT MARKINGS.
- THE RESIDENT ENGINEER SHALL CONTACT THE EXPRESSWAY TRAFFIC CONTROL SUPERVISOR AT (847) 705-4155 A MINIMUM OF 72 HOURS PRIOR TO THE INSTALLATION OF ANY TEMPORARY TRAFFIC CONTROL DEVICES.
- WHEN MILLED PAVEMENT IS OPEN TO TRAFFIC, THE MAXIMUM GRADE DIFFERENTIAL BETWEEN PASSES OF THE MILLING MACHINE SHALL NOT EXCEED 1 1/2 INCHES WHERE THE SPEED LIMIT IS 45 MPH. WITH WRITTEN APPROVAL FROM THE RESIDENT ENGINEER, A MAXIMUM GRADE DIFFERENTIAL OF 3 INCHES MAY BE ALLOWED IF THE EDGE OF THE MILLING IS SLOPED A MINIMUM OF 1V:3H.
- ON THE MAINLINE, TEMPORARY PAVEMENT MARKING SHALL BE EPOXY PAVEMENT MARKING ON THE MILLED SURFACE AND TYPE 3 ON THE BINDER. TEMPORARY PAVEMENT MARKING SHALL NOT BE USED ON THE SURFACE COURSE. EPOXY PAVEMENT MARKING ON THE MILLED SURFACE DOES NOT NEED TO BE REMOVED.
- THE LOCATION OF ALL DRAINAGE STRUCTURES AND STORM SEWERS TO BE CLEANED SHALL BE DETERMINED IN THE FIELD BY THE RESIDENT ENGINEER. EXISTING DRAINAGE PLANS HAVE BEEN INCLUDED IN THIS CONTRACT FOR INFORMATION ONLY.
- THE ENGINEER SHALL REPORT CLEARANCES UNDER THE BRIDGE AFTER RESURFACING.

16. ADDITIONAL PROPOSED HMA RUMBLE STRIPS OUTSIDE OF THE PLAN RESURFACING LIMITS, BETWEEN EAST OF COUNTY LINE ROAD AND WILLOW SPRINGS ROAD, SHALL BE INSTALLED AT SPECIFIC LOCATIONS AS DIRECTED BY THE RESIDENT ENGINEER.

COMMITMENTS:
 ALL EXTRA EXCAVATED SOIL SHALL BE PLACED WITHIN IDOT RIGHT-OF-WAY, WITHIN PROJECT LIMITS.

Rev. 7-20-16

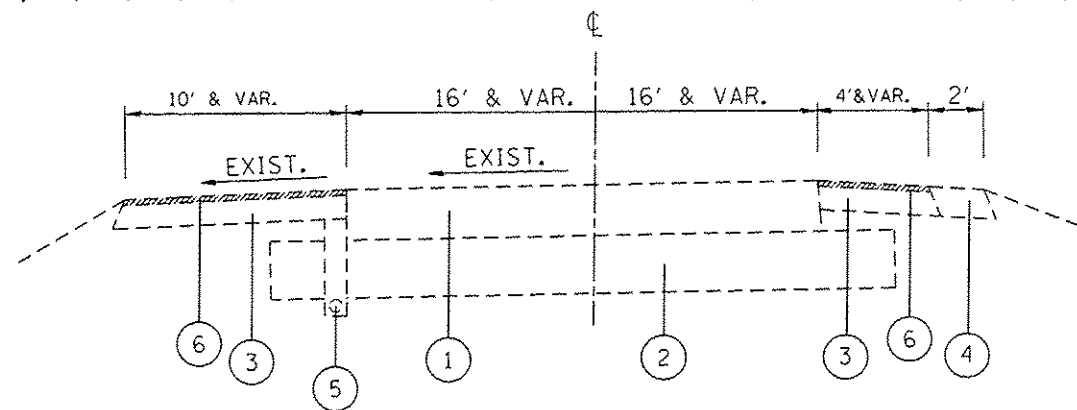
FILE NAME :	USER NAME :	DESIGNED :	REVISED :	STATE OF ILLINOIS DEPARTMENT OF TRANSPORTATION	INDEX OF SHEETS, STATE STANDARDS AND GENERAL NOTES	F.A.I. RTE. :	SECTION :	COUNTY :	TOTAL SHEETS :	SHEET NO. :	
pu:\NL004EBIDINTEG\111nois.gov\PIDOT\00	paragoneal	ORAMA	REVISED :			55	2014-079 RS, BR&T	WILL/DUPAGE	265	3	
			CHECKED :			CONTRACT NO. 60Y65					
			REVISED :			ILLINOIS FEB. AID PROJECT					
PLOT SCALE :	PLOT DATE :	DATE :	REVISED :	SCALE :	SHEET NO. OF SHEETS :	STA. TO STA. :					
100.0000' / in.	6/17/2016										

SUMMARY OF QUANTITIES			CONSTRUCTION TYPE CODE																					
CODE NO	ITEM	UNIT	TOTAL QUANTITIES	0005 90% FED 10% STATE ROADWAY WILL	0005 90% FED 10% STATE ROADWAY DUPAGE	0005 90% FED 10% STATE ROADWAY COOK	0014 90% FED 10% STATE BRIDGE 1-55 OVER IL55	0014 90% FED 10% STATE BRIDGE 1-55 OVER JOLIET RD	0021 90% FED 10% STATE ELECTRICAL WILL	0021 90% FED 10% STATE ELECTRICAL DUPAGE	0021 90% FED 10% STATE ELECTRICAL COOK	0044 90% FED 10% STATE DRAINAGE IMPROVEMENT DUPAGE	0044 90% FED 10% STATE DRAINAGE IMPROVEMENT COOK	0031 90% FED 10% STATE WEED SPRAYING WILL	0031 90% FED 10% STATE WEED SPRAYING DUPAGE	0031 90% FED 10% STATE WEED SPRAYING COOK								
25100630	EROSION CONTROL BLANKET	SQ YD	377									344	33											
25200200	SUPPLEMENTAL WATERING	UNIT	1.72									1.72												
28000305	TEMPORARY DITCH CHECKS	FOOT	140									140												
28000400	PERIMETER EROSION BARRIER	FOOT	100									100												
28000510	INLET FILTERS	EACH	3									3												
28100107	STONE RIPRAP, CLASS A4	SQ YD	47									47												
28200200	FILTER FABRIC	SQ YD	47									47												
40600290	BITUMINOUS MATERIALS (TACK COAT)	POUND	668846	275576	372405	20895																		
40600400	MIXTURE FOR CRACKS, JOINTS, AND FLANGEWAYS	TON	1520	645	828	47																		
40600827	POLYMERIZED LEVELING BINDER (MACHINE METHOD), IL-4.75, NSO	TON	6267	1376	4044	847																		
40600982	HOT-MIX ASPHALT SURFACE REMOVAL - BUTT JOINT	SQ YD	1004	497	429	78																		
40600985	PORTLAND CEMENT CONCRETE SURFACE REMOVAL - BUTT JOINT	SQ YD	1437	1437																				
40601005	HOT-MIX ASPHALT REPLACEMENT OVER PATCHES	TON	8765	1292	6983	490																		
40603085	HOT-MIX ASPHALT BINDER COURSE, IL-19.0, N70	TON	23,547	9610	13596	341																		

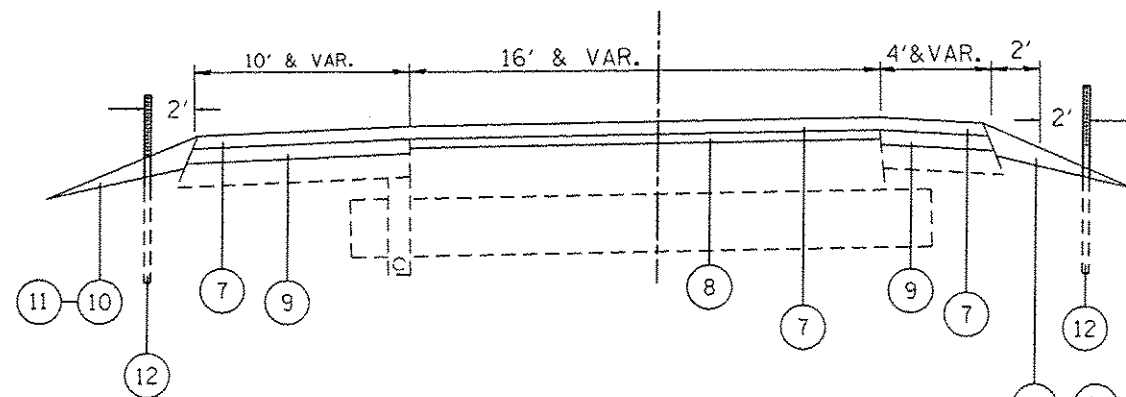
Rev. 7-20-2016

SUMMARY OF QUANTITIES				CONSTRUCTION TYPE CODE																			
CODE NO	ITEM	UNIT	TOTAL QUANTITIES	0005 90% FED 10% STATE ROADWAY WILL	0005 90% FED 10% STATE ROADWAY DUPAGE	0005 90% FED 10% STATE ROADWAY COOK	0014 90% FED 10% STATE BRIDGE 1-55 OVER IL53	0014 90% FED 10% STATE BRIDGE 1-55 OVER JOLIET RD	0021 90% FED 10% STATE ELECTRICAL WILL	0021 90% FED 10% STATE ELECTRICAL DUPAGE	0021 90% FED 10% STATE ELECTRICAL COOK	0044 90% FED 10% STATE DRAINAGE IMPROVEMENT DUPAGE	0044 90% FED 10% STATE DRAINAGE IMPROVEMENT COOK	0031 90% FED 10% STATE WEED SPRAYING WILL	0031 90% FED 10% STATE WEED SPRAYING DUPAGE	0031 90% FED 10% STATE WEED SPRAYING COOK							
Z0064600	SELECTIVE CLEARING	ACRE	5												2	2	1						
① Z0038120	PORTLAND CEMENT CONCRETE SURFACE REMOVAL 1 3/4"	SQ YD	1084	1084																			
X1400178	REPLACE EXISTING CCTV CAMERA	EACH	12							10	2												
	LOWERING DEVICE																						
① XZ043900	PREFORMED JOINT FILLER REMOVAL	FOOT	4117	4117																			
X1400179	CLOSED CIRCUIT DOME TELEVISION CAMERA, HD	EACH	12							10	2												

① REV. 7-20-16



EXISTING TYPICAL SECTION FOR PCC RAMPS
BY IL RTE 53 AT I-55



PROPOSED TYPICAL SECTION FOR PCC RAMPS
BY IL RTE 53 AT I-55

LEGEND (SPECIFICALLY FOR THE PCC RAMPS BY I-55 OVER IL RTE 53)

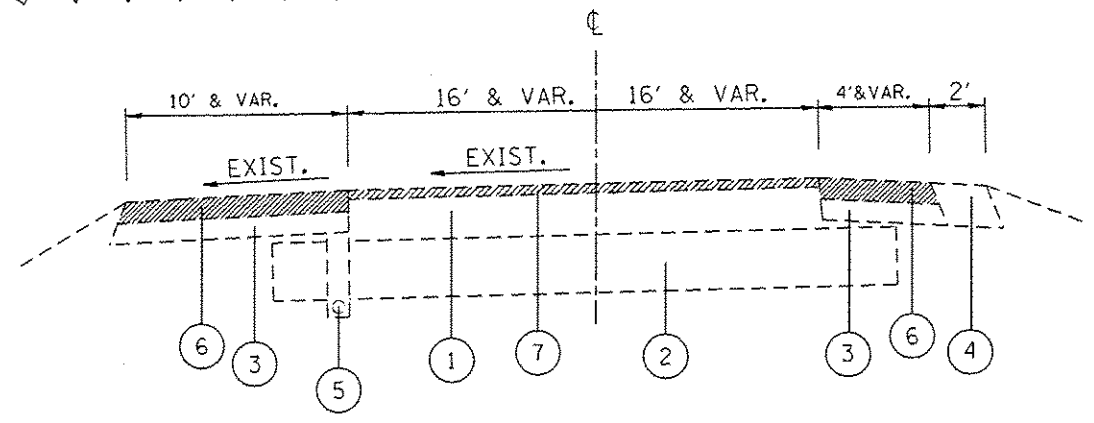
- ① EXISTING P.C.C. PAVEMENT, 10"
- ② EXISTING AGGREGATE SUBGRADE, 12"
- ③ EXISTING HMA SHOULDER, 10"
- ④ EXISTING AGGREGATE SHOULDER TYPE "B"
- ⑤ EXISTING PIPE UNDERDRAIN
- ⑥ PROPOSED HMA SURFACE REMOVAL, 1/4" (RAMP HMA SHOULDER)
- ⑦ PROPOSED POLYMERIZED HMA SURFACE COURSE, MIX. "E", N70, 1 3/4"
- ⑧ PROPOSED POLYMERIZED LEVELING BINDER, IL-4.75, N50, 1"
- ⑨ PROPOSED POLYMERIZED LEVELING BINDER, IL-4.75, N50, 1 1/4"
- ⑩ PROPOSED AGGREGATE WEDGE SHOULDER, TYPE "B"
- ⑪ PROPOSED GRADING AND SHAPING SHOULDER
- ⑫ PROPOSED DELINEATORS



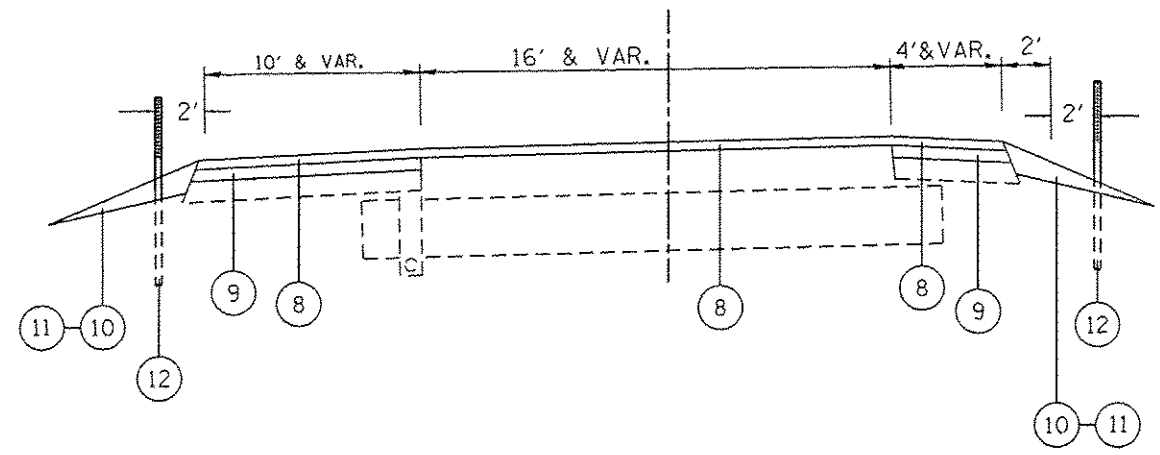
NOTE:

- ON SECTIONS OF THE PCC RAMPS WHERE CURB AND GUTTER IS ENCOUNTERED, DISTRICT DETAIL BD-33 SHALL APPLY.
- DELINEATORS SHALL BE INSTALLED ALONG ALL RAMPS PROPOSED TO BE RESURFACED ACCORDING TO STANDARD 635001.
- CLASS D PATCH LOCATIONS ON THE PCC RAMP TO WITH PROPOSED WORK SHALL BE DETERMINED BY THE RESIDENT ENGINEER.

FILE NAME *	USER NAME = p...gnol	DESIGNED -	REVISED - AP 7/11/2016	STATE OF ILLINOIS DEPARTMENT OF TRANSPORTATION	IL. ROUTE 55 TYPICAL SECTION FOR PCC RAMPS	F.A.I. RTE:	SECTION	COUNTY	TOTAL SHEETS	SHEET NO.
...	...	CHECKED -	REVISED -			55	2014-079 RS, BR&T	WILL/DUPAGE	265	17A
...	...	DATE -	REVISED -			CONTRACT NO. 60Y65		ILLINOIS FED. AID PROJECT		
PLOT SCALE = 1/8" = 100.0000' / 1"		PLOT DATE = 7/12/2016	SCALE:	SHEET NO. 1 OF 1 SHEETS	STA.	TO STA.				



EXISTING TYPICAL SECTION FOR IL 53 PCC RAMPS
BY PAINTED GORE AREA OF I-55 MAINLINE



PROPOSED TYPICAL SECTION FOR IL 53 PCC RAMPS
BY PAINTED GORE AREA OF I-55 MAINLINE

LEGEND (SPECIFICALLY FOR THE IL 53 PCC RAMPS
BY PAINTED GORE AREA OF I-55)

- ① EXISTING P.C.C. PAVEMENT, 10"
- ② EXISTING AGGREGATE SUBGRADE, 12"
- ③ EXISTING HMA SHOULDER, 10"
- ④ EXISTING AGGREGATE SHOULDER TYPE "B"
- ⑤ EXISTING PIPE UNDERDRAIN
- ⑥ PROPOSED HMA SURFACE REMOVAL, 4" (RAMP HMA SHOULDER)
- ⑦ PROPOSED P.C.C. SURFACE REMOVAL, 1 3/4"
- ⑧ PROPOSED POLYMERIZED HMA SURFACE COURSE, MIX. "E", N70, 1 3/4"
- ⑨ PROPOSED HMA BINDER COURSE, IL-19, N70, 2 1/4"
- ⑩ PROPOSED AGGREGATE WEDGE SHOULDER, TYPE "B"
- ⑪ PROPOSED GRADING AND SHAPING SHOULDER
- ⑫ PROPOSED DELINEATORS

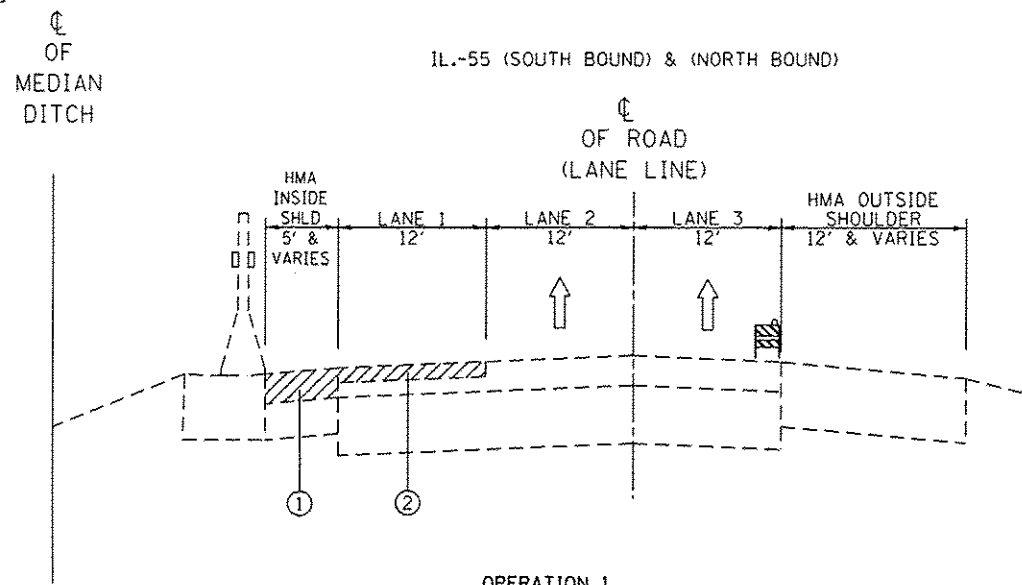


NOTE:

- ON SECTIONS OF THE PCC RAMPS WHERE CURB AND GUTTER IS ENCOUNTERED, DISTRICT DETAIL BD-33 SHALL APPLY.
- DELINEATORS SHALL BE INSTALLED ALONG ALL RAMPS PROPOSED TO BE RESURFACED ACCORDING TO STANDARD 635001.
- CLASS D PATCH LOCATIONS ON THE PCC RAMP TO WITH PROPOSED WORK SHALL BE DETERMINED BY THE RESIDENT ENGINEER.

FILE NAME :	USER NAME :	DESIGNED :	REVISOR :	STATE OF ILLINOIS DEPARTMENT OF TRANSPORTATION	IL. ROUTE 55 TYPICAL SECTION FOR PCC RAMPS	F.A.I. RTE.	SECTION	COUNTY	TOTAL SHEETS	SHEET NO.
p:\11\110848\BID\INTEG\Illinois.gov\WIDOT\Documents\1007\Offices\District 1\Projects\01448\Drawings\Design\0144814-shr-plan.dgn	perapool	AP 7/11/2016	AP 7/11/2016			55	2014-079 RS, BR&T	WILL/DUPAGE	265	17B
PLOT SCALE :	CHECKED :	REVISOR :	REVISOR :	SCALE:	SHEET NO. 1 OF 1 SHEETS	STA.	TO STA.	CONTRACT NO. 60Y65		
PLOT DATE :	DATE :	REVISOR :	REVISOR :	ILLINOIS FED. AID PROJECT						

NOTE: BEFORE OPERATION 1, PATCHING WORK SHALL BE DONE BEFORE MILLING

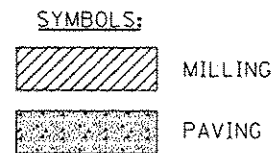


OPERATION 1

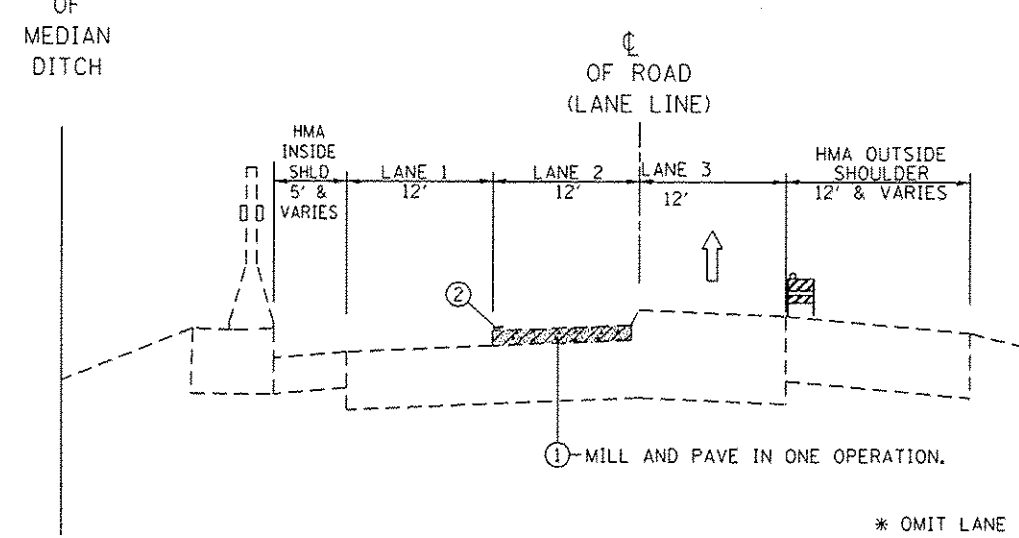
- ① EXIST. HMA SURFACE REMOVAL, 4"
- ② EXIST. HMA SURFACE REMOVAL, 2"

NOTE:

- * 1. GRADE DIFFERENTIAL BETWEEN LANES SHALL NOT EXCEED 2".
- 2. BARRICADES/DRUMS TO BE PLACED ON THE SHOULDER WITHIN 2' OF THE EDGE OF THE PAVEMENT DURING NON-WORKING HOURS.
- 3. PROPOSED HMA LONGITUDINAL JOINT SEALANT SHALL BE APPLIED ON THE ROADWAY AS DESCRIBED IN THE SPECIAL PROVISIONS.



IL.-55 (SOUTH BOUND) & (NORTH BOUND)

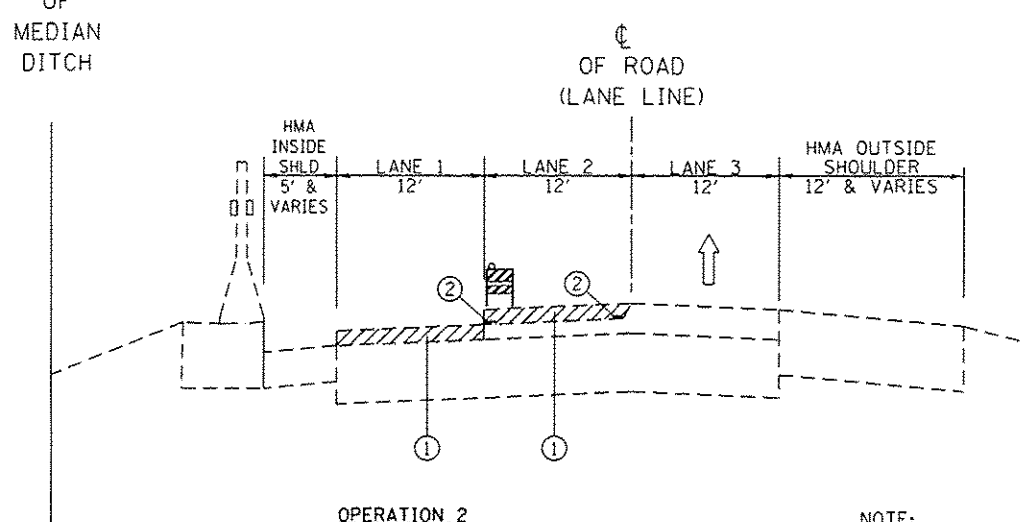


OPERATION 3

- ① EXIST. HMA SURFACE REMOVAL, 2" / PROP. POLY. HMA BINDER COURSE, SMA, N80, 2"
- ② WET REFLECTIVE TEMPORARY TAPE TYPE III, 5" LANE LINE (SKIP-DASH)

* OMIT LANE 3 WHEN IN A 2 LANE SECTION

IL.-55 (SOUTH BOUND) & (NORTH BOUND)



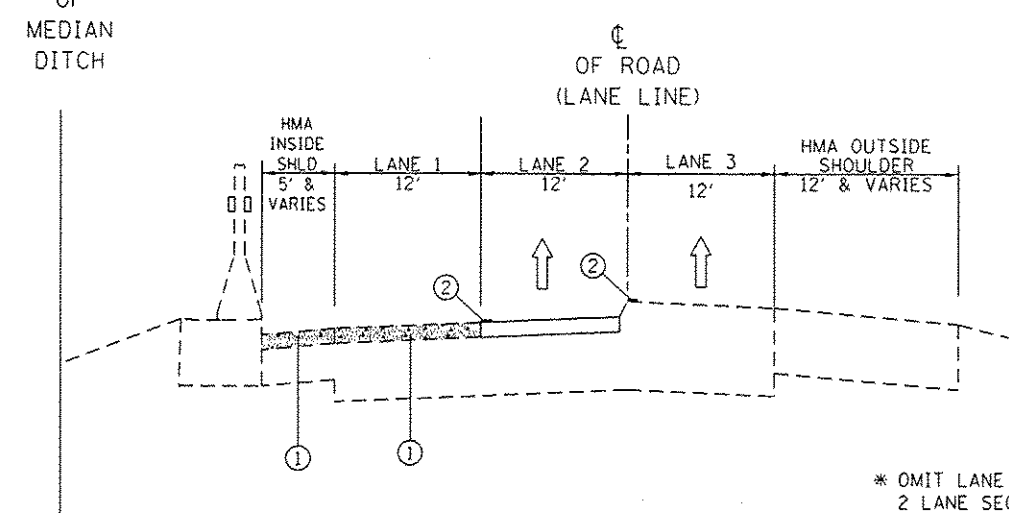
OPERATION 2

- ① EXIST. HMA SURFACE REMOVAL, 2"
- ② EPOXY PAVEMENT MARKING, 5" LANE LINE (SKIP-DASH)

NOTE:

- * 1. GRADE DIFFERENTIAL BETWEEN LANES SHALL NOT EXCEED 2".
- 2. BARRICADES/DRUMS TO BE PLACED ON THE SHOULDER WITHIN 2' OF THE EDGE OF THE PAVEMENT DURING NON-WORKING HOURS.
- 3. PROPOSED HMA LONGITUDINAL JOINT SEALANT SHALL BE APPLIED ON THE ROADWAY AS DESCRIBED IN THE SPECIAL PROVISIONS.

IL.-55 (SOUTH BOUND) & (NORTH BOUND)



OPERATION 4

- ① PROP. POLY. HMA BINDER COURSE, SMA, N80, 2"
- ② WET REFLECTIVE TEMPORARY TAPE TYPE III, 5" LANE LINE (SKIP-DASH)

* OMIT LANE 3 WHEN IN A 2 LANE SECTION
 ** LANE 1 MILLING OPERATIONS SHALL BE PERFORMED CONCURRENTLY TO LANE 1 SMA PAVING OPERATIONS.

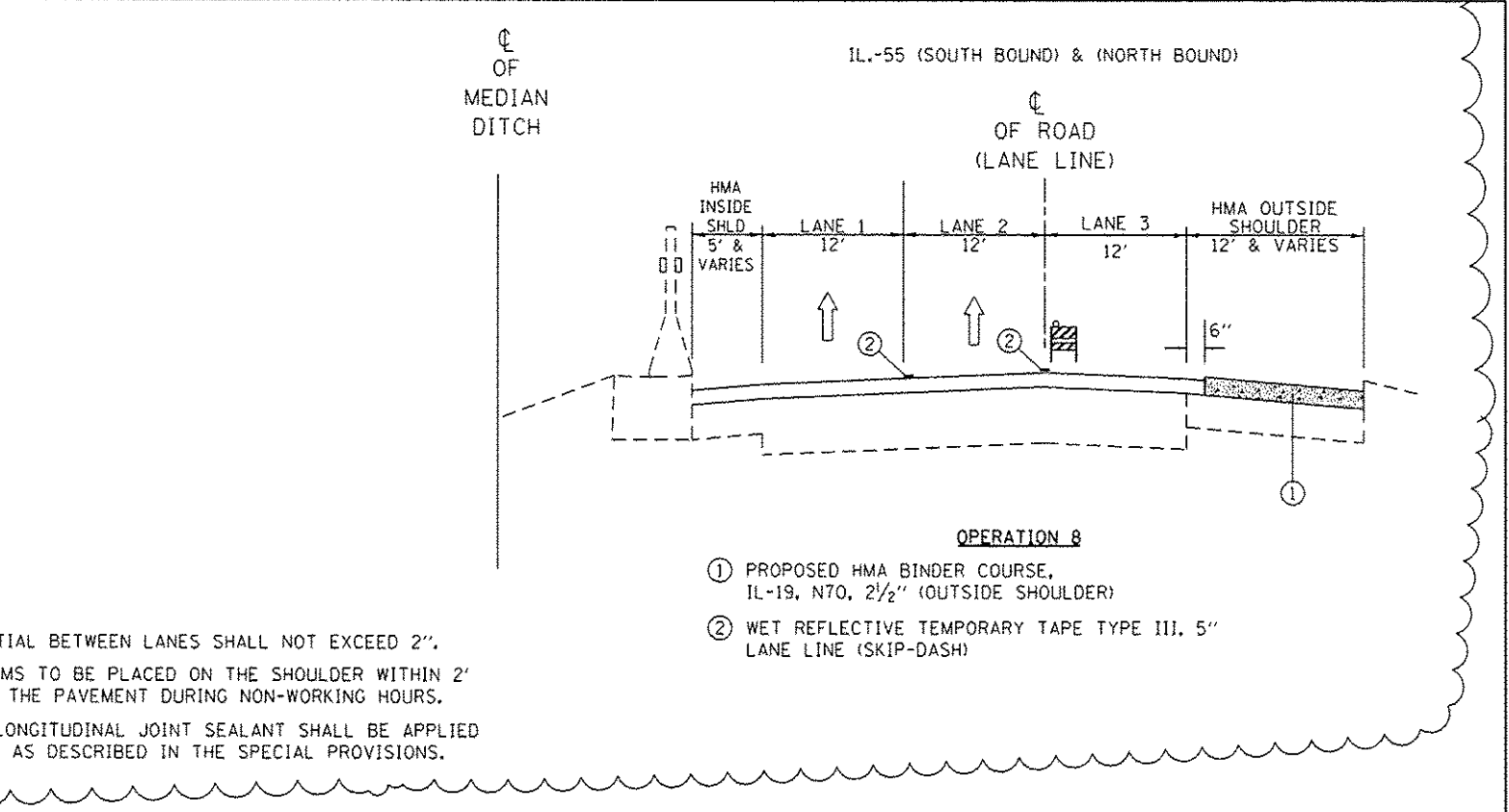
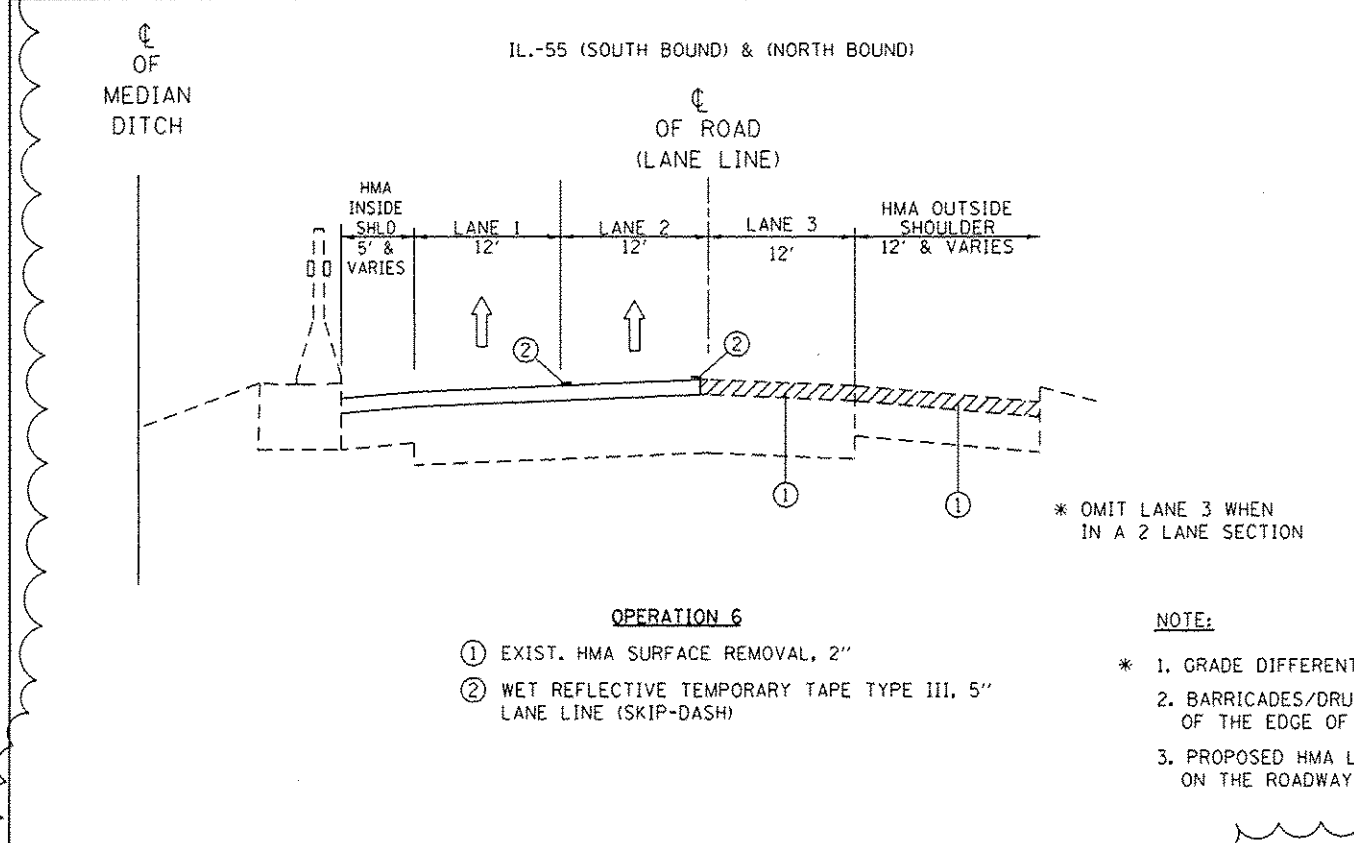
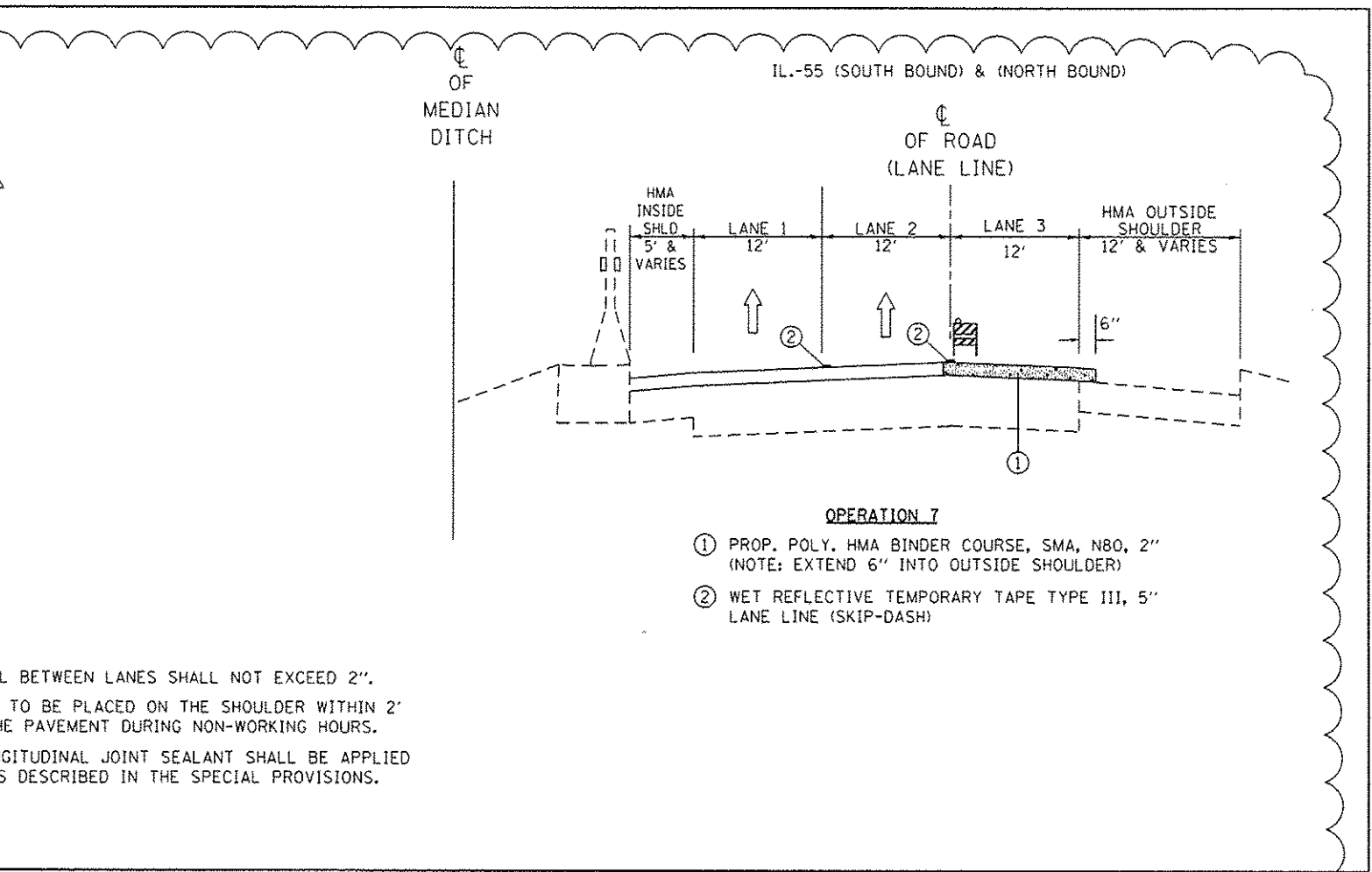
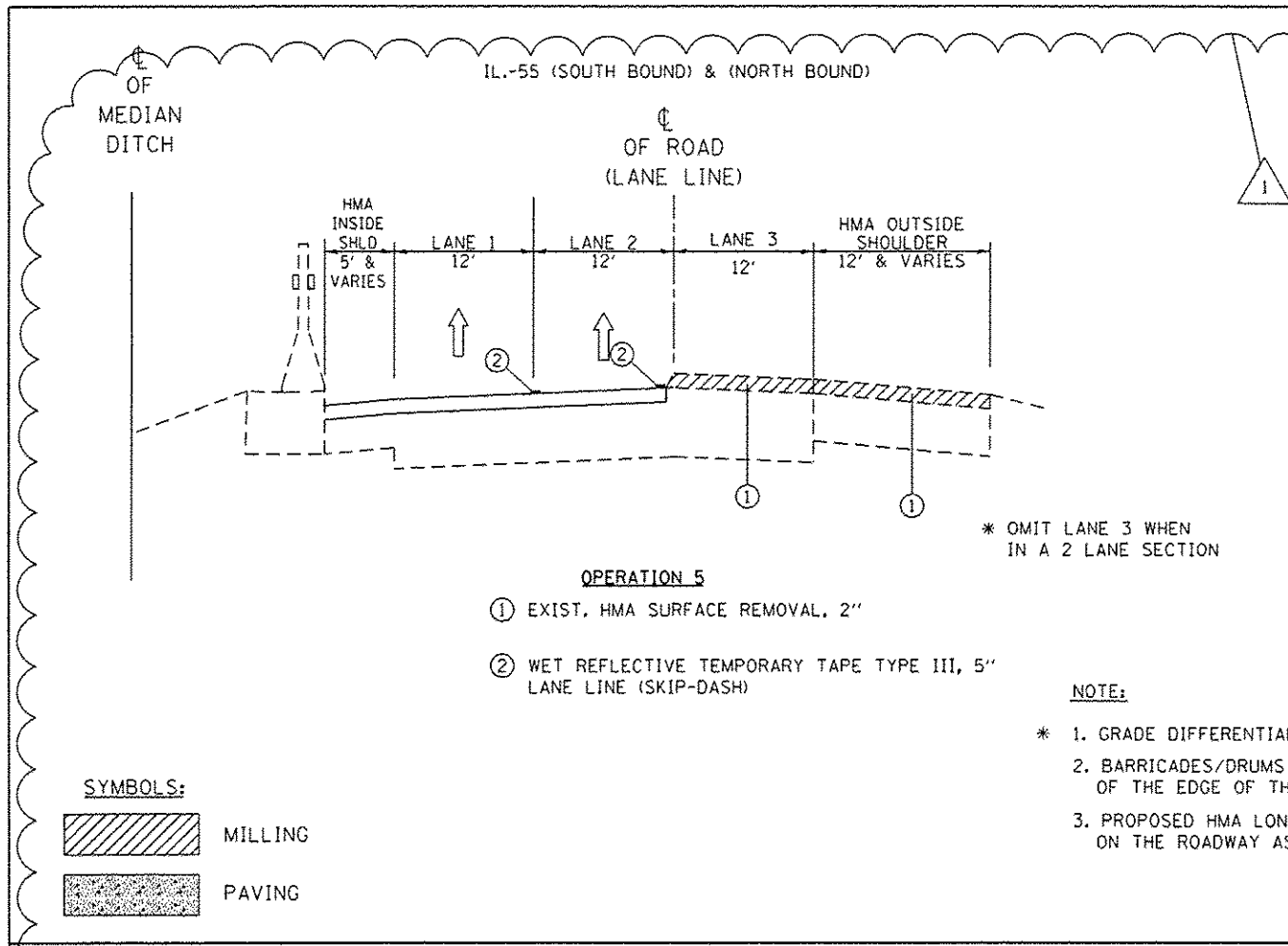
FILE NAME *	USER NAME = pargymol	DESIGNED -	REVISED - AP 7/11/2016
p:\IL084EBID\TEC\Illinois\paw\1001\Documents\DOT Offices\District 1\Projects\01448\Drawings\Design\0144814-ehs-plot.dgn		CHECKED -	REVISED -
PLOT SCALE = 100.0000 / in.		DATE -	REVISED -
PLOT DATE = 7/12/2016			

STATE OF ILLINOIS
 DEPARTMENT OF TRANSPORTATION

IL. ROUTE 55
 SUGGESTED SEQUENCE OF OPERATIONS

SCALE: SHEET NO. 1 OF 1 SHEETS STA. TO STA.

F.A.I. RTE.	SECTION	COUNTY	TOTAL SHEETS	SHEET NO.
55	2014-079 RS, BR&T	WILL/DP/COOK	265	19
CONTRACT NO. 60Y65			ILLINOIS REG. #10 PROJECT	



FILE NAME =	USER NAME = perrygool	DESIGNED -	REVISED - 7/11/2016
p:\11084EBIDINTEG\Illinois.gov\PIDOT\Documents\1007 Offices\District 1\Projects\01448\BRW\Notes\Design\0144814-shr-plan.dgn		CHECKED -	REVISED -
		DATE -	REVISED -

STATE OF ILLINOIS
DEPARTMENT OF TRANSPORTATION

IL. ROUTE 55
SUGGESTED SEQUENCE OF OPERATIONS

SCALE: SHEET NO. 1 OF 1 SHEETS STA. TO STA.

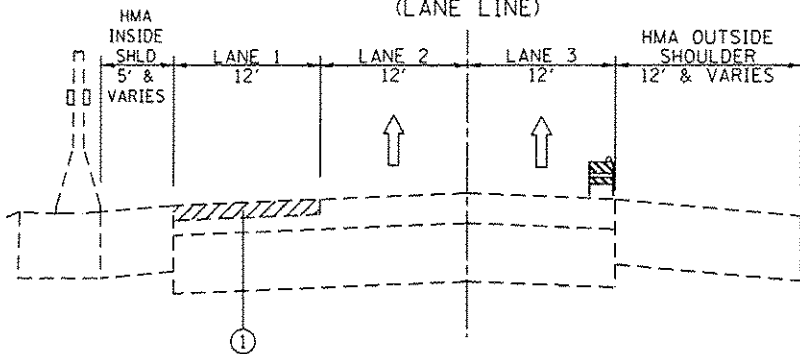
F.R.T. RTE.	SECTION	COUNTY	TOTAL SHEETS	SHEET NO.
55	2014-079 RS, BR&T	WILL/DP/COOK	265	20
CONTRACT NO. 60Y65				
[ILLINOIS] FED. AID PROJECT				

NOTE: BEFORE OPERATION 1, PATCHING WORK SHALL BE DONE BEFORE MILLING

☐ OF
MEDIAN
DITCH

IL.-55 (SOUTH BOUND) & (NORTH BOUND)

☐ OF ROAD
(LANE LINE)



(BUS ON SHOULDER)
OPERATION 1

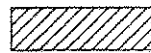
STA. 19+00.5 TO STA. 341+91

① EXIST. HMA SURFACE REMOVAL, 2"

NOTE:

- * 1. GRADE DIFFERENTIAL BETWEEN LANES SHALL NOT EXCEED 2".
- 2. BARRICADES/DRUMS TO BE PLACED ON THE SHOULDER WITHIN 2' OF THE EDGE OF THE PAVEMENT DURING NON-WORKING HOURS.
- 3. PROPOSED HMA LONGITUDINAL JOINT SEALANT SHALL BE APPLIED ON THE ROADWAY AS DESCRIBED IN THE SPECIAL PROVISIONS.

SYMBOLS:



MILLING

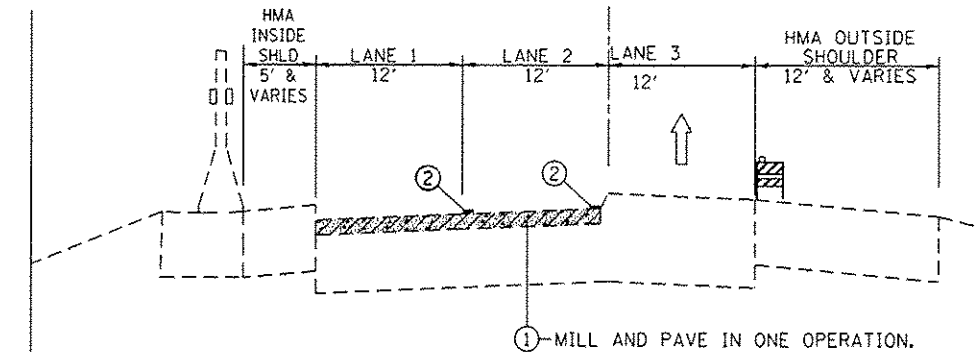


PAVING

☐ OF
MEDIAN
DITCH

IL.-55 (SOUTH BOUND) & (NORTH BOUND)

☐ OF ROAD
(LANE LINE)



(BUS ON SHOULDER)
OPERATION 3

STA. 19+00.5 TO STA. 341+91

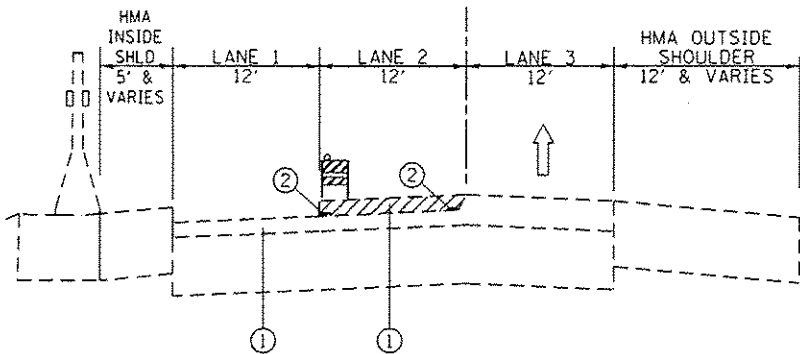
- ① EXIST. HMA SURFACE REMOVAL, 2" / PROP. POLY. HMA BINDER COURSE, SMA, N80, 2"
- ② WET REFLECTIVE TEMPORARY TAPE TYPE III, 5" LANE LINE (SKIP-DASH)

* OMIT LANE 3 WHEN
IN A 2 LANE SECTION

☐ OF
MEDIAN
DITCH

IL.-55 (SOUTH BOUND) & (NORTH BOUND)

☐ OF ROAD
(LANE LINE)



(BUS ON SHOULDER)
OPERATION 2

STA. 19+00.5 TO STA. 341+91

- ① EXIST. HMA SURFACE REMOVAL, 2"
- ② EPOXY PAVEMENT MARKING, 5" LANE LINE (SKIP-DASH)

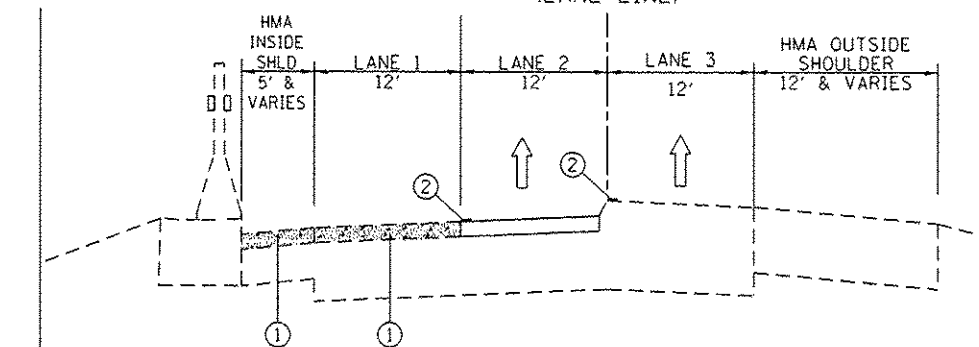
NOTE:

- * 1. GRADE DIFFERENTIAL BETWEEN LANES SHALL NOT EXCEED 2".
- 2. BARRICADES/DRUMS TO BE PLACED ON THE SHOULDER WITHIN 2' OF THE EDGE OF THE PAVEMENT DURING NON-WORKING HOURS.
- 3. PROPOSED HMA LONGITUDINAL JOINT SEALANT SHALL BE APPLIED ON THE ROADWAY AS DESCRIBED IN THE SPECIAL PROVISIONS.

☐ OF
MEDIAN
DITCH

IL.-55 (SOUTH BOUND) & (NORTH BOUND)

☐ OF ROAD
(LANE LINE)



(BUS ON SHOULDER)
OPERATION 4

STA. 19+00.5 TO STA. 341+91

- ① PROP. POLY. HMA BINDER COURSE, SMA, N80, 2"
- ② WET REFLECTIVE TEMPORARY TAPE TYPE III, 5" LANE LINE (SKIP-DASH)

* OMIT LANE 3 WHEN IN A
2 LANE SECTION
** LANE 1 MILLING OPERATIONS
SHALL BE PERFORMED
CONCURRENTLY TO LANE 1
SMA PAVING OPERATIONS.

FILE NAME: p:\IL084\BID\INTCG\Illinois.gov\WIDOT\00	USER NAME: pparaghal	DESIGNED: -	REVISED: - AP 7/11/2016
Projects\DOT Offices\District 1\Projects\0144	Drawn: Data\Design\0144814-sht-plan.dgn	CHECKED: -	REVISED: -
PLOT SCALE: 1/80,000 1" = 100'	DATE: -	REVISED: -	REVISED: -
PLOT DATE: 7/12/2016			

STATE OF ILLINOIS
DEPARTMENT OF TRANSPORTATION

IL. ROUTE 55
SUGGESTED SEQUENCE OF OPERATIONS

SCALE: SHEET NO. 1 OF 1 SHEETS STA. TO STA.

F.A.I. RTE.	SECTION	COUNTY	TOTAL SHEETS	SHEET NO.
55	2014-079 RS, BR&T	WILL/DP/COOK	265	21A
CONTRACT NO. 60Y65				
ILLINOIS FED. AID PROJECT				

**ROADWAY WORK LEGEND
FOR OVERLAY RESURFACING OF IL 53 PCC RAMPS**

- (D) PROP. P.C.C. SURFACE REMOVAL, 1 3/4"
- (E) PROP. HOT-MIX ASPHALT SURFACE REMOVAL, 4"
- (F) PROP. HOT-MIX ASPHALT SURFACE REMOVAL, 1/4"
- (G) PROP. HMA SURFACE COURSE, MIX. "E", N70, 1 3/4"
- (H) PROP. HMA BINDER COURSE, IL-19, N70, 2 1/4"
- (I) PROP. POLY. LEVELING BINDER, IL-4.75, N50, 1"
- (J) PROP. POLY. LEVELING BINDER, IL-4.75, N50, 1 1/4"

30-FT PCC SURFACE
RMVL - BUTT JT (TYP.)

30-FT PCC SURFACE
RMVL - BUTT JT (TYP.)

EXISTING
PCC RAMP
EXISTING
HMA RAMP

30-FT PCC SURFACE
RMVL - BUTT JT (TYP.)

30-FT PCC SURFACE
RMVL - BUTT JT (TYP.)

**PAVEMENT MARKING LEGEND
FOR OVERLAY RESURFACING OF IL 53 PCC RAMPS**

- (1) PROP. THERMO. PVT MRK, LETTERS AND SYMBOLS, WHITE (TYP.)
- (2) PROP. THERMO. PVT MRK - LINE 4", SOLID (TYP.)
- (3) PROP. THERMO. PVT MRK - LINE 6", SOLID, WHITE (TYP.)
- (4) PROP. THERMO. PVT MRK - LINE 8", SOLID WHITE (TYP.)
- (5) PROP. THERMO. PVT MRK - LINE 12", SOLID (TYP.)
- (6) PROP. THERMO. PVT MRK - LINE 24", SOLID, WHITE (TYP.)

NOTE:

PERMANENT PAVEMENT MARKINGS SHALL BE THERMOPLASTIC (OF THE EXTRUDED TYPE) AND SHOULD BE PLACED IN ACCORDANCE WITH THE "DISTRICT ONE TYPICAL PAVEMENT MARKINGS" DETAIL (TC-13) AND MULTI-LANE FREEWAY PAVEMENT MARKING DETAILS (TC-12).

**NORTHWEST AND SOUTHWEST PCC RAMPS
BY I-55 AND IL 53**

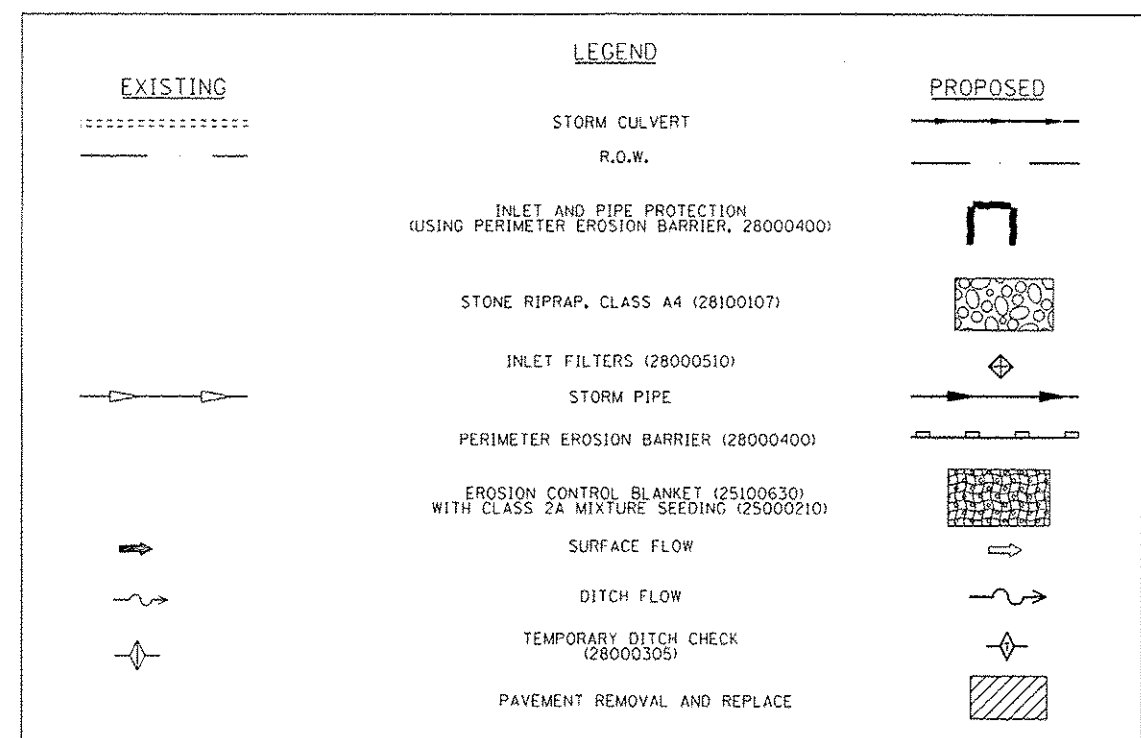
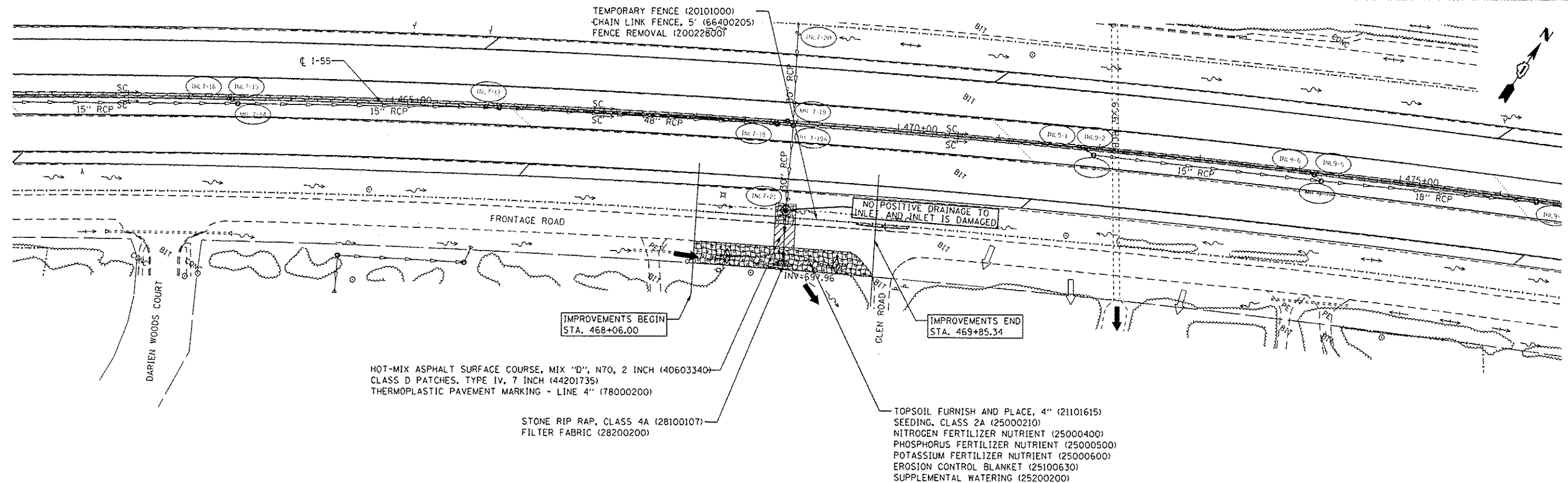
FILE NAME :	USER NAME :	DESIGNED :	REVISED :
p:\1\1084EB10\INTEG\illinois.gov\PIWIDOT\Documents\DOT Offices\District 1\Projects\0144814\Design\0144814-abi-plan.dgn	paragon		REVISED -
Default	PLT SCALE = 100.0000 1/1 in.	CHECKED :	REVISED -
	PLT DATE = 7/12/2016	DATE :	REVISED -

**STATE OF ILLINOIS
DEPARTMENT OF TRANSPORTATION**

**ROADWAY PLAN
I-55 (WEBER RD. TO WILLOW SPRINGS ROAD)**

SCALE: 1" = 50' SHEET OF SHEETS STA. TO STA.

F.A.I. RTE.	SECTION	COUNTY	TOTAL SHEETS	SHEET NO.
55	2014-079 RS, BR&T	COOK	265	525
ILLINOIS FED. AID PROJECT			CONTRACT NO. 60Y65	

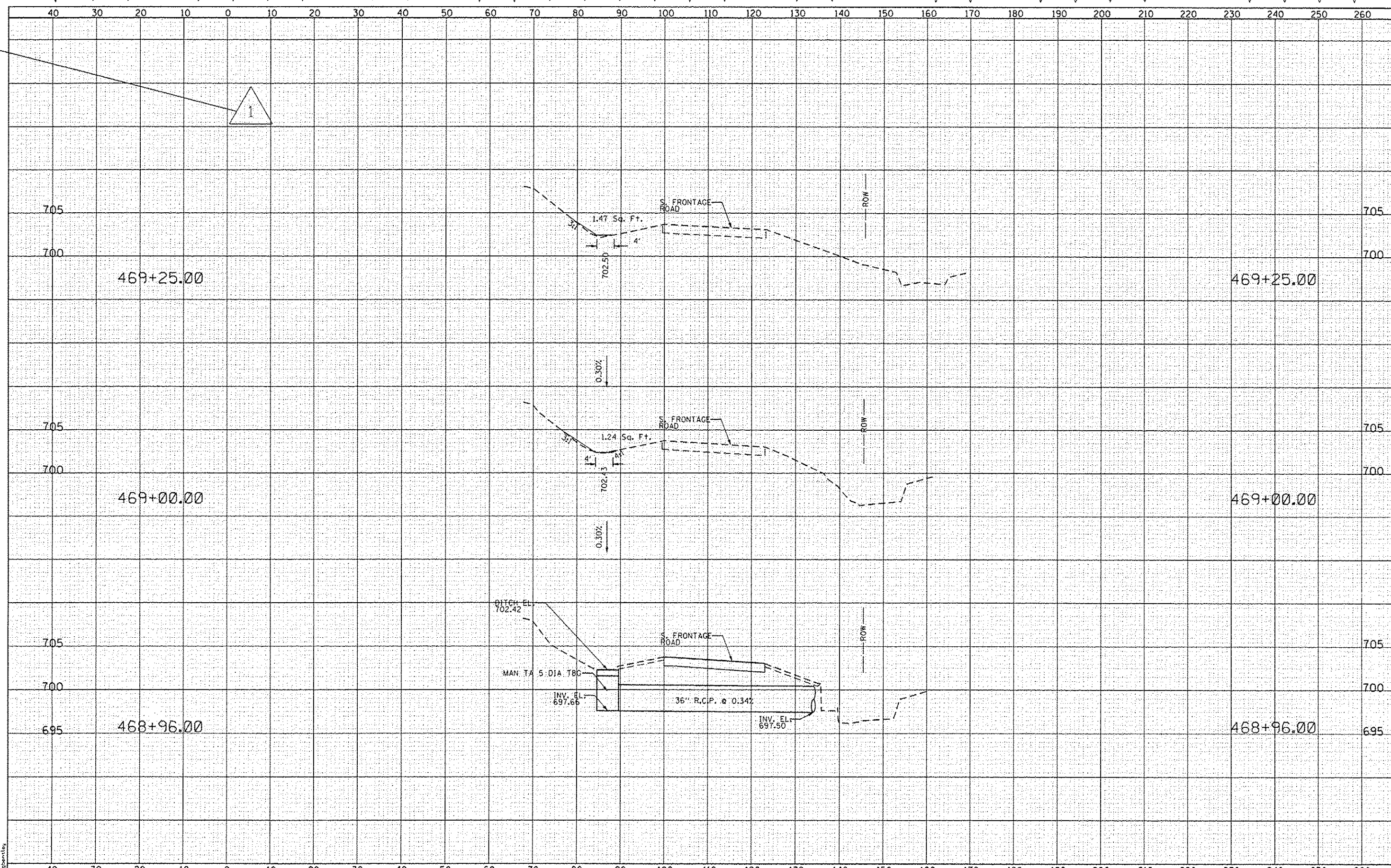


NOTE:
 1. THE LABELED SEEDING AREA HAS COVERED THE MAXIMUM POTENTIAL AREA THAT COULD BE DISTURBED. FOR THOSE AREAS THAT ARE NOT DISTURBED BY CONSTRUCTION ACTIVITIES AND CONSTRUCTION EQUIPMENT, THE SEEDING IS NOT NEEDED.
 2. IF THE CONSTRUCTION ACTIVITY IS SCHEDULED TO CEASE FOR MORE THAN 15 CALENDAR DAYS, TEMPORARY EROSION CONTROL SEEDING SHALL BE APPLIED TO THE DISTURBED PERVIOUS AREA. TEMPORARY SEEDING SHALL CONSIST OF IDOT CLASS 7 SEED MIXTURE (100 LB/ACRE) AND WOOD FIBER MULCH (METHOD 2) CONTAINING A PRE-BLENDED CHEMICAL TACKIFIER.



FILE NAME : D:\9114\stwr05\91.dgn
 PLOT SCALE : 1/8"=1'-0" in.
 USER NAME : engbentley

AEG Ltd. 3100 Dundee Road, Suite 502, Northbrook, IL 60062 847.753.8020 office 847.753.8023 fax	DESIGNED - GS	REVISED -	STATE OF ILLINOIS DEPARTMENT OF TRANSPORTATION	I-55 FRONTAGE ROAD - LOCATION 2 EROSION CONTROL, SEEDING, AND REMOVAL PLAN		F.A. RTE.	SECTION	COUNTY	TOTAL SHEETS	SHEET NO.
	DRAWN - AF	REVISED -		55	2014-079 RS, BR&T	DUPAGE	265	121		
CHECKED - YQ	REVISED -			SCALE: SHEET OF SHEETS STA. TO STA.		CONTRACT NO. 60Y65				
DATE - 5/02/2016	REVISED -					ILLINOIS FED. AID PROJECT				



FILE NAME = D:\0114\enr\114\loc2\end.dgn
 PLOT SCALE = 20.0000' / 1" =
 USER NAME = bsingh@tda.com

AEG Ltd.
 3100 Dundee Road, Suite 502, Northbrook, IL 60062
 847.753.8020 office 847.753.8023 fax

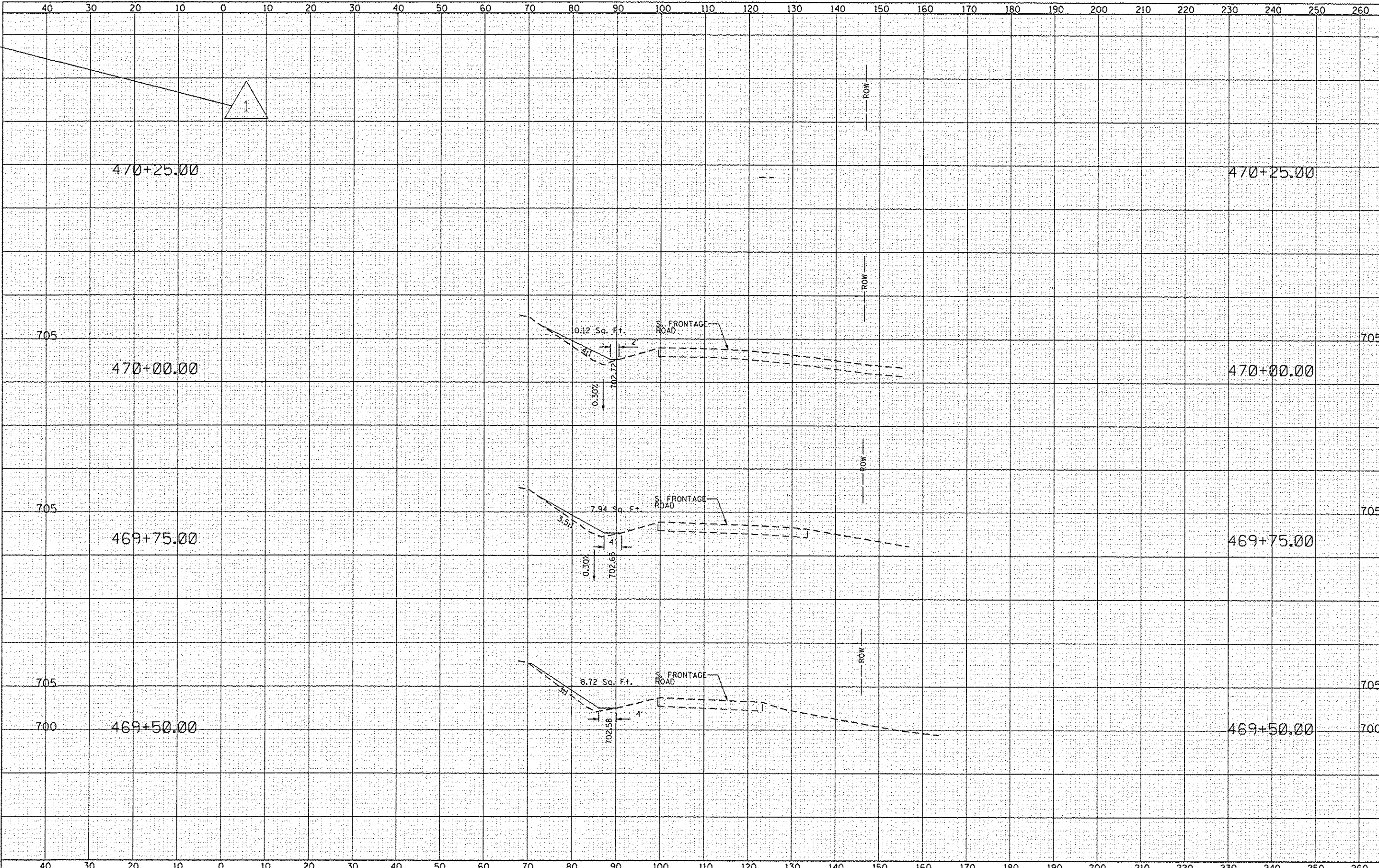
DESIGNED - GS	REVISED - 06/23/2016
DRAWN - BS	REVISED -
CHECKED - YD	REVISED -
DATE - 06/23/2016	REVISED -

STATE OF ILLINOIS
 DEPARTMENT OF TRANSPORTATION

I-55 FRONTAGE ROAD
CROSS SECTIONS - LOCATION 2

SCALE: SHEET OF SHEETS STA. 468+96.00 TO STA. 469+25.00

F.P. R/E.	SECTION	COUNTY	TOTAL SHEETS	SHEET NO.
55	2014-079 RS, BR&T	DUPAGE	265	1258
CONTRACT NO. 60Y65			ILLINOIS FED. AID PROJECT	



FILE NAME: D:\0314\atv\rs\loc2\embd.dgn
 PLOT SCALE: 1/8"=1'-0"
 USER NAME: engbert@stg

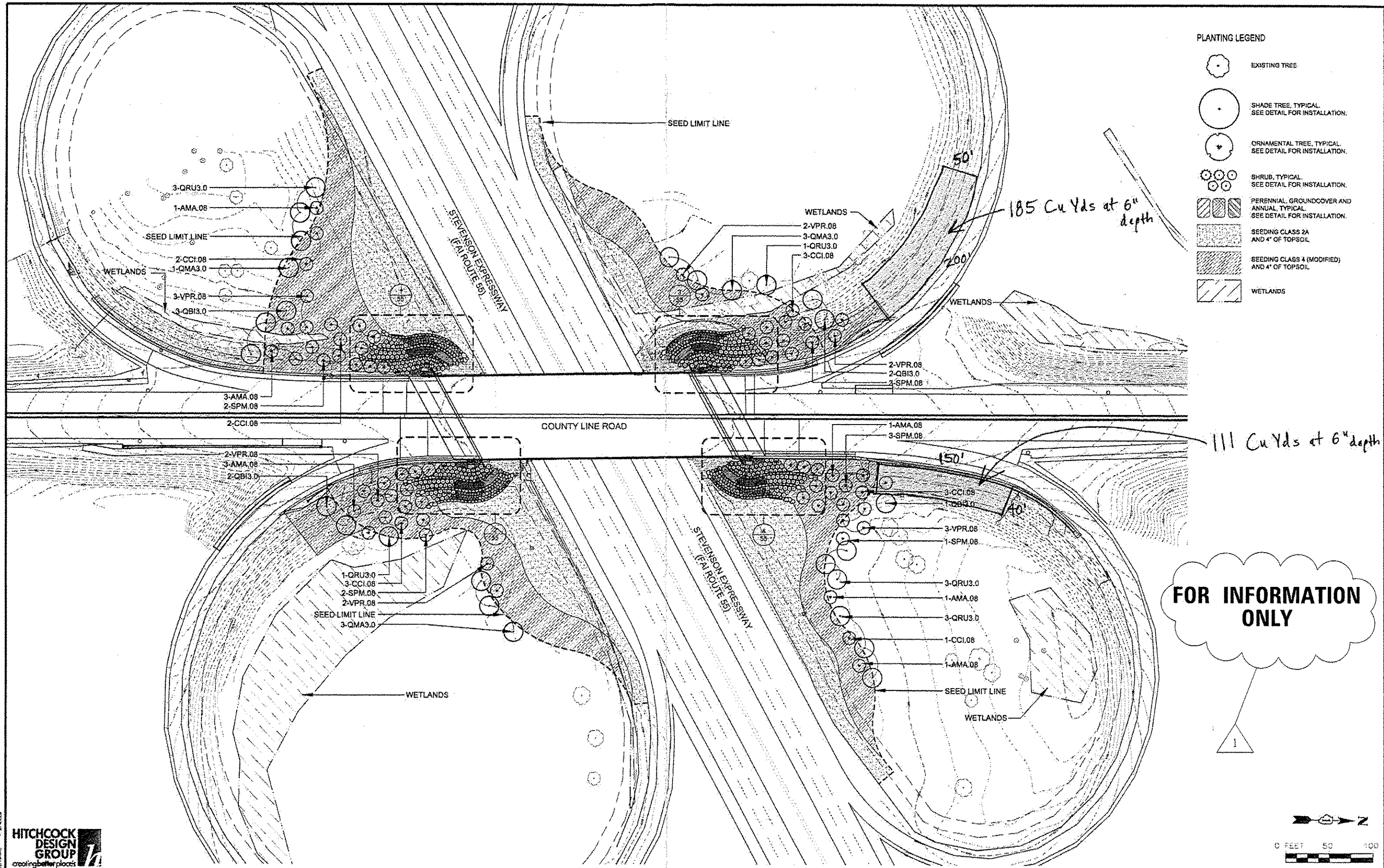
AEG Ltd.
 3100 Dundee Road, Suite 502, Northbrook, IL 60062
 847.753.8020 office 847.753.8023 fax

DESIGNED - GS	REVISED - 06/23/2016
DRAWN - BS	REVISED -
CHECKED - YO	REVISED -
DATE - 06/23/2016	REVISED -

STATE OF ILLINOIS
DEPARTMENT OF TRANSPORTATION

I-55 FRONTAGE ROAD
CROSS SECTIONS - LOCATION 2
 SCALE: SHEET OF SHEETS STA. 469+50.00 TO STA. 470+25.00

F.A. RTE.	SECTION	COUNTY	TOTAL SHEETS	SHEET NO.
55	2014-079 RS, BR&T	DUPAGE	265	125C
CONTRACT NO. 60Y65			ILLINOIS FED. AID PROJECT	



- PLANTING LEGEND**
- EXISTING TREE
 - SHADE TREE, TYPICAL. SEE DETAIL FOR INSTALLATION.
 - ORNAMENTAL TREE, TYPICAL. SEE DETAIL FOR INSTALLATION.
 - SHRUB, TYPICAL. SEE DETAIL FOR INSTALLATION.
 - PERENNIAL GROUNDCOVER AND ANNUAL, TYPICAL. SEE DETAIL FOR INSTALLATION.
 - SEEDING CLASS 2A AND 4" OF TOPSOIL
 - SEEDING CLASS 4 (MODIFIED) AND 4" OF TOPSOIL
 - WETLANDS

FOR INFORMATION ONLY

1



1170 SOUTH HOBOLT ROAD
JOLIET, ILLINOIS 60431
STRAND ASSOCIATES (815) 744-4200

USER NAME	BFM	DESIGNED	BFM	REVISED	03-10-13
DRAWN	ANS	REVISED	AP 7/12/2016		
CHECKED	TCK	REVISED			
PLOT DATE	01/24/13	DATE	01-24-13	REVISED	

**STATE OF ILLINOIS
DEPARTMENT OF TRANSPORTATION**

LANDSCAPE PLAN

SCALE: 1"=50' SHEET NO. OF SHEETS STA. TO STA.

F.A.I. RTE.	SECTION	COUNTY	TOTAL SHEETS	SHEET NO.
55	2014-079 RS, BR&T	COOK/CODU/PAGE	265	167
CONTRACT NO. 60Y65				

105-211-295