

F.A.I. RTE.	SECTION	COUNTY	TOTAL SHEETS	SHEET NO.
255		VARIOUS	5	1
		ILLINOIS	CONTRACT NO. 76J54	

STATE OF ILLINOIS
DEPARTMENT OF TRANSPORTATION
DIVISION OF HIGHWAYS

PROPOSED
HIGHWAY PLANS

FAI ROUTE 255 (I-255)
SECTION 82-(1,2,3,4)PP-1,67-(1,2,3)PP-1
PATCHING
VARIOUS COUNTIES

C-98-029-16

FOR INDEX OF SHEETS, SEE SHEET NO. 2

ADT

JB BRIDGE TO ROUTE 3
 2015 ADT=64100 (ACTUAL)
 2016 ADT=64500 (ESTIMATED)
 2036 ADT=74200 (ESTIMATED)
 SU=2.3% MU=8.1%

ROUTE 3 TO NORTH DUPO
 2015 ADT=50000 (ACTUAL)
 2016 ADT=50400 (ESTIMATED)
 2036 ADT=57900 (ESTIMATED)
 SU=2.7% MU=10.1%

NORTH DUPO TO 157
 2015 ADT=39500 (ACTUAL)
 2016 ADT=39800 (ESTIMATED)
 2036 ADT=45700 (ESTIMATED)
 SU=3.2% MU=12.9%

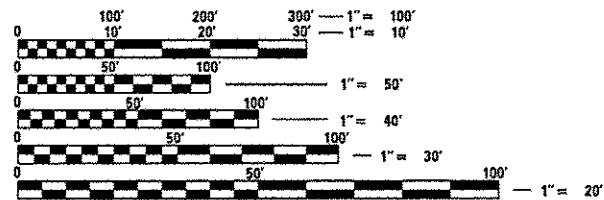
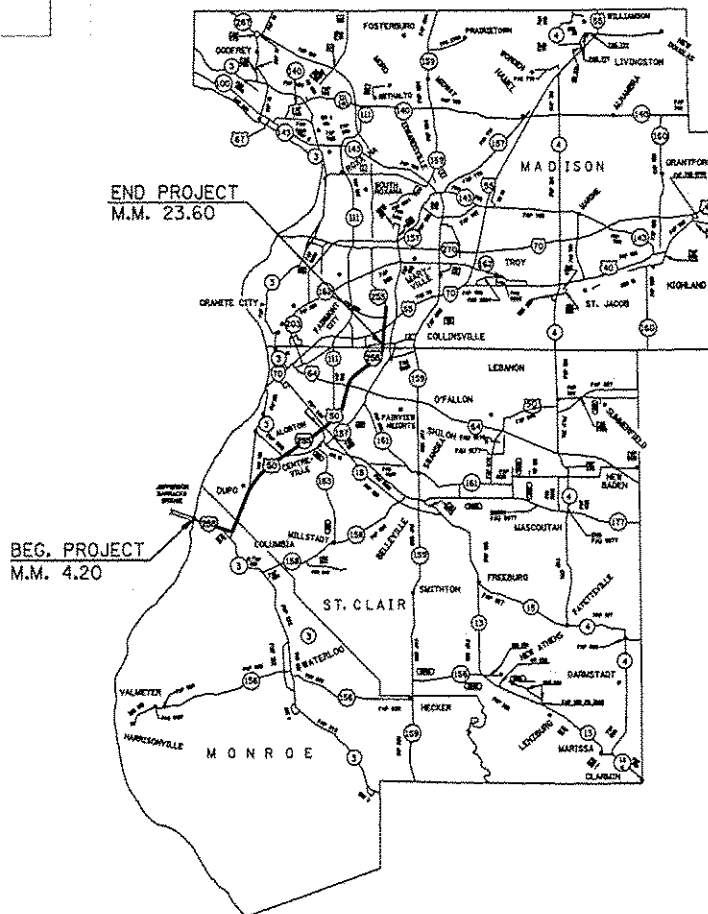
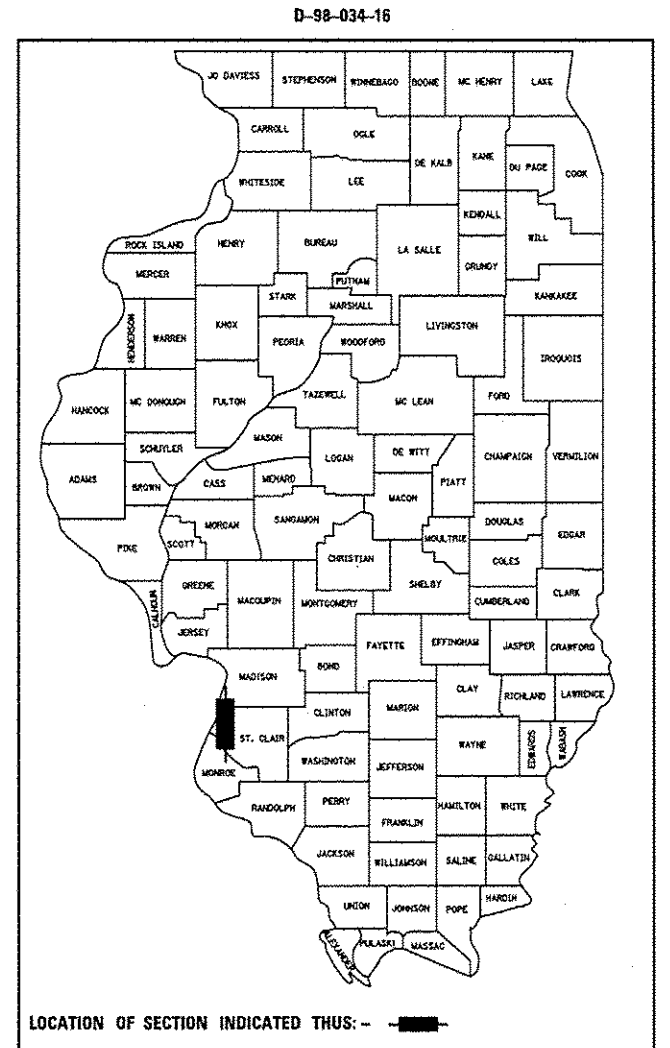
157 TO IL 15
 2015 ADT=49600 (ACTUAL)
 2016 ADT=47200 (ESTIMATED)
 2036 ADT=54300 (ESTIMATED)
 SU=3.3% MU=15.7%

IL 15 TO I-64
 2015 ADT=51800 (ACTUAL)
 2016 ADT=52200 (ESTIMATED)
 2036 ADT=6000 (ESTIMATED)
 SU=3.3% MU=14.5%

I-64 TO SOUTH OF COLLINSVILLE ROAD
 2015 ADT=48800 (ACTUAL)
 2016 ADT=49100 (ESTIMATED)
 2036 ADT=56500 (ESTIMATED)
 SU=2.8% MU=13.7%

WHEREVER SECTION DIST 8 PATCHING 2017-2 APPEARS IN THIS CONTRACT, IT SHOULD READ 82-(1,2,3,4)PP-1,67-(1,2,3)PP-1.

START LAT - 38.48389
 LONG - -90.26639
 END LAT - 38.65972
 LONG - -90.03167



FULL SIZE PLANS HAVE BEEN PREPARED USING STANDARD ENGINEERING SCALES. REDUCED SIZED PLANS WILL NOT CONFORM TO STANDARD SCALES. IN MAKING MEASUREMENTS ON REDUCED PLANS, THE ABOVE SCALES MAY BE USED.

J.U.L.I.E.
 JOINT UTILITY LOCATION INFORMATION FOR EXCAVATION
 1-800-892-0123
 OR 811

PROJECT ENGINEER: HERVE GELIN (618) 346-3179
PROJECT LEADER: TIM PRICE (618) 346-3284
SQUAD LEADER: BILLIE OWEN (618) 346-3329

CONTRACT NO. 76J54

GROSS LENGTH = 102,432 FT. = 19.40 MILE
 NET LENGTH = 102,432 FT. = 19.40 MILE

STATE OF ILLINOIS
 DEPARTMENT OF TRANSPORTATION
 DIVISION OF HIGHWAYS

SUBMITTED May 13 20 16

Jeffrey E. Kane
 REGIONAL ENGINEER, REGION 5

Maurice M. Adams, P.E.
 ENGINEER OF DESIGN AND ENVIRONMENT

Cher Osman, P.E.
 DIRECTOR OF HIGHWAYS, CHIEF ENGINEER

**PRINTED BY THE AUTHORITY
 OF THE STATE OF ILLINOIS**

GENERAL NOTES

INDEX OF SHEETS

1. COVER SHEET
2. INDEX OF SHEETS, HIGHWAY STANDARDS, GENERAL NOTES, AND COMMITMENTS
3. SUMMARY QUANTITIES
4. TYPICAL SECTIONS
5. CHANGEABLE MESSAGE SIGN DETAIL

1. ILLINOIS STATE LAW REQUIRES A 48-HOUR NOTICE TO BE GIVEN TO UTILITIES BEFORE DIGGING. FIELD MARKING OF FACILITIES MAY BE OBTAINED BY CONTACTING J.U.L.I.E. (1-800-892-0123 OR 811) OR FOR NON-MEMBERS THE UTILITY COMPANY DIRECTLY.
2. THE CONTRACTOR AND THE ENGINEER SHALL BE AWARE THAT NO SURVEY WAS PERFORMED FOR THIS PROJECT. THE STATIONING, TOPOGRAPHY, AND QUANTITIES SHOWN IN THE PLANS WERE CREATED USING MICROFILM AND FIELD MEASUREMENTS. ALL SHALL BE ASSUMED TO BE APPROXIMATE. THE CONTRACTOR SHALL VERIFY DIMENSIONS AND CONDITIONS IN THE FIELD PRIOR TO CONSTRUCTION AND ORDERING OF MATERIALS.
3. "ROAD CONSTRUCTION AHEAD" SIGNS SHALL BE PLACED AT EACH END OF THE PROJECT PLUS THE INTERSECTING SIDE ROADS, AND WILL BE CONSIDERED INCLUDED IN THE TRAFFIC CONTROL PAY ITEMS. ALL CONSTRUCTION SIGNS SHALL BE 48" X 48" FLUORESCENT ORANGE.
4. A FLAGGER SHALL BE REQUIRED AT ALL TIMES WHEN WORKERS OR EQUIPMENT ARE ENCROACHING THE LANE OF TRAFFIC
5. THE RESIDENT ENGINEER SHALL VERIFY THE EXISTENCE OF HIGHWAY LIGHTING AND/OR INTELLIGENT TRANSPORTATION SYSTEMS (I.T.S.) UTILITIES WITHIN THE PROJECT LIMITS. IF HIGHWAY LIGHTING AND/OR I.T.S. EXISTS WITHIN THE PROJECT LIMITS, AND IF THESE ITEMS REQUIRE LOCATING, THE CONTRACTOR SHALL BE DIRECTED TO DO SO ACCORDING TO SECTION 803 OF THE STANDARD SPECIFICATIONS. THIS WORK SHALL BE PAID FOR ACCORDING TO ARTICLE 109.04 OF THE STANDARD SPECIFICATIONS.
6. THE DEPARTMENT STRONGLY ENCOURAGES THE PRIME CONTRACTOR AND THEIR APPROVED SUB-CONTRACTORS TO HIRE MINORITY, WOMEN AND DISADVANTAGED INDIVIDUALS FROM ITS FEDERALLY FUNDED HIGHWAY CONSTRUCTION CAREERS TRAINING PROGRAM (HCCTP) TO HELP MEET WORKFORCE AND TRAINEE GOALS. THIS PROGRAM IS TRAINING MINORITIES, WOMEN AND DISADVANTAGED INDIVIDUALS IN HIGHWAY CONSTRUCTION-RELATED SKILLS, E.G., MATH FOR THE TRADES, JOB READINESS, TECHNICAL SKILLS COURSEWORK (CARPENTRY, CONCRETE FLATWORK, BLUEPRINT READING, SITE PLANS, SITE WORK, TOOLS USE, ETC.) AND OSHA 10 HOUR CERTIFICATION, TO PREPARE THEM FOR A CAREER IN THE HIGHWAY CONSTRUCTION TRADES. GRADUATES ARE WELL-TRAINED AND READY TO BECOME PRODUCTIVE ENTRY-LEVEL CONSTRUCTION WORKERS. CONTACT THE DISTRICT 8 EEO OFFICE AT 618-346-3360 AND/OR THE HCCTP COORDINATOR AT 618-874-6528 TO LEARN MORE ABOUT THE PROGRAM AND FOR ASSISTANCE IN MEETING WORKFORCE AND TRAINEE GOALS.
7. PRIOR TO PATCHING, A PATCHING SURVEY SHALL BE PERFORMED TO DETERMINE PRIORITY PATCHING LOCATIONS. THE PATCHING SURVEY SHALL BE COORDINATED WITH THE BUREAU OF OPERATIONS FIELD ENGINEER TIM PRICE.

STANDARDS

- | | |
|-----------|---|
| 000001-06 | STANDARD SYMBOLS, ABBREVIATIONS AND PATTERNS |
| 001006 | DECIMAL OF AN INCH AND OF A FOOT |
| 442001-04 | CLASS A PATCHES |
| 701400-08 | APPROACH TO LANE CLOSURE, FREEWAY/EXPRESSWAY |
| 701401-09 | LANE CLOSURE FREEWAY/EXPRESSWAY |
| 701411-09 | LANE CLOSURE, MULTILANE, AT ENTRANCE OR EXIT RAMP, FOR SPEEDS > 45MPH |
| 701446-07 | TWO LANE CLOSURE FREEWAY/EXPRESSWAY |
| 701901-05 | TRAFFIC CONTROL DEVICES |

COMMITMENTS

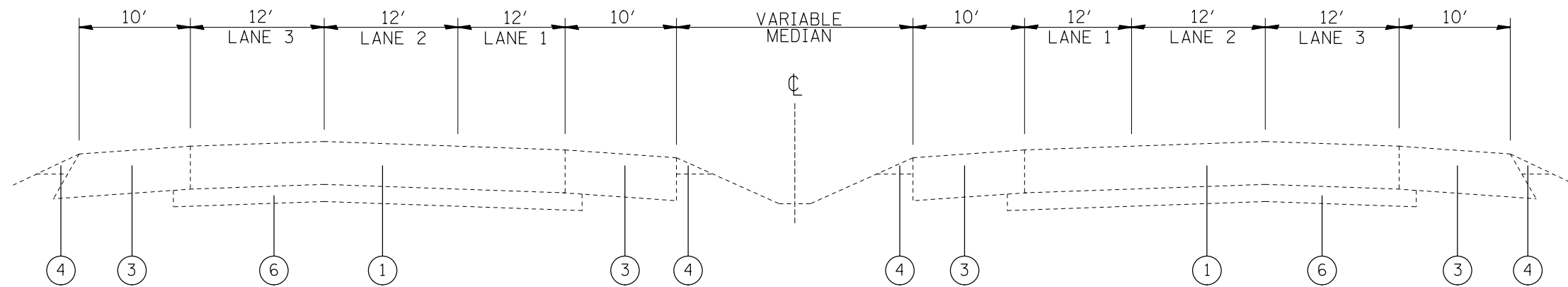
NONE

FILE NAME =	USER NAME = lewisjka	DESIGNED -	REVISED -	STATE OF ILLINOIS DEPARTMENT OF TRANSPORTATION	INDEX OF SHEETS, HIGHWAY STANDARDS, GENERAL NOTES, AND COMMITMENTS	F.A.I. RTE.	SECTION	COUNTY	TOTAL SHEETS	SHEET NO.
\\l084EBID\INTEG\Illinois.gov\PI\DOT\Documents\DOT Offices\District 8\Projects\0875-DRAWING\DATA\CAD\Sheets\0876J54-elt-genne	PLOT SCALE = 100.0000' / 1in.	CHECKED -	REVISED -			255	DIST 8 PATCHING 2017-2	VARIOUS	5	2
Default	PLOT DATE = 5/12/2016	DATE -	REVISED -			SCALE: SHEET OF SHEETS STA. TO STA.		ILLINOIS FED. AID PROJECT CONTRACT NO. 76J54		

CODE NO.	ITEM	UNIT	TOTAL QUANTITY	CONSTR. CODE	
				100% STATE	ROADWAY 0005 URBAN
44200549	CLASS A PATCHES, TYPE I, 10 INCH	SO YD	240	240	
44200553	CLASS A PATCHES, TYPE II, 10 INCH	SO YD	800	800	
44200557	CLASS A PATCHES, TYPE III, 10 INCH	SO YD	200	200	
44200559	CLASS A PATCHES, TYPE IV, 10 INCH	SO YD	160	160	
44213000	PATCHING REINFORCEMENT	SO YD	1400	1400	
44213200	SAW CUTS	FOOT	6600	6600	
44213204	TIE BARS 3/4"	EACH	50	50	
67000400	ENGINEER'S FIELD OFFICE, TYPE A	CAL MO	2	2	
67100100	MOBILIZATION	LSUM	1	1	
70100420	TRAFFIC CONTROL AND PROTECTION, STANDARD 701411	EACH	30	30	
70100800	TRAFFIC CONTROL AND PROTECTION, STANDARD 701401	LSUM	1	1	
70100815	TRAFFIC CONTROL AND PROTECTION, STANDARD 701446	LSUM	1	1	
70106800	CHANGEABLE MESSAGE SIGN	CAL MO	6	6	
70200100	NIGHTTIME WORK ZONE LIGHTING	LSUM	1	1	

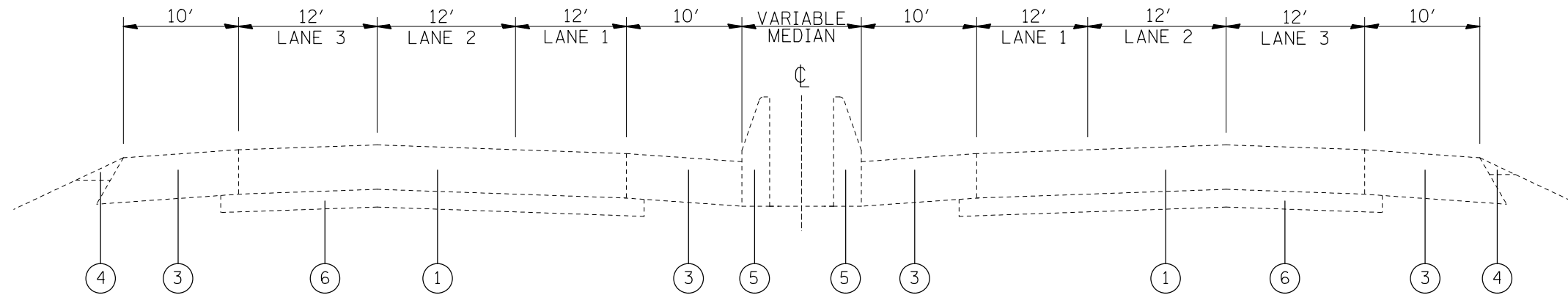
CODE NO.	ITEM	UNIT	TOTAL QUANTITY	CONSTR. CODE	
				100% STATE	ROADWAY 0005 URBAN
70300100	SHORT TERM PAVEMENT MARKING	FOOT	160	160	
70300150	SHORT TERM PAVEMENT MARKING REMOVAL	SO FT	53	53	
70300240	TEMPORARY PAVEMENT MARKING - LINE 6"	FOOT	1800	1800	
* 78001130	PAINT PAVEMENT MARKING - LINE 6"	FOOT	1800	1800	
* 78100100	RAISED REFLECTIVE PAVEMENT MARKER	EACH	32	32	
X7010410	SPEED DISPLAY TRAILER	CAL MO	2	2	

* SPECIALTY ITEM



FAI 255

M.M. 4.20 to M.M. 10.50
M.M. 19.20 to M.M. 23.60



FAI 255

M.M. 10.50 to M.M. 19.20

LEGEND

- ① EXISTING C.R.P.C.C. PAVEMENT 9"
- ② EXISTING P.C.C. PAVEMENT 10"
- ③ EXISTING BITUMINOUS SHOULDERS 9"
- ④ EXISTING AGGREGATE SHOULDERS, TYPE B
- ⑤ EXISTING CONCRETE BARRIER
- ⑥ EXISTING STABILIZED SUB-BASE, 4"

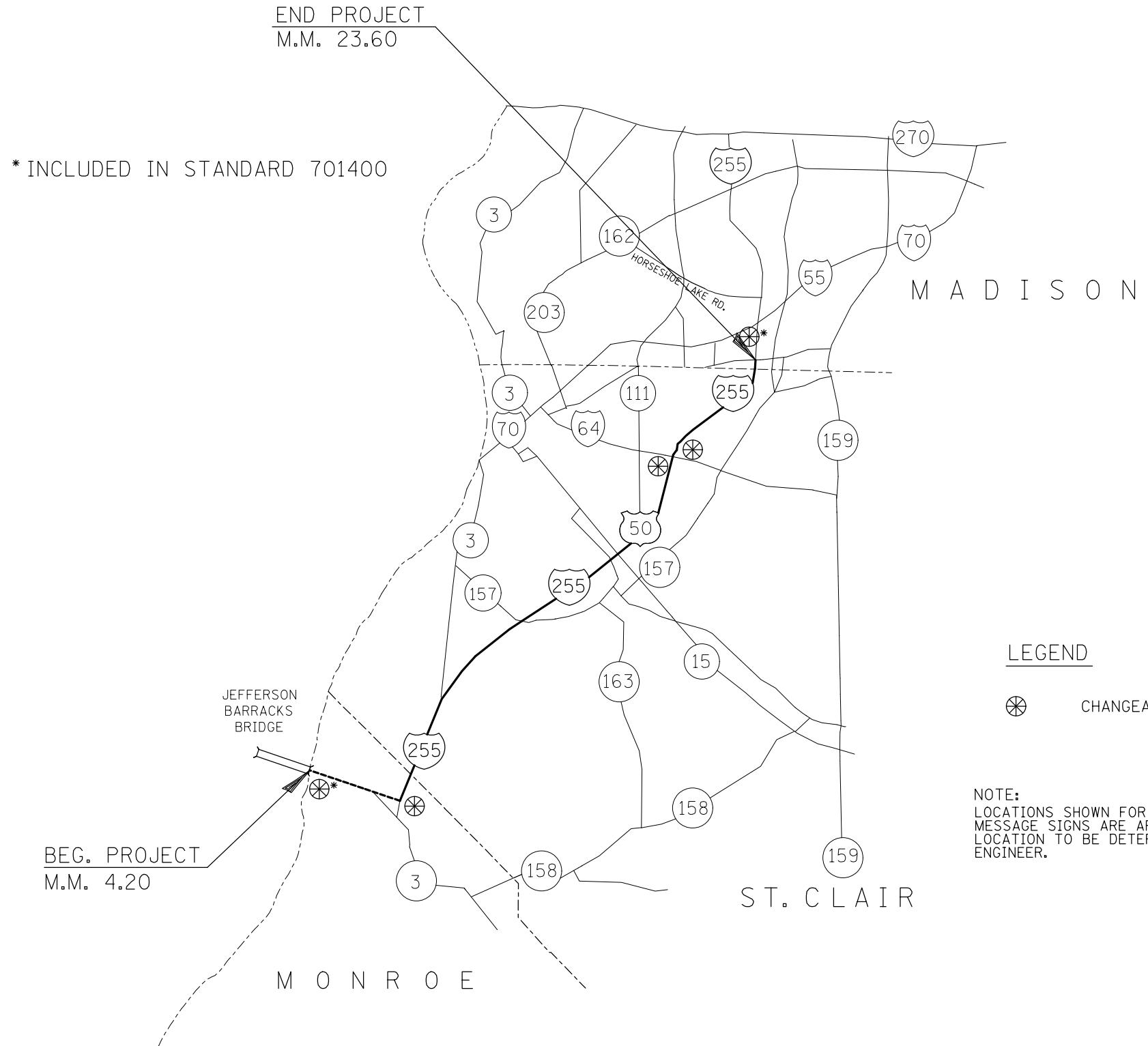
FILE NAME =	USER NAME = lewiska	DESIGNED -	REVISED -
pw:\IL\084EBIDINTEG\illinois.gov\PWIDOT\Documents\DOT Offices\District 8\Projects\0876\DRAWING\DATA\EA0sheets\0876J54-sht-plan.dwg		REVISIONS	REVISED -
Default	PLOT SCALE = 100.0000' / 1in.	CHECKED -	REVISED -
	PLOT DATE = 5/12/2016	DATE -	REVISED -

**STATE OF ILLINOIS
DEPARTMENT OF TRANSPORTATION**

TYPICAL SECTIONS

SCALE: SHEET OF SHEETS STA. TO STA.

F.A.I. RTE.	SECTION	COUNTY	TOTAL SHEETS	SHEET NO.
255	DIST 8 PATCHING 2017-2	VARIOUS	5	4
CONTRACT NO. 76J54			ILLINOIS FED. AID PROJECT	



LEGEND

⊗ CHANGEABLE MESSAGE SIGNS

NOTE:
LOCATIONS SHOWN FOR THE CHANGEABLE MESSAGE SIGNS ARE APPROXIMATE. THE EXACT LOCATION TO BE DETERMINED BY THE RESIDENT ENGINEER.

FILE NAME =	USER NAME = lewiska	DESIGNED -	REVISED -
pw:\IL\084EBIDINTEG\illinois.gov\PWIDOT\Documents\IDOT Offices\District 8\Projects\0876\DRAWING\DATA\CADsheets\0876J54-sht-pln.dwg		CHECKED -	REVISED -
Default	PLOT DATE = 5/12/2016	DATE -	REVISED -

**STATE OF ILLINOIS
DEPARTMENT OF TRANSPORTATION**

CHANGABLE MESSAGE SIGN DETAIL				
SCALE:	SHEET	OF	SHEETS	STA. TO STA.

F.A.I. RTE.	SECTION	COUNTY	TOTAL SHEETS	SHEET NO.
255	DIST 8 PATCHING 2017-2	VARIOUS	5	5
CONTRACT NO. 76J54				
ILLINOIS FED. AID PROJECT				