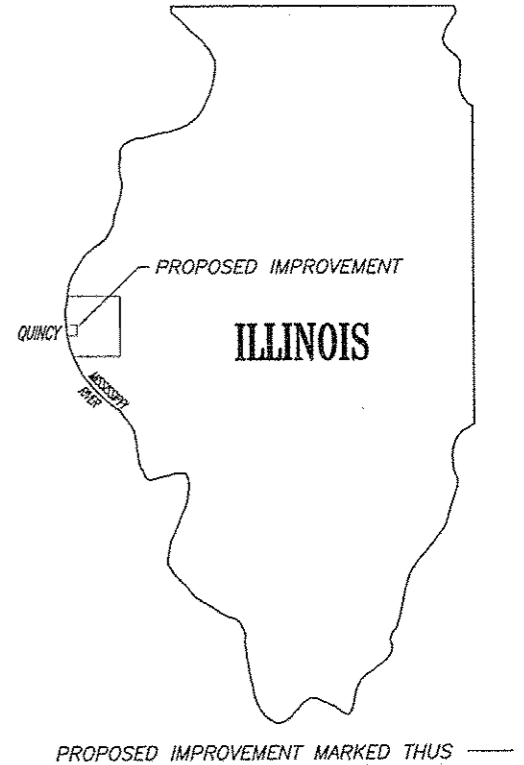


COUNTY	ROUTE	SECTION	SHT. NO.
ADAMS	CO HWY 50	16-00220-00-RS	1
COVER SHEET			
TOTAL NO. SHEETS - 14			

INDEX OF SHEETS

SHEET NO.	SHEET
1	TITLE SHEET
2	SUMMARY OF QUANTITIES HMA MIXTURE REQUIREMENTS APPLICATION RATES GENERAL NOTES PAY ITEM ABBREVIATIONS
3	TYPICAL SECTIONS
4-5	PLAN & PROFILE SHEET
6-8	STRIPING PLAN
9	INLETS, SPECIAL, TYPE E
10	COMMERCIAL ENTRANCE DETAILS
11-12	BUTT JOINT DETAILS
13	MANHOLES TO BE RECONSTRUCTED
14	LONGITUDINAL JOINT SEALANT

STATE OF ILLINOIS
DEPARTMENT OF TRANSPORTATION
DIVISION OF HIGHWAYS
PLANS FOR PROPOSED
SURFACE TRANSPORTATION / RURAL PROGRAM FUNDS
ADAMS COUNTY SEC. 16-00220-00-RS
FAU ROUTE 7797 (CO. HWY 50)
PROJECT NO. RS-0001(117)
JOB NO. C-96-228-16

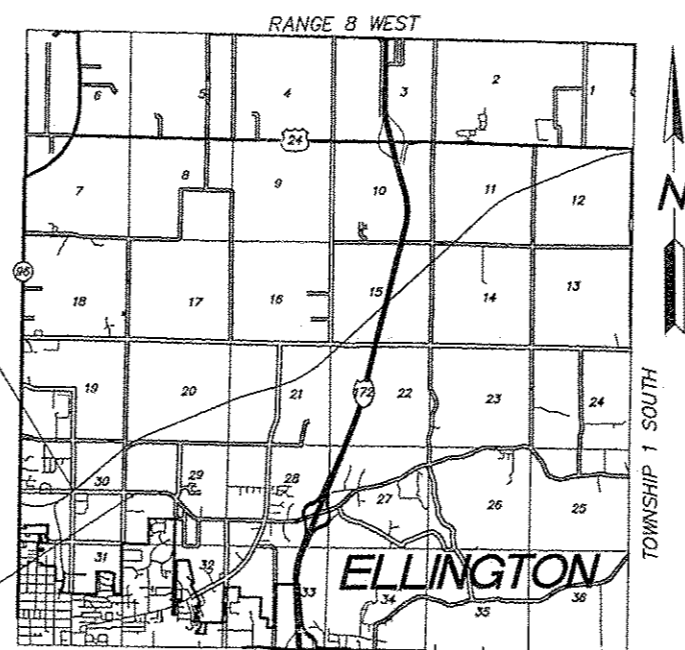


- STANDARDS**
- STANDARD 602601-04
 - STANDARD 604001-04
 - STANDARD 604051-04
 - STANDARD 606001-06
 - STANDARD 701502-06
 - STANDARD 701606-10
 - STANDARD 701701-10
 - STANDARD 701901-05
 - STANDARD 780001-05

THE PROPOSED IMPROVEMENT CONSISTS OF REMOVING THE EXISTING SURFACE AND OVERLAYING THE ROADWAY WITH 1 1/2" POLYMERIZED HOT-MIX ASPHALT SURFACE COURSE, PAVEMENT MARKINGS AND OTHER ANCILLARY WORK.

ADAMS COUNTY
SEC. 16-00220-00-RS
PAVEMENT MARKINGS BEGIN STA. 28+33
RESURFACING BEGINS STA. 2+40.21

ADAMS COUNTY
SEC. 16-00220-00-RS
RESURFACING ENDS STA. 1+50
PAVEMENT MARKINGS END STA. 15+60



DESIGN DESIGNATION:
MAJOR COLLECTOR - ADT 6250
DESIGN SPEED - 40 M.P.H.

SUMMARY OF LENGTH:

GROSS LENGTH:	
FAU 7797 - STA. 28+33 - STA. 30+50 (STRIPING)	= 217.00 FT.
FAU 7797 - STA. 2+40.21 TO STA. 26+55.35	= 2,415.14 FT.
TR 347 - STA. 0+00 TO STA. 1+50	= 150.00 FT.
TR 347 - STA. 1+50 TO STA. 15+60 (STRIPING)	= 1,410.00 FT.
	4,192.14 FT.

NET LENGTH TO BE IMPROVED = 4,192.14 FT. = 0.794 MILES

THESE PLANS WERE PREPARED BY ME OR A FULL TIME MEMBER OF MY STAFF WORKING UNDER MY PERSONAL SUPERVISION.

SUBMITTED BY *James R. Danten* DATE 4/29/16
 COUNTY ENGINEER
 LICENSE NO. 062-044792
 LIC. EXPIRES 11/30/2017



FULL SIZE PLANS HAVE BEEN PREPARED USING STANDARD ENGINEERING SCALES, REDUCED SIZED PLANS WILL NOT CONFORM TO STANDARD SCALES, IN MAKING MEASUREMENTS ON REDUCED PLANS, THE ABOVE SCALES MAY BE USED.

- UTILITIES:**
- J.U.L.I.E. 1-800-892-0123
 - AT&T SPRINGFIELD, IL
 - CITY OF QUINCY WATER DEPT. QUINCY, IL
 - COMCAST QUINCY, IL
 - AMEREN ILLINOIS QUINCY, IL
 - ADAMS TELESYSTEMS GOLDEN, IL

APPROVED April 29, 2016
James R. Danten
 COUNTY ENGINEER

PASSED May 12, 2016
Ron Duchambeau
 DISTRICT ENGINEER OF CONSTRUCTION

PASSED May 12, 2016
Steph Dusham
 DISTRICT ENGINEER OF LOCAL ROADS AND STREETS

RELEASING FOR BID BASED ON LIMITED REVIEW May 12, 2016
Jeffrey M. Smith
 REGION FOUR ENGINEER

STATE OF ILLINOIS
DEPARTMENT OF TRANSPORTATION

PREPARED BY
 ADAMS COUNTY HIGHWAY DEPARTMENT
 101 NORTH 54th STREET, QUINCY, ILLINOIS

GENERAL NOTES

- WHERE SECTION OR SUB-SECTION STONES, PROPERTY PINS, USGS BENCH MARK MONUMENTS, AND U.S. ARMY CORPS OF ENGINEERS SURVEY MARKERS ARE ENCOUNTERED, THE ENGINEER SHALL BE NOTIFIED BEFORE SUCH STONES AND MONUMENTS ARE REMOVED. THE CONTRACTOR SHALL PROTECT AND CAREFULLY PRESERVE ALL PROPERTY MARKS UNTIL AN OWNER, AN AUTHORIZED SURVEYOR OR THEIR REPRESENTATIVE HAS WITNESSED OR OTHERWISE REFERENCED THE PROPERTY MARKS LOCATION.
- ALL PRIVATELY OWNED UTILITIES, UNLESS OTHERWISE SPECIFIED, WILL BE MOVED BY THEIR RESPECTIVE OWNERS WHERE REQUIRED. THE FOLLOWING UTILITY COMPANIES MAY HAVE FACILITIES WITHIN THE LIMITS OF CONSTRUCTION:

CITY OF QUINCY WATER DEPT.	COMCAST (CABLEVISION)	AMEREN ILLINOIS	AT&T (TELEPHONE)
----------------------------	-----------------------	-----------------	------------------
- THE NOMINAL THICKNESS FOR HMA SURFACE COURSE IS SHOWN ON THE TYPICAL SECTION, STANDARDS, SCHEDULES OR SPECIAL DETAILS. THE CONSTRUCTED THICKNESS OF THE ABOVE ITEMS SHALL NOT BE LESS THAN 90% OF THE NOMINAL THICKNESS AT ANY LOCATION.
- THE UTILITY LOCATIONS, IF MARKED ON THE PLANS, ARE FOR REFERENCE ONLY, AND ARE SHOWN FOR CONTRACTOR INFORMATIONAL USE ONLY, AND ARE NOT TO BE REFERENCED FOR CONSTRUCTION PURPOSES. THE IMPLIED PRESENCE OR ABSENCE OF UTILITIES IS NOT TO BE CONSTRUCTED BY THE OWNER, ENGINEER, CONTRACTOR, OR SUBCONTRACTORS TO BE AN ACCURATE AND COMPLETE REPRESENTATION OF UTILITIES THAT MAY OR MAY NOT EXIST ON THE CONSTRUCTION SITE.
- THE CONTRACTOR SHALL BE RESPONSIBLE FOR DETERMINING THE LOCATION AND ELEVATION OF ALL EXISTING UTILITIES AND TO NOTIFY ALL UTILITY COMPANIES PRIOR TO THE BEGINNING OF CONSTRUCTION. THE REROUTING, DISCONNECTION, PROTECTION, ETC. OF ANY UTILITIES MUST BE COORDINATED BETWEEN THE CONTRACTOR, UTILITY AND OWNER. SITE SAFETY, INCLUDING THE AVOIDANCE OF HAZARDS ASSOCIATED WITH BURIED AND ABOVE GROUND UTILITIES REMAINS THE SOLE RESPONSIBILITY OF THE CONTRACTOR. THIS WILL BE CONSIDERED INCIDENTAL TO THE CONTRACT.
- ANY EXISTING ROAD SIGNS THAT INTERFERE WITH CONSTRUCTION WILL BE REMOVED OR RELOCATED AS DIRECTED BY THE ENGINEER. AFTER THE CONSTRUCTION IS COMPLETED, THE CONTRACTOR WILL REPLACE THE SIGNS AS DIRECTED BY THE ENGINEER. THIS WORK WILL NOT BE PAID FOR SEPERATELY BUT SHALL BE INCLUDED IN THE CONTRACT AND NO ADDITIONAL COMPENSATION WILL BE ALLOWED.

SUMMARY OF QUANTITIES

CODE NO.	ITEM	UNIT	TOTAL QUANTITY	SPECIAL PROVISION
40600290	BITUMINOUS MATERIALS (TACK COAT)	POUND	6,012	
40600625	LEVELING BINDER (MACHINE METHOD), N50	TON	30	*
40600982	HOT-MIX ASPHALT SURFACE REMOVAL - BUTT JOINT	SQ YD	181	*
40600990	TEMPORARY RAMP	SQ YD	72	
40603540	POLYMERIZED HOT-MIX ASPHALT SURFACE COURSE, MIX "D", N70	TON	1,160	*
42300400	PORTLAND CEMENT CONCRETE DRIVEWAY PAVEMENT, 8 INCH	SQ YD	192	
44000154	HOT-MIX ASPHALT SURFACE REMOVAL, 1 1/4"	SQ YD	13,180	*
44000200	DRIVEWAY PAVEMENT REMOVAL	SQ YD	188	
44000500	COMBINATION CURB AND GUTTER REMOVAL	FOOT	449	*
60255800	MANHOLE TO BE ADJUSTED WITH NEW TYPE 1 FRAME, CLOSED LID	EACH	1	*
60258200	MANHOLE TO BE RECONSTRUCTED WITH NEW TYPE 1 FRAME, CLOSED LID	EACH	1	*
60261300	INLETS TO BE ADJUSTED WITH NEW TYPE 11 FRAME AND GRATE	EACH	1	*
60262700	INLETS TO BE RECONSTRUCTED	EACH	2	*
60266800	VALVE BOXES TO BE ADJUSTED	EACH	7	*
60609300	COMBINATION CONCRETE CURB AND GUTTER, TYPE M-6.12 (ABUTTING EXISTING PAVEMENT)	FOOT	449	*
67100100	MOBILIZATION	L SUM	1	
70300100	SHORT TERM PAVEMENT MARKING	FOOT	458	
78000100	THERMOPLASTIC PAVEMENT MARKING - LETTERS AND SYMBOLS	SQ FT	540.5	
78000200	THERMOPLASTIC PAVEMENT MARKING - LINE 4"	FOOT	17,769	
78000400	THERMOPLASTIC PAVEMENT MARKING - LINE 6"	FOOT	284	
78000600	THERMOPLASTIC PAVEMENT MARKING - LINE 12"	FOOT	459	
78000850	THERMOPLASTIC PAVEMENT MARKING - LINE 24"	FOOT	97	
X0327979	PAVEMENT MARKING REMOVAL - GRINDING	SQ FT	1,107	
X1200034	INLET TO BE ADJUSTED WITH NEW LID - SPECIAL	EACH	6	*
X7010216	TRAFFIC CONTROL AND PROTECTION, (SPECIAL)	L SUM	1	*
Z0033700	LONGITUDINAL JOINT SEALANT	FOOT	12,625	*

Δ
Δ
Δ
Δ

Δ SPECIALTY ITEMS

APPLICATION RATES

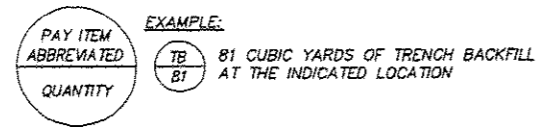
BITUMINOUS MATERIALS (TACK COAT)	
ON EXISTING PAVEMENT	0.05 LB/SQ FT
BETWEEN HMA LIFTS	0.025 LB/SQ FT
BITUMINOUS MATERIALS (PRIME COAT)	
ON AGGREGATE	0.25 #/SQ FT
AGGREGATE (SURFACE, SHOULDERS)	1.8 TON/CU YD

HOT-MIX ASPHALT MIXTURE REQUIREMENTS

PAY ITEM	MIXTURE	ASPHALT GRADE	N Design	VOIDS
LEVELING BINDER, MACHINE METHOD	IL-9.5	PG 64-22	N50	4.0%
POLY. HOT-MIX ASPHALT SURFACE COURSE	IL-9.5 "D"	SBS PG 64-28	N70	4.0%

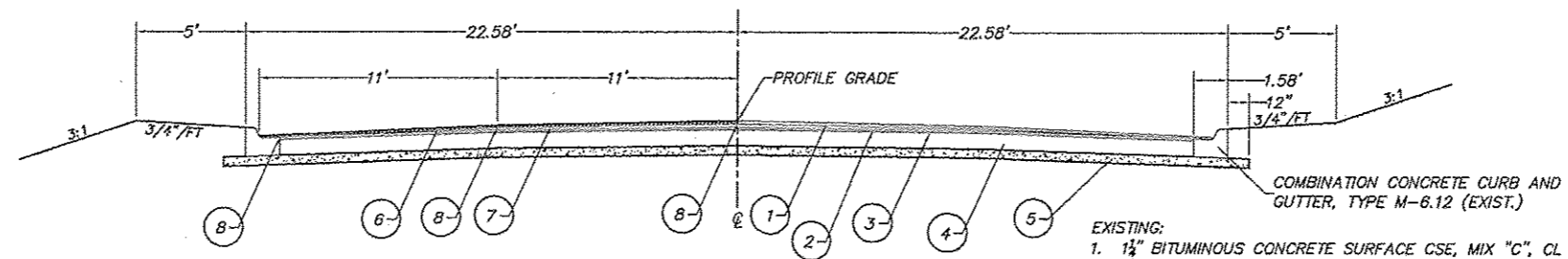
NOTE: HOT-MIX ASPHALT QUANTITIES CALCULATED @ 112 #/SQ YD. / IN.

ABBREV.	PAY ITEM	UNIT
BM TACK	BITUMINOUS MATERIALS (TACK COAT)	POUND
LEV BIND	LEVELING BINDER (MACHINE METHOD), N50	TON
HMA POLY SURF	POLY. HOT-MIX ASPHALT SURFACE COURSE, MIX "D", N70	TON
PCC DRWY	PORTLAND CEMENT CONCRETE DRIVEWAY PAVEMENT (THICKNESS)	SQ YD
C&G REM	CURB & GUTTER REMOVAL	FOOT
DPR	DRIVEWAY PAVEMENT REMOVAL	SQ YD
HMA REM	HOT-MIX ASPHALT SURFACE REMOVAL (DEPTH)	SQ YD
BUTT JOINT	HOT-MIX ASPHALT SURFACE REMOVAL - BUTT JOINT	SQ YD
TEMP RAMP	TEMPORARY RAMP	SQ YD
C&G (ABUT)	COMBINATION CONCRETE CURB & GUTTER, M-6.12 ABUTTING EXISTING PAVEMENT	FOOT
INLET NEW LID	INLET TO BE ADJUSTED WITH NEW LID - SPECIAL	EACH
INLET NEW F&G	INLET TO BE ADJUSTED WITH NEW TYPE 11 FRAME AND GRATE	EACH
INLET RECONST	INLET TO BE RECONSTRUCTED	EACH
MH ADJUST	MANHOLE TO BE ADJUSTED WITH NEW TYPE 1 FRAME, CLOSED LID	EACH
MH RECONST	MANHOLES TO BE RECONSTRUCTED (SPECIAL)	EACH
WV ADJUST	VALVE BOXES TO BE ADJUSTED	EACH



COUNTY	ROUTE	SECTION	SHT. NO.
ADAMS	CO HWY 50	16-00220-00-RS	3
TYPICAL SECTIONS			

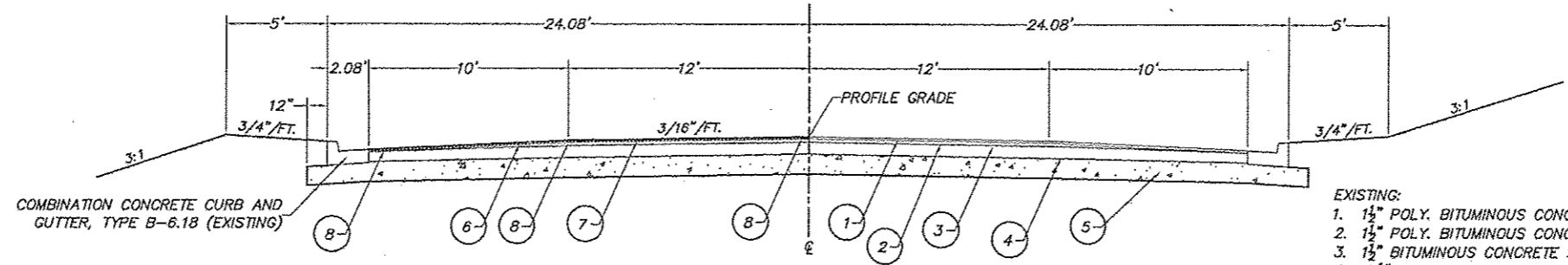
TYPICAL SECTIONS



PROPOSED:
 6. HOT-MIX ASPHALT SURFACE REMOVAL 1 1/4"
 7. 1 1/2" POLYMERIZED HOT-MIX ASPHALT SURFACE COURSE, MIX D, N70
 8. LONGITUDINAL JOINT SEALANT

STA. 2+40.21 TO STA. 26+55.35
STA. 0+00 TO STA. 0+55

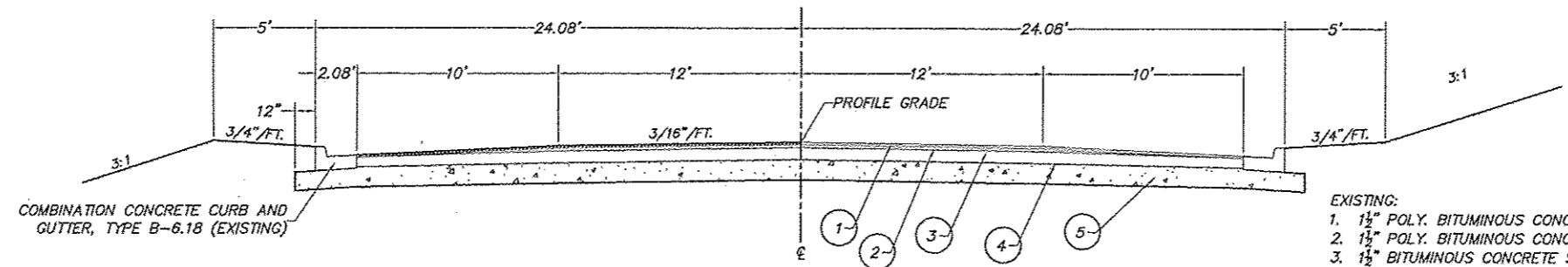
EXISTING:
 1. 1 1/2" BITUMINOUS CONCRETE SURFACE CSE, MIX "C", CL I, TY 2
 2. 1 1/2" BITUMINOUS CONCRETE BINDER CSE, MIX "B", TY 2
 3. 1 1/2" BITUMINOUS CONCRETE SURFACE CSE, CL I
 4. 8 3/4" BITUMINOUS CONCRETE BINDER CSE
 (2 LIFTS @ 2 1/2", 1 LIFT @ 2", 1 LIFT @ 1 3/4")
 5. 5" SUB-BASE GRANULAR MATERIAL, TYPE B



PROPOSED STA. 0+55 - 1+50:
 6. HOT-MIX ASPHALT SURFACE REMOVAL 1 1/4"
 7. 1 1/2" POLYMERIZED HOT-MIX ASPHALT SURFACE COURSE, MIX D, N70
 8. LONGITUDINAL JOINT SEALANT

STA. 0+55 TO STA. 1+50

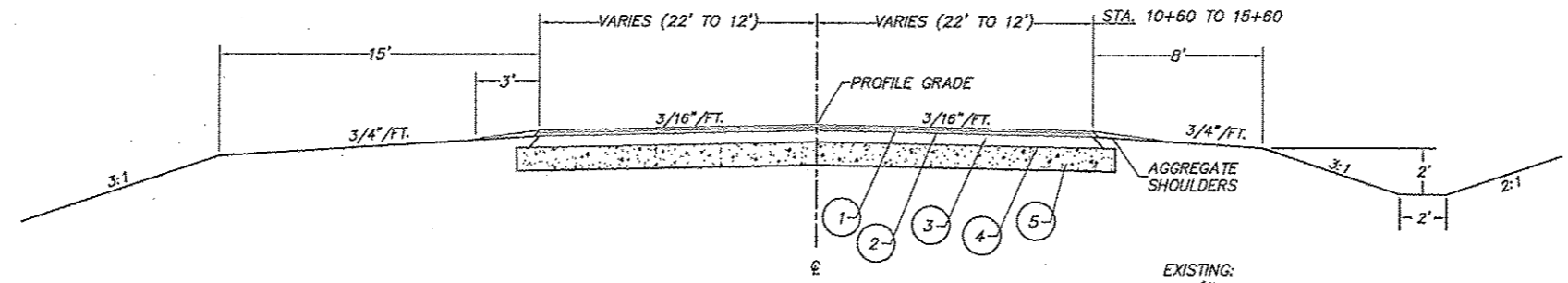
EXISTING:
 1. 1 1/2" POLY. BITUMINOUS CONCRETE SURFACE CSE, MIX "C", CL I, TY 2
 2. 1 1/2" POLY. BITUMINOUS CONCRETE BINDER CSE, MIX "B", TY 2
 3. 1 1/2" BITUMINOUS CONCRETE SURFACE CSE, CL I
 4. 4 1/2" BITUMINOUS CONCRETE BINDER CSE
 5. 12" AGGREGATE BASE COURSE, TYPE A



COMBINATION CONCRETE CURB AND GUTTER, TYPE B-6.18 (EXISTING)

STA. 1+50 TO STA. 10+60

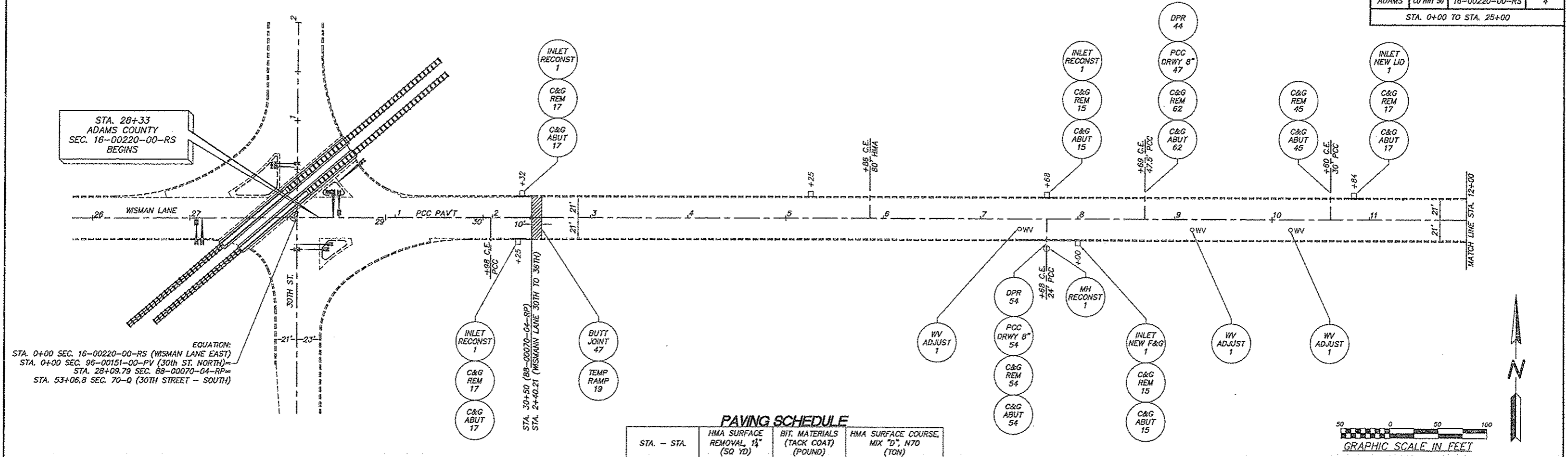
EXISTING:
 1. 1 1/2" POLY. BITUMINOUS CONCRETE SURFACE CSE, MIX "C", CL I, TY 2
 2. 1 1/2" POLY. BITUMINOUS CONCRETE BINDER CSE, MIX "B", TY 2
 3. 1 1/2" BITUMINOUS CONCRETE SURFACE CSE, CL I
 4. 4 1/2" BITUMINOUS CONCRETE BINDER CSE
 5. 12" AGGREGATE BASE COURSE, TYPE A



STA. 10+60 TO STA. 15+60

EXISTING:
 1. 1 1/2" POLY. BITUMINOUS CONCRETE SURFACE CSE, MIX "C", CL I, TY 2
 2. 1 1/2" POLY. BITUMINOUS CONCRETE BINDER CSE, MIX "B", TY 2
 3. 1 1/2" BITUMINOUS CONCRETE SURFACE CSE, CL I
 4. 4 1/2" BITUMINOUS CONCRETE BINDER CSE
 5. 12" AGGREGATE BASE COURSE, TYPE A

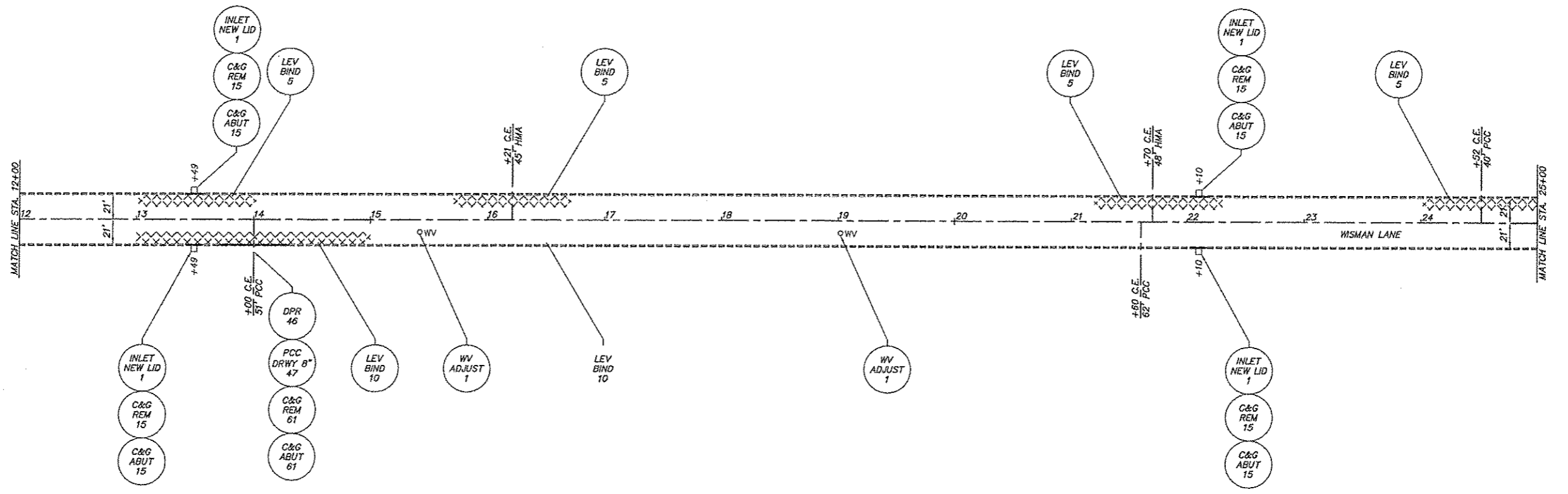
COUNTY	ROUTE	SECTION	SHT. NO.
ADAMS	CO HWY 50	16-00220-00-RS	4
STA. 0+00 TO STA. 25+00			



EQUATION:
 STA. 0+00 SEC. 16-00220-00-RS (WISMAN LANE EAST)
 STA. 0+00 SEC. 96-00151-00-PV (30th ST. NORTH)
 STA. 28+05.79 SEC. 88-00070-04-RP
 STA. 53+06.8 SEC. 70-Q (30TH STREET - SOUTH)

PAVING SCHEDULE

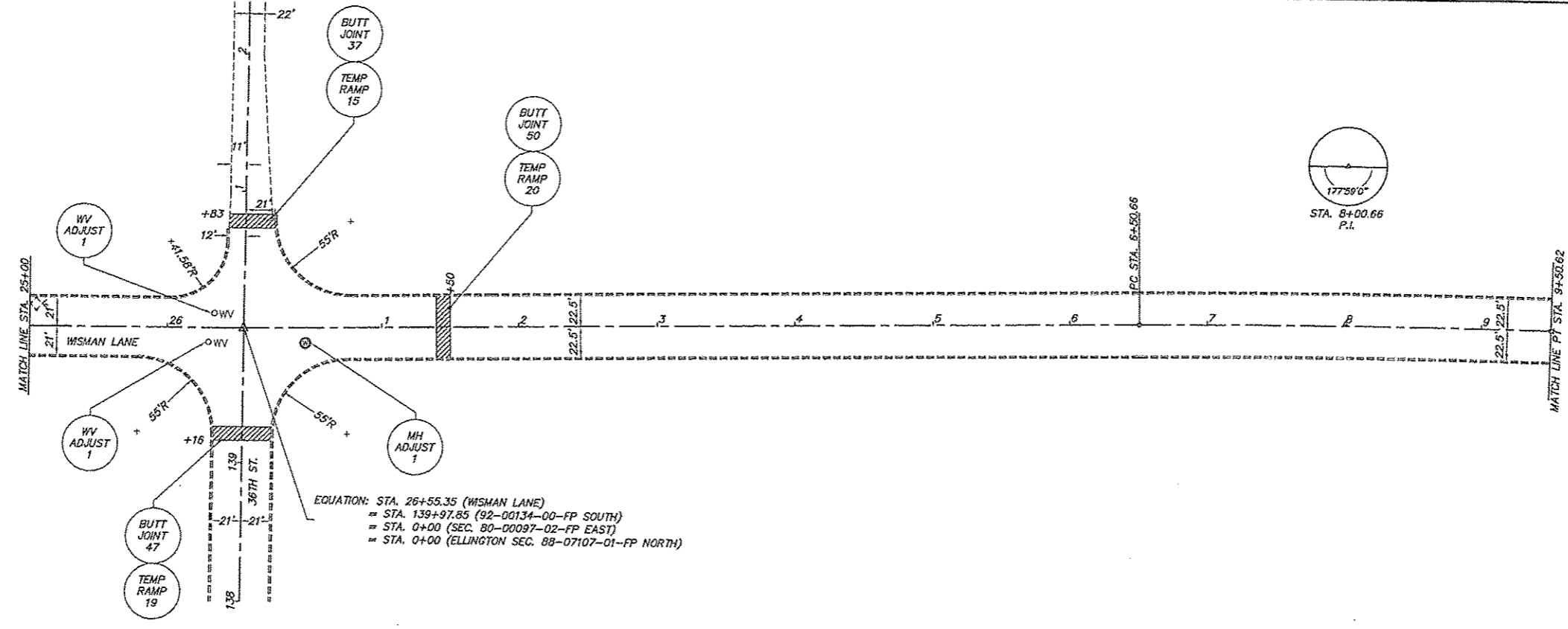
STA. - STA.	HMA SURFACE REMOVAL, 1 1/2" (SQ YD)	BIT. MATERIALS (TACK COAT) (POUND)	HMA SURFACE COURSE, MIX "D", N70 (TON)
2+40 - 12+00	4,644	2,112	405
12+00 - 25+00	6,356	2,860	550
25+00 - 1+50	2,180	1,040	205
TOTAL	13,180	6,012	1,160



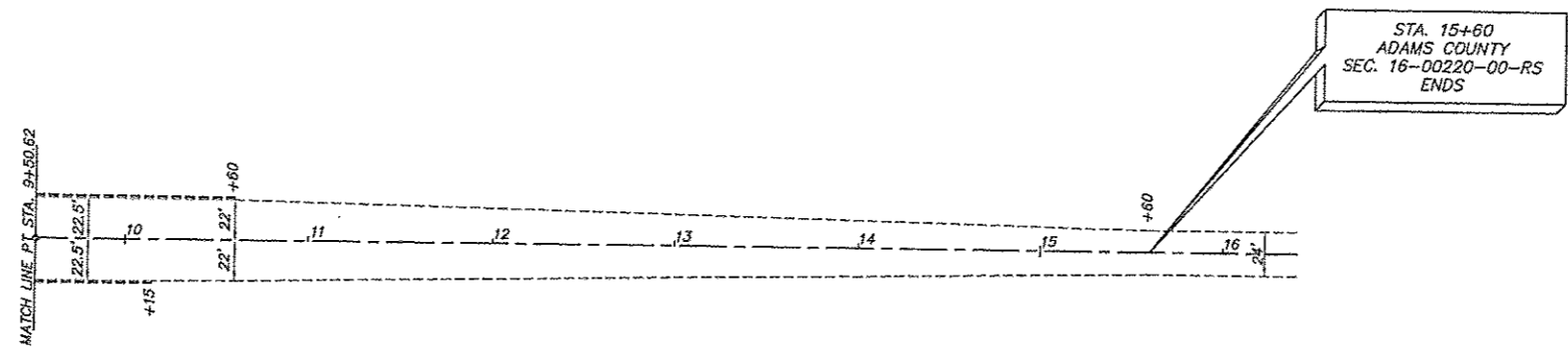
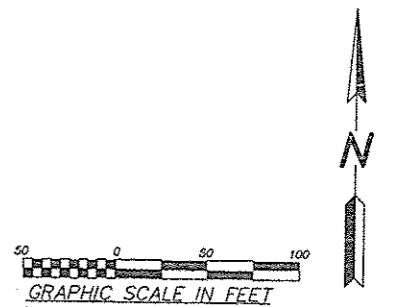
CONTRACT NO. 93680

COUNTY	ROUTE	SECTION	SHT. NO.
ADAMS	CO HWY 80	16-00220-00-RS	5

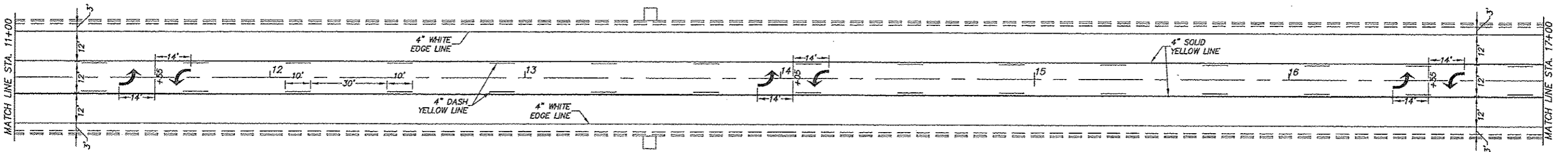
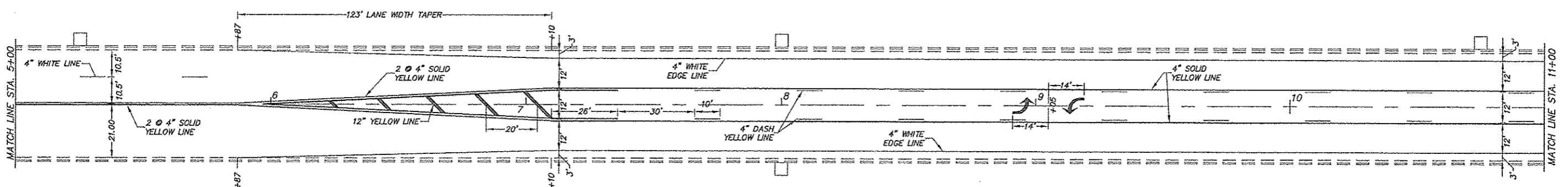
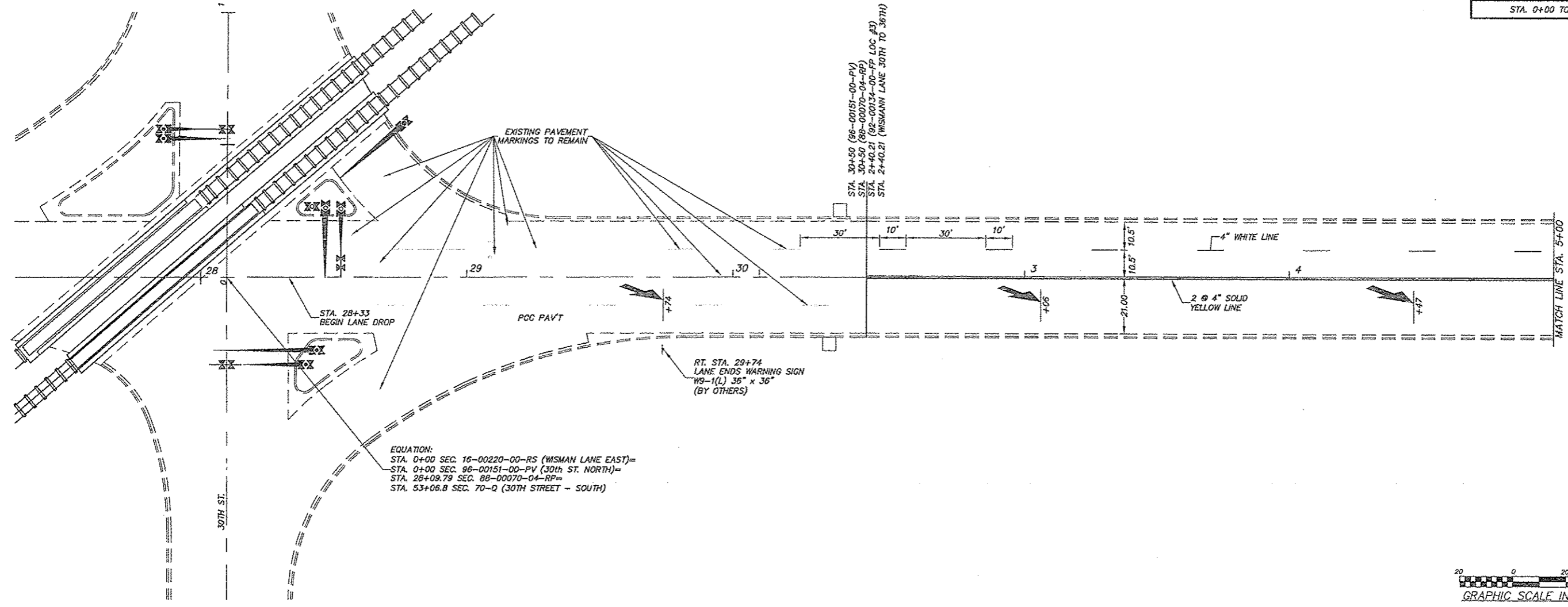
STA. 25+00 TO STA.



CURVE DATA:
P.I. STA. 8+00.66
 $\Delta=201'$
 $D=0'40''20''$
 $T=150.00'$
 $R=8522.46'$
 $L=299.96'$
 $E=1.32'$
P.C. STA. 6+50.66
P.T. STA. 9+50.62

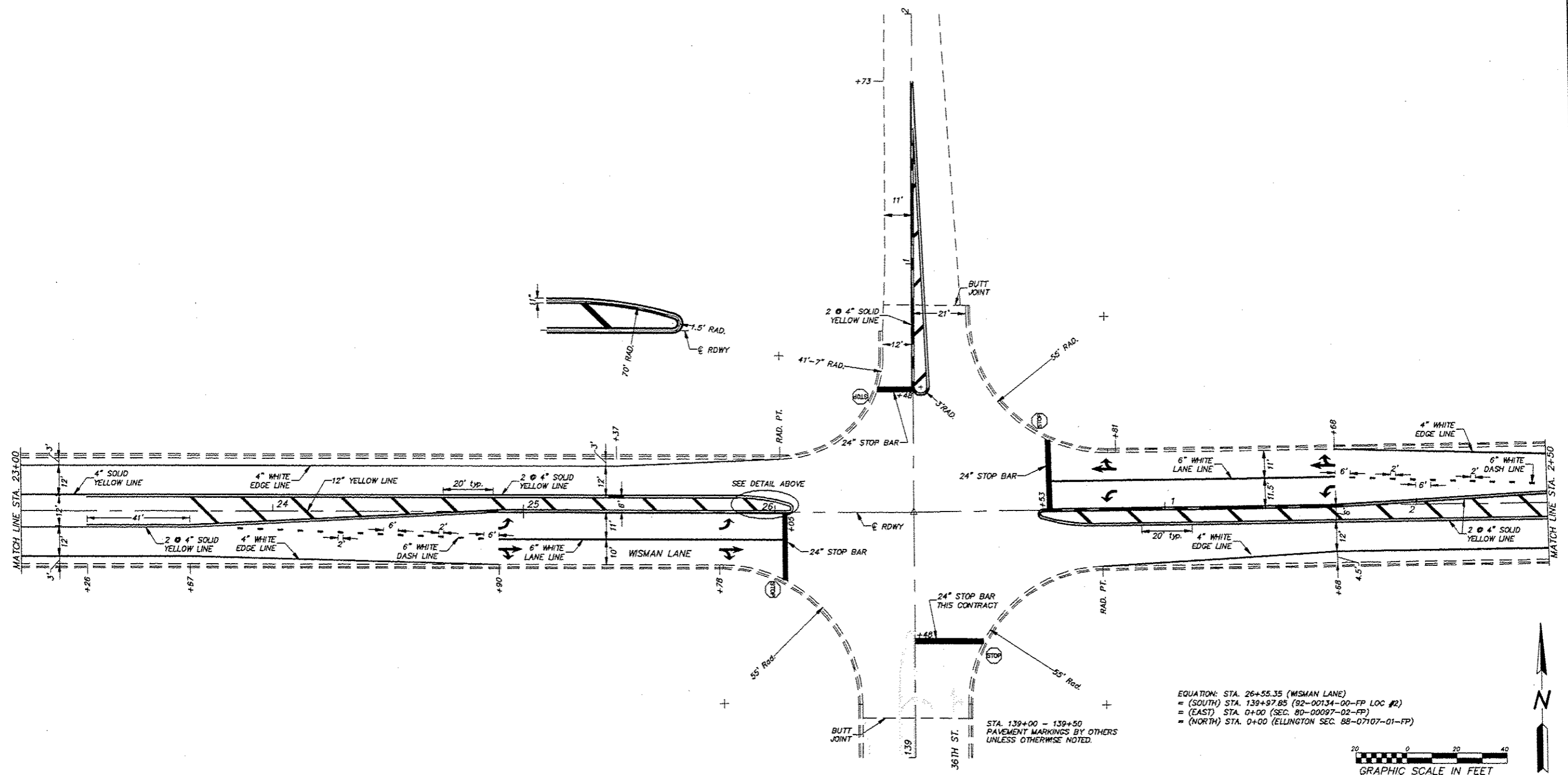
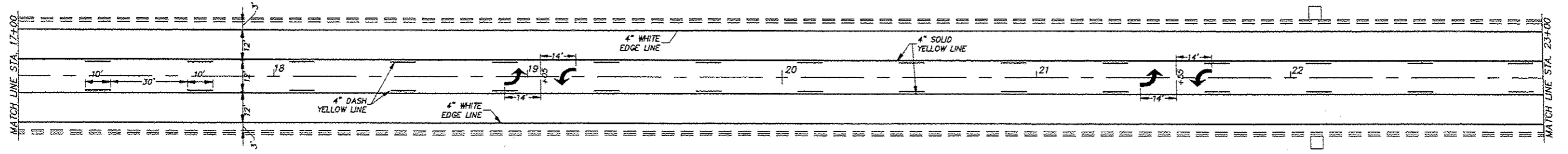


COUNTY	ROUTE	SECTION	SHT. NO.
ADAMS	00 HWY 50	16-00220-00-RS	6
STA. 0+00 TO STA. 25+00			

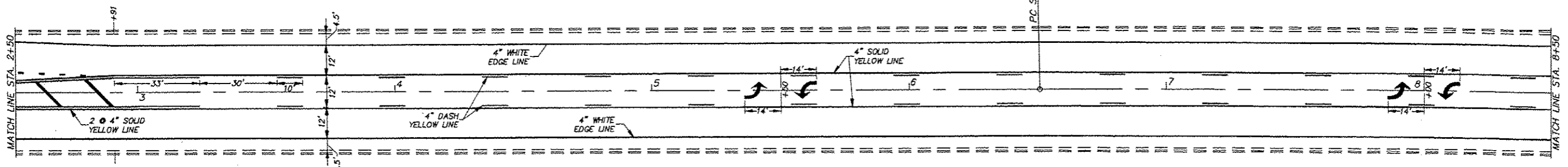


CONTRACT NO. 93690

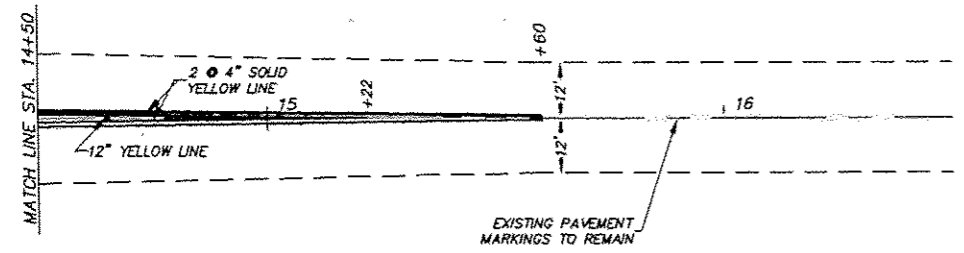
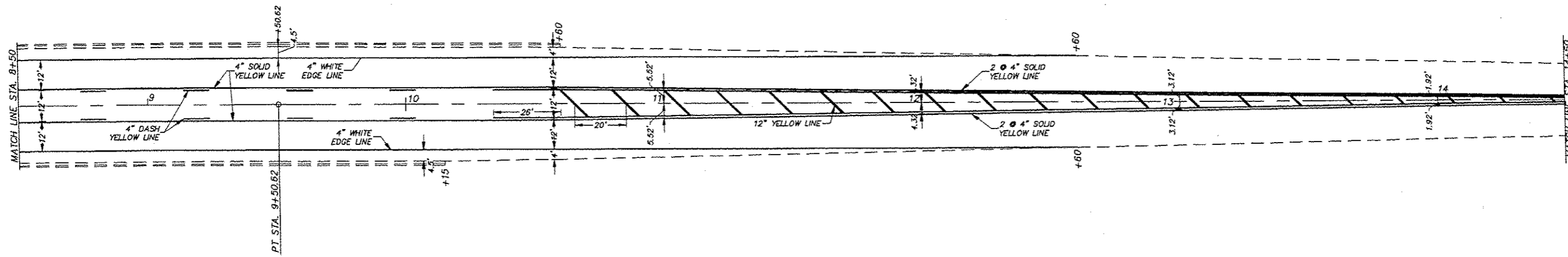
COUNTY	ROUTE	SECTION	SHT. NO.
ADAMS	CO HWY 50	16-00220-00-RS	7
STA. 0+00 TO STA. 25+00			



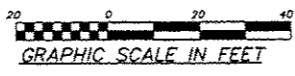
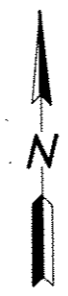
CONTRACT NO. 93690			
COUNTY	ROUTE	SECTION	SHT. NO.
ADAMS	CO HWY 50	16-00220-00-RS	8
STA. 0+00 TO STA. 25+00			



CURVE DATA:
P.I. STA. 8+00.66
 $\Delta = 2'01''$
 $D = 0'40'20''$
 $T = 150.00'$
 $R = 8522.46'$
 $L = 299.96'$
 $E = 1.32'$
P.C. STA. 6+50.66
P.T. STA. 9+50.62



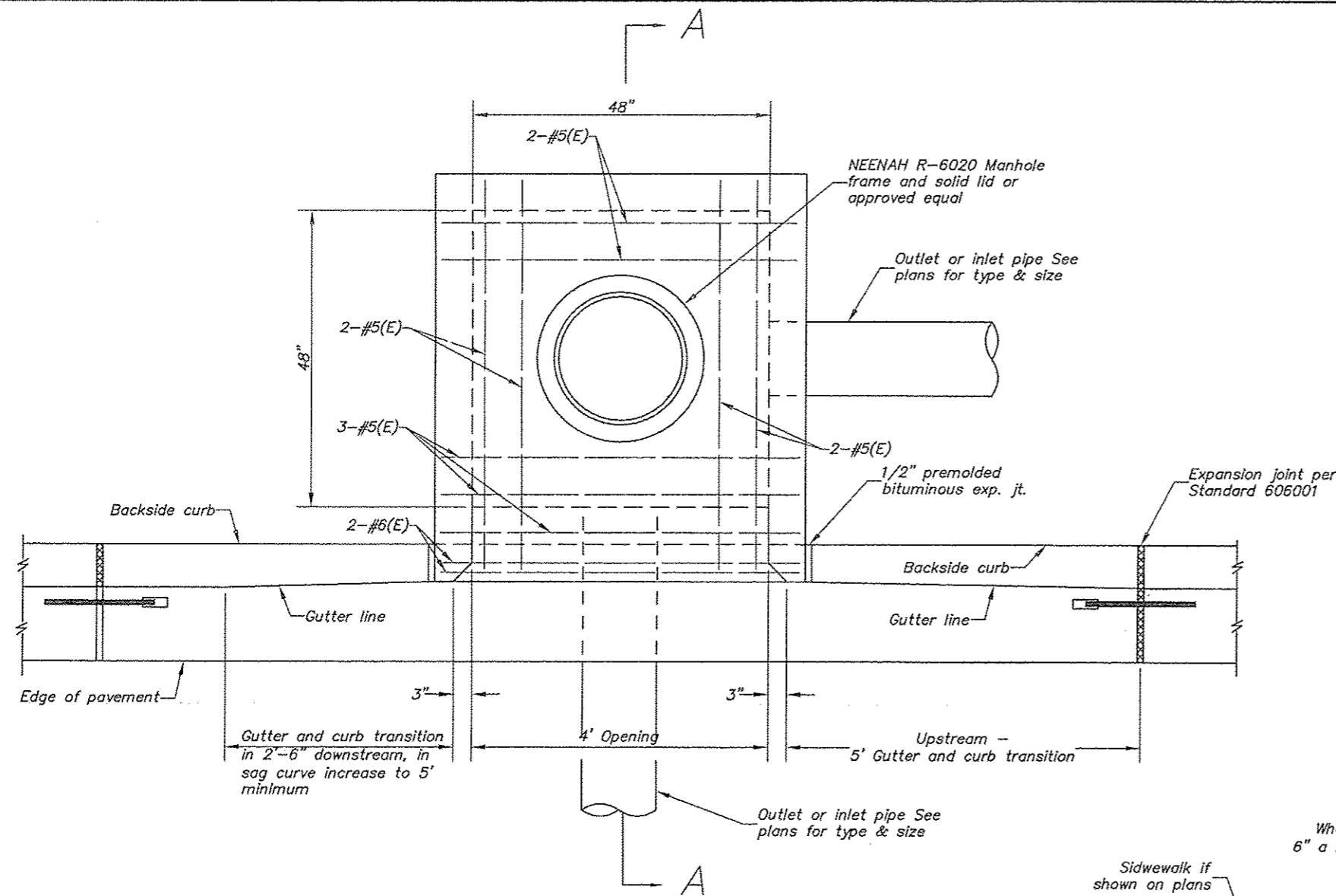
EXISTING PAVEMENT MARKINGS TO REMAIN



PAVEMENT MARKING + REMOVAL

STA. - STA.	THERMOPLASTIC PAVEMENT MARKINGS								LETTERS & SYMBOLS SQ. FT.	PAVEMENT MARKING REMOVAL SQ. FT.
	LINE 4" YELLOW (SOLID)	LINE 4" YELLOW (DASHED)	LINE 4" WHITE (SOLID)	LINE 4" WHITE (DASHED)	LINE 6" WHITE (SOLID)	LINE 6" WHITE (DASHED)	LINE 12" YELLOW	LINE 24" WHITE		
	FOOT	FOOT	FOOT	FOOT	FOOT	FOOT	FOOT	FOOT		
28+33 - 5+00	530			70					124.5	
5+00 - 11+00	1,478	180	1,026			45			31.2	
11+00 - 17+00	1,200	300	1,200						93.6	
17+00 - 23+00	1,200	300	1,200						62.4	
23+00 - 26+55.35	1,178		492		115	26	111	27	83.2	
0+00 - 2+50	816		263		116	20	83	28	83.2	
2+50 - 8+50	1,338	260	1,195			8	28		62.4	500
8+50 - 14+50	2,032	80	620				173			447
14+50 - 16+50	336									73
36th STREET (NORTH)	475						19	15		7
36th STREET (SOUTH)								27		
SUBTOTAL	10,583	1,120	5,996	70	230	54			540.5	1,107
TOTAL			17,769			284	459	97		

CONTRACT NO. 93690			
COUNTY	ROUTE	SECTION	SHT. NO.
ADAMS	CO HWY 50	16-00220-00-RS	9
INLET, SPECIAL, TYPE E			



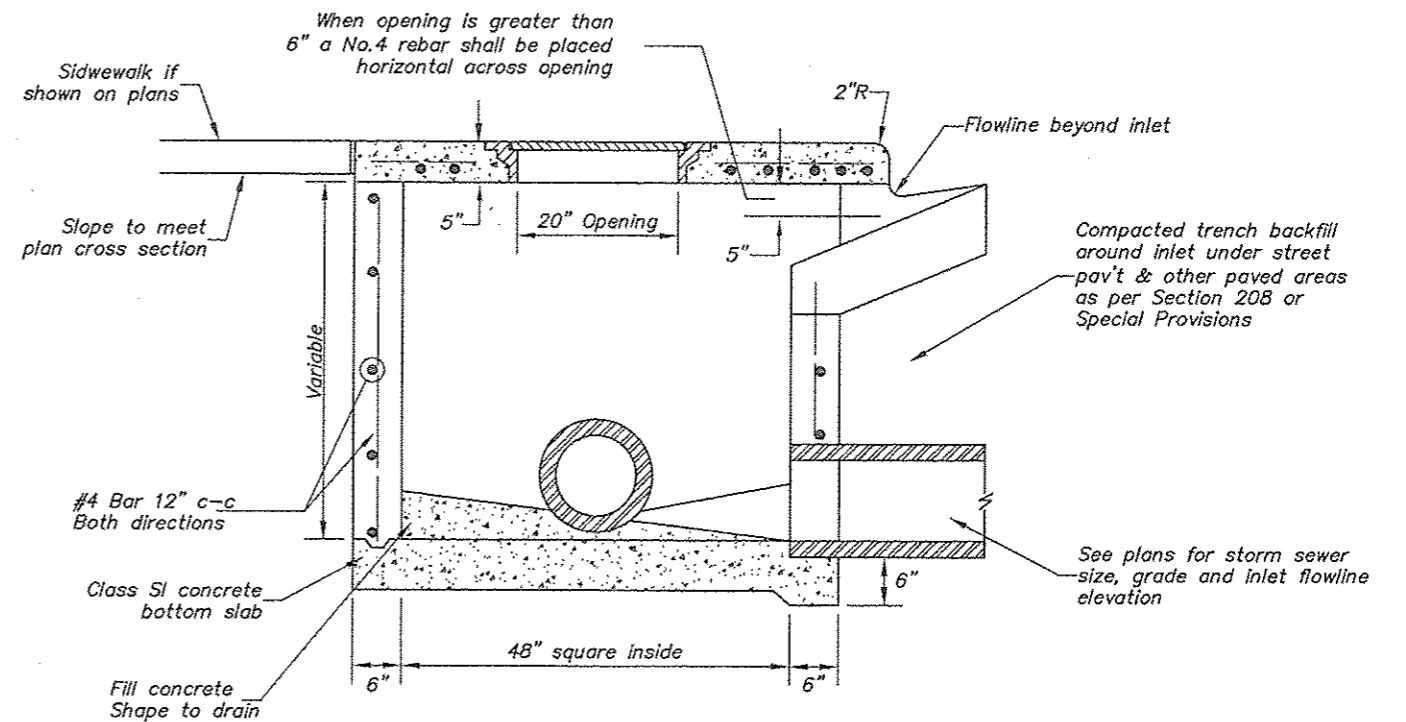
PLAN

INLET, SPECIAL, TYPE E

NTS

NOTES:

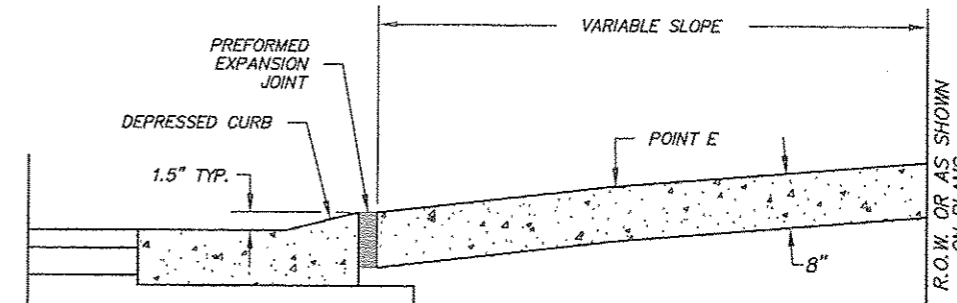
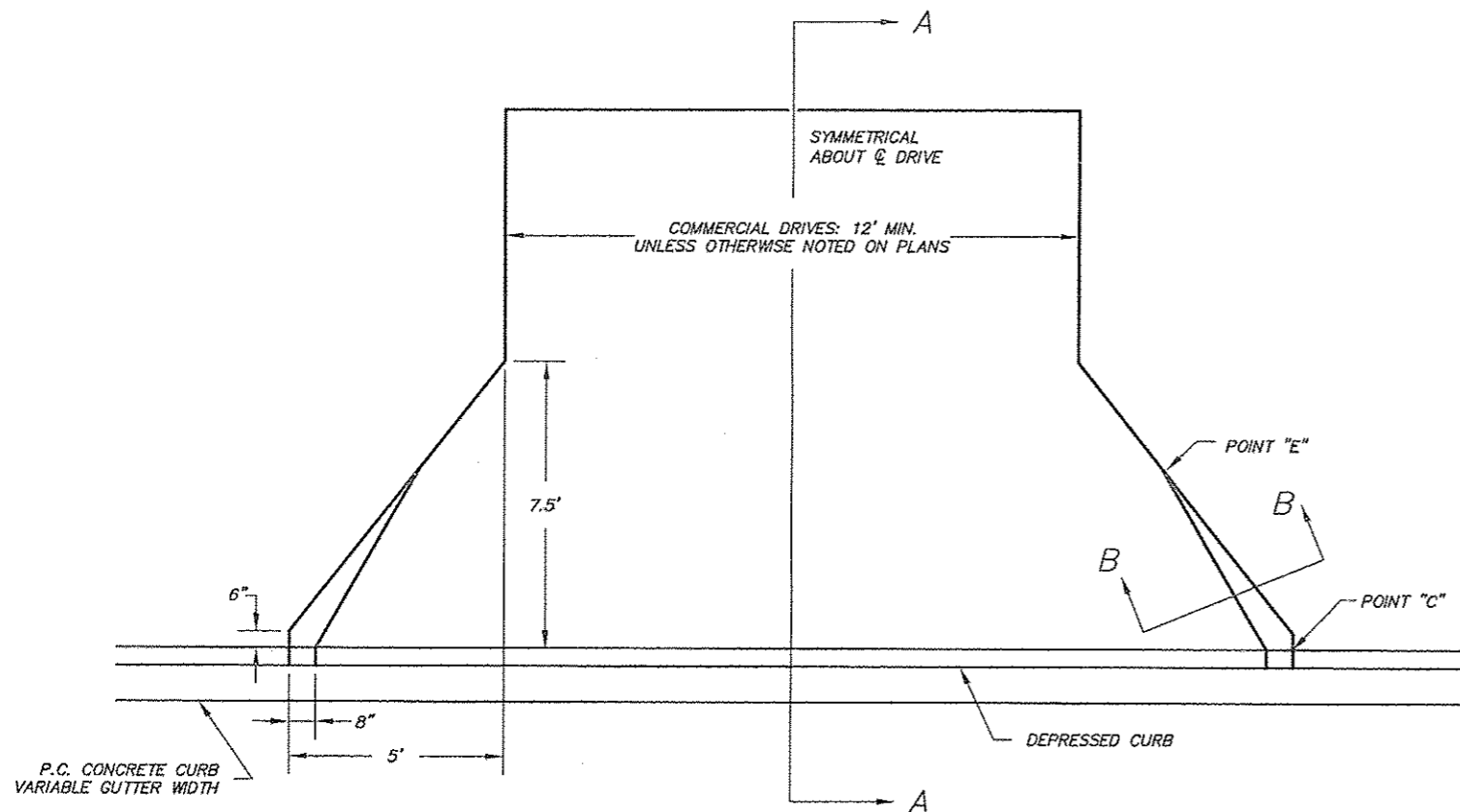
1. The contract unit price for INLET, SPECIAL, TYPE E shall include the cost of the lid as shown, the reinforced concrete cover, a sand cushion when required, excavation and furnishing and compacting the specified backfill material. Additionally it will be necessary to meet all other requirements of Section 602 of the Standard Specifications.
2. Front edge of top slab shall conform with the radius of adjacent curb where inlet is located within curb returns at intersections.
3. #4 rebar shall be placed horizontally & vertically at 12" centers in walls all around, with 18" x 18" L bars at corners.
4. Cost of reinforcing bars incidental.
5. Bars noted (E) shall be epoxy coated.
6. When inlet top is not cast in place, top shall be placed in a full bed of mortar.



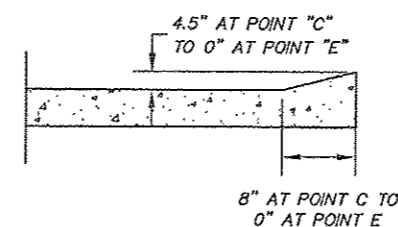
SECTION A-A

COUNTY	ROUTE	SECTION	SHT. NO.
ADAMS	03 HWY 50	16-00220-00-RS	10
COMMERCIAL DRIVEWAYS			

COMMERCIAL DRIVEWAY STANDARD



SECTION A-A

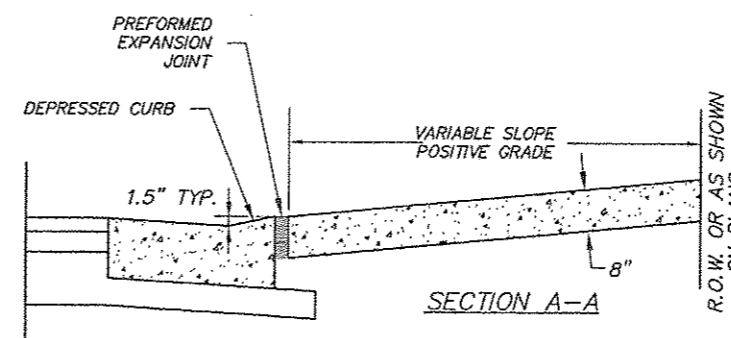
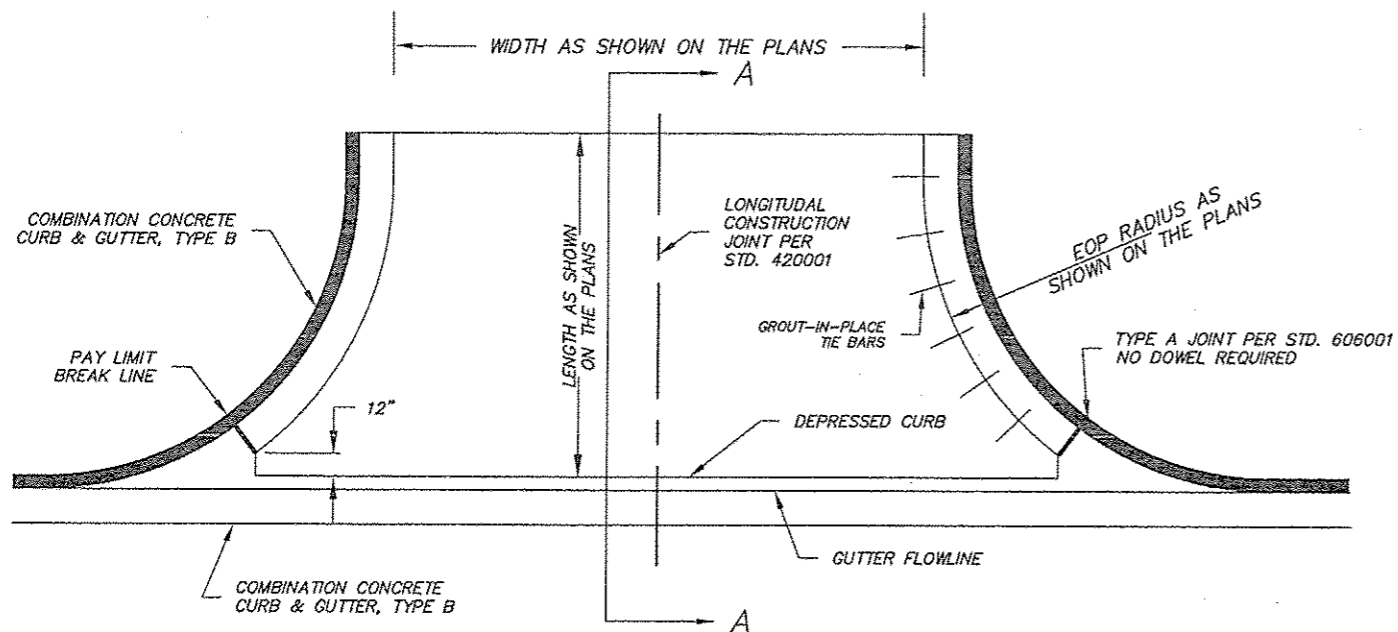


SECTION B-B

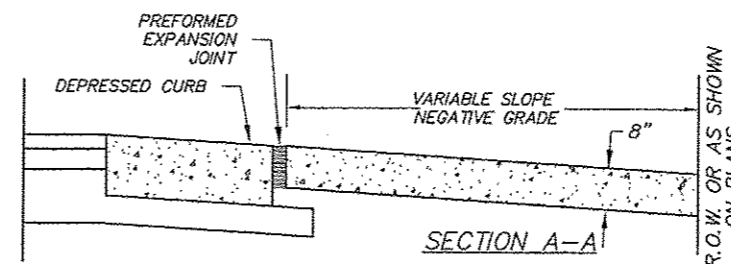
NOTES:

1. CLASS PV CONCRETE SHALL BE USED THROUGH-OUT.
2. THE INSTALLATION OF 1/2" PREFORMED EXPANSION JOINTS WHERE REQUIRED SHALL BE INCLUDED IN THE UNIT PRICE BID FOR P.C.C. CONCRETE DRIVEWAY PAVEMENT.
3. THE UNIT PRICE BID FOR THIS ITEM SHALL INCLUDE THE FURNISHING OF ALL LABOR AND MATERIALS NECESSARY TO CONSTRUCT THE P.C.C. DRIVEWAY PAVEMENT.
4. DRIVEWAY MAY REQUIRE A SLOPE CHANGE AT DETERMINED DISTANCES BEHIND CURB FOR SIDEWALK OR DRAINAGE CORRECTIONS DUE TO EXCESSIVE OR INADEQUATE SLOPE OF STRAIGHT LINE GRADE.
5. COST OF CONSTRUCTING A SLOPE CHANGE IF NECESSARY AND ALL JOINTING SHALL BE INCIDENTAL TO THE COST PER SQUARE YARD OF P.C.C. DRIVEWAY PAVEMENT.
6. REFER TO CROSS SECTIONS FOR DRIVEWAY GRADES.
7. REFER TO PLAN AND PROFILE SHEETS FOR DRIVEWAY WIDTHS OR MATCH EXISTING.
8. SAW OR SCRATCH JOINTS IN EACH ENTRANCE SO THAT NO SECTION REMAINS LARGER THAN 12 FEET IN ANY DIMENSION, UNLESS OTHERWISE NOTED.
9. MAXIMUM WIDTH OF A DRIVEWAY ENTRANCE AT THE RIGHT-OF-WAY LINE SHALL BE THIRTY (30) FEET UNLESS OTHERWISE NOTED.
10. THE COMBINATION CONCRETE CURB AND GUTTER SHALL BE CONSTRUCTED IN ACCORDANCE WITH SECTION 606 OF THE STANDARD SPECIFICATIONS. THE COMB. C&G WILL BE MEASURED IN PLACE AND PAID FOR AT THE CONTACT UNIT PRICE PER FOOT.
11. ALL REINFORCEMENT BARS ARE TO BE EPOXY COATED. SUPPORT PINS FOR THE TIE BARS, WHEN REQUIRED, SHALL BE OF A SIZE AND STRENGTH SUFFICIENT TO HOLD THE BAR IN PLACE.
12. GROUTED-IN-PLACE TIE BARS SHALL BE No. 6 x 24" DEFORMED STEEL TIE BARS INSTALLED AT 24" CENTERS.

COMMERCIAL DRIVEWAY STANDARD (CURBED)



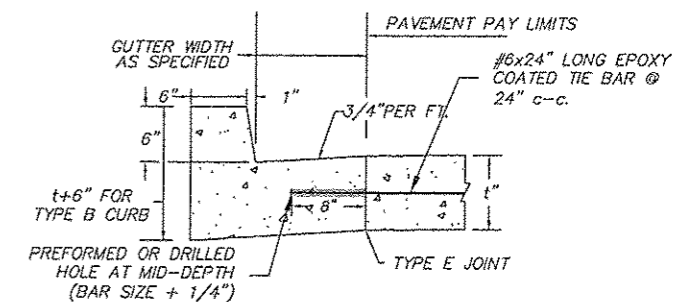
SECTION A-A



SECTION A-A

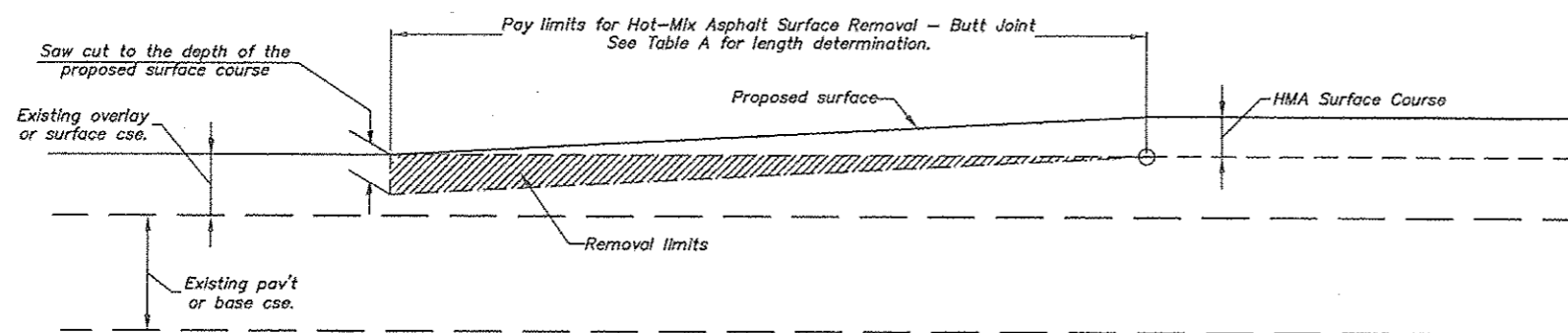
COMBINATION CURB & GUTTER
GROUTED-IN-PLACE TIE BARS SHALL BE USED.

SEPARATE CURB AND GUTTER

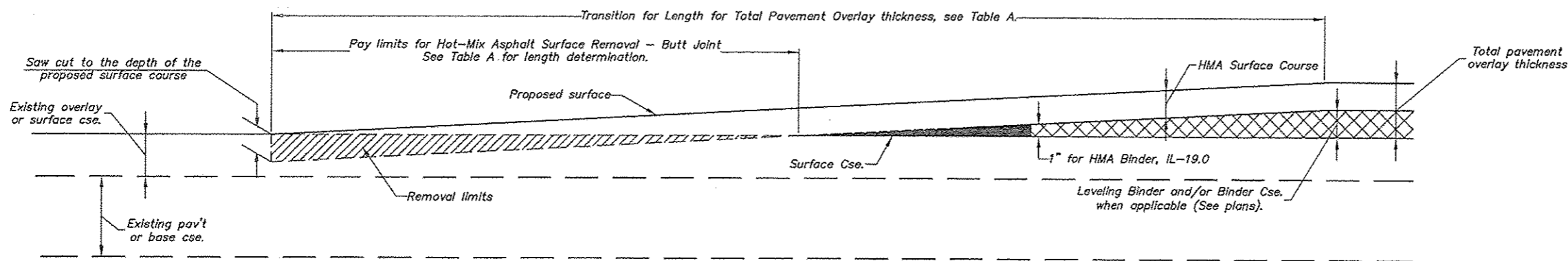


COUNTY	ROUTE	SECTION	SHT. NO.
ADAMS	CO HWY 50	16-00220-00-RS	11

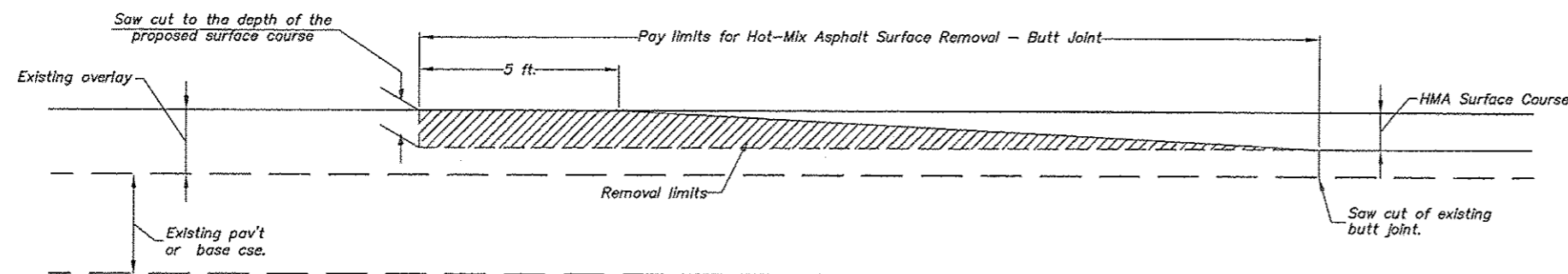
BUTT JOINT DETAILS



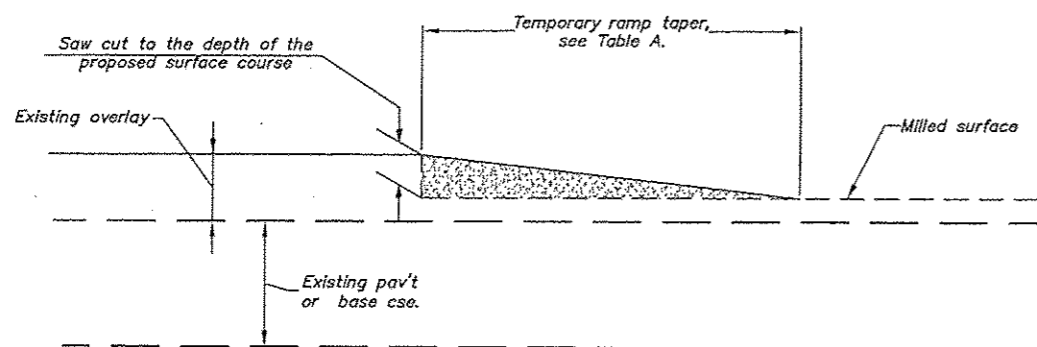
CASE 1: BUTT JOINT w/ SURFACE OVERLAY



CASE 1A: BUTT JOINT w/ SURFACE & BINDER OVERLAY



CASE 1B: BUTT JOINT w/ SURFACE OVERLAY TIE-IN TO EXISTING BUTT JOINT



TEMPORARY RAMP DETAIL

General Notes

1. The work shall be done in accordance with Article 406.08 and the Special Provision for Butt Joints.
2. The pavement surface to be removed may be either HMA or P.C. concrete. The work shall be performed in accordance with Article 440.04 and the Special Provisions for Butt Joints.
3. The saw cut joints shall be primed just prior to the placing of HMA material. The work will be in accordance with the applicable portions of Article 406.05.

TABLE A - TAPER RATES

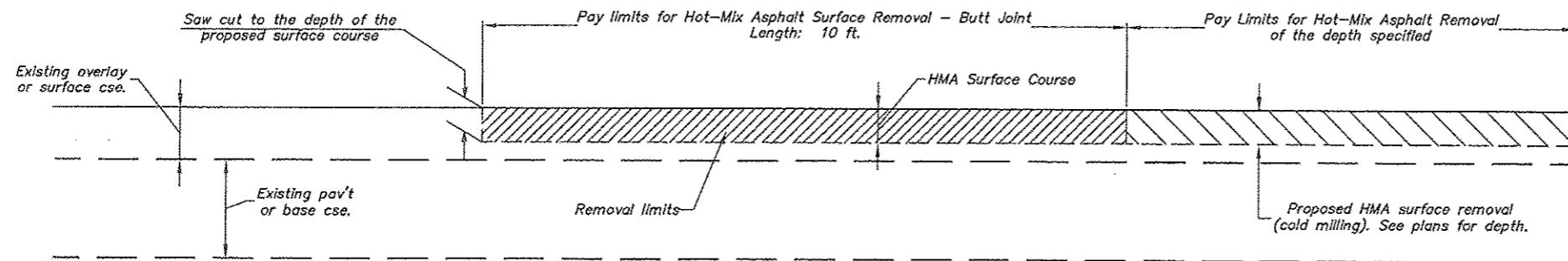
ELEMENT	POSTED SPEED < 45 MPH	POSTED SPEED => 45 MPH
BUTT JOINT	20' per 1" of DEPTH	30' per 1" of DEPTH
FEATHEREDGE	20' per 1" of THICKNESS	30' per 1" of THICKNESS LESS 3/8" from TOTAL
TEMPORARY RAMP	3' per 1" of HEIGHT	4' per 1" of DEPTH

Length of butt joint = Thickness of Surface Cse multiplied by the Taper Rate.
 Length of Pav't Transition = Total Pav't thickness multiplied by the Taper Rate.

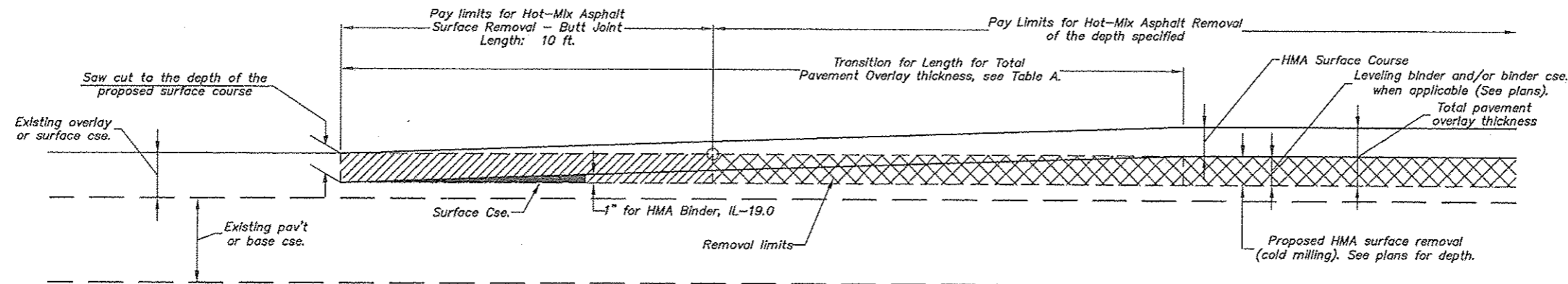
**BUTT JOINTS
FEATHER-EDGE TRANSITION**

COUNTY	ROUTE	SECTION	SHT. NO.
ADAMS	00 HWY 50	16-00220-00-RS	12

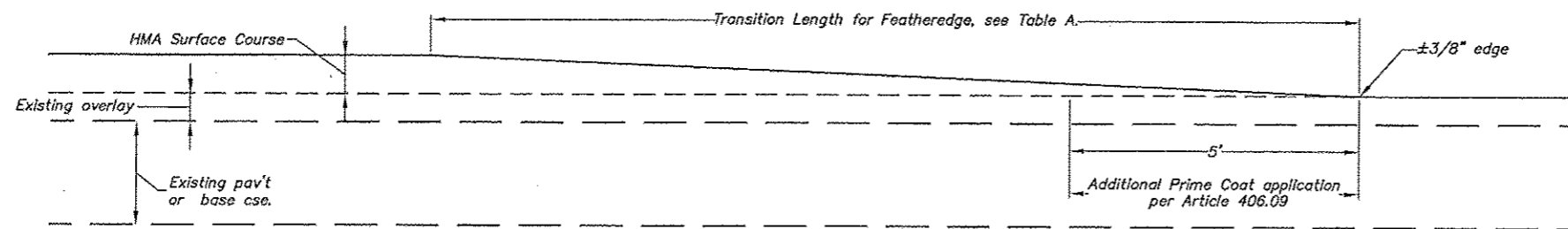
BUTT JOINT DETAILS



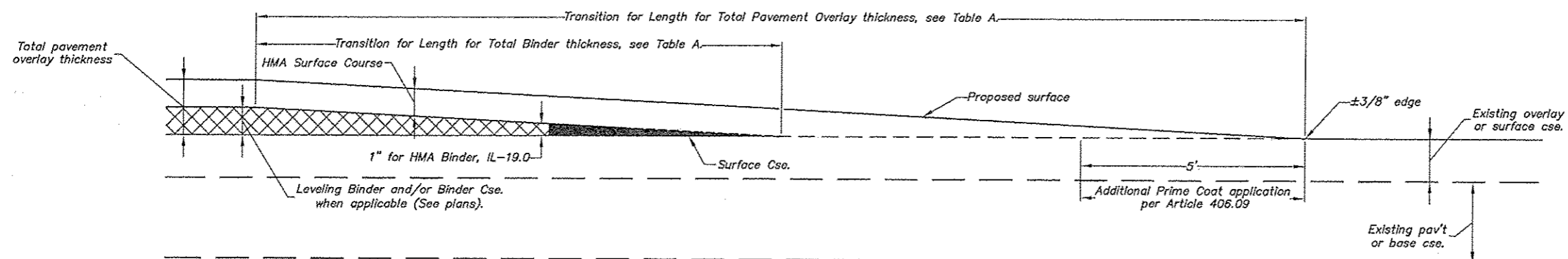
CASE 2: BUTT JOINT & SURFACE REMOVAL w/ RESURFACING



CASE 2A: BUTT JOINT & SURFACE REMOVAL w/ BINDER & RESURFACING



FEATHEREDGE APPROACH - SURFACE CSE

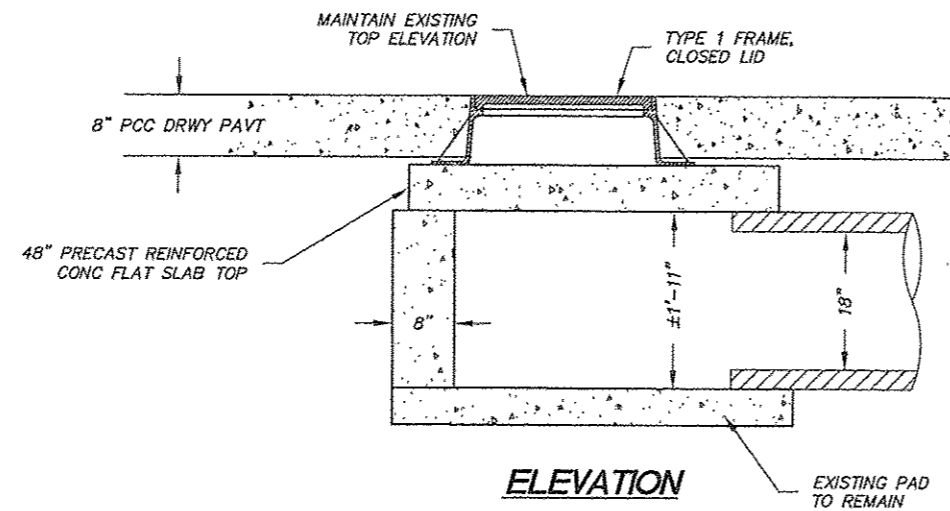
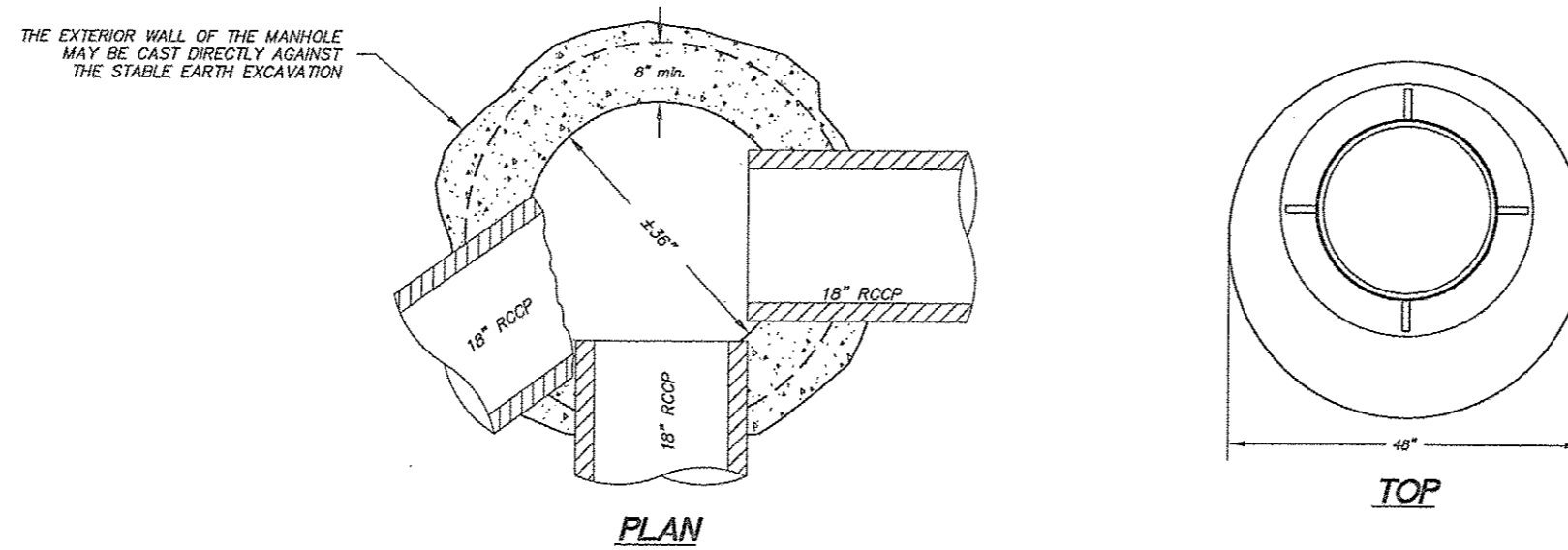


FEATHEREDGE APPROACH - SURFACE & BINDER CSE

**BUTT JOINTS
FEATHER-EDGE TRANSITION**

COUNTY	ROUTE	SECTION	SHT. NO.
ADAMS	CD HWY 50	16-00220-00-RS	13
MANHOLES TO BE RECONSTRUCTED			

MANHOLES TO BE RECONSTRUCTED

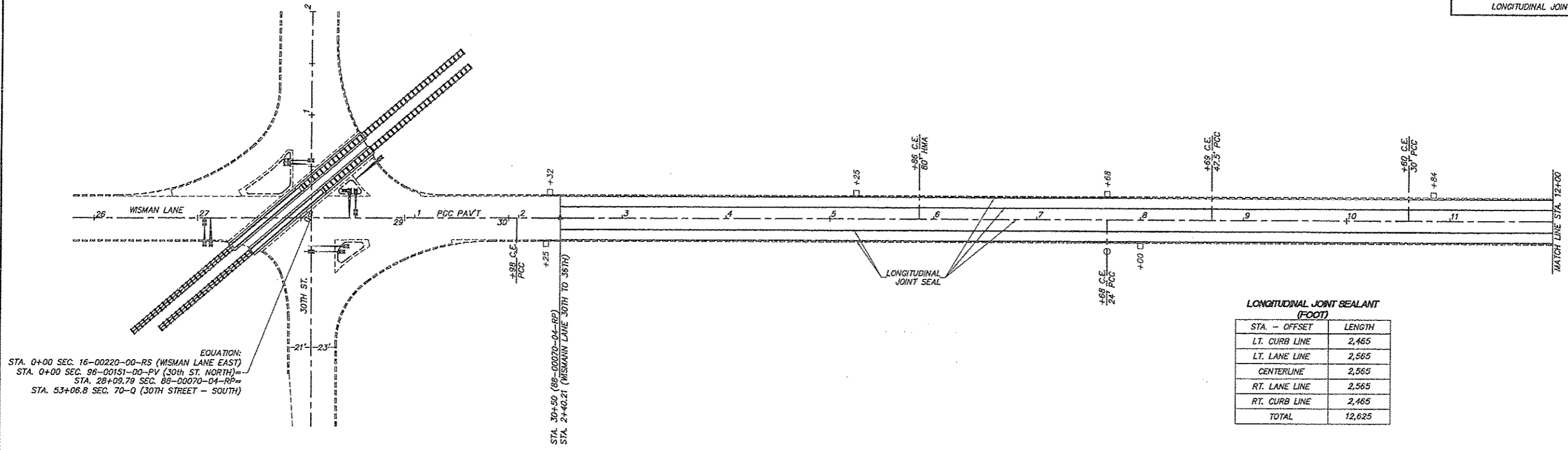


NOTES:

1. THE WORK SHALL BE DONE IN ACCORDANCE WITH ALL APPLICABLE PORTIONS OF SECTION 602 OF THE STANDARD SPECIFICATIONS.
2. ANY REINFORCEMENT BARS, CLASS SI CONCRETE, CONCRETE ADJUSTING RINGS, PRECAST CONCRETE FLAT SLAB TOP AND THE SPECIFIED FRAME AND LID SHALL BE CONSIDERED AS INCLUDED IN THE CONTRACT UNIT PRICE PER EACH FOR MANHOLES TO BE RECONSTRUCTED.
3. FINAL ADJUSTMENT OF THE FRAME AND LID TO BE DONE PRIOR TO PLACING THE PCC DRIVEWAY PAVEMENT CONCRETE. THE MANHOLE FRAME SHALL BE SET TO GRADE IN A FULL MORTAR BED PRIOR TO THE PLACEMENT OF CONCRETE AROUND THE FRAME.

COUNTY	ROUTE	SECTION	SHT. NO.
ADAMS	CO HWY 80	16-00220-00-RS	14

LONGITUDINAL JOINT SEAL



LONGITUDINAL JOINT SEALANT (FOOT)

STA. - OFFSET	LENGTH
LT. CURB LINE	2,465
LT. LANE LINE	2,565
CENTERLINE	2,565
RT. LANE LINE	2,565
RT. CURB LINE	2,465
TOTAL	12,625

