

Illinois Department of Transportation

Division of Aeronautics

1 Langhorne Bond Drive / Capital Airport / Springfield, Illinois / 62707-8415

July 26, 2016

SUBJECT: Williamson County Regional Airport
Marion, Illinois
Williamson County
Illinois Project Number: MWA-4480
SBG Project Number: 3-17-0065-3316
Contract No. WI057
Item No. 6A, July 29, 2016 Letting
Addendum A

NOTICE TO PROSPECTIVE BIDDERS

Attached is an addendum to the plans or proposal. This addendum involves revised and/or added material.

Reason for Addendum: Construction Plan Clarification.

There are no quantity changes associated with this addendum. This addendum has been issued to correct sign sizes which were inadvertently listed wrong in the sign schedules on plan sheets 12 and 14.

To All Plan Holders:

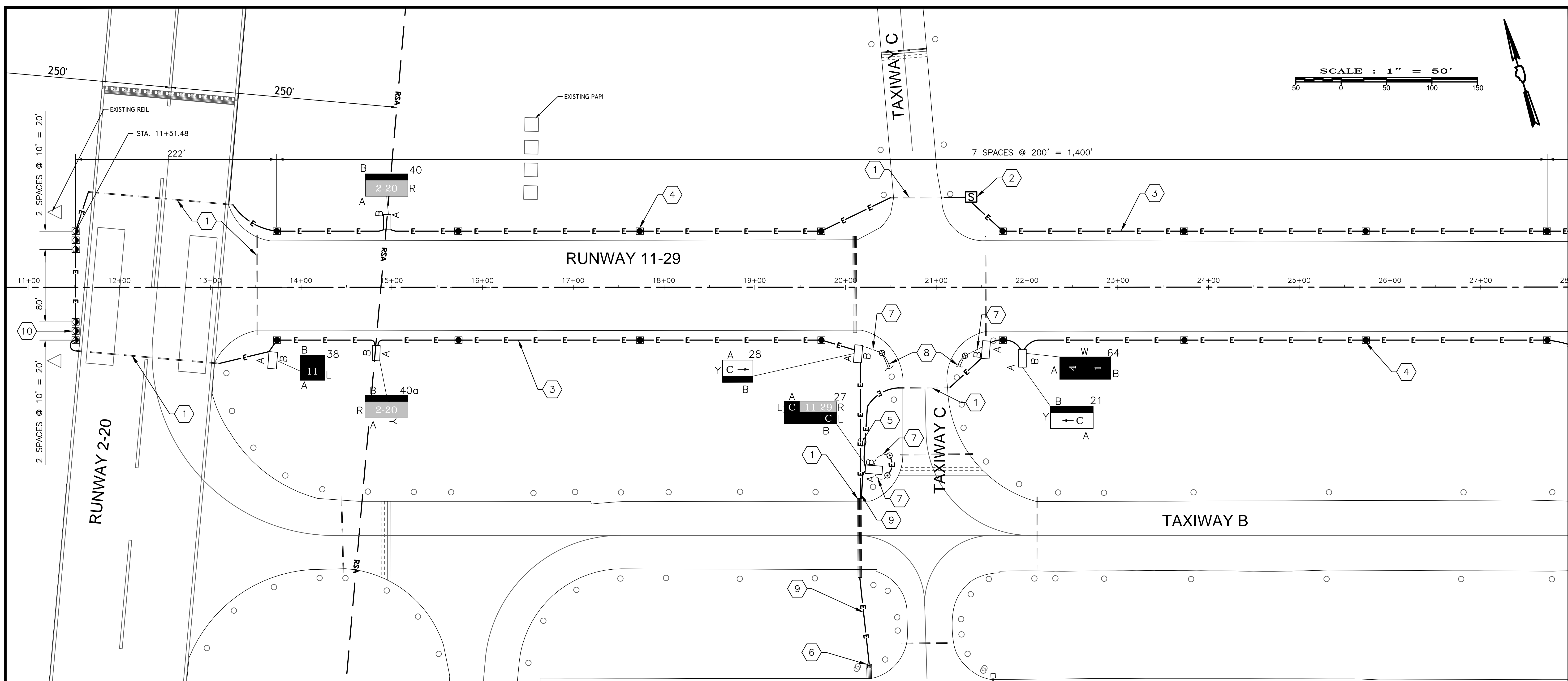
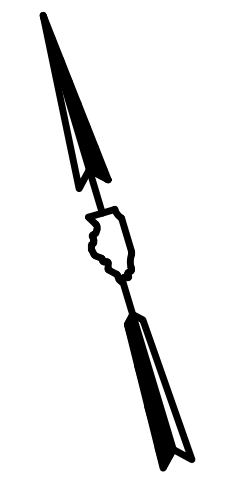
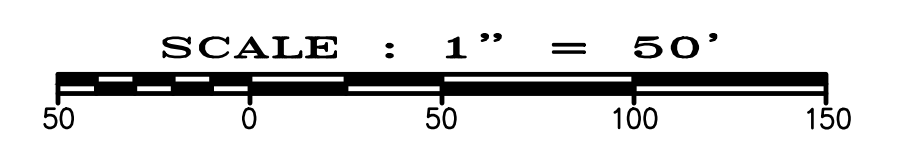
Replace Sheet 12 with revised Sheet 12, revision date 7/22/16.
- Sign 40 and 40A sign size changed in Sign Schedule

Replace Sheet 14 with revised Sheet 14, revision date 7/22/16.
- Sign 67 sign size changed in Sign Schedule

Prime contractors must utilize the enclosed material when preparing their bid and must include any Schedule of Prices changes in their bidding proposal.

Bidders using computer-generated bids are cautioned to reflect any and all Schedule of Prices changes, if involved, into their computer programs.

Questions on this addendum may be directed to Matthew Wiggins of Clarida & Ziegler Engineering Company at (618) 993-6411.



- PLAN NOTES**
- LOCATE AND EXPOSE ENDS OF EXISTING DUCT FOR ADDITION OF PROPOSED CABLES. HAND-EXCAVATE AS NECESSARY TO AVOID DAMAGE TO EXISTING CABLES. DISCONNECT AND REMOVE EXISTING CABLES FOR CIRCUITS TO BE REPLACED.
 - SPLICE RUNWAY CABLE IN THIS SPLICE BOX FOR FUTURE CIRCUIT EXTENSIONS.
 - 1/C, #8, 5 KV, TYPE C CABLE IN UNIT DUCT - TYPICAL FOR ALL RUNWAY LIGHTING CABLE UNLESS NOTED OTHERWISE. OFFSET CABLE ROUTING AS REQUIRED TO AVOID EXISTING UNDERGROUND CABLE ROUTING.
 - INSTALL BASE MOUNTED LED MEDIUM INTENSITY RUNWAY EDGE LIGHT (MIRL) WHITE - TYPICAL FOR ALL RUNWAY LIGHTS. SEE SHEET 17 FOR LIGHT DETAIL.
 - RUNWAY 11-29 PROPOSED CIRCUIT.
 - SEE SHEET 15 FOR DETAILS OF THIS AREA.
 - REMOVE EXISTING CABLE BETWEEN EXISTING GUIDANCE SIGN AND BASE MOUNTED TAXIWAY LIGHTS SHOWN.
 - REROUTE EXISTING CABLE INTO EXISTING BASE MOUNTED TAXIWAY LIGHT SHOWN.
 - 2/C, #8, 5 KV, TYPE C CABLE IN UNIT DUCT.
 - L-861 E LED RUNWAY THRESHOLD LIGHTS, BIDIRECTIONAL: RED-GREEN

- GENERAL NOTES**
- ALL RUNWAY LIGHTS SHALL BE LOCATED 10 FT FROM EDGE OF PAVEMENT TO CENTER.
 - TAXIWAY GUIDANCE AND HOLDING SIGNS SHALL BE LOCATED ON EXISTING CONCRETE BASES UNLESS NOTED OTHERWISE. WHERE EXISTING BASES ARE TO BE REMOVED AND REPLACED, THE PROPOSED BASE SHALL BE PLACED IN THE SAME LOCATION. ADJUST MOUNTING FOR PROPOSED SIGNS TO REUSE EXISTING SECONDARY CONDUIT STUBUP FROM THE ADJACENT TRANSFORMER BASE.

SIGN SCHEDULE				
SIGN NO.	SIDE	R/Y/L/W	LEGEND	REMARKS
21	A	Y	[C]	CONNECT TO RUNWAY 11-29 CIRCUIT
27	A	L/R	[C 11-29]	CONNECT TO RUNWAY 11-29 CIRCUIT
	B	L	[E]	
28	A	Y	[C]	CONNECT TO RUNWAY 11-29 CIRCUIT
38	A	L	[11]	CONNECT TO RUNWAY 11-29 CIRCUIT
40	A	R	[2-20]	STYLE 2, SIZE 2; CONNECT TO RUNWAY 11-29 CIRCUIT
40A	A	R	[2-20]	STYLE 2, SIZE 2; CONNECT TO RUNWAY 11-29 CIRCUIT
64	A	W	[4]	STYLE 2, SIZE 5; CONNECT TO RUNWAY 11-29 CIRCUIT
	A	W	[1]	

- SCHEDULE NOTES**
- ALL SIGNS ARE STYLE 2, SIZE 1 UNLESS NOTED OTHERWISE IN REMARKS COLUMN.
 - ALL ARROW DEGREES ARE MEASURED FROM VERTICAL.
 - SIGN SCHEDULE LEGEND:
R = WHITE LTR/RED BACKGROUND - HOLDING SIGN
Y = BLACK LTR./YELLOW BACKGROUND - DIRECTION OR DESTINATION SIGN.
L = YELLOW LTR./BLACK BACKGROUND - TAXIWAY LOCATION SIGN
W = WHITE LTR./BLACK BACKGROUND - RUNWAY DISTANCE REMAINING SIGN
A = SIGN FACE A
B = SIGN FACE B - IF NOT SHOWN, THIS FACE SHALL REMAIN BLANK

LEGEND

PROPOSED RUNWAY EDGE LIGHT	
EXISTING TAXIWAY EDGE LIGHT TO BE ADJUSTED	
EXISTING TAXIWAY EDGE LIGHT	
PROPOSED RUNWAY THRESHOLD LIGHT	
PROPOSED CABLE IN DUCT	
EXISTING TAXIWAY CABLE TO BE REMOVED/RELOCATED	
PROPOSED GUIDANCE SIGN	
PROPOSED SPLICE BOX	

STATE OF ILLINOIS PROFESSIONAL DESIGN FIRM LICENSE NO. 184-004515

REVISIONS

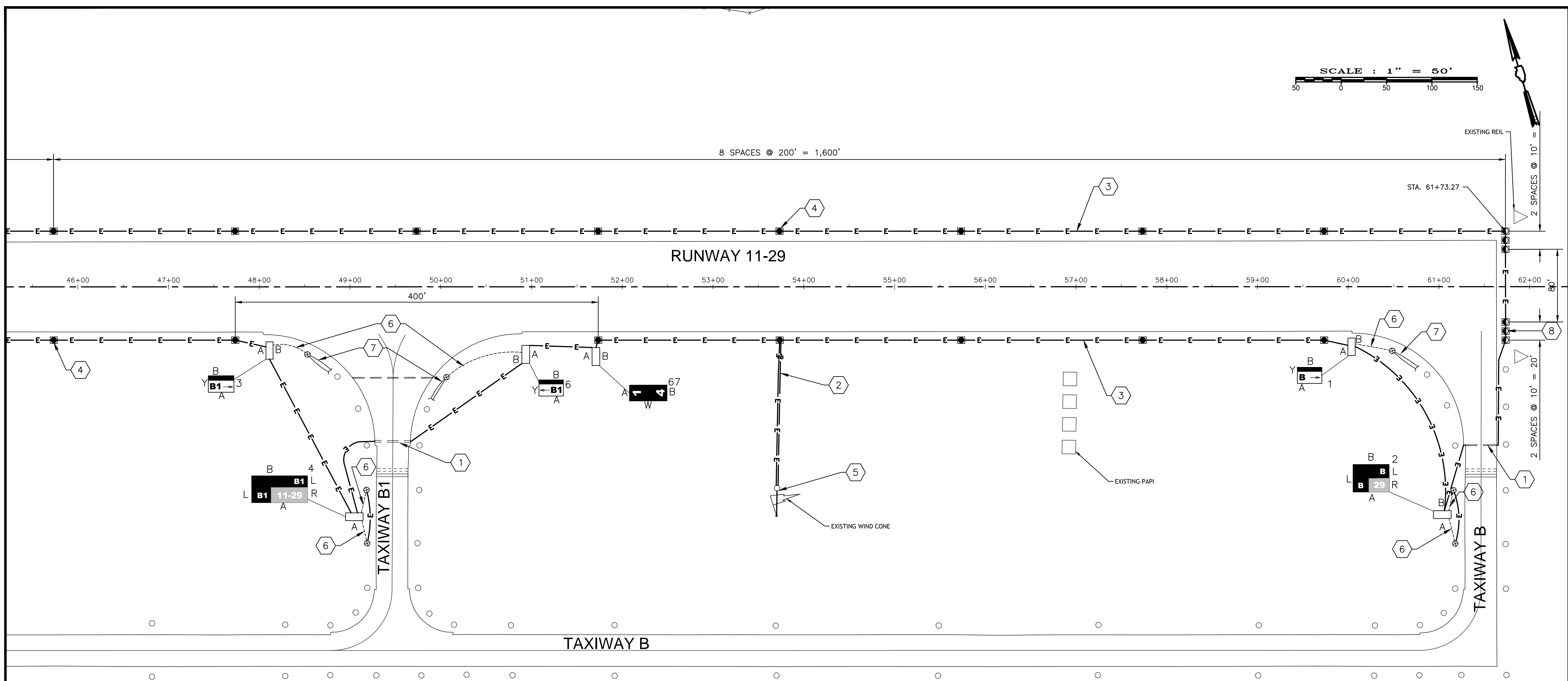
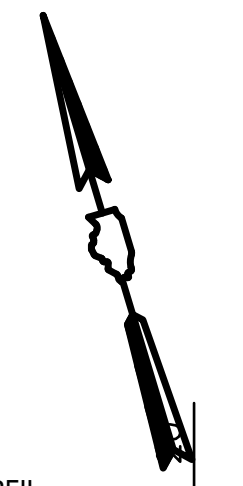
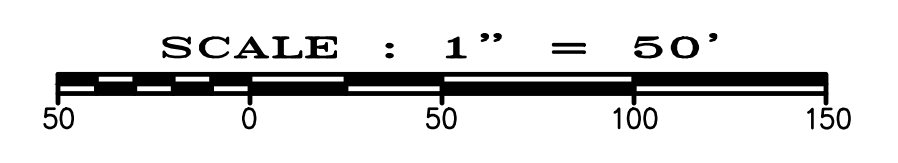
DATE	NO.
07/22/16	1

CLARIDA & ZIEGLER ENGINEERING CO.
410 North Court St, P.O. Box 937
Marion, Illinois 62959
Phone - (618)993-6411, Fax - (618)993-6750

RUNWAY 11-29 REHABILITATION, ASSOCIATED EDGE LIGHTS & GUIDANCE SIGN REPLACEMENT ELECTRICAL PLAN

Date 6/17/16 DR. By MKW CK'D By WBZ
Scale 1" = 50' Job No. 15096 Sheet No. 12 of 21

LETTING CONTRACT NUMBER
W1057



- PLAN NOTES**
- LOCATE AND EXPOSE ENDS OF EXISTING DUCT FOR ADDITION OF PROPOSED CABLES. HAND-EXCAVATE AS NECESSARY TO AVOID DAMAGE TO EXISTING CABLES. DISCONNECT AND REMOVE EXISTING CABLES FOR CIRCUITS TO BE REPLACED.
 - Z/C #8 5 KV TYPE C CABLE IN UNIT DUCT.
 - 1/C, #8, 5 KV, TYPE C CABLE IN UNIT DUCT - TYPICAL FOR ALL RUNWAY LIGHTING CABLE UNLESS NOTED OTHERWISE. OFFSET CABLE ROUTING AS REQUIRED TO AVOID EXISTING UNDERGROUND CABLE ROUTINGS.
 - INSTALL BASE MOUNTED LED MEDIUM INTENSITY RUNWAY EDGE LIGHT (MREL) WHITE - TYPICAL FOR ALL RUNWAY LIGHTS. SEE SHEET 17 FOR LIGHT DETAIL.
 - TIE NEW CABLE IN UNIT DUCT INTO EXISTING L-806 WIND CONE ADAPTER UNIT.
 - REMOVE EXISTING CABLE BETWEEN EXISTING GUIDANCE SIGN AND BASE MOUNTED TAXIWAY LIGHT SHOWN.
 - REROUTE EXISTING CABLE INTO EXISTING BASE MOUNTED TAXIWAY LIGHT SHOWN.
 - L-861 E LED RUNWAY THRESHOLD LIGHTS, BIDIRECTIONAL: RED-GREEN

- GENERAL NOTES**
- ALL RUNWAY LIGHTS SHALL BE LOCATED 10 FT FROM EDGE OF PAVEMENT TO CENTER.
 - TAXIWAY GUIDANCE AND HOLDING SIGNS SHALL BE LOCATED ON EXISTING CONCRETE BASES UNLESS NOTED OTHERWISE. WHERE EXISTING BASES ARE TO BE REMOVED AND REPLACED, THE PROPOSED BASE SHALL BE PLACED IN THE SAME LOCATION. ADJUST MOUNTING FOR PROPOSED SIGNS TO REUSE EXISTING SECONDARY CONDUIT STUBUP FROM THE ADJACENT TRANSFORMER BASE.

SIGN SCHEDULE				
SIGN NO.	SIDE	R/Y/L/W	LEGEND	REMARKS
1	A	Y	[B→]	CONNECT TO RUNWAY 11-29 CIRCUIT
2	A	L/R	[B129]	CONNECT TO RUNWAY 11-29 CIRCUIT
3	A	Y	[B1→]	CONNECT TO RUNWAY 11-29 CIRCUIT
4	A	L/R	[B111-29]	CONNECT TO RUNWAY 11-29 CIRCUIT
6	A	Y	[→B1]	CONNECT TO RUNWAY 11-29 CIRCUIT
67	A	W	[1]	STYLE 2, SIZE 5, CONNECT TO RUNWAY 11-29 CIRCUIT
	B	W	[4]	

- SCHEDULE NOTES**
- ALL SIGNS ARE STYLE 2, SIZE 1 UNLESS NOTED OTHERWISE IN REMARKS COLUMN.
 - ALL ARROW DEGREES ARE MEASURED FROM VERTICAL.
 - SIGN SCHEDULE LEGEND:
R = WHITE LTR./RED BACKGROUND - HOLDING SIGN
Y = BLACK LTR./YELLOW BACKGROUND - DIRECTION OR DESTINATION SIGN
L = YELLOW LTR./BLACK BACKGROUND - TAXIWAY LOCATION SIGN
W = WHITE LTR./BLACK BACKGROUND - RUNWAY DISTANCE REMAINING SIGN
A = SIGN FACE A
B = SIGN FACE B - IF NOT SHOWN, THIS FACE SHALL REMAIN BLANK

LEGEND

- PROPOSED RUNWAY EDGE LIGHT
- EXISTING TAXIWAY EDGE LIGHT TO BE ADJUSTED
- EXISTING TAXIWAY EDGE LIGHT
- PROPOSED RUNWAY THRESHOLD LIGHT
- PROPOSED CABLE IN DUCT
- EXISTING TAXIWAY CABLE TO BE REMOVED/RELOCATED
- PROPOSED GUIDANCE SIGN
- PROPOSED SPLICE BOX

LETTING CONTRACT NUMBER
WI057

STATE OF ILLINOIS PROFESSIONAL DESIGN FIRM LICENSE NO. 184-004515

ALL RIGHTS RESERVED

CLARIDA & ZIEGLER ENGINEERING CO.
410 North Court St, P.O. Box 937
Marion, Illinois 62959
Phone - (618)993-6411, Fax - (618)993-6750

RUNWAY 11-29 REHABILITATION, ASSOCIATED EDGE LIGHTS & GUIDANCE SIGN REPLACEMENT ELECTRICAL PLAN

DATE 07/22/16

Scale 1" = 50' Job No. 15096 Sheet No. 14 of 21

P:\Airport\15096 Runway 11-29 Runway Resurfacing and Lighting Drawings - Plans\12-15 ELECTRICAL PLAN.dwg 7-22-16 03:29:50 PM Matt