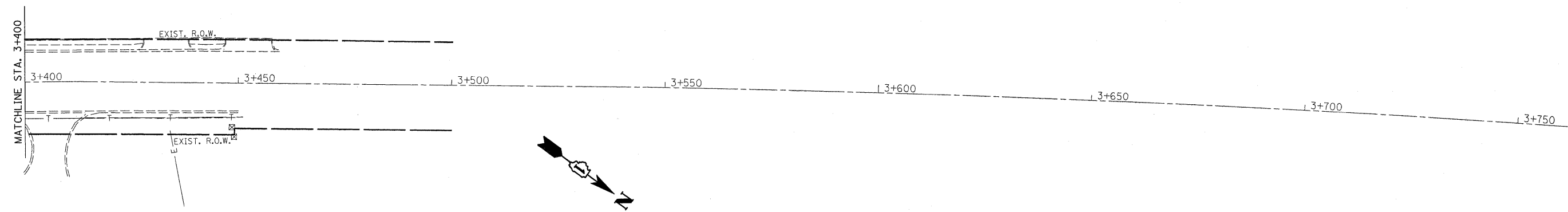
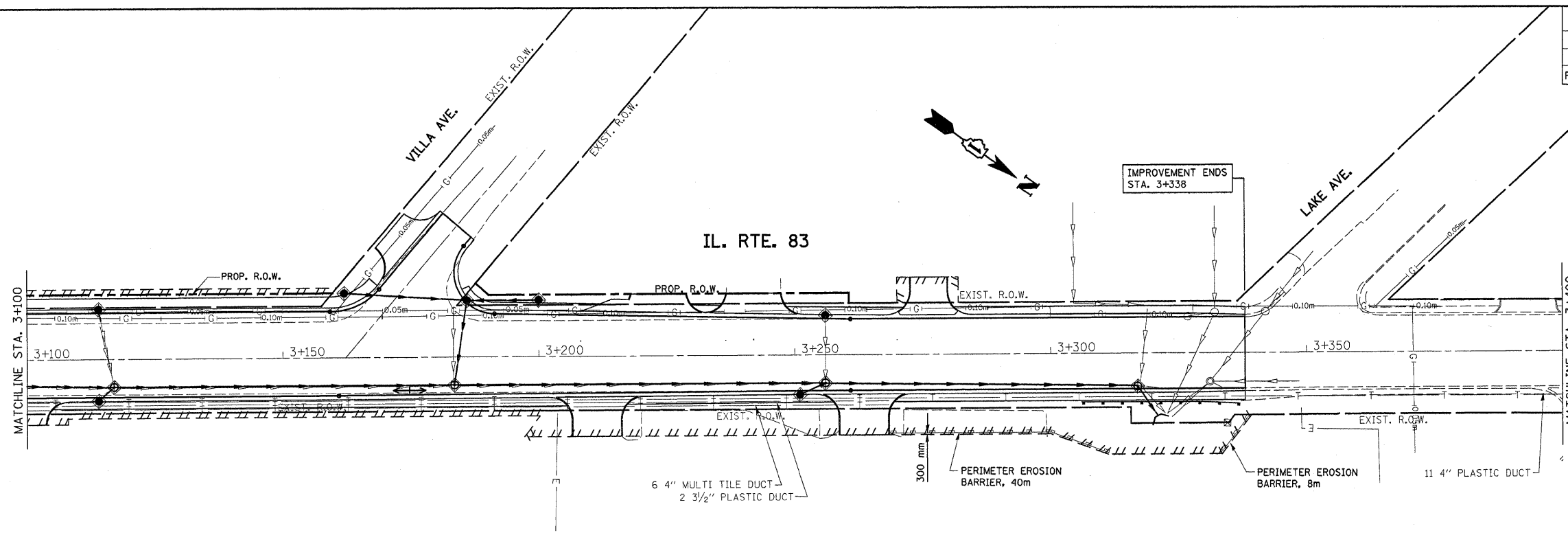


F.A.P. RTE.	SECTION	COUNTY	TOTAL SHEETS	SHEET NO.
866	4N-1	LAKE	165	51
STA.		TO STA.		
FED. ROAD DIST. NO.		ILLINOIS FED. AID PROJECT		



- EROSION CONTROL GENERAL NOTES:**
- TEMPORARY EROSION CONTROL SEEDING TO BE PROVIDED AT ALL ERODIBLE BARE EARTH AREAS.
 - THE CONTRACTOR SHALL PROVIDE AND MAINTAINED INLET PROTECTION AT ALL DRAINAGE STRUCTURES AND AT OTHER LOCATIONS DIRECTED BY THE ENGINEER AND/OR SHOWN ON THE PLANS. INLET PROTECTION SHALL BE PLACED IMMEDIATELY AFTER THE AREA HAS BEEN DISTURBED.
 - ALL EROSION CONTROL MEASURES SHALL BE IN ACCORDANCE WITH THE REQUIREMENTS OF THE STANDARD SPECIFICATIONS AND OF THE APPLICABLE STATE STANDARDS FOR THE ENTIRE DURATION OF THE CONTRACT OR UNTIL SUCH TIME AS DIRECTED BY THE ENGINEER.
 - PERIMETER EROSION BARRIER SHALL BE PLACED 12 INCHES FROM THE R.O.W. OR EASEMENT OR AS DIRECTED BY THE ENGINEER.
 - AT ANY AREA WHERE THERE IS NO PROPOSED EARTH GRADING, THE EXISTING GROUND COVER SHALL REMAIN.
 - DURING CONSTRUCTION AND WHEN ERODIBLE SOILS ARE EXPOSED ALL DRAINAGE STRUCTURES NOT PROTECTED WITH INLET OR PIPE PROTECTION SHALL BE KEPT SEALED TO PREVENT ACCESS FROM EROSION. THIS WORK SHALL BE CONSIDERED AS PART OF THE COST OF THE VARIOUS DRAINAGE STRUCTURES.

- TEMPORARY EROSION CONTROL SEEDING:**
- TEMPORARY DITCH CHECK (URETHANE FOAM / GEOTEXTILE)
 - INLET OR PIPE PROTECTION
 - PERIMETER EROSION BARRIER
 - ROADWAY DITCH FLOW
 - SWALE

REVISIONS	
NAME	DATE

ILLINOIS DEPARTMENT OF TRANSPORTATION
 IL RTE 83 (MILWAUKEE AVE)
 @ IL RTE 132 (GRAND AVE)
 EROSION CONTROL PLAN
 DATE 01/20/2004
 DRAWN BY
 CHECKED BY