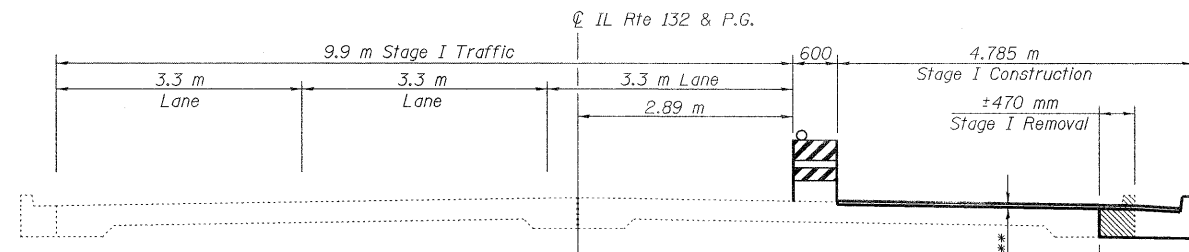


ROUTE NO.	SECTION	COUNTY	TOTAL SHEETS	SHEET NO.
F.A.P. 866	4N-1	LAKE	165	72
FED. ROAD DIST. NO. 7	ILLINOIS	FED. AID PROJECT-		

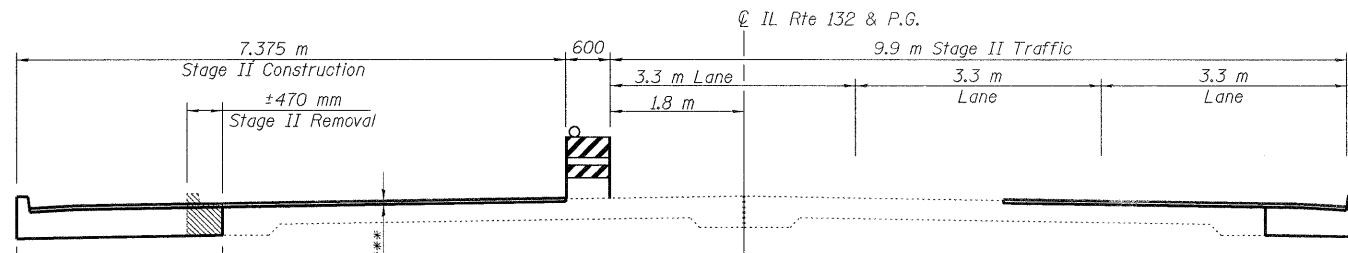
SHEET NO.
3 of 22

Contract No.: 60931



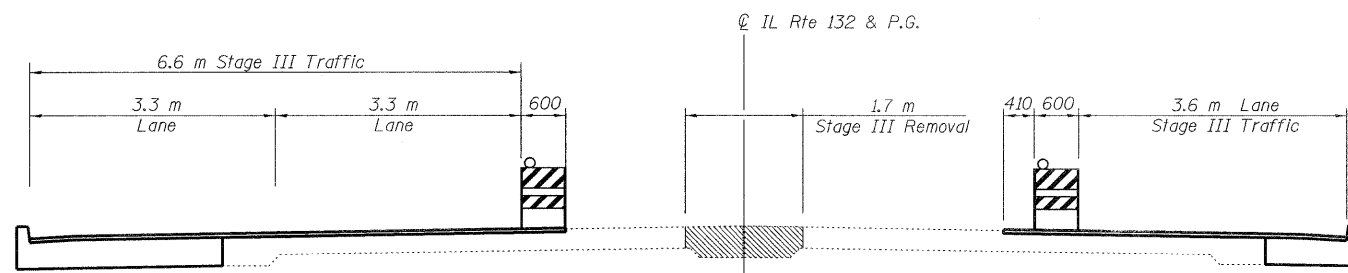
STAGE I CONSTRUCTION
(Looking East)

1.265 m from Sta. 1+091.44 (West End of Structure) to Sta. 1+181.200
Varies from 1.265 m @ Sta. 1+181.200 to 1.196 m @ Sta. 1+195.072 (East End of Structure)

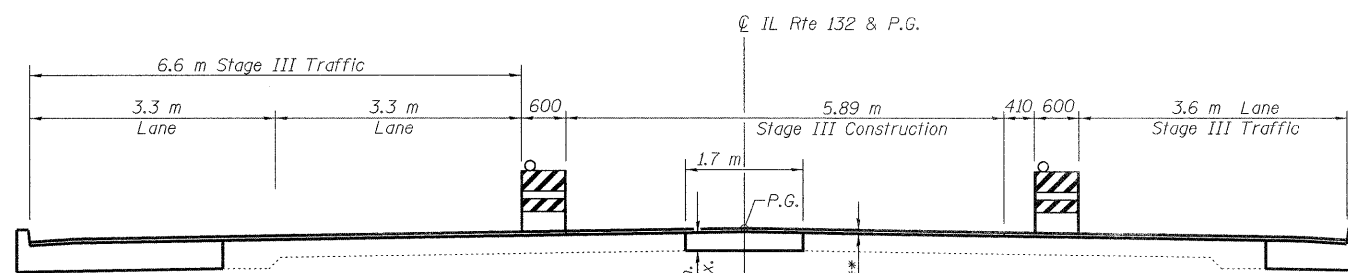


STAGE II CONSTRUCTION
(Looking East)

2.765 m from Sta. 1+091.44 (West End of Structure) to Sta. 1+181.200
Varies from 2.765 m @ Sta. 1+181.200 to 2.488 m @ Sta. 1+195.072 (East End of Structure)



STAGE III REMOVAL
(Looking East)

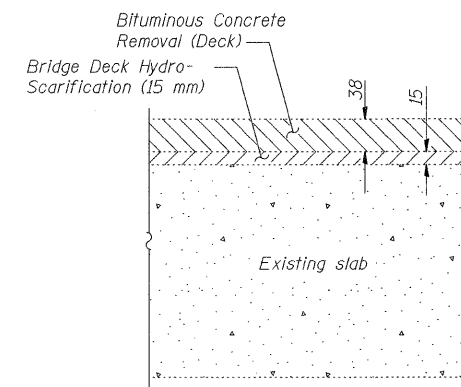


STAGE III CONSTRUCTION
(Looking East)

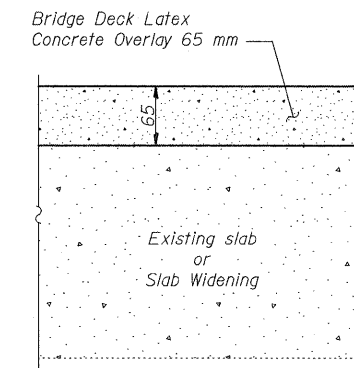
*** Remove 38 mm of HMA Overlay,
Scarify 15 mm of Concrete Deck using
Hydro-Scarification,
Install a 65 mm Bridge Deck
Latex Concrete Overlay

SUGGESTED SEQUENCE OF CONSTRUCTION

1. Remove existing HMA overlay and scarify 15 mm of existing concrete deck slab.
2. Move traffic into Stage I configuration.
3. Remove existing curb & gutter from south side of structure and perform Full Depth Deck Slab Repair operations in Stage I work zone.
4. Proceed with Stage I Construction and Latex Concrete Overlay to the limits shown.
5. Move traffic into Stage II configuration.
6. Remove existing curb & gutter from north side of structure and perform Full Depth Deck Slab Repair operations in Stage II work zone.
7. Proceed with Stage II Construction and Concrete Overlay to the limits shown.
8. Move traffic into Stage III Configuration.
9. Perform remaining Deck Slab Repairs.
10. Proceed with Stage III Construction and the remaining Concrete Overlay.



SURFACE REMOVAL



OVERLAY

NOTES

See Roadway plans for Curb and Gutter Removal.

In Stage III Construction, remove existing slab and longitudinal reinforcing steel. Transverse reinforcing steel shall remain in place. Reinforcement remaining in place shall be straightened and blast-cleaned.

See Sheet 4 of 22 for surface removal quantities.

BILL OF MATERIAL

(Includes Approach Slabs)

ITEM	UNIT	QUANTITY
Bridge Deck Latex Concrete Overlay 65 mm	Sq M	2043



REVISIONS	
NAME	DATE

ILLINOIS DEPARTMENT OF TRANSPORTATION
STAGE CONSTRUCTION DETAILS
IL RTE. 132 LAND BRIDGE
FAP RTE 866 - SEC 4N-1
LAKE COUNTY
STA. 1+143.3
SN 049-D002
DATE: 11-06-09
DRAWN BY BLB
CHECKED BY WJV