

*REF-
*REF-
*REF-

SHEET S4 OF S4

F.A. RTE.	SECTION	COUNTY	TOTAL SHEETS IN PROJECT
866	4N-1	LAKE	165
STA. 3 + 18.69		TO STA. 3 + 324.15	
FED. ROAD DIST. NO. 1 ILLINOIS FED. AID PROJECT			

SOIL BORING LOG

Illinois Department of Transportation
DIVISION OF HIGHWAYS
ILLINOIS DEPARTMENT OF TRANSPORTATION

Page 1 of 1
Date 8/19/03

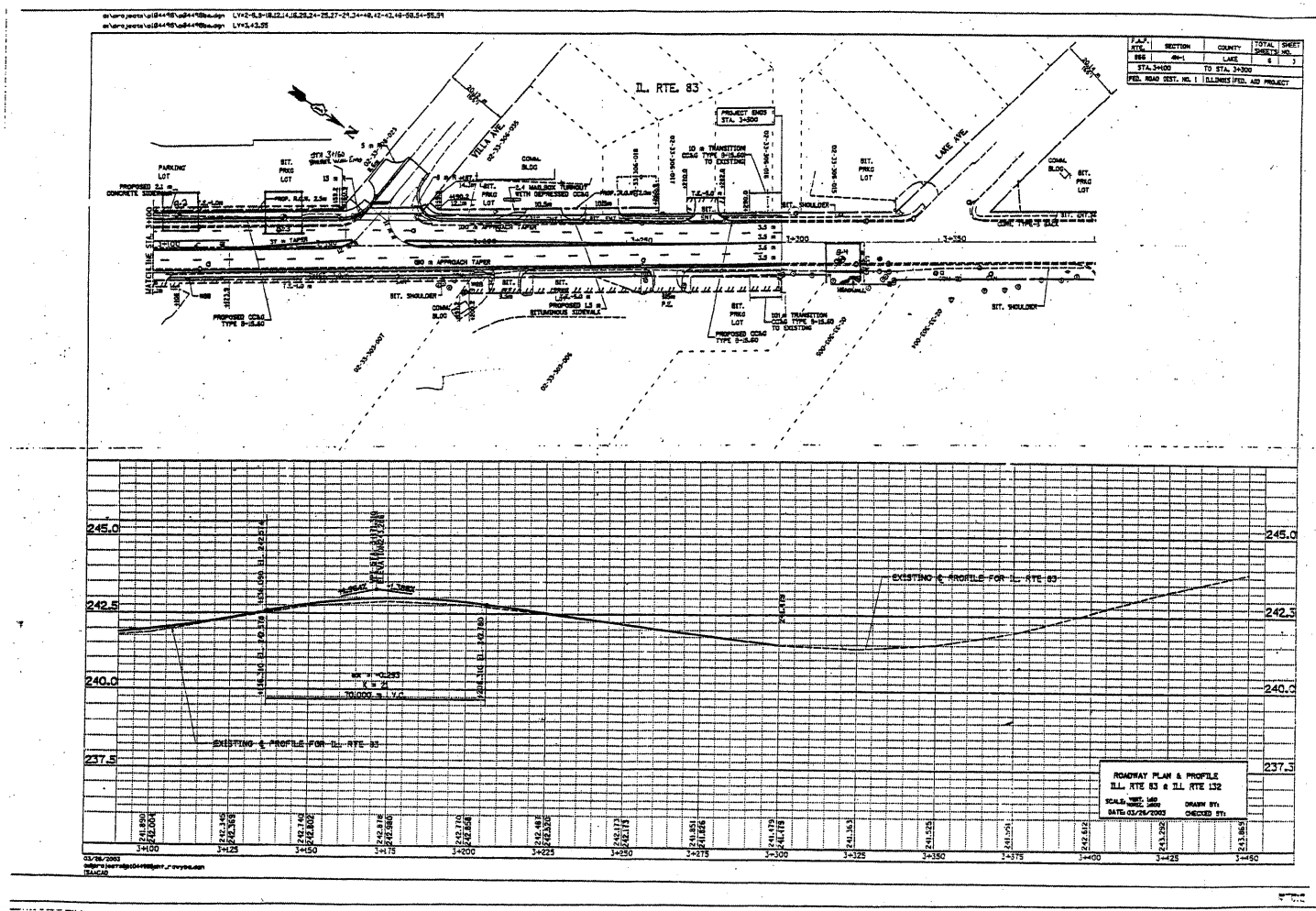
ROUTE FAP 866 (IL 83) DESCRIPTION Culvert Headwall n/o IL 132 LOGGED BY C. Goddard

SECTION 4N-1 LOCATION SW 1/4, SEC. 33, TWP. 48N, RNG. 10E, 3rd PM

COUNTY Lake DRILLING METHOD CME 750, 3.25" HSA HAMMER TYPE CME Automatic

STRUCT. NO.	DEPT H	BLOCS	UCS	M O I S T	Surface Water Elev.	DEPT H	BLOCS	M O I S T
Station	TH	S	Qu	T	Stream Bed Elev.	TH	S	T
BORING NO.	(m)	(mm)	(kPa)	(%)	Groundwater Elev.:	(m)	(mm)	(kPa)
Station					First Encounter			
Offset					Upon Completion			
Ground Surface Elev.					After			
	(m)	(mm)	(kPa)	(%)	Hrs.	(m)	(mm)	(kPa)
Bituminous Pavement 330mm					237.92	2	B	22
Station 240.74					237.83	3	B	22
Stiff Brown and Black SILTY CLAY						4	B	22
	2				Approx. 51mm thick Silt Seam @ about 6.9m	2	P	15
	2	153	20		234.06	4	P	18
	3	B			Stiff Gray SILTY LOAM	6	P	18
	-1.5							
	2				233.35	2	B	22
	2	105	27		Stiff Gray SILTY CLAY	2	B	22
	3	B				6	B	22
Hard Brown w/Gray Streaks SILTY CLAY								
	2					3		
	8	383	17		Thin Sand Seam @ about 8.5m	5	B	17
	7	B				7	B	17
	-3.0							
	5					3		
	8	795	16			4	B	17
	11	B				6	B	17
	4				Grades w/trace fine gravel	3		
	7	527	18			4	B	15
	9	B				6	B	15
	-4.5							
Grades w/o Gray Streaks						3		
	8	671	18			4	B	23
	11	B			Approx. 51mm thick Soft Layer @ about 11m	4	B	23
					End of Boring			
		240	21					
	3	P						
Very Stiff Brown SILTY LOAM						4	B	20
Station 235.88						6	B	20
	-8.0							

The Unconfined Compressive Strength (UCS) Failure Mode is indicated by (B-Bulge, S-Shear, P-Penetrometer)
The SPT (N value) is the sum of the last two blow values in each sampling zone (AASHTO T206)
BBS, from 137 (Rev. 8-99)



DISTRICT ONE - DESIGN
PLAN PREPARATION ENGINEER JOHN FORTMANN / RUSS SINHA (847) 705-4209 / ATTENTION MARK V. TINIAKOS (847) 705-4266

REVISIONS		ILLINOIS DEPARTMENT OF TRANSPORTATION
NAME	DATE	
		IL 83 (MILWAUKEE AVENUE) AT IL 132 (GRAND AVENUE) SOIL BORING
SCALE: NONE		DRAWN BY: MVT
DATE: 01/08/04		CHECKED BY: RSS