

**SUMMARY OF QUANTITIES**

CODED PAY ITEM NUMBER	PAY ITEM	UNIT	URBAN 90% FED. 10% STATE CONSTRUCTION TYPE CODE	
			TOTAL QUANTITIES	016-0519 SFTY-2A
<del>20200100</del>	<del>EARTH EXCAVATION</del>	CU YD	<del>60</del>	<del>60</del>
20700220	POROUS GRANULAR EMBANKMENT	CU YD	118	118
20700400	POROUS GRANULAR EMBANKMENT, SPECIAL	CU YD	185	185
21101615	TOPSOIL FURNISH AND PLACE, 4"	SQ YD	270	270
25000210	SEEDING, CLASS 2A	ACRE	0.06	0.06
25000400	NITROGEN FERTILIZER NUTRIENT	POUND	6	6
25000500	PHOSPHORUS FERTILIZER NUTRIENT	POUND	6	6
25000600	POTASSIUM FERTILIZER NUTRIENT	POUND	6	6
25100630	EROSION CONTROL BLANKET	SQ YD	270	270
28000400	PERIMETER EROSION BARRIER	FOOT	761	761
28000510	INLET FILTERS	EACH	4	4
31101400	SUB-BASE GRANULAR MATERIAL, TYPE B 6"	SQ YD	495	495
40600100	BITUMINOUS MATERIALS (PRIME COAT)	GALLON	281	281
40600300	AGGREGATE (PRIME COAT)	TON	6	6
40600635	LEVELING BINDER (MACHINE METHOD), N70	TON	49	49
40603595	POLYMERIZED HOT-MIX ASPHALT SURFACE COURSE, MIX "F", N90	TON	190	190
50300300	PROTECTIVE COAT	SQ YD	2883	2883
42001420	BRIDGE APPROACH PAVEMENT CONNECTOR (PCC)	SQ YD	120	120
42400200	PORTLAND CEMENT CONCRETE SIDEWALK 5 INCH	SQ FT	1735	1735
44000100	PAVEMENT REMOVAL	SQ YD	389	389
44000156	HOT-MIX ASPHALT SURFACE REMOVAL, 1 3/4"	SQ YD	1,939	1,939
44000500	COMBINATION CURB AND GUTTER REMOVAL	FOOT	627	627
44000600	SIDEWALK REMOVAL	SQ FT	2,335	2,335
44000700	APPROACH SLAB REMOVAL	SQ YD	498	498
44003100	MEDIAN REMOVAL	SQ FT	3,494	3,494
44004250	PAVED SHOULDER REMOVAL	SQ YD	58	58

\* INDICATES SPECIALTY ITEMS

CODED PAY ITEM NUMBER	PAY ITEM	UNIT	URBAN 90% FED. 10% STATE CONSTRUCTION TYPE CODE	
			TOTAL QUANTITIES	016-0519 SFTY-2A
50102400	CONCRETE REMOVAL	CU YD	60.2	60.2
50104720	REMOVAL OF EXISTING CONCRETE DECK	EACH	1	1
50157300	PROTECTIVE SHIELD	SQ YD	1,545	1,545
50200100	STRUCTURE EXCAVATION	CU YD	185	185
50300225	CONCRETE STRUCTURES	CU YD	71.7	71.7
50300255	CONCRETE SUPERSTRUCTURE	CU YD	822.2	822.2
50300260	BRIDGE DECK GROOVING	SQ YD	1,404	1,404
<del>50500105</del>	<del>FURNISHING AND ERECTING STRUCTURAL STEEL</del>	L SUM	<del>1</del>	<del>1</del>
50500505	STUD SHEAR CONNECTORS	EACH	10,536	10,536
50501130	STRUCTURAL STEEL REPAIR	POUND	6,020	6,020
<del>50500715</del>	<del>JACK AND REMOVE EXISTING BEARINGS</del>	EACH	<del>24</del>	<del>24</del>
50606400	CONTAINMENT AND DISPOSAL OF LEAD PAINT	L SUM	1	1
50600300	CLEANING AND PAINTING STEEL BRIDGE	L SUM	1	1
50800205	REINFORCEMENT BARS, EPOXY COATED	POUND	181,980	181,980
50800515	BAR SPLICERS	EACH	1042	1042
50900105	ALUMINUM RAILING, TYPE L	FOOT	509	509
51100490	AGGREGATE SLOPE WALL 9"	SQ YD	165	165
51205200	TEMPORARY SHEET PILING	SQ FT	260	260
51500100	NAME PLATES	EACH	1	1
52000110	PREFORMED JOINT STRIP SEAL	FOOT	143	143
52100020	ELASTOMERIC BEARING ASSEMBLY, TYPE II	EACH	12	12
52100030	ELASTOMERIC BEARING ASSEMBLY, TYPE III	EACH	12	12
52100520	ANCHOR BOLTS, 1"	EACH	48	48
56700300	CONCRETE SEALER	SQ FT	942	942
59000200	EPOXY CRACK INJECTION	FOOT	63	63
59100100	GEOCOMPOSITE WALL DRAIN	SQ YD	86	86
60100060	CONCRETE HEADWALL FOR PIPE DRAINS	EACH	1	1

\* INDICATES SPECIALTY ITEMS

Rev. 7-21-10 Rev.

SCALE: SHEET NO. OF SHEETS STA. TO STA.

**SUMMARY OF QUANTITIES**

CODED PAY ITEM NUMBER	PAY ITEM	UNIT	URBAN 90% FED. 10% STATE		CONSTRUCTION TYPE CODE
			TOTAL QUANTITIES	016-0519 SFTY-2A	
<del>60107600</del>	<del>PIPE UNDERDRAINS 4"</del>	FOOT	<del>100</del>	<del>100</del>	1
60109580	PIPE UNDERDRAINS FOR STRUCTURES 4"	FOOT	172	172	
60605000	COMBINATION CONCRETE CURB AND GUTTER, TYPE B-6.24	FOOT	347	347	
60619200	CONCRETE MEDIAN, TYPE SB-6.06	SQ FT	3,494	3,494	
63100070	TRAFFIC BARRIER TERMINAL, TYPE 5	EACH	2	2	
* 03100085	<del>TRAFFIC BARRIER TERMINAL, TYPE 0</del>	EACH	2	2	
63200310	GUARDRAIL REMOVAL	FOOT	135	135	1
67000400	ENGINEER'S FIELD OFFICE, TYPE A	CAL MO	10	10	
67100100	MOBILIZATION	L SUM	1	1	
70101800	TRAFFIC CONTROL AND PROTECTION, (SPECIAL)	L SUM	1	1	
70103815	TRAFFIC CONTROL SURVEILLANCE	CAL DA	213	213	1
70106800	CHANGEABLE MESSAGE SIGN	CAL MO	20	20	
70301000	WORK ZONE PAVEMENT MARKING REMOVAL	SQ FT	3,587	3,587	
70400100	TEMPORARY CONCRETE BARRIER	FOOT	575	575	
70400200	RELOCATE TEMPORARY CONCRETE BARRIER	FOOT	575	575	
* 78000200	THERMOPLASTIC PAVEMENT MARKING - LINE 4"	FOOT	2,423	2,423	
* 78006110	PREFORMED THERMOPLASTIC PAVEMENT MARKING - LINE 4"	FOOT	841	841	
* 78100100	RAISED REFLECTIVE PAVEMENT MARKER	EACH	93	93	
* 78100105	RAISED REFLECTIVE PAVEMENT MARKER (BRIDGE)	EACH	32	32	
78300100	PAVEMENT MARKING REMOVAL	SQ FT	1,088	1,088	
78300200	RAISED REFLECTIVE PAVEMENT MARKER REMOVAL	EACH	125	125	
* 81012600	CONDUIT IN TRENCH, 2" DIA., PVC	FOOT	133	133	
<del>81022100</del>	<del>CONDUIT ENCASED IN CONCRETE, 2" DIA., PVC</del>	FOOT	<del>1,040</del>	<del>1,040</del>	1
* 81400100	HANDHOLE	EACH	4	4	
* 81900200	TRENCH AND BACKFILL FOR ELECTRICAL WORK	FOOT	133	133	
* 89502350	REMOVE AND REINSTALL ELECTRIC CABLE FROM CONDUIT	FOOT	1587	1587	1

\* INDICATES SPECIALTY ITEMS

CODED PAY ITEM NUMBER	PAY ITEM	UNIT	URBAN 90% FED. 10% STATE		CONSTRUCTION TYPE CODE
			TOTAL QUANTITIES	016-0519 SFTY-2A	
Z0030850	TEMPORARY INFORMATION SIGNING	SQ FT	51	51	
X0324847	REMOVE AND REINSTALL LIGHT POLE, SPECIAL	EACH	2	2	
X0325239	TEMPORARY PAVEMENT, 10"	SQ YD	389	389	
X0325303	STRUCTURAL REPAIR CONCRETE (DEPTH GREATER THAN 5 INCHES)	SQ FT	16	16	
X0325305	STRUCTURAL REPAIR CONCRETE (DEPTH EQUAL TO OR LESS THAN 5 INCHES)	SQ FT	199	199	
X0325598	DRAINAGE SCUPPERS, DS-12M10	EACH	4	4	
X7030104	WET PAVEMENT MARKING TEMPORARY TAPE, TYPE III, 4 INCH	FOOT	10,760	10,760	
Z0018800	DRAINAGE SYSTEM	L SUM	1	1	
Z0030250	IMPACT ATTENUATORS, TEMPORARY (NON-REDIRECTIVE), TEST LEVEL 3	EACH	2	2	
Z0030350	IMPACT ATTENUATORS, RELOCATE (NON-REDIRECTIVE), TEST LEVEL 3	EACH	2	2	
Z0048665	RAILROAD PROTECTIVE LIABILITY INSURANCE	L SUM	1	1	
Z0064562	SEGMENTAL BLOCK RETAINING WALL REPAIR	SQ FT	107	107	
Z0031200	JACKING AND CRIBBING	EACH	24	24	

\* INDICATES SPECIALTY ITEMS

FILE NAME =  
\$FILEL\$



DESIGNED RJD  
DRAWN RJD  
CHECKED TWL  
DATE 4/20/2010

REVISED -  
REVISED -  
REVISED -  
REVISED -

STATE OF ILLINOIS  
DEPARTMENT OF TRANSPORTATION

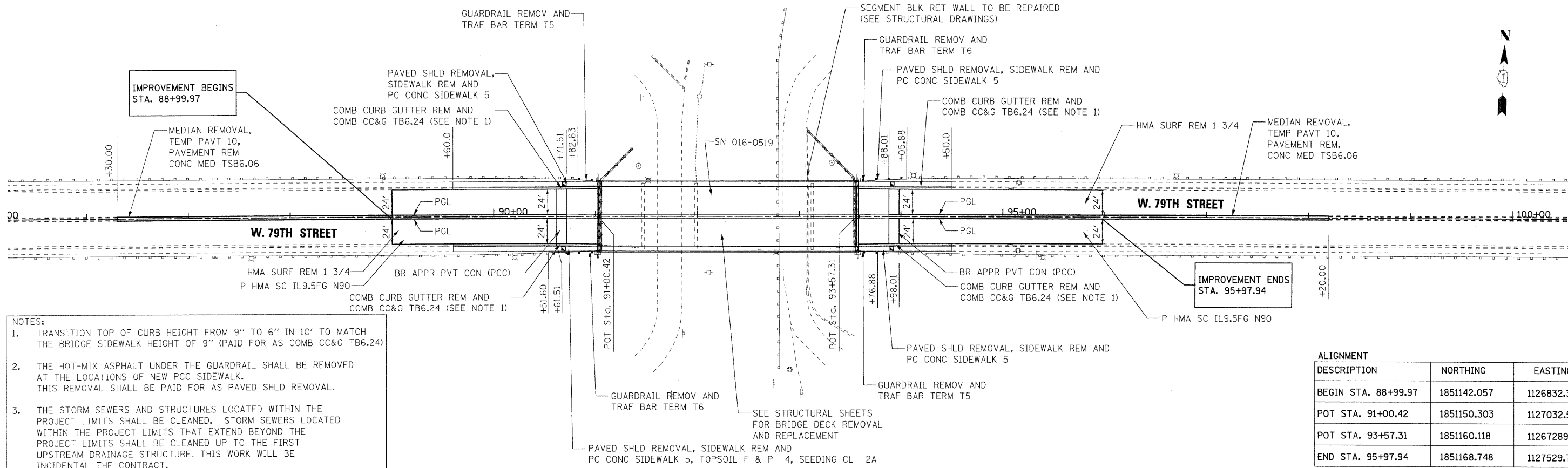
SUMMARY OF QUANTITIES

SCALE: SHEET NO. OF SHEETS STA. TO STA.

Rev. 7-21-10  
F.A.U. RTE. 1548 SECTION 461 (VB & VF) I COUNTY COOK TOTAL SHEETS 52 SHEET NO. 4 CONTRACT NO. 60H65 ILLINOIS FED. AID PROJECT

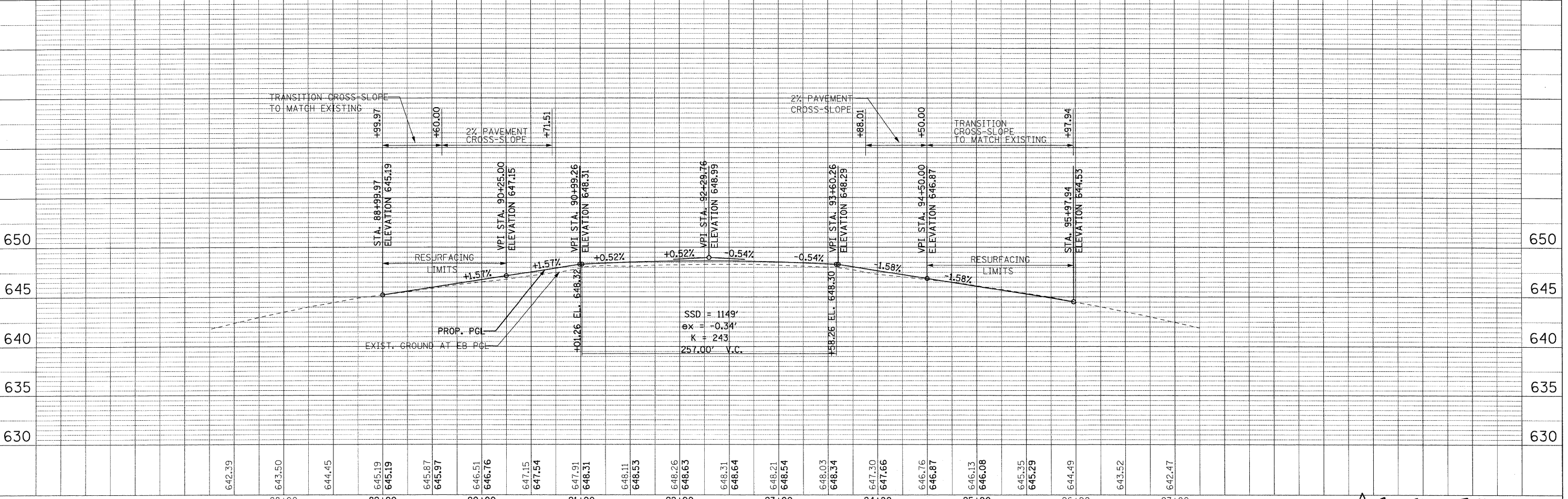
PLAN SURVEYED BY DATE  
 ALIGNED CHECKED BY DATE  
 RT. OF WAY CHECKED BY DATE  
 P.O.D. FILE NAME  
 NO.

PROFILE SURVEYED BY DATE  
 GRADES CHECKED BY DATE  
 G.M. NOTED BY DATE  
 STRUCTURE NOTATING DRKD  
 NO.



- NOTES:
1. TRANSITION TOP OF CURB HEIGHT FROM 9" TO 6" IN 10' TO MATCH THE BRIDGE SIDEWALK HEIGHT OF 9" (PAID FOR AS COMB CC&G TB6.24)
  2. THE HOT-MIX ASPHALT UNDER THE GUARDRAIL SHALL BE REMOVED AT THE LOCATIONS OF NEW PCC SIDEWALK. THIS REMOVAL SHALL BE PAID FOR AS PAVED SHLD REMOVAL.
  3. THE STORM SEWERS AND STRUCTURES LOCATED WITHIN THE PROJECT LIMITS SHALL BE CLEANED. STORM SEWERS LOCATED WITHIN THE PROJECT LIMITS THAT EXTEND BEYOND THE PROJECT LIMITS SHALL BE CLEANED UP TO THE FIRST UPSTREAM DRAINAGE STRUCTURE. THIS WORK WILL BE INCIDENTAL THE CONTRACT.

ALIGNMENT DESCRIPTION	NORTHING	EASTING
BEGIN STA. 88+99.97	1851142.057	1126832.316
POT STA. 91+00.42	1851150.303	1127032.595
POT STA. 93+57.31	1851160.118	11267289.258
END STA. 95+97.94	1851168.748	1127529.774



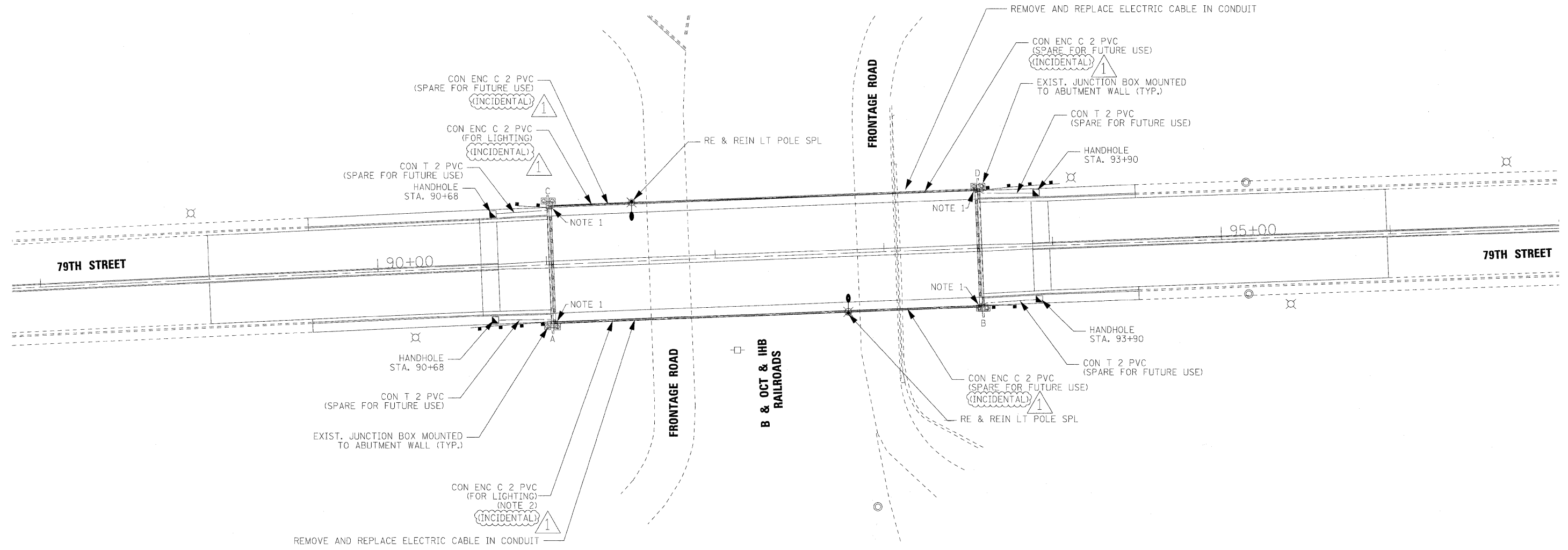
FILE NAME =	DESIGNED - RJD	REVISED - RJD 6/11/2010	<b>STATE OF ILLINOIS</b> <b>DEPARTMENT OF TRANSPORTATION</b> <b>79TH STREET OVER B &amp; OCT &amp; IHB RAILROAD</b> <b>EXISTING &amp; PROPOSED PLAN AND PROFILE</b> SCALE: 1"=50' SHEET NO. 1 OF 1 SHEETS STA. TO STA.	F.A.U. RTE. 1548	SECTION 461 (VB & VF) I	COUNTY COOK	TOTAL SHEETS 52	SHEET NO. 6
#FILE#	DRAWN - ADW	REVISED -		FED. ROAD DIST. NO.	ILLINOIS FED. AID PROJECT	CONTRACT NO. 60H65		
	CHECKED - TWL	REVISED -		Rev. Sheet 7-21-10				
	DATE - 06/11/2010	REVISED -						





**LEGEND**

- ⊗ EXISTING LIGHT POLE
- REMOVE AND REINSTALL LIGHT POLE, SPECIAL
- ▣ PROPOSED HANDHOLE
- ⊕ EXISTING JUNCTION BOX
- PROPOSED CONDUIT 2" PVC



**NOTES:**

1. CONTRACTOR TO REMOVE EXISTING LIGHTING CABLE BETWEEN EXISTING JUNCTION BOXES A, B, C AND D, PRESENTLY HOUSED IN CONDUIT ATTACHED TO STRUCTURE. THE CONTRACTOR WILL PULL NEW CABLE IDENTICAL IN SIZE, TYPE AND QUANTITY TO EXISTING WIRE REMOVED. THE CABLE SPLICES FOR NEW WIRE WILL BE DONE IN EXISTING JUNCTION BOXES A, B, C AND D AND CABLE WILL RUN IN CONCRETE ENCASED 2" PVC CONDUIT SHOWN IN PLAN AND USED TO WIRE THE 2-REMOVE AND REINSTALL LIGHT POLE. CONTRACTOR TO ENSURE THAT THE UNDERPASS LIGHTING AND WIRING (EXISTING) IS MAINTAINED AS IS. ANY DAMAGE TO SAME WILL BE REPLACED BY CONTRACTOR AT HIS COST.
2. SEE SHEET NO. S13 SHOWING RUN OF CONCRETE ENCASED 2" PVC CONDUIT FOR FUTURE TRAFFIC SIGNAL. SEE SECTION B-B.

**GENERAL ELECTRIC PLAN NOTES:**

1. THE CONTRACTOR SHALL CONTACT THE ELECTRIC UTILITY COMPANY TO COORDINATE THE ELECTRICAL SERVICE WORK.
2. THE CONTRACTOR SHALL REMOVE AND STORE THE POLES TO BE REINSTALLED AT NO ADDITIONAL COST. ANY REMOVED WIRING THAT IS NOT REUSABLE BECOMES PROPERTY OF THE CONTRACTOR.
3. THE QUANTITIES OF RACEWAYS WHERE INDICATED IN THE PLANS ARE APPROXIMATIONS ONLY. THE CONTRACTOR SHALL FIELD VERIFY ALL LENGTHS AND SHALL INSTALL RACEWAYS IN COMPLETE COMPLIANCE WITH SPECIFIED REQUIREMENTS.
4. TRENCHES FOR LIGHTING RACEWAYS SHALL HAVE MINIMUM DEPTH OF 36 INCHES.

SCHEDULE OF QUANTITIES			
CODE NO.	ITEM	UNIT	QTY
81012600	CONDUIT IN TRENCH, 2" DIA., PVC	FOOT	133
81022100	CONDUIT ENCASED IN CONCRETE, 2" DIA., PVC	FOOT	1010
81400100	HANDHOLE	EACH	4
81900200	TRENCH AND BACKFILL FOR ELECTRICAL WORK	FOOT	133
X0324847	REMOVE & REINSTALL LIGHT POLE SPECIAL	EACH	2
	REMOVE AND REPLACE ELECTRIC CABLE IN CONDUIT	FOOT	1587

1 ADDENDUM NO. 1 - 7/13/2010

FILE NAME # #FILEL#		DESIGNED SM	REVISED - RJD 07/13/2010	<b>STATE OF ILLINOIS</b> DEPARTMENT OF TRANSPORTATION	<b>LIGHTING AND ELECTRICAL PLAN</b> 79TH STREET OVER B & OCT & IHB RAILROAD	F.A.U. RTE. 1548	SECTION 461 (VB & VF) I	COUNTY COOK	TOTAL SHEETS 52	SHEET NO. 7
		DRAWN RJD	REVISED -			SCALE: 1" = 30'			SHEET NO. OF SHEETS STA. TO STA.	ILLINOIS FED. AID PROJECT CONTRACT NO. 60H65
		CHECKED TWL	REVISED -							
		DATE 06/14/2010	REVISED -							

Rev. Sheet 7-21-10