
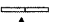






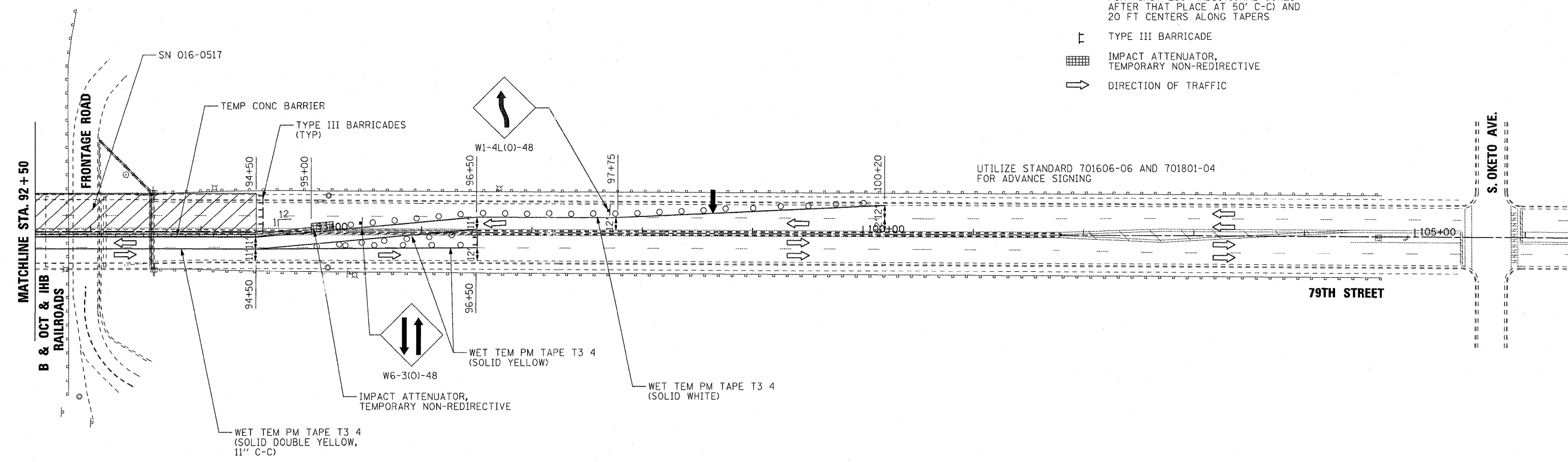


LEGEND:

-  WORK AREA
-  TEMPORARY CONCRETE BARRIER
-  ARROW BOARD
-  SIGN
-  TYPE II BARRICADE OR DRUM WITH STEADY BURNING LIGHTS @ 25 FT CENTERS ALONG ROADWAY (TANGENT) FOR FIRST 250' (ADDITIONAL CONES AFTER THAT PLACE AT 50' C-C) AND 20 FT CENTERS ALONG TAPERS
-  TYPE III BARRICADE
-  IMPACT ATTENUATOR, TEMPORARY NON-REDIRECTIVE
-  DIRECTION OF TRAFFIC



FILE NAME =
#FILEL#



DESIGNED	RJD	REVISED	-
DRAWN	ADW	REVISED	-
CHECKED	TWL	REVISED	-
DATE	06/14/2010	REVISED	-

**STATE OF ILLINOIS
DEPARTMENT OF TRANSPORTATION**

**SUGGESTED STAGE OF CONSTRUCTION & TRAFFIC CONTROL
STAGE 1
79TH STREET OVER B & OCT & IHB RAILROAD**

SCALE: 1" = 50' SHEET NO. OF SHEETS STA. TO STA.

F.A.I. RTE.	SECTION	COUNTY	TOTAL SHEETS	SHEET NO.
1548	461 (VB & VF) I	COOK	52	10
				CONTRACT NO. 60H65
ILLINOIS FED. AID PROJECT				