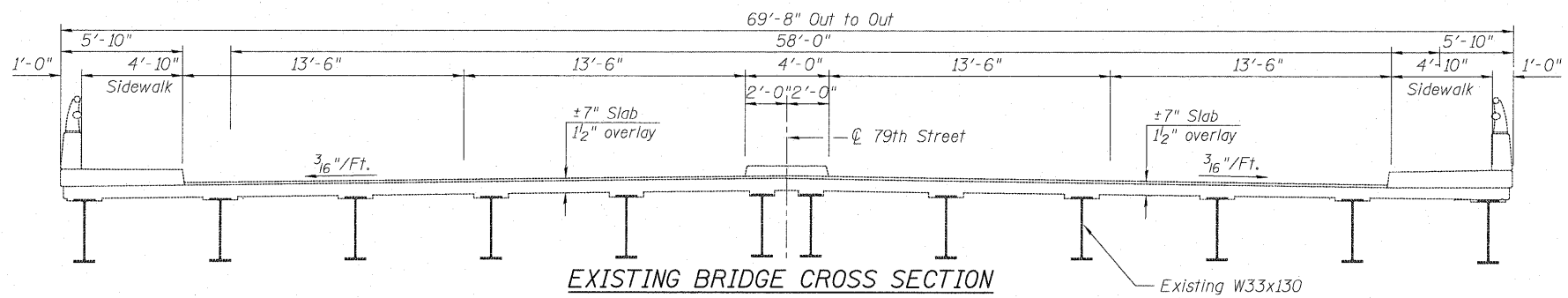
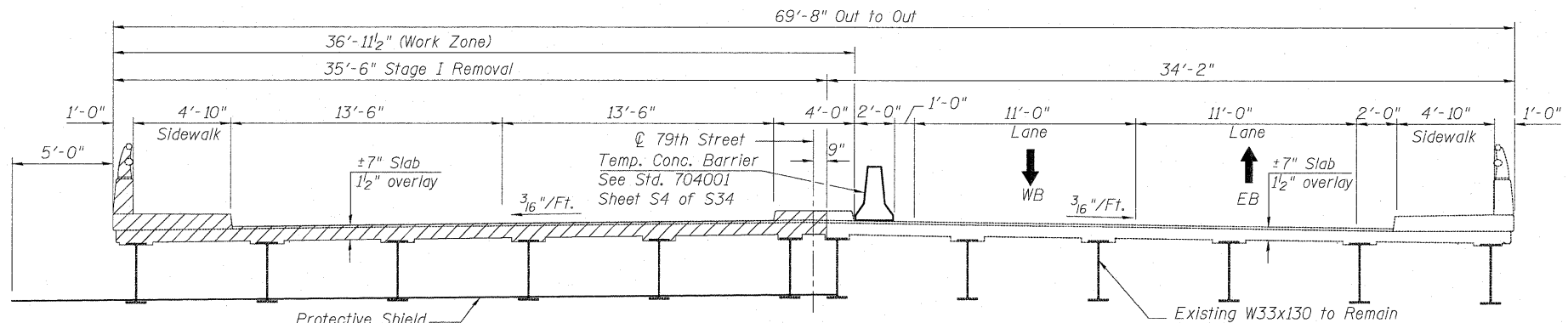


STATE OF ILLINOIS  
DEPARTMENT OF TRANSPORTATION



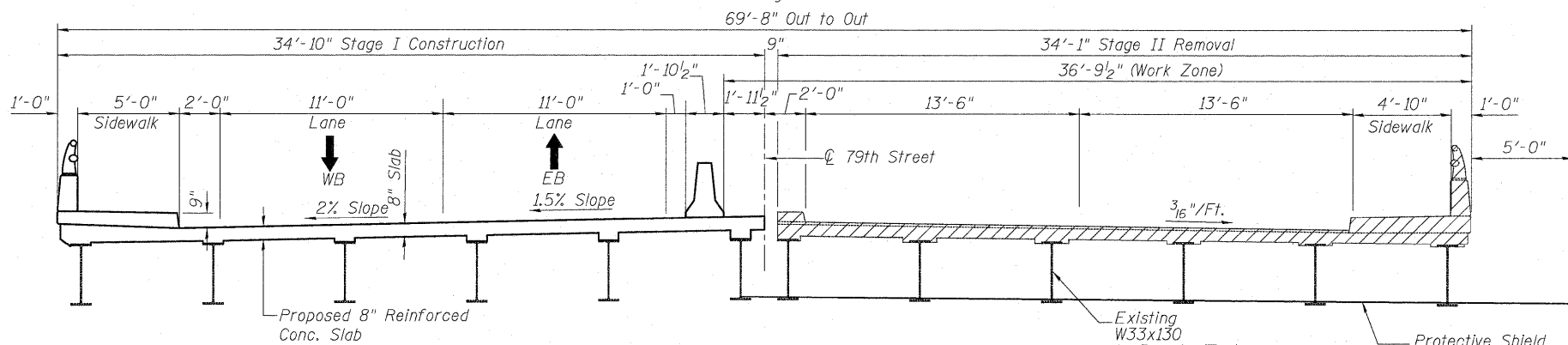
**EXISTING BRIDGE CROSS SECTION**

Looking East



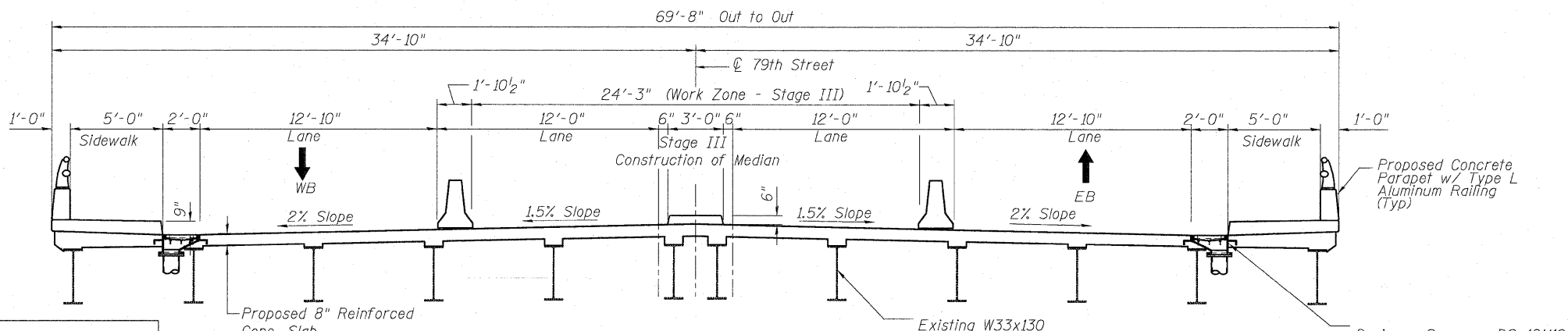
**STAGE 1 REMOVAL & CONSTRUCTION**

Looking East



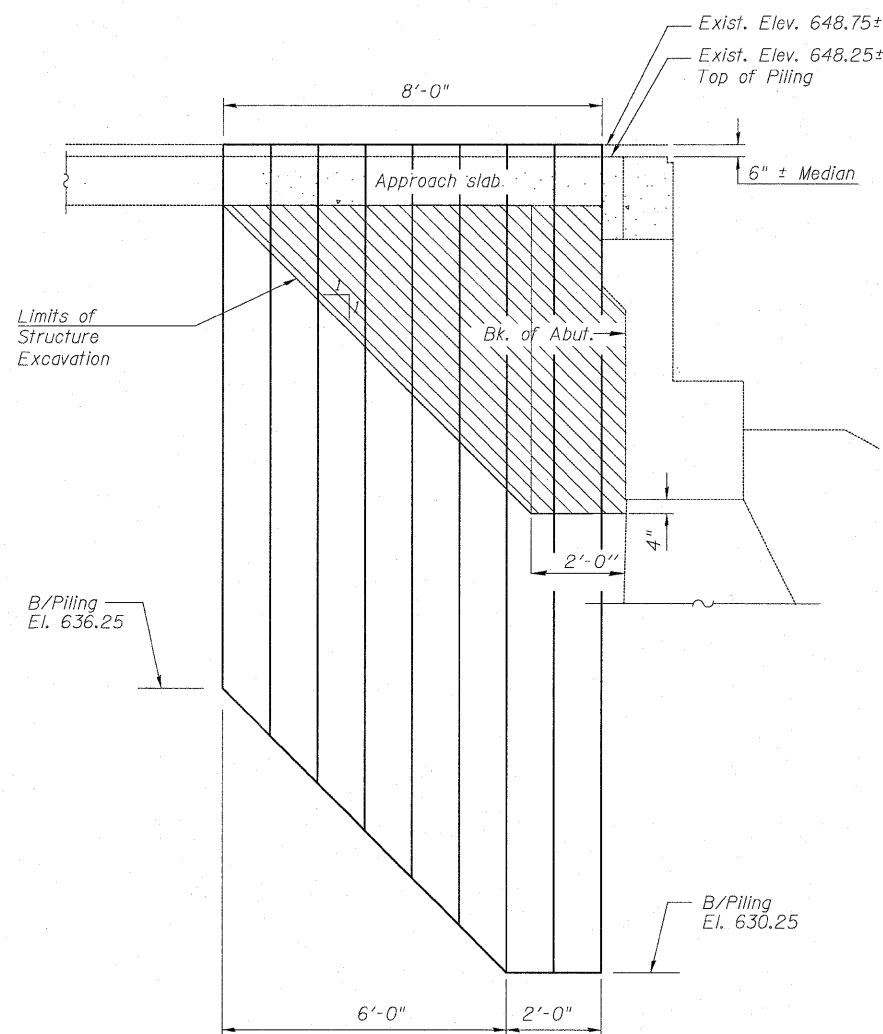
**STAGE 2 REMOVAL & CONSTRUCTION**

Looking East



**STAGE 3**

Looking East



**TEMPORARY SHEET PILING DETAILS**

Minimum Section Modulus = 18.1 in.<sup>3</sup>/ft.  
Minimum Embedment = 18'-0"

Note:  
If the Contractor chooses to alter the temporary cantilevered sheet piling requirements shown on these plans for lesser design requirements, then full design submittals sealed by an Illinois Licensed Structural Engineer will be required and submitted to the Department for review and approval.

Excavation Slope at Rt. angle to Abutment.

**LEGEND**

- Removal of Existing Concrete Deck \*
- Structure Excavation

\* Includes removal of concrete overlay and Bridge Handrail

**STAGE CONSTRUCTION DETAILS**

**STRUCTURE NO. 016-0519**

|          |         |
|----------|---------|
| DESIGNED | JPM     |
| CHECKED  | TG      |
| DRAWN    | MPS     |
| CHECKED  | JPM, TG |



180 S. WACKER DRIVE SUITE 700, CHICAGO, IL 60606 PH: 312-686-8910 FX: 312-686-8415

Note:  
For quantity of Temporary Concrete Barrier, see Roadway Plans.

|                  |             |                           |                    |              |           |
|------------------|-------------|---------------------------|--------------------|--------------|-----------|
| SHEET NO. S3     | F.A.U. RTE. | SECTION                   | COUNTY             | TOTAL SHEETS | SHEET NO. |
|                  | 1548        | 461 (VB&VF) I             | COOK               | 52           | 15        |
| S34 SHEETS       |             |                           | CONTRACT NO. 60H65 |              |           |
| DATE: 06-22-2010 |             | ILLINOIS FED. AID PROJECT |                    |              |           |