

F.A.P. RTE.	SECTION	COUNTY	TOTAL SHEETS	SHEET NO.
VARIOUS	2009-106 I	COOK & WILL	24	1
FED. ROAD DIST. NO. 1	ILLINOIS	CONTRACT NO. 60J05		

STATE OF ILLINOIS
DEPARTMENT OF TRANSPORTATION
DIVISION OF HIGHWAYS

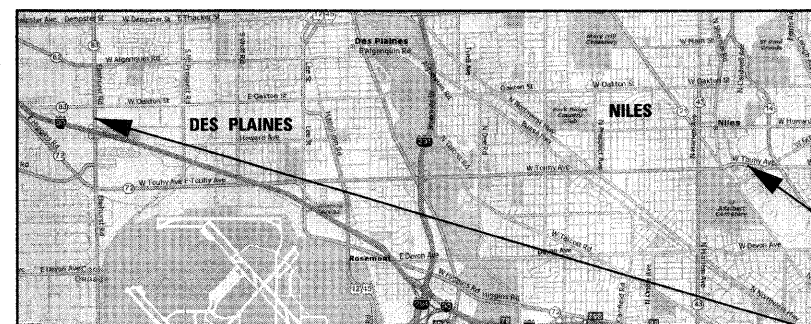
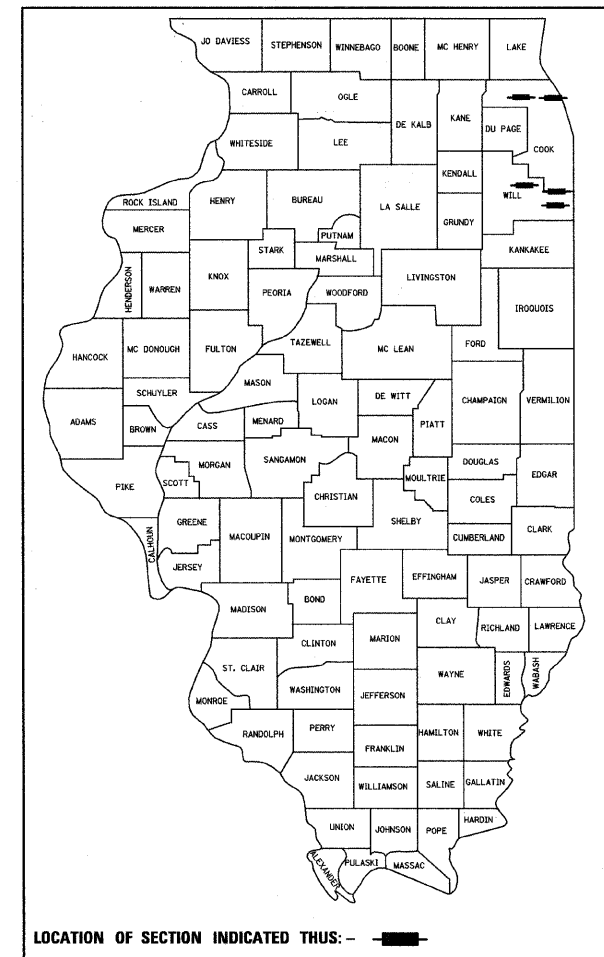
**PROPOSED
HIGHWAY PLANS**

VARIOUS ROUTES
SECTION 2009-106 I
VARIOUS LOCATIONS
RIPRAP, SCOUR COUNTERMEASURES
COOK AND WILL COUNTIES
C-91-158-10

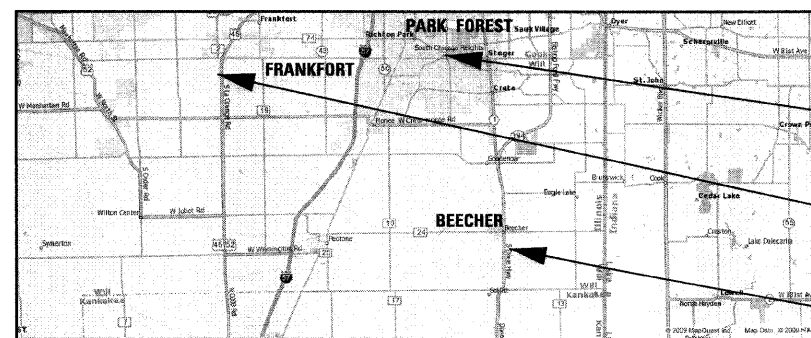
FOR INDEX OF SHEETS, SEE SHEET NO. 2

IMPROVEMENT LOCATED IN THE
VILLAGE OF MOUNT PROSPECT
CITY OF DES PLAINES
VILLAGE OF BEECHER
VILLAGE OF PARK FOREST
VILLAGE OF NILES
VILLAGE OF FRANKFORT

D-91-158-10



LOCATION 4: S.N. 016-0363, TOUHY AVENUE
OVER N. BR. CHICAGO RIVER

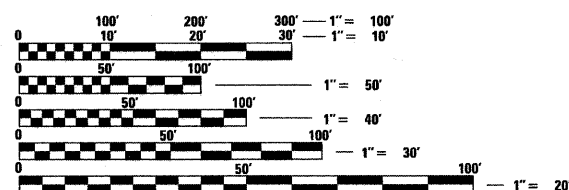


LOCATION 1: S.N. 016-0677, IL 83
OVER HIGGINS CREEK

LOCATION 3: S.N. 016-2415, WESTERN AVENUE
OVER THORN CREEK

LOCATION 5: S.N. 099-0119, US 45
OVER PRAIRIE CREEK

LOCATION 2: S.N. 099-0079, IL 1
OVER TRIM CREEK



FULL SIZE PLANS HAVE BEEN PREPARED USING STANDARD
ENGINEERING SCALES. REDUCED SIZED PLANS WILL NOT
CONFORM TO STANDARD SCALES. IN MAKING MEASUREMENTS
ON REDUCED PLANS, THE ABOVE SCALES MAY BE USED.

J.U.L.I.E.
JOINT UTILITY LOCATING INFORMATION FOR EXCAVATORS
1-800-892-0123
OR 811

DISTRICT ONE - PLAN PREP ENGINEER: KEN ENG (847) 705-4247

CONTRACT NO. 60J05



Birinder S. Sachdeva
BIRINDER S. SACHDEVA, P.E.
EXPIRES: 11-30-2011

5/10/10
DATE



CHRISTIAN-ROGE & ASSOCIATES, INC.
ENGINEERS - PLANNERS - SURVEYORS
211 W. WACKER DRIVE CHICAGO, IL 0 0
TELEPHONE 312-2-2023

PRINTED BY THE AUTHORITY
OF THE STATE OF ILLINOIS