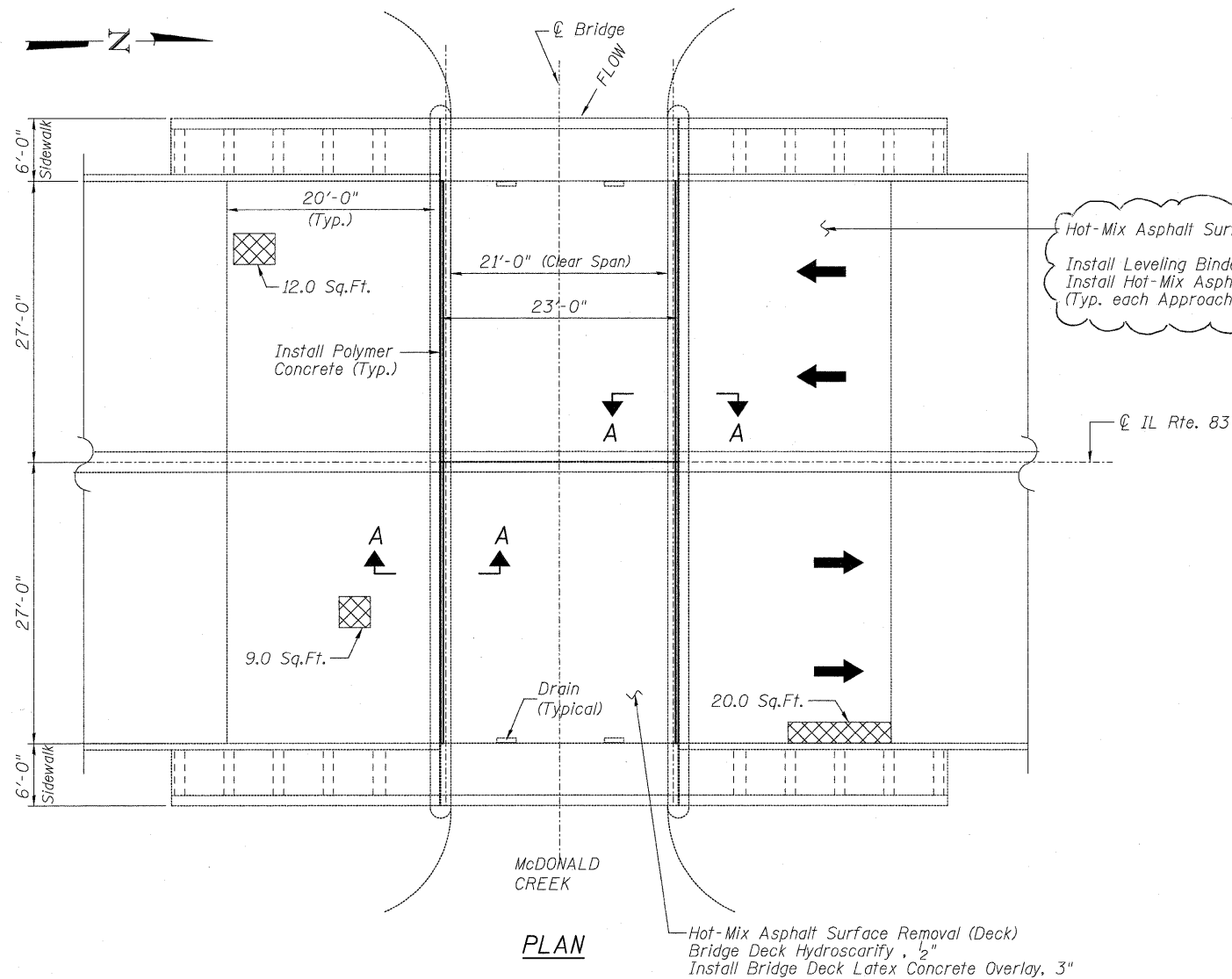


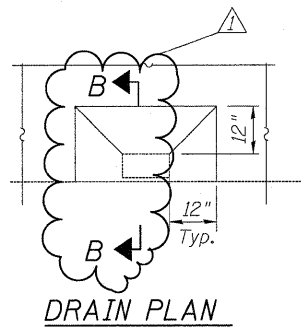
STATE OF ILLINOIS
DEPARTMENT OF TRANSPORTATION



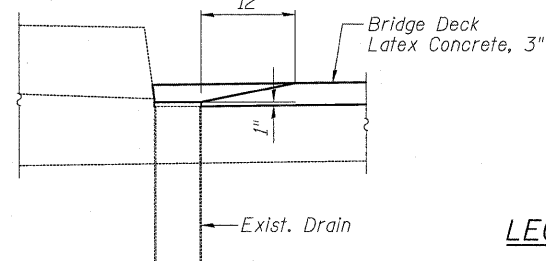
PLAN

Hot-Mix Asphalt Surface Removal, 2 1/2"
Install Leveling Binder, (Machine Method), IL9.5, N-70, 1 1/2"
Install Hot-Mix Asphalt Surface Course, Mix "D", N-70, 1 1/2"
(Typ. each Approach Slab)

Hot-Mix Asphalt Surface Removal (Deck)
Bridge Deck Hydroscarify, 1/2"
Install Bridge Deck Latex Concrete Overlay, 3"

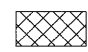
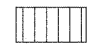
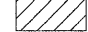


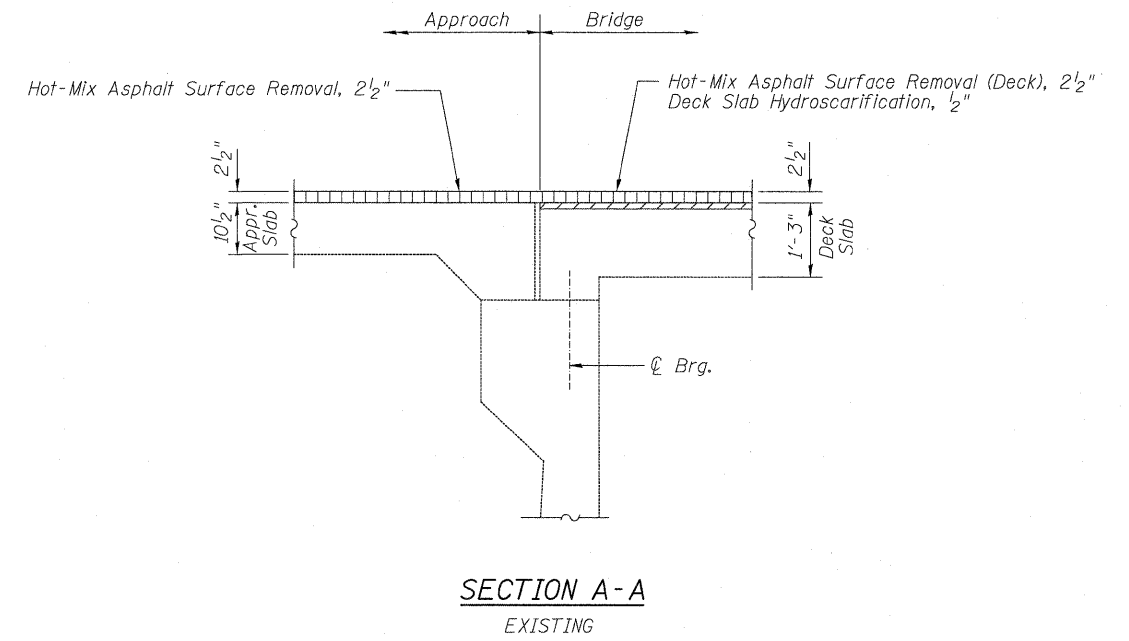
DRAIN PLAN



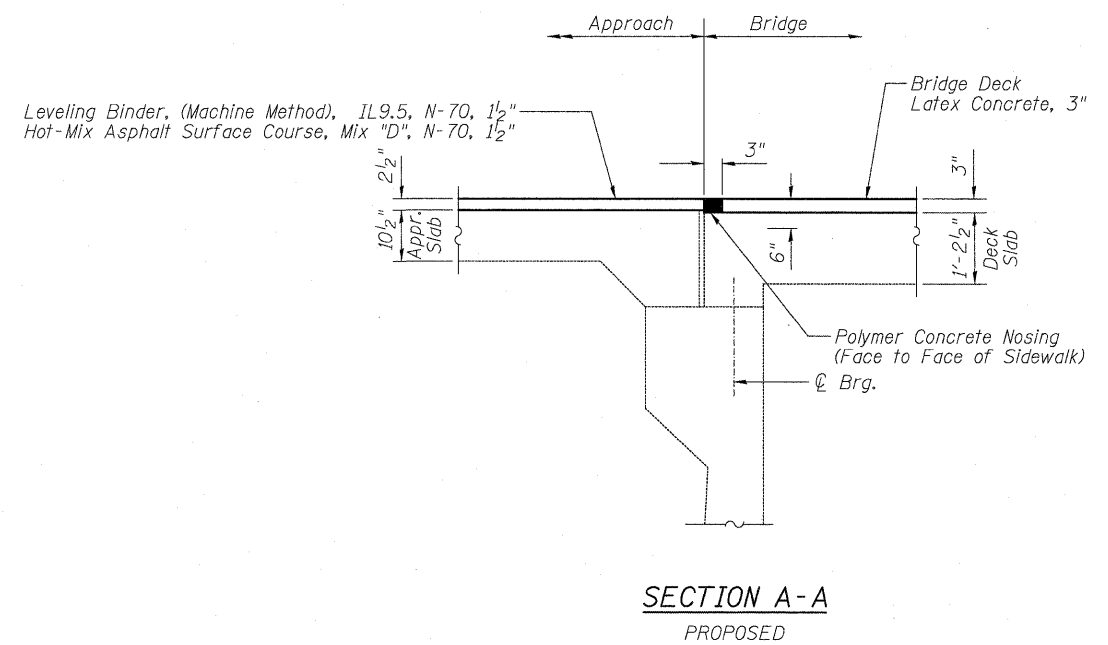
SECTION B-B

LEGEND:

-  Approach Slab Repair (Partial Depth)
-  Hot-Mix Asphalt Surface Removal, 2 1/2"
-  Hydroscarification, 1/2"



SECTION A-A
EXISTING



SECTION A-A
PROPOSED

Note:
Repair of the existing bridge approaches shall include but may not be limited to the areas shown. The actual areas to be repaired will be determined by the Engineer at the time of construction.

BRIDGE APPROACH PATCHING &
TRANSVERSE JOINT RECONSTRUCTION DETAILS
STRUCTURE NO. 016-0558

DESIGNED	JPM
CHECKED	TG
DRAWN	MPS
CHECKED	JPM, TG



100 S. WACKER DRIVE, SUITE 700, CHICAGO, IL 60606, P.312-686-0910 F.312-686-0415

SHEET NO. S4	F.A.P. RTE.	SECTION	COUNTY	TOTAL SHEETS	SHEET NO.
	344	97 B-I-1	COOK	16	11
S5 SHEETS	CONTRACT NO. 60J60			ILLINOIS FED. AID PROJECT	

1 Addendum No. 1 3-26-10

2 Addendum No. 2 7-23-10